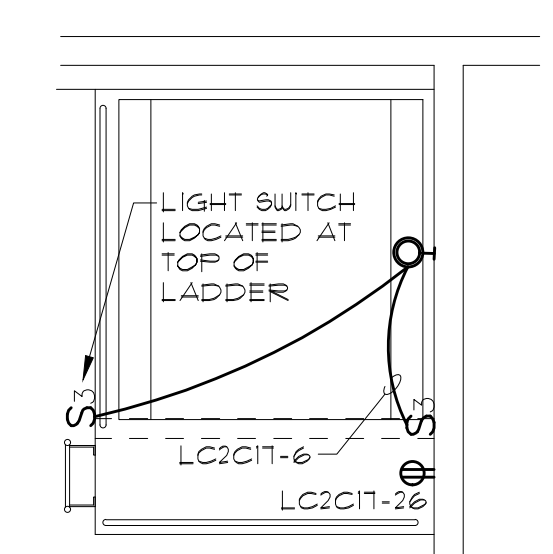


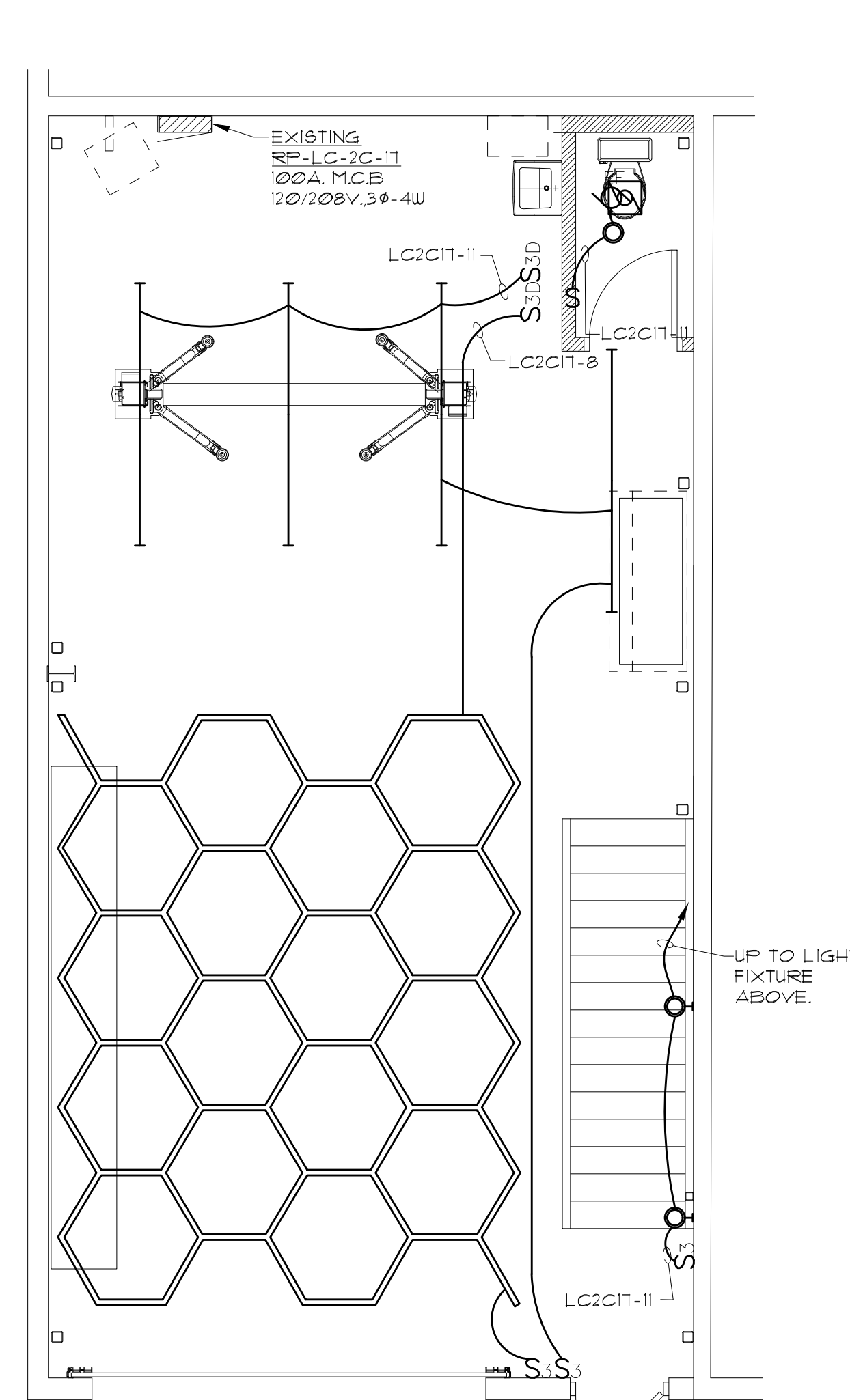
EXISTING RP-LC-2C-17 120/208V. 3 PHASE 4 WIRE 100A. MCB

NO	LOAD DESCRIPTION	LOAD IN KILO-VOLT-AMPS								LOAD IN KILO-VOLT-AMPS								LOAD DESCRIPTION	NO							
		A/C	HTG	KIT	MIS	MTS	RCP	LTG	CB	P	CKT	PH	CKT	P	CB	LTG	RCP			MTS	MIS	KIT	HTG	A/C		
1	EXISTING UNIT HEATER																							2	EXISTING RECEPTACLES	2
3			2.9																					4	EXISTING RECEPTACLES	4
5	EXISTING GARAGE DOOR OPENER				0.8																			6	NEW LIGHTING	6
7	NEW ELECTRIC UNIT HEATER		5.0																					8	NEW LIGHTING	8
9			5.0																					10	NEW POWER LIFT HOIST	10
11	NEW LIGHTING							0.8																12	NEW POWER LIFT HOIST	12
13	POWER CORD REEL																							14	POWER CORD REEL	14
15	REFRIGERATOR				0.5																			16	RECEPTACLE - KITCHEN (1)	16
17	MICROWAVE				0.5																			18	RECEPTACLE - KITCHEN (1)	18
19	RECEPTACLE - KITCHEN (1)																							20	RECEPTACLE - KITCHEN (1)	20
21	RECEPTACLE - KITCHEN (1)																							22	GARBAGE DISPOSAL	22
23	RECEPTACLE - KITCHEN (1)																							24	DISHWASHER	24
25	RECEPTACLE TOILET RM. (1)																							26	RECEPTACLES (2)	26
27	RECEPTACLES (3)																							28	NEW TANKLESS WATER HEATER	28
29	SPACE																				2.5			30	NEW TANKLESS WATER HEATER	30
31	SPACE																							32	NEW POWER LIFT HOIST	32
33	SPACE																							34	NEW POWER LIFT HOIST	34
35	SPACE																							36	SPACE	36
37	SPACE																							38	SPACE	38
39	MAIN																							40	SPACE	40
41																								42	SPACE	42

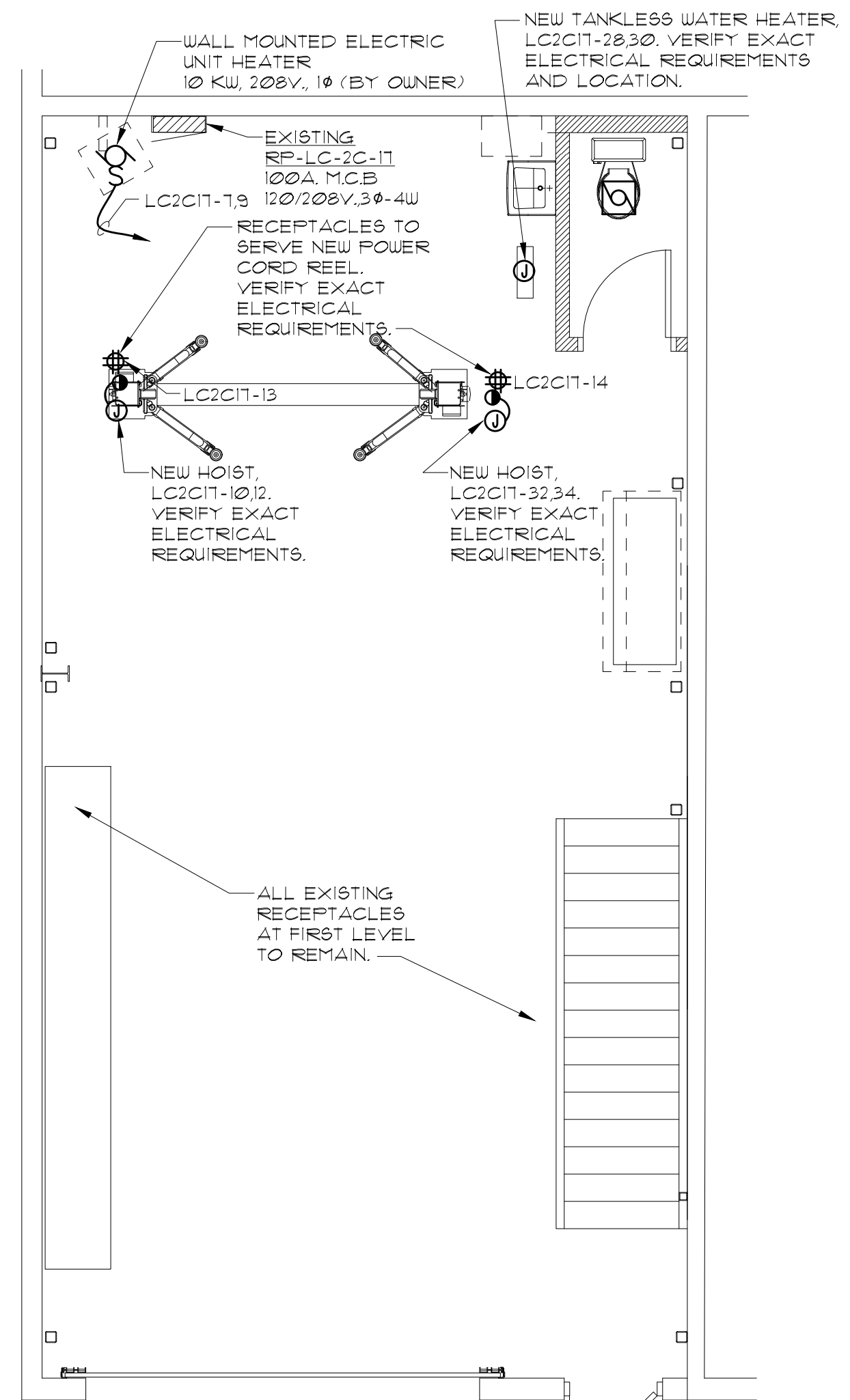
CONNECTED KILO-VOLT-AMPS					DEMAND FACTORS		DEMAND KILO-VOLT-AMPS					ACCESSORIES				
LOAD TYPE	A	B	C	TOTAL			LOAD TYPE	A	B	C	TOTAL	X				
MOTORS (MTS)	3	5	3	10	0.65		MOTORS	2	3	2	7	SURFACE				
MISCELLANEOUS (MS)	0	0	1	1	1.00		MISCELLANEOUS	0	0	1	1	FLUSH				
HEATING (HTG)	8	10	3	21	0.65		HEATING	5	7	2	14	NEHA ENCLOSURE TYPE NUMBER				
AIR CONDITIONING (AC)	0	0	0	0	0.65		AIR CONDITIONING	0	0	0	0	ISOLATED GROUND BUS				
KITCHEN	0	1	1	3	0.65		KITCHEN	0	1	1	2	HANDLE ATTACHMENT				
RECEPTACLES	2	2	0	4	0.65		RECEPTACLES	2	2	0	4	ARC-FAULT PROTECTION				
LIGHTING	1	0	2	2	1.00		LIGHTING	1	0	2	2	EQUIPMENT GROUND BAR				
CONNECTED kVA (phase)	13	18	9	40			DEMAND kVA	9	13	7	29	BUS MATERIAL				
CONNECTED AMPS (phase)	62	88	44	112			DEMAND AMPS (phase)	45	60	33	80	ALARM SWITCHES				
CONNECTED AMPS (L-N)	108	153	76				DEMAND AMPS (L-N)	77	105	57		SHUNT TRIP CIRCUIT BREAKER				
												GROUND FAULT INTERRUPTER				



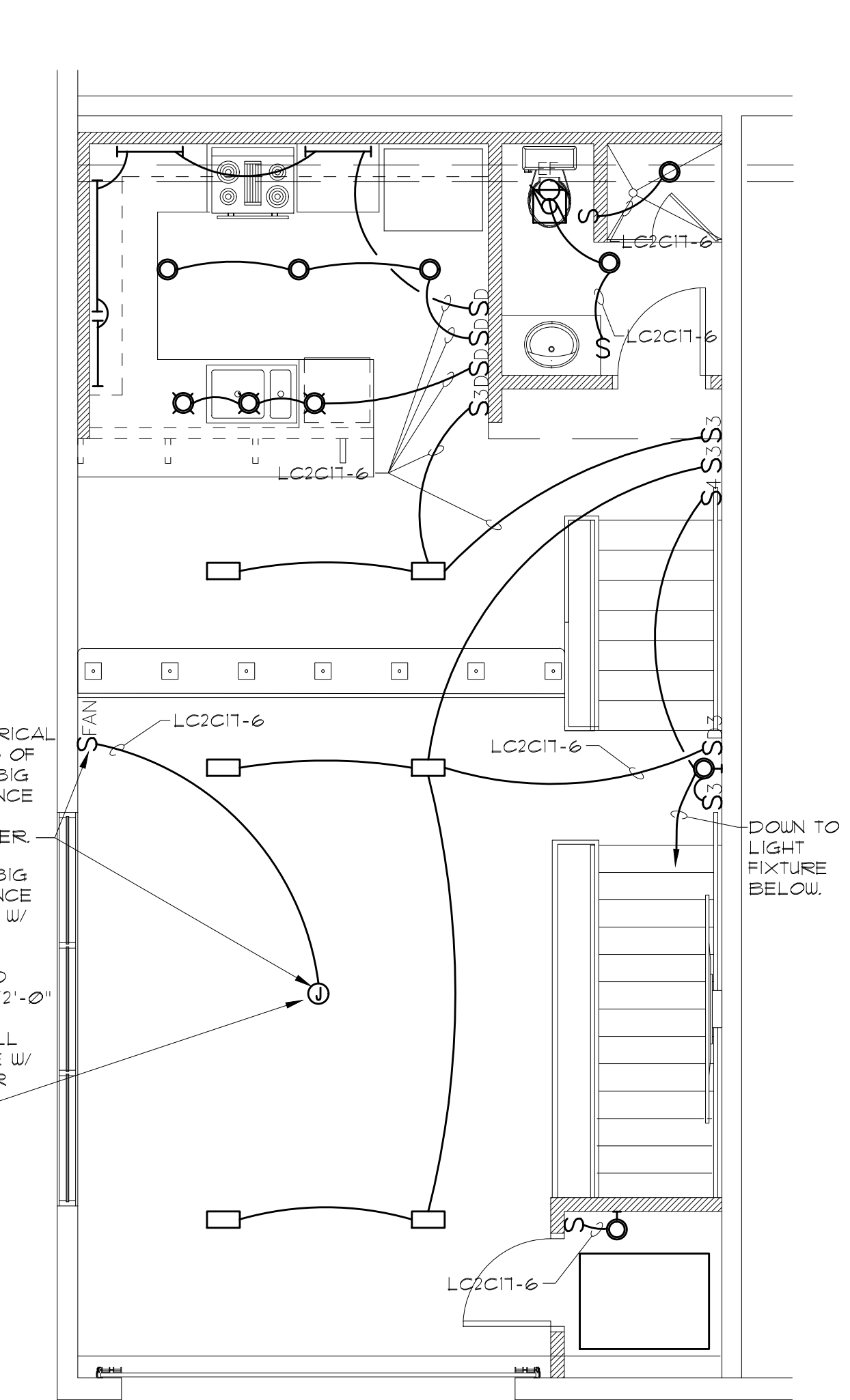
LOFT LEVEL ELECTRICAL FLOOR PLAN
SCALE: 1/4"=1'-0"



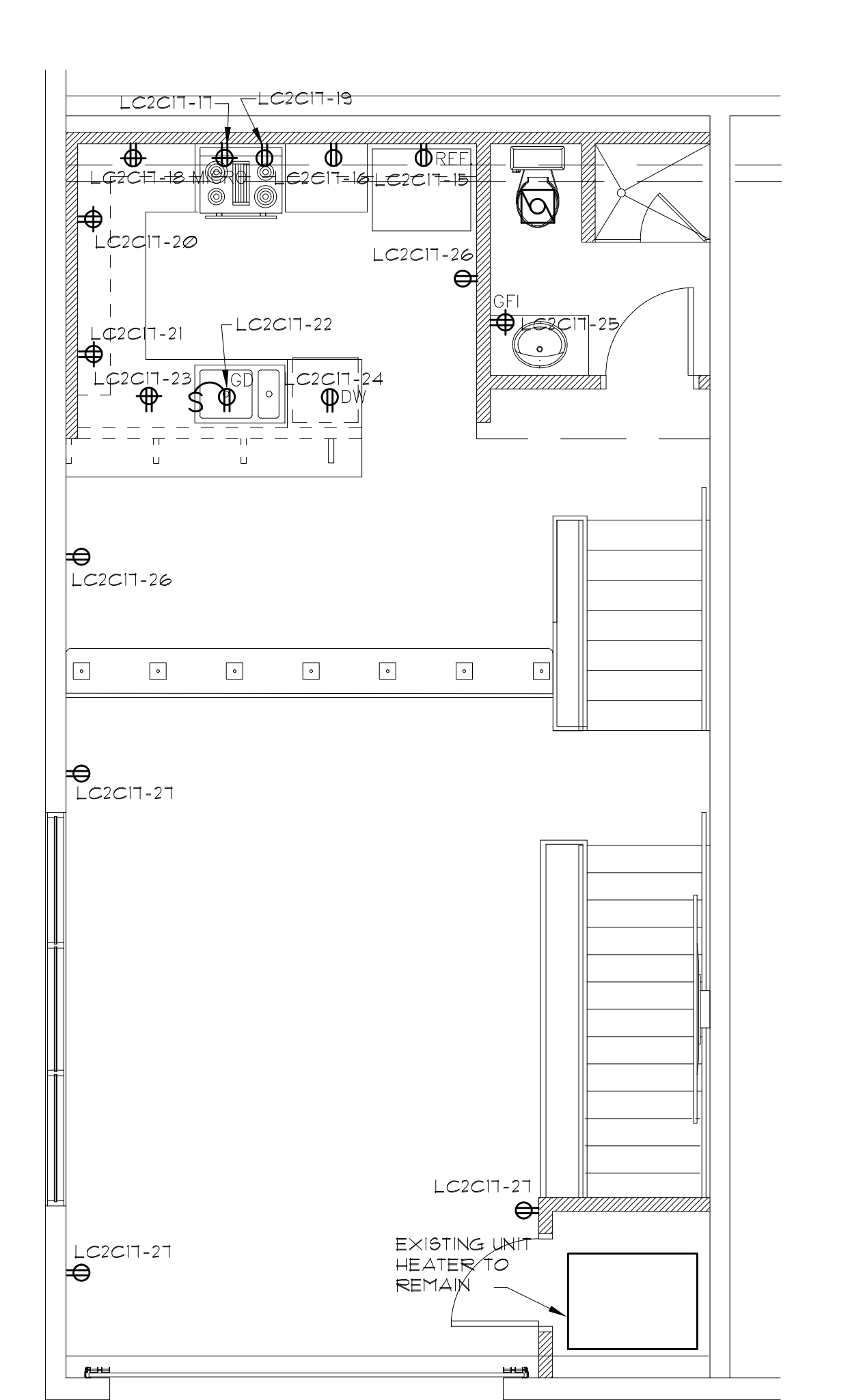
FIRST LEVEL ELECTRICAL FLOOR PLAN - LIGHTING
SCALE: 1/4"=1'-0"



FIRST LEVEL ELECTRICAL FLOOR PLAN - POWER
SCALE: 1/4"=1'-0"



MEZZANINE LEVEL ELECTRICAL FLOOR PLAN - LIGHTING
SCALE: 1/4"=1'-0"



MEZZANINE ELECTRICAL FLOOR PLAN - POWER
SCALE: 1/4"=1'-0"

- GENERAL ELECTRICAL NOTES:**
- ALL LIGHT FIXTURES PROVIDED BY OWNER INSTALLED BY ELECTRICAL CONTRACTOR.
 - VERIFY LOCATION, TYPE AND QUANTITY OF RECEPTACLES WITH OWNER.
 - VERIFY LIGHT SWITCH TYPES AND LOCATIONS WITH OWNER.
 - SD AND S3D SYMBOLS INDICATE DIMMER SWITCH AND THREE-WAY DIMMER SWITCH.

COPYRIGHT © 2011
THIS DOCUMENT AND SUBJECT MATTER CONTAINED THEREIN IS PROPRIETARY AND IS NOT TO BE REPRODUCED OR TRANSMITTED IN ANY FORM OR BY ANY MEANS WITHOUT THE WRITTEN PERMISSION OF CHESTER STEMPIEN ASSOC.

PROJECT
**M-1 CONCOURSE,
BUILDING 4B UNIT 255**
255 APEX DR
PONTIAC, MI

SUBJECT
**ELECTRICAL FLOOR
PLANS**

ARCHITECTS
CHESTER STEMPIEN ASSOCIATES • AIA
29995 GREENFIELD ROAD SOUTHFIELD, MICHIGAN 48076
(248) 557-2145 FAX: (248) 569-2856

ISSUED:
BIDD & PERMITS
02/04/2022

DESIGNED T.J.F.
CHECKED T.J.F.
APPROVED C.R.B.
DATE
DESIGNER

DO NOT SCALE
PRINTS - USE
FIGURED
DIMENSIONS ONLY

JOB NO.
T2021063

SHEET
E.1

SUITE 255
M1 CONCOURSE

