

WALK - IN SPECIFICATIONS



Cooler/Freezer
OVERALL SIZE: 20'-2 1/2" X 9'-6" X 8'-6 1/4" (INDOOR)

PANELS
 FOAMED IN PLACE URETHANE FOAM 4"

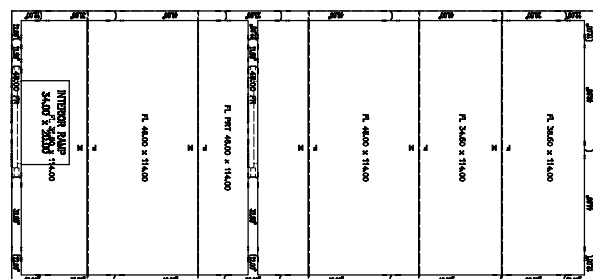
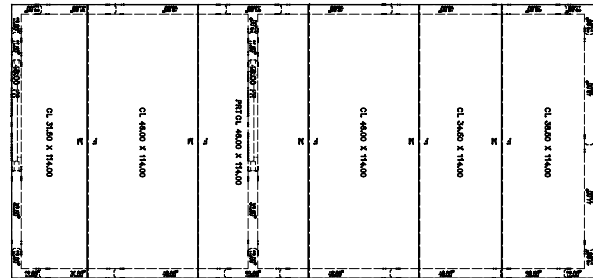
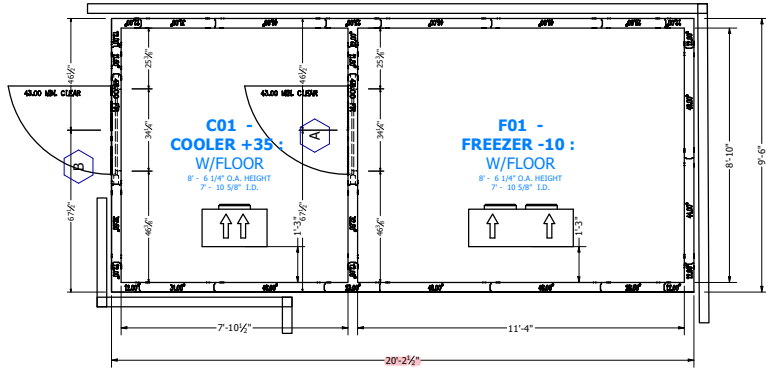
EXTERIOR FINISH
 WALL: ALUMINUM - NATURAL EMBOSSED - .040
 TOP: GALVALUME - EMBOSSED 26 GA
 FLOOR: GALVALUME - EMBOSSED 26 GA

INTERIOR FINISH
 WALL: ALUMINUM - NATURAL EMBOSSED - .040
 TOP: ALUMINUM - NATURAL EMBOSSED - .040

FLOOR TYPE
 F01 FREEZER -10 :
 STANDARD 1200A ERA
 STAINLESS STEEL - T304 2B 16GA.
 C01 COOLER +35 :
 STANDARD 1200A ERA
 STAINLESS STEEL - T304 2B 16GA.

WALK-IN ACCESSORIES
 (3) LEHT - KASON 18100UV LED 48IN 120/230V 50/60HZ (DIODE STRIPS)
 (2) TRIM ANGLED 3" X 3" X 6FT ALUMINUM EMBOSSED .040

REFRIGERATION
 F01 FREEZER -10 :
 KRC199L0P-2E, R404A, VOLTS: 208-230-60-3, BTU: 7498
 KEL58-090-2EC-PR-4 VOLTS: 208-230-60-3, BTU: 8817
 TEMP: WALK-IN -10, AMBIENT TEMP: 90
 C01 COOLER +35 :
 KRC199L0P-2E, R404A, VOLTS: 208-230-60-3, BTU: 5230
 KAM16-052-1EC-PR-4 VOLTS: 115-60-1, BTU: 5682
 TEMP: WALK-IN 35, AMBIENT TEMP: 90



ATTENTION

- SUBMITTAL DRAWING NOT INTENDED FOR INSTALLATION.
- AS-BUILT DRAWING FOR INSTALLATION WILL BE AVAILABLE AFTER ORDER IS PLACED. HARD COPY OF AS-BUILT DRAWING WILL BE IN HARDWARE BOX WITH WALK-IN EQUIPMENT TO JOB SITE. ALL AS-BUILT DRAWINGS SHOW PART NUMBERS AND ID LABELS ON PLAN VIEWS.
- ALL WALK-INS ARE DESIGNED FOR INDOOR APPLICATION UNLESS NOTED OTHERWISE.
- PREPARE FOUNDATION AND SEALING OF ARE THE RESPONSIBILITY OF OTHERS.
- ALLOW 2" MINIMUM CLEARANCE WITH AIRFLOW OF 5 CFM PER 100 SQ. FT. AROUND ENTIRE PANEL SURFACES. INDOOR WALK-INS REQUIRE A 20' AMBIENT AND 30' HEALTHY AIRSETTLING OR LESS AROUND THE EXTERIOR OF THE WALK-IN.
- GENERAL CONTRACTOR TO REFER TO DESIGN AND SPECIFICATION MANUAL FOR FLOOR DETAIL INFORMATION.
- CONCRETE FLOOR APPLICATIONS: METAL PANEL FINISHING MAY BE SUSCEPTIBLE TO STAINING DUE TO EXCESSIVE MOISTURE CREATED BY THE HYDRATION OF CONCRETE TYPE MATERIALS. IT IS ABSOLUTELY NECESSARY THAT EACH ROOM BE PROPERLY VENTILATED. SPECIAL PRECAUTIONS MUST ALSO BE TAKEN WHEN USING WEARABLE ACID DUE TO EFFECTS HYDROCHLORIC FUMES HAVE ON METAL MATERIALS.
- PANEL LAYOUT MAY CHANGE BASED ON OPTIMAL MANUFACTURING STANDARDS.
- WALK-IN TOP IS NOT DESIGNED FOR FOOT TRAFFIC OR STAIRCASES UNLESS NOTED OTHERWISE.
- IF CONDENSING UNIT IS LOCATED IN THE INTERIOR OF BUILDING A MINIMUM OF 24" OF CLEARANCE IS REQUIRED AROUND TOP AND SIDES OF FLOOR CURBS AND NOT FOR GENERAL REFERENCE ONLY. THESE DRAWINGS SHOULD NOT BE USED OR INCORPORATED IN THE DESIGN OR PREPARATION OF THE INSULATED FLOOR, SUB-SLAB OR CURBS, WITHOUT HAVING THE DESIGN REVIEWED BY A QUALIFIED ENGINEER. ALL FOOTINGS, FOUNDATION WALLS AND CONCRETE WEAR SLABS ARE THE RESPONSIBILITY OF THE BUILDING ENGINEER OR ARCHITECT.
- THE FOAM PLASTIC USED IN THIS PRODUCT COMPLIES TO THE IBC SECTION 2603 AS FOLLOWS: FLAME SPREAD RATING: 20; SMOKE DEVELOPED RATING: 450; FASH IGNITION TEMPERATURE RATING: 1515°F; SPONTANEOUS IGNITION TEMPERATURE RATING: 590°F.
- 0 VALVES MEET DOE REQUIREMENTS AND ARE ASTM C518 TESTED. COOLER 0 VALVES ARE 2.0 FOR 4" THICK, 0.30 FOR 5" THICK, AND 0.44 FOR 6" THICK PANELS. FREEZER 0 VALVES ARE 0.32 FOR 4" THICK, 0.48 FOR 5" THICK, 0.68 FOR 6" THICK PANELS, AND 0.29 FOR 4" FLOORS.
- FLOORS NOT DESIGNED FOR WET MOPPING, PALLET JACKS, OR FORKLET TRAFFIC.

FOR APPROVAL
 YOU MUST REVIEW ALL NOTES, DETAILS, DIMENSIONS, FINISHES, DOORS SIZES, LOCATIONS AND SWINGS

- APPROVAL:** NO CHANGE REQUIRED, MANUFACTURE AS DRAWN.
 - APPROVED AS NOTED:** MAKE REQUIRED CHANGES AND MANUFACTURE AS DRAWN.
 - NOT APPROVED:** DESIGN CHANGES REQUIRE DRAWING REVISION AND RESUBMISSION.
- DATE: _____ BY: _____

SMOOTH FINISH DISCLAIMER

Panels with non-textured and/or no-profile panel finishes (smooth finishes) on the exterior and interior faces may exhibit "oil canning" and flatness imperfections on the surface. Our standard panels have a stucco embossed texture on both faces that helps to reduce oil canning and any other irregularities in the exposed surface. Please be aware of this potential situation in your specification process. Such "oil canning" and flatness issues are typical and are not covered under standard warranties.

NOTICE:

- Kolpak and Harford walk-ins are compliant with UL standards.
- Door panels are UL471, UL file listing E46140.
 - Standard Evaporator coils are UL412.
 - Condensing Units are UL1995.

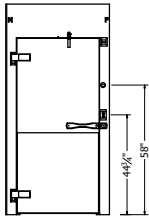
DRAWING #: A200509R1
 UNIT #: 001
 ORDER #:



BK- COLUMBUS, OH, (INDIANOLA)
 COLUMBUS, OH 43085 USA

H & K INTERNATIONAL

DATE	REVISION	BY	CHKD

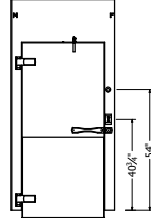


DR 34.00" x 78.00"
FR 46.00" x 94.25"
DW-1

FRAME:
RECESSED 0" WITH 0" LEVELING SAND AND 0" TILE AND GROUT
EXT: ALUMINUM - NATURAL EMBOSSED - .040
INT: ALUMINUM - NATURAL EMBOSSED - .040

PLUG:
EXT: ALUMINUM - NATURAL EMBOSSED - .040
EXT: KICKPLATE, ALUM .063 DIAMOND TREAD 36" HIGH
INT: ALUMINUM - NATURAL EMBOSSED - .040
INT: KICKPLATE, ALUM .063 DIAMOND TREAD 36" HIGH

HARDWARE AND ACCESSORIES:
(1) 115/60/1 ELECTRICAL
(1) DOOR CLOSER - KASON 1004 BRUSHED CHROME (STD)
(1) HANDLE - KASON 28 WITH LOCKING ASSEMBLY (STD)
(1) HEATER WIRE, 5 WATT / FT
(2) HINGE - KASON 1346 BRUSHED CHROME ADJUSTABLE / SPRING ASSISTED (STD)
(3) LIGHT FIXTURE - KASON 1803 LED W/BULB, GLOBE AND NIGHTLIGHT 120V (STD)
(1) SWITCH - PILOT LIGHT INCLUDED 120V UL (STD)
(1) THERMOMETER - 2 INCH DIAL W/P LEAD (STD)
(3) THRESHOLD, FRP
(1) VENT - PRESSURE RELIEF, HEATED KASON 1825 (STD)



DR 34.00" x 78.00"
FR 46.00" x 94.25"
DW-2

FRAME:
RECESSED 0" WITH 0" LEVELING SAND AND 0" TILE AND GROUT
EXT: ALUMINUM - NATURAL EMBOSSED - .040
INT: ALUMINUM - NATURAL EMBOSSED - .040

PLUG:
EXT: ALUMINUM - NATURAL EMBOSSED - .040
EXT: KICKPLATE, ALUM .063 DIAMOND TREAD 36" HIGH
INT: ALUMINUM - NATURAL EMBOSSED - .040
INT: KICKPLATE, ALUM .063 DIAMOND TREAD 36" HIGH

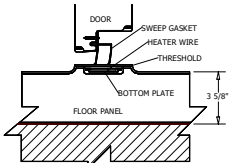
HARDWARE AND ACCESSORIES:
(1) 115/60/1 ELECTRICAL
(1) DOOR CLOSER - KASON 1004 BRUSHED CHROME (STD)
(1) HANDLE - KASON 28 WITH LOCKING ASSEMBLY (STD)
(1) HEATER WIRE, 1 WATT / FT
(2) HINGE - KASON 1346 BRUSHED CHROME ADJUSTABLE / SPRING ASSISTED (STD)
(3) LIGHT FIXTURE - KASON 1803 LED W/BULB, GLOBE AND NIGHTLIGHT 120V (STD)
(1) RAMP INTERIOR 34X20
(1) SWITCH - PILOT LIGHT INCLUDED 120V UL (STD)
(1) THERMOMETER - 2 INCH DIAL W/P LEAD (STD)
(1) THRESHOLD, FRP
(3) THRESHOLD, STAINLESS STEEL 14 GA

A

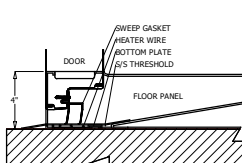
B

DOOR ELECTRICAL INFORMATION				
DESCRIPTION	QTY	VOLT	AMP	AMP LOAD
HEATED AIR VENT	1	115	0.04	0.04
HEATER WIRE	1	115	0.8	0.8
LED LIGHT	1	115	0.1	0.1
115 VOLT, SINGLE PHASE, 60 HZ, TOTAL DOOR AMPS: 0.94				

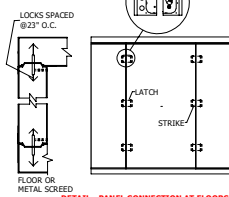
DOOR ELECTRICAL INFORMATION				
DESCRIPTION	QTY	VOLT	AMP	AMP LOAD
HEATER WIRE	1	115	0.2	0.2
LED LIGHT	1	115	0.1	0.1
115 VOLT, SINGLE PHASE, 60 HZ, TOTAL DOOR AMPS: 0.3				



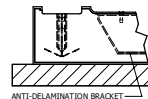
1 DETAIL - 4IN PRT FLOOR-HTR WIRE
Scale: NTS



2 DETAIL - 4IN FLOOR-RAMP
Scale: NTS

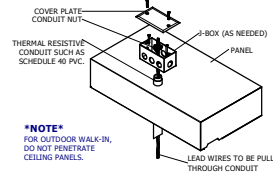


3 DETAIL - PANEL CONNECTION AT FLOORS OR METAL SCREDS
Scale: NTS



4 DETAIL - FOOT-LIGHT ROLLING CART FLOOR CONSTRUCTION
Scale: NTS

AT EVERY ENTRANCE CONDUIT, FORCE SEALANT AROUND THE EXTERIOR OF THE ELECTRICAL CONDUIT AND INSIDE THE CONDUIT AROUND THE WIRES. FAILURE TO ELIMINATE AIRFLOW IN THE CONDUIT WILL ALLOW MOISTURE TO DAMAGE ELECTRICAL COMPONENTS ESPECIALLY LIGHTS WHICH WILL NOT BE COVERED UNDER WARRANTY.

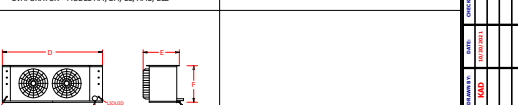
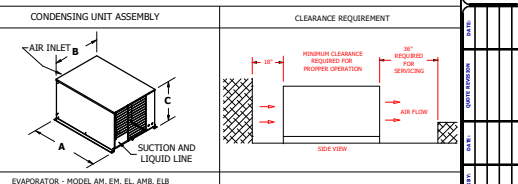


NOTE FOR OUTDOOR WALK-IN, DO NOT PENETRATE CEILING PANELS.

5 DETAIL - ELECTRICAL CONDUIT PENETRATION
Scale: NTS

COMPARTMENT		CONDENSING UNIT																							
DESCRIPTION	TEMP F	WI	QTY	MODEL#	REFRIGERANT	COMPRESSOR TYPE	DIMENSIONS				COMPRESSOR				CONDENSER FAN MTR		TOTAL AMPS	MX AMP DISC	CONNECTIONS O.D.		RCV CAP @ 90% FULL (lbs)				
							L (A)	W (B)	H (C)	LBS	HP	RLA	LRA	V	HZ	Φ			FLA	V		Φ	SUCT	LIQ	
F01 FREEZER -10	-10	-10	1	KPC199LDP-3E	R404A	HERMETIC	33	25.5	19.25	186	2	10.2	72.2	208-230	60	3	1.1	9.8	208-230	1	11.6	20	7/8	3/8	10.2
C01 COOLER +35	+35	+35	1	KPC49MOP-2E	R404A	HERMETIC	33	25.5	19.25	152	1/2	5.1	26.5	208-230	60	1	0.5	208-230	1	5.7	15	5/8	3/8	5.8	

COMPARTMENT		UNIT COOLER															
DESCRIPTION	TEMP F	WI	QTY	MODEL # (DEFROST: A-AIR E-ELECTRIC)	REFRIGERANT	DIMENSIONS				FAN		HEATER		CONNECTIONS O.D.			
						L (D)	W (E)	H (F)	LBS	TOTAL AMPS	V	TOTAL AMPS	V	Φ	SUCT	LIQ	DRAIN
F01 FREEZER -10	-10	-10	1	KEL26-090-2EC-PR-4	R404A	43.625	15.5	16.75	58	1	208-230	9.8	208-230	1	7/8	3/8	3/4
C01 COOLER +35	+35	+35	1	KAM16-052-1EC-PR-4	R404A	27.125	15.5	16.75	44	0.8	115	0	N/A	0	5/8	3/8	3/4



DRAWING #: AD2024R01
UNIT #: 001
ORDER #:

KOLPAK
A Weather Brand

BK - COLUMBUS, OH, (INDIANOLA)
COLUMBUS, OH 43085 USA

H & K INTERNATIONAL

DATE	
BY	
CHECKED BY	
DATE	
BY	
CHECKED BY	
DATE	
BY	
CHECKED BY	
DATE	
BY	
CHECKED BY	
DATE	
BY	
CHECKED BY	
DATE	
BY	
CHECKED BY	
DATE	
BY	
CHECKED BY	

DESCRIPTION	QTY	VOLT	AMP	AMPLOAD
HEATEDAIRVENT	1	115	0.04	0.04
HEATERWIRE	1	115	0.8	0.8
LEDLIGHT	1	115	0.1	0.1
115 VOLT, SINGLE PHASE, 60 Hz, TOTAL DOORAMPS:				0.94

DESCRIPTION	QTY	VOLT	AMP	AMPLoad
HEATERWIRE	1	115	0.2	0.2
LEDLIGHT	1	115	0.1	0.1
115 VOLT, SINGLE PHASE, 60 Hz, TOTAL DOORAMPS:				0.3