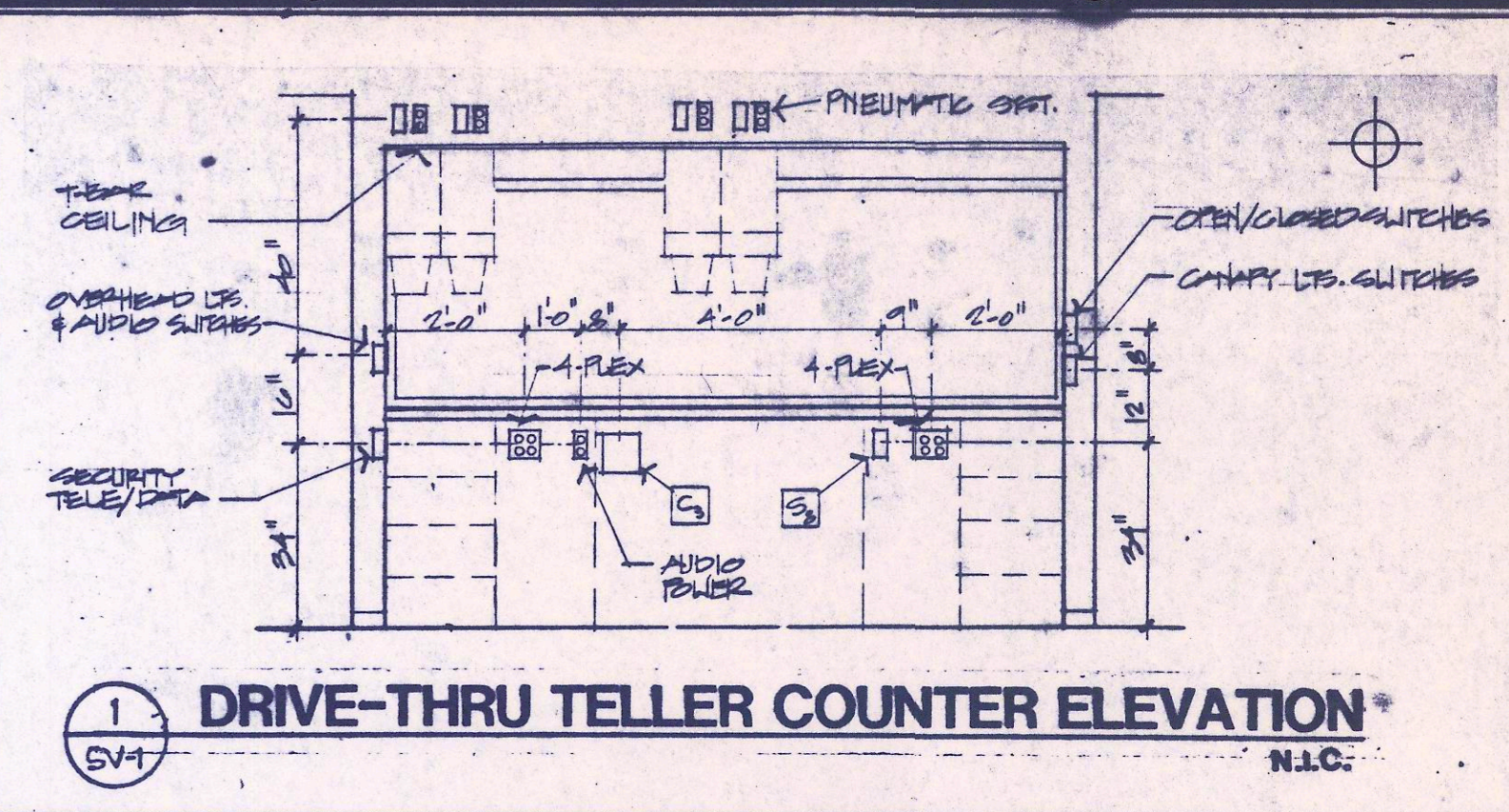
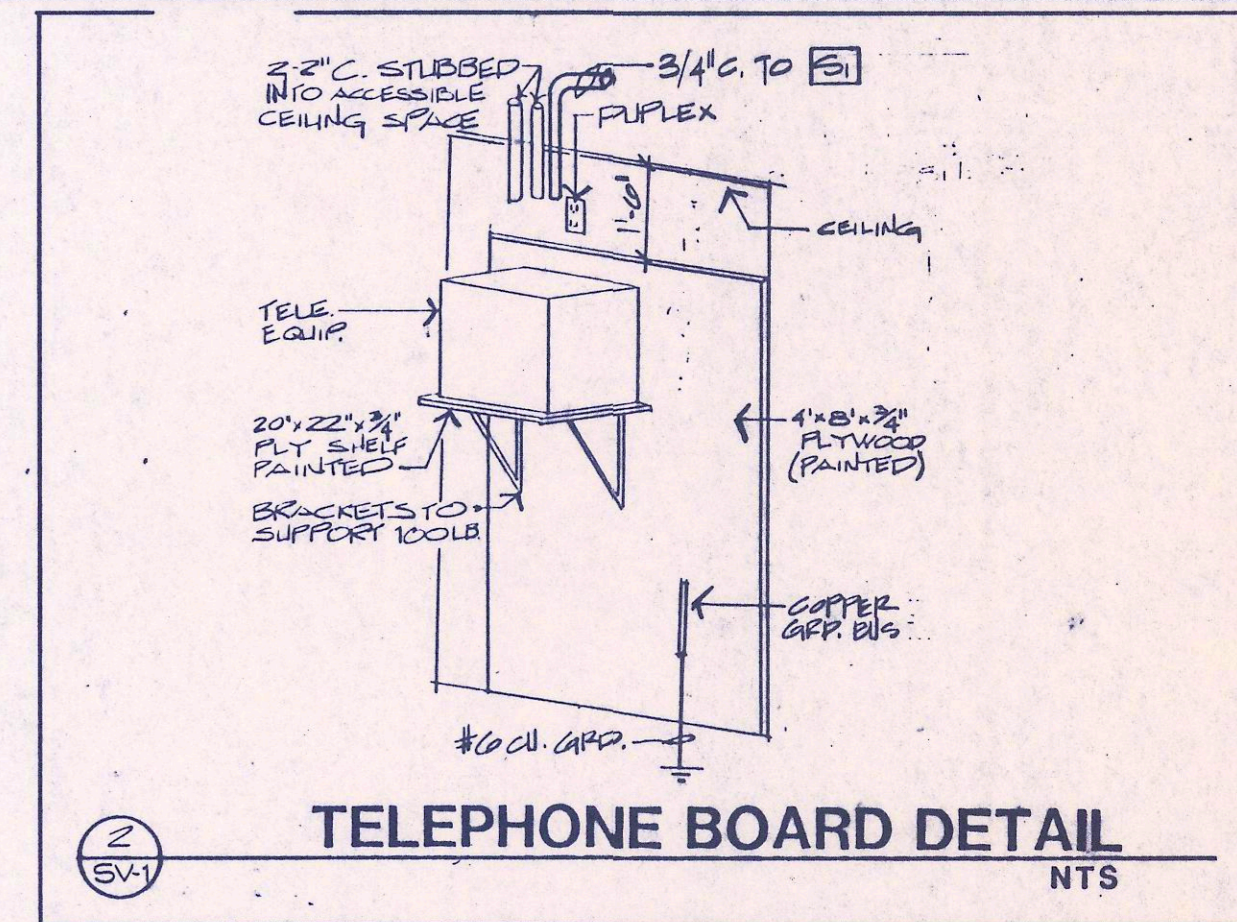


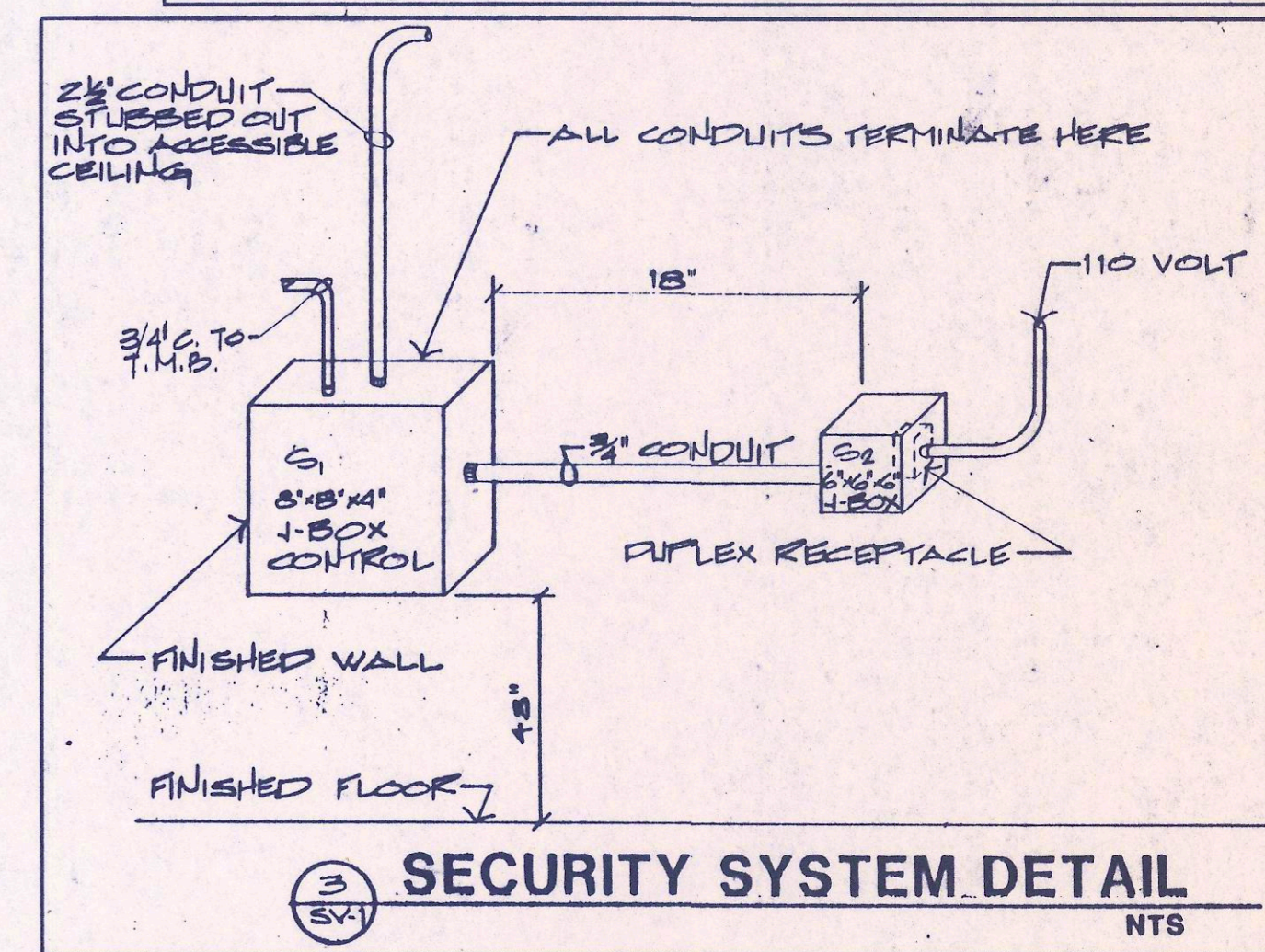
**SECURITY SYSTEM PLAN**



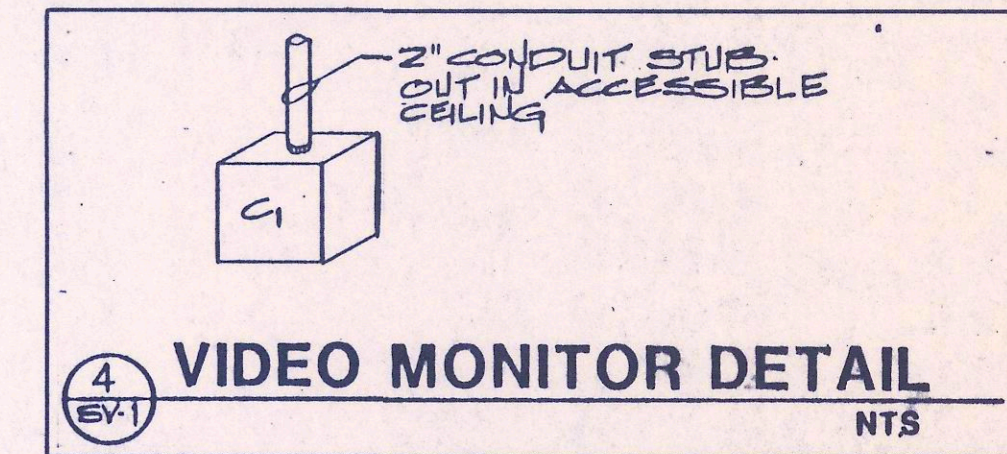
**DRIVE-THRU TELLER COUNTER ELEVATION**



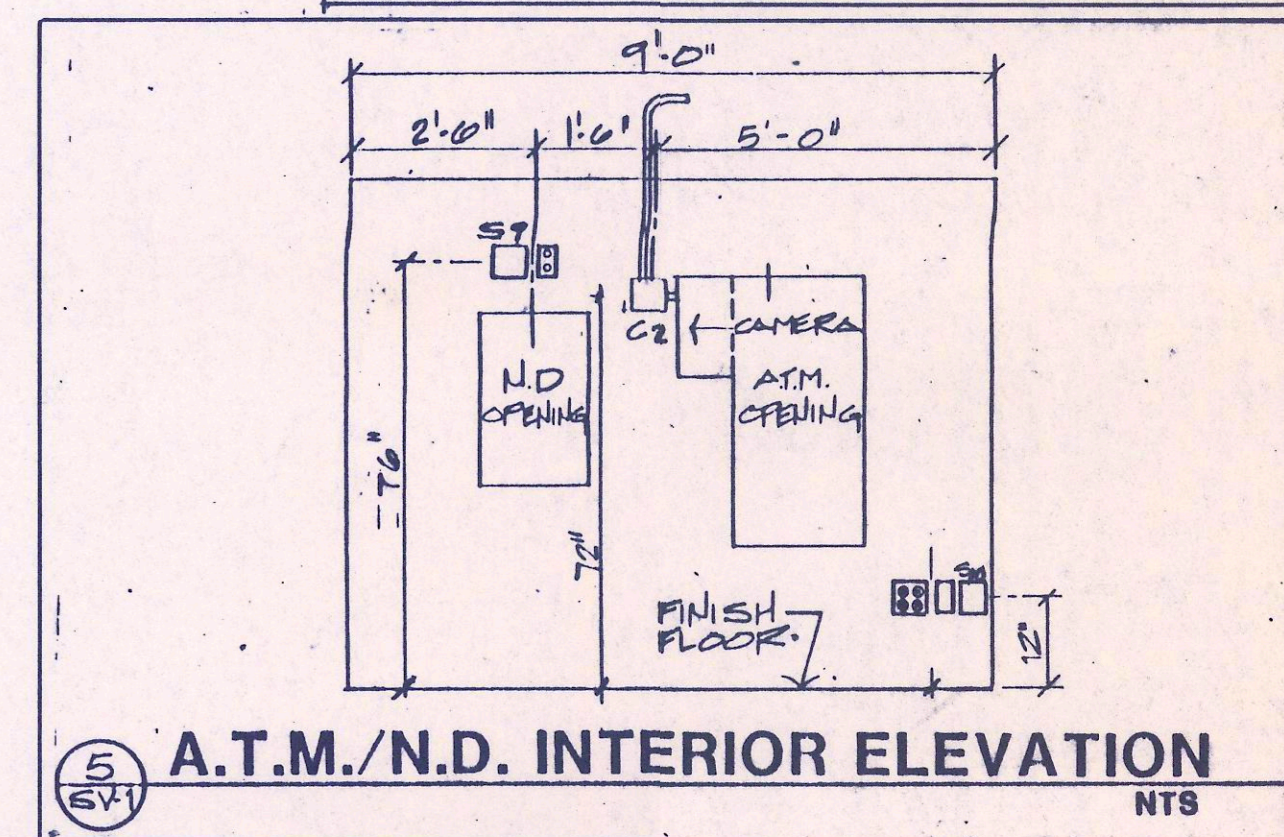
**TELEPHONE BOARD DETAIL**



**SECURITY SYSTEM DETAIL**



**VIDEO MONITOR DETAIL**



**A.T.M./N.D. INTERIOR ELEVATION**

- SECURITY SYSTEM SYMBOLS**
- S1 SECURITY CONTROL J-BOX - 8" X 8" X 4" DEEP FLUSH MOUNTED J-BOX. A 16-1/2" X 16" X 4" CONTROL CABINET WILL BE INSTALLED OVER THE J-BOX. (SEE DETAIL #3) PROVIDE 3/4" C. FROM S1 TO T.M.B.
  - S2 SECURITY POWER J-BOX - 6" X 6" X 4" DEEP FLUSH MOUNTED J-BOX WITH BLANK COVERPLATE. RECEPTACLE POWER (120 VOLT) SHALL BE INSTALLED INSIDE J-BOX WITH RECEPTACLE MOUNTED FACING PARALLEL TO THE WALL. (SEE DETAIL #3)
  - S3 4" X 4" X 2" DEEP J-BOX WITH DUPLEX RING (SINGLE H GANG) FLUSH WITH STAINLESS STEEL COVERPLATE WITH 3/8" R CENTER HOLE. MOUNTING HEIGHT AND CONDUIT REQUIREMENTS U AS NOTED ON PLAN.
  - S4 4" X 4" X 2" DEEP J-BOX MOUNTED ABOVE T-BAR CEILING (VERIFY EXACT LOCATION)
  - C1 6" X 6" X 4" DEEP J-BOX, FLUSH MOUNTED BEHIND VIDEO CABINET AND 12" FROM 4-FLEX RECEPTACLE. REQUIRES METAL LOUVERED COVERPLATE WITH 2" CENTER HOLE. (SEE DETAIL #4).
  - C2 4" X 4" X 2" DEEP J-BOX WITH 2 X 4 DUPLEX RING AND STAINLESS STEEL BLANK COVERPLATE (SEE DETAIL # 5).
  - C3 6" X 6" X 4" DEEP AUDIO J-BOX, FLUSH MOUNTED WITH BLANK COVERPLATE (SEE DETAIL #1). STUB (2) 1" C. ABOVE CEILING.
- NOTES: 1) ALL CONDUIT SHALL BE 3/4" UNLESS NOTED OTHERWISE.  
 2) ALL CONDUITS AND BOXES SHALL BE MARKED AND PROVIDED WITH PULL STRING.

