

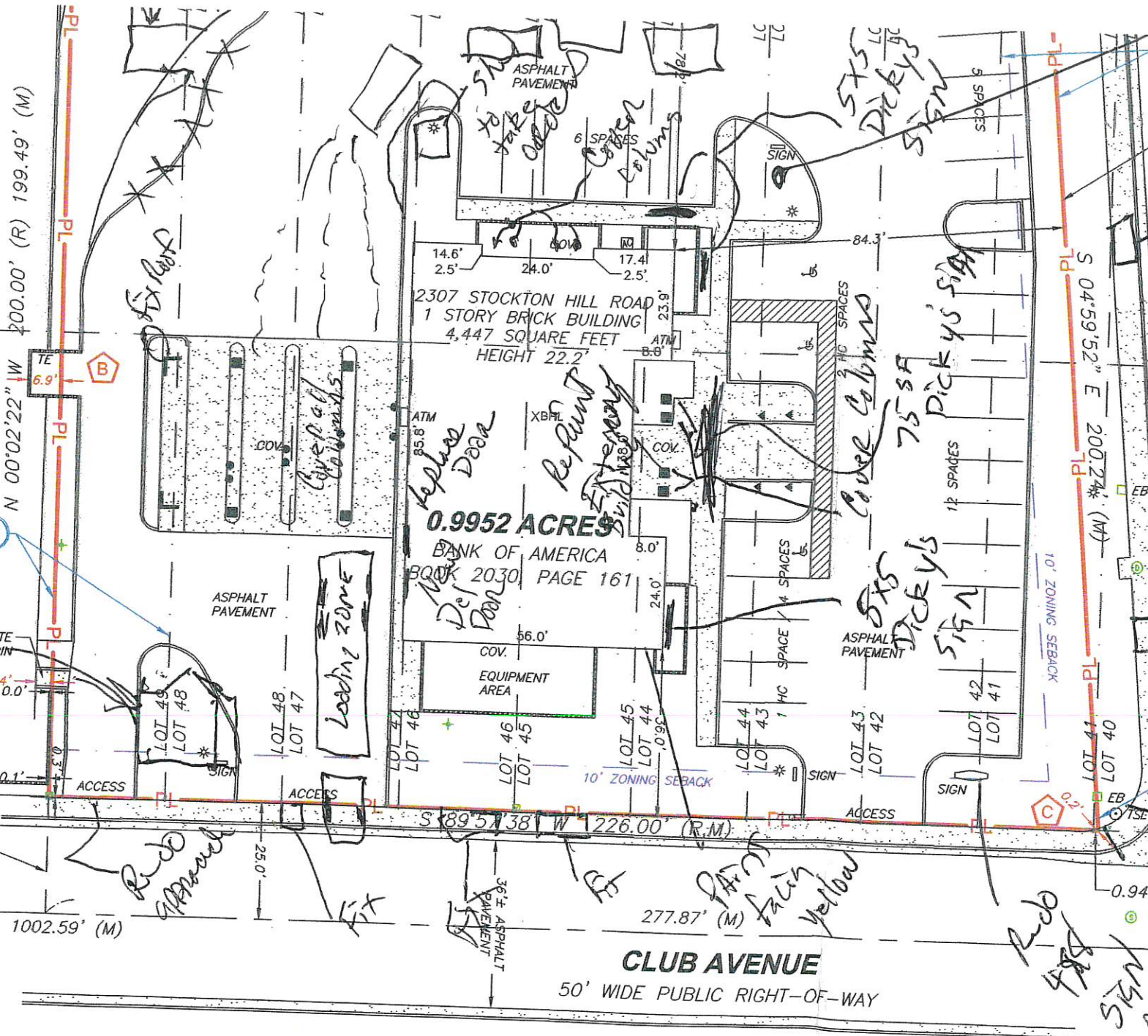
STOCKTON HILL ROAD
(FORMERLY HALL STREET)
VARIABLE WIDTH PUBLIC RIGHT-OF-WAY

EXCEPTION FROM LEGAL DESCRIPTION
BOOK 305, PAGE 45
BOOK 305, PAGE 47

10 OVER LOT 2
BOOK 44, PAGE 596

9 UTILITY EASEMENT
OVER LOT 40
BOOK 44, PAGE 595

INTERSECTION OF CLUB AVENUE & STOCKTON HILL ROAD ESTABLISHED BY TIES



0.9952 ACRES

BANK OF AMERICA
BOOK 2030, PAGE 161

2307 STOCKTON HILL ROAD
1 STORY BRICK BUILDING
4,447 SQUARE FEET
HEIGHT 22.2'

KC POSSE, LLC
INST. NO. 2013064683

UTILITY EASEMENT
OVER LOT 48
BOOK 46, PAGE 552

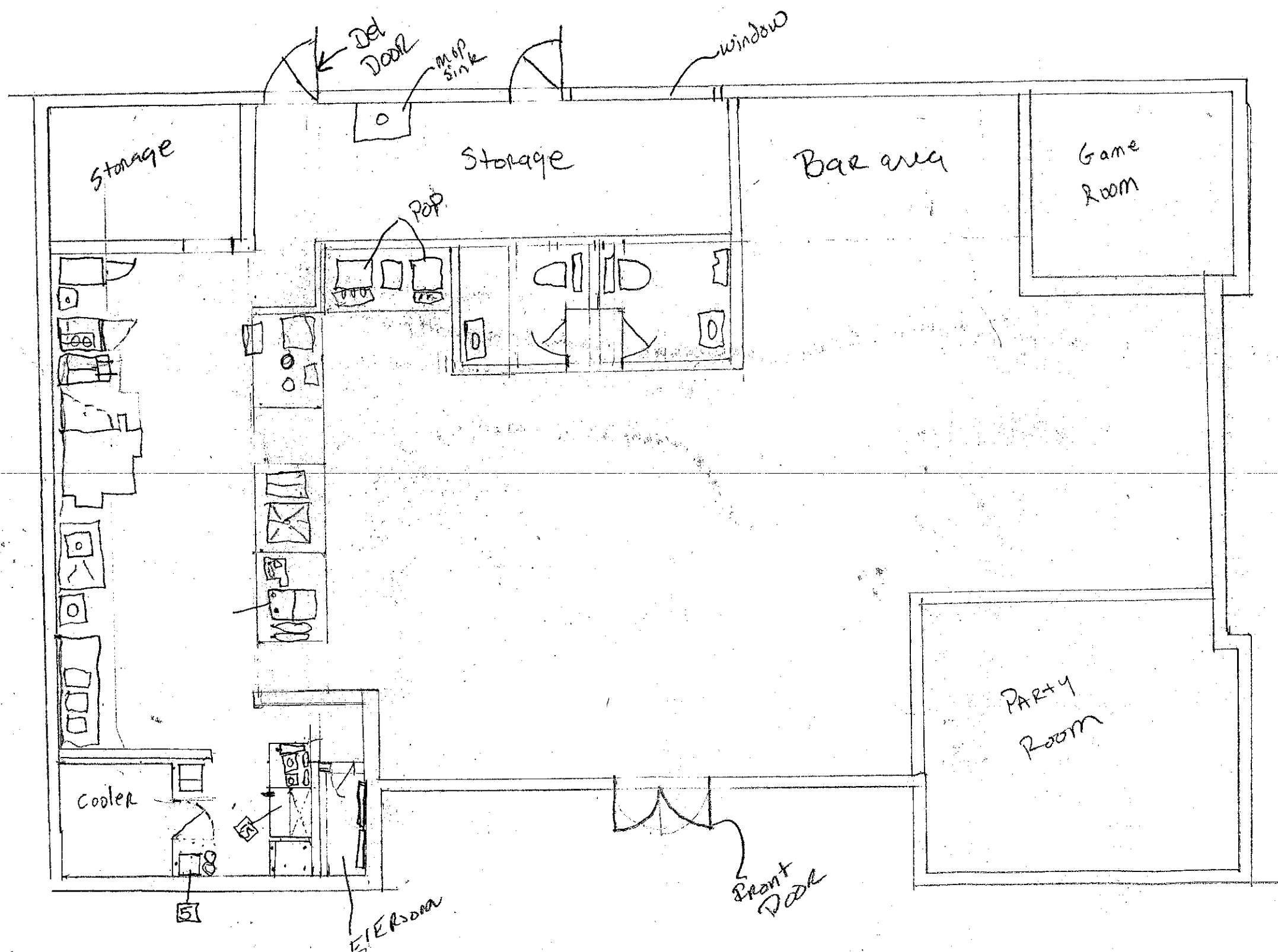
S 00°02'22" E
25.00' (M)

N 89°57'38" E 1002.59' (M)

CLUB AVENUE

50' WIDE PUBLIC RIGHT-OF-WAY

7 POSSIBLE ENCROACHMENTS



Dicky's Kingman Pre layout