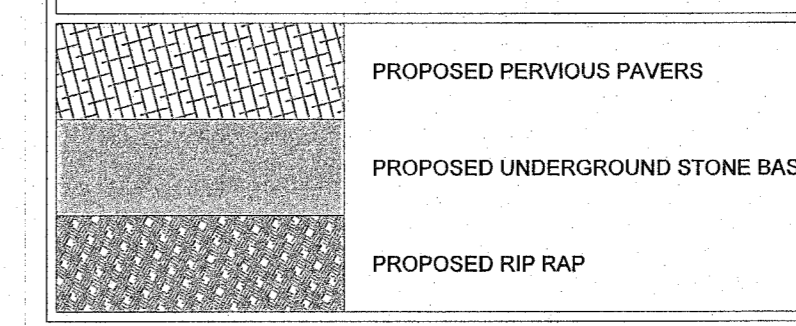


### GRADING NOTES

- ALL SPOT GRADES ARE TO BOTTOM OF CURB UNLESS OTHERWISE NOTED. CONTRACTOR TO ADD 6" FOR TOP OF CURB AS NECESSARY.
- NO EARTHEN SLOPE SHALL BE GREATER THAN 3:1, UNLESS OTHERWISE NOTED.
- MAXIMUM SLOPE IN ACCESSIBLE PARKING SPACES AND SIDEWALK LANDINGS SHALL NOT EXCEED 2.0% IN ALL DIRECTIONS.
- MAXIMUM RUNNING SLOPE SHALL NOT EXCEED 5% AND GROSS SLOPE SHALL NOT EXCEED 2% ON ALL SIDEWALKS UNLESS OTHERWISE NOTED. RUNNING SLOPE MAY EXCEED 5% IN PUBLIC R.O.W. IF EXISTING ROAD SLOPE EXCEEDS 5%.
- GENERAL CONTRACTOR TO REFERENCE NOTE 1 REGARDING SPOT ELEVATIONS, AND COORDINATE WITH DIRT AND LANDSCAPE SUBCONTRACTORS REGARDING PROPOSED SOIL AND HYDROMULCH LOCATIONS TO ENSURE ADEQUATE GUT FOR FUTURE VEGETATION.
- EXISTING MANHOLE TOPS, VALVE BOXES, ETC. ARE TO BE ADJUSTED AS REQUIRED TO MATCH PROPOSED GRADES. IF NECESSARY, READJUSTMENTS SHALL BE PERFORMED UPON COMPLETION OF PAVING AND FINE GRADING TO ENSURE A SMOOTH TRANSITION.
- REFERENCE LANDSCAPE PLAN FOR DETAILS FOR ANY RAMPS, HANDRAILS, AND STAIRS.

### HATCH LEGEND



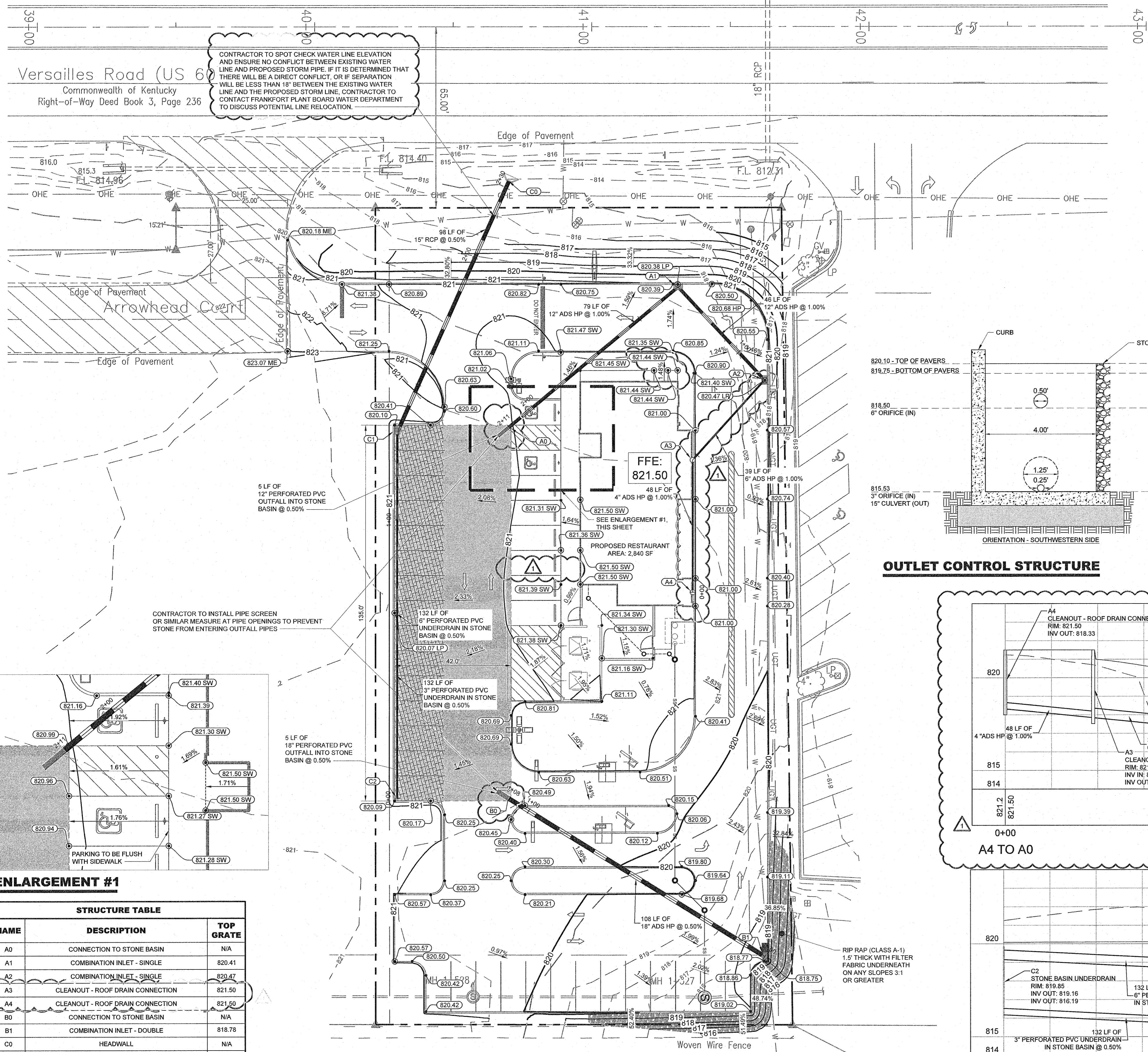
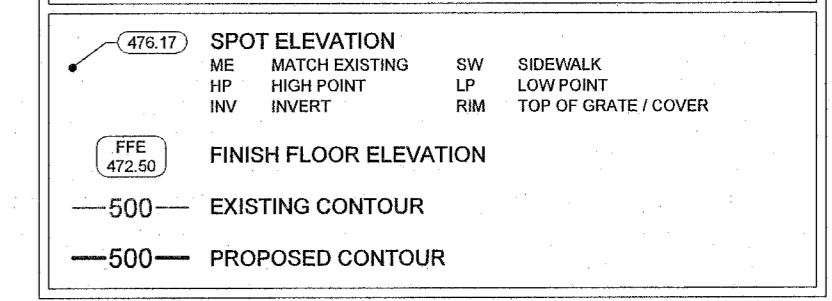
### STORMWATER QUALITY CALCULATIONS

PER THE CITY OF FRANKFORT AND FRANKLIN COUNTY, KENTUCKY STORMWATER PROCEDURES MANUAL SECTION 3.7, DATED FEBRUARY 2019, NEW DEVELOPMENT PROJECTS ARE REQUIRED TO TREAT RUNOFF OF 90% OF THE AVERAGE ANNUAL RAINFALL, WHICH IS CONSIDERED THE "FIRST FLUSH". STORMWATER BMPs MUST BE SIZED TO CAPTURE AND TREAT THIS DEFINES WATER QUALITY VOLUME WHICH IS DEFINED BY THE CITY/COUNTY AS THE FIRST 0.87 INCHES OF RAINFALL FROM THE SITE. THE WATER QUALITY VOLUME (WQV) EQUATION, WHICH FORMS THE FOUNDATION OF THE CITY/COUNTY STORMWATER QUALITY MANAGEMENT PROGRAM, ESTABLISHES THE VOLUME THAT MUST BE TREATED. SEE CALCULATIONS BELOW.

REQUIRED WATER QUALITY VOLUME  
 $WQV = (P * R * A) / 12$   
 P = AVERAGE RAINFALL IN INCHES  
 $= 0.87$  INCHES  
 $R =$  VOLUMETRIC RUNOFF COEFFICIENT  
 $= 0.05 + 0.009(I)$  WHERE I IS THE PERCENT IMPERVIOUS COVER  
 $= 0.054$   
 A = TOTAL AREA TO BE DISTURBED IN SQUARE FEET  
 $= 41,748$  SF  
 $WQV = (0.87 * 0.054 * 41,748) / 12$   
 $= 2,070$  CUBIC FEET REQUIRED

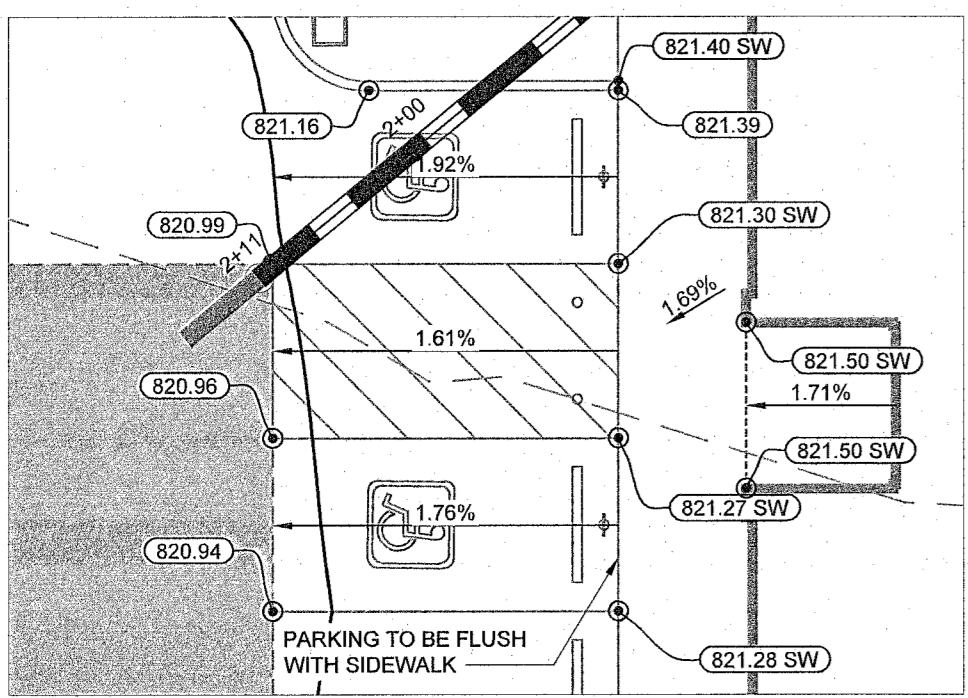
PROVIDED UNDERGROUND STONE BASIN VOLUME  
 $V = 135$  FT \*  $42$  FT \*  $4.35$  FT \*  $40\%$  VOID SPACE  
 $= 9,639$  CUBIC FEET PROVIDED  
 $= 357$  CUBIC YARDS PROVIDED

### GRADING PLAN LEGEND

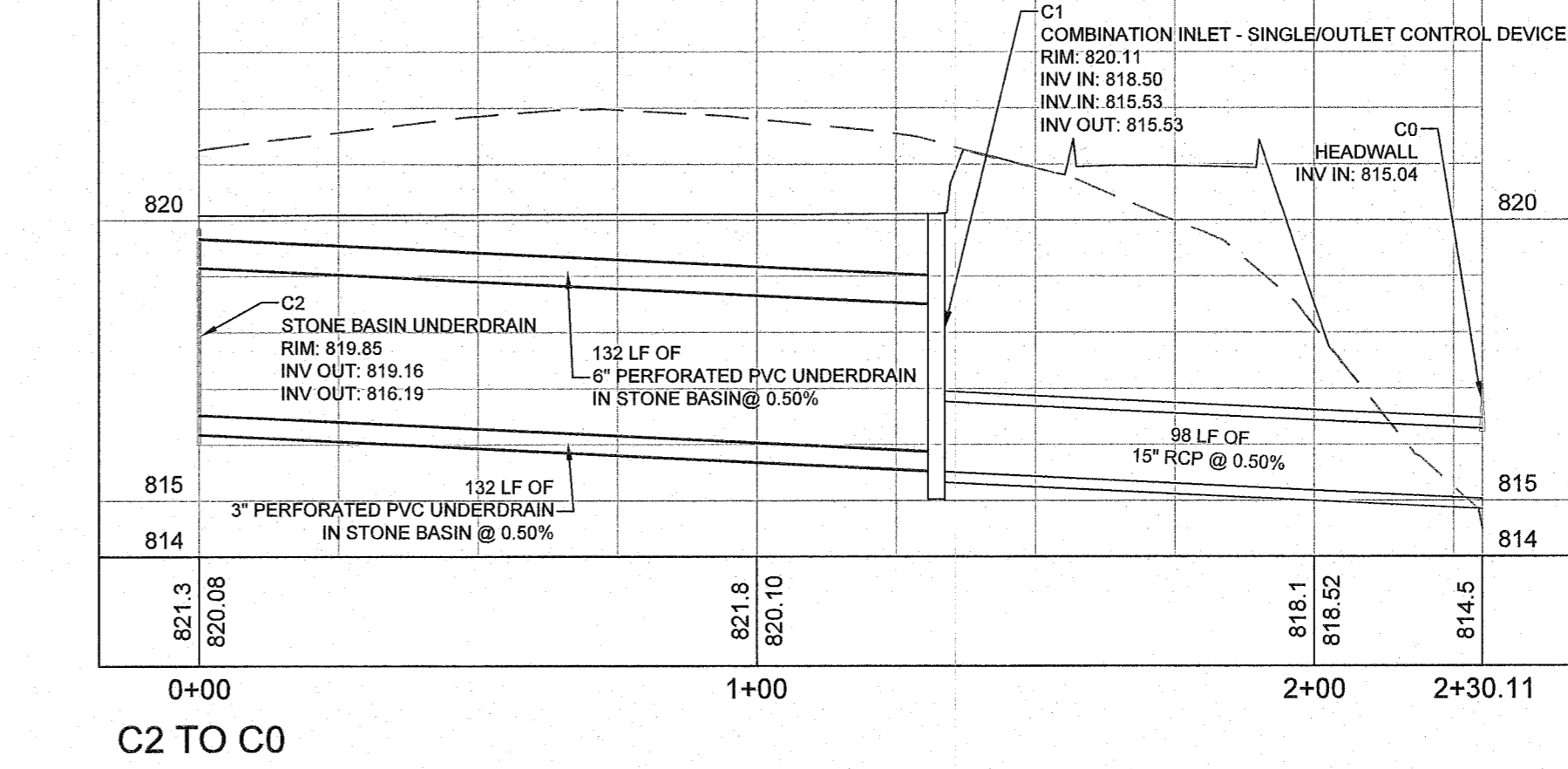
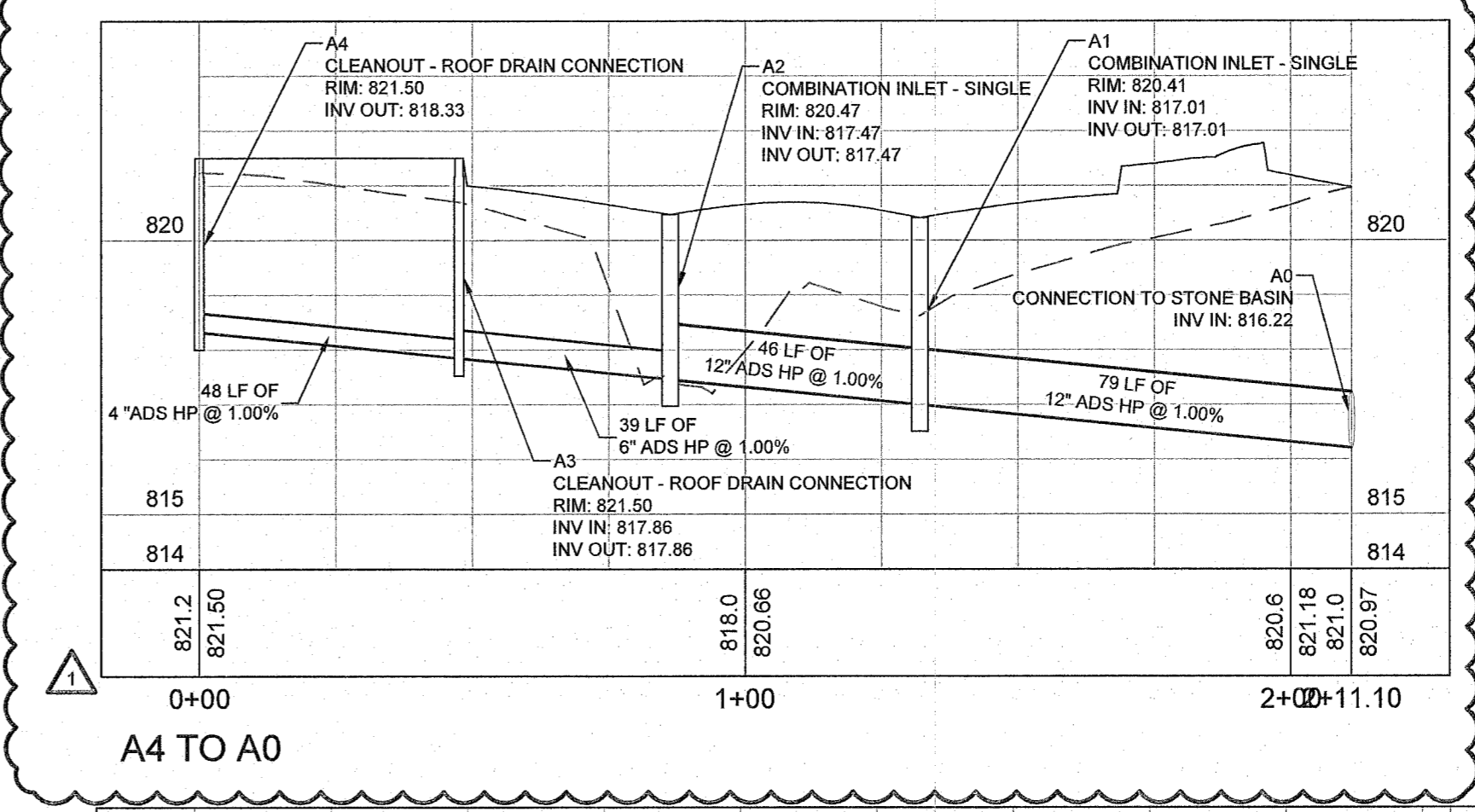
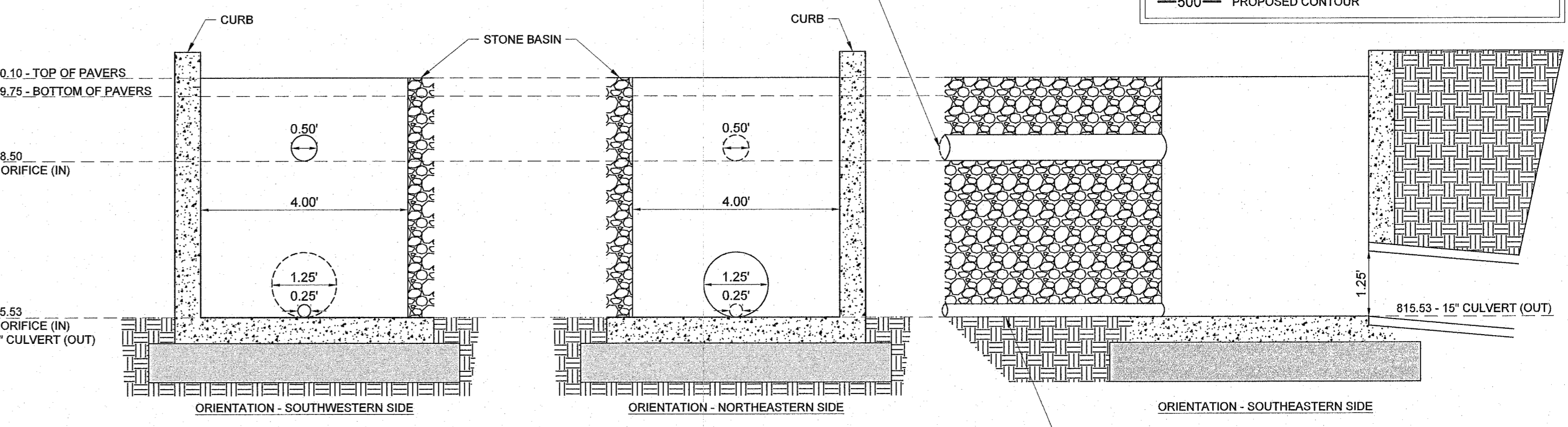


CONTRACTOR TO SPOT CHECK WATER LINE ELEVATION AND ENSURE NO CONFLICT BETWEEN EXISTING WATER LINE AND PROPOSED STORM PIPE. IF IT IS DETERMINED THAT THERE WILL BE A DIRECT CONFLICT, OR IF SEPARATION WILL BE LESS THAN 18" BETWEEN THE EXISTING WATER LINE AND THE PROPOSED STORM LINE, CONTRACTOR TO CONTACT FRANKFORT PLANT BOARD WATER DEPARTMENT TO DISCUSS POTENTIAL LINE RELOCATION.

CONTRACTOR TO INSTALL PIPE SCREEN OR SIMILAR MEASURE AT PIPE OPENINGS TO PREVENT STONE FROM ENTERING OUTFALL PIPES



### OUTLET CONTROL STRUCTURE

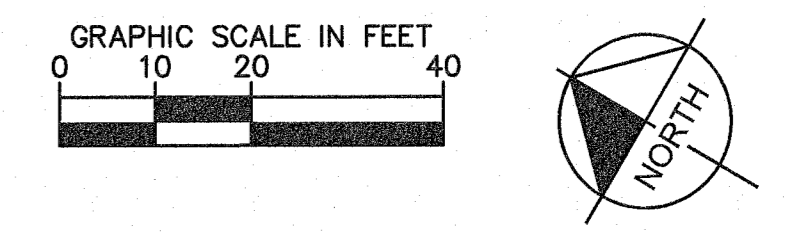


### ENLARGEMENT #1

STRUCTURE TABLE		
NAME	DESCRIPTION	TOP GRATE
A0	CONNECTION TO STONE BASIN	N/A
A1	COMBINATION INLET - SINGLE	820.41
A2	COMBINATION INLET - SINGLE	820.47
A3	CLEANOUT - ROOF DRAIN CONNECTION	821.50
A4	CLEANOUT - ROOF DRAIN CONNECTION	821.50
B0	CONNECTION TO STONE BASIN	N/A
B1	COMBINATION INLET - DOUBLE	818.78
C0	HEADWALL	N/A
C1	COMBINATION INLET - SINGLE/OUTLET CONTROL DEVICE	820.11
C2	STONE BASIN UNDERDRAIN	N/A

PIPE TABLE						
NAME	UPSTREAM	DOWNSTREAM	SIZE	LENGTH	SLOPE	MATERIAL
A1 - A0	817.01 (A1)	816.22 (A0)	12"	80'	1.00%	ADS HP
A2 - A1	817.47 (A2)	817.01 (A1)	12"	46'	1.00%	ADS HP
A3 - A2	817.86 (A3)	817.47 (A2)	6"	39'	1.00%	ADS HP
A4 - A3	818.33 (A4)	817.86 (A3)	4"	48'	1.00%	ADS HP
B1 - B0	816.28 (B1)	815.74 (B0)	18"	109'	0.50%	ADS HP
C1 - C0	815.53 (C1)	815.04 (C0)	15"	98'	0.50%	RCP
C2 - C1	816.19 (C2)	815.53 (C1)	3"	133'	0.50%	PVC
C2 - C1	819.16 (C2)	818.50 (C1)	6"	133'	0.50%	PVC

**PERMIT SET**



Drawing name: W:\kyle-horn.com\ag\_nash\18423003 - burger king - frankfort\18423003 - OVERALL.dwg 2.3.1 GRADING PLAN File 07, 2022 6:14pm by: Madison Molitor  
This document, together with the concepts and designs presented herein, is an instrument of service, is intended only for the specific purpose and client for which it was prepared. Reuse of and improper reliance on this document without written authorization and adaptation by Kimley-Horn and Associates, Inc. shall be without liability to Kimley-Horn and Associates, Inc.