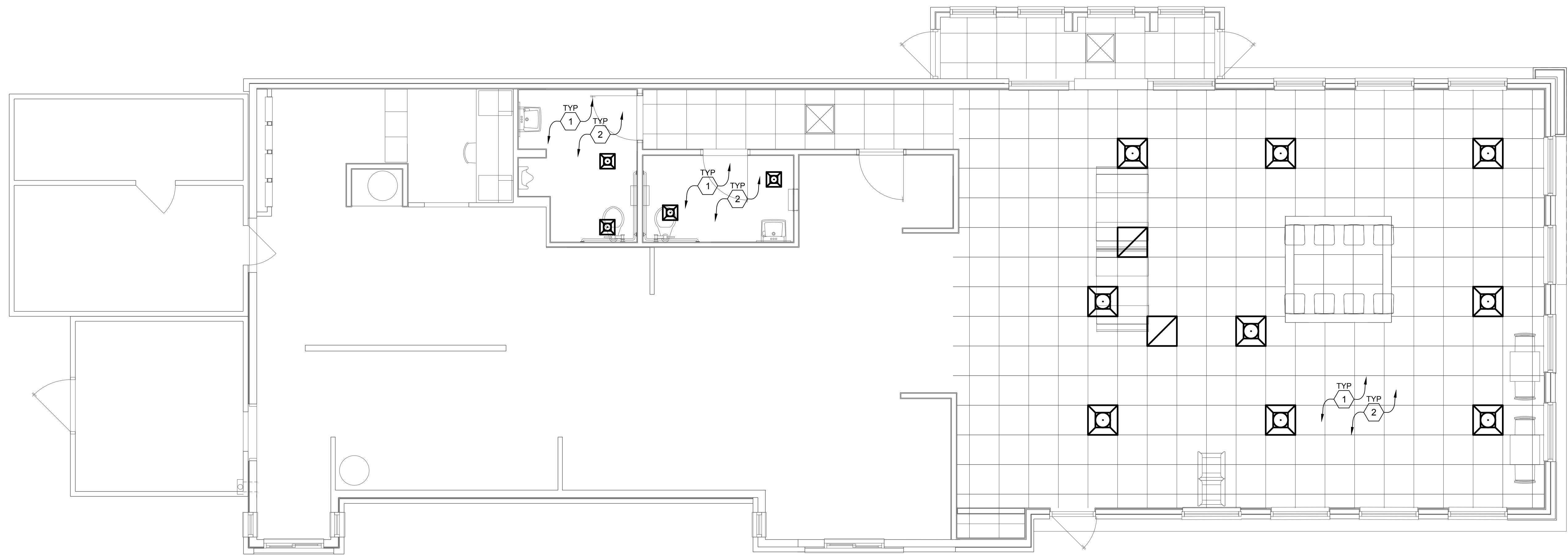


ATTENTION ALL BIDDERS
 REFER TO WENDY'S APPROVED SUPPLIER LIST TO OBTAIN NATIONAL ACCOUNT PHONE NUMBERS AND CONTACTS

MECHANICAL LEGEND			
SYMBOL	DESCRIPTION	SYMBOL	DESCRIPTION
	DIFFUSER		EQUIPMENT MARK
	RETURN AIR GRILLE		EQUIPMENT NUMBER
	RETURN OR EXHAUST DUCT UP		INDICATES DETAIL, PLAN, SECTION, AND/OR DIAGRAM (APPLIES ONLY WHERE INDICATED ON DRAWINGS)
	SUPPLY DUCT UP		INDICATES DRAWING ON WHICH DETAIL APPEARS
	SUPPLY DUCT DOWN		INDICATES TYPICAL DETAIL (APPLIES TO ALL CONTRACT DRAWINGS)
	RETURN OR EXHAUST DUCT DOWN		INDICATES DRAWING ON WHICH DETAIL APPEARS
	ROUND DUCT DOWN		INDICATES SECTION NUMBER
	ROUND DUCT UP		INDICATES ON WHICH DRAWING SECTION APPEARS
	VANED ELBOW		INDICATES REVISION & NUMBER
	LOW PRESSURE FLEX DUCT		CONNECT NEW TO EXISTING
	45° TAKEOFF FITTING		SHEET NOTE NUMBER
	MANUAL VOLUME DAMPER		MARK
			NECK SIZE
			CFM
			THERMOSTAT
			SENSOR
			DOOR
			UNDERCUT
			ABBREVIATIONS
		AFF	ABOVE FINISHED FLOOR
		BTU	BRITISH THERMAL UNIT
		CFM	CUBIC FEET PER MINUTE
		COMP	COMPRESSOR
		DB	DRY BULB
		DN	DOWN
		DX	DIRECT EXPANSION
		EA	EACH
		EAT	ENTERING AIR TEMPERATURE
		EFF	EFFICIENCY
		ESP	EXTERNAL STATIC PRESSURE
		ETC	AND SO FORTH
		ETR	EXISTING TO REMAIN
		EX	EXHAUST
		°F	DEGREES FAHRENHEIT
		FLA	FULL LOAD AMPS
		PPM	FEET PER MINUTE
		FT	FEET
		GPM	GALLONS PER MINUTE
		GRS/LB	GRAINS PER POUND
		HP	HORSEPOWER
		HZ	HERTZ
		IN	INCHES
		KW	KILOWATT
		MBH	THOUSANDS OF BTU PER HOUR
		MIN	MINIMUM
		NEG	NEGATIVE
		NTS	NOT TO SCALE
		OA	OUTSIDE AIR
		OBD	OPPOSED BLADE DAMPER
		OC	ON CENTER
		PH	PHASE
		PSI	POUNDS PER SQUARE INCH
		RH	RELATIVE HUMIDITY
		SA	SUPPLY AIR
		SH	SENSIBLE HEAT
		SP	STATIC PRESSURE
		TEMP	TEMPERATURE
		TYP	TYPICAL
		UC	UNDERCUT
		VOLT	VOLTAGE
		W/O	WITHOUT
		WB	WET BULB
		WC	WATER COLUMN

- ### GENERAL NOTES
- PROVIDE WARRANTY TO INCLUDE LABOR AND MATERIALS TO REPAIR OR REPLACE DEFECTIVE PARTS AND MATERIALS AS REQUIRED FOR ONE YEAR AFTER SUBSTANTIAL COMPLETION OR OWNER ACCEPTANCE OF THE COMPLETED PROJECT.
 - INSULATED FLEXIBLE DUCT MAY BE USED IN MAXIMUM LENGTHS OF 5'-0" PER BRANCH RUN, FROM RIGID METAL DUCT TO DIFFUSER CONNECTION. FLEXIBLE DUCT SHALL BE CLASS 1 FLEXIBLE AIR DUCT WITH INSULATION AND VAPOR BARRIER.
 - SPIN-IN FITTING WITH DAMPER SHALL BE FLEXAIRE RF OR METALAIR MBSDB, TYPICAL OF ALL BRANCH DUCT RUNS. MANUAL BALANCE DAMPERS SHALL BE IN AN ACCESSIBLE LOCATION. COORDINATE WITH GENERAL CONTRACTOR.
 - DUCTWORK DIMENSIONS SHOWN ARE CLEAR INSIDE DIMENSIONS. ALL SUPPLY AND RETURN DUCTWORK SHOWN IS TO BE INSULATED WITH 2" DUCT WRAP, INCLUDING THE TOP OF THE DIFFUSERS. THE INSULATION SHALL HAVE A MINIMUM R-VALUE OF 5.
 - COMPLETED INSTALLATIONS SHALL CONFORM TO ALL APPLICABLE LOCAL, STATE, AND FEDERAL CODES AND ORDINANCES INCLUDING, BUT NOT LIMITED TO THE LATEST EDITIONS OF THE FOLLOWING: STATE BUILDING CODE, NFPA-90A, NFPA-96 AND NFPA-101.
 - ALL DUCTWORK IS TO BE INSTALLED PER SMACNA SPECIFICATIONS.
 - ALL 90 DEGREE BENDS IN SUPPLY AIR DUCTS TO HAVE TURNING VANES.
 - SEE ARCHITECTURAL REFLECTED CEILING PLAN FOR MORE INFORMATION.
 - DUCTWORK TO BE RUN ABOVE THE SUSPENDED CEILING, WHENEVER POSSIBLE ALL DUCTWORK RUNNING PARALLEL TO THE ROOF JOIST SHALL BE RAISED UP AND RUN BETWEEN THE JOISTS, EXCEPT EXPOSED DUCTWORK.
 - CONTRACTOR TO VISIT THE SITE PRIOR TO BID AND VERIFY ALL PERTINENT EXISTING CONDITIONS.
 - ANY DAMAGES TO ANY EXISTING WALLS, FLOORS, FINISHES ETC. BY THIS CONTRACTOR ARE TO BE REPAIRED AT THIS CONTRACTOR'S EXPENSE.
 - CLEAN AND REFURBISH ALL EXISTING UNITS, EXHAUST FANS, DUCT ACCESSORIES, AND CONTROLS TO LIKE NEW CONDITION.
 - CLEAN AND REFURBISH ALL DUCTWORK AND DAMPERS.
 - RELOCATE EXISTING THERMOSTATS/SENSORS AS NEEDED. EXTEND EXISTING WIRE AS REQUIRED. REPAIR OR REPLACE AS NECESSARY FOR A COMPLETE AND OPERATIONAL SYSTEM.
 - REFURBISH RESTROOM EXHAUST FANS TO LIKE NEW CONDITION. REPAIR/REPLACE AS REQUIRED EXTEND EXISTING RESTROOM DUCTWORK AS REQUIRED FOR NEW LOCATION.
 - CONTRACTOR TO RE-BALANCE ALL UNITS/HOODS/FANS SUCH THAT THE KITCHEN AREA IS NEGATIVE TO THE DINING AREA BUT THE BUILDING AS A WHOLE MAINTAINS POSITIVE PRESSURIZATION.
 - G.C. TO VERIFY EXISTING ANSUL FIRE SUPPRESSION SYSTEM AT HOODS IS COMPLIANT.
 - PROVIDE STENCIL LABELS ON ROOFTOP UNITS AND EXHAUST FANS. LABELS SHALL HAVE 2" HIGH LETTERS ON UNIT SIDE ACCESS PANEL. ALL EXPOSED GAS PIPING AND FITTINGS SHALL BE PAINTED WITH SAFETY YELLOW PAINT DESIGNED FOR BLACK IRON.
 - CONTRACTORS AND SUB-CONTRACTORS SHALL CAREFULLY REVIEW THE CONSTRUCTION DOCUMENTS. INFORMATION REGARDING THE COMPLETE WORK IS DISPERSED THROUGHOUT THE DOCUMENT SET AND CANNOT BE ACCURATELY DETERMINED WITHOUT REFERENCE TO THE COMPLETE DOCUMENT SET.
 - COORDINATE WITH THE WORK OF OTHER SECTIONS, EQUIPMENT FURNISHED BY OTHERS, REQUIREMENTS OF THE OWNER, AND WITH THE CONSTRAINTS OF THE CONDITIONS OF THE PROJECT SITE. PROVIDE DUCT RISERS AND DROPS AS REQUIRED FOR FIELD INSTALLATION AND TRADE COORDINATION. NOTIFY ARCHITECT OF ANY DISCREPANCIES BEFORE STARTING WORK.
 - DRAWINGS FOR HVAC WORK ARE DIAGRAMMATIC, SHOWING THE GENERAL LOCATION, TYPE, LAYOUT, AND EQUIPMENT REQUIRED. THE DRAWINGS SHALL NOT BE SCALED FOR EXACT MEASUREMENT. REFER TO ARCHITECTURAL DRAWINGS FOR DIMENSIONS. REFER TO MANUFACTURER'S STANDARD INSTALLATION DRAWINGS FOR EQUIPMENT CONNECTIONS AND INSTALLATION REQUIREMENTS. PROVIDE DUCTWORK, CONNECTIONS, ACCESSORIES, OFFSETS, AND MATERIALS NECESSARY FOR A COMPLETE SYSTEM.

- ### CODED NOTES
- ALL EXISTING MECHANICAL EQUIPMENT TO REMAIN UNLESS NOTED OTHERWISE. CLEAN AND REFURBISH EXISTING EQUIPMENT AND ASSOCIATED PROVISIONS TO LIKE NEW CONDITION.
 - REPLACE EXISTING DIFFUSERS AND GRILLES IN THE DINING AREA AND BATHROOM WITH NEW. MODIFY AND EXTEND EXISTING DUCTWORK AS REQUIRED FOR FULL AND COMPLETE OPERATION.



1 MECHANICAL PLAN
 SCALE: 1/4" = 1'-0"

SITE NUMBER:	01325
BUILDING TYPE:	3076
ASSET TYPE:	FREESTANDING
CLASSIFICATION:	REFRESH
OWNER:	STARBOARD
BASE VERSION:	2021 SUMMER
UPGRADE CLASSIFICATION:	
	N/A
PROJECT YEAR:	2021
DESIGN TYPE:	(2.0) UM BRIGHT
DRAWING RELEASE:	SUMMER 2021

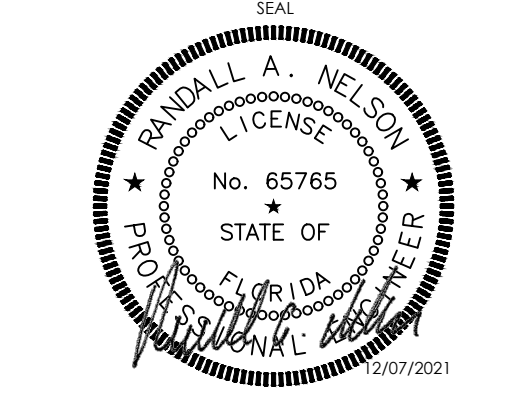


STARBOARD GROUP
 12540 W. ATLANTIC BLVD.
 CORAL SPRINGS, FL 33071
 OFFICE: (954)255-2266

PROJECT TYPE: 3076
 REFRESH

Wendy's
 #01741 (STARBOARD #463)
 2650 W. NEW HAVEN AVE.
 MELBOURNE, FL 32904

REV.	DATE	DESCRIPTION



SHEET NAME
MECHANICAL PLAN

SHEET NUMBER
M1.1

12/27/2021 4:18 PM C:\wendy's - Linear\212045 Wendy's - Melbourne - FL\Sheet\011 - MECHANICAL PLAN.dwg AutoCAD