

SYMBOL LEGEND

SYMBOL	DESCRIPTION
X###	EQUIPMENT TAGS
###	EQUIPMENT TAGS
XX#	ARTPACK AND WAYFINDING TAGS

ARTPACK & WAYFINDING LEGEND

MARK	DESCRIPTION
AP-23	WENDY'S LOCAL LOVE (CUSTOM STATE AND STAR LOCATOR)
AP-24	WINK WALL FRAMED GRAPHIC
AP-25	INTERIOR READER BOARD
AP-26	CAUSE PAINTING AND PLAQUE (3 VERSIONS)
AP-30	WELCOME WALL ART
NP-S	NUTRITION POSTER
WF-20	TACTILE EXIT SIGN
WF-21	HAND WASHING SIGN
WF-22	FAMILY RESTROOM SIGN
WF-22A	FAMILY RESTROOM SIGN ACCESSIBLE
WF-23	MEN'S ROOM SIGN
WF-23A	MEN'S ROOM SIGN ACCESSIBLE
WF-25	WOMEN'S ROOM SIGN
WF-25A	WOMEN'S ROOM SIGN ACCESSIBLE
WF-27	WOMEN'S ROOM SIGN
WF-27A	WOMEN'S ROOM SIGN ACCESSIBLE
WF-31	EMPLOYEE ONLY
WF-32	NOT AN ENTRANCE

REFER TO RESPONSIBILITY SCHEDULE FOR ARTPACK INFORMATION

GENERAL NOTES

- GENERAL NOTES**
- G.C. SHALL COORDINATE REQUIREMENTS OF MILLWORK, SPECIALTIES, EQUIPMENT, AND FURNISHINGS WITH OWNER PRIOR TO START OF WORK.
 - ELECTRICAL & PLUMBING REQUIREMENTS FOR THE INSTALLATION OF MILLWORK, SPECIALTIES, EQUIPMENT, AND FURNISHINGS IS THE RESPONSIBILITY OF THE G.C.
 - EQUIPMENT LISTED IS TO BE FURNISHED BY THE KITCHEN EQUIPMENT DISTRIBUTOR UNLESS NOTED OTHERWISE.
 - KITCHEN EQUIPMENT DISTRIBUTOR PROVIDES LABOR FOR UNCRATING, ASSEMBLY AND SETTING OF EQUIPMENT.
 - KITCHEN EQUIPMENT DISTRIBUTOR WILL SUPPLY CRITICAL DIMENSIONS, PLUMBING AND ELECTRICAL SPECIFICATIONS FOR EQUIPMENT SUPPLIED BY THE KITCHEN EQUIPMENT SUPPLIER.
 - ELECTRICAL AND PLUMBING CONTRACTOR TO MAKE FINAL CONNECTION TO EQUIPMENT
 - SEE INTERIOR ELEVATIONS FOR ARTPACK GRAPHIC LOCATIONS.
 - SIGNAGE TO BE SUBMITTED UNDER SEPARATE PERMIT.
 - THE GENERAL CONTRACTOR SHALL PROVIDE A CONTINGENCY BID FOR WORK IN THE BACK OF HOUSE/KITCHEN AREA BEYOND THE SCOPE OF THIS REMODEL SHOWN ON THESE DOCUMENTS. COORDINATE ANY/ALL WORK BID, PROPOSED, OR REQUIRED WITH THE OWNER'S CONSTRUCTION REPRESENTATIVE PRIOR TO PURCHASING OR BEGINNING ANY WORK BEYOND THE LIMITED SCOPE SHOWN ON THESE CONSTRUCTION DOCUMENTS.
 - THE CONTRACTOR SHALL PROVIDE AND INSTALL SOLID WOOD BLOCKING FOR ALL WALL MOUNTED ITEMS, SIGNAGE, EQUIPMENT, MILLWORK, ETC. COORDINATE LOCATIONS WITH OWNER'S CONSTRUCTION REPRESENTATIVE AS NECESSARY.
 - EXISTING EQUIPMENT TO REMAIN UNLESS NOTED OTHERWISE.

EQUIPMENT SCHEDULE

MARK	QTY.	DESCRIPTION OF EQUIPMENT	REMARKS	FURNISHED BY	INSTALLED BY
A0105		BEVERAGE SYSTEM, PLUM - FREESTYLE		KED	KED
A0202		BEVERAGE SYSTEM SELF-SERVE DINING ROOM (FREESTYLE)	EXTERIOR COLOR: SILVER (FOR FREESTYLE)	0	0
A0501		ICED TEA DISPENSER-NARROW OVAL		KED	KED
A0502		ICED TEA DISPENSER-ROUNDED FRONT (3 GALLON)		KED	KED
CO401		NAPKIN DISPENSER		KED	KED
C1502		KETCHUP PUMP		KED	KED
C1801		LID/STRAW DISPENSER		KED	KED
D0200		POS TERMINAL		0	0
D1701		COPS SCREEN			
D1702		RUNNER SCREEN			
D1703		CEILING MOUNTED PREMIUM BEVERAGE DISPLAY			
D3002		KIOSK (UM)		0	0
E14XX		FRONT COUNTER		KED	KED
E4302		BAKERY CASE		KED	KED
G1402		CHASE @ FREESTYLE		KED	KED
N0202		CASH DROP BOX		KED	KED
OP0222		ICE MACHINE - DINING ROOM W/ REMOTE CONDENSING UNIT - DINING ROOM (ROOF)	# KITCHEN EQUIPMENT SUPPLIER TO VERIFY ACTUAL EQUIPMENT / MODEL / FINISH TO BE USED *QUANTITY WILL VARY DEPENDING ON EXACT BEVERAGE SYSTEM CONFIGURATION	KED	KED
R0105		TRASH RECEPTACLE (2 BIN ENCLOSURE)		KED	KED
R0106		TRASH RECEPTACLE (3-STREAM - CANADA)		KED	KED
R0302		CONDIMENT STAND (w DRAIN)		KED	KED
R0510		CHAIR - STANDARD HEIGHT		KED	KED
R0511		CHAIR - BAR HEIGHT		KED	KED
R0512		STOOL, 24" HIGH		KED	KED
R1603		HIGH CHAIRS		KED	KED
R1705		BOOSTER CHAIR		KED	KED
R2002		TABLE TOP: 24" X 24"		KED	KED
R2016		TABLE TOP: 24" X 42"		KED	KED
R2016S		TABLE TOP: 24" X 42" - STENCIL		KED	KED
R2027		TABLE TOP: 30" DIAMETER		KED	KED
R2043		FAMILY TABLE TOP: 30" X 66" (6 SEAT)		KED	KED
R2044		FAMILY TABLE TOP: 24" X 62" (6 SEAT)		KED	KED
R2045		COMMUNITY W-TABLE (FREESTANDING, 8 SEAT, 96" LONG)		KED	KED
R2046		COMMUNITY W-TABLE (CANTILEVERED, 8 SEAT, 96" LONG)		KED	KED
R2047		COMMUNITY W-TABLE (FREESTANDING, 10 SEAT, 120" LONG)		KED	KED
R2048		COMMUNITY W-TABLE (CANTILEVERED, 10 SEAT, 120" LONG)		KED	KED
R2109		TABLE BASE: 2-TOP - FIXED		KED	KED
R2110		TABLE BASE: 4-TOP - FIXED		KED	KED
R2111		TABLE BASE: 4-TOP ACCESSIBLE - FIXED		KED	KED
R2112		TABLE BASE: 22" X-BASE - FREE STANDING		KED	KED
R2113		TABLE BASE: 22" T-BASE (ACCESSIBLE) - FREE STANDING	2 BASES REQUIRED PER TABLE	KED	KED
R2114		TABLE BASE: 22" X-BASE (COUNTER HGT 34" - FREE STANDING)		KED	KED
R2133		CANTILEVER TABLE BRACKET (4-TOP)		KED	KED
R2310		42" SINGLE BOOTH - STANDARD (WOOD)		KED	KED
R2313		42" DOUBLE BOOTH - STANDARD (WOOD)		KED	KED
R2439		LOW WALL AT "W" TABLE		KED	KED
R2440		U WALL AT BOOTHS		KED	KED
R2702		BENCH 15'-10"		KED	KED
R2712		BENCH 26'-4"		KED	KED
R2713		BENCH 24'-6"		KED	KED
R3310		KIOSK LEDGE (UM, 3 STATIONS) - 89"		0	0
R3404		SEAT CUSHION 42" WIDE		0	0
R3405		SEAT CUSHION 24" WIDE		0	0
U0510		BACKLIT STATIC MENU BOARDS	OWNER TO VERIFY ACTUAL EQUIPMENT/MODEL TO BE USED	0	0
U0511		BACKLIT STATIC REVIEW BOARDS	OWNER TO VERIFY ACTUAL EQUIPMENT/MODEL TO BE USED	0	0

0 = OWNER GC = GENERAL CONTRACTOR KED = KITCHEN EQUIPMENT DISTRIBUTOR

SITE NUMBER:	01325
BUILDING TYPE:	3076
ASSET TYPE:	FREE STANDING
CLASSIFICATION:	REFRESH
OWNER:	STARBOARD
BASE VERSION:	2021 SUMMER
UPGRADE CLASSIFICATION:	N/A
PROJECT YEAR:	2021
DESIGN TYPE:	(2.0) UM BRIGHT
DRAWING RELEASE:	SUMMER 2021

Linear Architecture LLC
Philip Kemery,
Architect
4436 Harvest Hill Rd.
Dallas, TX 75244
PHONE: 972.929.9226



STARBOARD GROUP
12540 W. ATLANTIC BLVD.
CORAL SPRINGS, FL 33071
OFFICE: (954)255-2266

PROJECT TYPE: 3076
REFRESH

Wendy's
#01741 (STARBOARD #463)
2650 W. NEW HAVEN AVE.
MELBOURNE, FL 32904

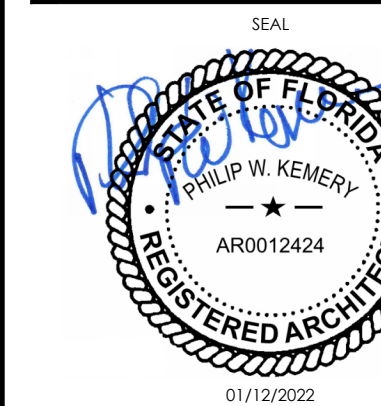
REV.	DATE	DESCRIPTION

ISSUE DATE: 01/14/2021

PROJECT NUMBER: 21-124

DRAWN BY: XXX

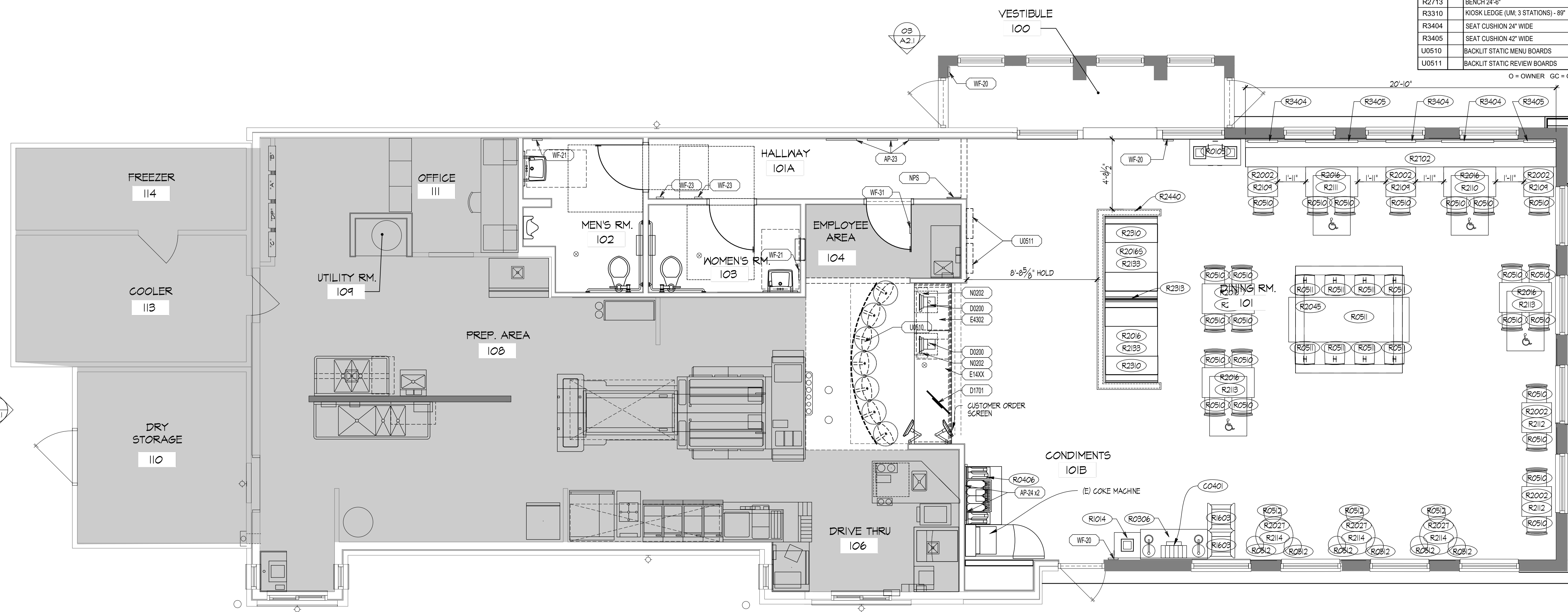
CHECKED BY: XXX



SHEET NAME
EQUIPMENT PLAN

SHEET NUMBER

EQ1.1



01 FLOOR AND EQUIPMENT PLAN
SCALE: 1/4" = 1'-0"