

PLUMBING FIXTURE SCHEDULE						
SYMBOL	FIXTURE TYPE	MANUF.	MODEL	DESCRIPTION	ACCESSORIES/OPTIONS	NOTES (#)
WC	WATER CLOSET (ACCESSIBLE)	SLOAN	ST-2029 (2102029)	FLOOR MOUNT, WHITE VITREOUS CHINA, 1 1/4 GPF ELONGATED SIPHON JET BOWL, 1-1/2" TOP SPUD, & RIM HEIGHT 17" A.F.F.	TOTO #TET1LA32#CP-W 1.28 GPF ECOPOWER SENSOR WATER CLOSET FLUSH VALVE. MAINLINE #M105SS3C00 WHITE OPEN FRONT ELONGATED TOILET SEAT LESS COVER.	(1), (5)
LAV	LAVATORY (ACCESSIBLE)	AMERICAN STANDARD	#0356.921.020 LUCERNE	WALL HUNG 20-1/2" X 18-1/4", WHITE VITREOUS CHINA.	TOTO #TEL105-D10E POLISHED CHROME, SINGLE HOLE, ECOPOWER DECK MOUNTED FAUCET WITH 0.09GPC DISCHARGE (10 SECOND CYCLE).	(1), (2), (5)
MV	MIXING VALVE	ZURN	ZW3870XLT / ZW1070XL	THERMOSTATIC CONTROLLER WITH INTEGRAL CHECKS, ALL BRASS BODY WITH DUAL STAINLESS STEEL STRAINER, VANDAL RESISTANT TEMPERATURE ADJUSTMENT HANDLE.	SET TO 105°F. MOUNT IN ACCESSIBLE LOCATION.	(5)
UR	URINAL (ACCESSIBLE)	SLOAN	SU-1009A	WALL HUNG URINAL, WHITE VITREOUS CHINA.	SLOAN #SU-1009A (1101099) 0.125-0.5 GPF URINAL ADA, TOTO #TEU1UA12#CP 0.125 GPF URINAL FLUSH VALVE.	

NOTES:

- INSTALL IN ACCORDANCE TO ADA ACCESSIBILITY REQUIREMENTS.
- PROVIDE WITH QUARTER TURN BRASS ANGLE COMPRESSION STOPS WITH LOOSE KEY HANDLES, STAINLESS BRAIDED SUPPLIES, CHROME SUPPLY AND DRAIN ESCUTCHEONS, CHROME GRID STRAINER DRAIN WITH TAILPIECE, CHROME PLATED CAST BODY P-TRAP WITH CLEANOUT AND MIXING VALVE (MV). INSULATE WASTE AND WATER PIPING WITH TRUEBRO "LAV-GUARD2" #101-EZ.
- NOT USED.
- NOT USED.
- REFER TO ARCHITECTURAL SUPPLIER PAGE FOR WENDY'S NATIONAL VENDOR PRICING CONTACTS. VERIFY PRIOR TO BID IF GENERAL CONTRACTOR OR OWNER WILL PROVIDE EQUIPMENT.

PLUMBING & EQUIPMENT SCHEDULE												
SYMBOL	QUANTITY	GENERAL FIXTURE DESCRIPTION	DOMESTIC WATER			SANITARY			REMARKS			
			FILTERED WATER	COLD WATER	HOT WATER (110°)	DRAIN LINE SIZE	TRAP	FIXTURE DRAIN		DIRECT / INDIRECT VENT	VENT	VENT
WC	3	WATER CLOSET (ACCESSIBLE)		1"	(8)	4"	INT	4"	D	2"	FL	(1),(3),(6),(7)
LAV	4	LAVATORY		3/2"	3/2"	(8)	1 1/2"	1 1/2"	D	1 1/2"	(8)	(1),(3),(6),(7)
UR	1	URINAL		3/2"	(8)	2"	INT	2"	D	1 1/2"	(8)	(1),(3),(6),(7)

PLUMBING FIXTURES

SYMBOL	QUANTITY	DESCRIPTION	SIZE	TYPE	LOCATION	REMARKS
WC	3	WATER CLOSET (ACCESSIBLE)	1"	INT	FL	(1),(3),(6),(7)
LAV	4	LAVATORY	3/2"	D	(8)	(1),(3),(6),(7)
UR	1	URINAL	3/2"	INT	(8)	(1),(3),(6),(7)

REMARKS (#)

- THIS EQUIPMENT FURNISHED BY PLUMBING CONTRACTOR.
- NOT USED.
- PROVIDE VALVE AT EACH CONNECTION TO EQUIPMENT.
- NOT USED.
- PROVIDE WITH WATTS NO. 009 BACKFLOW PREVENTER.
- NEW FIXTURES CONNECTED TO EXISTING WATER LINES AND DRAINAGE SYSTEM IF REPLACED.
- REFER TO PLUMBING FIXTURE INFORMATION ON THIS SHEET.
- NOT USED.
- NOT USED.
- NOT USED.
- NOT USED.
- NOT USED.
- NOT USED.

- # CODED NOTES:
- CONNECT TO NEAREST EXISTING PIPING OF ADEQUATE SIZE AND CAPACITY. COORDINATE LOCATION, SIZE AND DIRECTION OF EXISTING SANITARY, VENT, AND DOMESTIC COLD WATER MAIN PRIOR TO ROUGH-IN.
 - PLUMBING FIXTURES TO BE REPLACED WITH NEW PER SCHEDULE. EXISTING FIXTURES TO BE REMOVED FOR ROOM REFINISH AND NEW FIXTURES INSTALLED IN SAME LOCATIONS AFTER WORK IS COMPLETE.

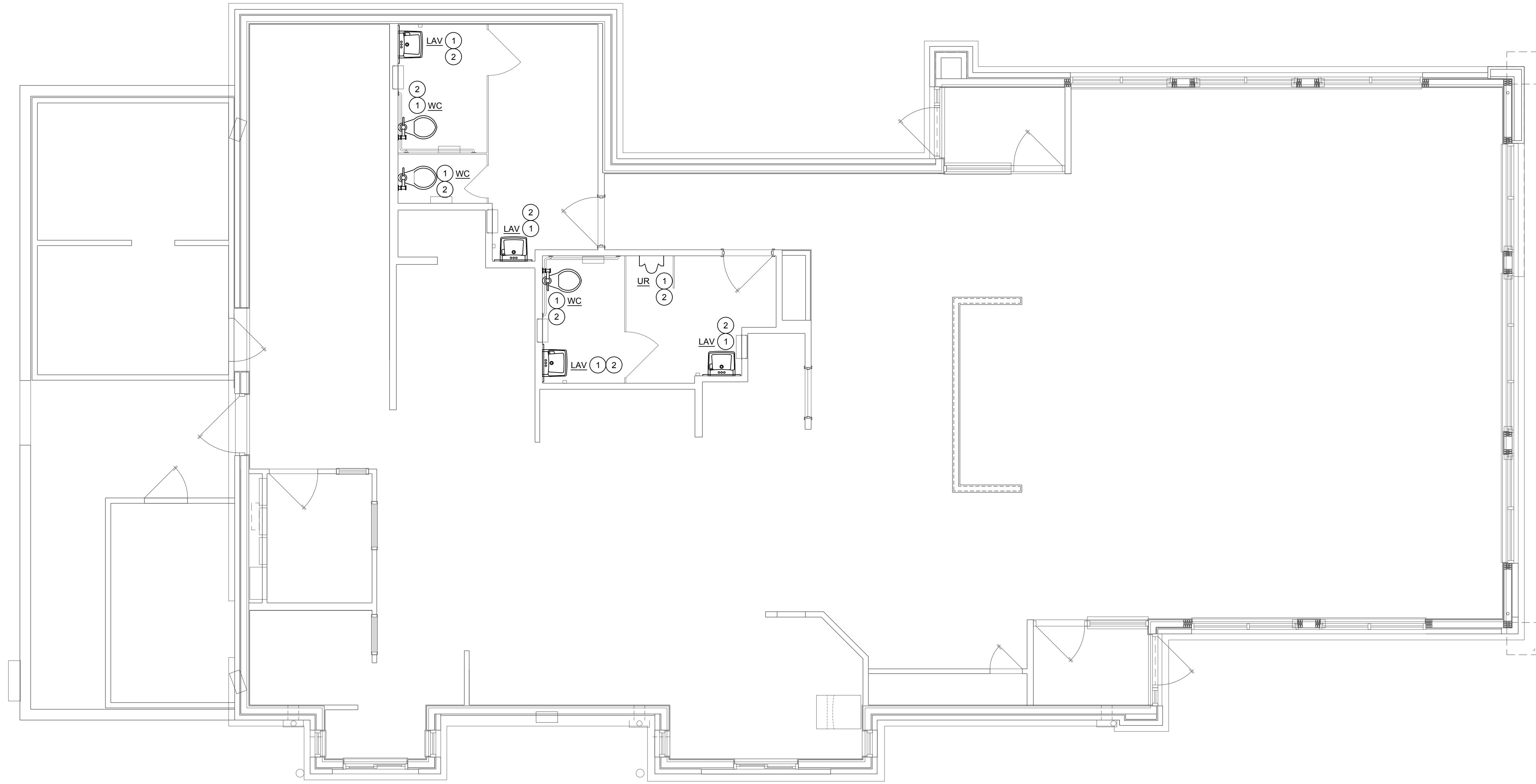
PLUMBING SYMBOLS LEGEND	
LINETYPES:	PIPE SYMBOLS:
--- COLD WATER (CW)	--- PIPE TURNING UP/DN
--- HOT WATER (HW) 140°, 120°	--- TEE TURNING UP/DN
--- SANITARY WASTE (SAN)	--- SHUTOFF VALVE
--- GREASE WASTE (GW)	--- CHECK VALVE
--- PLUMBING VENT (V)	--- BALANCING VALVE
	--- END CAP
	--- CONNECT TO EXISTING

NOT ALL SYMBOLS OR LINETYPES ARE NECESSARILY USED

- GENERAL NOTES
- PLUMBING CONTRACTOR SHALL MAKE ALL CONNECTIONS TO KITCHEN EQUIPMENT AND MECHANICAL EQUIPMENT UNLESS OTHERWISE NOTED.

ATTENTION ALL BIDDERS

REFER TO WENDY'S CONSOLIDATOR LIST TO OBTAIN BUILDING MATERIAL QUOTES. REFER TO WENDY'S APPROVED SUPPLIER LIST FOR PHONE NUMBERS AND CONTACTS.



1 PLUMBING PLAN
SCALE: 1/4" = 1'-0"

SITE NUMBER:	07705
BUILDING TYPE:	CG3480
ASSET TYPE:	FREESTANDING
CLASSIFICATION:	REFRESH
OWNER:	STARBOARD
BASE VERSION:	2021 SPRING
UPGRADE CLASSIFICATION:	N/A
PROJECT YEAR:	2022
DESIGN TYPE:	(2.0) UM BRIGHT
DRAWING RELEASE:	2021 SPRING

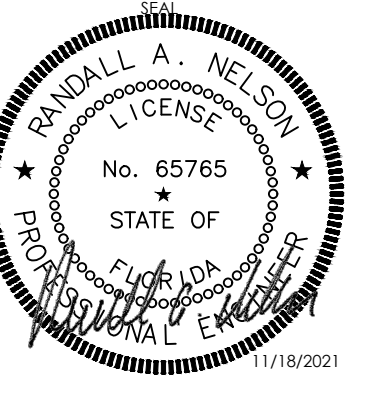


STARBOARD GROUP
12540 W. ATLANTIC BLVD.
CORAL SPRINGS, FL 33071
OFFICE: (954)255-2266

Wendy's.
#007705 (STARBOARD #511)
1615 WEST KENNEDY BLVD.,
TAMPA, FL

REV.	DATE	DESCRIPTION

ISSUE DATE: 11/18/2021
PROJECT NUMBER: 2120429
DRAWN BY: MS.BS
CHECKED BY: AR.CF



SHEET NAME
PLUMBING PLAN

SHEET NUMBER
P1.1

11/18/2021, 11:30 AM, G:\Wendy's - Lines\2120429 Wendy's - Tampa, FL (Wendy's)\Sheets\P1.1 - PLUMBING PLAN.dwg, bursas@wendy.com