

| SYMBOL LEGEND | | ARTPACK & WAYFINDING LEGEND | |
|---------------|-----------------------------|-----------------------------|--|
| SYMBOL | DESCRIPTION | MARK | DESCRIPTION |
| (X###) | EQUIPMENT TAGS | AP-23 | WENDY'S LOCAL LOVE (CUSTOM STATE AND STAR LOCATOR) |
| (###) | EQUIPMENT TAGS | AP-24 | WINK WALL FRAMED GRAPHIC |
| (XX-#) | ARTPACK AND WAYFINDING TAGS | AP-25 | INTERIOR READER BOARD |
| | | AP-26 | CAUSE PAINTING AND PLAQUE (3 VERSIONS) |
| | | AP-30 | WELCOME WALL ART |
| | | (NP-S) | NUTRITION POSTER |
| | | (WF-20) | TACTILE EXIT SIGN |
| | | (WF-21) | HAND WASHING SIGN |
| | | (WF-22) | FAMILY RESTROOM SIGN |
| | | (WF-22A) | FAMILY RESTROOM SIGN ACCESSIBLE |
| | | (WF-23) | MEN'S ROOM SIGN |
| | | (WF-23A) | MEN'S ROOM SIGN ACCESSIBLE |
| | | (WF-25) | WOMEN'S ROOM SIGN |
| | | (WF-25A) | WOMEN'S ROOM SIGN ACCESSIBLE |
| | | (WF-27) | WOMEN'S ROOM SIGN |
| | | (WF-27A) | WOMEN'S ROOM SIGN ACCESSIBLE |
| | | (WF-31) | EMPLOYEE ONLY |
| | | (WF-32) | NOT AN ENTRANCE |
| | | | REFER TO RESPONSIBILITY SCHEDULE FOR ARTPACK INFORMATION |

GENERAL NOTES

- GC SHALL COORDINATE REQUIREMENTS OF MILLWORK, SPECIALTIES, EQUIPMENT, AND FURNISHINGS WITH OWNER PRIOR TO START OF WORK.
- ELECTRICAL & PLUMBING REQUIREMENTS FOR THE INSTALLATION OF MILLWORK, SPECIALTIES, EQUIPMENT, AND FURNISHINGS IS THE RESPONSIBILITY OF THE GC.
- EQUIPMENT LISTED IS TO BE FURNISHED BY THE KITCHEN EQUIPMENT DISTRIBUTOR UNLESS NOTED OTHERWISE.
- KITCHEN EQUIPMENT DISTRIBUTOR PROVIDES LABOR FOR UNCRATING, ASSEMBLY AND SETTING OF EQUIPMENT.
- KITCHEN EQUIPMENT DISTRIBUTOR WILL SUPPLY CRITICAL DIMENSIONS, PLUMBING AND ELECTRICAL SPECIFICATIONS FOR EQUIPMENT SUPPLIED BY THE KITCHEN EQUIPMENT SUPPLIER.
- ELECTRICAL AND PLUMBING CONTRACTOR TO MAKE FINAL CONNECTION TO EQUIPMENT.
- SEE INTERIOR ELEVATIONS FOR ARTPACK GRAPHIC LOCATIONS.
- SIGNAGE TO BE SITEMITTED UNDER SEPARATE PERMIT.
- THE GENERAL CONTRACTOR SHALL PROVIDE A CONTINGENCY BID FOR WORK IN THE BACK OF HOUSE/KITCHEN AREA BEYOND THE SCOPE OF THIS REMODEL SHOWN ON THESE DOCUMENTS. COORDINATE ANY/ALL WORK BID, PROPOSED, OR REQUIRED WITH THE OWNER'S CONSTRUCTION REPRESENTATIVE PRIOR TO PURCHASING OR BEGINNING ANY WORK BEYOND THE LIMITED SCOPE SHOWN ON THESE CONSTRUCTION DOCUMENTS.
- THE CONTRACTOR SHALL PROVIDE AND INSTALL SOLID WOOD BLOCKING FOR ALL WALL MOUNTED ITEMS, SIGNAGE, EQUIPMENT, MILLWORK, ETC.. COORDINATE LOCATIONS WITH OWNER'S CONSTRUCTION REPRESENTATIVE AS NECESSARY.
- EXISTING EQUIPMENT TO REMAIN UNLESS NOTED OTHERWISE.

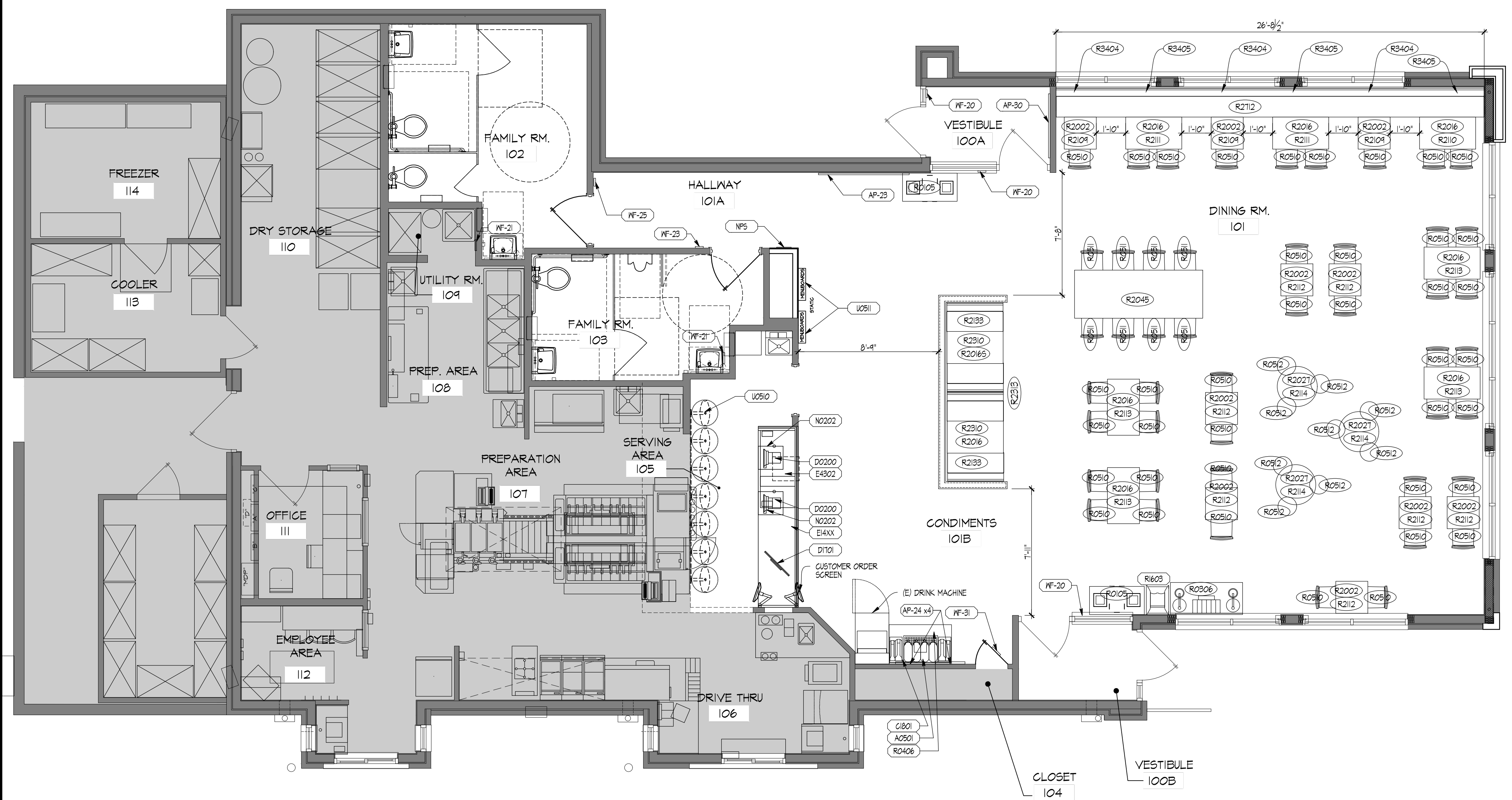
ATTENTION ALL BIDDERS
 REFER TO WENDY'S APPROVED CONSOLIDATOR - HJC TO OBTAIN PREFERRED BUILDING MATERIAL PRICING. NATIONAL ACCOUNT CONTACTS AND PHONE NUMBERS PROVIDED FOR REFERENCE.

SITE NUMBER: 07705
 BUILDING TYPE: CG3480
 ASSET TYPE: FREESTANDING
 CLASSIFICATION: REFRESH
 OWNER: STARBOARD
 BASE VERSION: 2021 SPRING
 UPGRADE CLASSIFICATION: N/A
 PROJECT YEAR: 2022
 DESIGN TYPE: (2.0) UM BRIGHT
 DRAWING RELEASE: 2021 SPRING

Linear Architecture LLC
 Philip Kemery,
 Architect
 4436 Harvest Hill Rd.
 Dallas, TX 75244
 PHONE: 972.929.9226



STARBOARD GROUP
 12540 W. ATLANTIC BLVD.
 CORAL SPRINGS, FL 33071
 OFFICE: (954)255-2266



| MARK | QTY. | DESCRIPTION OF EQUIPMENT | REMARKS | FURNISHED BY | INSTALLED BY |
|--------|------|--|---|--------------|--------------|
| A0105 | | BEVERAGE SYSTEM, PUW - FREESTYLE | | KED | KED |
| A0202 | | BEVERAGE SYSTEM SELF-SERVE DINING ROOM (FREESTYLE) | EXTERIOR COLOR: SILVER (FOR FREESTYLE) | 0 | 0 |
| A0501 | | ICED TEA DISPENSER-NARROW OVAL | | KED | KED |
| A0502 | | ICED TEA DISPENSER-ROUNDED FRONT (3 GALLON) | | KED | KED |
| C0401 | | NAPKIN DISPENSER | | KED | KED |
| C1502 | | KETCHUP PUMP | | KED | KED |
| C1801 | | LID/STRAW DISPENSER | | KED | KED |
| D0200 | | POS TERMINAL | | 0 | 0 |
| D1701 | | COPS SCREEN | | | |
| D1702 | | RUNNER SCREEN | | | |
| D1703 | | CEILING MOUNTED PREMIUM BEVERAGE DISPLAY | | | |
| D3002 | | KIOSK (UM) | | 0 | 0 |
| E14XX | | FRONT COUNTER | | KED | KED |
| E4302 | | BAKERY CASE | | KED | KED |
| G1402 | | CHASE @ FREESTYLE | | KED | KED |
| N0202 | | CASH DROP BOX | | KED | KED |
| OP0222 | | ICE MACHINE - DINING ROOM W/ REMOTE CONDENSING UNIT - DINING ROOM (ROOF) | # KITCHEN EQUIPMENT SUPPLIER TO VERIFY ACTUAL EQUIPMENT / MODEL / FINISH TO BE USED *QUANTITY WILL VARY DEPENDING ON EXACT BEVERAGE SYSTEM CONFIGURATION | KED | KED |
| R0105 | | TRASH RECEPTACLE (2 BIN ENCLOSURE) | | KED | KED |
| R0106 | | TRASH RECEPTACLE (3-STREAM - CANADA) | | KED | KED |
| R0302 | | CONDIMENT STAND (w/ DRAIN) | | KED | KED |
| R0510 | | CHAIR - STANDARD HEIGHT | | KED | KED |
| R0511 | | CHAIR - BAR HEIGHT | | KED | KED |
| R0512 | | STOOL 24" HIGH | | KED | KED |
| R1603 | | HIGH CHAIRS | | KED | KED |
| R1705 | | BOOSTER CHAIR | | KED | KED |
| R2002 | | TABLE TOP: 24" X 24" | | KED | KED |
| R2016 | | TABLE TOP: 24" X 42" | | KED | KED |
| R2016S | | TABLE TOP: 24" X 42" - STENCIL | | KED | KED |
| R2027 | | TABLE TOP: 30" DIAMETER | | KED | KED |
| R2043 | | FAMILY TABLE TOP: 30" X 66" (6 SEAT) | | KED | KED |
| R2044 | | FAMILY TABLE TOP: 24" X 66" (6 SEAT) | | KED | KED |
| R2045 | | COMMUNITY W-TABLE (FREESTANDING; 8 SEAT; 96" LONG) | | KED | KED |
| R2046 | | COMMUNITY W-TABLE (CANTILEVERED; 8 SEAT; 96" LONG) | | KED | KED |
| R2047 | | COMMUNITY W-TABLE (FREESTANDING; 10 SEAT; 120" LONG) | | KED | KED |
| R2048 | | COMMUNITY W-TABLE (CANTILEVERED; 10 SEAT; 120" LONG) | | KED | KED |
| R2109 | | TABLE BASE: 2-TOP - FIXED | | KED | KED |
| R2110 | | TABLE BASE: 4-TOP - FIXED | | KED | KED |
| R2111 | | TABLE BASE: 4-TOP ACCESSIBLE - FIXED | | KED | KED |
| R2112 | | TABLE BASE: 22" X-BASE - FREE STANDING | | KED | KED |
| R2113 | | TABLE BASE: 22" T-BASE (ACCESSIBLE) - FREE STANDING | 2 BASES REQUIRED PER TABLE | KED | KED |
| R2114 | | TABLE BASE: 22" X-BASE (COUNTER HGT 34" - FREE STANDING) | | KED | KED |
| R2133 | | CANTILEVER TABLE BRACKET (4-TOP) | | KED | KED |
| R2310 | | 42" SINGLE BOOTH - STANDARD (WOOD) | | KED | KED |
| R2313 | | 42" DOUBLE BOOTH - STANDARD (WOOD) | | KED | KED |
| R2439 | | LOW WALL AT "W TABLE" | | KED | KED |
| R2440 | | U WALL AT BOOTHS | | KED | KED |
| R2702 | | BENCH 15'-10" | | KED | KED |
| R2712 | | BENCH 26'-4" | | KED | KED |
| R2713 | | BENCH 24'-6" | | KED | KED |
| R3310 | | KIOSK LEDGE (UM; 3 STATIONS) - 89" | | 0 | 0 |
| R3404 | | SEAT CUSHION 24" WIDE | | 0 | 0 |
| R3405 | | SEAT CUSHION 42" WIDE | | 0 | 0 |
| U0510 | | BACKLIT STATIC MENU BOARDS | OWNER TO VERIFY ACTUAL EQUIPMENT/MODEL TO BE USED | 0 | 0 |
| U0511 | | BACKLIT STATIC REVIEW BOARDS | OWNER TO VERIFY ACTUAL EQUIPMENT/MODEL TO BE USED | 0 | 0 |

Wendy's
 #07705 (STARBOARD #511)
 1615 WEST KENNEDY BLVD.
 TAMPA, FL 33606

REV. DATE DESCRIPTION
 ISSUE DATE: 12/29/2021
 PROJECT NUMBER: 21-122
 DRAWN BY: XXX
 CHECKED BY: XXX



SHEET NAME
FLOOR & EQUIPMENT PLAN

SHEET NUMBER
EQ1.1

01 EQUIPMENT PLAN
 SCALE: 1/4" = 1'-0"

12/30/2021, 2:28 PM, C:\Users\moffatt\OneDrive - Philip W. Kemery\OneDrive\Documents\03_EQ1 - EQUIPMENT PLAN.dwg, moffatt