

**PAINT SCHEDULE**

EXTERIOR				06/10/2021
COLOR	SHERWIN WILLIAMS	PPG	BENJAMIN MOORE	
PEX-1	WENDY'S DARK BRONZE	BRONZETONE CUSTOM COLORS: "MISSISSIPPI BRONZE"	PPG 1002-7 "PHANTOM MIST"	"BRONZETONE"
PEX-2	RED	SW 6321 "RED BAY"	PPG 13-16 "BLAZE"	HC 181 "HERITAGE RED"
PEX-3	PRE-FINISHED- DARK BRONZE	SIGN CABINETS - MATCHES PEX-1 NO SUBSTITUTIONS AVAILABLE (THROUGH SIGN VENDOR ONLY)	SIGN CABINETS - MATCHES PEX-1 NO SUBSTITUTIONS AVAILABLE (THROUGH SIGN VENDOR ONLY)	SIGN CABINETS - MATCHES PEX-1 NO SUBSTITUTIONS AVAILABLE (THROUGH SIGN VENDOR ONLY)
PEX-4	LIGHT GRAY	SW 7022 "ALPACA"	PPG 1025-3 "WHISKERS"	OC-28 "COLLINGWOOD"
PEX-5	SAFETY YELLOW	"SAFETY YELLOW"	"SAFETY YELLOW"	"SAFETY YELLOW"
PEX-6	PRE-FINISHED- DARK BRONZE	WALK-IN COOLER / FREEZER - MATCHES PEX-1 PRE-FINISHED BY MANUFACTURER, NO SUBSTITUTIONS	WALK-IN COOLER / FREEZER - MATCHES PEX-1 PRE-FINISHED BY MANUFACTURER, NO SUBSTITUTIONS	WALK-IN COOLER / FREEZER - MATCHES PEX-1 PRE-FINISHED BY MANUFACTURER, NO SUBSTITUTIONS
PEX-7	WENDY'S FIELD BROWN	SW 6061 "TANBAR"	PPG 160-07 "SOUTHERN WOOD"	1223 "BRENTWOOD"
PEX-8	WENDY'S ACCENT BROWN	SW 6068 "BREVITY BROWN"	PPG 16-23 "TAMPICO BROWN"	1224 "COTYOTE TRAIL"
PEX-9	SILVER - SATIN	"SILVER BRIGHT" ALUMINUM PAINT	PPG 6-230 "BRIGHT ALUMINUM"	P22 78 "SILVER URETHANE ALKID"
PEX-10	POWDER COAT "BLACK"	SW 6258 "TRICORN BLACK"	PPG 1001-7 "BLACK MAGIC"	HC-19 "BLACK"
PEX-11	TAN	SW 6109 "HOPSACK"	PPG 1085-5 "SAUTEED MUSHROOM"	1055 "ALCONQUIN TRAIL"
PEX-12	DARK GRAY	SW 7674 "PEPPERCORN"	PPG 1001-6 "KNIGHTS ARMOUR"	2121-10 "GRAY"
PEX-13	LIGHT TAN (ACCENT FOR PEX-11)	SW 6106 "KILIM BEIGE"	PPG 14-17 "ARMADILLO"	BM 1128 "ARMADILLO"

EXTERIOR PRIMER				
BASE	SHEEN	SHERWIN WILLIAMS	PPG	BENJAMIN MOORE
STUCCO / EPS	SATIN	PRIME: LOXON CONCRETE & MASONRY PRIMER FINISH: A-100 EXTERIOR LATEX SATIN	PRIME: PPG SEAL GRIP 17-921X1 ACRYLIC UNIVERSAL PRIMER FINISH: PPG SPEED HIDE 6-2045X1 EXTERIOR SATIN ACRYLIC	PRIME: 023 FRESH START ALL PURPOSE PRIMER FINISH: 631 AURA WATERBORNE EXTERIOR SATIN FINISH
METAL RAILING	SEMI-GLOSS	PRIME: PROCRYL UNIVERSAL METAL FINISH: SHER-CRYL HPA (SEMI-GLOSS)	PRIME: PPG PITT-TECH PLUS 4020PF DTM ACRYLIC METAL PRIMER FINISH: SPPEDHIDE EXTERIOR 6-900X1 100% ACRYLIC LATEX SEMI-GLOSS	PRIME: HP04 METAL PRIMER OR SELF PRIME HP29 METAL PRIMER FINISH: HP29 DTM ACRYLIC SEMI-GLOSS ENAMEL
WOOD	SATIN	PRIME: A100 ALKYD EXTERIOR WOOD PRIMER FINISH: A-100 EXTERIOR LATEX SATIN	PRIME: PPG SEAL GRIP 17-921X1 ACRYLIC UNIVERSAL PRIMER FINISH: PPG SPEED HIDE 6-2045X1 EXTERIOR SATIN ACRYLIC	PRIME: 023 FRESH START ALL PURPOSE PRIMER FINISH: 631 AURA WATERBORNE EXTERIOR SATIN FINISH
PLASTIC (HERITAGE II)	SATIN	PRIME: EXTREME BOND PRIMER FINISH: SHER-CRYL HPA (SEMI-GLOSS)	PRIME: PPG SEAL GRIP 17-921X1 ACRYLIC UNIVERSAL PRIMER FINISH: PPG SPEED HIDE 6-2045X1 EXTERIOR SATIN ACRYLIC	PRIME: 023 FRESH START ALL PURPOSE PRIMER FINISH: 631 AURA WATERBORNE EXTERIOR SATIN FINISH
WROUGHT IRON	GLOSS	PRIME: PROCRYL UNIVERSAL METAL FINISH: SHER-CRYL HPA (GLOSS)	PRIME: PPG PITT-TECH PLUS 4020PF ACRYLIC METAL PRIMER FINISH: PPG PITT-TECH PLUS 90-1306 SAFETY YELLOW DTM GLOSS	PRIME: 023 FRESH START ALL PURPOSE PRIMER FINISH: 631 AURA WATERBORNE EXTERIOR SATIN FINISH
ALUMINUM / METAL STOREFRONT PRIMER				
ALUMINUM STOREFRONT	GLOSS	RECOMMENDED TO USE PPG PRIME: PROCRYL UNIVERSAL METAL PRIMER FINISH: SHER-CRYL HPA (SEMI-GLOSS OR GLOSS)	COLOR: PPG "STATUARY BROWN" RECOMMENDED PRIME: PPG PITT-TECH PLUS 4020 PF ACRYLIC METAL PRIMER RECOMMENDED FINISH: PPG PITT-TECH PLUS 4216HD SEMI-GLOSS DTM ACRYLIC	HP04 ACRYLIC METAL PRIMER ALTERNATE PRIME: V175 WATERBORNE BONDING PRIMER ALTERNATE FINISH: P22-64 BRONZETONE URETHANE GLOSS ENAMEL
METAL	SATIN	RECOMMENDED TO USE PPG PRIME: PROCRYL UNIVERSAL METAL PRIMER FINISH: SHER-CRYL HPA (SEMI-GLOSS)	RECOMMENDED PRIME: PPG PITT-TECH PLUS 4020 PF ACRYLIC METAL PRIMER RECOMMENDED FINISH: PPG PITT-TECH PLUS 4216HD SEMI-GLOSS DTM ACRYLIC	HP04 ACRYLIC METAL PRIMER ALTERNATE PRIME: SELF PRIME WITH P23-60 DTM ALKYD LOW LUSTER ENAMEL
PEX-9 PRIMER				
METAL	SATIN	PRIME: PROCRYL UNIVERSAL METAL PRIMER FINISH: SILVER-BRITE ALUMINUM PAINT (2 COATS) #855911	PRIME: PPG PITT-TECH PLUS 4020PF ACRYLIC METAL PRIMER FINISH: PPG PITT-TECH 90-474 DTM SATIN ACRYLIC ENAMEL	PRIME: HP04 ALKYD METAL PRIMER FINISH: HP25 DTM ACRYLIC LOW LUSTER ENAMEL
WOOD	SATIN	PRIME: A100 ALKYD WOOD PRIMER FINISH: SILVER-BRITE ALUMINUM PAINT (2 COATS) #855911	PRIME: PPG SEAL GRIP 17-921X1 ACRYLIC UNIVERSAL PRIMER FINISH: PPG SPEEDHIDE 6-2045X1 EXTERIOR SATIN ACRYLIC	PRIME: 023 FRESH START ALL PURPOSE PRIMER FINISH: 631 AURA WATERBORNE EXTERIOR SATIN FINISH

INTERIOR				
COLOR	SHERWIN WILLIAMS	PPG	BENJAMIN MOORE	
P-1	BEIGE - EGGSHELL	SW7036 "ACCESSIBLE BEIGE"	PPG 1024-4 "MOTH GRAY"	OC-15 "BABY FAWN"
P-2	RED - EGGSHELL	SW 6321 "RED BAY"	PPG 13-16 "BLAZE"	CP5-1195 "FLAMENCO"
P-3	CEILING WHITE - FLAT	SW 7006 "EXTRA WHITE"	PPG 1001-1 "DELICATE WHITE"	PM-1 "SUPER WHITE"
P-4	TAUPE - EGGSHELL	SW 7039 "VIRTUAL TAUPE"	PPG 1024-6 "PATCHES"	999 "RUSTIC TAUPE"
P-5	LIGHT GRAY - EGGSHELL	SW 7065 "ARGOS"	PPG 1009-4 "GRAY STONE"	2134-50 "GULL WING GRAY"
P-6	WHITE - EGGSHELL	SW 8917 "SHELL WHITE"	PPG 18-09 "GARLIC CLOVE"	OC-17 "WHITE DOVE"
P-7	GRAY - EGGSHELL	SW 7067 "CITY SCAPE"	PPG 1009-5 "PHOENIX FOSSIL"	OC-17 "WHITE DOVE"
P-8	WOOD STAIN	SW MINWAX PERFORMANCE SERIES WATER BASED POLYURETHANE	DPT259 SATIN- DEFT INTERIOR POLYURETHANE WATER BASED	N423 STAYS CLEAR ACRYLIC POLYURETHANE LOW LUSTER
P-9	DARK GRAY - FLAT	SW 7674 "PEPPERCORN"	PPG 1001-6 "KNIGHTS ARMOUR"	2121-10 "GRAY"
P-10	BLUE - EGGSHELL	SHERWIN WILLIAMS: SW 9138 "STARDEW"	PPG 1037-3 "SPECIAL DELIVERY"	AF-545 "SOUTUDE"
INTERIOR PRIMER				
BASE	SHEEN	SHERWIN WILLIAMS	PPG	BENJAMIN MOORE
GYPSUM BOARD	EGGSHELL	PRIME: PROMAR 200 ZERO VOC PRIMER FINISH: PROMAR 200 ZERO EGGSHELL	PRIME: PPG SPEEDHIDE 6-2 INTERIOR OD ACRYLIC PRIMER FINISH: PPG SPEEDHIDE 6-411 INTERIOR EGGSHELL	PRIME: 023 FRESH START ALL PURPOSE PRIMER FINISH: 485 ULTRA SPEC SCUFF-X EGGSHELL
METAL DECK	FLAT	PRIME: SELF PRIMING, RUST INHIBITIVE PRO INDUSTRIAL DTM ACRYLIC	PRIME: SELF PRIMING, RUST INHIBITIVE, PPG PITT-TECH 90-472 DTM SATIN FINISH	PRIME: SELF PRIMING, RUST INHIBITIVE, HP 25 DTM LOW LUSTER SATIN FINISH
WOOD DECK	FLAT	PRIME: 1 COAT SW PREMIUM WALL & WOOD PRIMER FINISH: 2 COATS SW PROMAR 200 ZERO VOC FLAT	PRIME: PPG SEAL GRIP PRIMER AS BASE COAT, TINT PRIMER TO "KNIGHTS ARMOUR" FINISH: PPG SPEEDHIDE ZERO VOC FLAT	PRIME: 023 FRESH START ALL PURPOSE
BATHROOM & KITCHEN GYPSUM BOARD	SEMI-GLOSS	PRIME: PROMAR 200 VOC PRIMER FINISH: PROMAR 200 VOC SEMI-GLOSS	PRIME: PPG SPEEDHIDE 6-2 INTERIOR OD ACRYLIC PRIMER FINISH: PPG SPEEDHIDE 6-500 INTERIOR SEMI-GLOSS	PRIME: 023 FRESH START ALL PURPOSE PRIMER FINISH: 487 ULTRA SPEC SCUFF-X SEMI GLOSS

**JOINT TREATMENT SCHEDULE**

(SEE SPECIFICATIONS - DIVISION 7 FOR CLARIFICATION OF TYPES)

EXT: "E" INT: "I"	CONDITION	TYPE
E	PERIMETER JOINTS OF DOOR FRAMES, WINDOW FRAMES, STOREFRONT, AND/OR WINDOW WALL FRAME ASSEMBLIES, LOUVERS, FIXTURES, AND OTHER PENETRATIONS IN THE BUILDING ENCLOSURES NOT OTHERWISE SEALED WATERTIGHT, U.N.O. PROVIDE CONTINUOUS SEALANT UNDER EXTERIOR DOOR THRESHOLDS AND WINDOW SYSTEMS THAT REST DIRECTLY ON THE FLOOR SLAB	JS-1
E	MASONRY / CONCRETE CONTROL JOINTS IN WALLS	JS-1
E	E.I.F.S. JOINTS IN WALLS	JS-1
E	EXPANSION JOINTS IN AND AROUND CONCRETE PAVEMENT, UNIT PAVEMENT, CURBS, OR OTHER HORIZONTAL SURFACES	JS-3
E	PERIMETER JOINTS AND OTHER OPEN JOINTS AT EXTERIOR SOFFITS	JS-1
E	INTERSECTION OF DISSIMILAR MATERIALS THAT ALLOW AIR OR WATER INFILTRATION	JS-1
E	INTERSECTION OF DISSIMILAR MATERIALS IN WHICH INSTALLATION IS NOT UNIFORM OR WHERE WORKMANSHIP DOES NOT MEET ACCEPTABLE CONSTRUCTION TOLERANCES, BUT SUCH WORKMANSHIP IS ACCEPTED BY THE ARCHITECT	JS-1
I	PERIMETER JOINTS ON INTERIOR SIDE OF DOOR FRAMES, WINDOW FRAMES, AND OTHER FRAMED MATERIALS IN WALLS WITH NO FINISHED EDGE FLANGE	JS-2
I	OPEN JOINTS AT PENETRATIONS THROUGH WALLS, CONCRETE, PLASTER, OR GYPSUM BOARD CEILINGS WHERE INTENDED TO BE TIGHT SEALED JOINTS	JS-2
I	OPEN JOINT BETWEEN DISSIMILAR MATERIALS WHERE INTENDED TO BE TIGHT SEALED JOINTS	JS-2
I	JOINTS WHERE EDGE TRIM OF GYPSUM BOARD ABUTS IRREGULAR SURFACES OR OTHER SURFACES AND LEAVES OPEN JOINTS	JS-2
I	EXPOSED JOINTS AT JUNCTURES OF COUNTERTOPS, CABINETS, OR OTHER "BUILT-IN" WORK WITH IRREGULAR SURFACES INTENDED TO BE TIGHT SEALED JOINT	JS-2
I	EXPOSED JOINTS AT JUNCTURES OF WALL MOUNTED PLUMBING FIXTURES AND/OR TOILET ACCESSORIES WITH IRREGULAR SURFACES AND INTENDED TO BE TIGHT SEALED JOINT	JS-5
I	CONTROL JOINTS SAWN JOINTS AND OPEN JOINTS IN AND AROUND CONCRETE SLABS AND CURBS	JS-4

**JOINT TREATMENT NOTES**

A. THE JOINT TREATMENT SCHEDULE IS INTENDED TO ILLUSTRATE ALL JOINT CONDITIONS WHICH ARE MEANT TO BE SEALED WHETHER REFERENCED FROM OTHER DETAILS OR NOT.

B. AT METAL FRAME LOCATIONS (DOORS, WINDOWS, ETC.) HOLD FRAME BACK FROM SUBSTRATE 3/8" @ HEAD & SILL AND 3/16" @ JAMB TO ALLOW FOR SEALANT, TYPICAL U.N.O. THIS INCLUDES DIMENSIONS FOR STEEL LINTELS WHERE APPLICABLE.

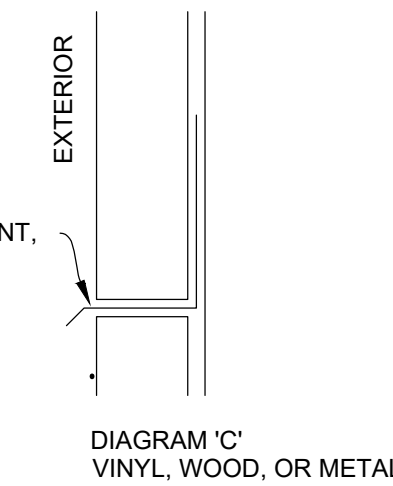
C. PROVIDE PROPER SEALERS AS REQUIRED TO FULLY CLOSE JOINTS THAT ARE INTENDED TO BE TIGHT AND AS SHOWN ON THE DRAWINGS.

D. PROVIDE CLOSED CELL BACKER ROD AS REQUIRED TO ACHIEVE PROPER SEALANT THICKNESS PER MANUFACTURER'S INSTALLATION INSTRUCTIONS.

E. CAUTION, DO NOT SEAL WEEPS AND DRAINAGE CHANNELS IN STOREFRONT OR OTHER ASSEMBLIES.

**GENERAL FLASHING REQUIREMENTS**

- PROPERLY WEEP FLASHING POINTS AND NORMAL DRAINAGE POINTS WITH WEEPS @ 1'-4" O.C. MAX. SPACING. WEEP POINTS ARE TO BE LOCATED DIRECTLY ON TOP OF FLASHING.
- WHERE FLASHING IS LOCATED TERMINATE AND/OR SEPARATES MATERIALS, DO NOT SEAL (U.N.O.) - REFER TO DIAGRAM "C" WHERE IT IS DETERMINED BY THE MATERIAL MANUFACTURER OR OTHER MEANS THAT SEALING IS REQUIRED (TO PREVENT WATER PENETRATION BEYOND FLASHING DUE TO WIND DRIVEN RAIN), THEN SEALANT MUST BE WEEPED IN ACCORDANCE WITH NOTE "A" ABOVE.
- UNLESS NOTED OTHERWISE, TURN FLASHING UP A MIN. OF 4" BEHIND APPROPRIATE MATERIALS.
- FLASHING CONDITIONS, WHETHER DETAILED OR NOT, ARE TO BE IN ACCORDANCE WITH S.M.A.C.N.A. SPECIFICATIONS, WHERE ATYPICAL CONDITIONS OCCUR THAT ARE NOT DETAILED, FLASHING IS TO BE INSTALLED AS CLOSELY AS POSSIBLE TO THE S.M.A.C.M.A. DETAIL THAT IS MOST CLOSELY APPROXIMATES THE ACTUAL CONDITION.
- UNLESS NOTED OTHERWISE, AT FLASHING HIGH POINTS SEAL WATER TIGHT TO BACK-UP SUBSTRATE.



**BLDG. INSULATION SCHED.**

DESCRIPTION	THICKNESS (TOTAL R-VALUE)	LOCATION
RIGID PERIMETER FOUNDATION INSULATION (EXTRUDED POLYSTYRENE)	R-10	PERIMETER FOUNDATION TO FROST LINE DEPTH
BATT INSULATION	5 1/2" (R-20)	EXTERIOR WALL CAVITY
FIBERGLASS BATT INSULATION (FOIL FACE FSK-25)	5 1/2" (R-20)	EXTERIOR WALL CAVITY AT EXPOSED AREAS ABOVE CEILING
RIGID ROOF INSULATION (POLYISOCYANURATE)	(R=30@)	ABOVE ROOF DECK, TAPERED TO DRAIN
SOUND ATTENUATION BATT INSULATION	3 1/2" U.N.O.	INTERIOR WALL CAVITIES - SEE PARTIAL FINISH TYPES

**BUILDING INSULATION GENERAL NOTES**

- INSULATION LOCATIONS SHOWN IN SCHEDULE ARE INTENDED ONLY FOR CLARIFICATION PURPOSES AND ARE NOT INTENDED TO BE ALL-ENCOMPASSING. PROVIDE EACH INSULATION TYPE AS REQUIRED TO FULLY MAINTAIN THE THERMAL INTEGRITY OF THE CONSTRUCTION ASSEMBLIES RELATED TO THE ENTIRE BUILDING ENVELOPE.

**EXTERIOR FURNITURE SCHEDULE**

SYMBOL	DESCRIPTION	PRODUCT INFO	8/21/2020
	PATIO TABLE AND CHAIRS	PRODUCT: EMU DESIGNER: CENTRO RIVERCHIE EMU TABLES: WENDY'S 30" SQ WITH UMBRELLA HOLE #EW9038-22 (4 TOP) OR WENDY'S 30" X 28" (4 TOP) #W820-22. FINISH: ALKID W/ COATED POLYURETHANE FINISH CHAIRS: WENDY'S KHALI LIDSE CHAIR #E138-27, WENDY'S KHALI ARMCHAIR #E339-27. FINISH: ALKID W/ COATED POLYURETHANE FINISH NOTE: MINIMUM OF 4 TABLE MUST BE ADA ACCESSIBLE	
	PATIO TABLE AND CHAIRS	PRODUCT: RECYCLE DESIGN: INFINITY SERIES FRAME: POWDER COAT GRAY SLATS: CEDAR HOPE TABLE #1: W INF P1838 (4 SEAT) TABLE #2: W INF P1414 (4 SEAT) TABLE #3: W INF P1414 (4 SEAT) TABLE #4: W INF P1800 (4 SEAT) TABLE #5: W INF P1800 (4 SEAT) TABLE #6: W INF P1800 (4 SEAT) TABLE #7: W INF P1800 (4 SEAT) TABLE #8: W INF P1800 (4 SEAT) TABLE #9: W INF P1800 (4 SEAT) TABLE #10: W INF P1800 (4 SEAT) TABLE #11: W INF P1800 (4 SEAT) TABLE #12: W INF P1800 (4 SEAT) TABLE #13: W INF P1800 (4 SEAT) TABLE #14: W INF P1800 (4 SEAT) TABLE #15: W INF P1800 (4 SEAT) TABLE #16: W INF P1800 (4 SEAT) TABLE #17: W INF P1800 (4 SEAT) TABLE #18: W INF P1800 (4 SEAT) TABLE #19: W INF P1800 (4 SEAT) TABLE #20: W INF P1800 (4 SEAT) TABLE #21: W INF P1800 (4 SEAT) TABLE #22: W INF P1800 (4 SEAT) TABLE #23: W INF P1800 (4 SEAT) TABLE #24: W INF P1800 (4 SEAT) TABLE #25: W INF P1800 (4 SEAT) TABLE #26: W INF P1800 (4 SEAT) TABLE #27: W INF P1800 (4 SEAT) TABLE #28: W INF P1800 (4 SEAT) TABLE #29: W INF P1800 (4 SEAT) TABLE #30: W INF P1800 (4 SEAT) TABLE #31: W INF P1800 (4 SEAT) TABLE #32: W INF P1800 (4 SEAT) TABLE #33: W INF P1800 (4 SEAT) TABLE #34: W INF P1800 (4 SEAT) TABLE #35: W INF P1800 (4 SEAT) TABLE #36: W INF P1800 (4 SEAT) TABLE #37: W INF P1800 (4 SEAT) TABLE #38: W INF P1800 (4 SEAT) TABLE #39: W INF P1800 (4 SEAT) TABLE #40: W INF P1800 (4 SEAT) TABLE #41: W INF P1800 (4 SEAT) TABLE #42: W INF P1800 (4 SEAT) TABLE #43: W INF P1800 (4 SEAT) TABLE #44: W INF P1800 (4 SEAT) TABLE #45: W INF P1800 (4 SEAT) TABLE #46: W INF P1800 (4 SEAT) TABLE #47: W INF P1800 (4 SEAT) TABLE #48: W INF P1800 (4 SEAT) TABLE #49: W INF P1800 (4 SEAT) TABLE #50: W INF P1800 (4 SEAT) TABLE #51: W INF P1800 (4 SEAT) TABLE #52: W INF P1800 (4 SEAT) TABLE #53: W INF P1800 (4 SEAT) TABLE #54: W INF P1800 (4 SEAT) TABLE #55: W INF P1800 (4 SEAT) TABLE #56: W INF P1800 (4 SEAT) TABLE #57: W INF P1800 (4 SEAT) TABLE #58: W INF P1800 (4 SEAT) TABLE #59: W INF P1800 (4 SEAT) TABLE #60: W INF P1800 (4 SEAT) TABLE #61: W INF P1800 (4 SEAT) TABLE #62: W INF P1800 (4 SEAT) TABLE #63: W INF P1800 (4 SEAT) TABLE #64: W INF P1800 (4 SEAT) TABLE #65: W INF P1800 (4 SEAT) TABLE #66: W INF P1800 (4 SEAT) TABLE #67: W INF P1800 (4 SEAT) TABLE #68: W INF P1800 (4 SEAT) TABLE #69: W INF P1800 (4 SEAT) TABLE #70: W INF P1800 (4 SEAT) TABLE #71: W INF P1800 (4 SEAT) TABLE #72: W INF P1800 (4 SEAT) TABLE #73: W INF P1800 (4 SEAT) TABLE #74: W INF P1800 (4 SEAT) TABLE #75: W INF P1800 (4 SEAT) TABLE #76: W INF P1800 (4 SEAT) TABLE #77: W INF P1800 (4 SEAT) TABLE #78: W INF P1800 (4 SEAT) TABLE #79: W INF P1800 (4 SEAT) TABLE #80: W INF P1800 (4 SEAT) TABLE #81: W INF P1800 (4 SEAT) TABLE #82: W INF P1800 (4 SEAT) TABLE #83: W INF P1800 (4 SEAT) TABLE #84: W INF P1800 (4 SEAT) TABLE #85: W INF P1800 (4 SEAT) TABLE #86: W INF P1800 (4 SEAT) TABLE #87: W INF P1800 (4 SEAT) TABLE #88: W INF P1800 (4 SEAT) TABLE #89: W INF P1800 (4 SEAT) TABLE #90: W INF P1800 (4 SEAT) TABLE #91: W INF P1800 (4 SEAT) TABLE #92: W INF P1800 (4 SEAT) TABLE #93: W INF P1800 (4 SEAT) TABLE #94: W INF P1800 (4 SEAT) TABLE #95: W INF P1800 (4 SEAT) TABLE #96: W INF P1800 (4 SEAT) TABLE #97: W INF P1800 (4 SEAT) TABLE #98: W INF P1800 (4 SEAT) TABLE #99: W INF P1800 (4 SEAT) TABLE #100: W INF P1800 (4 SEAT) TABLE #101: W INF P1800 (4 SEAT) TABLE #102: W INF P1800 (4 SEAT) TABLE #103: W INF P1800 (4 SEAT) TABLE #104: W INF P1800 (4 SEAT) TABLE #105: W INF P1800 (4 SEAT) TABLE #106: W INF P1800 (4 SEAT) TABLE #107: W INF P1800 (4 SEAT) TABLE #108: W INF P1800 (4 SEAT) TABLE #109: W INF P1800 (4 SEAT) TABLE #110: W INF P1800 (4 SEAT) TABLE #111: W INF P1800 (4 SEAT) TABLE #112: W INF P1800 (4 SEAT) TABLE #113: W INF P1800 (4 SEAT) TABLE #114: W INF P1800 (4 SEAT) TABLE #115: W INF P1800 (4 SEAT) TABLE #116: W INF P1800 (4 SEAT) TABLE #117: W INF P1800 (4 SEAT) TABLE #118: W INF P1800 (4 SEAT) TABLE #119: W INF P1800 (4 SEAT) TABLE #120: W INF P1800 (4 SEAT) TABLE #121: W INF P1800 (4 SEAT) TABLE #122: W INF P1800 (4 SEAT) TABLE #123: W INF P1800 (4 SEAT) TABLE #124: W INF P1800 (4 SEAT) TABLE #125: W INF P1800 (4 SEAT) TABLE #126: W INF P1800 (4 SEAT) TABLE #127: W INF P1800 (4 SEAT) TABLE #128: W INF P1800 (4 SEAT) TABLE #129: W INF P1800 (4 SEAT) TABLE #130: W INF P1800 (4 SEAT) TABLE #131: W INF P1800 (4 SEAT) TABLE #132: W INF P1800 (4 SEAT) TABLE #133: W INF P1800 (4 SEAT) TABLE #134: W INF P1800 (4 SEAT) TABLE #135: W INF P1800 (4 SEAT) TABLE #136: W INF P1800 (4 SEAT) TABLE #137: W INF P1800 (4 SEAT) TABLE #138: W INF P1800 (4 SEAT) TABLE #139: W INF P1800 (4 SEAT) TABLE #140: W INF P1800 (4 SEAT) TABLE #141: W INF P1800 (4 SEAT) TABLE #142: W INF P1800 (4 SEAT) TABLE #143: W INF P1800 (4 SEAT) TABLE #144: W INF P1800 (4 SEAT) TABLE #145: W INF P1800 (4 SEAT) TABLE #146: W INF P1800 (4 SEAT) TABLE #147: W INF P1800 (4 SEAT) TABLE #148: W INF P1800 (4 SEAT) TABLE #149: W INF P1800 (4 SEAT) TABLE #150: W INF P1800 (4 SEAT) TABLE #151: W INF P1800 (4 SEAT) TABLE #152: W INF P1800 (4 SEAT) TABLE #153: W INF P1800 (4 SEAT) TABLE #154: W INF P1800 (4 SEAT) TABLE #155: W INF P1800 (4 SEAT) TABLE #156: W INF P1800 (4 SEAT) TABLE #157: W INF P1800 (4 SEAT) TABLE #158: W INF P1800 (4 SEAT) TABLE #159: W INF P1800 (4 SEAT) TABLE #160: W INF P1800 (4 SEAT) TABLE #161: W INF P1800 (4 SEAT) TABLE #162: W INF P1800 (4 SEAT) TABLE #163: W INF P1800 (4 SEAT) TABLE #164: W INF P1800 (4 SEAT) TABLE #165: W INF P1800 (4 SEAT) TABLE #166: W INF P1800 (4 SEAT) TABLE #167: W INF P1800 (4 SEAT) TABLE #168: W INF P1800 (4 SEAT) TABLE #169: W INF P1800 (4 SEAT) TABLE #170: W INF P1800 (4 SEAT) TABLE #171: W INF P1800 (4 SEAT) TABLE #172: W INF P1800 (4 SEAT) TABLE #173: W INF P1800 (4 SEAT) TABLE #174: W INF P1800 (4 SEAT) TABLE #175: W INF P1800 (4 SEAT) TABLE #176: W INF P1800 (4 SEAT) TABLE #177: W INF P1800 (4 SEAT) TABLE #178: W INF P1800 (4 SEAT) TABLE #179: W INF P1800 (4 SEAT) TABLE #180: W INF P1800 (4 SEAT) TABLE #181: W INF P1800 (4 SEAT) TABLE #182: W INF P1800 (4 SEAT) TABLE #183: W INF P1800 (4 SEAT) TABLE #184: W INF P1800 (4 SEAT) TABLE #185: W INF P1800 (4 SEAT) TABLE #186: W INF P1800 (4 SEAT) TABLE #187: W INF P1800 (4 SEAT) TABLE #188: W INF P1800 (4 SEAT) TABLE #189: W INF P1800 (4 SEAT) TABLE #190: W INF P1800 (4 SEAT) TABLE #191: W INF P1800 (4 SEAT) TABLE #192: W INF P1800 (4 SEAT) TABLE #193: W INF P1800 (4 SEAT) TABLE #194: W INF P1800 (4 SEAT) TABLE #195: W INF P1800 (4 SEAT) TABLE #196: W INF P1800 (4 SEAT) TABLE #197: W INF P1800 (4 SEAT) TABLE #198: W INF P1800 (4 SEAT) TABLE #199: W INF P1800 (4 SEAT) TABLE #200: W INF P1800 (4 SEAT) TABLE #201: W INF P1800 (4 SEAT) TABLE #202: W INF P1800 (4 SEAT) TABLE #203: W INF P1800 (4 SEAT) TABLE #204: W INF P1800 (4 SEAT) TABLE #205: W INF P1800 (4 SEAT) TABLE #206: W INF P1800 (4 SEAT) TABLE #207: W INF P1800 (4 SEAT) TABLE #208: W INF P1800 (4 SEAT) TABLE #209: W INF P1800 (4 SEAT) TABLE #210: W INF P1800 (4 SEAT) TABLE #211: W INF P1800 (4 SEAT) TABLE #212: W INF P1800 (4 SEAT) TABLE #213: W INF P1800 (4 SEAT) TABLE #214: W INF P1800 (4 SEAT) TABLE #215: W INF P1800 (4 SEAT) TABLE #216: W INF P1800 (4 SEAT) TABLE #217: W INF P1800 (4 SEAT) TABLE #218: W INF P1800 (4 SEAT) TABLE #219: W INF P1800 (4 SEAT) TABLE #220: W INF P1800 (4 SEAT) TABLE #221: W INF P1800 (4 SEAT) TABLE #222: W INF P1800 (4 SEAT) TABLE #223: W INF P1800 (4 SEAT) TABLE #224: W INF P1800 (4 SEAT) TABLE #225: W INF P1800 (4 SEAT) TABLE #226: W INF P1800 (4 SEAT) TABLE #227: W INF P1800 (4 SEAT) TABLE #228: W INF P1800 (4 SEAT) TABLE #229: W INF P1800 (4 SEAT) TABLE #230: W INF P1800 (4 SEAT) TABLE #231: W INF P1800 (4 SEAT) TABLE #232: W INF P1800 (4 SEAT) TABLE #233: W INF P1800 (4 SEAT) TABLE #234: W INF P1800 (4 SEAT) TABLE #235: W INF P1800 (4 SEAT) TABLE #236: W INF P1800 (4 SEAT) TABLE #237: W INF P1800 (4 SEAT) TABLE #238: W INF P1800 (4 SEAT) TABLE #239: W INF P1800 (4 SEAT) TABLE #240: W INF P1800 (4 SEAT) TABLE #241: W INF P1800 (4 SEAT) TABLE #242: W INF P1800 (4 SEAT) TABLE #243: W INF P1800 (4 SEAT) TABLE #244: W INF P1800 (4 SEAT) TABLE #245: W INF P1800 (4 SEAT) TABLE #246: W INF P1800 (4 SEAT) TABLE #247: W INF P1800 (4 SEAT) TABLE #248: W INF P1800 (4 SEAT) TABLE #249: W INF P1800 (4 SEAT) TABLE #250: W INF P1800 (4 SEAT) TABLE #251: W INF P1800 (4 SEAT) TABLE #252: W INF P1800 (4 SEAT) TABLE #253: W INF P1800 (4 SEAT) TABLE #254: W INF P1800 (4	