

VICINITY MAP
(NOT TO SCALE)

PARCEL AREA
67,579.1 SQUARE FEET = 1.5311 ACRES

BASIS OF BEARING

SOUTH 88°00'56" WEST, BEING THE SOUTH LINE OF SECTION 26, AS DESCRIBED.

BENCHMARK

SITE BENCHMARK #1
NAIL IN NORTH FACE OF POWER POLE AT SOUTH CENTER
OF SITE.
ELEVATION = 629.40' (NAVD 88)

SITE BENCHMARK #2
ARROW ON HYDRANT AT NORTHEAST CORNER OF SITE.
ELEVATION = 629.65' (NAVD 88)

SURVEYORS NOTE

THE UNDERGROUND UTILITIES SHOWN HAVE BEEN LOCATED FROM FIELD SURVEY OF THE SURFACE AND EXISTING DRAWINGS. THE SURVEYOR MAKES NO GUARANTEE THAT THE UNDERGROUND UTILITIES SHOWN COMPRISE ALL SUCH UTILITIES IN THE AREA, AND DOES NOT WARRANT THAT THE UNDERGROUND UTILITIES SHOWN ARE IN THE EXACT LOCATION INDICATED ALTHOUGH HE DOES POSSIBLY FROM INFORMATION AVAILABLE. THE SURVEYOR HAS NOT PHYSICALLY LOCATED THE UNDERGROUND UTILITIES OTHER THAN THE STRUCTURE INVENTORY SHOWN HEREON.

LEGEND

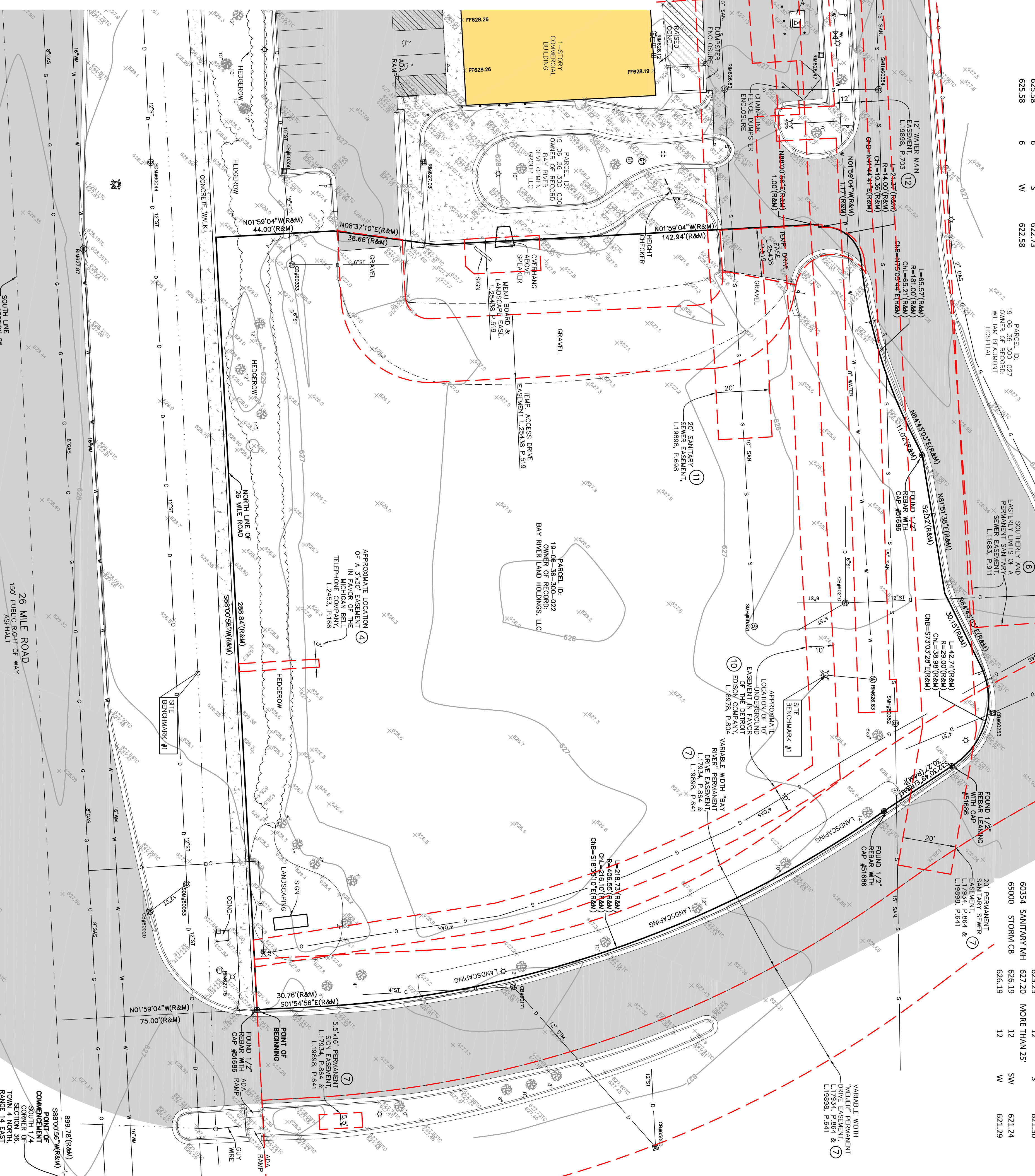
- FOUND MONUMENT (AS NOTED)
- FOUND SECTION CORNER (AS NOTED)
- (R&M) RECORD AND MEASURED DIMENSION
- (M) MEASURED DIMENSION
- (E) ELEVATION
- (I) INTERSECTION
- (P) POINT
- (C) CURVE
- (L) LANDSCAPING
- (S) SIGN
- (V) VALVE
- (W) WATER
- (G) GAS
- (T) TRAFFIC
- (M) MANHOLE
- (B) BASIN
- (D) DRAIN
- (F) FIRE
- (H) HYDRANT
- (C) CONNECTION
- (V) VALVE
- (T) TRAP
- (P) POST
- (S) SIGN
- (P) PARKING
- (B) BOUNDARY
- (S) SECTION
- (L) LINE
- (O) OVERHANG
- (C) CONCRETE
- (P) PARKING
- (E) EDGE OF ASPHALT (ASPH.)
- (E) EDGE OF GRAVEL
- (F) FENCE (AS NOTED)
- (W) WALL (AS NOTED)
- (T) TREE / BUSH LINE (AS NOTED)
- (O) OVERHEAD UTILITY LINE
- (G) GAS LINE
- (S) SANITARY LINE
- (D) DRAIN LINE
- (W) WATER LINE
- (M) MAJOR CONTOUR LINE
- (B) BUILDING AREA
- ASPHALT
- CONCRETE

MANHOLE SCHEDULE

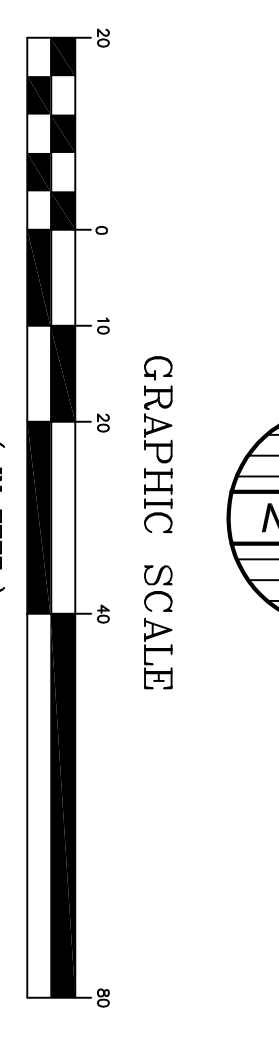
NUM	TYPE	RIM (FT)	SIZE (IN)	DIR	INV ELEV (FT)
60020	STORM CB	626.95	12	NW	623.05
60004	STORM CB	628.17	12	E	620.57
60033	STORM MH	628.17	12	W	620.65
60033	STORM MH	627.49	12	E	619.27
60171	STORM CB	627.49	12	W	619.44
60171	STORM CB	626.55	12	SE	622.79
60210	STORM CB	626.55	4	S	623.05
60210	STORM CB	625.58	12	N	617.98
60210	STORM CB	625.58	6	SE	622.68
60210	STORM CB	625.58	6	S	622.73
60210	STORM CB	625.58	6	W	622.58

MANHOLE SCHEDULE (CONTINUED)

NUM	TYPE	RIM (FT)	SIZE (IN)	DIR	INV ELEV (FT)
60253	STORM CB	625.41	12	N	620.61
60333	STORM CB	625.41	4	SE	621.51
60333	STORM CB	625.48	6	N	622.98
60333	STORM CB	625.48	6	E	622.88
60330	STORM CB	626.50	15	W	622.38
60330	STORM CB	626.50	15	E	622.40
60331	SANITARY MH	626.50	15	W	623.66
60332	SANITARY MH	625.84	FULL OF DEBRIS/WATER		
60333	STORM CB	625.51	MORE THAN 25'	SE	614.85
60353	STORM CB	625.25	12	S	621.50
60354	SANITARY MH	627.20	MORE THAN 25'	SW	621.24
65000	STORM CB	626.19	12	W	621.29



GRAPHIC SCALE



PROPERTY DESCRIPTION

PART OF THE SOUTHWEST 1/4 OF SECTION 26, TOWN 4 NORTH, RANGE 14 EAST, LENOX TOWNSHIP, MACOMB COUNTY, MICHIGAN, BEING DESCRIBED AS: COMMENCING AT THE SOUTH LINE OF SECTION 26; THENCE SOUTH 88°00'56\"/>

TITLE REPORT NOTE

ONLY THOSE EXCEPTIONS CONTAINED WITHIN THE CHICAGO TITLE INSURANCE COMPANY COMPANY REPORT NO. 5015248395, DATED AUGUST 13, 2021, ARE LISTED BELOW FOR THE CERTAIN SUBJECT PARCEL. TO OBTAIN ADDITIONAL INFORMATION, CONTACT THE CERTAIN SURVEYOR.

4. RIGHTS) OF WAY AND/OR EASEMENTS) AND RIGHTS INCIDENTAL HERETO, AS GRANTED TO MICHIGAN CONSOLIDATED GAS COMPANY, GRANTED BY PARCEL RELEASE RECORDED AT LIBER 17934, PAGE 89 (BANKER EASEMENTS AS AFFECTED BY PARTIAL RELEASE RECORDED AT LIBER 17934, PAGE 195. (DOES NOT APPLY TO SUBJECT PARCEL)

SURVEYORS CERTIFICATION

I, THE SURVEYOR, CERTIFY THAT I AM A LICENSED SURVEYOR IN THE STATE OF MICHIGAN, AND THAT I HAVE PERSONALLY CONDUCTED THE SURVEY AND THE ACCURACY THEREOF IS GUARANTEED BY MY PROFESSIONAL LIABILITY INSURANCE. I HAVE READ THE ABOVE PROPERTY DESCRIPTION AND HAVE FOUND IT TO ACCURATELY DESCRIBE THE PROPERTY DESCRIBED IN THE ABOVE PROPERTY DESCRIPTION.

DRAFT

ANTHONY T. SYCO, JR., P.S.
PROFESSIONAL SURVEYOR
22556 GRANT AVENUE, EASTPOINTE, MI 48021
TSyco@emtec-surveys.com

ALTA / NSPS LAND TITLE SURVEY

PREPARED FOR: GPD GROUP - ATLANTA
36505 26 MILE ROAD, LENOX TOWNSHIP, MICHIGAN,
PART OF SECTION 36,
TOWN 4 NORTH, RANGE 14 EAST

KEM-TEC PROFESSIONAL ENGINEERING, SURVEYING & ENVIRONMENTAL SERVICES
A GROUP OF COMPANIES
Eastpointe Detroit Ann Arbor Grand Blanc
(800) 295-7222 (313) 758-0677 (734) 994-0888 (888) 694-0001
www.kemtecgroupofcompanies.com

DRAWN BY:	GST/JDM	09/20/21
CHECKED BY:	ATS	09/20/21
DATE:	SEPTEMBER 20, 2021	
PROJECT NO.:	21-02697	SCALE: 1" = 20'
REVISION	DATE	DESCRIPTION
1	10-04-21	ATS
2	09-29-21	JV

1 OF 1 SHEETS