

MARK	QTY	DESCRIPTION	MODEL	FINISH	NOTES
A		SEMI-RECESSED PAPER TOWEL & WASTE RECEPTACLE	ASI 646124A (SEMI-RECESSED) PAPER ROLL AUTOMATIC DISPENSING OR BOBRICK B-3474 (SEMI-RECESSED) PAPER ROLL AUTOMATIC DISPENSING	STAINLESS STEEL	
B		NEW SEMI-RECESSED HAND DRYER OPTIONAL FOR FRANCHISEE RESTAURANTS.	ASI 10-0194-F SURFACE MOUNTED STAINLESS STEEL HAND DRYER		
C		TOILET PAPER DISPENSER, SURFACE MOUNTED JIMBO ROLL TOILET TISSUE DISPENSER	ASI MODEL NO. 0042	SATIN	OUTER CABINET, STAINLESS STEEL
D		COAT HOOK	BRADLEY 1114 SATIN STAINLESS STEEL HOOK	SATIN	SEE PLAN FOR LOCATIONS
E		BABY CHANGING STATION	KOALA KARE PRODUCTS KB200-00	CREAM	REFER TO MANUFACTURER FOR INSTALLATION
F		TWO WALL TOILET COMPARTMENT GRAB BAR 1/4" DIAMETER	ASI - 3800 TYPE 51	SATIN	STAINLESS STEEL IV EXPOSED MOUNTING, FURNISHED COMPLETE IV MOUNTING KIT
G		NOT USED			
H		MIRROR	VEEK M25B 24 X 36 MIRROR	SATIN	STAINLESS STEEL - ANGLE FRAMED IV WELDED CORNERS
J		8" VERTICAL GRAB BAR	MAINLINE FB2B12	SATIN	STAINLESS STEEL IV EXPOSED MOUNTING, FURNISHED COMPLETE IV MOUNTING KIT
K		WALL MOUNTED 'ECOLAB' HANDS-FREE SOAP DISPENSER		BLACK	SUPPLIED BY KEP (K0204)
L		NOT USED			
M		NOT USED			

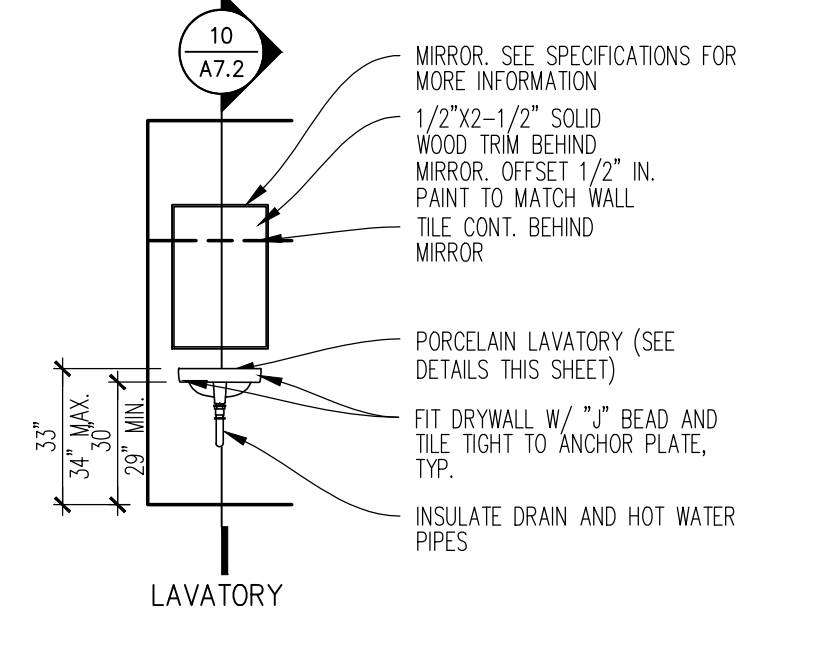
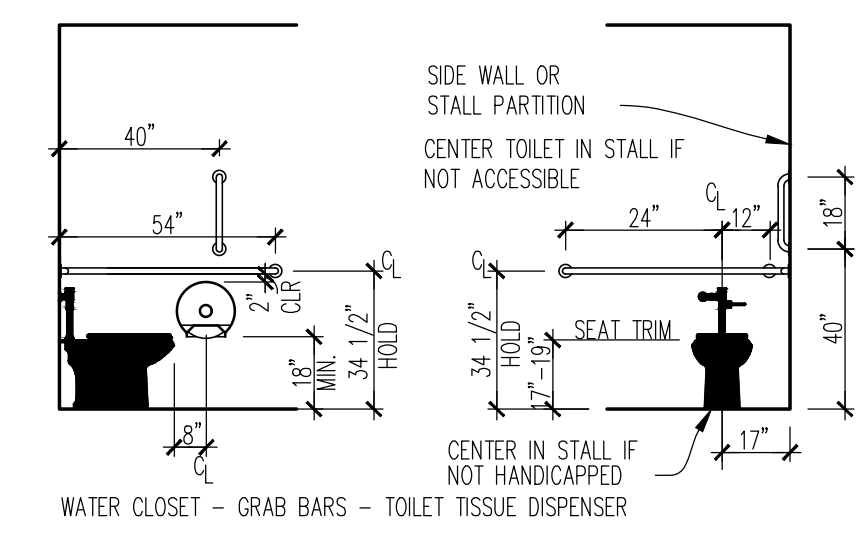
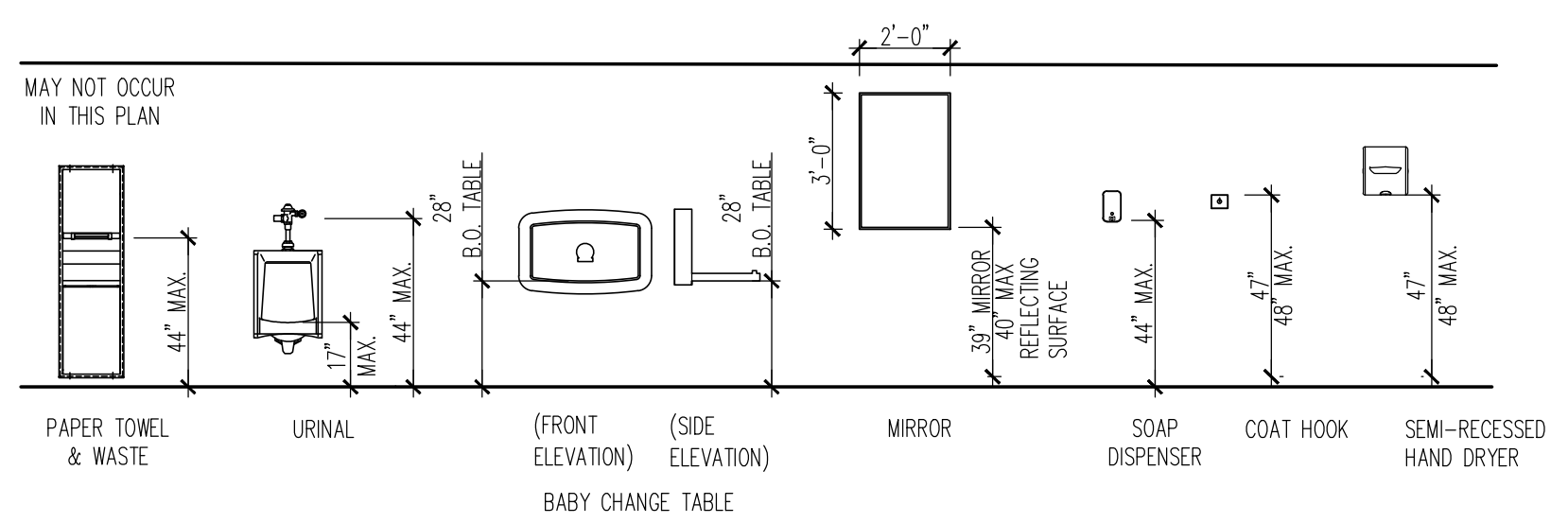
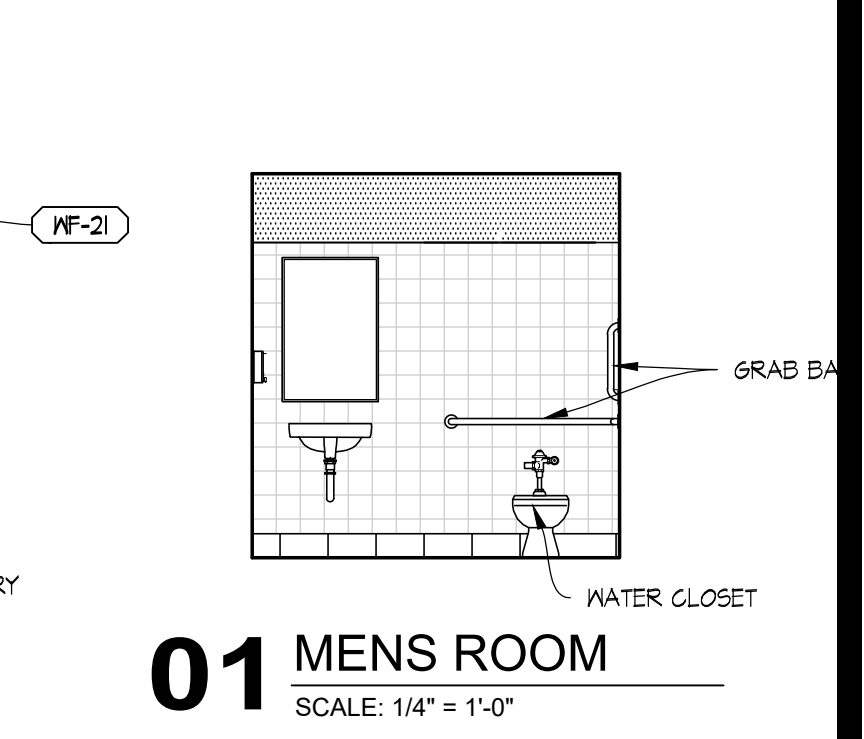
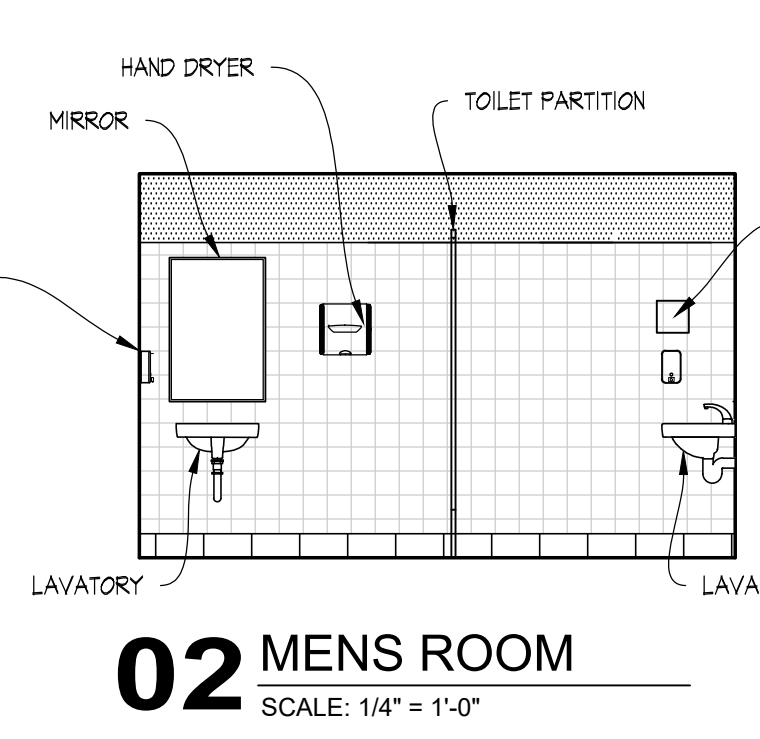
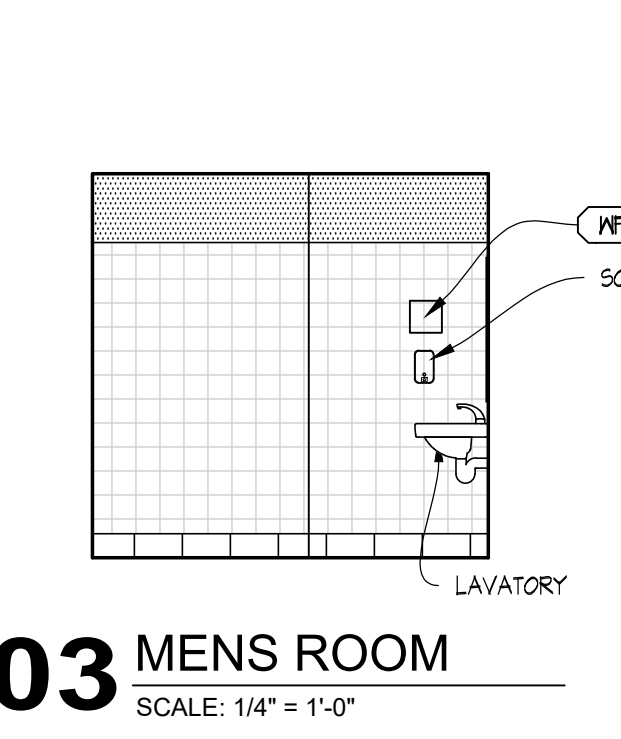
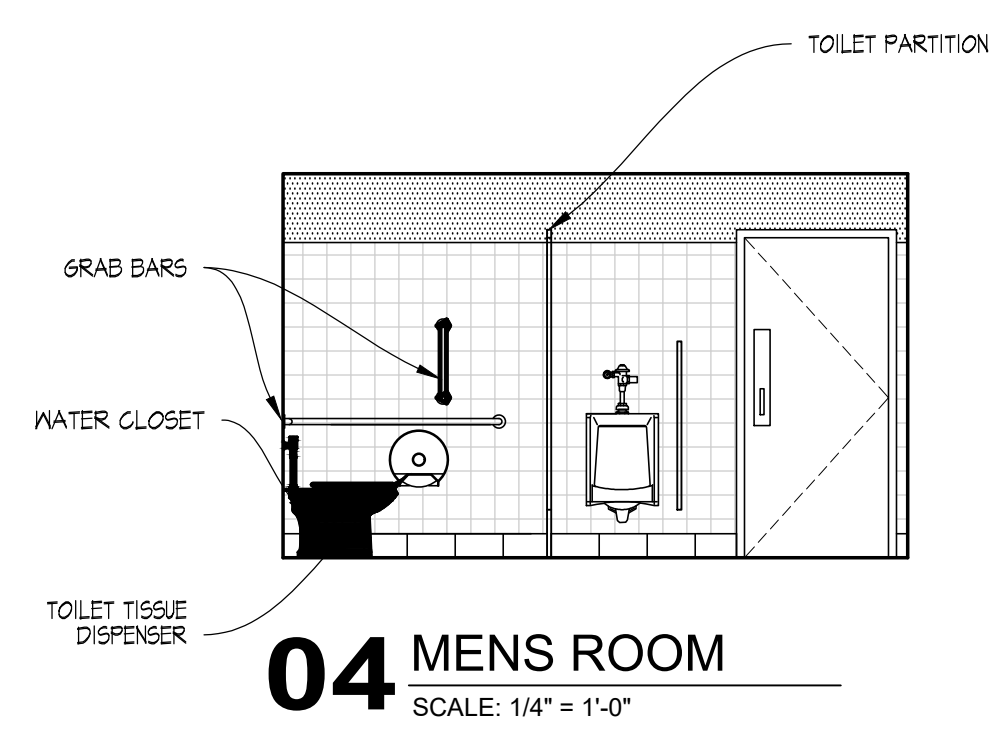
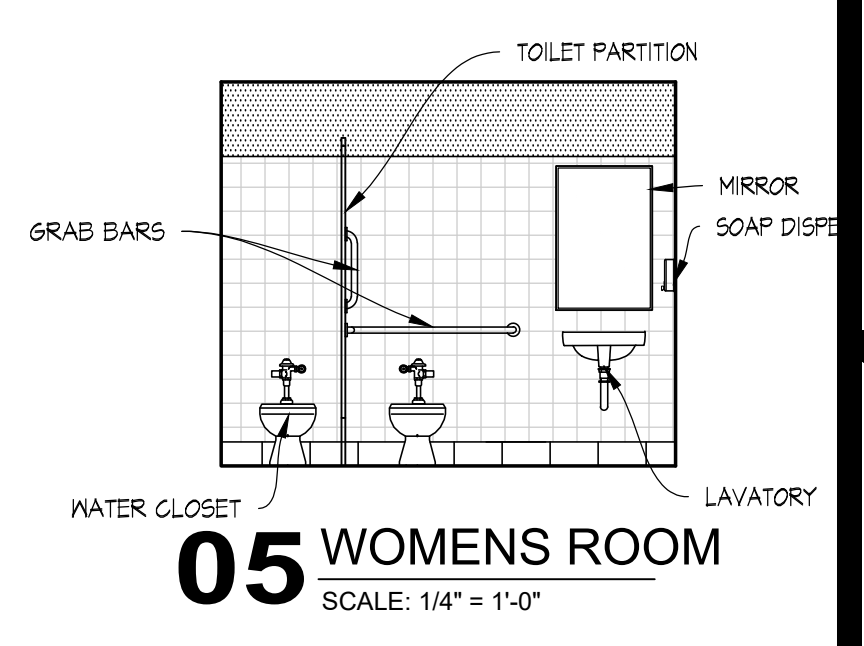
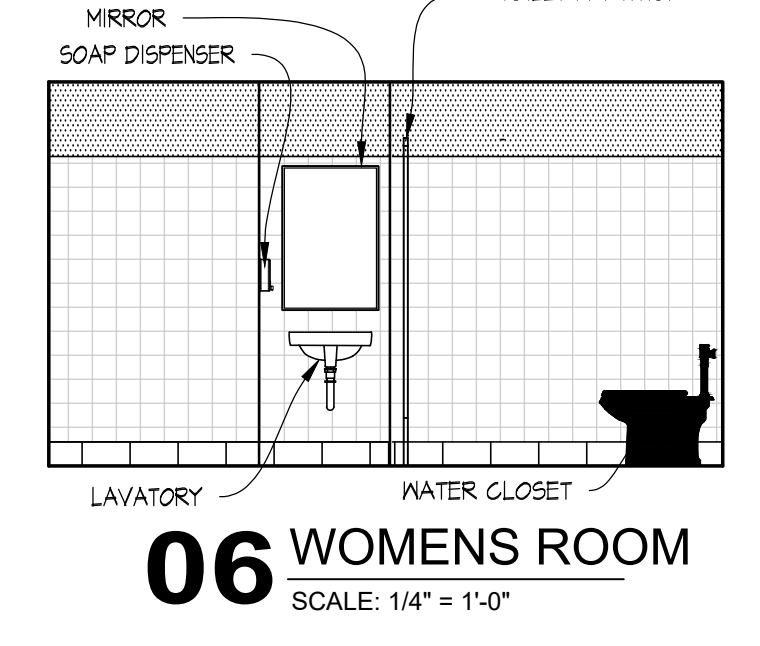
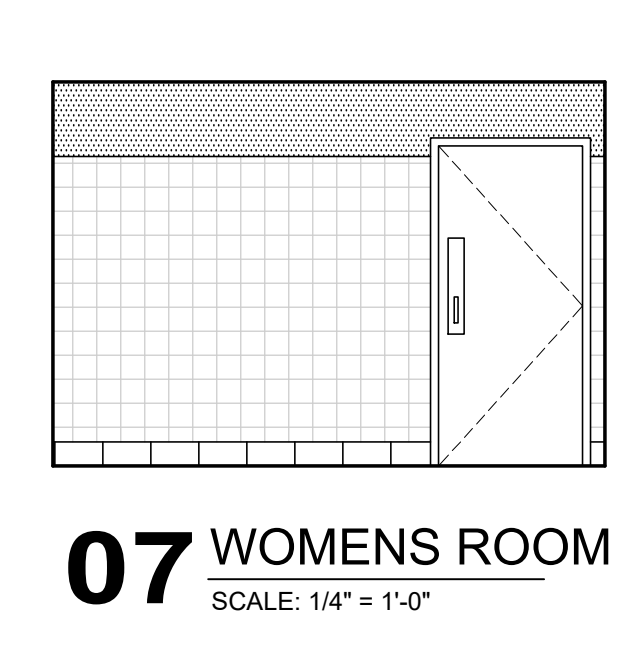
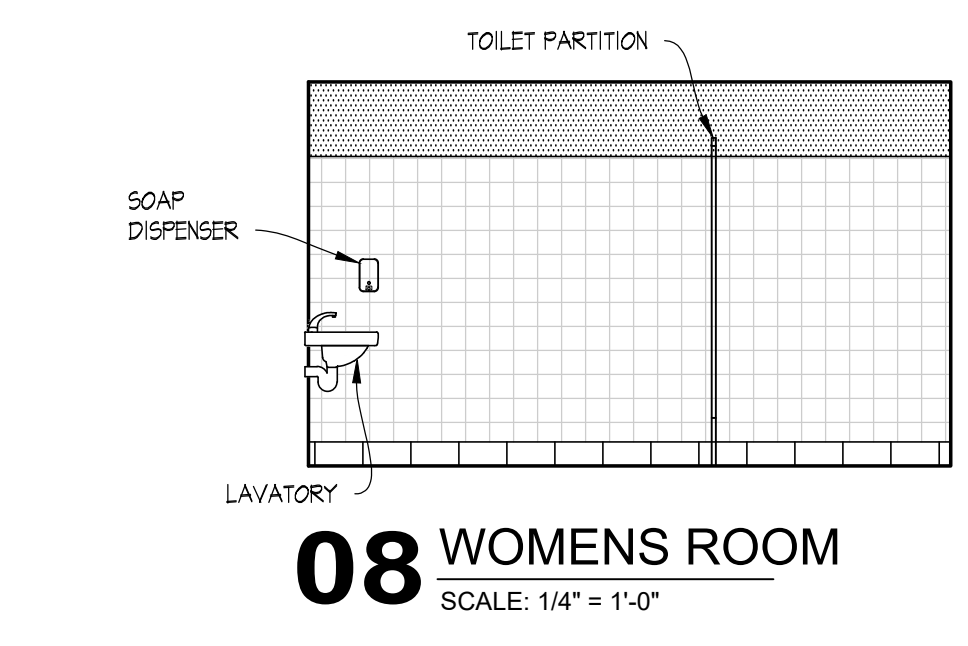
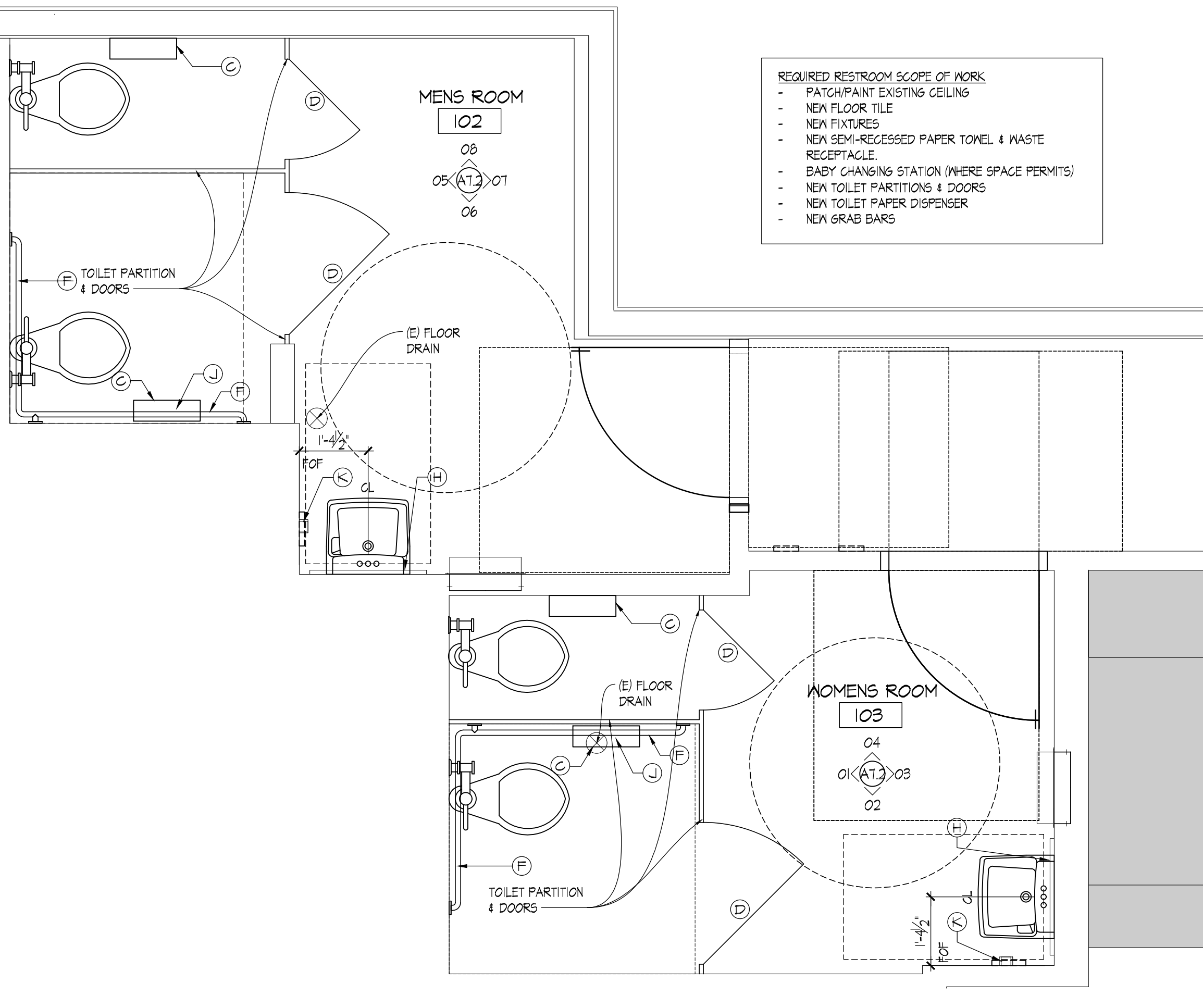
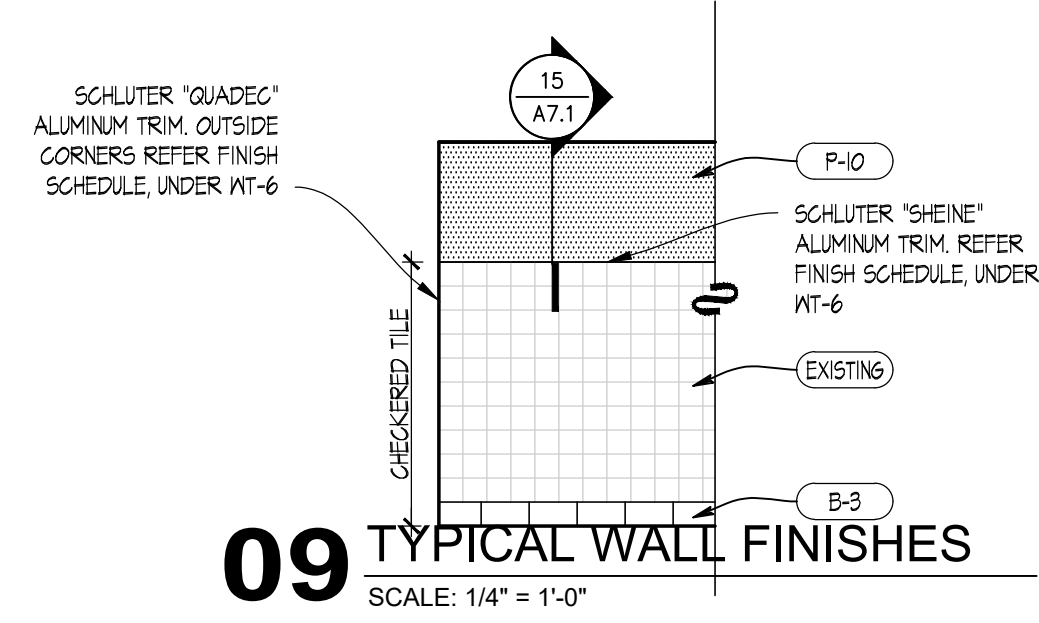
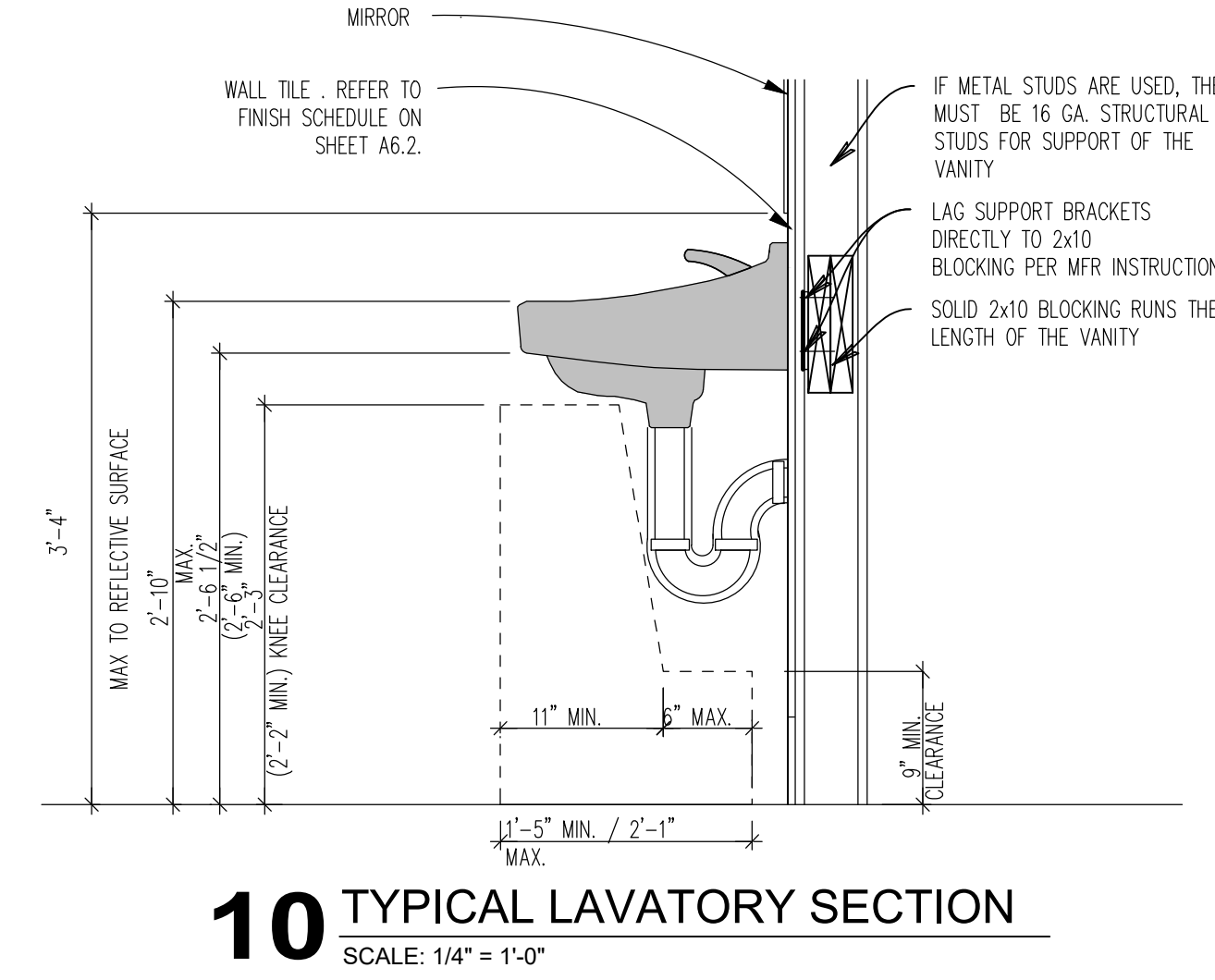
NOTE: REFER TO SUPPLIER SHEET FOR BUILDING MATERIAL CONSOLIDATOR CONTACT INFORMATION.

- ### RESTROOM SCOPE
- REMOVE EXISTING PLUMBING FIXTURES AND RESTROOM ACCESSORIES AS REQUIRED FOR INSTALLATION OF NEW FINISHES. VERIFY W/ OWNER'S REPRESENTATIVE IF ITEMS ARE TO BE STORED AND REUSED.
 - REFER TO DESIGN GUIDE FOR COMPLIANT EXISTING WALL TILE TO REMAIN.
 - REMOVE EXISTING FLOOR & WALL FINISHES THROUGHOUT THE RESTROOMS, AS REQUIRED FOR NEW FINISHES. CLEAN, PREP, & REPAIR SUBSTRATES TO SPECIFICATION REQUIREMENTS OF NEW SCHEDULED FINISHES. REPLACE DAMAGED SUBSTRATES AS REQUIRED, DO NOT ADD LAYERS OF SUBSTRATE.
 - REMOVE EXISTING TOILET PARTITIONS AND ASSOCIATED HARDWARE. VERIFY W/ OWNER'S REPRESENTATIVE IF ITEMS ARE TO BE STORED AND REUSED.
- ### RESTROOM ELEVATIONS GENERAL NOTES
- FIELD VERIFY AND/OR PROVIDE ADDITIONAL REQUIREMENTS TO PROVIDE ACCESSIBILITY PER LOCAL CODE AND THE ADA STANDARDS.
- NOTE: SEE SHEET A11 FOR ART PACK SCHEDULE

SITE NUMBER:	0534
BUILDING TYPE:	CG348
ASSET TYPE:	FREESTANDING
CLASSIFICATION:	REFRESH LT
OWNER:	STARBOARD
BASE VERSION:	2021 SPRING
UPGRADE CLASSIFICATION:	N/A
PROJECT YEAR:	2022
DESIGN TYPE:	(2.0) UM BRIGHT
DRAWING RELEASE:	2021 SPRING

Linear Architecture LLC
MARC BRUNDIGE
 Architect
 4436 Harvest Hill Rd.
 Dallas, TX 75244
 PHONE: 972.929.9226

Starboard Group
 STARBOARD GROUP
 12540 W. ATLANTIC BLVD.
 CORAL SPRINGS, FL 33071
 OFFICE: (954)255-2266



NOTE CONTRACTOR TO PROVIDE 2X6 WOOD BLOCKING IN WALL FOR ANCHORAGE OF GRAB BARS AS REQUIRED.

Wendy's
 #05341 (STARBOARD #702)
 2 CIETEN PLAZA
 BARRY, IL 62312

REV.	DATE	DESCRIPTION



SHEET NAME
INTERIOR ELEVATIONS RESTROOMS
 SHEET NUMBER
A7.2

11/23/2022, 7:34 PM, C:\Users\choc\OneDrive - Linear Architecture - Inc\Projects\Wendys\21-128 Starboard 702-05341 Barry, IL (Refresh, Remodel)\Construction Documents\03_A7_INTERIOR_ELEVATIONS.dwg, inhp