

**RESTROOM FIXTURE AND HARDWARE SCHEDULE**

MARK	QTY	DESCRIPTION	MODEL	FINISH	NOTES
A		SEMI-RECESSED PAPER TOWEL & WASTE RECEPTACLE	ASI 646424A (SEMI-RECESSED) PAPER ROLL AUTOMATIC DISPENSING OR BOERICK B-3914 (SEMI-RECESSED) PAPER ROLL AUTOMATIC DISPENSING	STAINLESS STEEL	
B		NEW SEMI-RECESSED HAND DRYER OPTIONAL FOR FRANCHISEE RESTAURANTS	ASI 10-01894-1 SURFACE MOUNTED STAINLESS STEEL HAND DRYER		
C		TOILET PAPER DISPENSER, SURFACE MOUNTED JUMBO ROLL TOILET TISSUE DISPENSER	ASI MODEL NO. 0042	SATIN	OUTER CABINET, STAINLESS STEEL
D		COAT HOOK	BRADLEY #114 SATIN STAINLESS STEEL HOOK	SATIN	SEE PLAN FOR LOCATIONS
E		BABY CHANGING STATION	KOALA KARE PRODUCTS KB200-00	CREAM	REFER TO MANUFACTURER FOR INSTALLATION
F		TWO WALL TOILET COMPARTMENT GRAB BAR 1/4" DIAMETER	ASI - 3800 TYPE 5T	SATIN	STAINLESS STEEL W/ EXPOSED MOUNTING, FURNISHED COMPLETE W/ MOUNTING KIT
G		NOT USED			
H		MIRROR	MEEK M25B 24 X 36 MIRROR	SATIN	STAINLESS STEEL - ANGLE FRAMED W/ WELDED CORNERS
J		18" VERTICAL GRAB BAR	MAINLINE PB2312	SATIN	STAINLESS STEEL W/ EXPOSED MOUNTING, FURNISHED COMPLETE W/ MOUNTING KIT
K		WALL MOUNTED 'ECOLAB' HANDS-FREE SOAP DISPENSER		BLACK	SUPPLIED BY KED (G0204)
L		NOT USED			
M		NOT USED			

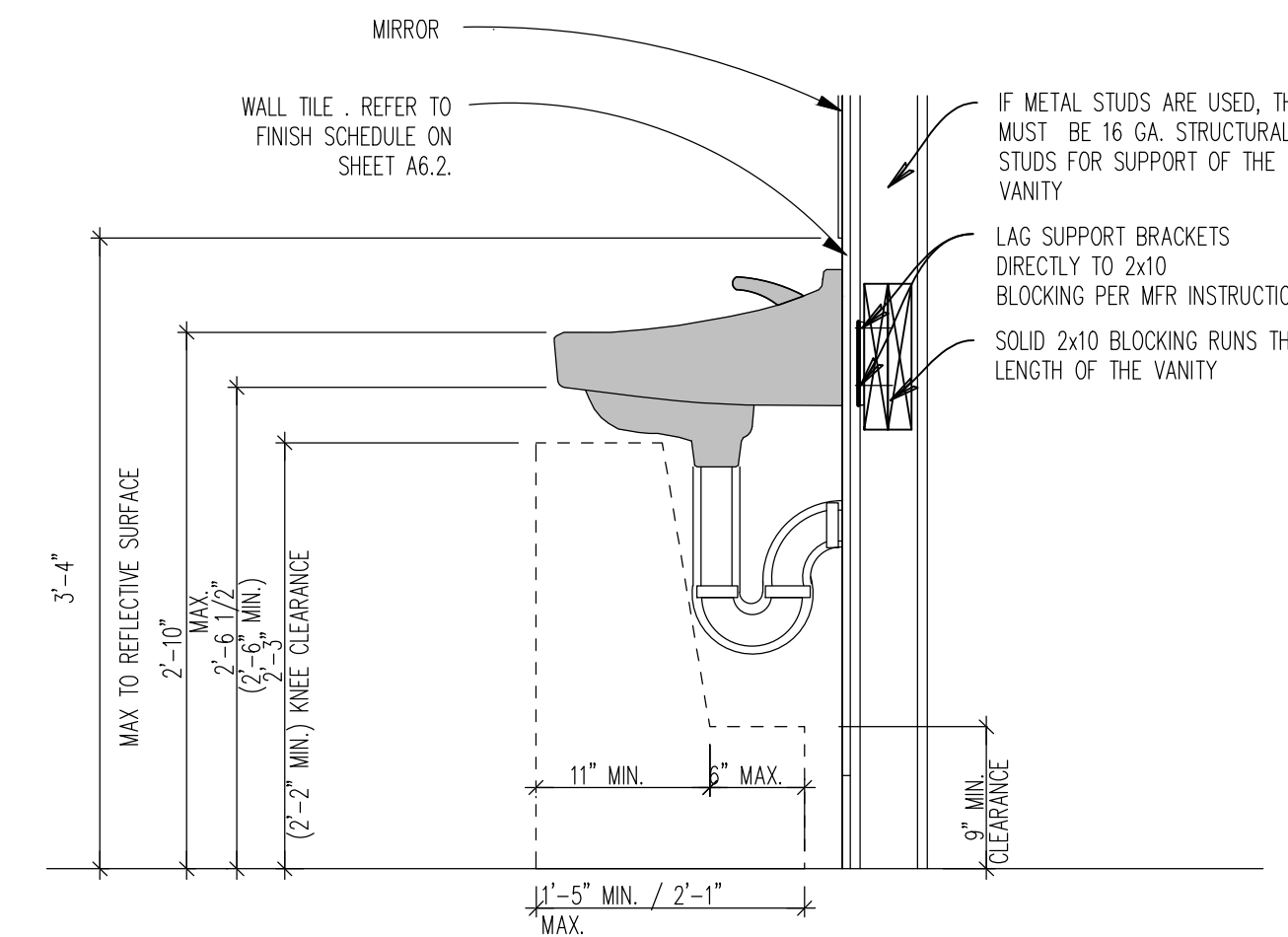
NOTE: REFER TO SUPPLIER SHEET FOR BUILDING MATERIAL CONSOLIDATOR CONTACT INFORMATION.

**RESTROOM SCOPE**

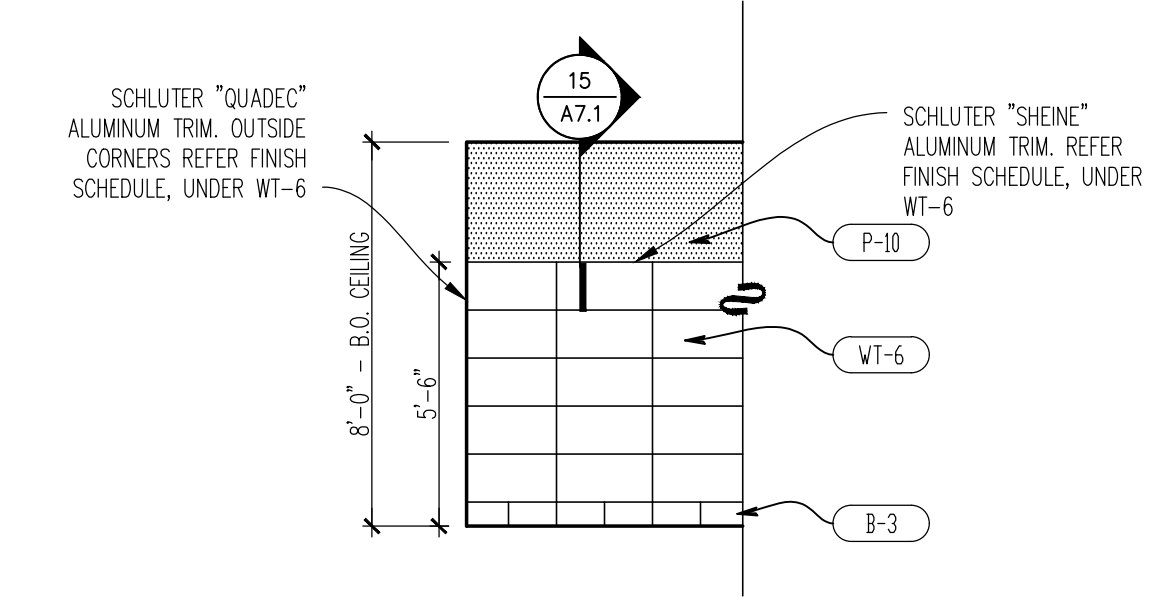
- REMOVE EXISTING PLUMBING FIXTURES AND RESTROOM ACCESSORIES AS REQUIRED FOR INSTALLATION OF NEW FINISHES. VERIFY W/ OWNER'S REPRESENTATIVE IF ITEMS ARE TO BE STORED AND REUSED.
- REFER TO DESIGN GUIDE FOR COMPLIANT EXISTING WALL TILE TO REMAIN.
- REMOVE EXISTING FLOOR & WALL FINISHES THROUGHOUT THE RESTROOMS, AS REQUIRED FOR NEW FINISHES. CLEAN, PREP, & REPAIR SUBSTRATES TO SPECIFICATION REQUIREMENTS OF NEW SCHEDULED FINISHES. REPLACE DAMAGED SUBSTRATES AS REQUIRED, DO NOT ADD LAYERS OF SUBSTRATE.
- REMOVE EXISTING TOILET PARTITIONS AND ASSOCIATED HARDWARE. VERIFY W/ OWNER'S REPRESENTATIVE IF ITEMS ARE TO BE STORED AND REUSED.

**RESTROOM ELEVATIONS GENERAL NOTES**

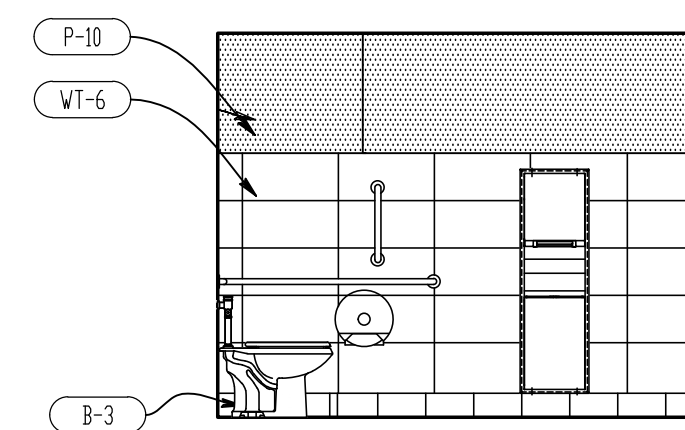
- FIELD VERIFY AND/OR PROVIDE ADDITIONAL REQUIREMENTS TO PROVIDE ACCESSIBILITY PER LOCAL CODE AND THE ADA STANDARDS.
- NOTE: SEE SHEET EQ11 FOR ART PACK SCHEDULE



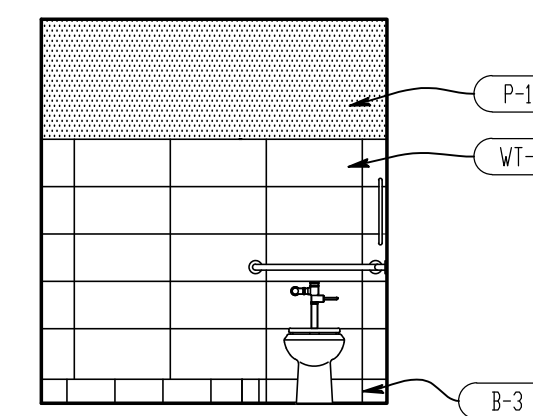
**10 TYPICAL LAVATORY SECTION**  
SCALE: 1" = 1'-0"



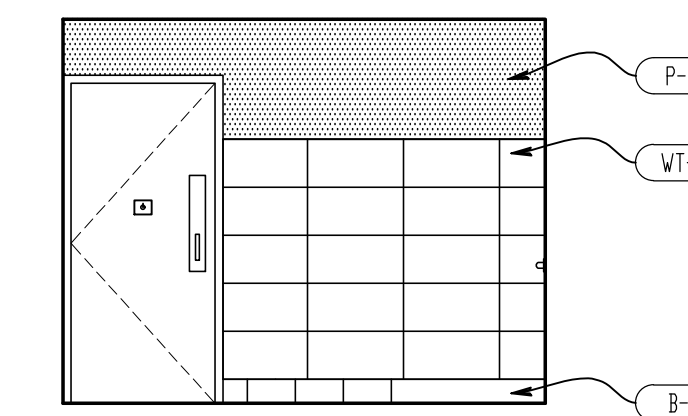
**09 TYPICAL WALL FINISHES**  
SCALE: 1/4" = 1'-0"



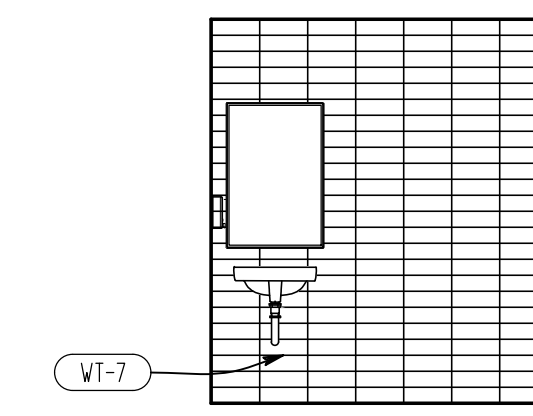
**08 WOMEN'S RR RM. 103**  
SCALE: 1/4" = 1'-0"



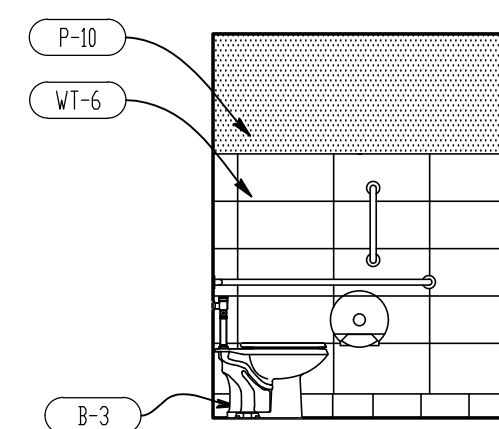
**07 WOMEN'S RR RM. 103**  
SCALE: 1/4" = 1'-0"



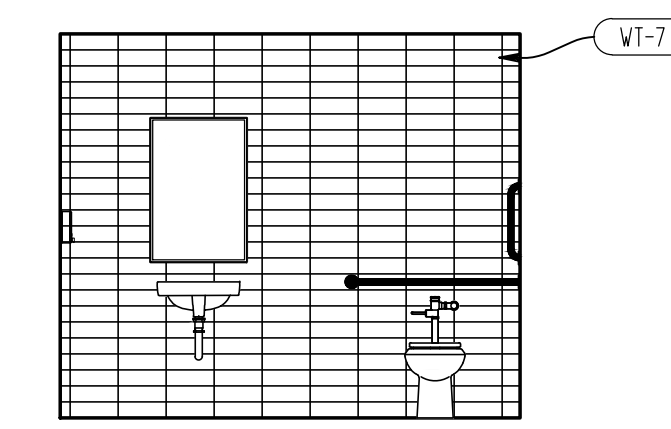
**06 WOMEN'S RR RM. 103**  
SCALE: 1/4" = 1'-0"



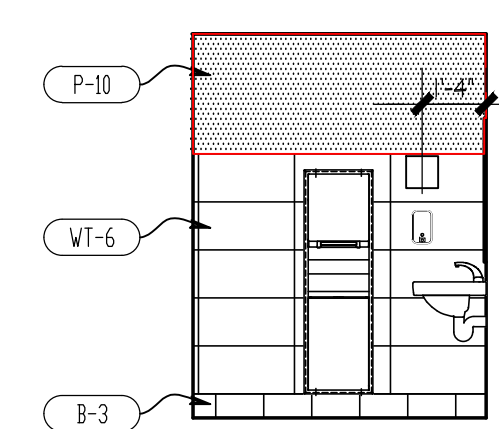
**05 WOMEN'S RR RM. 103**  
SCALE: 1/4" = 1'-0"



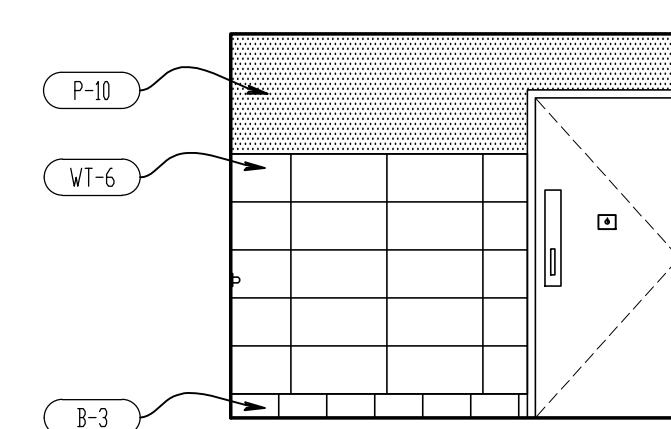
**04 MEN'S RR RM. 102**  
SCALE: 1/4" = 1'-0"



**03 MEN'S RR RM. 102**  
SCALE: 1/4" = 1'-0"

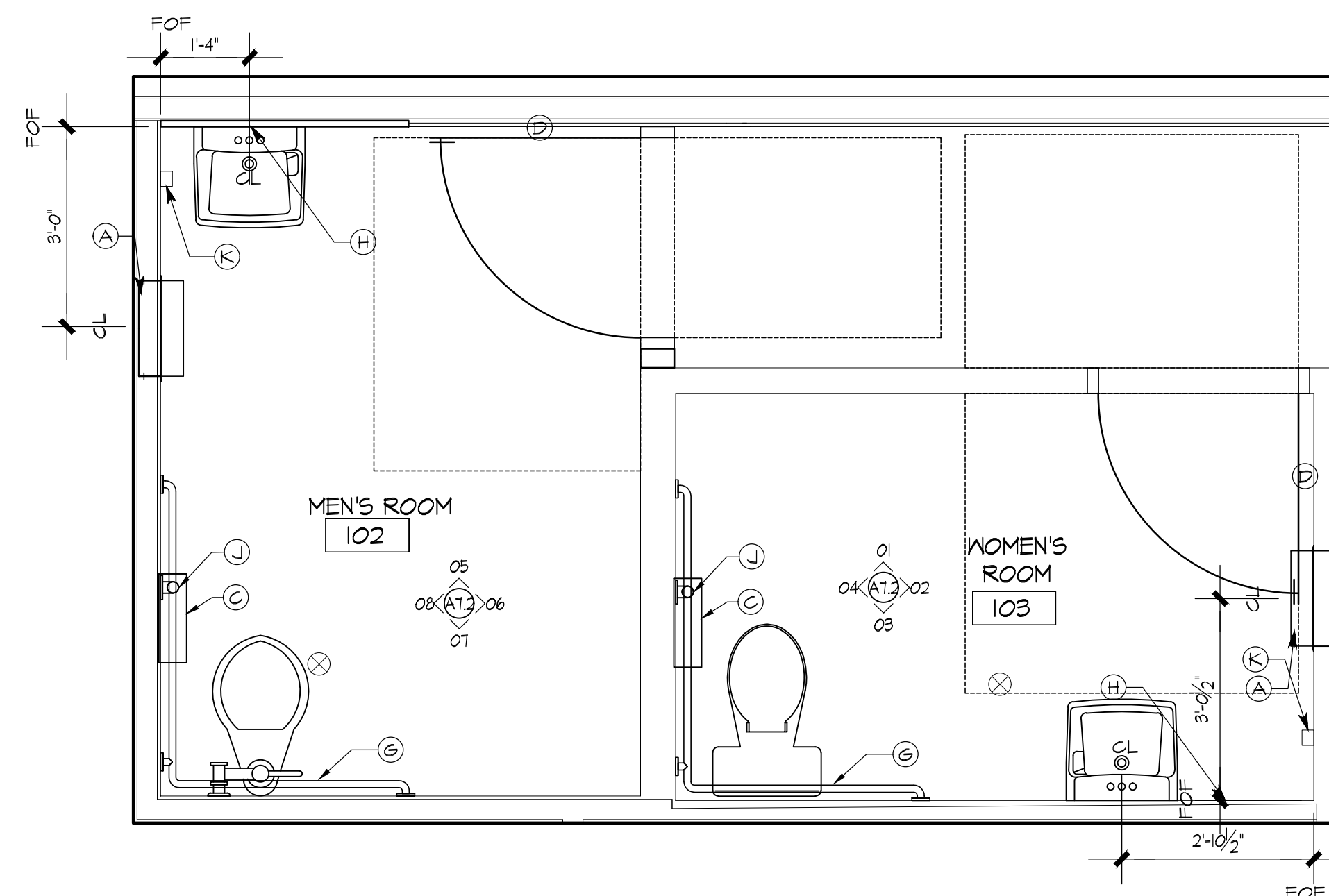


**02 MEN'S RR RM. 102**  
SCALE: 1/4" = 1'-0"

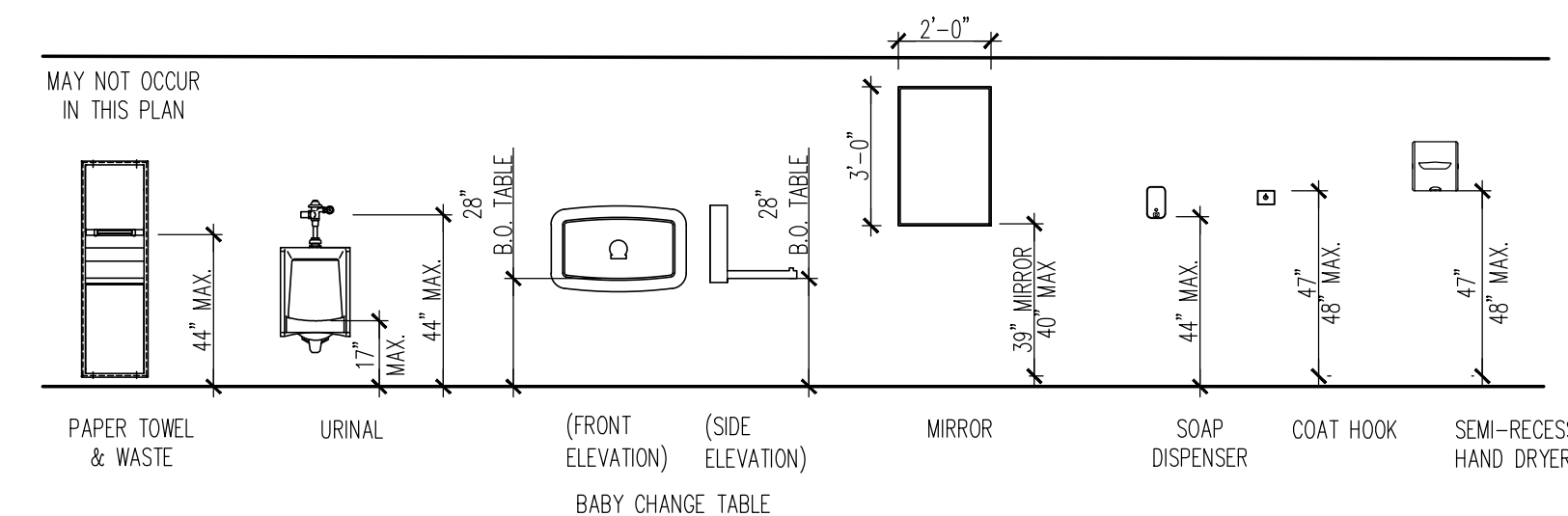


**01 MEN'S RR RM. 102**  
SCALE: 1/4" = 1'-0"

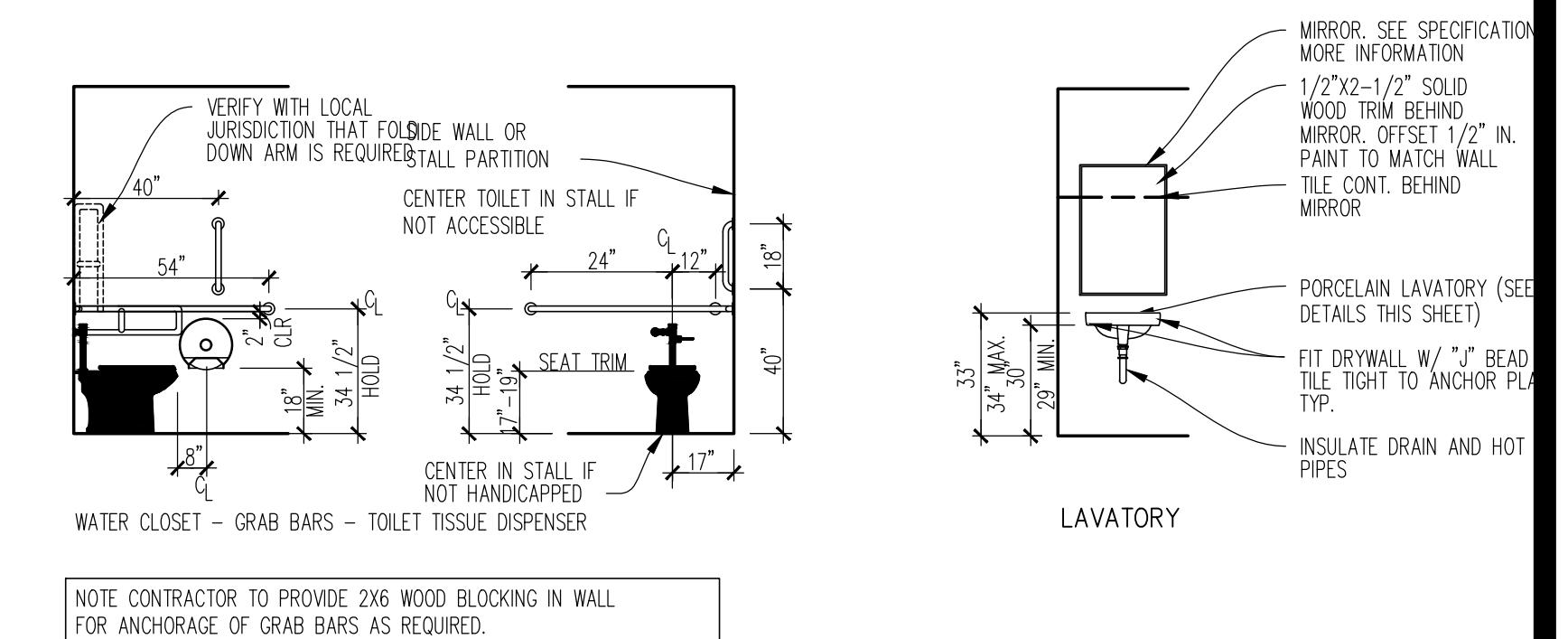
- REQUIRED RESTROOM SCOPE OF WORK**
- PATCH/PAINT EXISTING CEILING
  - NEW WALL TILE. REFER TO DESIGN GUIDE FOR COMPLIANT EXISTING FINISHES TO REMAIN.
  - NEW FLOOR TILE
  - NEW FIXTURES
  - NEW SEMI-RECESSED PAPER TOWEL & WASTE RECEPTACLE. FRANCHISEE OPTION. NEW SEMI-RECESSED HAND DRYER. G.C. TO COORDINATE W/ OWNER'S REPRESENTATIVE THE DESIRED UNIT OR COMBINATION OF BOTH UNITS.
  - NEW TOILET PARTITIONS & DOORS
  - NEW TOILET PAPER DISPENSER
  - NEW GRAB BARS



**A ENLARGED RESTROOM FLOOR PLAN**  
SCALE: 1/2" = 1'-0"



**00 TYPICAL RESTROOM ACCESSORIES**  
SCALE: NTS



SITE NUMBER:	00915
BUILDING TYPE:	3076
ASSET TYPE:	FREESTANDING
CLASSIFICATION:	REFRESH
OWNER:	STARBOARD
BASE VERSION:	2021 SPRING
UPGRADE CLASSIFICATION:	N/A
PROJECT YEAR:	2022
DESIGN TYPE:	(2.0) UM BRIGHT
DRAWING RELEASE:	2021 SPRING

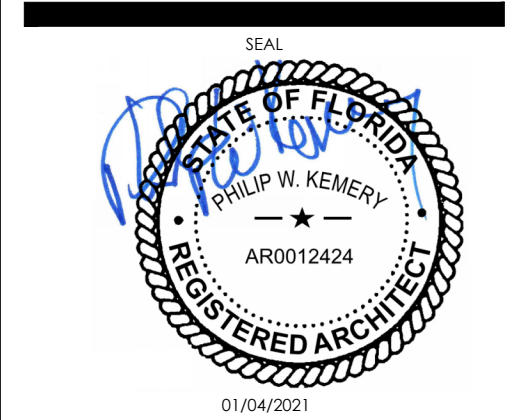
Linear Architecture LLC  
Philip Kemery,  
Architect  
4436 Harvest Hill Rd.  
Dallas, TX 75244  
PHONE: 972.929.9226



STARBOARD GROUP  
12540 W. ATLANTIC BLVD.  
CORAL SPRINGS, FL 33071  
OFFICE: (954)255-2266

**Wendy's.**  
#00915 (STARBOARD #507)  
13119 N. DALE MABRY HWY.  
TAMPA, FL 33618

REV.	DATE	DESCRIPTION



SHEET NAME  
**INTERIOR ELEVATIONS RESTROOMS**

SHEET NUMBER  
**A7.2**