

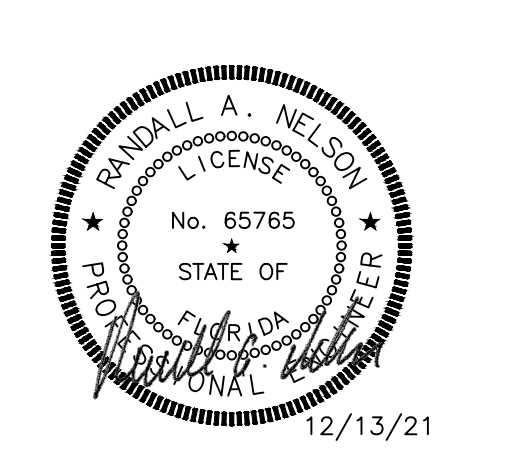
SITE NUMBER:	00495
BUILDING TYPE:	3076
ASSET TYPE:	FREE STANDING
CLASSIFICATION:	REFRESH
OWNER:	STARBOARD
BASE VERSION:	2021 SPRING
UPGRADE CLASSIFICATION:	N/A
PROJECT YEAR:	2022
DESIGN TYPE:	(2.0) UM BRIGHT
DRAWING RELEASE:	2021 SPRING



STARBOARD GROUP
12540 W. ATLANTIC BLVD.
CORAL SPRINGS, FL 33071
OFFICE: (954)255-2266

Wendy's.
#00495 (STARBOARD #504)
1501 HILLSBOROUGH AVE.
TAMPA, FL 33610

REV.	DATE	DESCRIPTION



SHEET NAME
MECHANICAL PLAN

SHEET NUMBER
M1.1

MECHANICAL LEGEND

SYMBOL	DESCRIPTION	SYMBOL	DESCRIPTION	ABBREVIATIONS
	DIFFUSER		EQUIPMENT MARK	AFF ABOVE FINISHED FLOOR
	RETURN AIR GRILLE		EQUIPMENT NUMBER	BTU BRITISH THERMAL UNIT
	RETURN OR EXHAUST DUCT UP		INDICATES DETAIL, PLAN, SECTION, AND/OR DIAGRAM (APPLIES ONLY WHERE INDICATED ON DRAWINGS)	CFM CUBIC FEET PER MINUTE
	SUPPLY DUCT UP		INDICATES DRAWING ON WHICH DETAIL APPEARS	COMP COMPRESSOR
	SUPPLY DUCT DOWN		INDICATES TYPICAL DETAIL (APPLIES TO ALL CONTRACT DRAWINGS)	DB DRY BULB
	RETURN OR EXHAUST DUCT DOWN		INDICATES DRAWING ON WHICH DETAIL APPEARS	DN DOWN
	ROUND DUCT DOWN		INDICATES SECTION NUMBER	DX DIRECT EXPANSION
	ROUND DUCT UP		INDICATES ON WHICH DRAWING SECTION APPEARS	EA EACH
	INDICATES REVISION & NUMBER		INDICATES DRAWING ON WHICH DETAIL APPEARS	EAT ENTERING AIR TEMPERATURE
	CONNECT NEW TO EXISTING		INDICATES TYPICAL DETAIL (APPLIES TO ALL CONTRACT DRAWINGS)	EFF EFFICIENCY
	SHEET NOTE NUMBER		INDICATES DRAWING ON WHICH DETAIL APPEARS	ESP EXTERNAL STATIC PRESSURE
	MARK NECK SIZE		INDICATES SECTION NUMBER	ETC AND SO FORTH
	MARK NECK SIZE		INDICATES ON WHICH DRAWING SECTION APPEARS	ETR EXISTING TO REMAIN
	MARK NECK SIZE		INDICATES REVISION & NUMBER	EX EXHAUST
	THERMOSTAT		INDICATES REVISION & NUMBER	"F DEGREES FAHRENHEIT
	SENSOR		INDICATES REVISION & NUMBER	FLA FULL LOAD AMPS
	DOOR UNDERCUT		INDICATES REVISION & NUMBER	FPM FEET PER MINUTE
	DOOR UNDERCUT		INDICATES REVISION & NUMBER	FT FEET
			INDICATES REVISION & NUMBER	GPM GALLONS PER MINUTE
			INDICATES REVISION & NUMBER	GRS/LB GRAINS PER POUND
			INDICATES REVISION & NUMBER	HP HORSEPOWER
			INDICATES REVISION & NUMBER	HZ HERTZ
			INDICATES REVISION & NUMBER	IN INCHES
			INDICATES REVISION & NUMBER	KW KILOWATT
			INDICATES REVISION & NUMBER	MBH THOUSANDS OF BTU PER HOUR
			INDICATES REVISION & NUMBER	MIN MINIMUM
			INDICATES REVISION & NUMBER	NEG NEGATIVE
			INDICATES REVISION & NUMBER	NTS NOT TO SCALE
			INDICATES REVISION & NUMBER	OA OUTSIDE AIR
			INDICATES REVISION & NUMBER	OBD OPPOSED BLADE DAMPER
			INDICATES REVISION & NUMBER	OC ON CENTER
			INDICATES REVISION & NUMBER	PH PHASE
			INDICATES REVISION & NUMBER	PSI POUNDS PER SQUARE INCH
			INDICATES REVISION & NUMBER	RH RELATIVE HUMIDITY
			INDICATES REVISION & NUMBER	SA SUPPLY AIR
			INDICATES REVISION & NUMBER	SH SENSIBLE HEAT
			INDICATES REVISION & NUMBER	SP STATIC PRESSURE
			INDICATES REVISION & NUMBER	TEMP TEMPERATURE
			INDICATES REVISION & NUMBER	TYP TYPICAL
			INDICATES REVISION & NUMBER	UC UNDERCUT
			INDICATES REVISION & NUMBER	VOLT VOLTAGE
			INDICATES REVISION & NUMBER	W/O WITHOUT
			INDICATES REVISION & NUMBER	WB WET BULB
			INDICATES REVISION & NUMBER	WC WATER COLUMN

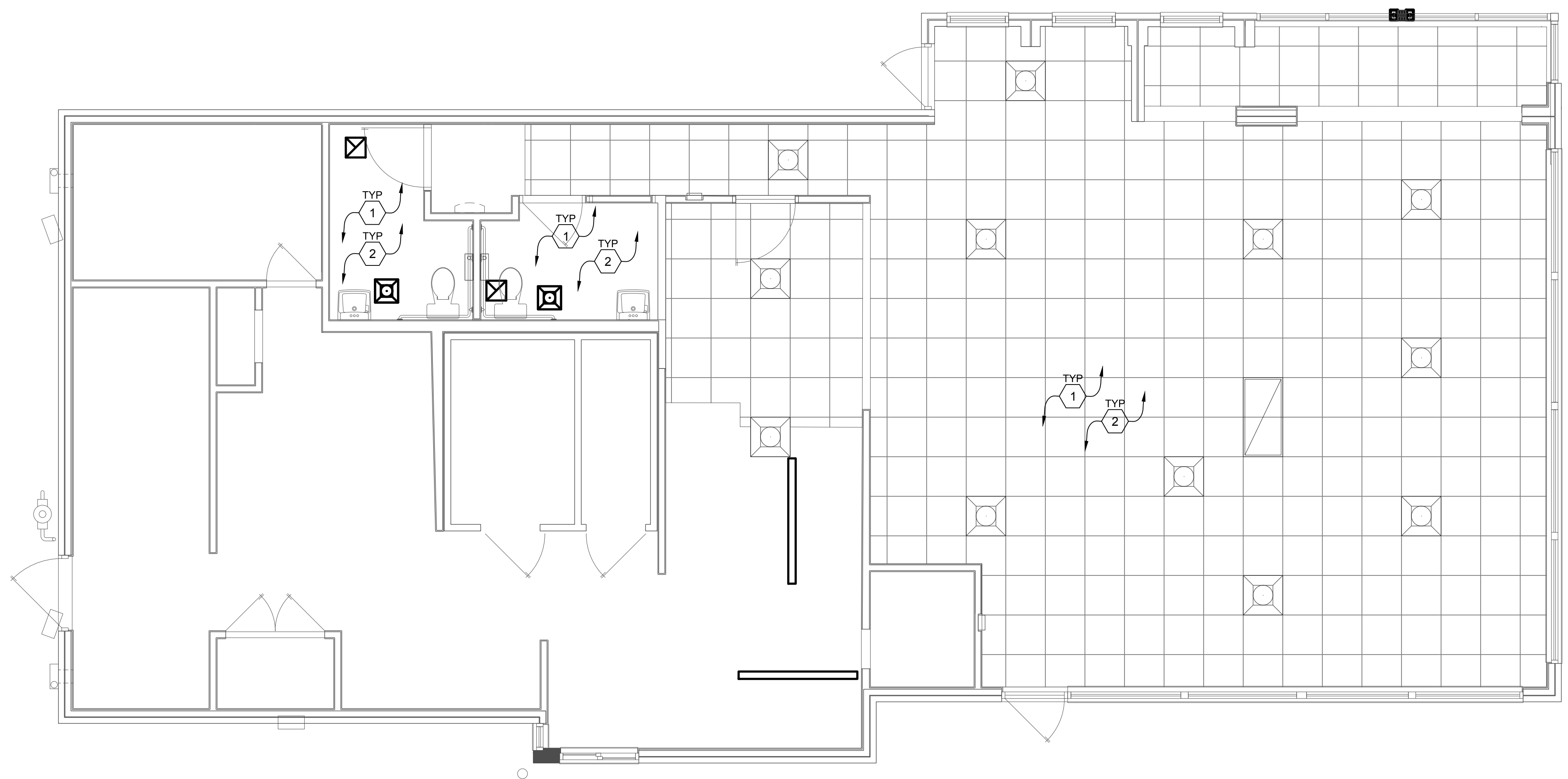
GENERAL NOTES

- PROVIDE WARRANTY TO INCLUDE LABOR AND MATERIALS TO REPAIR OR REPLACE DEFECTIVE PARTS AND MATERIALS AS REQUIRED FOR ONE YEAR AFTER SUBSTANTIAL COMPLETION OR OWNER ACCEPTANCE OF THE COMPLETED PROJECT.
- INSULATED FLEXIBLE DUCT MAY BE USED IN MAXIMUM LENGTHS OF 6'-0" PER BRANCH RUN FROM RIGID METAL DUCT TO DIFFUSER CONNECTION. FLEXIBLE DUCT SHALL BE CLASS 1 FLEXIBLE AIR DUCT WITH INSULATION AND VAPOR BARRIER.
- SPIN-IN FITTING WITH DAMPER SHALL BE FLEXAIRE RF OR METALBRE MSD. TYPICAL OF ALL BRANCH DUCT RUNS. MANUAL BALANCE DAMPERS SHALL BE IN AN ACCESSIBLE LOCATION. COORDINATE WITH GENERAL CONTRACTOR.
- DUCTWORK DIMENSIONS SHOWN ARE CLEAR INSIDE DIMENSIONS. ALL SUPPLY AND RETURN DUCTWORK SHOWN IS TO BE INSULATED WITH 2" DUCT WRAP, INCLUDING THE TOP OF THE DIFFUSERS. THE INSULATION SHALL HAVE A MINIMUM R-VALUE OF 5.
- COMPLETED INSTALLATIONS SHALL CONFORM TO ALL APPLICABLE LOCAL, STATE, AND FEDERAL CODES AND ORDINANCES INCLUDING, BUT NOT LIMITED TO THE LATEST EDITIONS OF THE FOLLOWING: STATE BUILDING CODE, NFPA-90A, NFPA-96 AND NFPA-101.
- ALL DUCTWORK IS TO BE INSTALLED PER SMACNA SPECIFICATIONS.
- ALL 90 DEGREE BENDS IN SUPPLY AIR DUCTS TO HAVE TURNING VANES.
- SEE ARCHITECTURAL REFLECTED CEILING PLAN FOR MORE INFORMATION.
- DUCTWORK TO BE RUN ABOVE THE SUSPENDED CEILING, WHENEVER POSSIBLE ALL DUCTWORK RUNNING PARALLEL TO THE ROOF JOIST SHALL BE RAISED UP AND RUN BETWEEN THE JOISTS, EXCEPT EXPOSED DUCTWORK.
- CONTRACTOR TO VISIT THE SITE PRIOR TO BID AND VERIFY ALL PERTINENT EXISTING CONDITIONS.
- ANY DAMAGES TO ANY EXISTING WALLS, FLOORS, FINISHES ETC. BY THIS CONTRACTOR ARE TO BE REPAIRED AT THIS CONTRACTOR'S EXPENSE.
- CLEAN AND REFURBISH ALL EXISTING UNITS, EXHAUST FANS, DUCT ACCESSORIES, AND CONTROLS TO LIKE NEW CONDITION.
- CLEAN AND REFURBISH ALL DUCTWORK AND DAMPERS.
- RELOCATE EXISTING THERMOSTATS/SENSORS AS NEEDED. EXTEND EXISTING WIRE AS REQUIRED. REPAIR OR REPLACE AS NECESSARY FOR A COMPLETE AND OPERATIONAL SYSTEM.
- REFURBISH RESTROOM EXHAUST FANS TO LIKE NEW CONDITION. REPAIR/REPLACE AS REQUIRED EXTEND EXISTING RESTROOM DUCTWORK AS REQUIRED FOR NEW LOCATION.
- CONTRACTOR TO RE-BALANCE ALL UNITS/HOODS/FANS SUCH THAT THE KITCHEN AREA IS NEGATIVE TO THE DINING AREA BUT THE BUILDING AS A WHOLE MAINTAINS POSITIVE PRESSURIZATION.
- G.C. TO VERIFY EXISTING ANSUL FIRE SUPPRESSION SYSTEM AT HOODS IS COMPLIANT.
- PROVIDE STENCIL LABELS ON ROOFTOP UNITS AND EXHAUST FANS. LABELS SHALL HAVE 2" HIGH LETTERS ON UNIT SIDE ACCESS PANEL. ALL EXPOSED GAS PIPING AND FITTINGS SHALL BE PAINTED WITH SAFETY YELLOW PAINT DESIGNED FOR BLACK IRON.
- CONTRACTORS AND SUB-CONTRACTORS SHALL CAREFULLY REVIEW THE CONSTRUCTION DOCUMENTS. INFORMATION REGARDING THE COMPLETE WORK IS DISPERSED THROUGHOUT THE DOCUMENT SET AND CANNOT BE ACCURATELY DETERMINED WITHOUT REFERENCE TO THE COMPLETE DOCUMENT SET.
- COORDINATE WITH THE WORK OF OTHER SECTIONS, EQUIPMENT FURNISHED BY OTHERS, REQUIREMENTS OF THE OWNER, AND WITH THE CONSTRAINTS OF THE CONDITIONS OF THE PROJECT SITE. PROVIDE DUCT RISERS AND DROPS AS REQUIRED FOR FIELD INSTALLATION AND TRADE COORDINATION. NOTIFY ARCHITECT OF ANY DISCREPANCIES BEFORE STARTING WORK.
- DRAWINGS FOR HVAC WORK ARE DIAGRAMMATIC, SHOWING THE GENERAL LOCATION, TYPE, LAYOUT, AND EQUIPMENT REQUIRED. THE DRAWINGS SHALL NOT BE SCALED FOR EXACT MEASUREMENT. REFER TO ARCHITECTURAL DRAWINGS FOR DIMENSIONS. REFER TO MANUFACTURER'S STANDARD INSTALLATION DRAWINGS FOR EQUIPMENT CONNECTIONS AND INSTALLATION REQUIREMENTS. PROVIDE DUCTWORK, CONNECTIONS, ACCESSORIES, OFFSETS, AND MATERIALS NECESSARY FOR A COMPLETE SYSTEM.

CODED NOTES

- ALL EXISTING MECHANICAL EQUIPMENT TO REMAIN UNLESS NOTED OTHERWISE. CLEAN AND REFURBISH EXISTING EQUIPMENT AND ASSOCIATED PROVISIONS TO LIKE NEW CONDITION.
- REPLACE EXISTING DIFFUSERS AND GRILLES IN THE DINING AREA, HALLWAY, AND BATHROOMS WITH NEW. MODIFY AND EXTEND EXISTING DUCTWORK AS REQUIRED FOR FULL AND COMPLETE OPERATION.

ATTENTION ALL BIDDERS
REFER TO WENDY'S APPROVED SUPPLIER LIST TO OBTAIN NATIONAL ACCOUNT PHONE NUMBERS AND CONTACTS



1 MECHANICAL PLAN
SCALE: 1/4" = 1'-0"