

**RESTROOM FIXTURE AND HARDWARE SCHEDULE**

MARK	QTY	DESCRIPTION	MODEL	FINISH	NOTES
A		SEMI-RECESSED PAPER TOWEL & WASTE RECEPTACLE	ASI 646424A (SEMI-RECESSED) PAPER ROLL AUTOMATIC DISPENSING OR BOERICK B-3914 (SEMI-RECESSED) PAPER ROLL AUTOMATIC DISPENSING	STAINLESS STEEL	
B		NEW SEMI-RECESSED HAND DRYER OPTIONAL FOR FRANCHISEE RESTAURANTS.	ASI 10-01941 SURFACE MOUNTED STAINLESS STEEL HAND DRYER		
C		TOILET PAPER DISPENSER, SURFACE MOUNTED JUMBO ROLL TOILET TISSUE DISPENSER	ASI MODEL NO. 0042	SATIN	OUTER CABINET, STAINLESS STEEL
D		COAT HOOK	BRADLEY #1/4 SATIN STAINLESS STEEL HOOK	SATIN	SEE PLAN FOR LOCATIONS
E		BABY CHANGING STATION	KOALA KARE PRODUCTS KB200-00	CREAM	REFER TO MANUFACTURER FOR INSTALLATION
F		TWO WALL TOILET COMPARTMENT GRAB BAR 1/4" DIAMETER	ASI - 3800 TYPE 5T	SATIN	STAINLESS STEEL W/ EXPOSED MOUNTING, FURNISHED COMPLETE W/ MOUNTING KIT
G		NOT USED			
H		MIRROR	MEEK M2513 24 X 36 MIRROR	SATIN	STAINLESS STEEL - ANGLE FRAMED W/ WELDED CORNERS
J		18" VERTICAL GRAB BAR	MAINLINE PB2312	SATIN	STAINLESS STEEL W/ EXPOSED MOUNTING, FURNISHED COMPLETE W/ MOUNTING KIT
K		WALL MOUNTED 'ECOLAB' HANDS-FREE SOAP DISPENSER		BLACK	SUPPLIED BY KED (G0204)
L		NOT USED			
M		NOT USED			

NOTE: REFER TO SUPPLIER SHEET FOR BUILDING MATERIAL CONSOLIDATOR CONTACT INFORMATION.

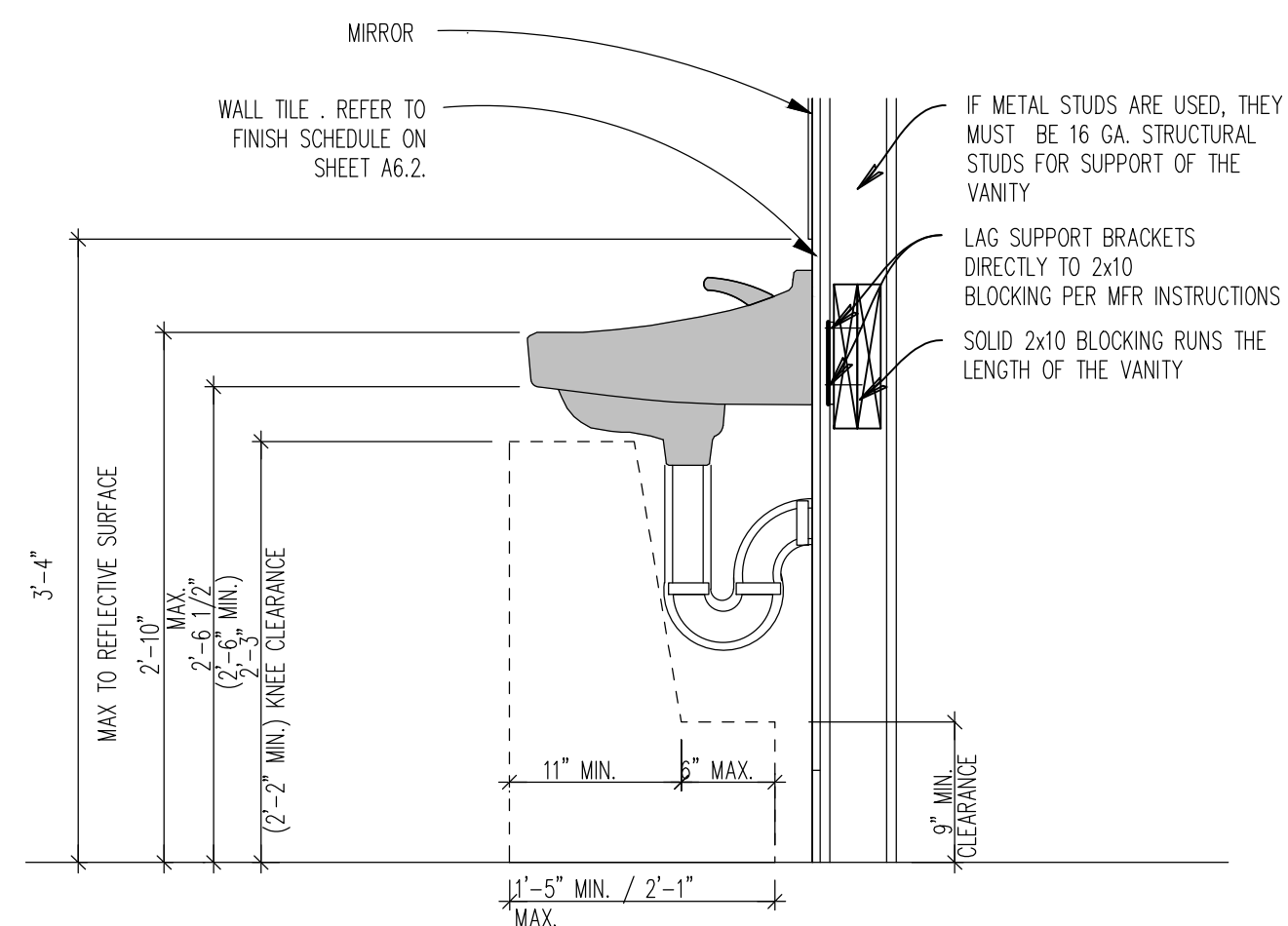
**RESTROOM SCOPE**

- REMOVE EXISTING PLUMBING FIXTURES AND RESTROOM ACCESSORIES AS REQUIRED FOR INSTALLATION OF NEW FINISHES. VERIFY W/ OWNER'S REPRESENTATIVE IF ITEMS ARE TO BE STORED AND REUSED.
- REFER TO DESIGN GUIDE FOR COMPLIANT EXISTING WALL TILE TO REMAIN.
- REMOVE EXISTING FLOOR & WALL FINISHES THROUGHOUT THE RESTROOMS, AS REQUIRED FOR NEW FINISHES. CLEAN, PREP, & REPAIR SUBSTRATES TO SPECIFICATION REQUIREMENTS OF NEW SCHEDULED FINISHES. REPLACE DAMAGED SUBSTRATES AS REQUIRED, DO NOT ADD LAYERS OF SUBSTRATE.
- REMOVE EXISTING TOILET PARTITIONS AND ASSOCIATED HARDWARE. VERIFY W/ OWNER'S REPRESENTATIVE IF ITEMS ARE TO BE STORED AND REUSED.

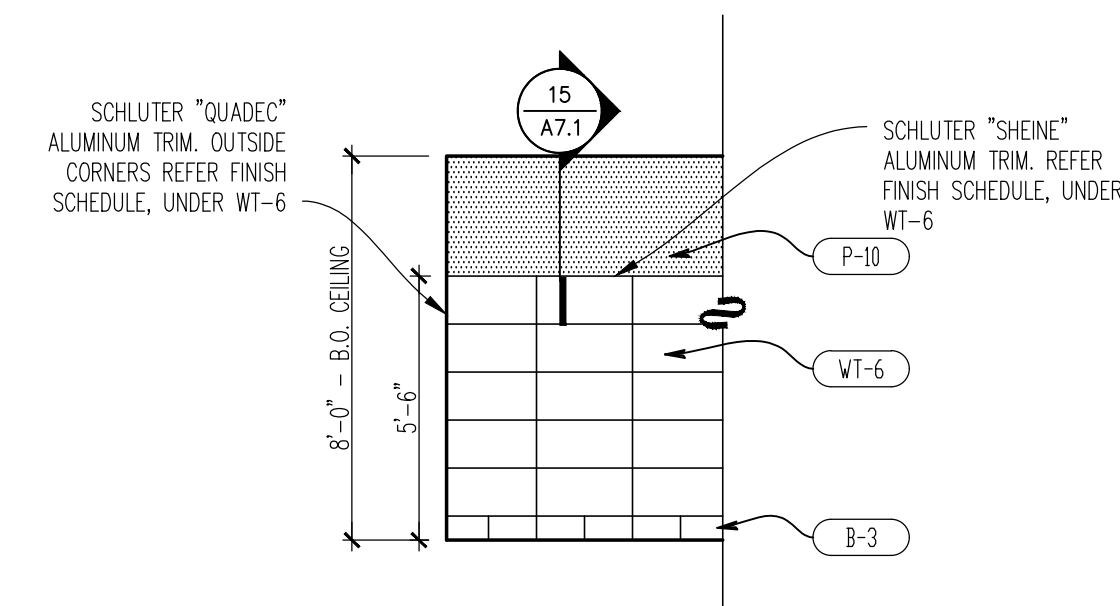
**RESTROOM ELEVATIONS GENERAL NOTES**

- FIELD VERIFY AND/OR PROVIDE ADDITIONAL REQUIREMENTS TO PROVIDE ACCESSIBILITY PER LOCAL CODE AND THE ADA STANDARDS.

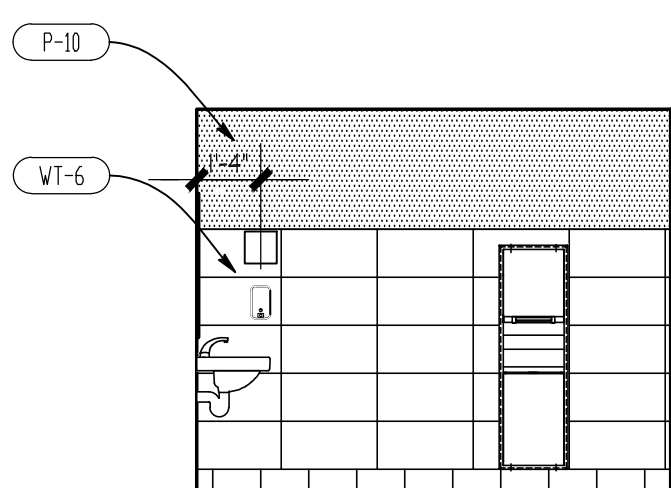
NOTE: SEE SHEET EQ1 FOR ART PACK SCHEDULE



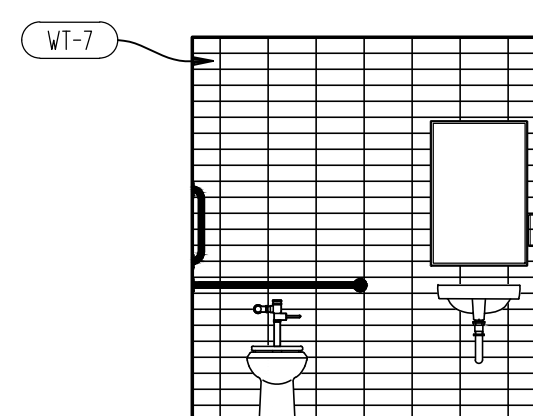
**10 TYPICAL LAVATORY SECTION**  
SCALE: 1" = 1'-0"



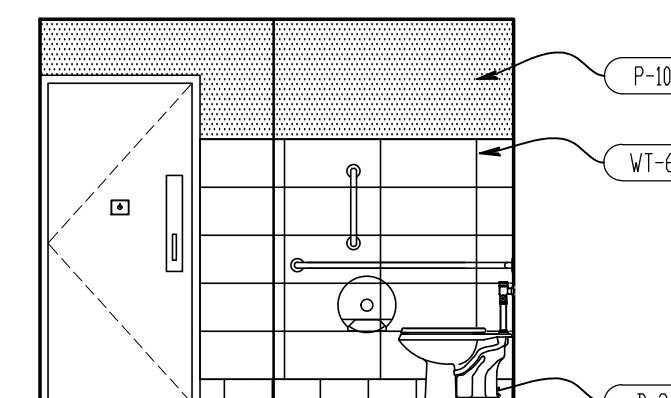
**09 TYPICAL WALL FINISHES**  
SCALE: 1/4" = 1'-0"



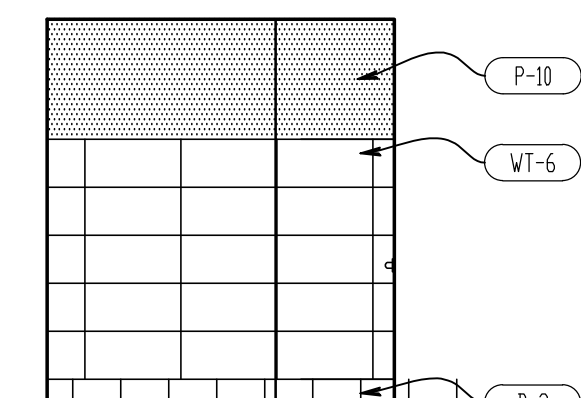
**08 WOMEN'S RR RM. 103**  
SCALE: 1/4" = 1'-0"



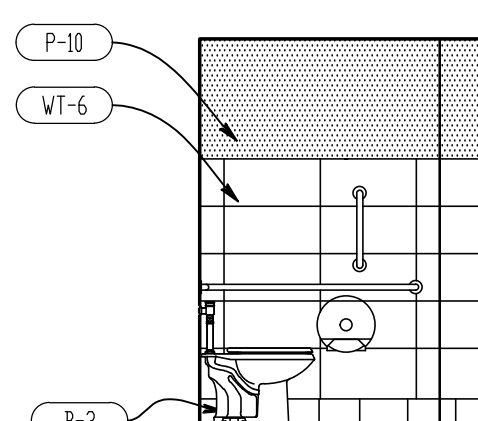
**07 WOMEN'S RR RM. 103**  
SCALE: 1/4" = 1'-0"



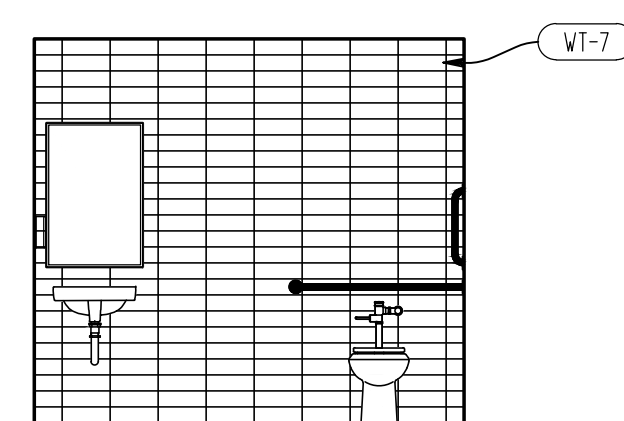
**06 WOMEN'S RR RM. 103**  
SCALE: 1/4" = 1'-0"



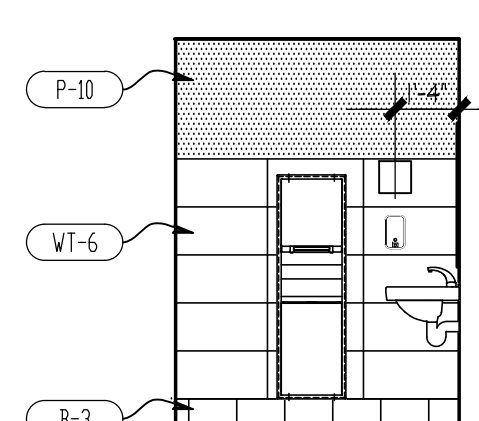
**05 WOMEN'S RR RM. 103**  
SCALE: 1/4" = 1'-0"



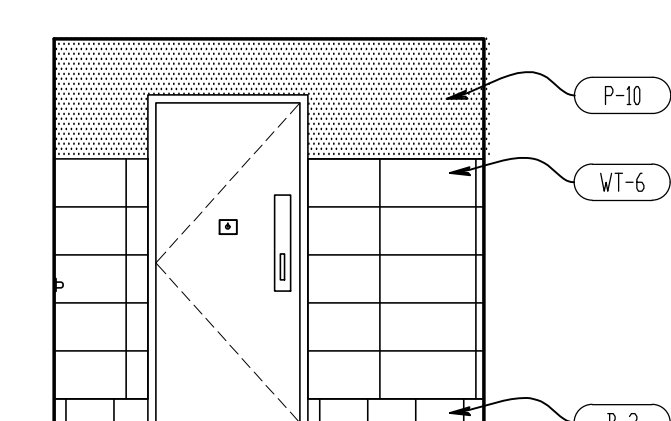
**04 MEN'S RR RM. 102**  
SCALE: 1/4" = 1'-0"



**03 MEN'S RR RM. 102**  
SCALE: 1/4" = 1'-0"



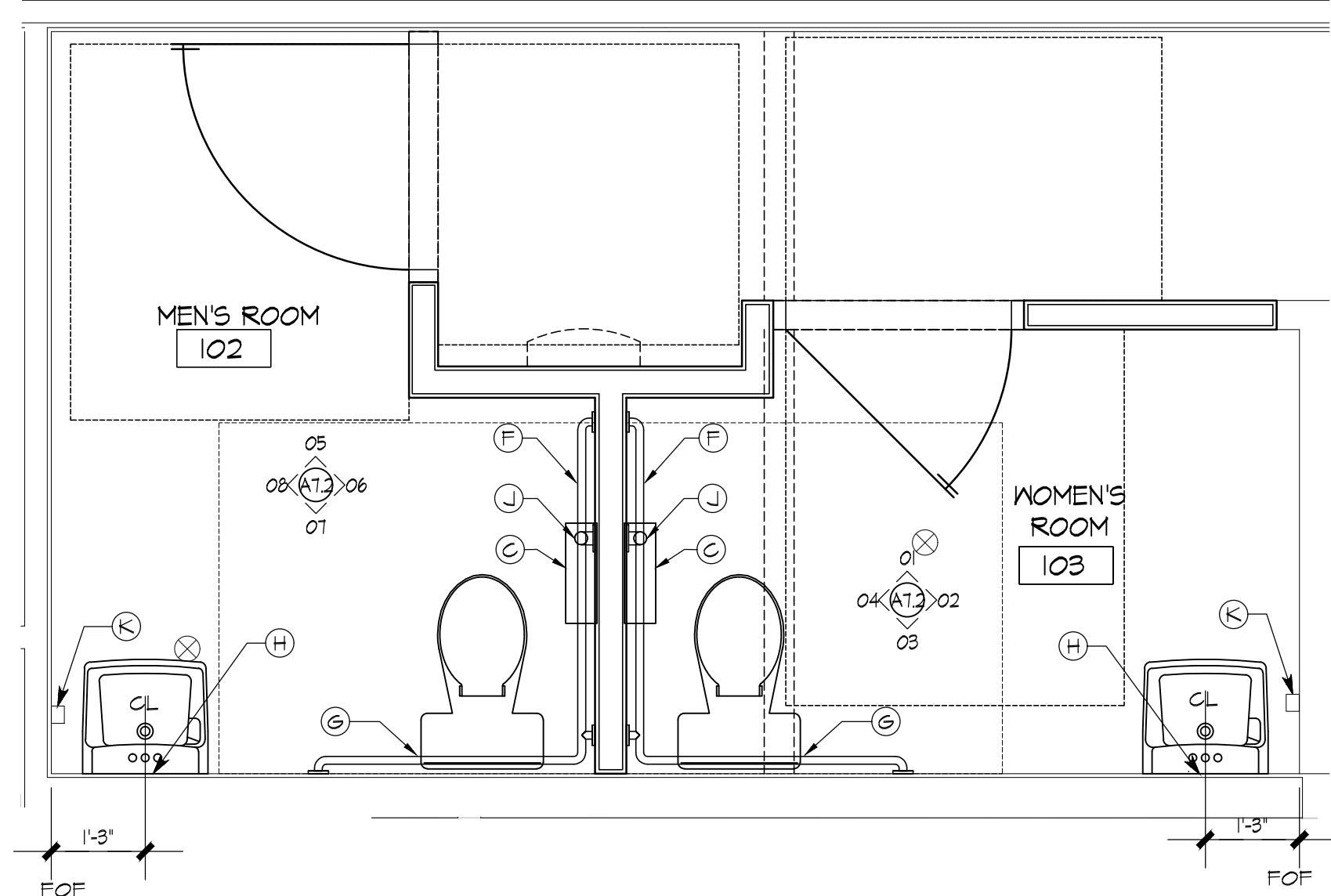
**02 MEN'S RR RM. 102**  
SCALE: 1/4" = 1'-0"



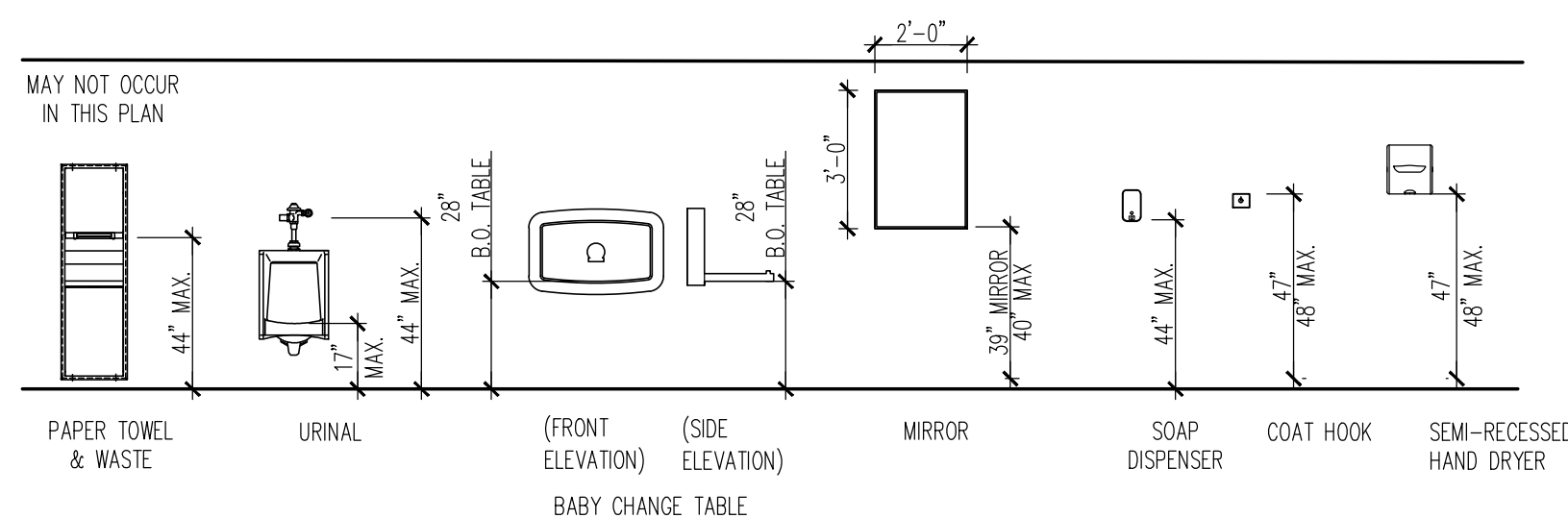
**01 MEN'S RR RM. 102**  
SCALE: 1/4" = 1'-0"

**REQUIRED RESTROOM SCOPE OF WORK**

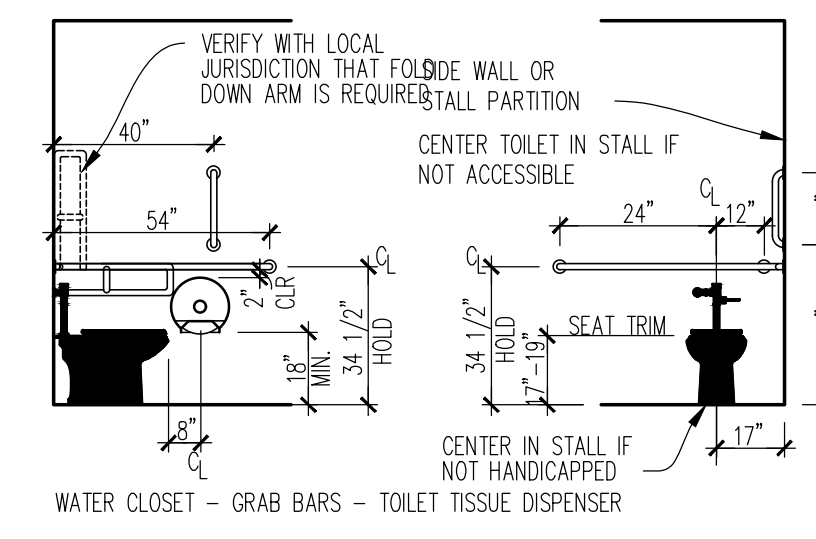
- PATCH/PAINT EXISTING CEILING
- NEW WALL TILE. REFER TO DESIGN GUIDE FOR COMPLIANT EXISTING FINISHES TO REMAIN.
- NEW FLOOR TILE
- NEW FIXTURES
- NEW SEMI-RECESSED PAPER TOWEL & WASTE RECEPTACLE. FRANCHISEE OPTION: NEW SEMI-RECESSED HAND DRYER. S.C. TO COORDINATE W/ OWNER'S REPRESENTATIVE THE DESIRED UNIT OR COMBINATION OF BOTH UNITS.
- NEW TOILET PARTITIONS & DOORS
- NEW TOILET PAPER DISPENSER
- NEW GRAB BARS



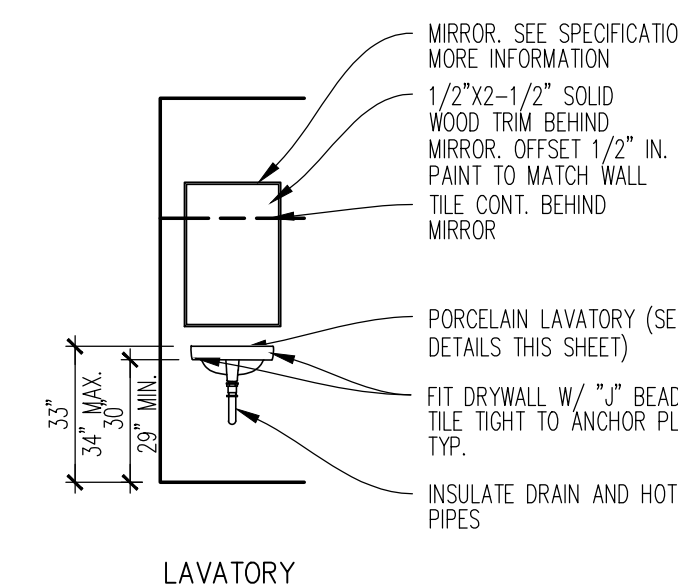
**A ENLARGED RESTROOM FLOOR PLAN**  
SCALE: 1/2" = 1'-0"



**00 TYPICAL RESTROOM ACCESSORIES**  
SCALE: NTS



NOTE CONTRACTOR TO PROVIDE 2X6 WOOD BLOCKING IN WALL FOR ANCHORAGE OF GRAB BARS AS REQUIRED.



LAVATORY

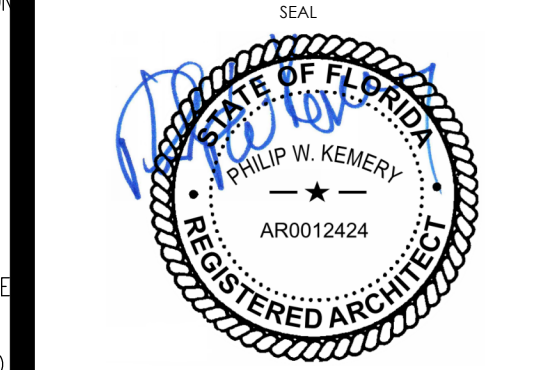
SITE NUMBER:	00495
BUILDING TYPE:	3076
ASSET TYPE:	FREESTANDING
CLASSIFICATION:	REFRESH
OWNER:	STARBOARD
BASE VERSION:	2021 SPRING
UPGRADE CLASSIFICATION:	N/A
PROJECT YEAR:	2022
DESIGN TYPE:	(2.0) UM BRIGHT
DRAWING RELEASE:	2021 SPRING

Linear Architecture LLC  
Philip Kemery,  
Architect  
4436 Harvest Hill Rd.  
Dallas, TX 75244  
PHONE: 972.929.9226



**Wendy's**  
#00495 (STARBOARD #504)  
1501 HILLSBOROUGH AVE.  
TAMPA, FL 33610

REV.	DATE	DESCRIPTION



INTERIOR ELEVATIONS  
RESTROOMS

SHEET NUMBER  
**A7.2**

18/2022, 12:24 AM, C:\Users\choc\OneDrive - Linear Architecture\Desktop\WEN00321\_103 Starboard 504\_00495 Tampa, FL (1501 Hillsborough Ave) (Rework) - Remodel\Construction Documents\103\_AZ INTERIOR ELEVATIONS.dwg, lisp