

**LIGHTING LEGEND**

○ OR ○	RECESSED OR WALL WASH CAN LIGHT FIXTURE	B1	FIXTURE SYMBOL
⊙	EXIT LIGHT FIXTURE	NL	NIGHT LIGHT
⊞	EXIT SIGN	⊞	SINGLE POLE WALL SWITCH AT 4'-6" A.F.F.
↔	WALL MOUNTED COMBO EXIT/ EMERGENCY FLOOD LIGHT	⊞(EX)	EXISTING WALL SWITCH
↔	WALL MOUNTED EMERGENCY FLOOD LIGHT	⊞OS	WALL MOUNTED OCCUPANCY SENSOR SWITCH AT 4'-6" A.F.F. LEVITON #OSD10-IDW
⊞	CEILING MOUNTED EMERGENCY FLOOD LIGHT		
⊞	CEILING SPEAKER		

**ATTENTION ALL BIDDERS**  
REFER TO WENDY'S CONSOLIDATOR LIST TO OBTAIN BUILDING MATERIAL QUOTES. REFER TO WENDY'S APPROVED SUPPLIER LIST FOR PHONE NUMBERS AND CONTACTS.

**LIGHT FIXTURE SCHEDULE**

FIXTURE TAG	DESCRIPTION	MANUFACTURER	APPROVED FIXTURE MODEL #	WATTAGE	VOLTAGE	INSTALLATION	NOTES
AH	RECESSED CAN HOUSING FOR 6" LED LIGHTS.	NORA	NHIC-17QAT	N/A	120	RECESSED	1,2
A1	LED - DOWNLIGHT, 3000K. DIRECT CONNECT LED, WHITE.	NORA	NHIC-8LMRAT	N/A	120	RECESSED	1
A2	LED - AIMABLE DOWNLIGHT, 3000K. DIRECT CONNECT LED, WHITE.	BOLT	BEBRK-LED56-BW-3-ECO	12	120		
		MAXLITE	RR61130W-L9	11	120		
		MAXLITE	RR461130W	11	120	RECESSED	
P4L	LARGE (14") BRASS GLOBE LIGHT. INTEGRAL LED, 3500K.	BOCK LIGHTING	P240-LG4W141	10	120	PENDANT	
P5	UM BRIGHT GLOBE PENDANT. INTEGRAL LED, 3500K.	ARKANSAS LIGHTING	4241P-LED	15	120	PENDANT	
		ARKANSAS LIGHTING	4240P-LED	20	120	PENDANT	

**NOTES:**  
1. WIRE ALL NIGHT LIGHT (NL) AND EMERGENCY FIXTURES AHEAD OF ANY SWITCHING ON CIRCUIT INDICATED.  
2. A19/ A21/ E26 BASES, BULBS, AND SOCKETS NOT APPROVED.

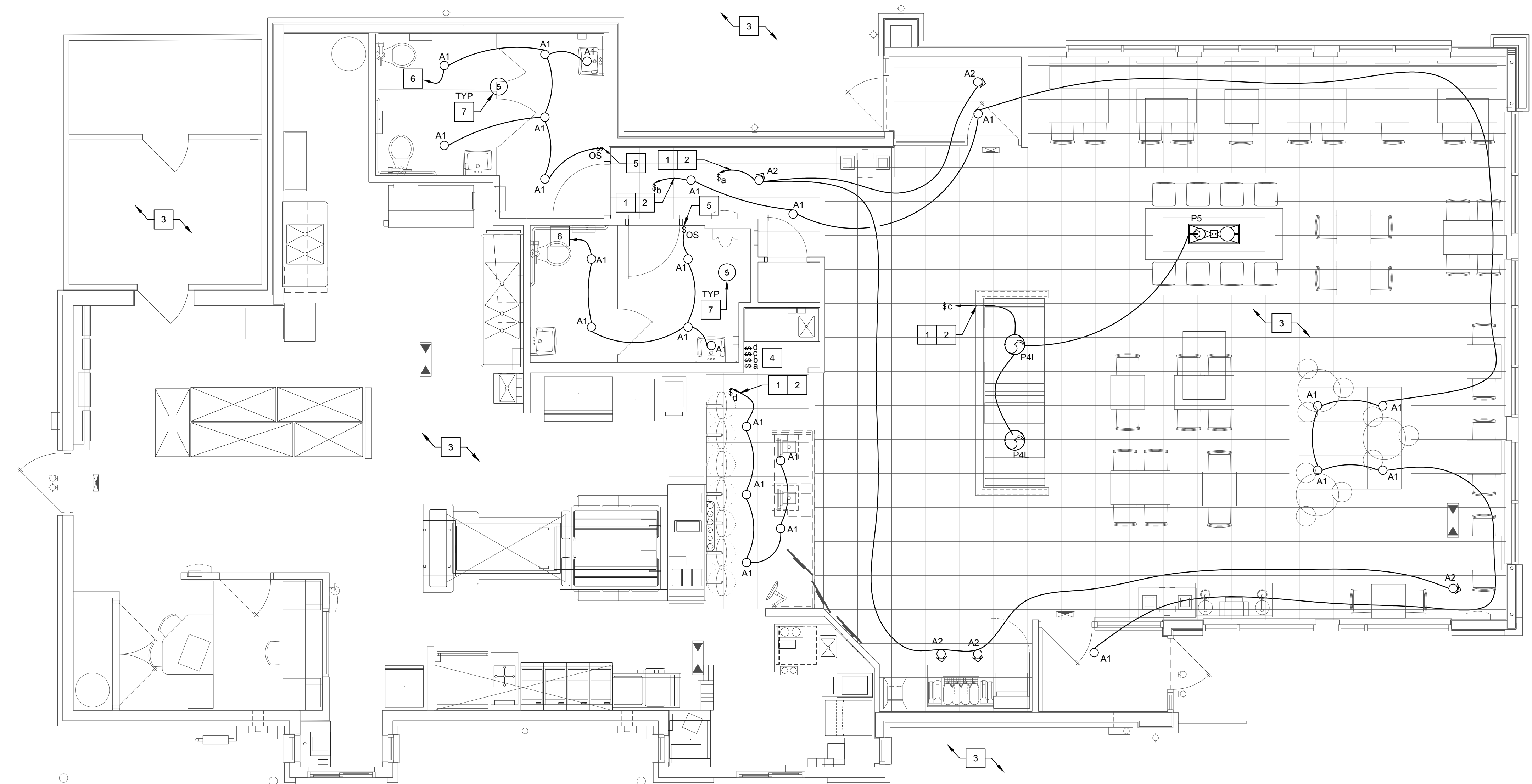
**GENERAL NOTES**

- COORDINATE WITH THE OWNER FOR ROUTING NEW EXTERIOR LIGHTING/BUILDING SIGNAGE CIRCUITS THROUGH THE EXISTING FAN AND LIGHTING CONTROL PANELS. IF NOT PRESENT IN STORE, REFER TO CODED NOTE 4, THIS SHEET.
- CLEAN AND RE-LAMP ALL EXISTING/ RELOCATED FIXTURES.
- DO NOT SCALE THESE DRAWINGS; REFER TO LARGEST SCALE ARCHITECTURAL PLANS.
- THESE DRAWINGS ARE DIAGRAMMATIC ONLY AND ARE NOT INTENDED TO SHOW MINOR DETAILS AND EXACT LOCATIONS. DESIGN ADJUSTMENTS SHALL BE ANTICIPATED BY THE CONTRACTOR TO PROVIDE A COMPLETE AND OPERATIONAL SYSTEM.
- ALL WORK SHALL BE PERFORMED IN STRICT ACCORDANCE WITH NEC/NFPA 70. CONTRACTOR SHALL NOTIFY ENGINEER REGARDING ANY CODE DISCREPANCIES SHOWN ON PLAN. ANY PERMIT OR INSPECTION FEES ARE THE RESPONSIBILITY OF THE ELECTRICAL CONTRACTOR.
- CONTRACTOR SHALL INSTALL GROUND AND BOND SYSTEM PER NEC.
- CONTRACTOR SHALL COORDINATE TELEPHONE AND DATA OUTLETS REQUIRED WITH OWNER PRIOR TO GYP BOARD BEING INSTALLED.
- CONDUCTORS SHALL BE TYPE THHN, THWN, OR THW. BRANCH CIRCUIT CONDUCTORS SHALL NOT BE SMALLER THAN #12 AWG IN 3/4" EXCEPT WHERE SPECIFICALLY NOTED OTHERWISE. HOME RUNS ORIGINATING MORE THAN 80' AT 120V FROM PANEL LOCATION SHALL BE #10 AWG MINIMUM. WIRE #10 AWG AND SMALLER SHALL BE SOLID; WIRES #8 AWG AND LARGER SHALL BE STRANDED. PROVISIONS OF WIRE COLOR CODE SECTION OF NEC SHALL BE STRICTLY COMPLIED WITH AND BE CONSISTENT THROUGHOUT ENTIRE SYSTEM.
- ALL CIRCUITS SHALL BE PROVIDED WITH AN INSULATED EQUIPMENT GROUND CONDUCTOR SIZED IN ACCORDANCE WITH NEC. RACEWAY SHALL NOT BE USED AS EQUIPMENT GROUND.
- IN ADDITION TO MECHANICAL FASTENING TO CEILING TRACK, SUPPORT LIGHT FIXTURES AT EACH CORNER INDEPENDENTLY OF SUSPENDED CEILING WITH 12 GAUGE WIRE. CONNECT TO STRUCTURAL SYSTEM OF BUILDING. INSTALLATION SHALL MEET OR EXCEED SEISMIC REQUIREMENTS OF LOCAL AND NATIONAL CODES.
- ALL CONDUIT SHALL BE CONCEALED UNLESS OTHERWISE NOTED. ALL EMPTY CONDUIT SHALL HAVE A PULL WIRE.
- ALL JUNCTION OR DEVICE BOXES SHALL HAVE A COVER.
- EACH PIECE OF ELECTRICAL GEAR, EQUIPMENT, ETC., SHALL BEAR A "UL" LABEL.
- ALL EMERGENCY AND EXIT LIGHTS SHALL BE CONNECTED TO THE CIRCUIT INDICATED IN THE PANEL SCHEDULES AHEAD OF SWITCHING OR CONTACTORS.
- PROVIDE ENGRAVED PHENOLIC LABELS ON ALL ELECTRICAL GEAR, DISCONNECTS, ETC.
- INSTALL HEAVY DUTY NEMA-1 DISCONNECTS AT ALL INTERIOR LOCATIONS INDICATED AND HEAVY DUTY NEMA-3R DISCONNECTS AT ALL EXTERIOR LOCATIONS INDICATED ON THESE DRAWINGS.
- LIGHTING SWITCHES, RECEPTACLES AND/OR DATA OUTLETS SHALL NOT BE MOUNTED BACK TO BACK IN ANY WALL.
- ELECTRICAL DEVICE MOUNTING HEIGHTS (UNO):  

PANELBOARDS	6'-6" AFF TO TOP
TOGGLE SWITCH	4'-0" AFF CENTERLINE
RECEPTACLES	1'-6" CENTERLINE
VOICE/DATA OUTLETS	1'-6" CENTERLINE
EMERGENCY LIGHTS	12" BELOW FINISHED CEILING
- PROVIDE TYPE-WRITTEN PANELBOARD SCHEDULES FOR ALL ELECTRICAL PANELBOARDS.
- ALL 120 VOLT OUTDOOR RECEPTACLES TO HAVE "WET LOCATION - IN USE" COVERS.
- ALL LIGHT FIXTURES INSTALLED IN WET LOCATIONS SHALL BE MARKED "SUITABLE FOR WET LOCATIONS".

**CODED NOTES:**

- CONNECT NEW LIGHTS TO EXISTING DINING ROOM LIGHTING CIRCUIT IN EXISTING PANEL. FIELD VERIFY LOCATION OF EXISTING CIRCUIT PRIOR TO ROUGH-IN. VERIFY THAT THE ADDITIONAL LOAD DOES NOT OVERLOAD EXISTING PANELBOARD OR ANY UPSTREAM ELECTRICAL DEVICE. IF SPARE CIRCUIT BREAKER DOES NOT EXIST, PROVIDE 20A, 120V, CIRCUIT BREAKER IN EXISTING PANELBOARD. ANY CIRCUIT BREAKERS ADDED TO EXISTING PANELBOARD SHALL BE THE SAME MAKE, MODEL, AND AIC RATING OF THE EXISTING CIRCUIT BREAKERS IN THE EXISTING PANELBOARD.
- CONTROL NEW LIGHTING IN DINING AREA VIA ASTRONOMICAL TIME CLOCK. AND SWITCH AS INDICATED IN ORDER TO COMPLY WITH LIGHT REDUCTION CONTROLS PER LOCAL ENERGY CODE. EXISTING SWITCHING AND CONTROLS MAY BE USED IF IN COMPLIANCE WITH LOCAL ENERGY CODE. IF NOT EXISTING, PROVIDE ASTRONOMICAL TIME CLOCK, LIGHTING CONTACTORS, AND ALL OTHER ACCESSORIES AS NECESSARY.
- EXISTING INTERIOR AND EXTERIOR GENERAL AND EMERGENCY LIGHTING, CIRCUITING, AND CONTROLS TO REMAIN UNLESS NOTED OTHERWISE. TEST EXISTING EMERGENCY FIXTURES BY TURNING OFF THE BRANCH CIRCUIT BREAKER TO VERIFY THAT IT PROVIDES 90 MINUTES OF EMERGENCY EGRESS ILLUMINATION IN ACCORDANCE WITH LOCAL CODE REQUIREMENTS. IF FIXTURE IS NOT FUNCTIONING PROPERLY, REPLACE BATTERY PACK, EMERGENCY BALLAST, OR ENTIRE FIXTURE TO ENSURE CODE-REQUIRED ILLUMINATION LEVELS AND EMERGENCY DURATION ARE PROVIDED. TYPICAL.
- EXISTING LIGHTING CONTROL SWITCHBANK. CONFIRM NEW SWITCH WILL FIT WITHIN THIS DESIGNATED AREA. VERIFY EXACT SWITCHBANK LOCATION WITH OWNER PRIOR TO ROUGH-IN.
- PROVIDE WALL-MOUNTED OCCUPANCY SENSOR SWITCH. DESIGN INTENT IS FOR RESTROOM LIGHTING TO AUTOMATICALLY ENERGIZE 'ON' AND 'OFF'. SET FOR 20 MINUTE TIME DELAY.
- CIRCUIT RESTROOM LIGHTING TO EXISTING RESTROOM CIRCUIT. INTERCEPT EXISTING EXHAUST FAN CIRCUITING AND CONTROL AND CONNECT TO RESTROOM LIGHTING AND CONTROLS.
- NEW SPEAKER UNLESS ALREADY PRESENT. COORDINATE REQUIREMENTS.



SITE NUMBER:	08114
BUILDING TYPE:	E2000
ASSET TYPE:	FREESTANDING
CLASSIFICATION:	REFRESH
OWNER:	STARBOARD
BASE VERSION:	2021 SUMMER
UPGRADE CLASSIFICATION:	
	N/A
PROJECT YEAR:	2022
DESIGN TYPE:	(2.0) UM BRIGHT
DRAWING RELEASE:	2021 SPRING

CONTRACTOR SHALL VERIFY ALL DIMENSIONS AT THE JOB SITE AND NOTIFY THE ARCHITECTS OF ANY DIMENSIONAL ERRORS, OMISSIONS OR DISCREPANCIES BEFORE BEGINNING OR FABRICATING ANY WORK DO NOT SCALE DRAWINGS

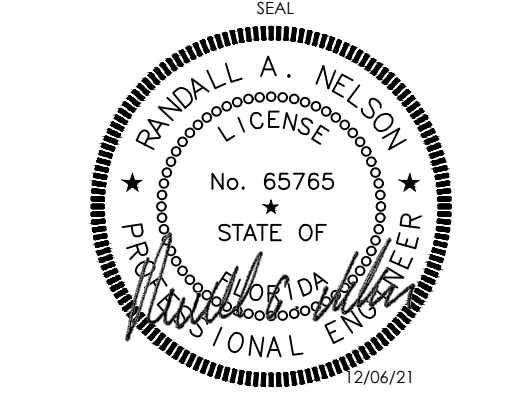


STARBOARD GROUP  
12540 W. ATLANTIC BLVD.  
CORAL SPRINGS, FL 33071  
OFFICE: (954)255-2266

**Wendy's**  
#08558 (STARBOARD #472)  
8440 ASTRONAUT BLVD.  
CAPE CANAVERAL, FL

REV.	DATE	DESCRIPTION

ISSUE DATE: 12/06/2021  
PROJECT NUMBER: 2120443  
DRAWN BY: MS/BS  
CHECKED BY: AR/CF



SHEET NAME  
**LIGHTING PLAN**

SHEET NUMBER  
**E1.1**

**1 LIGHTING PLAN**  
SCALE: 1/4" = 1'-0"

12/06/2021 4:30 PM C:\Wendy's - Lines\2120443 Wendy's - Cape Canaveral - E1\Sheet\E1.1 LIGHTING PLAN.dwg mnsalr/gh