

SITE NUMBER:	08114
BUILDING TYPE:	E2000
ASSET TYPE:	FREESTANDING
CLASSIFICATION:	REFRESH
OWNER:	STARBOARD
BASE VERSION:	2021 SUMMER
UPGRADE CLASSIFICATION:	N/A
PROJECT YEAR:	2022
DESIGN TYPE:	(2.0) UM BRIGHT
DRAWING RELEASE:	2021 SPRING

CONTRACTOR SHALL VERIFY ALL DIMENSIONS AT THE JOB SITE AND NOTIFY THE ARCHITECTS OF ANY DIMENSIONAL ERRORS, OMISSIONS OR DISCREPANCIES BEFORE BEGINNING OR FABRICATING ANY WORK DO NOT SCALE DRAWINGS

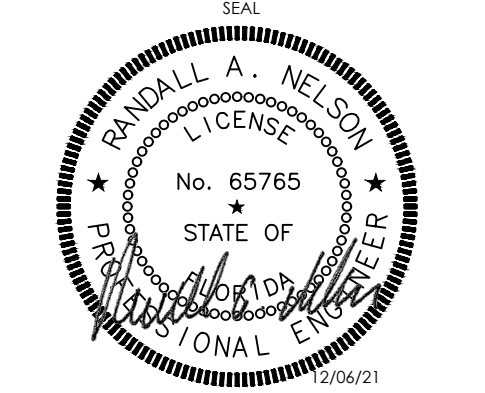


STARBOARD GROUP
12540 W. ATLANTIC BLVD.
CORAL SPRINGS, FL 33071
OFFICE: (954)255-2266

Wendy's
#08558 (STARBOARD #472)
8440 ASTRONAUT BLVD.
CAPE CANAVERAL, FL

REV.	DATE	DESCRIPTION

ISSUE DATE: 12/06/2021
PROJECT NUMBER: 2120443
DRAWN BY: MS/BS
CHECKED BY: AR/CF



SHEET NAME
MECHANICAL PLAN

SHEET NUMBER

M1.1

GENERAL NOTES

- PROVIDE WARRANTY TO INCLUDE LABOR AND MATERIALS TO REPAIR OR REPLACE DEFECTIVE PARTS AND MATERIALS AS REQUIRED FOR ONE YEAR AFTER SUBSTANTIAL COMPLETION OR OWNER ACCEPTANCE OF THE COMPLETED PROJECT.
- INSULATED FLEXIBLE DUCT MAY BE USED IN MAXIMUM LENGTHS OF 5'-0" PER BRANCH RUN. FROM RIGID METAL DUCT TO DIFFUSER CONNECTION. FLEXIBLE DUCT SHALL BE CLASS 1 FLEXIBLE AIR DUCT WITH INSULATION AND VAPOR BARRIER.
- SPIN-IN FITTING WITH DAMPER SHALL BE FLEXAIRE RF OR METALBRE MBS. TYPICAL OF ALL BRANCH DUCT RUNS. MANUAL BALANCE DAMPERS SHALL BE IN AN ACCESSIBLE LOCATION. COORDINATE WITH GENERAL CONTRACTOR.
- DUCTWORK DIMENSIONS SHOWN ARE CLEAR INSIDE DIMENSIONS. ALL SUPPLY AND RETURN DUCTWORK SHOWN IS TO BE INSULATED WITH 2" DUCT WRAP, INCLUDING THE TOP OF THE DIFFUSERS. THE INSULATION SHALL HAVE A MINIMUM R-VALUE OF 5.
- COMPLETED INSTALLATIONS SHALL CONFORM TO ALL APPLICABLE LOCAL, STATE, AND FEDERAL CODES AND ORDINANCES INCLUDING, BUT NOT LIMITED TO THE LATEST EDITIONS OF THE FOLLOWING: STATE BUILDING CODE, NFPA-90A, NFPA-96 AND NFPA-101.
- ALL DUCTWORK IS TO BE INSTALLED PER SMACNA SPECIFICATIONS.
- ALL 90 DEGREE BENDS IN SUPPLY AIR DUCTS TO HAVE TURNING VANES.
- SEE ARCHITECTURAL REFLECTED CEILING PLAN FOR MORE INFORMATION.
- DUCTWORK TO BE RUN ABOVE THE SUSPENDED CEILING. WHENEVER POSSIBLE ALL DUCTWORK RUNNING PARALLEL TO THE ROOF JOIST SHALL BE RAISED UP AND RUN BETWEEN THE JOISTS, EXCEPT EXPOSED DUCTWORK.
- CONTRACTOR TO VISIT THE SITE PRIOR TO BID AND VERIFY ALL PERTINENT EXISTING CONDITIONS.
- ANY DAMAGES TO ANY EXISTING WALLS, FLOORS, FINISHES ETC. BY THIS CONTRACTOR ARE TO BE REPAIRED AT THIS CONTRACTOR'S EXPENSE.
- CLEAN AND REFURBISH ALL EXISTING UNITS, EXHAUST FANS, DUCT ACCESSORIES, AND CONTROLS TO LIKE NEW CONDITION.
- CLEAN AND REFURBISH ALL DUCTWORK AND DAMPERS.
- RELOCATE EXISTING THERMOSTATS/SENSORS AS NEEDED. EXTEND EXISTING WIRE AS REQUIRED. REPAIR OR REPLACE AS NECESSARY FOR A COMPLETE AND OPERATIONAL SYSTEM.
- REFURBISH RESTROOM EXHAUST FANS TO LIKE NEW CONDITION. REPAIR/REPLACE AS REQUIRED EXTEND EXISTING RESTROOM DUCTWORK AS REQUIRED FOR NEW LOCATION.
- CONTRACTOR TO RE-BALANCE ALL UNITS/HOODS/FANS SUCH THAT THE KITCHEN AREA IS NEGATIVE TO THE DINING AREA BUT THE BUILDING AS A WHOLE MAINTAINS POSITIVE PRESSURIZATION.
- G.C. TO VERIFY EXISTING ANSUL FIRE SUPPRESSION SYSTEM AT HOODS IS COMPLIANT.
- PROVIDE STENCIL LABELS ON ROOFTOP UNITS AND EXHAUST FANS. LABELS SHALL HAVE 2" HIGH LETTERS ON UNIT SIDE ACCESS PANEL. ALL EXPOSED GAS PIPING AND FITTINGS SHALL BE PAINTED WITH SAFETY YELLOW PAINT DESIGNED FOR BLACK IRON.
- CONTRACTORS AND SUB-CONTRACTORS SHALL CAREFULLY REVIEW THE CONSTRUCTION DOCUMENTS. INFORMATION REGARDING THE COMPLETE WORK IS DISPERSED THROUGHOUT THE DOCUMENT SET AND CANNOT BE ACCURATELY DETERMINED WITHOUT REFERENCE TO THE COMPLETE DOCUMENT SET.
- COORDINATE WITH THE WORK OF OTHER SECTIONS. EQUIPMENT FURNISHED BY OTHERS. REQUIREMENTS OF THE OWNER, AND WITH THE CONSTRAINTS OF THE CONDITIONS OF THE PROJECT SITE. PROVIDE DUCT RISERS AND DROPS AS REQUIRED FOR FIELD INSTALLATION AND TRADE COORDINATION. NOTIFY ARCHITECT OF ANY DISCREPANCIES BEFORE STARTING WORK.
- DRAWINGS FOR HVAC WORK ARE DIAGRAMMATIC, SHOWING THE GENERAL LOCATION, TYPE, LAYOUT, AND EQUIPMENT REQUIRED. THE DRAWINGS SHALL NOT BE SCALED FOR EXACT MEASUREMENT. REFER TO ARCHITECTURAL DRAWINGS FOR DIMENSIONS. REFER TO MANUFACTURER'S STANDARD INSTALLATION DRAWINGS FOR EQUIPMENT CONNECTIONS AND INSTALLATION REQUIREMENTS. PROVIDE DUCTWORK, CONNECTIONS, ACCESSORIES, OFFSETS, AND MATERIALS NECESSARY FOR A COMPLETE SYSTEM.

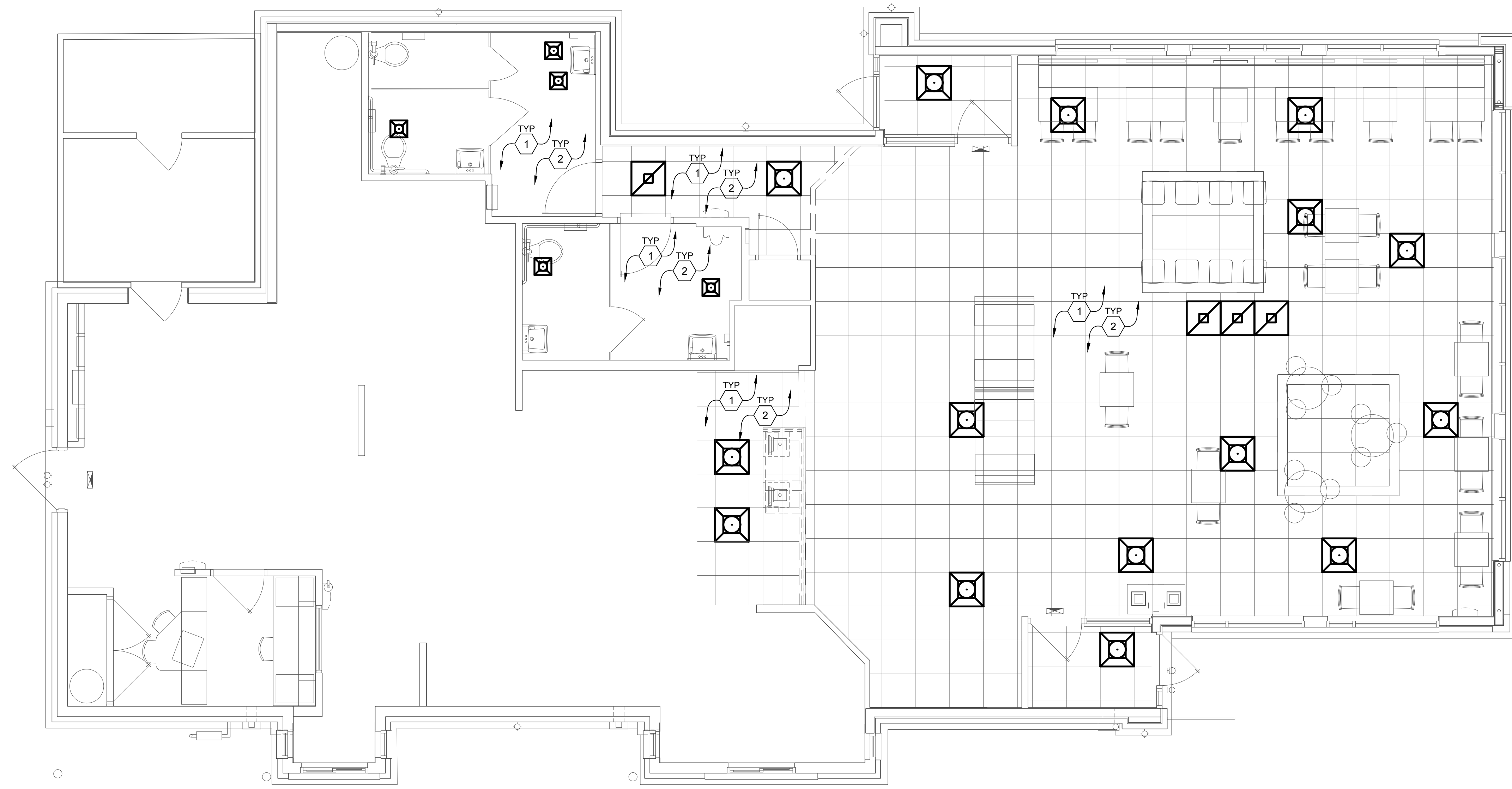
CODED NOTES

- ALL EXISTING MECHANICAL EQUIPMENT TO REMAIN UNLESS NOTED OTHERWISE. CLEAN AND REFURBISH EXISTING EQUIPMENT AND ASSOCIATED PROVISIONS TO LIKE NEW CONDITION.
- REPLACE EXISTING DIFFUSERS AND GRILLES IN THE DINING AREA, HALLWAY, AND BATHROOM WITH NEW. MODIFY AND EXTEND EXISTING DUCTWORK AS REQUIRED FOR FULL AND COMPLETE OPERATION.

ATTENTION ALL BIDDERS
REFER TO WENDY'S APPROVED SUPPLIER LIST TO OBTAIN NATIONAL ACCOUNT PHONE NUMBERS AND CONTACTS

MECHANICAL LEGEND			
SYMBOL	DESCRIPTION	SYMBOL	DESCRIPTION
	DIFFUSER		EQUIPMENT MARK
	RETURN AIR GRILLE		EQUIPMENT NUMBER
	RETURN OR EXHAUST DUCT UP		INDICATES DETAIL, PLAN, SECTION, AND/OR DIAGRAM (APPLIES ONLY WHERE INDICATED ON DRAWINGS)
	SUPPLY DUCT UP		INDICATES DRAWING ON WHICH DETAIL APPEARS
	SUPPLY DUCT DOWN		INDICATES TYPICAL DETAIL (APPLIES TO ALL CONTRACT DRAWINGS)
	RETURN OR EXHAUST DUCT DOWN		INDICATES DRAWING ON WHICH DETAIL APPEARS
	ROUND DUCT DOWN		INDICATES SECTION NUMBER
	ROUND DUCT UP		INDICATES ON WHICH DRAWING SECTION APPEARS
	ROUND DUCT UP		INDICATES REVISION & NUMBER
	VANED ELBOW		CONNECT NEW TO EXISTING
	LOW PRESSURE FLEX DUCT		SHEET NOTE NUMBER
	45° TAKEOFF FITTING		MARK NECK SIZE
	MANUAL VOLUME DAMPER		CFM
			THERMOSTAT
			SENSOR
			DOOR UNDERCUT

ABBREVIATIONS	
AFF	ABOVE FINISHED FLOOR
BTU	BRITISH THERMAL UNIT
CFM	CUBIC FEET PER MINUTE
COMP	COMPRESSOR
DB	DRY BULB
DN	DOWN
DX	DIRECT EXPANSION
EA	EACH
EAT	ENTERING AIR TEMPERATURE
EFF	EFFICIENCY
ESP	EXTERNAL STATIC PRESSURE
ETC	AND SO FORTH
ETR	EXISTING TO REMAIN
EX	EXHAUST
°F	DEGREES FAHRENHEIT
FLA	FULL LOAD AMPS
FPM	FEET PER MINUTE
FT	FEET
GPM	GALLONS PER MINUTE
GRS/LB	GRAINS PER POUND
HP	HORSEPOWER
HZ	HERTZ
IN	INCHES
KW	KILOWATT
MBH	THOUSANDS OF BTU PER HOUR
MIN	MINIMUM
NEG	NEGATIVE
NTS	NOT TO SCALE
OA	OUTSIDE AIR
OBD	OPPOSED BLADE DAMPER
OC	ON CENTER
PH	PHASE
PSI	POUNDS PER SQUARE INCH
RH	RELATIVE HUMIDITY
SA	SUPPLY AIR
SH	SENSIBLE HEAT
SP	STATIC PRESSURE
TEMP	TEMPERATURE
TYP	TYPICAL
UC	UNDERCUT
VOLT	VOLTAGE
W/O	WITHOUT
WB	WET BULB
WC	WATER COLUMN



MECHANICAL PLAN
SCALE: 1/4" = 1'-0"

12/06/2021 4:17 PM © Wendy's - Linear 220443 Wendy's - Cape Canaveral - E:\Shed\08114 - MECHANICAL - PLAN.dwg, mshel@shg.com