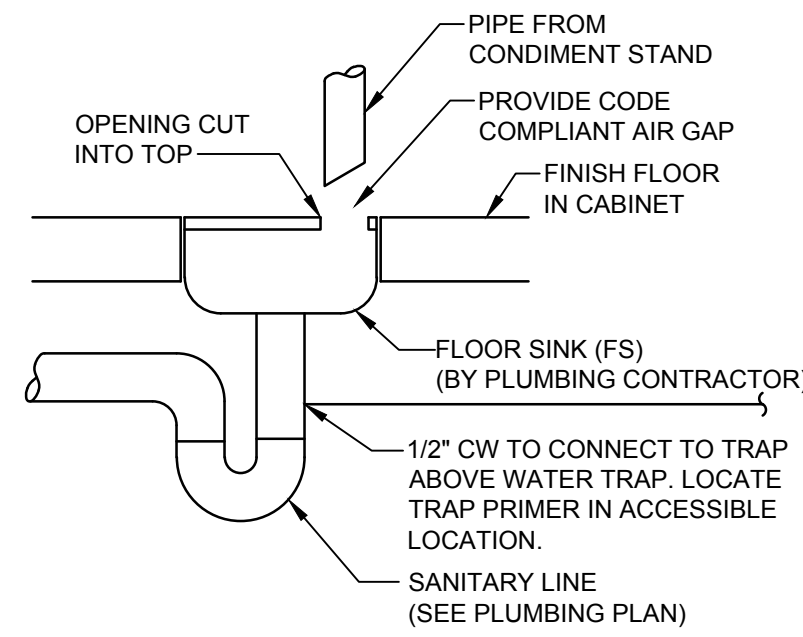


12/28/2021, 4:17 PM, C:\Wendys\Linear\2120443 Wendy's - Cape Canaveral, FL\Sheets\P1.1 PLUMBING PLAN.dwg, mmslimg



2 INDIRECT DRAIN DETAIL
NO SCALE

PLUMBING FIXTURE SCHEDULE						
SYMBOL	FIXTURE TYPE	MANUF.	MODEL	DESCRIPTION	ACCESSORIES/OPTIONS	NOTES (#)
WC	WATER CLOSET (ACCESSIBLE)	SLOAN	ST-2029 (2102029)	FLOOR MOUNT, WHITE VITREOUS CHINA, 1.1-1.6 GPF ELONGATED SIPHON JET BOWL, 1-1/2" TOP SPUD, & RIM HEIGHT 17" A.F.F.	TOTO #TET1LA32#CP-W 1.28 GPF ECOPOWER SENSOR WATER CLOSET FLUSH VALVE, MAINLINE #ML1055SSC00 WHITE OPEN FRONT ELONGATED TOILET SEAT LESS COVER.	(1), (5)
LAV	LAVATORY (ACCESSIBLE)	AMERICAN STANDARD	#0356.921.020 LUCERNE	WALL HUNG, 20"x18 1/2", WHITE VITREOUS CHINA.	TOTO #TEL105-D10E POLISHED CHROME, SINGLE HOLE, ECOPOWER DECK MOUNTED FAUCET WITH 0.86GPC DISCHARGE (10 SECOND CYCLE).	(1), (2), (3), (5)
UR	URINAL (ACCESSIBLE)	SLOAN	SU-1009A	WALL HUNG URINAL, WHITE VITREOUS CHINA.	SLOAN #SU-1009A (1101009) 0.125-0.5 GPF URINAL ADA, TOTO #TEU1UA12#CP 0.125 GPF URINAL FLUSH VALVE.	(1), (4), (5)
MV	MIXING VALVE	ZURN	ZW3870XL / ZW1070XL	THERMOSTATIC CONTROLLER WITH INTEGRAL CHECKS, ALL BRASS BODY WITH DUAL STAINLESS STEEL STRAINER, VANDAL RESISTANT TEMPERATURE ADJUSTMENT HANDLE.	SET TO 105°F. MOUNT IN ACCESSIBLE LOCATION.	(5)
FS	FLOOR SINK	SIOUX CHIEF / ZURN	#861-23X-N2 / #Z1900-3NH-2NB	12" SQUARE TOP FLOOR SINK WITH 6" DEEP ACID RESISTANT ENAMEL CAST IRON BODY AND 3" OUTLET WITH 1/2" NICKEL BRONZE GRATE.	SET FLOOR SINK LEVEL WITH FINISH FLOOR.	(5)
FD	FLOOR DRAIN	SIOUX CHIEF / ZURN	832-35D-NR / #Z1415-B-3NH	FLOOR DRAIN WITH 5" ROUND NICKEL BRONZE ADJUSTABLE STRAINER AND CAST IRON BODY & 3" BOTTOM OUTLET.	PROVIDE WITH ASSE 1072 APPROVED TRAP SEAL DEVICE. TRAP SEAL DEVICE SHALL BE TRAP PROSET TRAPGUARD OR APPROVED EQUAL. INSTALL PER MANUFACTURER'S RECOMMENDATIONS. PROVIDE DRAINS IN CUSTOMER AREAS WITH VANDAL RESISTANT SCREWS.	(5)
FCO	FLOOR CLEANOUT	SIOUX CHIEF / ZURN	834-4DNR / Z1400-BZ1	REFER TO PLAN FOR CLEANOUT SIZE. PROVIDE WITH NICKEL BRONZE TOP.	NO-HUB CONNECTION. PROVIDE CLEANOUTS IN CUSTOMER AREAS WITH VANDAL RESISTANT SCREWS.	

NOTES:

- INSTALL IN ACCORDANCE TO ADA ACCESSIBILITY REQUIREMENTS.
- PROVIDE WITH QUARTER TURN BRASS ANGLE COMPRESSION STOPS WITH LOOSE KEY HANDLES, STAINLESS BRAIDED SUPPLIES, CHROME SUPPLY AND DRAIN ESCUTCHEONS, CHROME GRID STRAINER DRAIN WITH TAILPIECE, CHROME PLATED CAST BODY P-TRAP WITH CLEANOUT AND MIXING VALVE (MV). INSULATE WASTE AND WATER PIPING WITH TRUEBOG "LAV-GUARD2" #101-EZ.
- FURNISH WITH ZURN #Z-1231-81 LAVATORY CARRIER.
- FURNISH WITH ZURN #Z-1222 URINAL CARRIER.
- REFER TO ARCHITECTURAL SUPPLIER PAGE FOR WENDY'S NATIONAL VENDOR PRICING CONTACTS. VERIFY PRIOR TO BID IF GENERAL CONTRACTOR OR OWNER WILL PROVIDE EQUIPMENT.

PLUMBING & EQUIPMENT SCHEDULE												
SYMBOL	QUANTITY	GENERAL FIXTURE DESCRIPTION	DOMESTIC WATER			SANITARY			REMARKS			
			FILTERED WATER	COLD WATER	HOT WATER (101°)	DRAIN LINE SIZE	TRAP	FIXTURE DRAIN		DIRECT/INDIRECT VENT	MOUNTING HEIGHT	
WC	3	WATER CLOSET (ACCESSIBLE)	1"			4"	INT	4"	D	2"	FL	(1),(3),(6),(7)
LAV	4	LAVATORY	1/2"	1/2"		1 1/2"	1 1/2"	D	1 1/2"			(1),(3),(6),(7)
UR	1	URINAL	1/2"			2"	INT	2"	D	1 1/2"		(1),(3),(6),(7)

REMARKS (#)

- THIS EQUIPMENT FURNISHED BY PLUMBING CONTRACTOR.
- THIS EQUIPMENT FURNISHED BY OTHERS.
- PROVIDE VALVE AT EACH CONNECTION TO EQUIPMENT.
- INDIRECT TO HUB DRAIN.
- PROVIDE WITH BACKFLOW PREVENTER. COORDINATE BACKFLOW INSTALLATION WITH KITCHEN EQUIPMENT PROVIDER AND BEVERAGE INSTALLER.
- NEW FIXTURES CONNECTED TO EXISTING WATER LINES AND DRAINAGE SYSTEM IF REPLACED.
- REFER TO PLUMBING FIXTURE INFORMATION ON THIS SHEET.
- REFER TO MANUFACTURER'S INSTALLATION INSTRUCTIONS.
- VERIFY DIRECT OR INDIRECT WASTE CONNECTION PER LOCAL CODE REQUIREMENTS.
- VERIFY SANITARY OR GREASE WASTE CONNECTION PER LOCAL CODE REQUIREMENTS.
- FINAL CONNECTION TO EQUIPMENT BY OTHERS.
- SHUTOFF VALVE AND FLEX CONNECTOR LINES TO PRE-RINSE ARE PROVIDED WITH FIXTURE.

- # CODED NOTES:**
- FOR NEW CONDIMENT STAND INSTALLED, NEW INDIRECT DRAIN LOCATION WILL ACCOMMODATE ANY FREESTYLE DRINK DISPENSER CONFIGURATION. SEE FLOOR HUB DRAIN DETAIL ON THIS SHEET AND WENDY'S DRAIN INSTALLATION MANUAL.
 - CONNECT TO NEAREST EXISTING PIPING OF ADEQUATE SIZE AND CAPACITY. COORDINATE LOCATION, SIZE AND DIRECTION OF EXISTING SANITARY MAIN PRIOR TO ROUGH-IN.
 - BEVERAGE EQUIPMENT INSTALLER TO EXTEND CARBON/SYRUP LINES TO EXISTING BAG-IN-BOX SYSTEM. COORDINATE LOCATION OF BAG-IN-BOX EQUIPMENT WITH OWNER PRIOR TO ROUGH-IN.
 - PROVIDE NEW FD UNDER COUNTER FOR NEW ICE BIN. CONNECT TO EXISTING PIPING OF ADEQUATE SIZE AND CAPACITY. COORDINATE LOCATION, SIZE AND DIRECTION OF EXISTING SANITARY MAIN PRIOR TO ROUGH-IN. EXISTING FLOOR DRAIN MAY BE REUSED IF FOUND TO BE IN GOOD WORKING CONDITION. ICE BIN DISCHARGE TO BE ROUTED WITH PVC BELOW EQUIPMENT TO EXISTING DRAIN LOCATION AS REQUIRED.
 - CONNECT 3/4" TO EXISTING FILTER WATER SYSTEM. FIELD VERIFY NEAREST POINT OF CONNECTION. FILTERED WATER SYSTEM MODIFICATION BY BEVERAGE EQUIPMENT INSTALLER.
 - PLUMBING FIXTURE TO BE REPLACED WITH NEW PER SCHEDULE. EXISTING FIXTURES TO BE REMOVED FOR ROOM REFINISH AND NEW FIXTURES INSTALLED IN SAME LOCATIONS AFTER WORK IS COMPLETE.
 - BEVERAGE EQUIPMENT INSTALLER TO RUN AND CONNECT ALL FILTER WATER AND SYRUP LINES TO NEW FREESTYLE STATION AND ICE MACHINE. FIELD VERIFY NEAREST POINT OF CONNECTION. BEVERAGE EQUIPMENT INSTALLER TO PROVIDE BOOSTER PUMP SYSTEM WHERE FILTERED WATER PRESSURE IS BELOW RECOMMENDED PSI. CO² LINES TO BE PROVIDED BY CO² SUPPLIER.

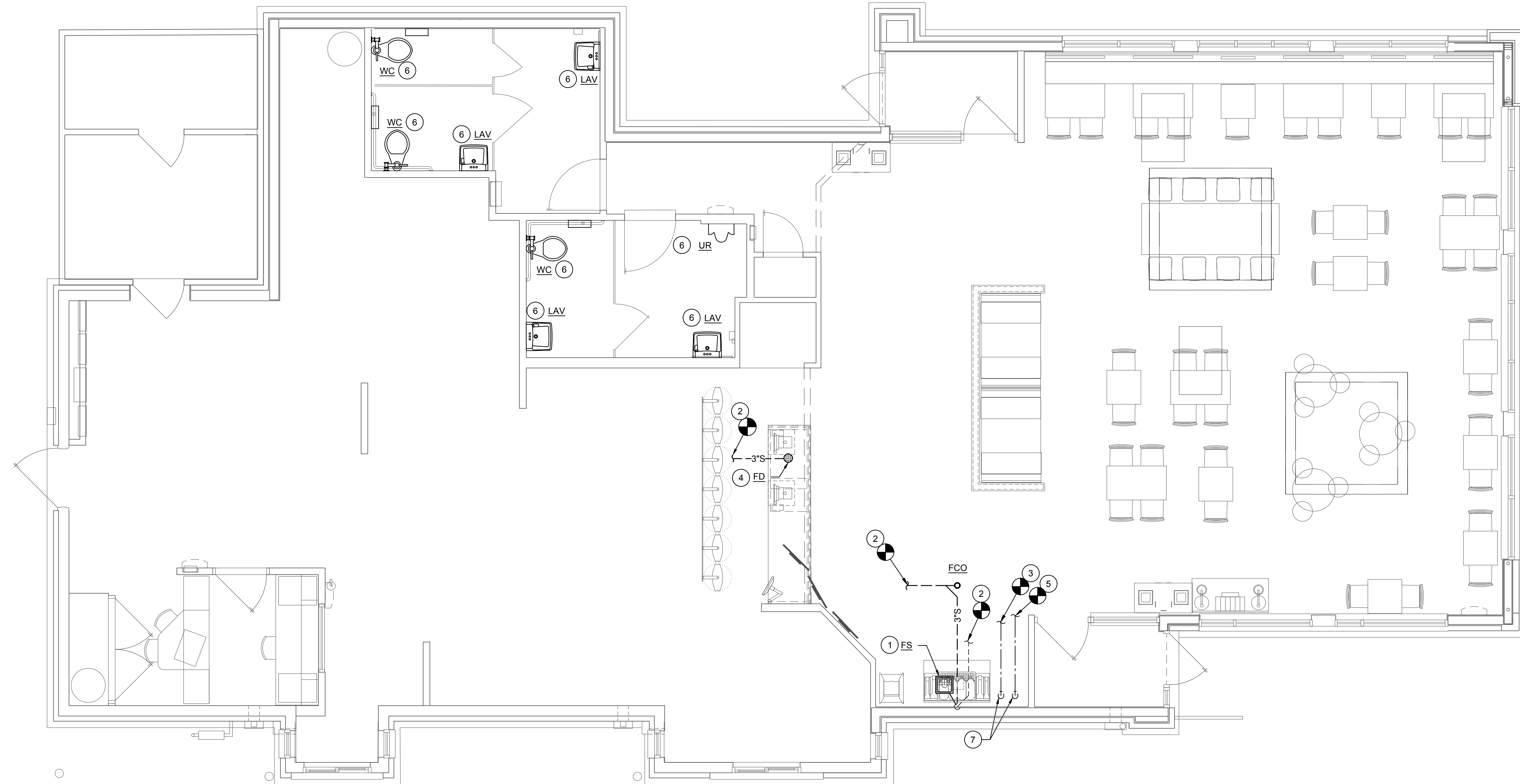
PLUMBING SYMBOLS LEGEND			
LINETYPES:		PIPE SYMBOLS:	
---	COLD WATER (CW)	—○—	PIPE TURNING UP/DN
---	HOT WATER (HW) 140°, 120°	—○—	TEE TURNING UP/DN
---	SANITARY WASTE (SAN)	—○—	SHUTOFF VALVE
---	GREASE WASTE (GW)	—○—	CHECK VALVE
---	PLUMBING VENT (V)	—○—	BALANCING VALVE
		—○—	END CAP
		—○—	CONNECT TO EXISTING

NOT ALL SYMBOLS OR LINETYPES ARE NECESSARILY USED

- GENERAL NOTES**
- PLUMBING CONTRACTOR SHALL MAKE ALL CONNECTIONS TO KITCHEN EQUIPMENT AND MECHANICAL EQUIPMENT UNLESS OTHERWISE NOTED.
 - PROVIDE A TRAP PRIMERS ON ALL NEW FLOOR DRAINS AND FLOOR SINKS WHEN REQUIRED BY AHJ.
 - REPLACE EXISTING MOP SINK/ HAND SINK ASSEMBLY WITH NEW. COORDINATE EXACT MODEL, LOCATION AND SIZE OF KITCHEN EQUIPMENT WITH FLYNN CONSTRUCTION MANAGER PRIOR TO ROUGH-IN.
 - CONTRACTOR TO VISIT THE SITE PRIOR TO BID AND VERIFY ALL EXISTING CONDITIONS. VERIFY REMOVAL OF ANY FLOOR DRAINS WITH WENDY'S CONSTRUCTION MANAGER PRIOR TO START OF CONSTRUCTION.
 - ANY DAMAGES TO ANY EXISTING WALLS, FLOORS, FINISHES ETC. BY THIS CONTRACTOR ARE TO BE REPAIRED AT THIS CONTRACTOR'S EXPENSE.

ATTENTION ALL BIDDERS

REFER TO WENDY'S CONSOLIDATOR LIST TO OBTAIN BUILDING MATERIAL QUOTES. REFER TO WENDY'S APPROVED SUPPLIER LIST FOR PHONE NUMBERS AND CONTACTS.



1 PLUMBING PLAN
SCALE: 1/4" = 1'-0"

SITE NUMBER: 08114
BUILDING TYPE: E2000
ASSET TYPE: FREESTANDING
CLASSIFICATION: REFRESH
OWNER: STARBOARD
BASE VERSION: 2021 SUMMER
UPGRADE CLASSIFICATION: N/A
PROJECT YEAR: 2022
DESIGN TYPE: (2.0) UM BRIGHT
DRAWING RELEASE: 2021 SPRING

CONTRACTOR SHALL VERIFY ALL DIMENSIONS AT THE JOB SITE AND NOTIFY THE ARCHITECTS OF ANY DIMENSIONAL ERRORS, OMISSIONS OR DISCREPANCIES BEFORE BEGINNING OR FABRICATING ANY WORK
DO NOT SCALE DRAWINGS

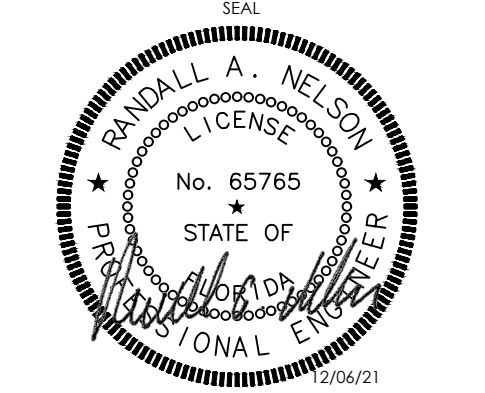


STARBOARD GROUP
12540 W. ATLANTIC BLVD.
CORAL SPRINGS, FL 33071
OFFICE: (954)255-2266

Wendy's
#08558 (STARBOARD #472)
8440 ASTRONAUT BLVD.
CAPE CANAVERAL, FL

REV.	DATE	DESCRIPTION

ISSUE DATE: 12/06/2021
PROJECT NUMBER: 2120443
DRAWN BY: MS/BS
CHECKED BY: AR/CF



SHEET NAME
PLUMBING PLAN

SHEET NUMBER
P1.1