

SITE NUMBER:	08558
BUILDING TYPE:	E200
ASSET TYPE:	FREESTANDING
CLASSIFICATION:	REFRESH
OWNER:	STARBOARD
BASE VERSION:	2021 SPRING
UPGRADE CLASSIFICATION:	N/A
PROJECT YEAR:	2022
DESIGN TYPE:	(2.0) UM BRIGHT
DRAWING RELEASE:	2021 SPRING

Linear Architecture LLC
Philip Kemery,
Architect
4436 Harvest Hill Rd.
Dallas, TX 75244
PHONE: 972.929.9226



STARBOARD GROUP
12540 W. ATLANTIC BLVD.
CORAL SPRINGS, FL 33071
OFFICE: (954)255-2266

RESTROOM SCOPE

- REMOVE EXISTING PLUMBING FIXTURES AND RESTROOM ACCESSORIES AS REQUIRED FOR INSTALLATION OF NEW FINISHES. VERIFY W/ OWNER'S REPRESENTATIVE IF ITEMS ARE TO BE STORED AND REUSED.
- REFER TO DESIGN GUIDE FOR COMPLIANT EXISTING WALL TILE TO REMAIN.
- REMOVE EXISTING FLOOR & WALL FINISHES THROUGHOUT THE RESTROOMS, AS REQUIRED FOR NEW FINISHES. CLEAN, PREP, & REPAIR SUBSTRATES TO SPECIFICATION REQUIREMENTS OF NEW SCHEDULED FINISHES. REPLACE DAMAGED SUBSTRATES AS REQUIRED, DO NOT ADD LAYERS OF SUBSTRATE.
- REMOVE EXISTING TOILET PARTITIONS AND ASSOCIATED HARDWARE. VERIFY W/ OWNER'S REPRESENTATIVE IF ITEMS ARE TO BE STORED AND REUSED.

RESTROOM ELEVATIONS GENERAL NOTES

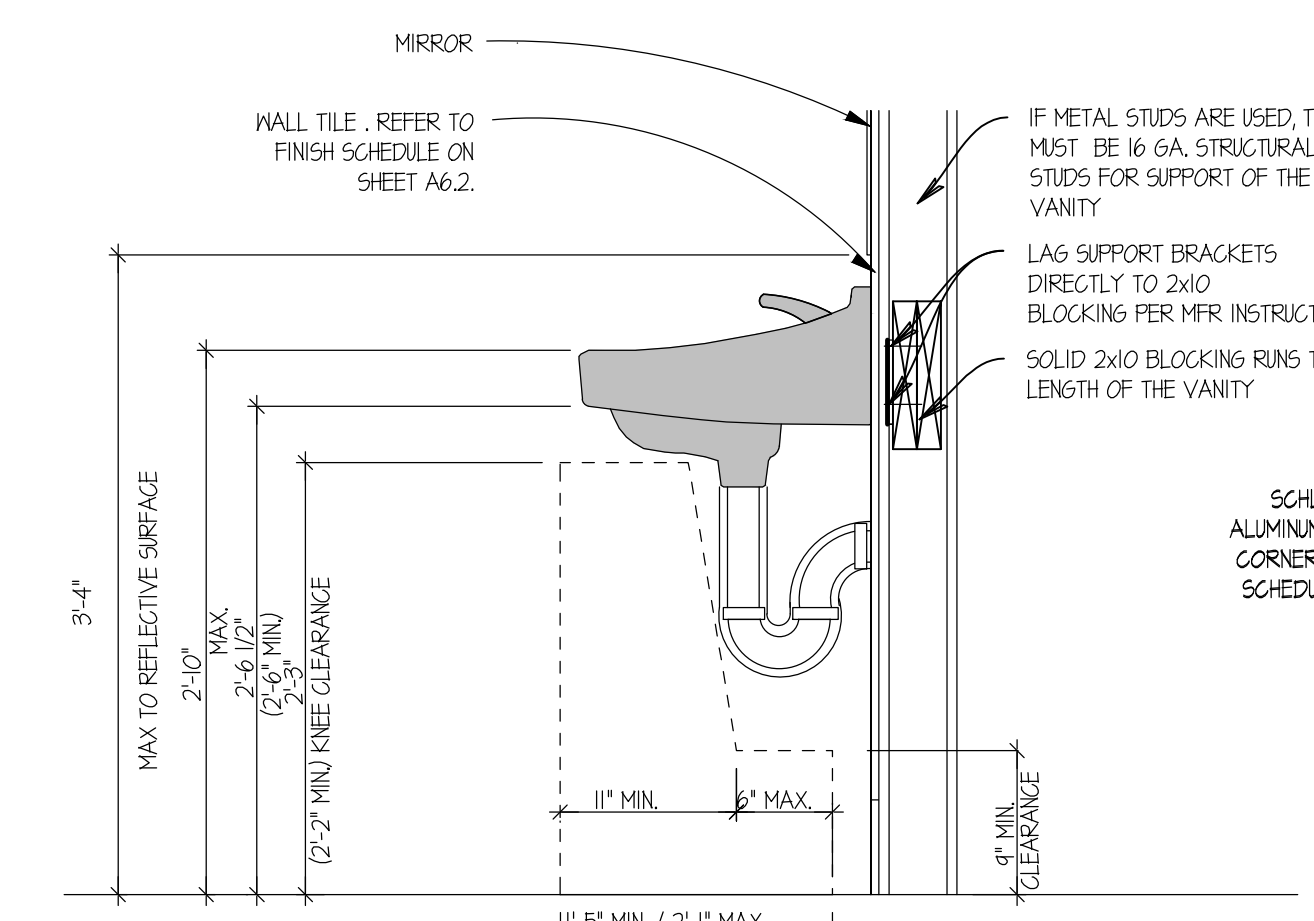
- FIELD VERIFY AND/OR PROVIDE ADDITIONAL REQUIREMENTS TO PROVIDE ACCESSIBILITY PER LOCAL CODE AND THE ADA STANDARDS.

NOTE: SEE SHEET EQ1 FOR ART PACK SCHEDULE

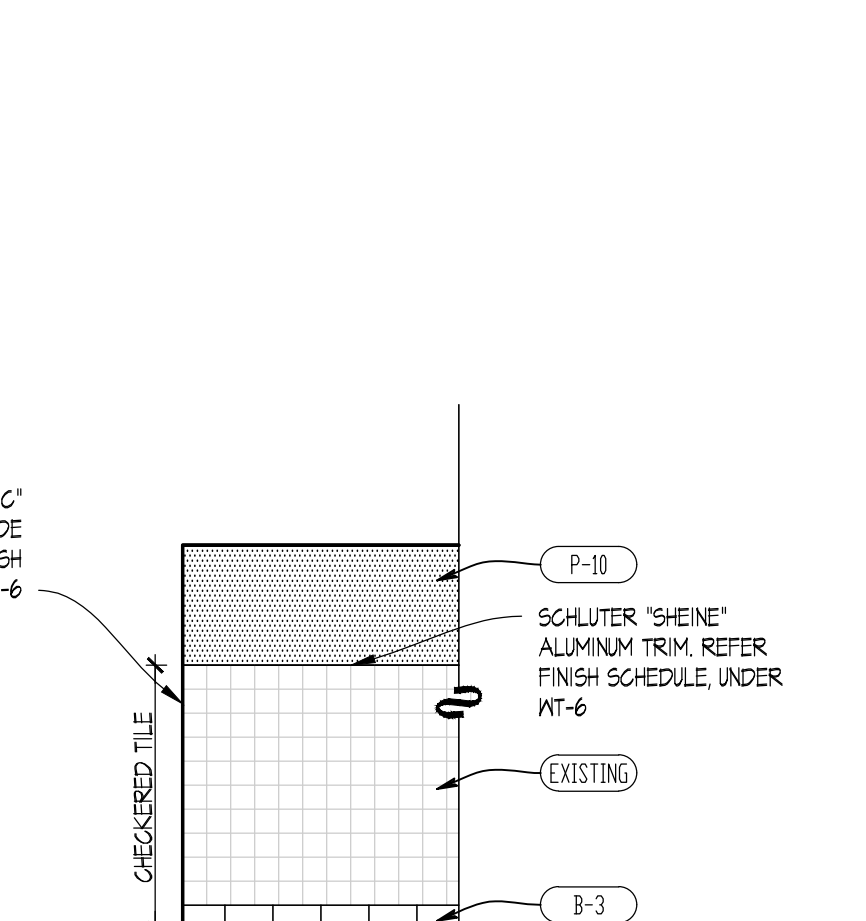
RESTROOM FIXTURE AND HARDWARE SCHEDULE

MARK	QTY	DESCRIPTION	MODEL	FINISH	NOTES
(A)		SEMI-RECESSED PAPER TOWEL & WASTE RECEPTACLE	ASI 646424A (SEMI-RECESSED) PAPER ROLL AUTOMATIC DISPENSING OR BOBRICK B-3414 (SEMI-RECESSED) PAPER ROLL AUTOMATIC DISPENSING	STAINLESS STEEL	
(B)		NEW SEMI-RECESSED HAND DRYER, OPTIONAL FOR FRANCHISEE RESTAURANTS.	ASI 10-0149-1 SURFACE MOUNTED STAINLESS STEEL HAND DRYER		
(C)		TOILET PAPER DISPENSER, SURFACE MOUNTED JEMBO ROLL TOILET TISSUE DISPENSER	ASI MODEL NO. 0042	SATIN	OUTER CABINET, STAINLESS STEEL
(D)		COAT HOOK	BRADLEY 9114 SATIN STAINLESS STEEL HOOK	SATIN	SEE PLAN FOR LOCATIONS
(E)		BABY CHANGING STATION	KOALA KARE PRODUCTS KB200-00	CREAM	REFER TO MANUFACTURER FOR INSTALLATION
(F)		TWO WALL TOILET COMPARTMENT GRAB BAR 1/4" DIAMETER	ASI - 3800 TYPE 5T	SATIN	STAINLESS STEEL W/ EXPOSED MOUNTING, FURNISHED COMPLETE W/ MOUNTING KIT
(G)		NOT USED			
(H)		MIRROR	MEEK M2513 24 X 36 MIRROR	SATIN	STAINLESS STEEL - ANGLE FRAMED W/ WELDED CORNERS
(J)		18" VERTICAL GRAB BAR	MAINLINE FB2312	SATIN	STAINLESS STEEL W/ EXPOSED MOUNTING, FURNISHED COMPLETE W/ MOUNTING KIT
(K)		WALL MOUNTED 'EQUILAB' HANDS-FREE SOAP DISPENSER		BLACK	SUPPLIED BY KED (G0204)
(L)		NOT USED			
(M)		NOT USED			

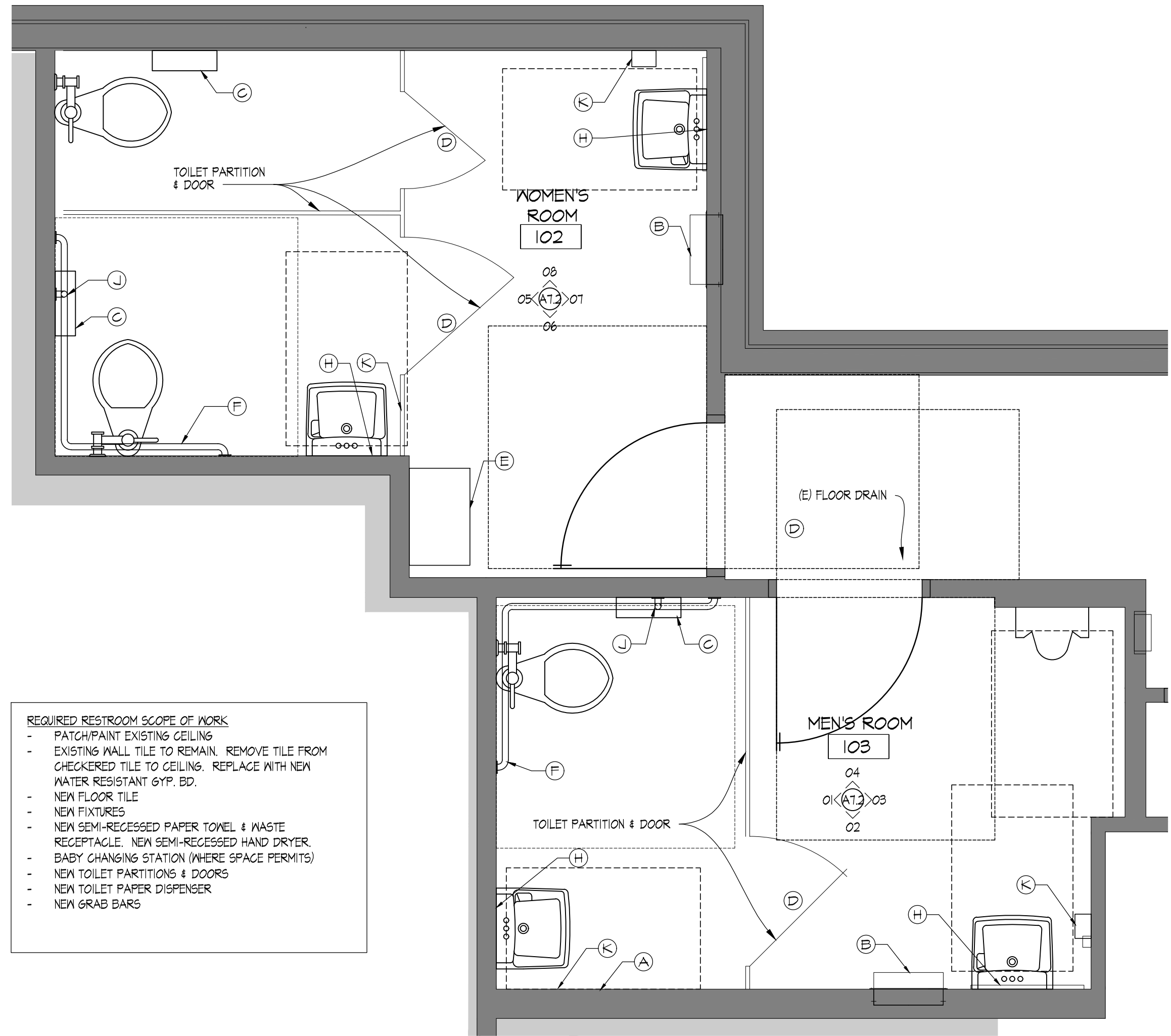
NOTE: REFER TO SUPPLIER SHEET FOR BUILDING MATERIAL CONSOLIDATOR CONTACT INFORMATION



10 TYPICAL LAVATORY SECTION
SCALE: 1/4" = 1'-0"

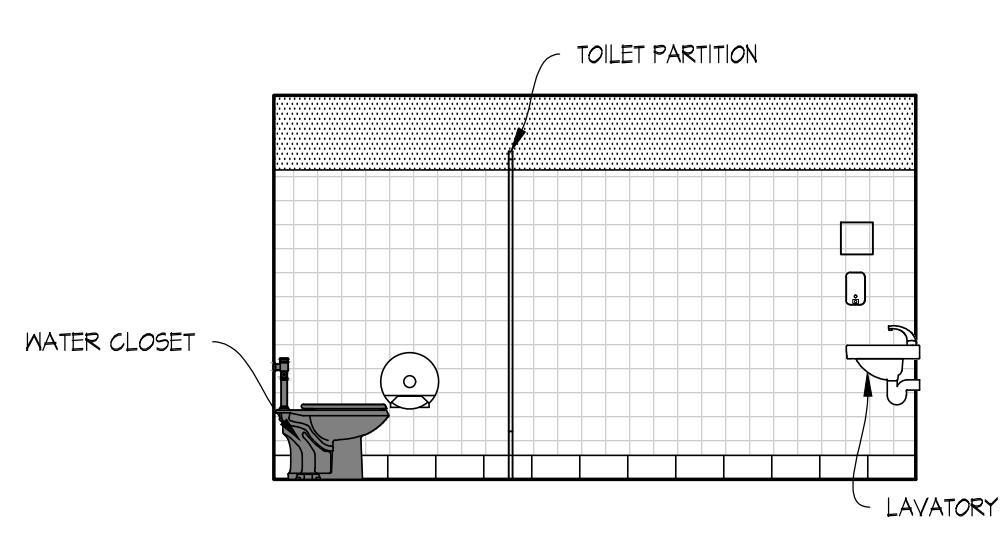


09 TYPICAL WALL FINISHES
SCALE: 1/4" = 1'-0"

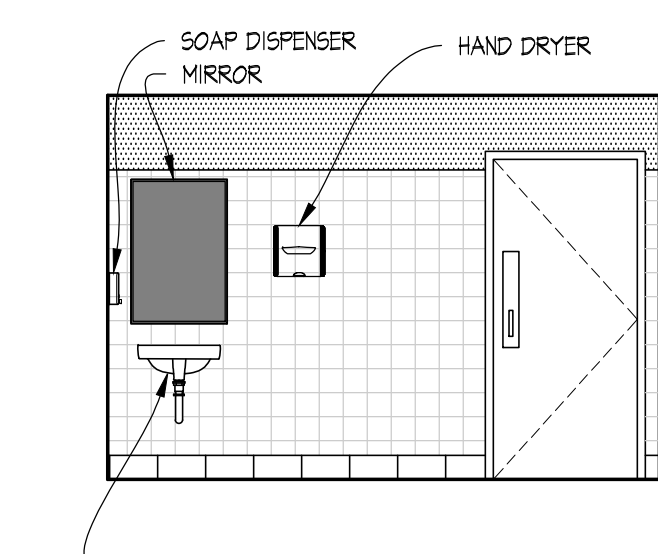


A ENLARGED RESTROOM FLOOR PLAN
SCALE: 1/2" = 1'-0"

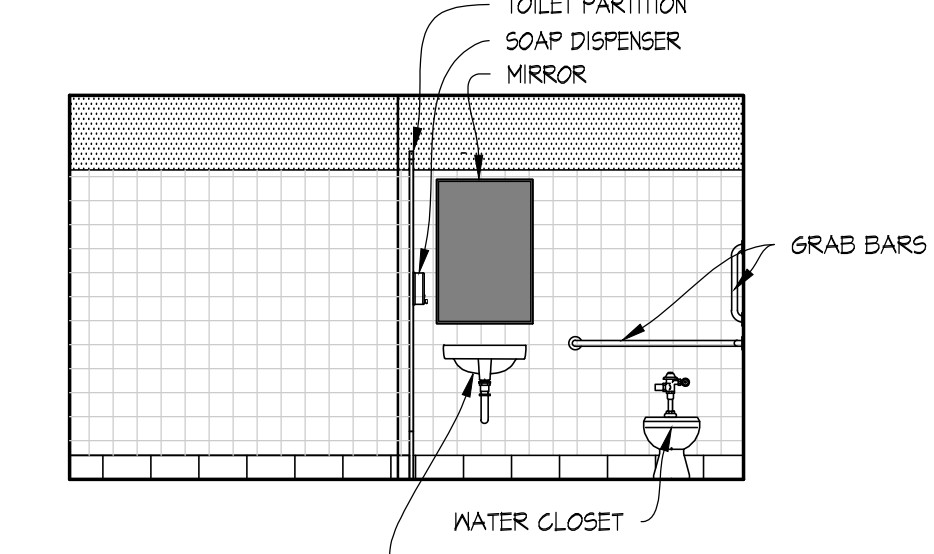
- REQUIRED RESTROOM SCOPE OF WORK
- PATCH/PAINT EXISTING CEILING
 - EXISTING WALL TILE TO REMAIN. REMOVE TILE FROM CHECKERED TILE TO CEILING. REPLACE WITH NEW WATER RESISTANT GYP. BD.
 - NEW FLOOR TILE
 - NEW FIXTURES
 - NEW SEMI-RECESSED PAPER TOWEL & WASTE RECEPTACLE. NEW SEMI-RECESSED HAND DRYER.
 - BABY CHANGING STATION (WHERE SPACE PERMITS)
 - NEW TOILET PARTITIONS & DOORS
 - NEW TOILET PAPER DISPENSER
 - NEW GRAB BARS



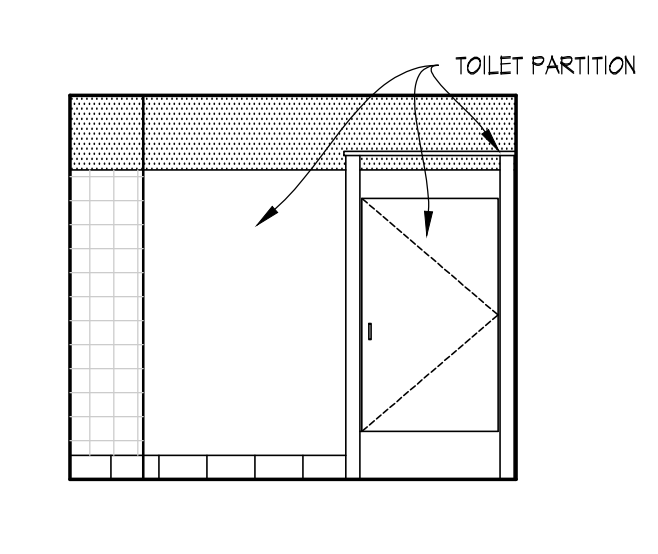
08 WOMENS ROOM
SCALE: 1/4" = 1'-0"



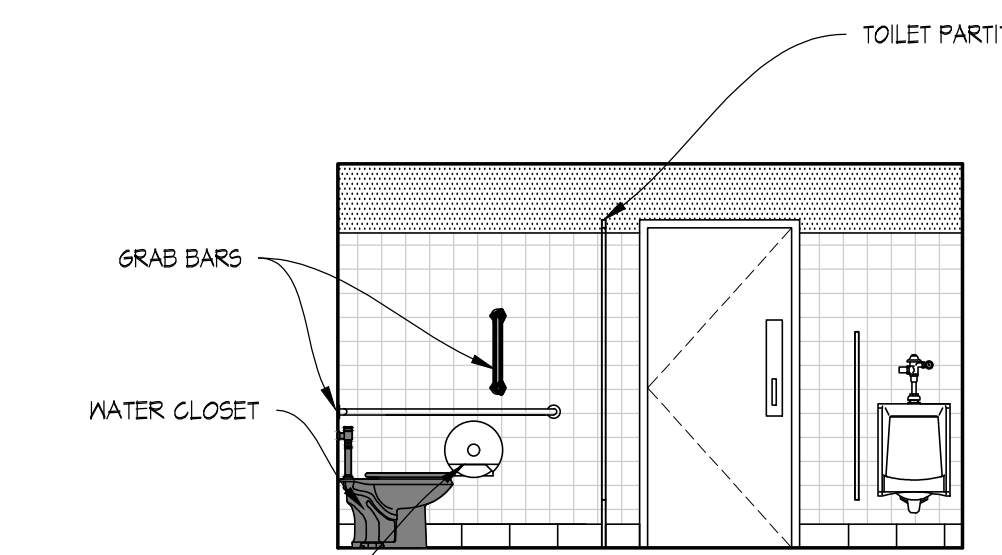
07 WOMENS ROOM
SCALE: 1/4" = 1'-0"



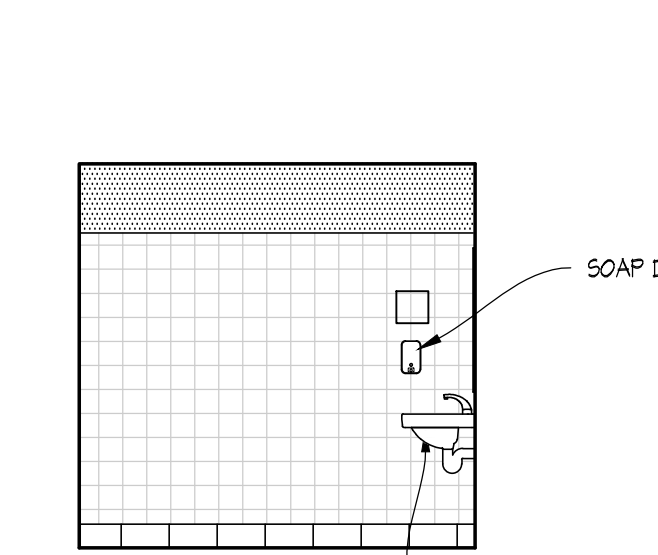
06 WOMENS ROOM
SCALE: 1/4" = 1'-0"



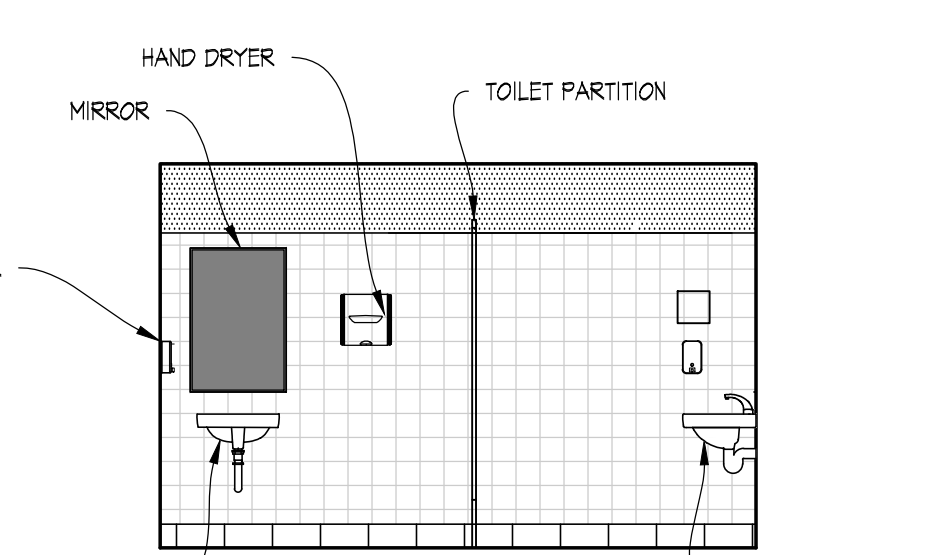
05 WOMENS ROOM
SCALE: 1/4" = 1'-0"



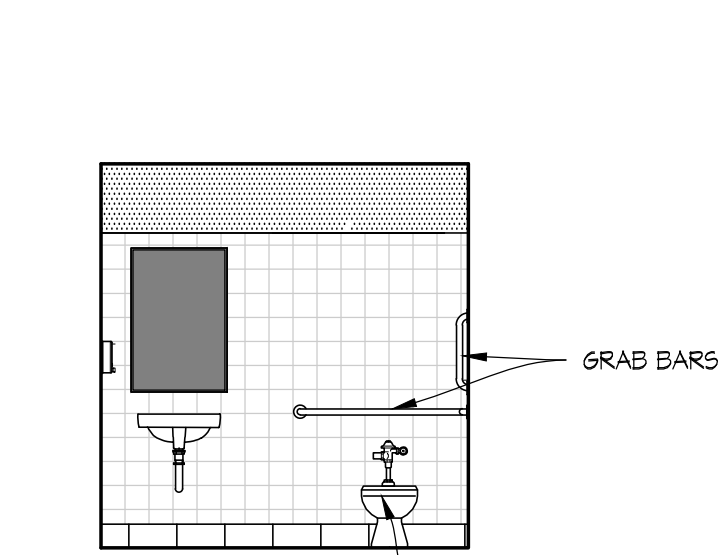
04 MENS ROOM
SCALE: 1/4" = 1'-0"



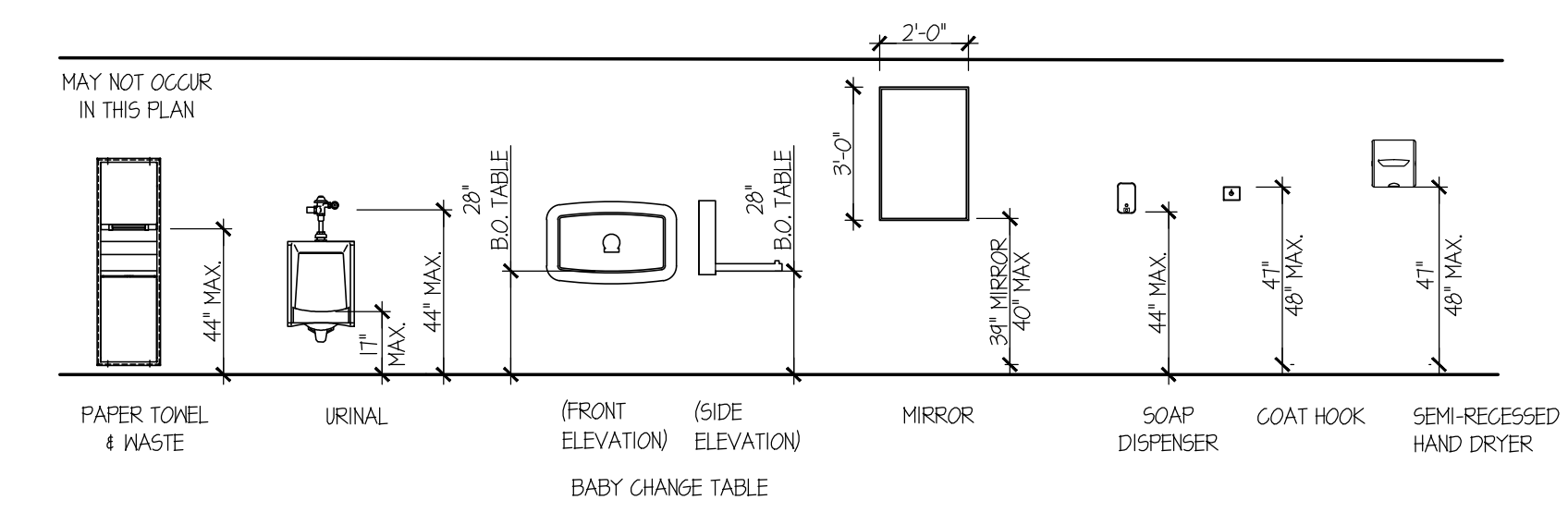
03 MENS ROOM
SCALE: 1/4" = 1'-0"



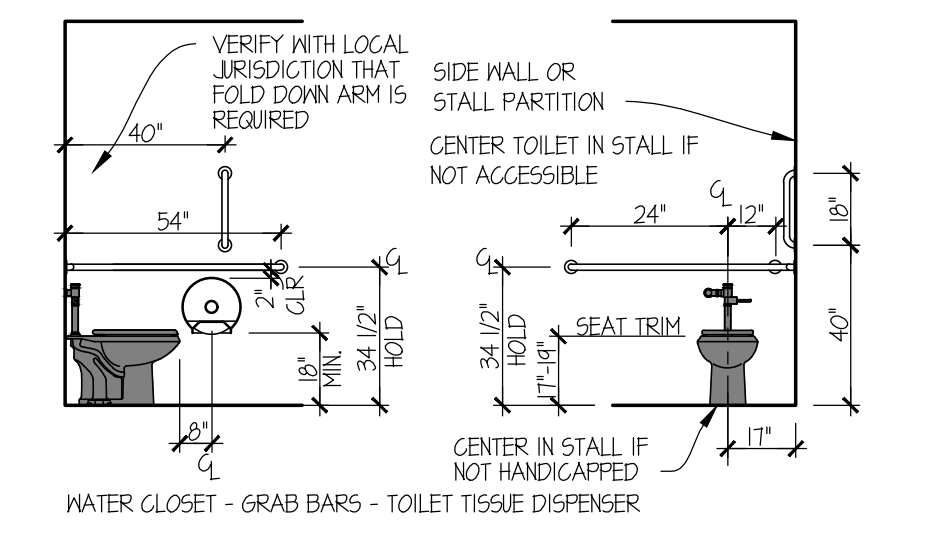
02 MENS ROOM
SCALE: 1/4" = 1'-0"



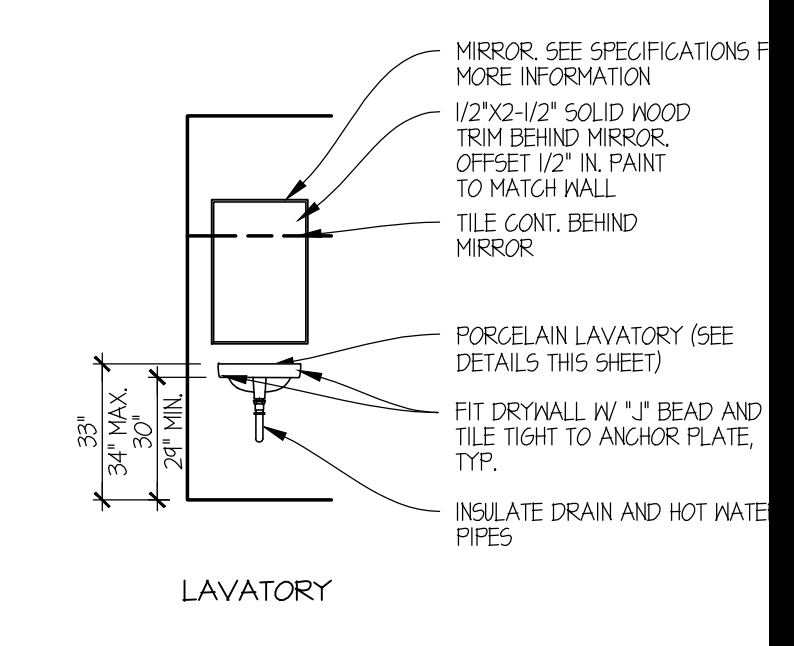
01 MENS ROOM
SCALE: 1/4" = 1'-0"



00 TYPICAL RESTROOM ACCESSORIES
SCALE: 1/4" = 1'-0"

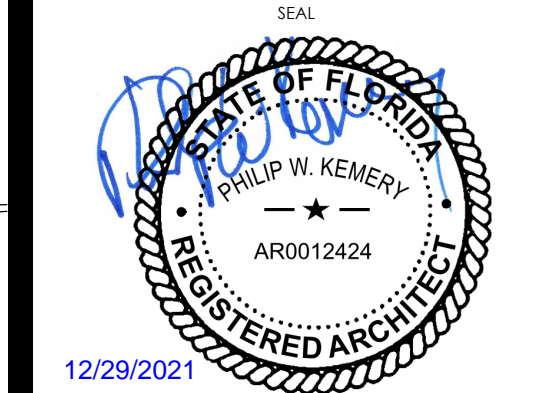


NOTE CONTRACTOR TO PROVIDE 2X6 WOOD BLOCKING IN WALL FOR ANCHORAGE OF GRAB BARS AS REQUIRED.



Wendy's
#08558 (STARBOARD #472)
8440 ASTRONAUT BLVD.
CAPE CANAVERAL, FL

REV.	DATE	DESCRIPTION



INTERIOR ELEVATIONS
RESTROOMS

A7.2

12/29/2021, 3:18 PM, C:\Users\mkemery\OneDrive - Philip W. Kemery\Documents\A7_2\Interior Elevations.dwg, updfin