

**PLUMBING FIXTURE SCHEDULE**

SYMBOL	FIXTURE TYPE	MANUF.	MODEL	DESCRIPTION	ACCESSORIES/OPTIONS	NOTES (#)
WC	WATER CLOSET (ACCESSIBLE)	SLOAN	ST-2029 (2102029)	FLOOR MOUNT, WHITE VITREOUS CHINA, 1.1-1.6 GPF ELONGATED SIPHON JET BOWL, 1-1/2" TOP SPUD, & RIM HEIGHT 17" A.F.F.	TOTO #TET1LA32#CP-W 1.28 GPF ECOPOWER SENSOR WATER CLOSET FLUSH VALVE, MAINLINE #ML1055SSC00 WHITE OPEN FRONT ELONGATED TOILET SEAT LESS COVER.	(1), (5)
LAV	LAVATORY (ACCESSIBLE)	AMERICAN STANDARD	#0356.921.020 LUCERNE	WALL HUNG, 20"x18 1/2", WHITE VITREOUS CHINA.	TOTO #TEL105-D10SE POLISHED CHROME, SINGLE HOLE, ECOPOWER DECK MOUNTED FAUCET WITH 0.09GPC DISCHARGE (10 SECOND CYCLE).	(1), (2), (3), (5)
UR	URINAL (ACCESSIBLE)	SLOAN	SU-1009A	WALL HUNG URINAL, WHITE VITREOUS CHINA.	SLOAN #SU-1009A (1101009) 0.125-0.5 GPF URINAL ADA, TOTO #TEU1UA12#CP 0.125 GPF URINAL FLUSH VALVE.	(1), (4), (5)
MV	MIXING VALVE	ZURN	ZW3870XL / ZW1070XL	THERMOSTATIC CONTROLLER WITH INTEGRAL CHECKS, ALL BRASS BODY WITH DUAL STAINLESS STEEL STRAINER, VANDAL RESISTANT TEMPERATURE ADJUSTMENT HANDLE.	SET TO 105°F. MOUNT IN ACCESSIBLE LOCATION.	(5)

- NOTES:
- INSTALL IN ACCORDANCE TO ADA ACCESSIBILITY REQUIREMENTS.
  - PROVIDE WITH QUARTER TURN BRASS ANGLE COMPRESSION STOPS WITH LOOSE KEY HANDLES, STAINLESS BRAIDED SUPPLIES, CHROME SUPPLY AND DRAIN ESCUTCHEONS, CHROME GRID STRAINER DRAIN WITH TAILPIECE, CHROME PLATED CAST BODY P-TRAP WITH CLEANOUT AND MIXING VALVE (MV). INSULATE WASTE AND WATER PIPING WITH TRUEBRO "LAV-GUARD" #101-EZ.
  - FURNISH WITH ZURN #Z-1231-81 LAVATORY CARRIER.
  - FURNISH WITH ZURN #Z-1222 URINAL CARRIER.
  - REFER TO ARCHITECTURAL SUPPLIER PAGE FOR WENDY'S NATIONAL VENDOR PRICING CONTACTS. VERIFY PRIOR TO BID IF GENERAL CONTRACTOR OR OWNER WILL PROVIDE EQUIPMENT.

**PLUMBING & EQUIPMENT SCHEDULE**

SYMBOL	QUANTITY	GENERAL FIXTURE DESCRIPTION	DOMESTIC WATER				SANITARY				REMARKS	
			FILTERED WATER	COLD WATER	HOT WATER (10°F)	MOUNTING HEIGHT	DRAIN LINE SIZE	TRAP	FIXTURE DRAIN	DIRECT/INDIRECT		VENT
WC	3	WATER CLOSET (ACCESSIBLE)	1"		(8)	4"	INT	4"	D	2"	FL	(1),(3),(6),(7)
LAV	4	LAVATORY	1/2"	1/2"	(8)	1 1/2"	1 1/2"	D	1 1/2"	(8)		(1),(3),(6),(7)
UR	1	URINAL	3/4"		(8)	2"	INT	2"	D	1 1/2"	(8)	(1),(3),(6),(7)

PLUMBING FIXTURES

WC	LAV	UR
3	4	1

- REMARKS (#)**
- THIS EQUIPMENT FURNISHED BY PLUMBING CONTRACTOR.
  - THIS EQUIPMENT FURNISHED BY OTHERS.
  - PROVIDE VALVE AT EACH CONNECTION TO EQUIPMENT.
  - INDIRECT TO HUB DRAIN.
  - PROVIDE WITH BACKFLOW PREVENTER. COORDINATE BACKFLOW INSTALLATION WITH KITCHEN EQUIPMENT PROVIDER AND BEVERAGE INSTALLER.
  - NEW FIXTURES CONNECTED TO EXISTING WATER LINES AND DRAINAGE SYSTEM IF REPLACED. REFER TO PLUMBING FIXTURE INFORMATION ON THIS SHEET.
  - REFER TO MANUFACTURER'S INSTALLATION INSTRUCTIONS.
  - VERIFY DIRECT OR INDIRECT WASTE CONNECTION PER LOCAL CODE REQUIREMENTS.
  - VERIFY SANITARY OR GREASE WASTE CONNECTION PER LOCAL CODE REQUIREMENTS.
  - FINAL CONNECTION TO EQUIPMENT BY OTHERS.
  - SHUTOFF VALVE AND FLEX CONNECTOR LINES TO PRE-RINSE ARE PROVIDED WITH FIXTURE.

**GENERAL NOTES**

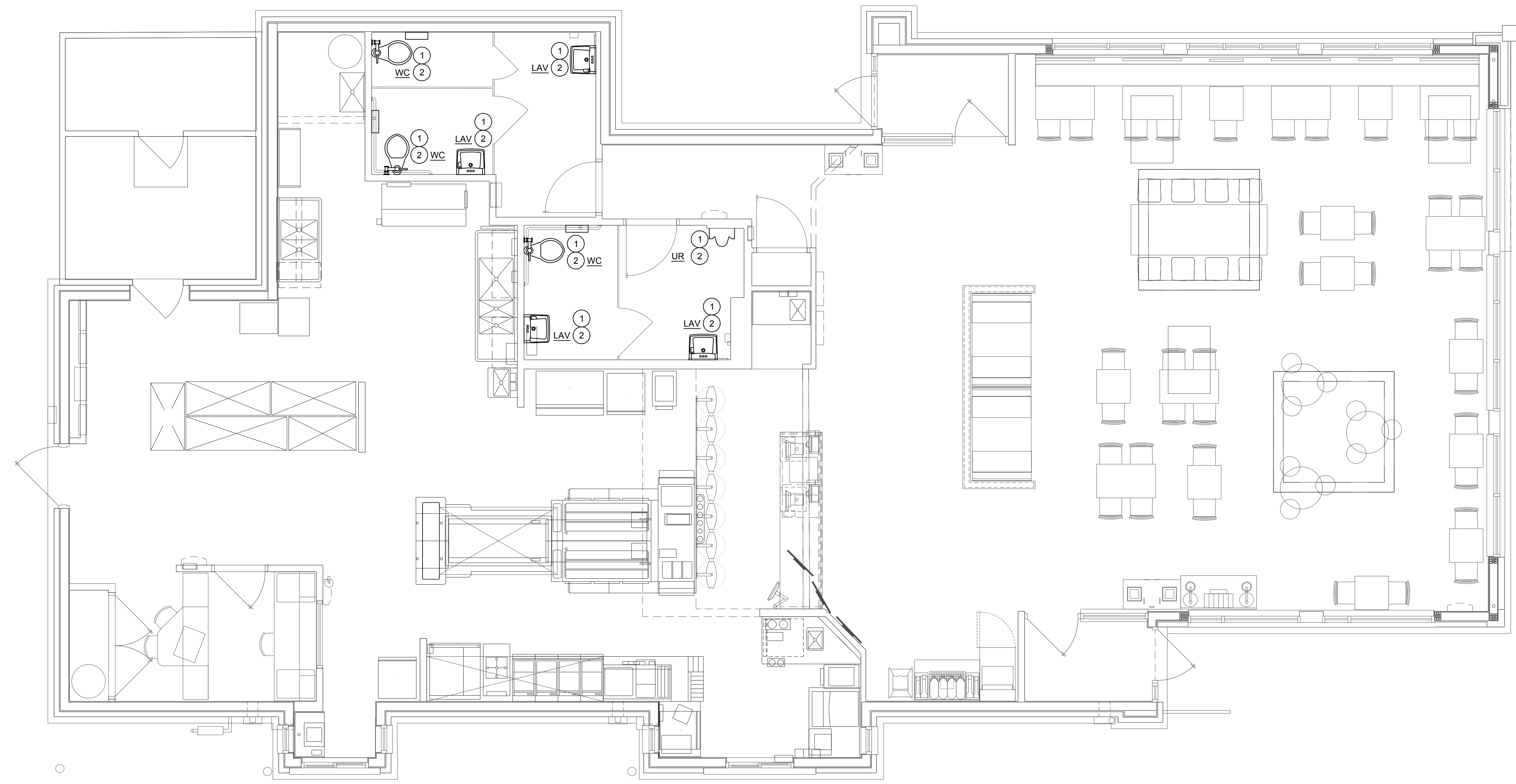
- PLUMBING CONTRACTOR SHALL MAKE ALL CONNECTIONS TO KITCHEN EQUIPMENT AND MECHANICAL EQUIPMENT UNLESS OTHERWISE NOTED.
- PROVIDE A TRAP PRIMERS ON ALL NEW FLOOR DRAINS AND FLOOR SINKS WHEN REQUIRED BY AHJ.
- REPLACE EXISTING MOP SINK/ HAND SINK ASSEMBLY WITH NEW. COORDINATE EXACT MODEL, LOCATION AND SIZE OF KITCHEN EQUIPMENT WITH FLYNN CONSTRUCTION MANAGER PRIOR TO ROUGH-IN.
- CONTRACTOR TO VISIT THE SITE PRIOR TO BID AND VERIFY ALL EXISTING CONDITIONS. VERIFY REMOVAL OF ANY FLOOR DRAINS WITH WENDY'S CONSTRUCTION MANAGER PRIOR TO START OF CONSTRUCTION.
- ANY DAMAGES TO ANY EXISTING WALLS, FLOORS, FINISHES ETC. BY THIS CONTRACTOR ARE TO BE REPAIRED AT THIS CONTRACTOR'S EXPENSE.

**# CODED NOTES:**

- PLUMBING FIXTURE TO BE REPLACED WITH NEW PER SCHEDULE. EXISTING FIXTURES TO BE REMOVED FOR ROOM REFINISH AND NEW FIXTURES INSTALLED IN SAME LOCATIONS AFTER WORK IS COMPLETE.
- CONNECT TO NEAREST EXISTING PIPING OF ADEQUATE SIZE AND CAPACITY. COORDINATE LOCATION, SIZE AND DIRECTION OF EXISTING SANITARY MAIN PRIOR TO ROUGH-IN.

**ATTENTION ALL BIDDERS**

REFER TO WENDY'S CONSOLIDATOR LIST TO OBTAIN BUILDING MATERIAL QUOTES. REFER TO WENDY'S APPROVED SUPPLIER LIST FOR PHONE NUMBERS AND CONTACTS.



**1 PLUMBING PLAN**  
SCALE: 1/4" = 1'-0"

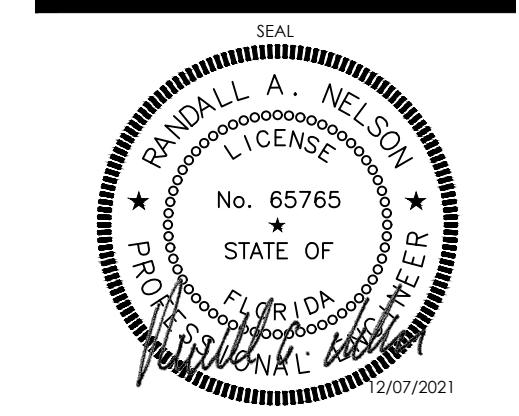
SITE NUMBER: 08452  
 BUILDING TYPE: E2000  
 ASSET TYPE: FREESTANDING  
 CLASSIFICATION: REFRESH  
 OWNER: STARBOARD  
 BASE VERSION: 2021 SPRING  
 UPGRADE CLASSIFICATION: N/A  
 PROJECT YEAR: 2022  
 DESIGN TYPE: (2.0) UM BRIGHT  
 DRAWING RELEASE: 2021 SPRING



STARBOARD GROUP  
 12540 W. ATLANTIC BLVD.  
 CORAL SPRINGS, FL 33071  
 OFFICE: (954)255-2266

**Wendy's**  
 #08452 (STARBOARD #469)  
 648 BARNES BLVD.  
 ROCKLEDGE, FL 32955

REV.	DATE	DESCRIPTION



SHEET NAME  
**PLUMBING PLAN**

SHEET NUMBER  
**P1.1**