

RESTROOM FIXTURE AND HARDWARE SCHEDULE

MARK	QTY	DESCRIPTION	MODEL	FINISH	NOTES
(A)		SEMI-RECESSED PAPER TOWEL & WASTE RECEPTACLE	ASI 64624A (SEMI-RECESSED) PAPER ROLL AUTOMATIC DISPENSING OR BOBRICK B-9414 (SEMI-RECESSED) PAPER ROLL AUTOMATIC DISPENSING	STAINLESS STEEL	
(B)		NEW SEMI-RECESSED HAND DRYER, OPTIONAL FOR FRANCHISEE RESTAURANTS.	ASI 10-0149-1 SURFACE MOUNTED STAINLESS STEEL HAND DRYER		
(C)		TOILET PAPER DISPENSER, SURFACE MOUNTED JEMBO ROLL, TOILET TISSUE DISPENSER	ASI MODEL NO. 0042	SATIN	OUTER CABINET, STAINLESS STEEL
(D)		COAT HOOK	BRADLEY 9114 SATIN STAINLESS STEEL HOOK	SATIN	SEE PLAN FOR LOCATIONS
(E)		BABY CHANGING STATION	KOALA KARE PRODUCTS KB200-00	CREAM	REFER TO MANUFACTURER FOR INSTALLATION
(F)		TWO WALL TOILET COMPARTMENT GRAB BAR 1/4" DIAMETER	ASI - 3800 TYPE 51	SATIN	STAINLESS STEEL W/ EXPOSED MOUNTING, FURNISHED COMPLETE W/ MOUNTING KIT
(G)		NOT USED			
(H)		MIRROR	MEEK M2513 24 X 36 MIRROR	SATIN	STAINLESS STEEL - ANGLE FRAMED W/ WELDED CORNERS
(J)		18" VERTICAL GRAB BAR	MAINLINE PB2312	SATIN	STAINLESS STEEL W/ EXPOSED MOUNTING, FURNISHED COMPLETE W/ MOUNTING KIT
(K)		WALL MOUNTED 'EQUOLAB' HANDS-FREE SOAP DISPENSER		BLACK	SUPPLIED BY KED (G0204)
(L)		NOT USED			
(M)		NOT USED			

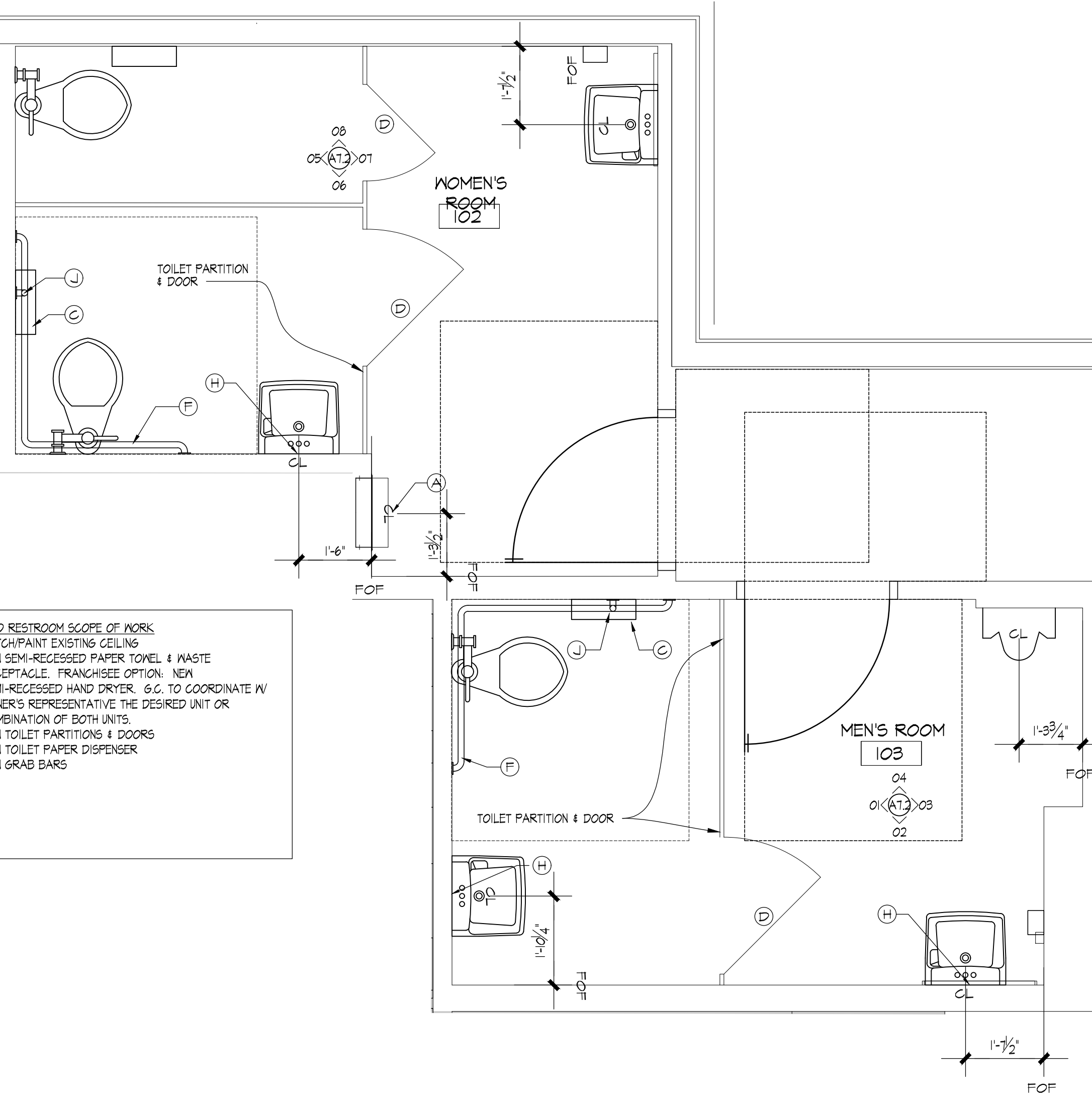
NOTE: REFER TO SUPPLIER SHEET FOR BUILDING MATERIAL CONSOLIDATOR CONTACT INFORMATION.

RESTROOM SCOPE

- REMOVE EXISTING PLUMBING FIXTURES AND RESTROOM ACCESSORIES AS REQUIRED FOR INSTALLATION OF NEW FINISHES. VERIFY W/ OWNER'S REPRESENTATIVE IF ITEMS ARE TO BE STORED AND REUSED.
- REFER TO DESIGN GUIDE FOR COMPLIANT EXISTING WALL TILE TO REMAIN.
- REMOVE EXISTING FLOOR & WALL FINISHES THROUGHOUT THE RESTROOMS, AS REQUIRED FOR NEW FINISHES. CLEAN, PREP, & REPAIR SUBSTRATES TO SPECIFICATION REQUIREMENTS OF NEW SCHEDULED FINISHES. REPLACE DAMAGED SUBSTRATES AS REQUIRED, DO NOT ADD LAYERS OF SUBSTRATE.
- REMOVE EXISTING TOILET PARTITIONS AND ASSOCIATED HARDWARE. VERIFY W/ OWNER'S REPRESENTATIVE IF ITEMS ARE TO BE STORED AND REUSED.

RESTROOM ELEVATIONS GENERAL NOTES

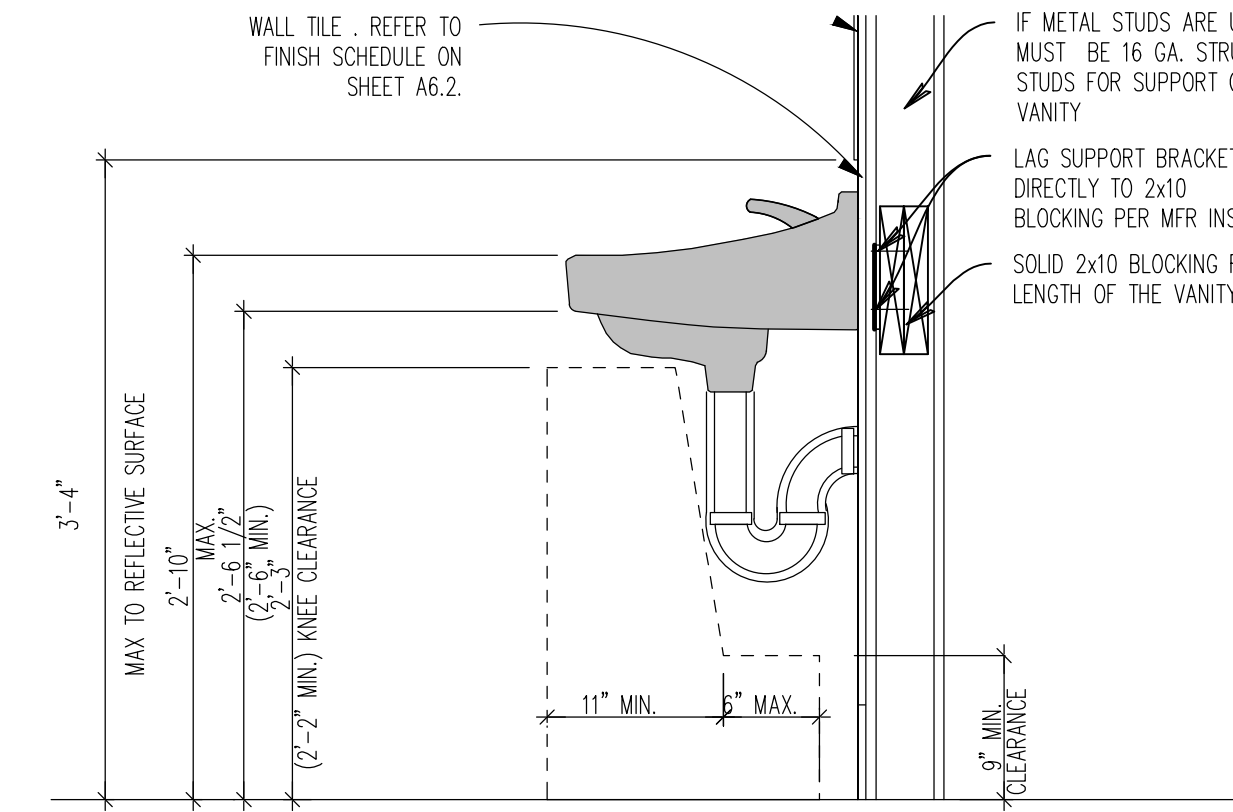
- FIELD VERIFY AND/OR PROVIDE ADDITIONAL REQUIREMENTS TO PROVIDE ACCESSIBILITY PER LOCAL CODE AND THE ADA STANDARDS.
- NOTE: SEE SHEET EQ11 FOR ART PACK SCHEDULE



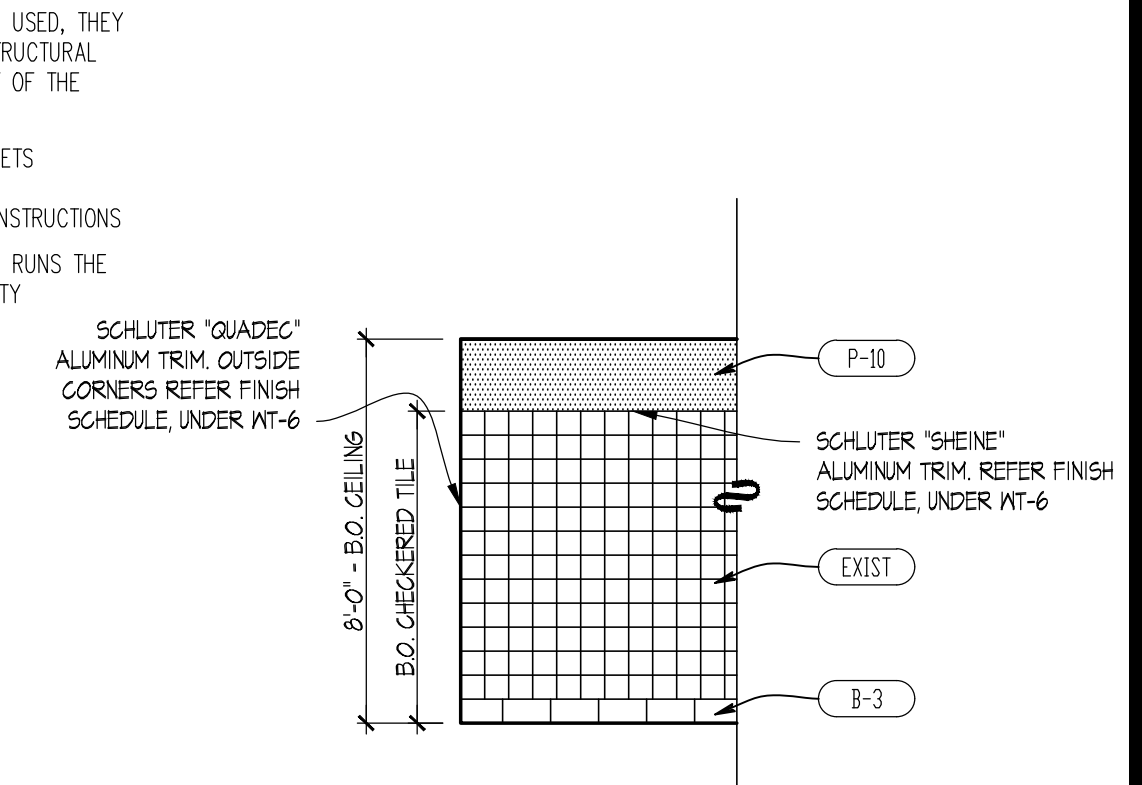
REQUIRED RESTROOM SCOPE OF WORK

- PATCH/PAINT EXISTING CEILING
- NEW SEMI-RECESSED PAPER TOWEL & WASTE RECEPTACLE, FRANCHISEE OPTION: NEW SEMI-RECESSED HAND DRYER, G.C. TO COORDINATE W/ OWNER'S REPRESENTATIVE THE DESIRED UNIT OR COMBINATION OF BOTH UNITS.
- NEW TOILET PARTITIONS & DOORS
- NEW TOILET PAPER DISPENSER
- NEW GRAB BARS

A ENLARGED RESTROOM FLOOR PLAN
SCALE: 1/2" = 1'-0"



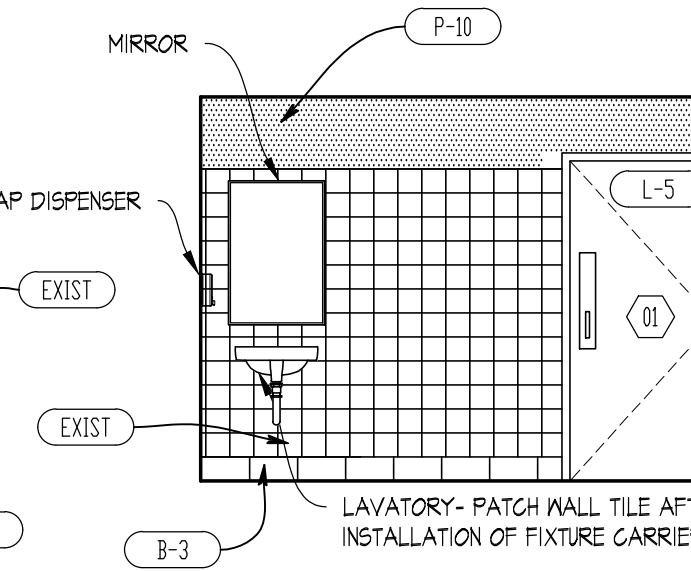
10 TYPICAL LAVATORY SECTION
SCALE: 1/4" = 1'-0"



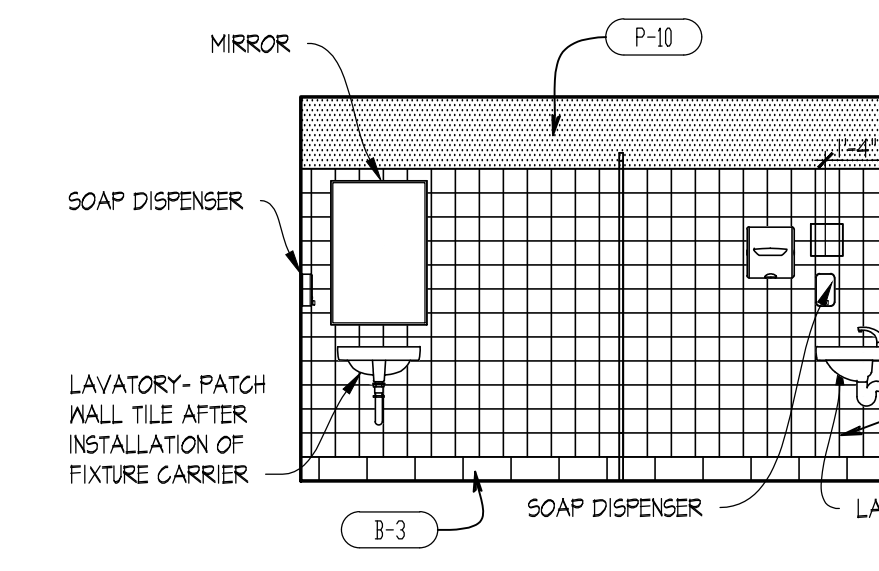
09 TYPICAL WALL FINISHES
SCALE: 1/4" = 1'-0"



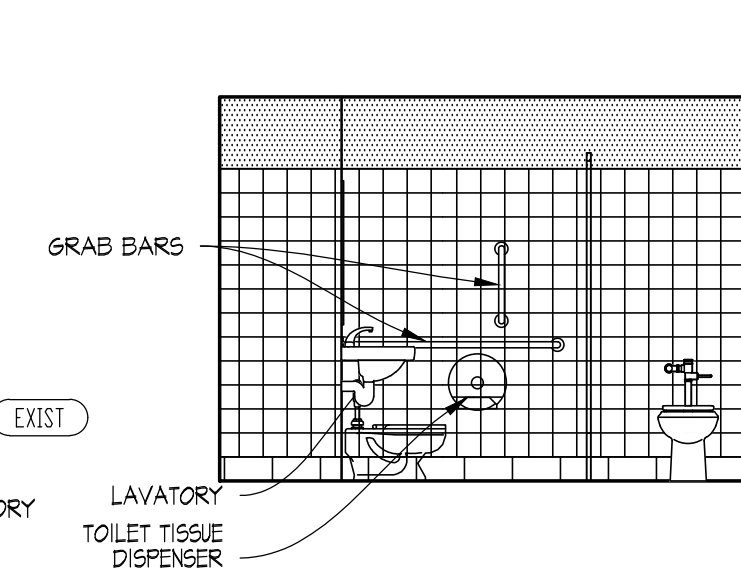
08 WOMEN'S RM 102
SCALE: 1/4" = 1'-0"



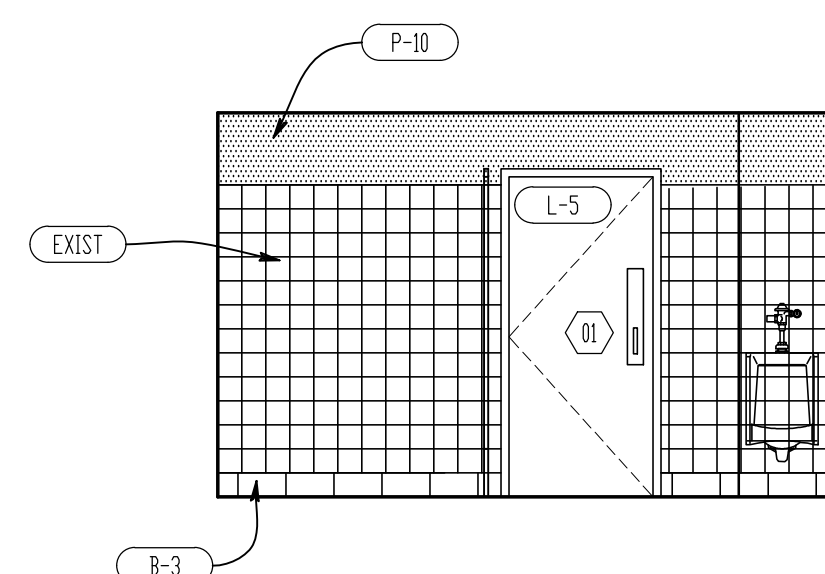
07 WOMEN'S RM 102
SCALE: 1/4" = 1'-0"



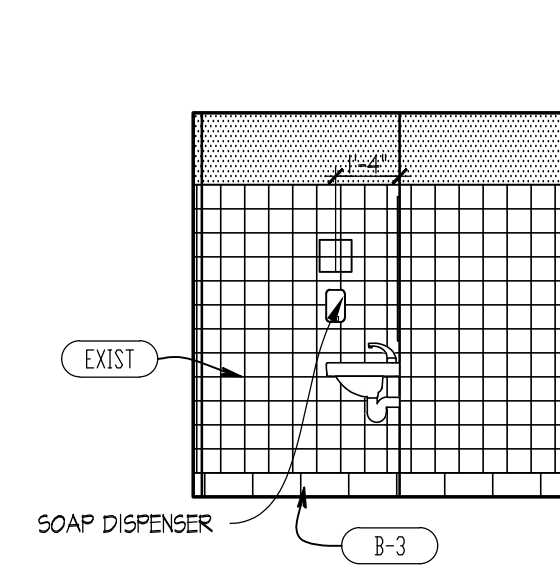
06 WOMEN'S RM 102
SCALE: 1/4" = 1'-0"



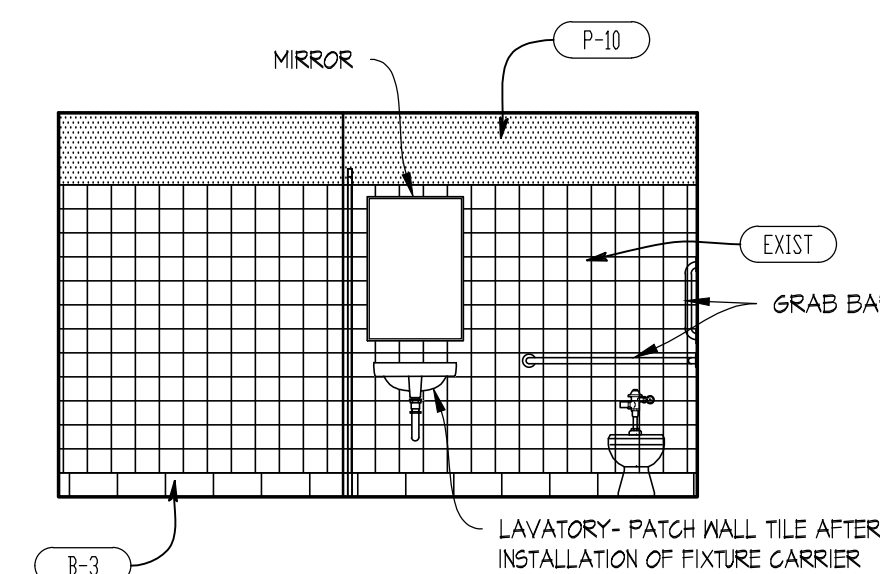
05 WOMEN'S RM 102
SCALE: 1/4" = 1'-0"



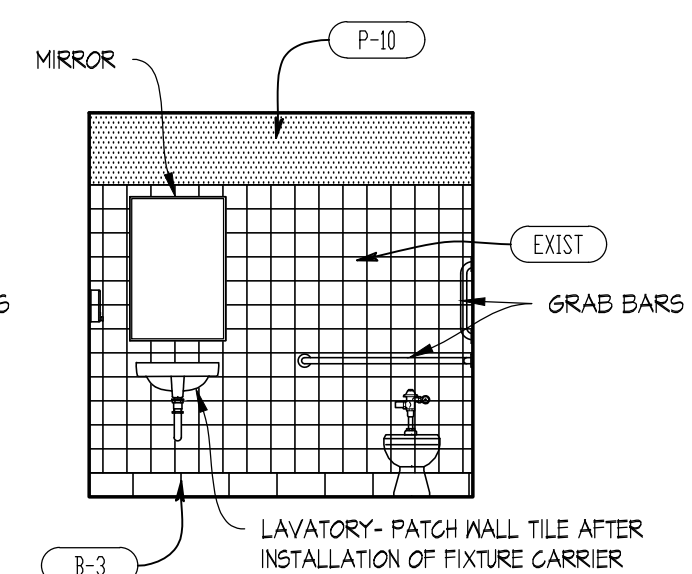
04 MEN'S RM 103
SCALE: 1/4" = 1'-0"



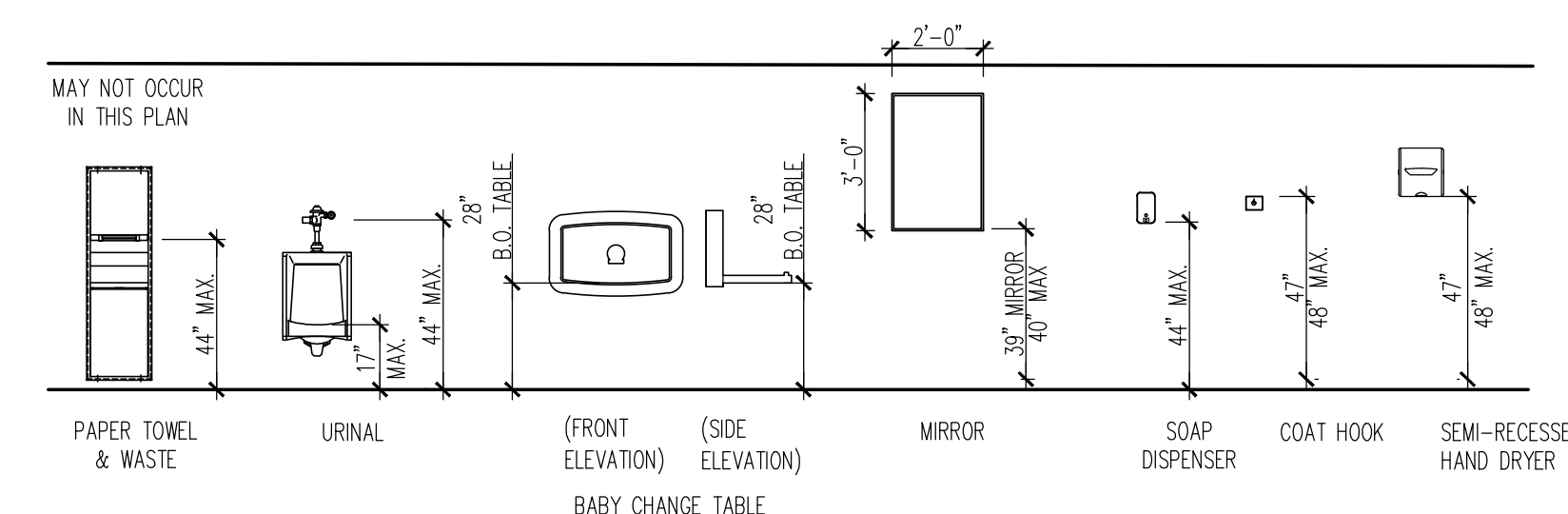
03 MEN'S RM 103
SCALE: 1/4" = 1'-0"



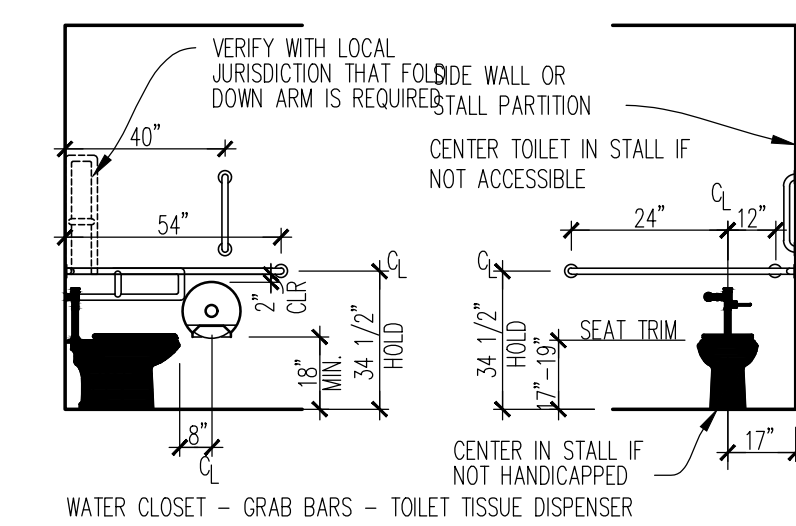
02 MEN'S RM 103
SCALE: 1/4" = 1'-0"



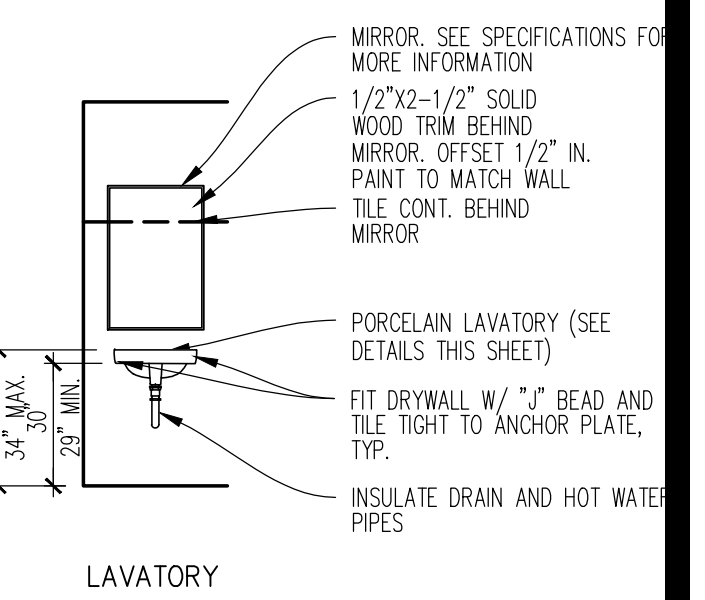
01 MEN'S RM 103
SCALE: 1/4" = 1'-0"



00 TYPICAL RESTROOM ACCESSORIES
SCALE: 1/4" = 1'-0"



NOTE CONTRACTOR TO PROVIDE 2X6 WOOD BLOCKING IN WALL FOR ANCHORAGE OF GRAB BARS AS REQUIRED.



Wendy's
#08452 (STARBOARD #469)
648 BARNES BLVD.
ROCKLEDGE, FL 32955

REV.	DATE	DESCRIPTION

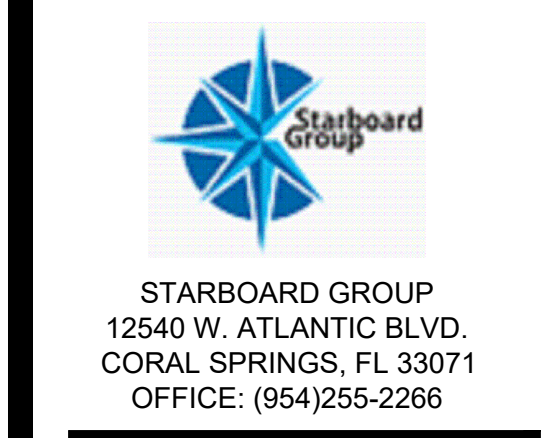


SHEET NAME
INTERIOR ELEVATIONS RESTROOMS

SHEET NUMBER
A7.2

SITE NUMBER:	08452
BUILDING TYPE:	E200
ASSET TYPE:	FREESTANDING
CLASSIFICATION:	REFRESH
OWNER:	STARBOARD
BASE VERSION:	2021 SPRING
UPGRADE CLASSIFICATION:	N/A
PROJECT YEAR:	2022
DESIGN TYPE:	(2.0) UM BRIGHT
DRAWING RELEASE:	2021 SPRING

Linear Architecture LLC
Philip Kemery,
Architect
4436 Harvest Hill Rd.
Dallas, TX 75244
PHONE: 972.929.9226



1/8/2022, 11:20 AM, C:\Users\choc\OneDrive - Linear Architecture - Starboard\12540 Atlantic Blvd\08452 Rockledge, FL (Rev)01\Construction Documents\03_A7_Interior Elevations.dwg, I:\Info