

SITE NUMBER:	08452
BUILDING TYPE:	E2000
ASSET TYPE:	FREESTANDING
CLASSIFICATION:	REFRESH
OWNER:	STARBOARD
BASE VERSION:	2021 SPRING
UPGRADE CLASSIFICATION:	N/A
PROJECT YEAR:	2022
DESIGN TYPE:	(2.0) UM BRIGHT
DRAWING RELEASE:	2021 SPRING

Linear Architecture LLC
Philip Kemery,
Architect
4436 Harvest Hill Rd.
Dallas, TX 75244
PHONE: 972.929.9226



STARBOARD GROUP
12540 W. ATLANTIC BLVD.
CORAL SPRINGS, FL 33071
OFFICE: (954)255-2266

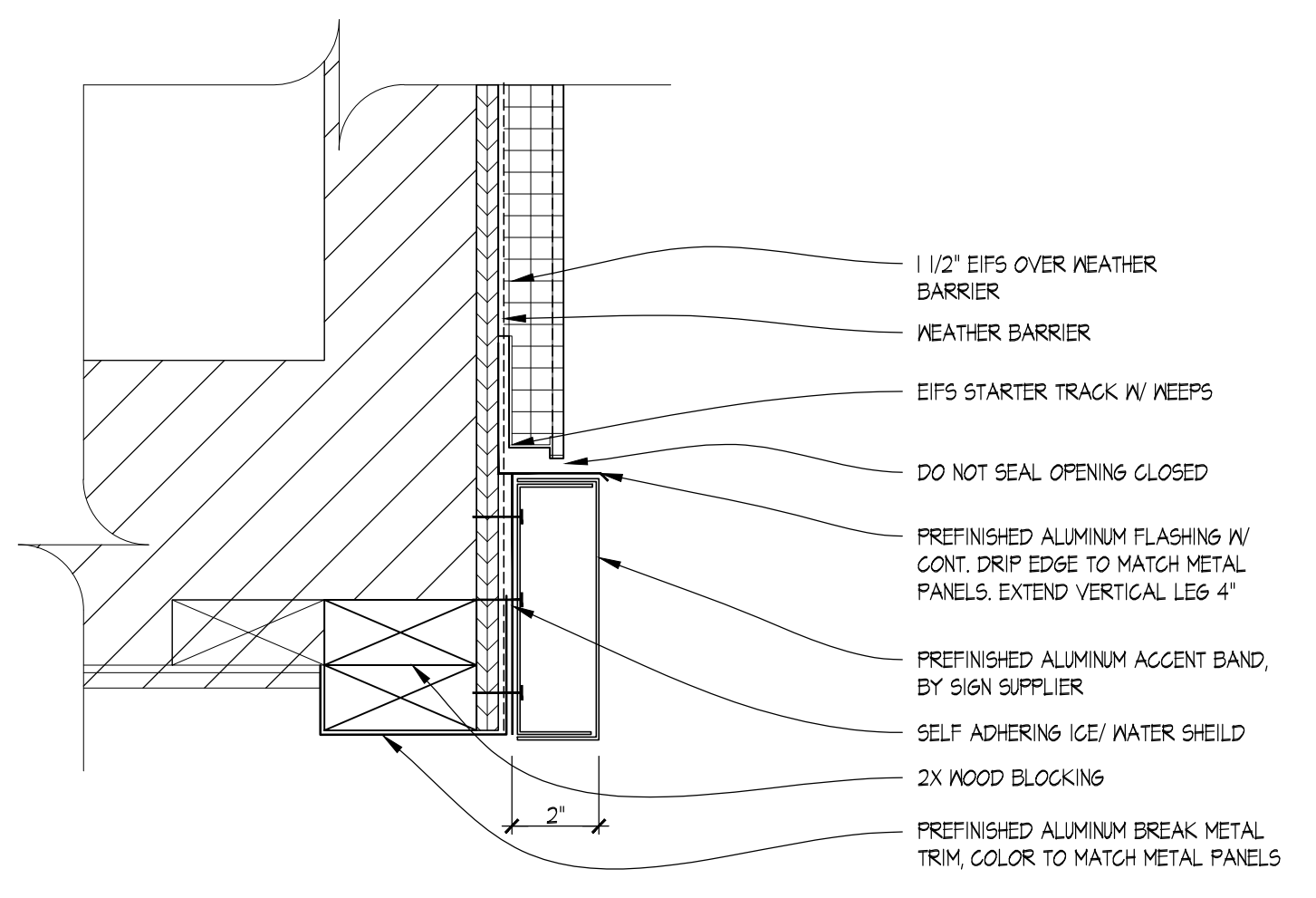
Wendy's
#08452 (STARBOARD #469)
648 BARNES BLVD.
ROCKLEDGE, FL 32955

REV.	DATE	DESCRIPTION

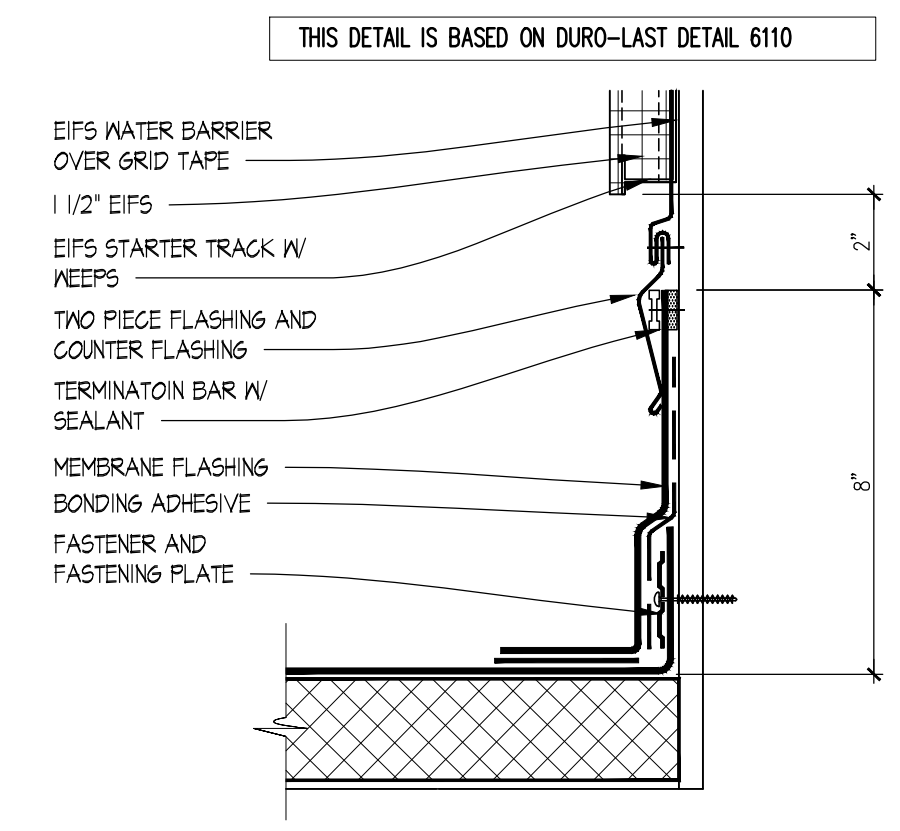
ISSUE DATE: 01/03/2022
PROJECT NUMBER: 21-125
DRAWN BY: XXX
CHECKED BY: XXX



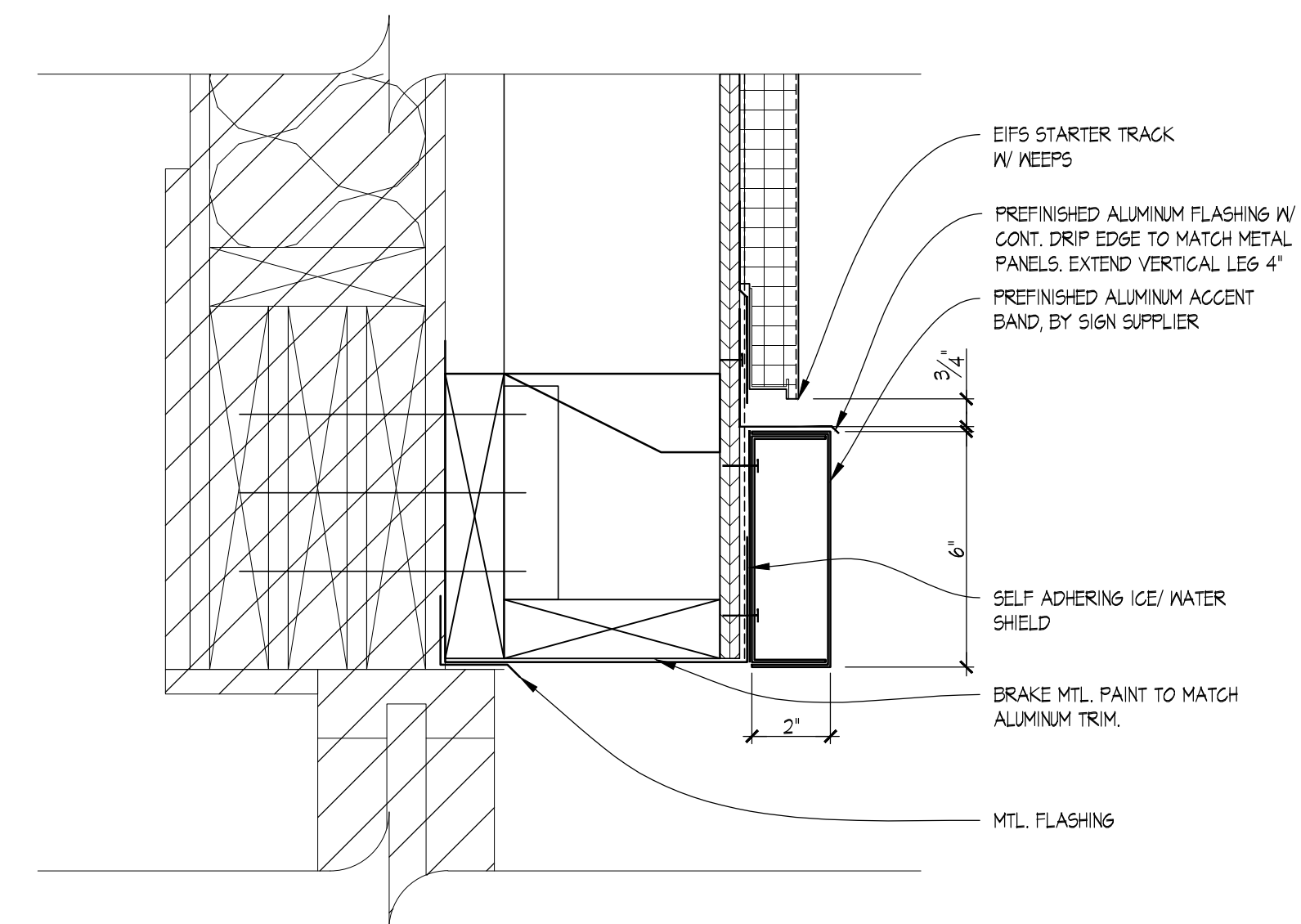
SHEET NAME
SECTION DETAILS
SHEET NUMBER
A4.1
EIFS



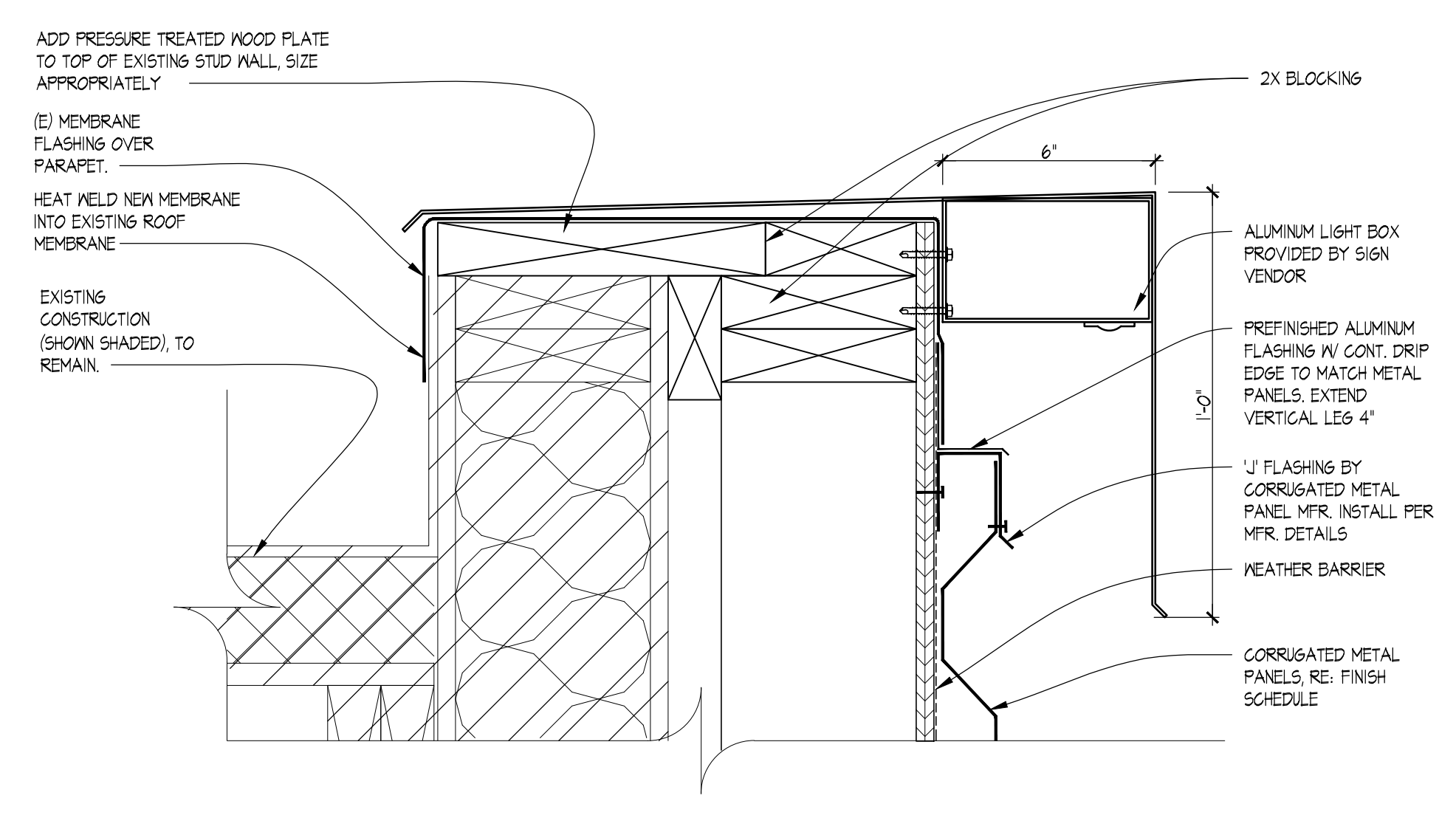
06 ALUMINUM TRIM DETAIL
SCALE: 3" = 1'-0"



03 SECTION DETAIL
SCALE: 3" = 1'-0"



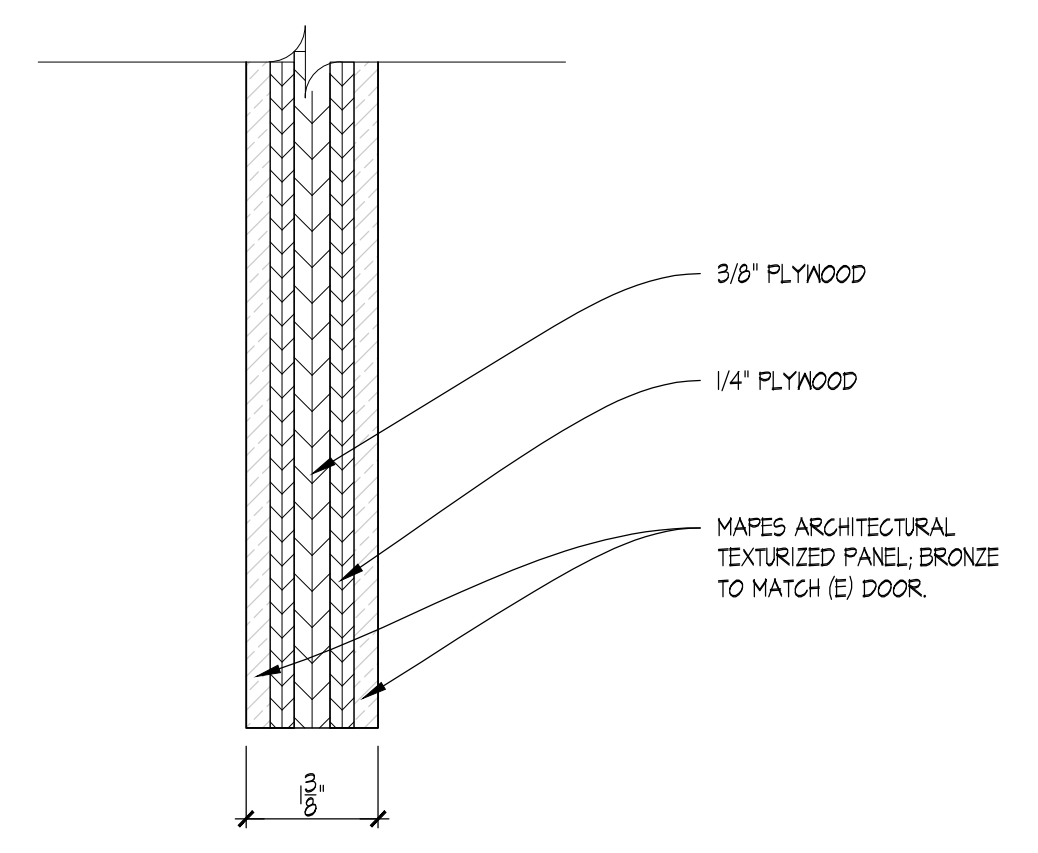
05 ALUMINUM TRIM DETAIL
SCALE: 3" = 1'-0"



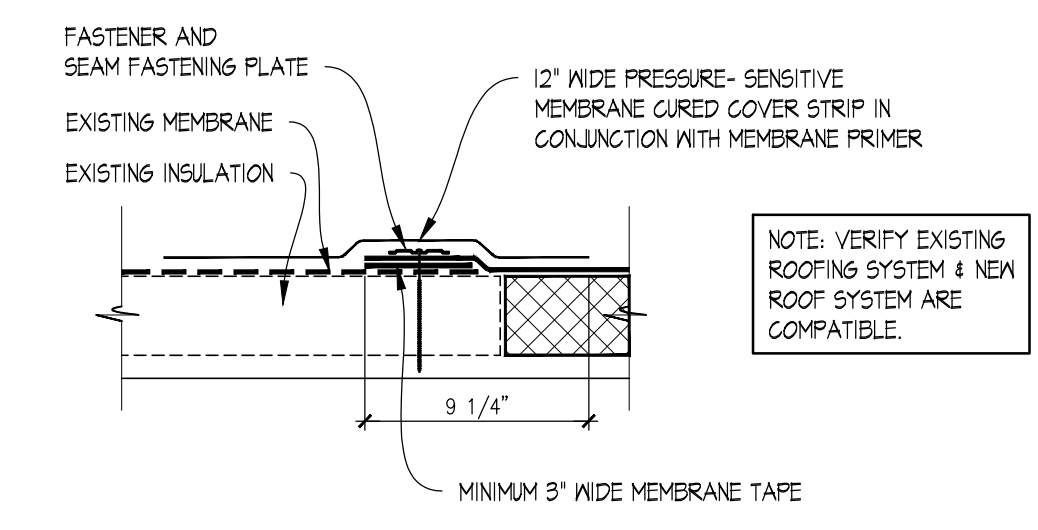
02 SECTION DETAIL
SCALE: 3" = 1'-0"

09 NOT USED
SCALE: 1 1/2" = 1'-0"

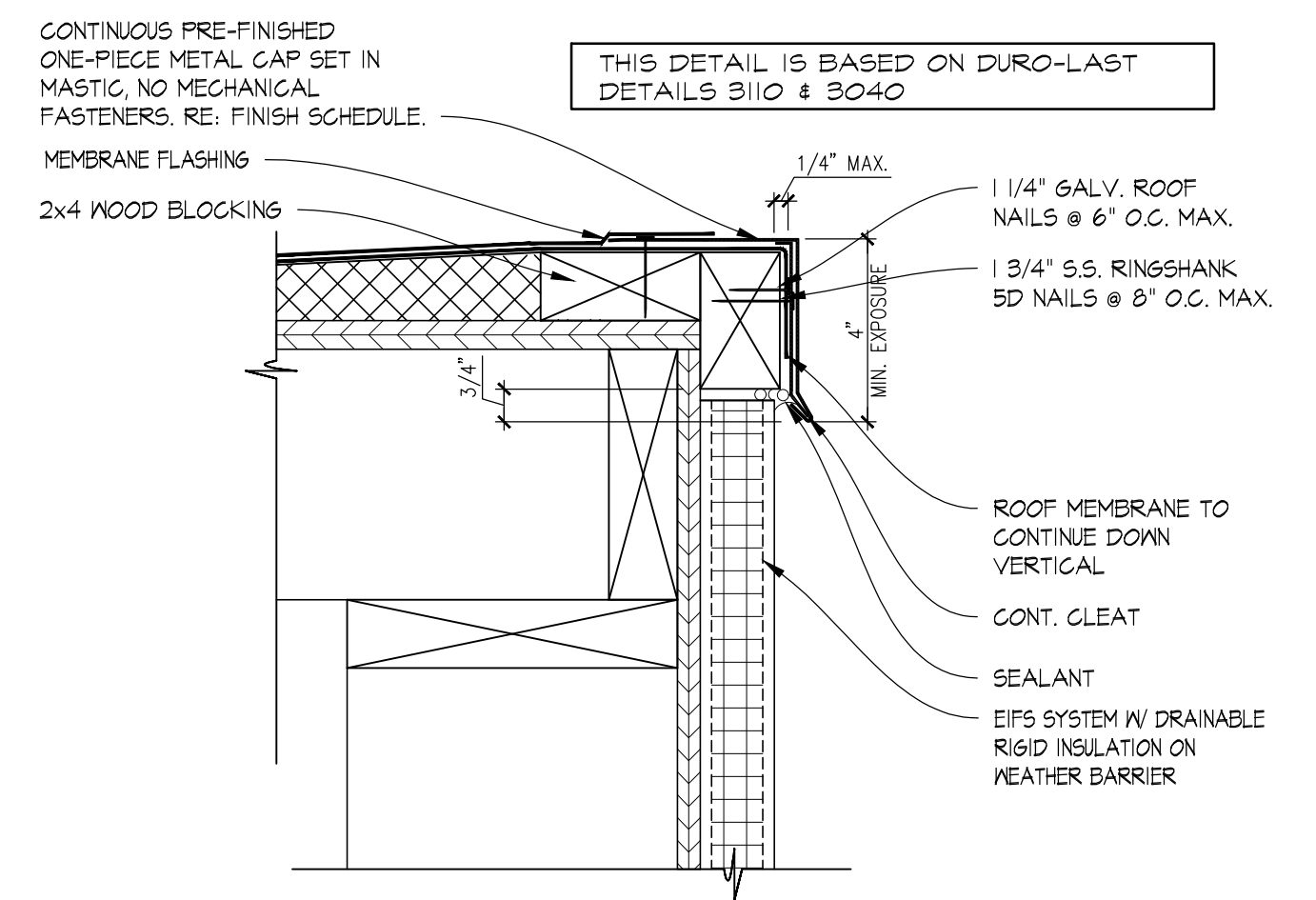
08 NOT USED
SCALE: 1 1/2" = 1'-0"



07 DOOR PANEL INSERT DETAIL
SCALE: 6" = 1'-0"



04 ROOF SEAM DETAIL
SCALE: 1 1/2" = 1'-0"



01 SECTION DETAIL
SCALE: 3" = 1'-0"

14/2022 1:43 PM C:\Users\pko\OneDrive - Linear Architecture, Inc\Public\WENDY'S\21-125 Starboard.dwg (Starboard) (Construction Documents)03_A4.1 DETAILS EIFS.dwg (10/30)