

SITE NUMBER:	0201
BUILDING TYPE:	CG34E
ASSET TYPE:	FREESTANDIN
CLASSIFICATION:	REFRES
OWNER:	STARBOAR
BASE VERSION:	2021 SPRIN
UPGRADE CLASSIFICATION:	
PROJECT YEAR:	202
DESIGN TYPE:	(2.0) UM BRIGH
DRAWING RELEASE:	2021 SPRIN

Linear Architecture LLC
Philip Kemery,
Architect
4436 Harvest Hill Rd.
Dallas, TX 75244
PHONE: 972.929.9226

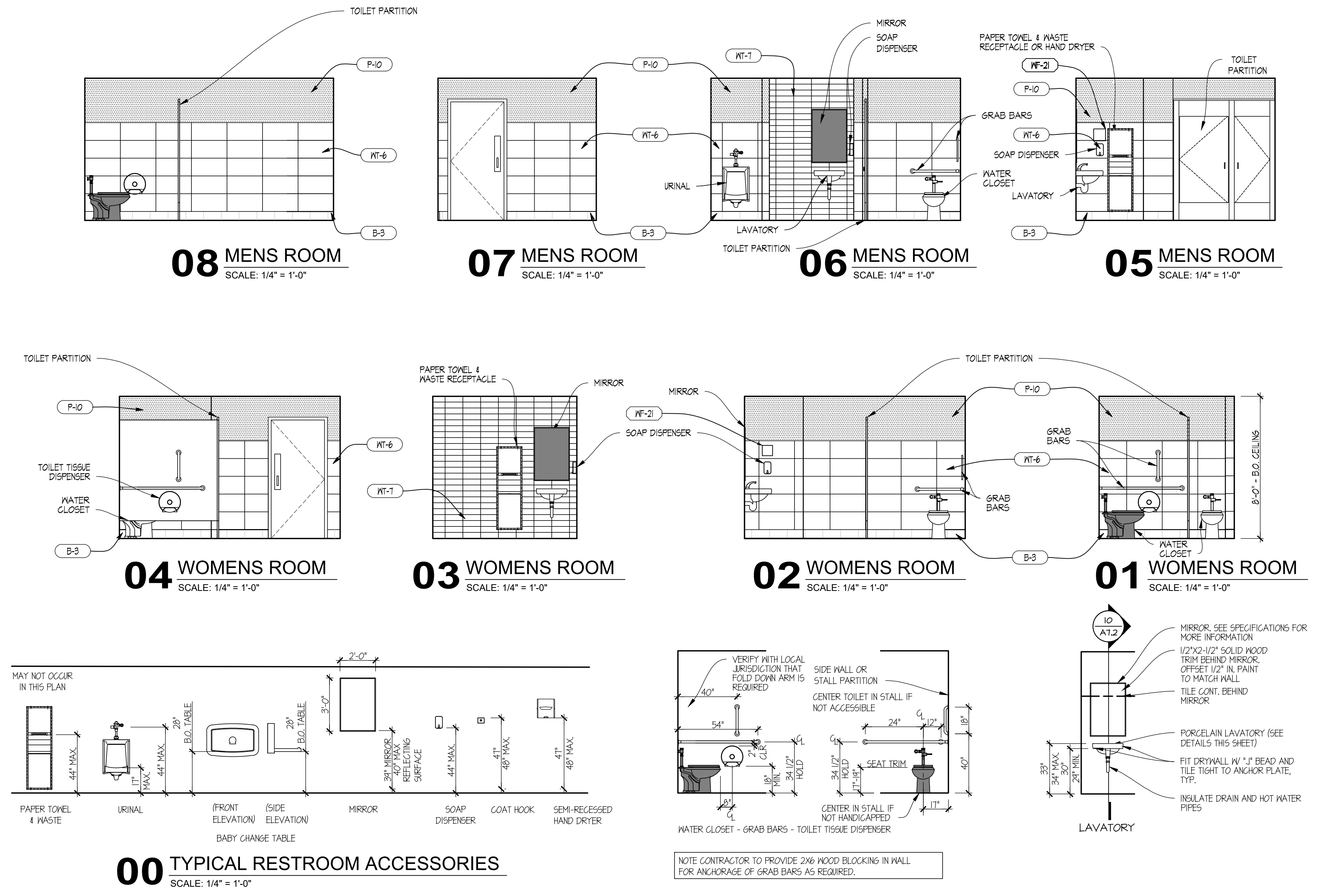
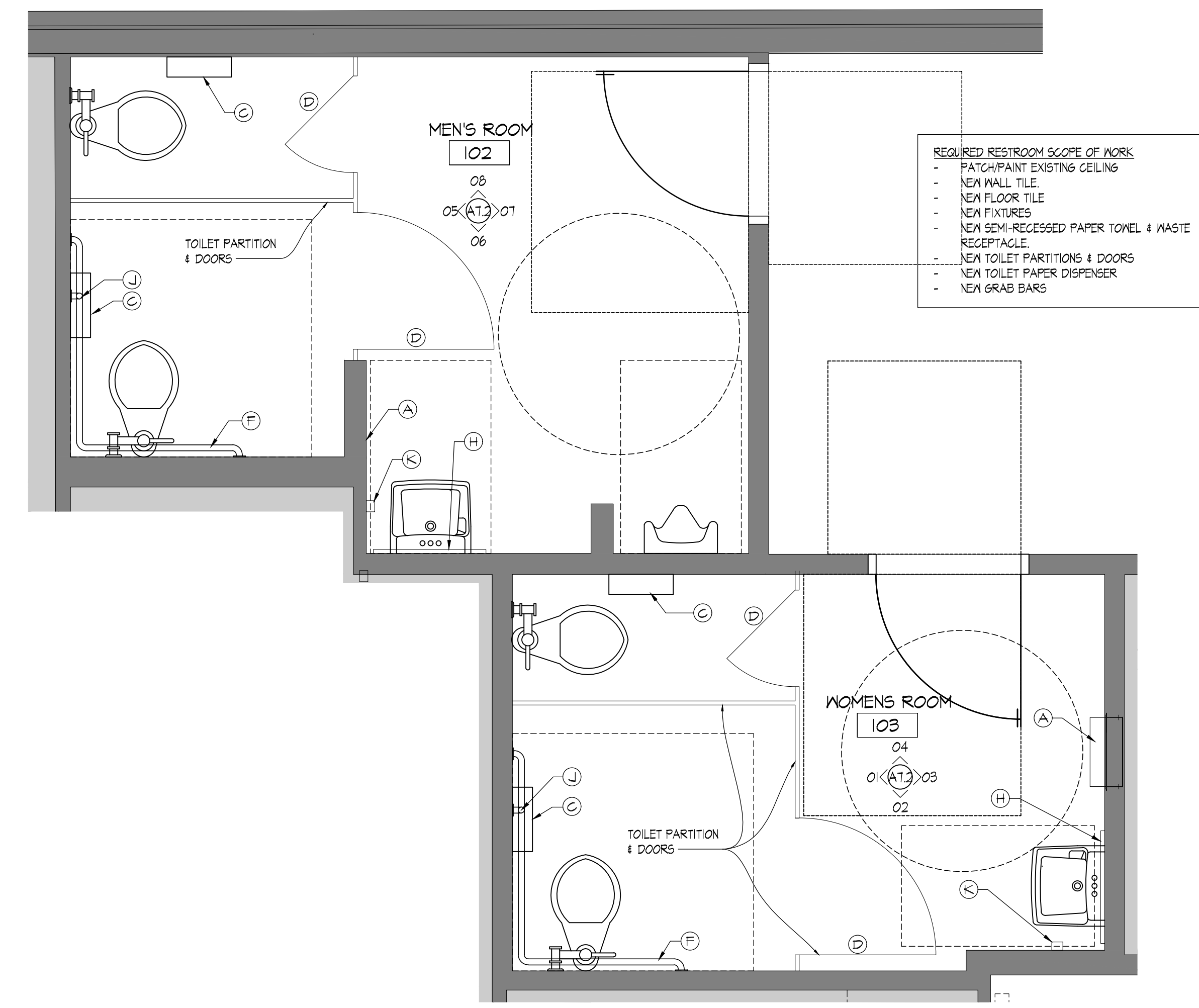
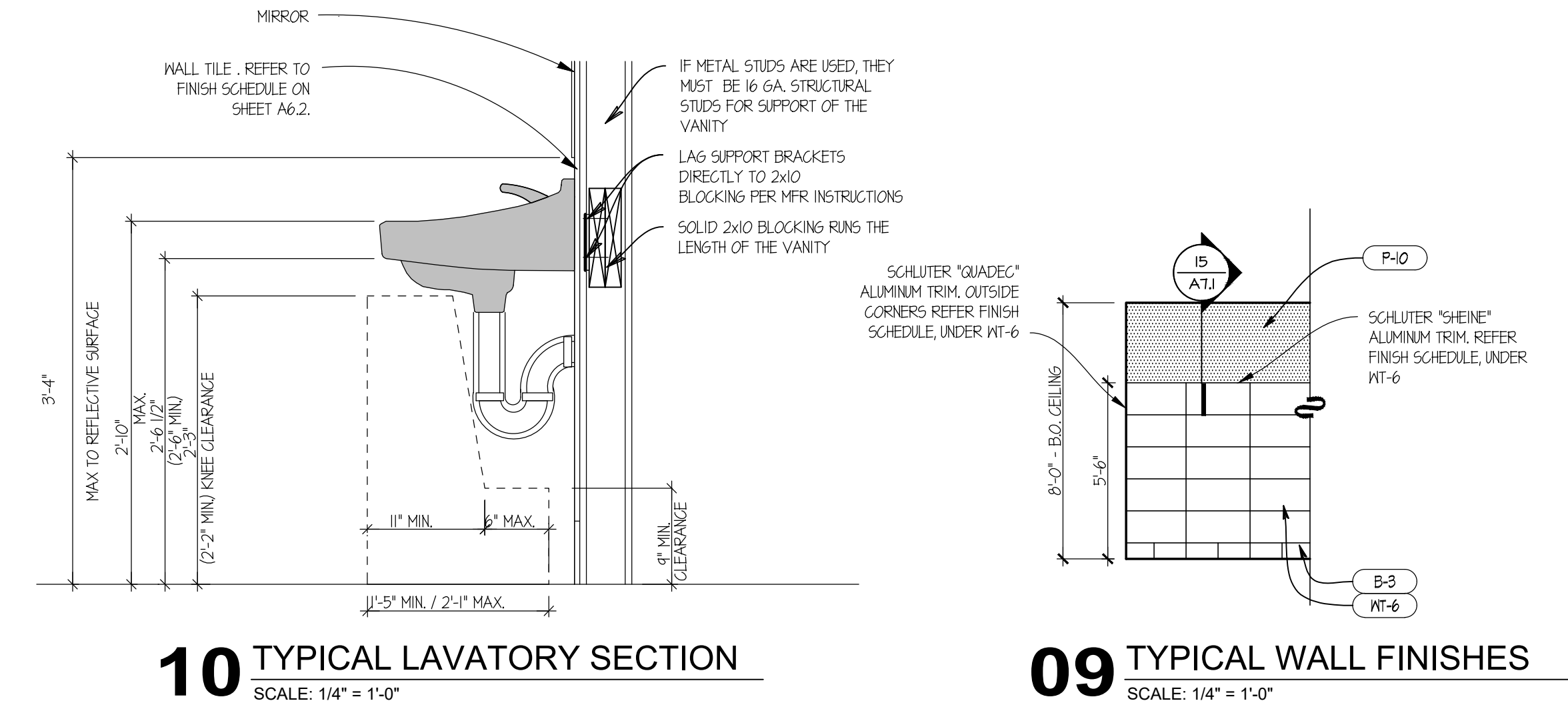


- ### RESTROOM SCOPE
- REMOVE EXISTING PLUMBING FIXTURES AND RESTROOM ACCESSORIES AS REQUIRED FOR INSTALLATION OF NEW FINISHES. VERIFY W/ OWNER'S REPRESENTATIVE IF ITEMS ARE TO BE STORED AND REUSED.
 - REFER TO DESIGN GUIDE FOR COMPLIANT EXISTING WALL TILE TO REMAIN.
 - REMOVE EXISTING FLOOR & WALL FINISHES THROUGHOUT THE RESTROOMS, AS REQUIRED FOR NEW FINISHES. CLEAN, PREP, & REPAIR SUBSTRATES TO SPECIFICATION REQUIREMENTS OF NEW SCHEDULED FINISHES. REPLACE DAMAGED SUBSTRATES AS REQUIRED, DO NOT ADD LAYERS OF SUBSTRATE.
 - REMOVE EXISTING TOILET PARTITIONS AND ASSOCIATED HARDWARE. VERIFY W/ OWNER'S REPRESENTATIVE IF ITEMS ARE TO BE STORED AND REUSED.
- ### RESTROOM ELEVATIONS GENERAL NOTES
- FIELD VERIFY AND/OR PROVIDE ADDITIONAL REQUIREMENTS TO PROVIDE ACCESSIBILITY PER LOCAL CODE AND THE ADA STANDARDS.
- NOTE: SEE SHEET A11 FOR ART PACK SCHEDULE

RESTROOM FIXTURE AND HARDWARE SCHEDULE

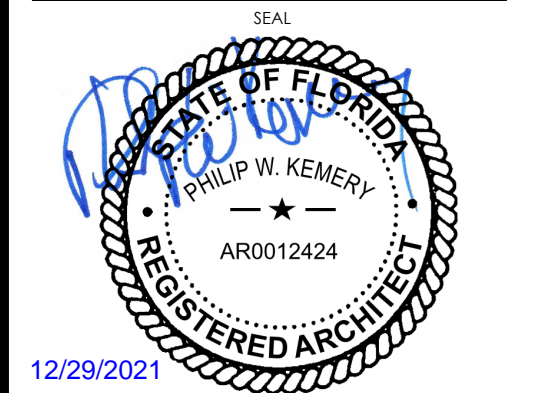
MARK	QTY	DESCRIPTION	MODEL	FINISH	NOTES
A		SEMI-RECESSED PAPER TOWEL & WASTE RECEPTACLE	AGI 646P24A (SEMI-RECESSED) PAPER ROLL AUTOMATIC DISPENSING OR BOBRICK B-3414 (SEMI-RECESSED) PAPER ROLL AUTOMATIC DISPENSING	STAINLESS STEEL	
B		NEW SEMI-RECESSED HAND DRYER, OPTIONAL FOR FRANCHISEE RESTAURANTS.	AGI 10-01M11 SURFACE MOUNTED STAINLESS STEEL HAND DRYER		
C		TOILET PAPER DISPENSER, SURFACE MOUNTED JUMBO ROLL TOILET TISSUE DISPENSER	AGI MODEL NO. 0042	SATIN	OUTER CABINET, STAINLESS STEEL
D		COAT HOOK	BRADLEY 9114 SATIN STAINLESS STEEL HOOK	SATIN	SEE PLAN FOR LOCATIONS
E		BABY CHANGING STATION	KOALA KARE PRODUCTS KB200-00	CREAM	REFER TO MANUFACTURER FOR INSTALLATION
F		TWO WALL TOILET COMPARTMENT GRAB BAR 1/4" DIAMETER	AGI - 3800 TYPE 51	SATIN	STAINLESS STEEL W/ EXPOSED MOUNTING, FURNISHED COMPLETE W/ MOUNTING KIT
G		NOT USED			
H		MIRROR	MEEK M2518 24 X 36 MIRROR	SATIN	STAINLESS STEEL - ANGLE FRAMED W/ WELDED CORNERS
J		18" VERTICAL GRAB BAR	MAINLINE PB2912	SATIN	STAINLESS STEEL W/ EXPOSED MOUNTING, FURNISHED COMPLETE W/ MOUNTING KIT
K		WALL MOUNTED 'ECOLAB' HANDS-FREE SOAP DISPENSER		BLACK	SUPPLIED BY KED (G0204)
L		NOT USED			
M		NOT USED			

NOTE: REFER TO SUPPLIER SHEET FOR BUILDING MATERIAL CONSOLIDATOR CONTACT INFORMATION.



Wendy's
#02011 (STARBOARD #402)
1197 SOUTH MILITARY TRAIL
DADEFIELD BEACH, FL 33442

REV.	DATE	DESCRIPTION



SHEET NAME
INTERIOR ELEVATIONS RESTROOMS

SHEET NUMBER
A7.2

12/29/2021, 10:44 AM, C:\Users\mgifford\OneDrive\Documents\Projects\Starboard\1197 South Military Trail\Starboard\1197 South Military Trail.dwg, INTERIOR ELEVATIONS.dwg, ipmlin