

**WALK - IN SPECIFICATIONS**



Cooler/Freezer  
**OVERALL SIZE: 20'-2 1/2" X 9'-8" X 8'-6 1/4" (INDOOR)**

**PANELS**  
 FOAMED IN PLACE URETHANE FOAM 4"

**EXTERIOR FINISH**  
 WALL: ALUMINUM - NATURAL EMBOSSED - .040  
 TOP: GALVALUME - EMBOSSED 26 GA  
 FLOOR: GALVALUME - EMBOSSED 26 GA

**INTERIOR FINISH**  
 WALL: ALUMINUM - NATURAL EMBOSSED - .040  
 TOP: ALUMINUM - NATURAL EMBOSSED - .040

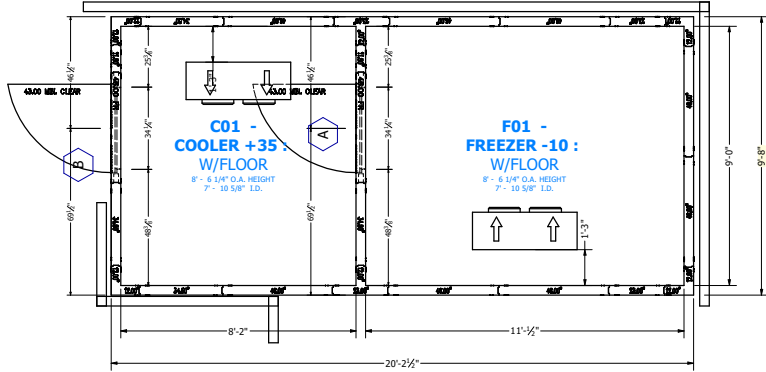
**FLOOR TYPE**  
 F01 FREEZER -10 :  
 STANDARD 1000A ERA  
 STAINLESS STEEL - T304 2B 16GA.

C01 COOLER +35 :  
 STANDARD 1000A ERA  
 STAINLESS STEEL - T304 2B 16GA.

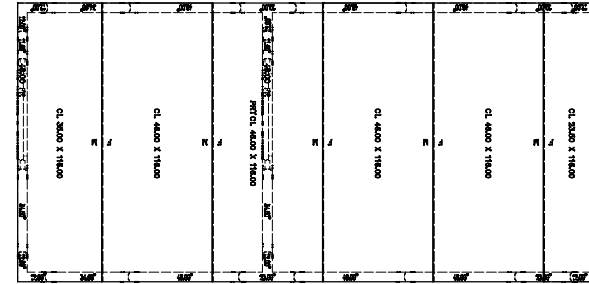
**WALK-IN ACCESSORIES**  
 (3) LIGHT FIXTURE - KASON 1809 LED  
 (2) TRIM ANGLED 3" X 3" X 6FT ALUMINUM EMBOSSED .040

**REFRIGERATION**  
 F01 FREEZER -10 :  
 KRCL249L0P-3E, R404A, VOLTS: 208-230-60-1,RTU:8158  
 KEL38-090-2EC-PCL-4 VOLTS: 208-230-60-1,RTU:9508  
 TEMP: WALK-IN -10,AMBIENT TEMP: 90

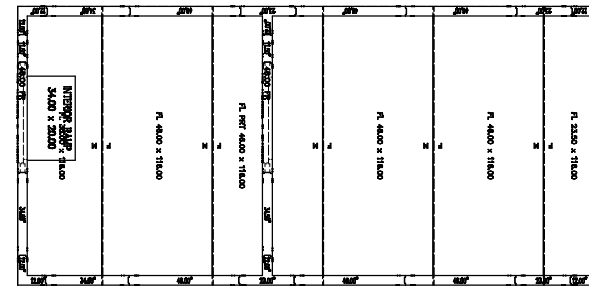
C01 COOLER +35 :  
 KRCL249L0P-3E, R404A, VOLTS: 208-230-60-1,RTU:6533  
 KAN26-073-3EC-PCL-4 VOLTS: 115-60-1,RTU:7337  
 TEMP: WALK-IN 35,AMBIENT TEMP: 90



WALLS LAYOUT



CEILINGS LAYOUT



FLOORS LAYOUT

**ATTENTION**

- SUBMITTAL DRAWING NOT INTENDED FOR INSTALLATION.
- AS-BUILT DRAWING FOR INSTALLATION WILL BE AVAILABLE AFTER ORDER IS PLACED. HARD COPY OF AS-BUILT DRAWING WILL BE IN HARDWARE BOX WITH WALK-IN EQUIPMENT TO JOBITE. ALL AS-BUILT DRAWINGS SHOW PART NUMBERS AND ID LABELS ON PLAN VIEWS.
- ALL WALK-INS ARE DESIGNED FOR INDOOR APPLICATION UNLESS NOTED OTHERWISE.
- PERFUME DISPENSERS AND SEALING OF ARE THE RESPONSIBILITY OF OTHERS.
- ALLOW 2" MINIMUM CLEARANCE WITH AIRFLOW OF 5 CFM PER 100 SQ FT AROUND ENTIRE PANEL SURFACES. INDOOR WALK-INS REQUIRE A 20% AMBIENT AND 5% RELATIVE HUMIDITY OR LESS AROUND THE EXTERIOR OF THE WALK-IN.
- GENERAL CONTRACTOR TO REFER TO DESIGN AND SPECIFICATION MANUAL FOR FLOOR DETAIL INFORMATION.
- CONCRETE FLOOR APPLICATIONS: METAL PANEL FINISHING MAY BE SUSCEPTIBLE TO STAINING DUE TO EXCESSIVE MOISTURE CREATED BY THE HYDRATION OF CONCRETE TYPE MATERIALS. IT IS ABSOLUTELY NECESSARY THAT EACH ROOM BE PROPERLY VENTILATED. SPECIAL PRECAUTIONS MUST ALSO BE TAKEN WHEN USING URIMATIC ACID DUE TO EFFECTS HYDROCHLORIC FUMES HAVE ON METAL MATERIALS.
- PANEL LAYOUT MAY CHANGE BASED ON OPTIMAL MANUFACTURING STANDARDS.
- WALK-IN TOP IS NOT DESIGNED FOR FOOT TRAFFIC OR STAIRCASES UNLESS NOTED OTHERWISE.
- IF CONDENSING UNIT IS LOCATED IN THE INTERIOR OF BUILDING A MINIMUM OF 24" OF CLEARANCE IS REQUIRED AROUND TOP AND SIDES OF FLOOR CURBS AND NOT EXPOSED TO AIR.
- IF CONDENSING UNIT IS LOCATED IN THE INTERIOR OF BUILDING A MINIMUM OF 24" OF CLEARANCE IS REQUIRED AROUND TOP AND SIDES OF FLOOR CURBS AND NOT EXPOSED TO AIR.
- DESIGNER OR PREPARATION OF THE INSULATED FLOOR, SUB-SLAB OR CURBS, WITHOUT HAVING THE DESIGN REVIEWED BY A QUALIFIED ENGINEER. ALL FOOTINGS, FOUNDATION WALLS AND CONCRETE WEAR SLABS ARE THE RESPONSIBILITY OF THE BUILDING ENGINEER OR ARCHITECT.
- THE FOAM PLASTIC USED IN THIS SECTION COMPLES TO THE IBC SECTION 2603 AS FOLLOWS: FLAME SPREAD RATING: 20; SMOKE DEVELOPMENT RATING: 450; FASH IGNITION TEMPERATURE RATING: 105°F; SPONTANEOUS IGNITION TEMPERATURE RATING: 590°F.
- IF VALUES MEET CODE REQUIREMENTS AND ARE ASTM C518 TESTED. COOLER R-VALUES ARE 2.9 FOR 4" THICK, 6.36 FOR 5" THICK, AND 8.64 FOR 6" THICK PANELS. FREEZER R-VALUES ARE 6.32 FOR 4" THICK, 8.48 FOR 5" THICK, 10.48 FOR 6" THICK PANELS, AND 8.29 FOR 4" FLOORS.
- FLOORS NOT DESIGNED FOR WET MOPPING, PALLET JACKS, OR FORKLET TRAFFIC.

**FOR APPROVAL**  
 YOU MUST REVIEW ALL NOTES, DETAILS, DIMENSIONS, FINISHES, DOORS SIZES, LOCATIONS AND SWINGS

APPROVAL: NO CHANGE REQUIRED, MANUFACTURE AS DRAWN.

APPROVED AS NOTED: MAKE REQUIRED CHANGES AND MANUFACTURE AS DRAWN.

NOT APPROVED: DESIGN CHANGES REQUIRE DRAWING REVISION AND RESUBMISSION.

DATE: \_\_\_\_\_ BY: \_\_\_\_\_

**SMOOTH FINISH DISCLAIMER**

Panels with non-textured and/or no-profile panel finishes (smooth finishes) on the exterior and interior faces may exhibit "oil canning" and flatness imperfections on the surface. Our standard panels have a stucco embossed texture on both faces that helps to reduce oil canning and any other irregularities in the exposed surface. Please be aware of this potential situation in your specification process. Such "oil canning" and flatness issues are typical and are not covered under standard warranties.

**NOTICE:**

- Kolpak and Harford walk-ins are compliant with UL standards.
- Door panels are UL471, UL file listing E46140.
- Standard Evaporator coils are UL412.
- Condensing Units are UL1995.

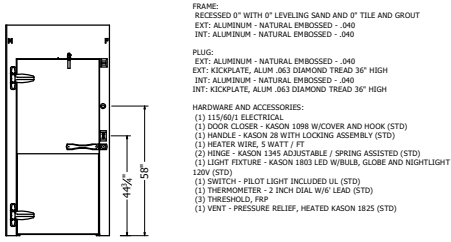
DRAWING #: A1892008R1  
 UNIT #: 001  
 ORDER #:



BK - GROVE CITY, OH.  
 GROVE CITY, OH 43133 USA

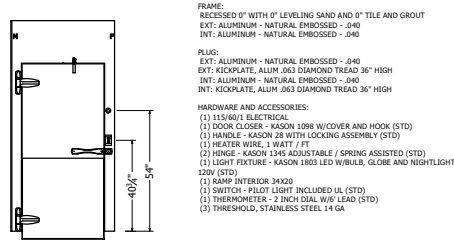
**H & K INTERNATIONAL**

DATE	REVISION	BY	CHKD



DR 34.00" x 78.00"  
FR 46.00" x 94.25"

DW-1



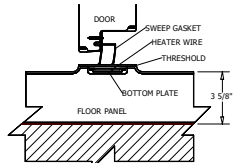
DR 34.00" x 78.00"  
FR 46.00" x 94.25"

DW-2

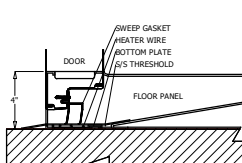


DOOR ELECTRICAL INFORMATION				
DESCRIPTION	QTY	VOLT	AMP	AMP LOAD
HEATED AIR VENT	1	115	0.04	0.04
HEATER WIRE	1	115	0.8	0.8
LED LIGHT	1	115	0.1	0.1
115 VOLT, SINGLE PHASE, 60 HZ, TOTAL DOOR AMPS:				0.94

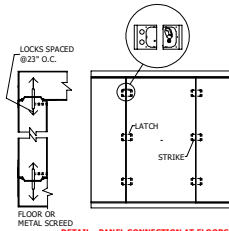
DOOR ELECTRICAL INFORMATION				
DESCRIPTION	QTY	VOLT	AMP	AMP LOAD
HEATER WIRE	1	115	0.2	0.2
LED LIGHT	1	115	0.1	0.1
115 VOLT, SINGLE PHASE, 60 HZ, TOTAL DOOR AMPS:				0.3



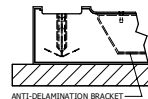
1 DETAIL - 4IN PRT FLOOR-HTR WIRE  
Scale: NTS



2 DETAIL - 4IN FLOOR-RAMP  
Scale: NTS

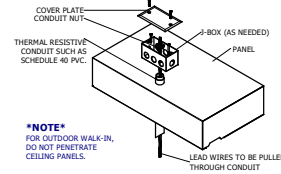


3 DETAIL - PANEL CONNECTION AT FLOORS OR METAL SCREEDS  
Scale: NTS



4 DETAIL - FOOT-LIGHT ROLLING CART FLOOR CONSTRUCTION  
Scale: NTS

AT EVERY ENTRANCE CONDUIT, FORCE SEALANT AROUND THE EXTERIOR OF THE ELECTRICAL CONDUIT AND INSIDE THE CONDUIT AROUND THE WIRES. FAILURE TO ELIMINATE AIRFLOW IN THE CONDUIT WILL ALLOW MOISTURE TO DAMAGE ELECTRICAL COMPONENTS ESPECIALLY LIGHTS WHICH WILL NOT BE COVERED UNDER WARRANTY.



5 DETAIL - ELECTRICAL CONDUIT PENETRATION  
Scale: NTS

COMPARTMENT		CONDENSING UNIT																						
DESCRIPTION	TEMP F		MODEL#	REFRIGERANT	COMPRESSOR TYPE	DIMENSIONS				COMPRESSOR				CONDENSER FAN MTR			TOTAL AMPS	MX AMP DISC	CONNECTIONS O.D.		RCV CAP @ 90% FULL (lbs)			
	WI	QTY				L (A)	W (B)	H (C)	LBS	HP	RLA	LRA	V	HZ	Φ	FLA			V	Φ		SUCT	LIQ	
F01 FREEZER -10	-10	1	KPCL249LOP-3E	R404A	HERMETIC	33	40.125	22.25	213	2 1/2	10.2	72.2	208-230	60	3	2.2	9.8	208-230	1	12.6	25	7/8	3/8	13.6
C01 COOLER +35	+35	1	KPCL69MOP-2E	R404A	HERMETIC	33	25.5	19.25	151	3/4	6.8	33.7	208-230	60	1	0.5	208-230	1	7.4	15	5/8	3/8	5.8	

COMPARTMENT		UNIT COOLER															
DESCRIPTION	TEMP F		MODEL # (DEFROST: A-AIR E-ELECTRIC)	REFRIGERANT	DIMENSIONS				FAN			HEATER			CONNECTIONS O.D.		
	WI	QTY			L (D)	W (E)	H (F)	LBS	TOTAL AMPS	V	TOTAL AMPS	V	Φ	SUCT	LIQ	DRAIN	
F01 FREEZER -10	-10	1	KEL26-090-2EC-PCL-4	R404A	43.625	15.5	16.75	58	1	208-230	9.8	208-230	1	7/8	3/8	3/4	
C01 COOLER +35	+35	1	KAM26-073-1EC-PCL-4	R404A	43.625	15.5	16.75	52	1.6	115	0	N/A	0	5/8	3/8	3/4	

CONDENSING UNIT ASSEMBLY	CLEARANCE REQUIREMENT
<p>EVAPORATOR - MODEL AM, EM, EL, AMB, ELB</p>	<p>12" MINIMUM CLEARANCE REQUIRED FOR PROPER OPERATION</p> <p>30" REQUIRED FOR SERVICE</p> <p>AIR FLOW</p>
<p>ELECTRICAL CONNECTIONS (ON REAR)</p> <p>LIQUID CONNECTION (ON REAR)</p> <p>SUCTOR CONNECTION (ON REAR)</p> <p>HOT VAPOR</p>	

DESCRIPTION	QTY	VOLT	AMP	AMPLoad
HEATEDAIRVENT	1	115	0.04	0.04
HEATERWIRE	1	115	0.8	0.8
LEDLIGHT	1	115	0.1	0.1
115 VOLT, SINGLE PHASE, 60 Hz, TOTAL DOORAMPS:				0.94

DESCRIPTION	QTY	VOLT	AMP	AMPLoad
HEATERWIRE	1	115	0.2	0.2
LEDLIGHT	1	115	0.1	0.1
115 VOLT, SINGLE PHASE, 60 Hz, TOTAL DOORAMPS:				0.3