

PLUMBING FIXTURE SCHEDULE					
MARK	FIXTURE	MANUFACTURER	MODEL NUMBER	MODEL NAME	VALVE
P-1	WATER CLOSET	* REFER TO SHEET A-3.1 FOR IMAGE SPECIFIC FIXTURES			
P-2	WATER CLOSET - ADA	* REFER TO SHEET A-3.1 FOR IMAGE SPECIFIC FIXTURES			
P-3	URINAL - ADA	* REFER TO SHEET A-3.1 FOR IMAGE SPECIFIC FIXTURES			
P-4	LAVATORIES	* REFER TO SHEET A-3.1 FOR IMAGE SPECIFIC FIXTURES			
P-5	MOP SINK	CAST IN PLACE		CHICAGO #897-CP -OR- AMERICAN STANDARD #8344.111 -OR- KOHLER #8907	
P-6	WATER HEATER	RINNAI -OR- RINNAI	C1991 RUR981	REU-KBD3237FFUDC-US REU-KBP3237FFUD-US	
P-7	TEMPERING VALVE	WATTS	NI70L-M2		
P-8	FLOOR SINK	JOSAM J.R. SMITH ZURN	49300 (49320A AT 3-COMP SINK) 3100 (3111 AT 3-COMP SINK) Z1910 (Z1900 AT 3-COMP SINK)		
P-9	FLOOR DRAIN	JOSAM J.R. SMITH ZURN	30000-50 2010-AP Z-415B-P		

NOTES:
 1. COMPARABLE FIXTURES BY AMERICAN STANDARD, ELJER AND KOHLER ARE ACCEPTABLE.
 2. TOILET SEATS TO BE CHURCH 9500SSC, KOHLER K-4671-C, OLSONITE #10C OR EQUAL.
 3. IN SINGLE USE RESTROOMS ALL FIXTURE MUST BE ADA COMPLIANT.

No.	Date	By	Notes
3	5/26/21	DB	PLANNING SUBMITTAL
4	7/07/21	DB	BUILDING SUBMITTAL
5	8/27/21	AS	BUILDING REVISIONS
6	10/29/21	AS	ENGINEERING REVISIONS
7	12/10/21	AS	BUILDING REVISIONS 2

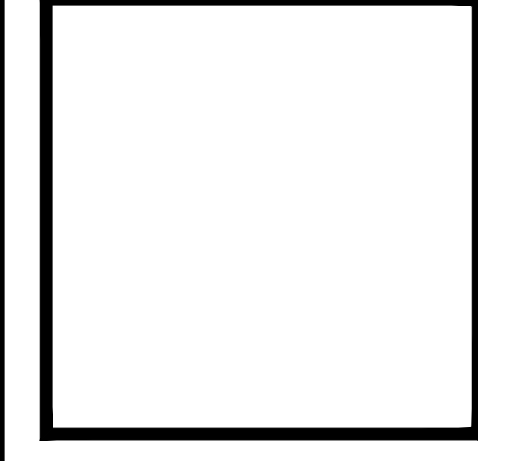
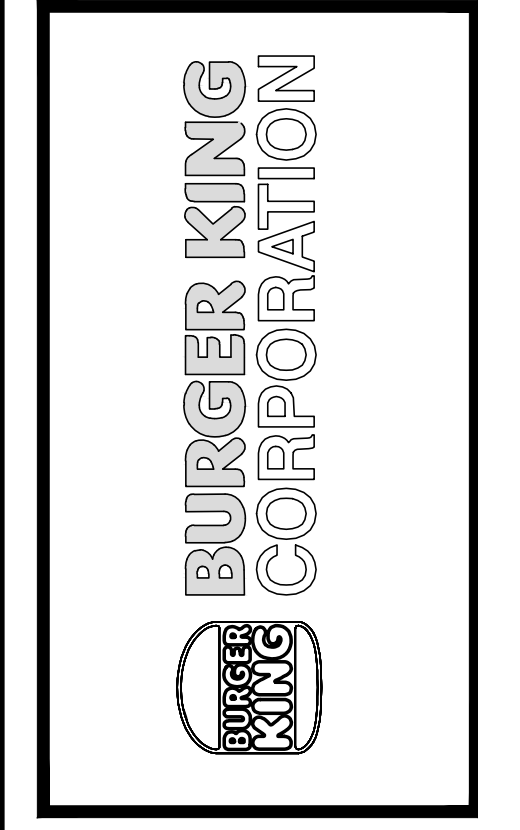
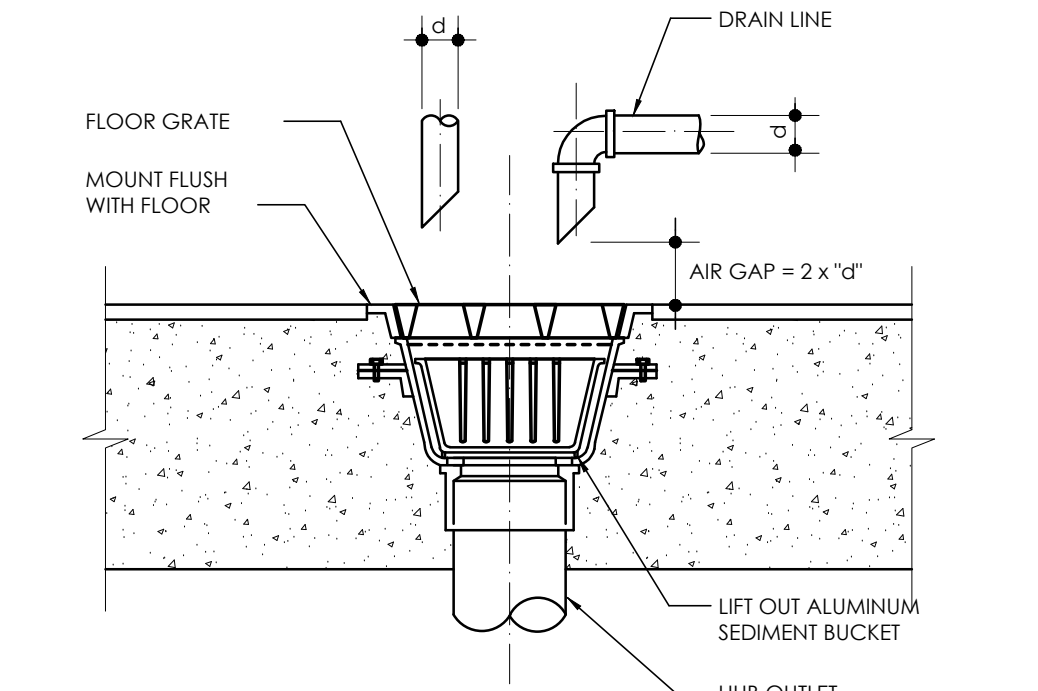
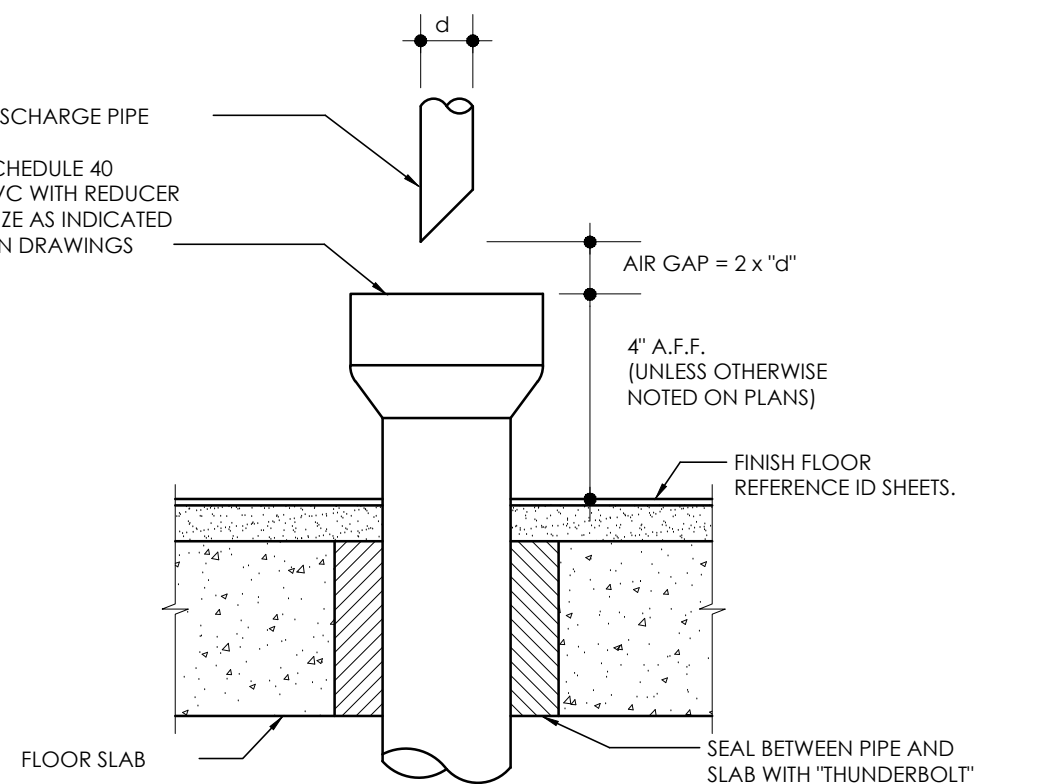
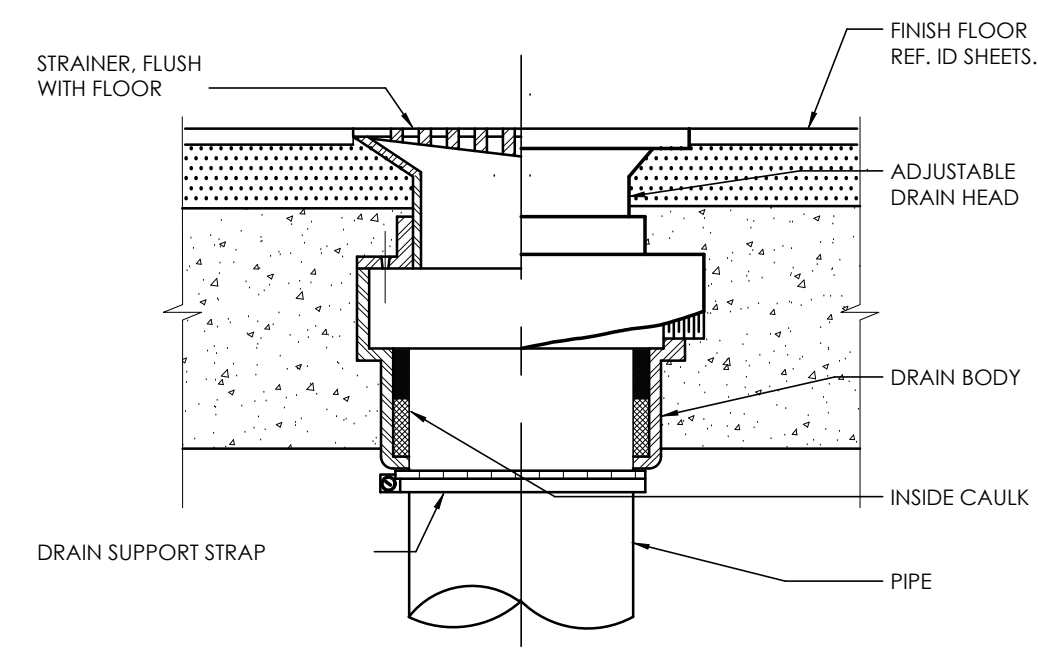
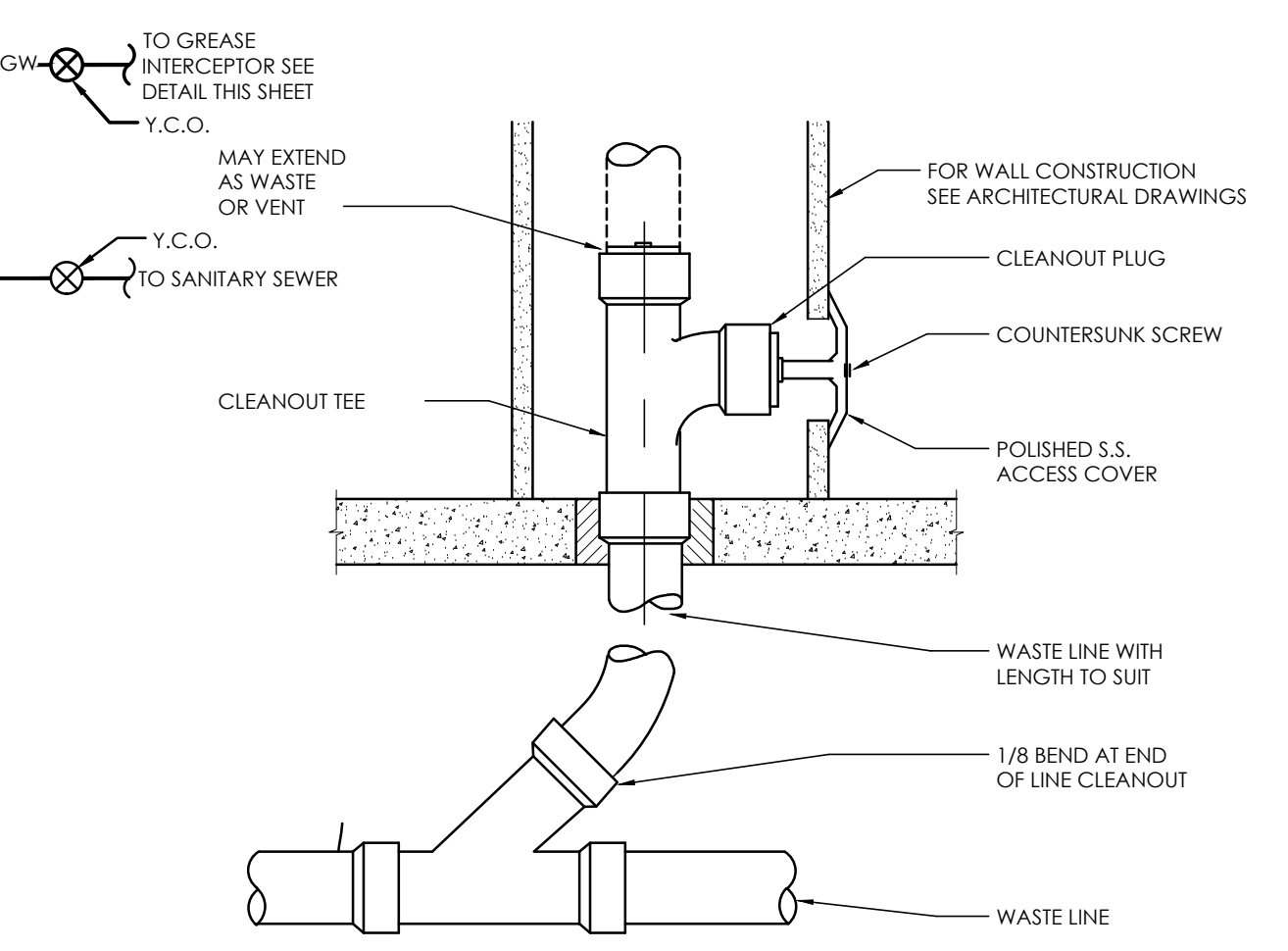
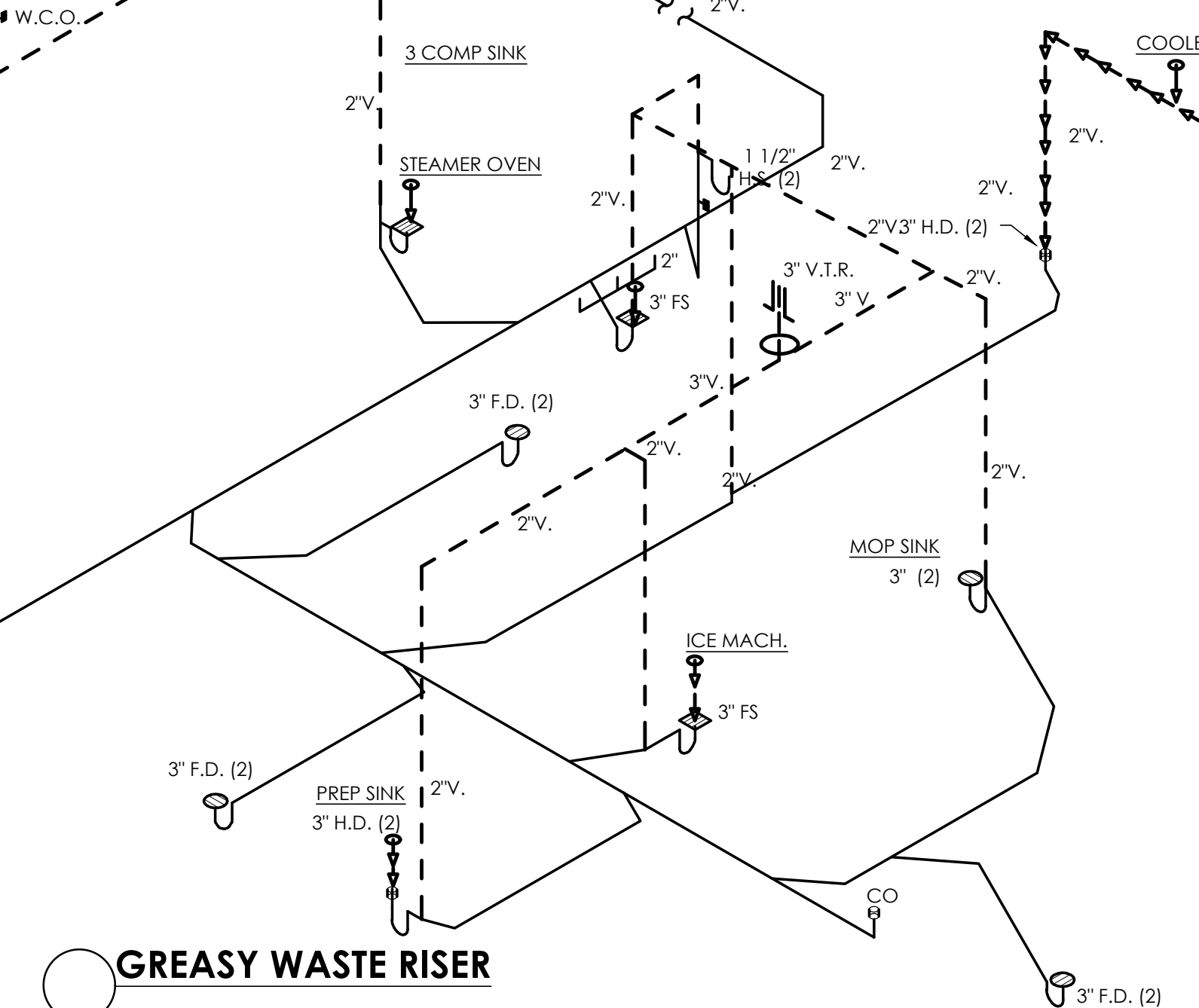
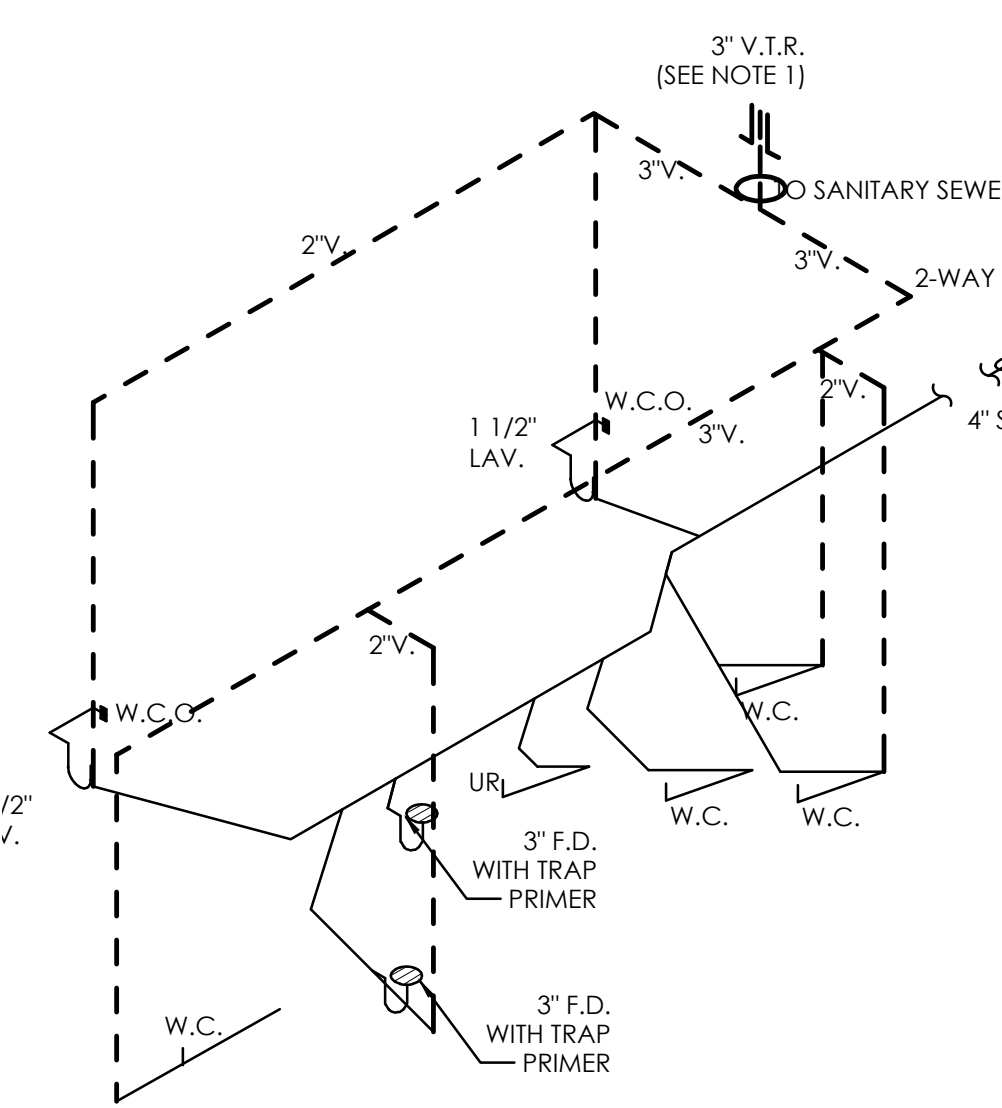
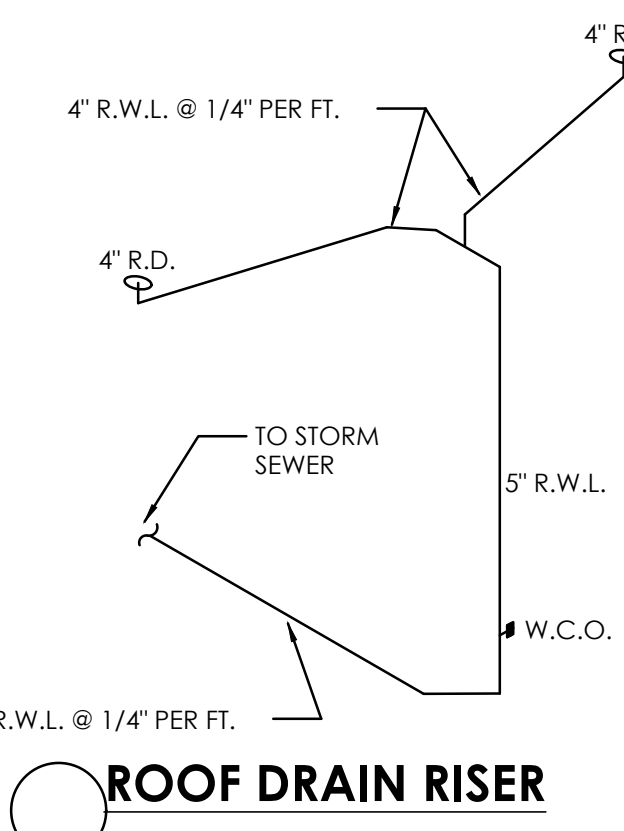
Drawn By: CP
 Checked: SB
 Scale: AS NOTED
 Date: 03.24.21

ALL RIGHTS RESERVED. NO PART OF THESE DRAWINGS OR SPECIFICATIONS MAY BE COPIED, REPRODUCED OR USED IN CONNECTION WITH ANY WORK OTHER THAN THE SPECIFIC PROJECT FOR WHICH THEY HAVE BEEN PREPARED, WITHOUT PRIOR WRITTEN AUTHORIZATION FROM THE ARCHITECT.

SANITARY AND GREASY WASTE PLAN

SCALE: 1/4" = 1'-0"

- ### NOTES:
- PLUMBING CONTR. TO COORDINATE VENT STACKS WITH OUTSIDE AIR INTAKES OF A/C UNITS AND SUPPLY FANS & MAINTAIN AT LEAST 10'-0" MIN. CLEARANCE OR AS PER LOCAL CODE REQUIREMENTS. FLAT VENTS ARE NOT ALLOWED.
 - INCREASE V.T.R.'S TO SIZE REQUIRED BY LOCAL CODES AND CONDITIONS AS REQUIRED FOR FROST ENCLOSURE. FLAT VENTS ARE NOT ALLOWED.
 - RUN SYRUP LINES FROM SODA FACTORY TO DRINK DISPENSERS ABOVE CEILING.
 - CAST IRON PIPE MAY BE USED UNDER SLAB IN LIEU OF PVC ONLY IF REQUIRED BY CODE.
 - PROVIDE CONDENSATE LINES FROM A/C UNITS ABOVE CEILING ACCORDING TO LOCAL CODE REQUIREMENTS.
 - RESEAL FLOOR DRAINS ACCORDING TO LOCAL REQUIREMENTS.
 - SAFEWASTE PIPING ABOVE AND ALONG FLOOR SHALL BE SIZED IN ACCORDANCE WITH LOCAL CODE REQUIREMENTS.
 - COORDINATE SAFEWASTE LINE CONNECTIONS WITH EQUIPMENT ROUGH-IN.
 - F.V.C. (SCHEDULE 40) PIPE CAN BE USED FOR VENTS AND WASTE ONLY IF APPROVED BY LOCAL BUILDING CODES. SEE SPECS. FOR ADDL. INFO.
 - SEE FOUNDATION PLAN FOR EXACT LOCATION OF FLOOR DRAINS AND FLOOR SINKS.
 - IF WALK-IN-BOX CONDENSATE LINE IS REQUIRED BY LOCAL CODE, PLUMBING CONTRACTOR SHALL FURNISH AND INSTALL 1 1/4" CONDENSATE LINE, AND SEAL AROUND ALL PENETRATIONS THROUGH THE WALK-IN-BOX.
 - HEAT TAPE IS PROVIDED BY WALK-IN-BOX MANUFACTURER AND INSTALLED BY ELECTRICAL CONTRACTOR. IT IS TO BE SELF-LIMITING TYPE, "FROSTEX" OR EQUAL.



PROJECT BURGER KING #99300 - PORT RD. GROVE CITY, OH 43123	SHEET TITLE SANITARY AND GREASY WASTE PLAN & RISER
DO NOT SCALE THIS PRINT. USE FIGURED DIMENSIONS ONLY.	
JOB # TG-21657	SHEET P-1