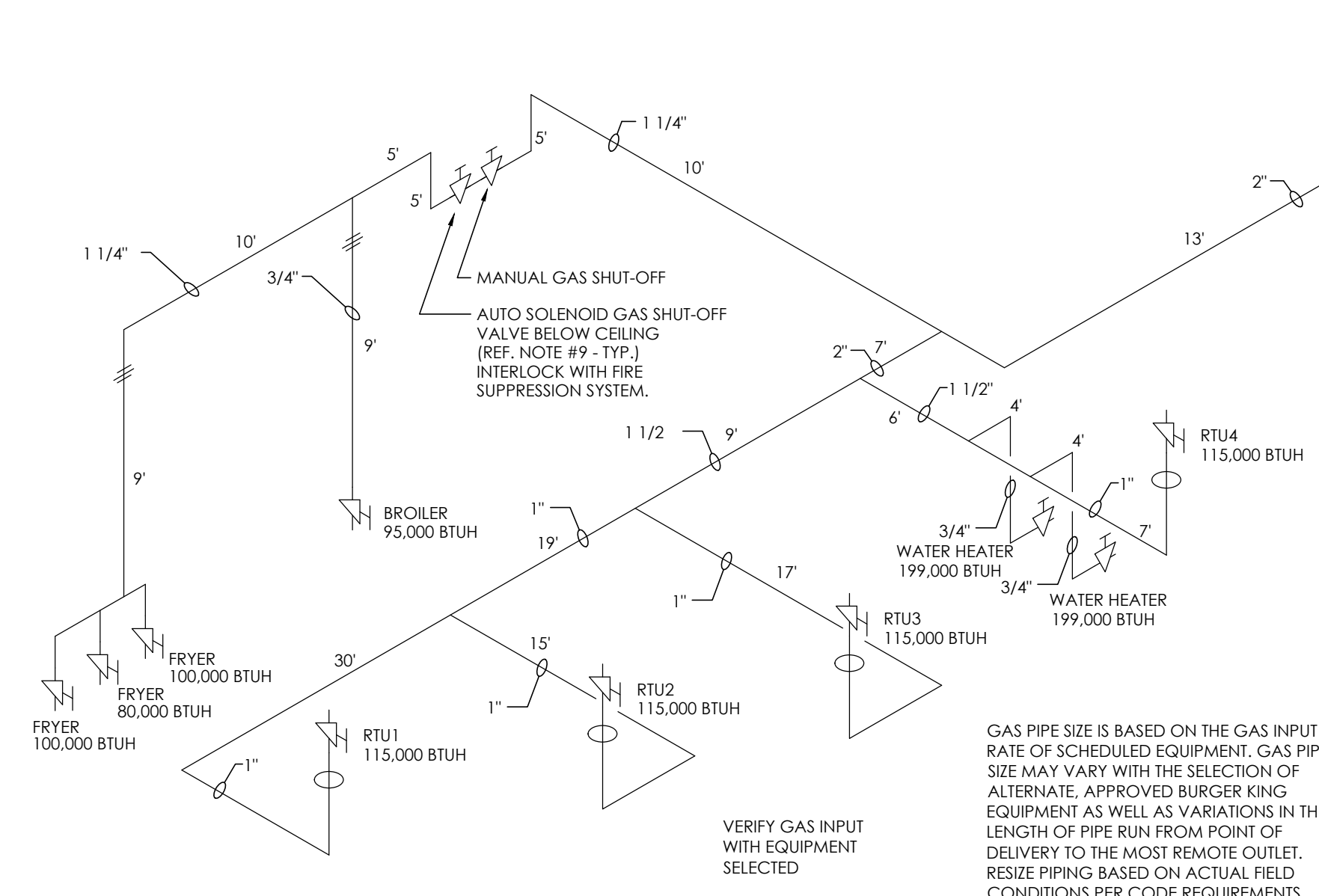
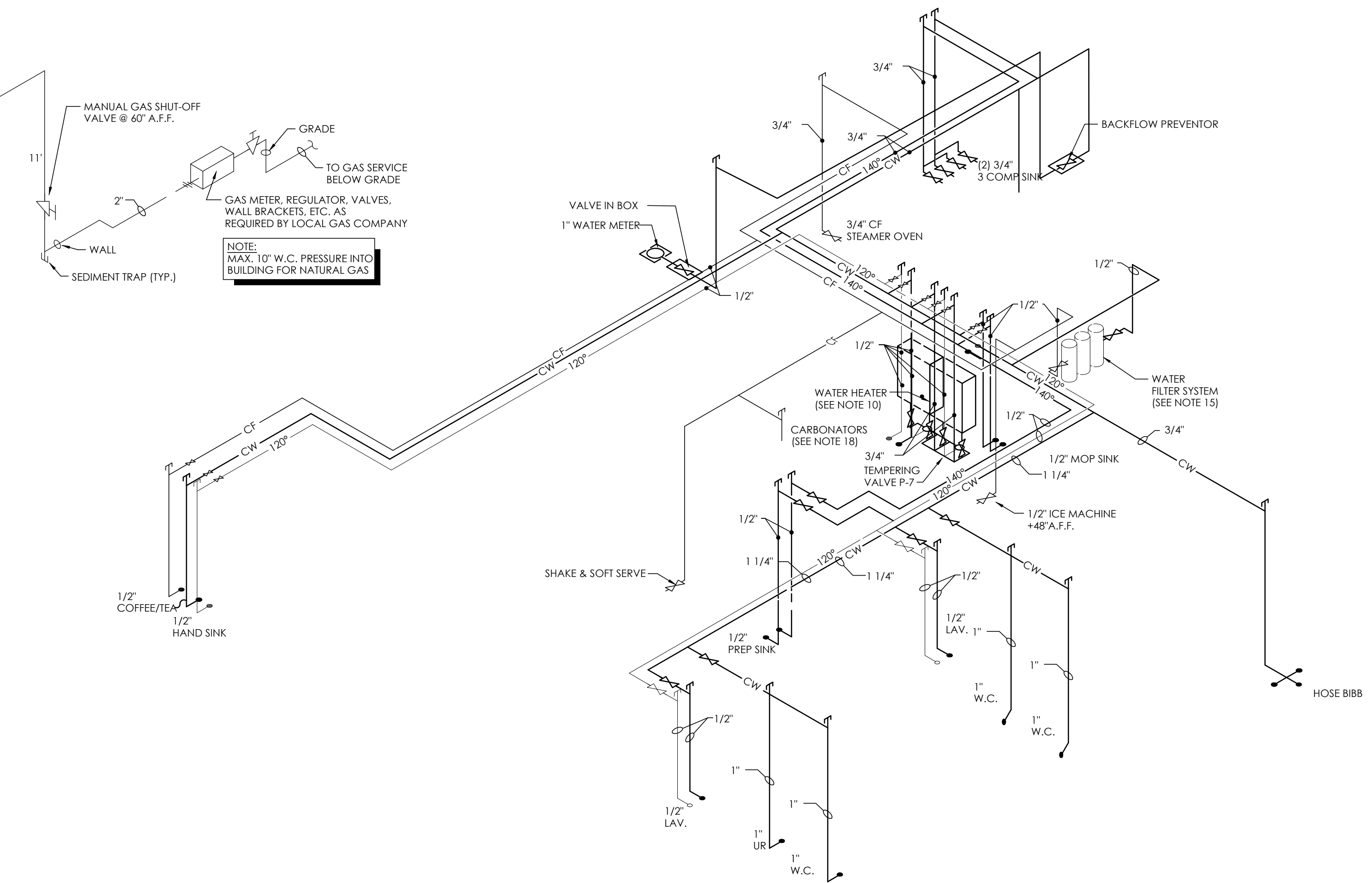


WATER AND GAS PLAN
SCALE: 1/4" = 1'-0"



TOTAL LOAD = 1,169,000 BTUH
TOTAL LENGTH TO FURTHEST APPLIANCE = 90'

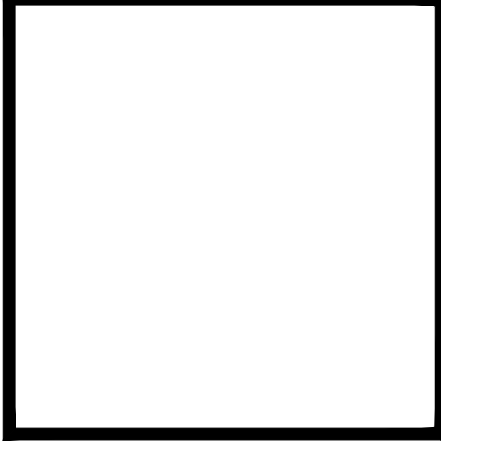
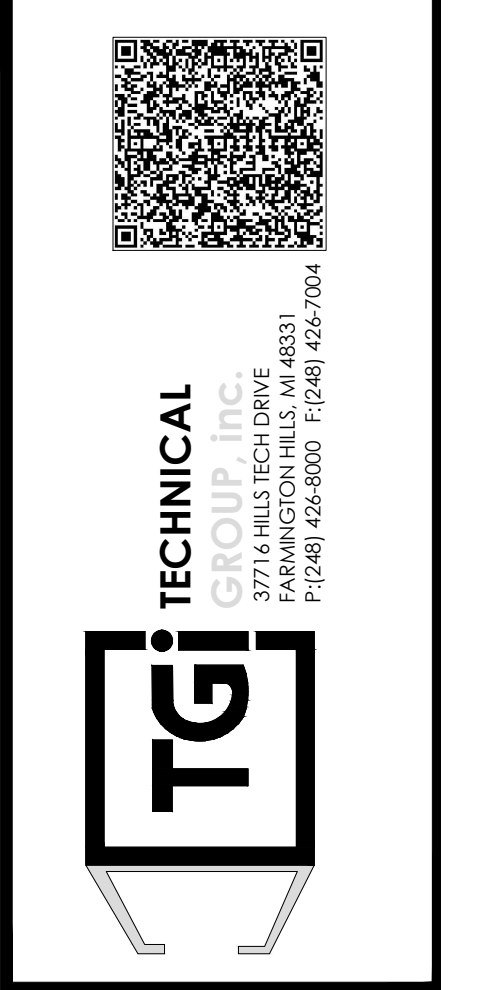
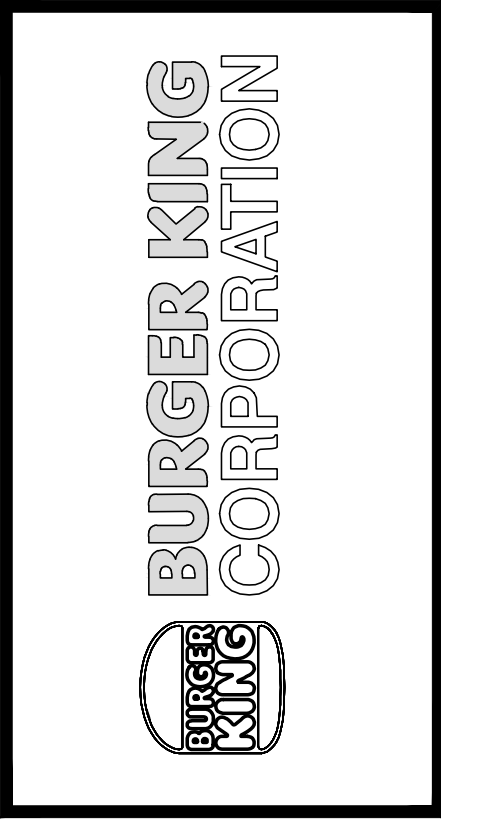


INSULATION SCHEDULE		
ZONE	PIPE SIZE UNDER 1" DIA.	PIPE SIZE OVER 1" DIA.
A&B	4" THICK	3" THICK
C	3" THICK	2" THICK
D&E	3/4" THICK	1" THICK

- NOTES:**
- DO NOT SCALE DRAWINGS
 - GENERAL CONTRACTOR AND PLUMBING CONTRACTOR SHALL VERIFY GAS REQUIREMENTS OF THIS PROJECT BEFORE BIDDING AND PROCEEDING WITH WORK. SEE SHEET M-1 FOR GAS REQUIREMENTS OF A/C UNITS.
 - ALL HOT AND COLD WATER PIPING LOCATED ABOVE CEILING AREAS BUT BELOW ROOF INSULATION SHALL BE INSULATED WITH 3/4" FIBERGLASS LOW PRESSURE TYPE WITH DUAL TEMPERATURE JACKET. ALL HOT AND COLD WATER PIPING LOCATED OUTSIDE OF BUILDING INSULATION ENVELOPE SHALL BE INSULATED TO THICKNESS SPECIFIED IN INSULATION SCHEDULE SHOWN ON THIS SHEET. ALL UNDERGROUND PIPES LOCATED INSIDE BUILDING TO BE ENCASED IN FLEXIBLE POLYETHYLENE.
 - LOCATE COLD WATER PIPES IN FURRED OUT SPACES AT TOILET ROOMS (ZONES A AND B ONLY).
 - PROVIDE FROST PROOF HOSE BIBBS (ZONES A, B, C AND D)
 - PROVIDE SEPARATE SHUT-OFF VALVES FOR ALL EQUIPMENT AND PLUMBING FIXTURES REQUIRING WATER CONNECTIONS.
 - PROVIDE COUPLINGS TO ALL EQUIPMENT AS REQUIRED.
 - PLUMBING CONTRACTOR TO FURNISH AND INSTALL U.L. LISTED MECHANICAL GAS SHUT-OFF VALVES FOR FIRE PROTECTION SYSTEMS. VALVES CAN BE OBTAINED FROM THE FIRE PROTECTION SYSTEM SUPPLIER.
 - PROVIDE CATEGORY III STAINLESS STEEL VENT AS SPECIFIED BY MANUFACTURER. LAST PORTION OF PIPE SHALL EXTEND A MINIMUM OF 36" ABOVE ROOF SURFACE.
 - PROVIDE BACKFLOW PREVENTOR ON COFFEE MAKERS, ICE MACHINE AND OTHER WATER LINES AS REQUIRED BY LOCAL CODES.
 - PROVIDE WOOD BLOCKING AS REQUIRED FOR FIXTURES AND PIPING. (REFERENCE SHEET A-1)
 - CONTRACTOR TO PROVIDE 3/4" DIAMETER HOT AND COLD WATER LINES AT TRASH ENCLOSURE WITH MIXING VALVE AT CAN WASH INSIDE OF BUILDING.
 - INSTANTANEOUS GAS WATER HEATER AS SPECIFIED ON SHEET P-1 IS NOT RECOMMENDED FOR USE IN EXTREMELY COLD CLIMATES (ZONE A) DUE TO ITS INABILITY TO PRODUCE LARGE QUANTITIES OF HOT WATER OR MAINTAIN WATER TEMPERATURES IN EXCESS OF 130°F.
 - FILTERED WATER AT THE VEGETABLE PREP SINK IS OPTIONAL. UNFILTERED COLD WATER MAY BE USED IN ITS PLACE.
 - APPROVED WATER FILTER SYSTEMS:
 - EVERPURE MODEL #C820312 OR SELECTO SCIENTIFIC MODE #MF620CC. NOTE: PROVIDE LINE INHIBITOR AS MAY BE REQUIRED.
 - PLUMBING CONTRACTOR TO PROVIDE AND INSTALL WATER FILTER FOR FOUNTAIN DRINKS AT THE BAG-IN-BOX WALL. VERIFY FILTER REQUIREMENTS WITH COKE VENDOR.
 - CUTTING AND NOTCHING OF 2x4 BEARING WALL NOT TO EXCEED 7/8". BORED HOLES IN 2x4 BEARING WALLS NOT TO EXCEED 2-1/8".
 - PE PIPING TO BE USED UNLESS NOT ALLOWED BY LOCAL CODES.
 - PLUMBING CONTRACTOR TO PROVIDE WATER FILTER FOR DRINK SYSTEM. COORDINATE REQUIREMENTS WITH THE EQUIPMENT SUPPLIER.
 - INSTALL MIXING VALVES AT ALL FIXTURES SHOWN ON LAYOUT.

No.	Date	By	Notes
3	5/26/21	DB	PLANNING SUBMITTAL
4	7/27/21	DB	BUILDING SUBMITTAL
5	8/27/21	AS	BUILDING REVISIONS
6	10/29/21	AS	ENGINEERING REVISIONS
7	12/10/21	AS	BUILDING REVISIONS 2

Drawn By: CP
Checked: SB
Scale: AS NOTED
Date: 03.24.21



PROJECT BURGER KING #99300 10000 PORT RD. GRAVE CITY, OH 43024	SHEET TITLE WATER & GAS PLAN AND RISERS
DO NOT SCALE THIS PRINT. USE FIGURED DIMENSIONS ONLY.	
JOB # TG-21657	
SHEET P-2	