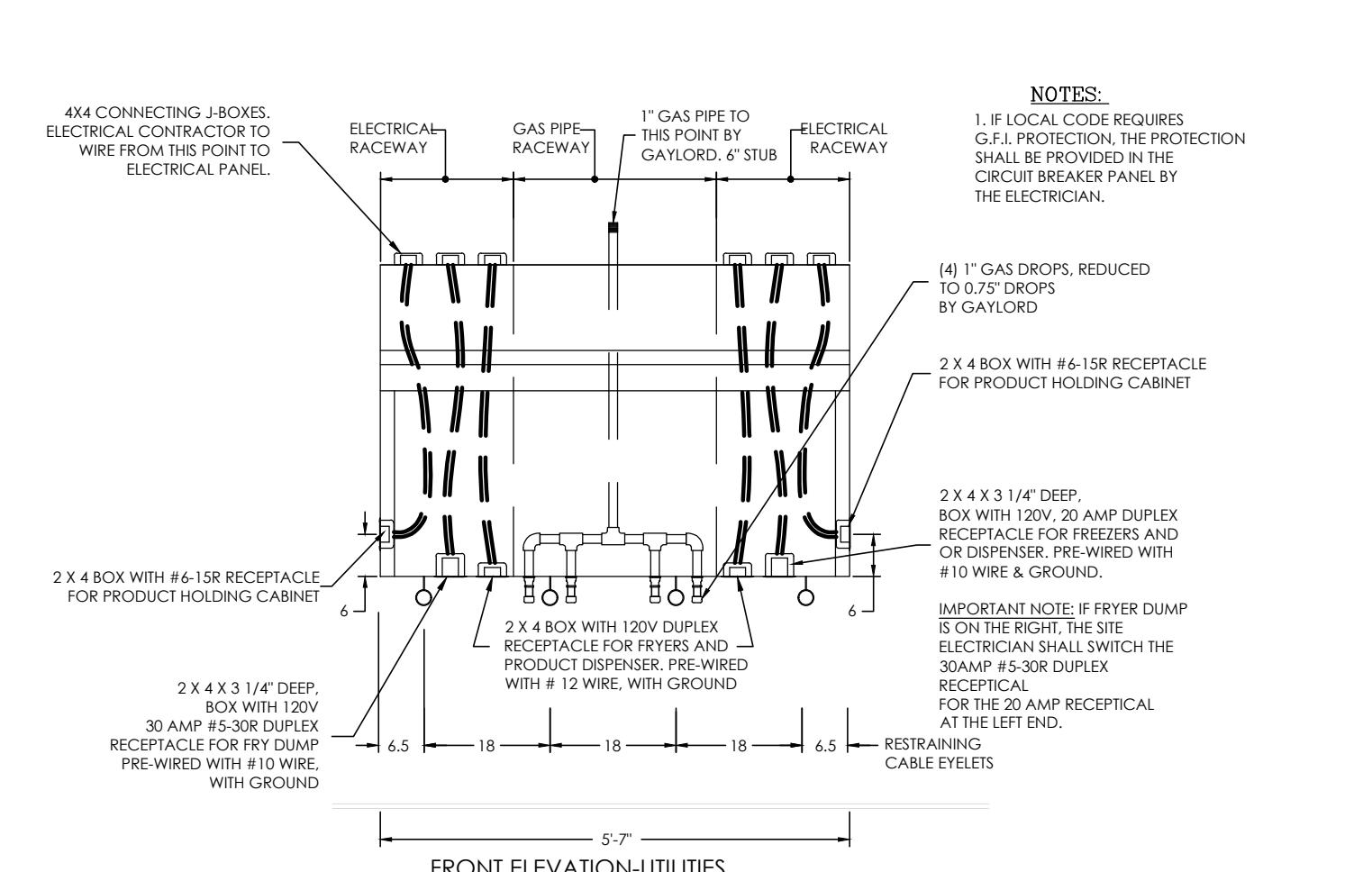
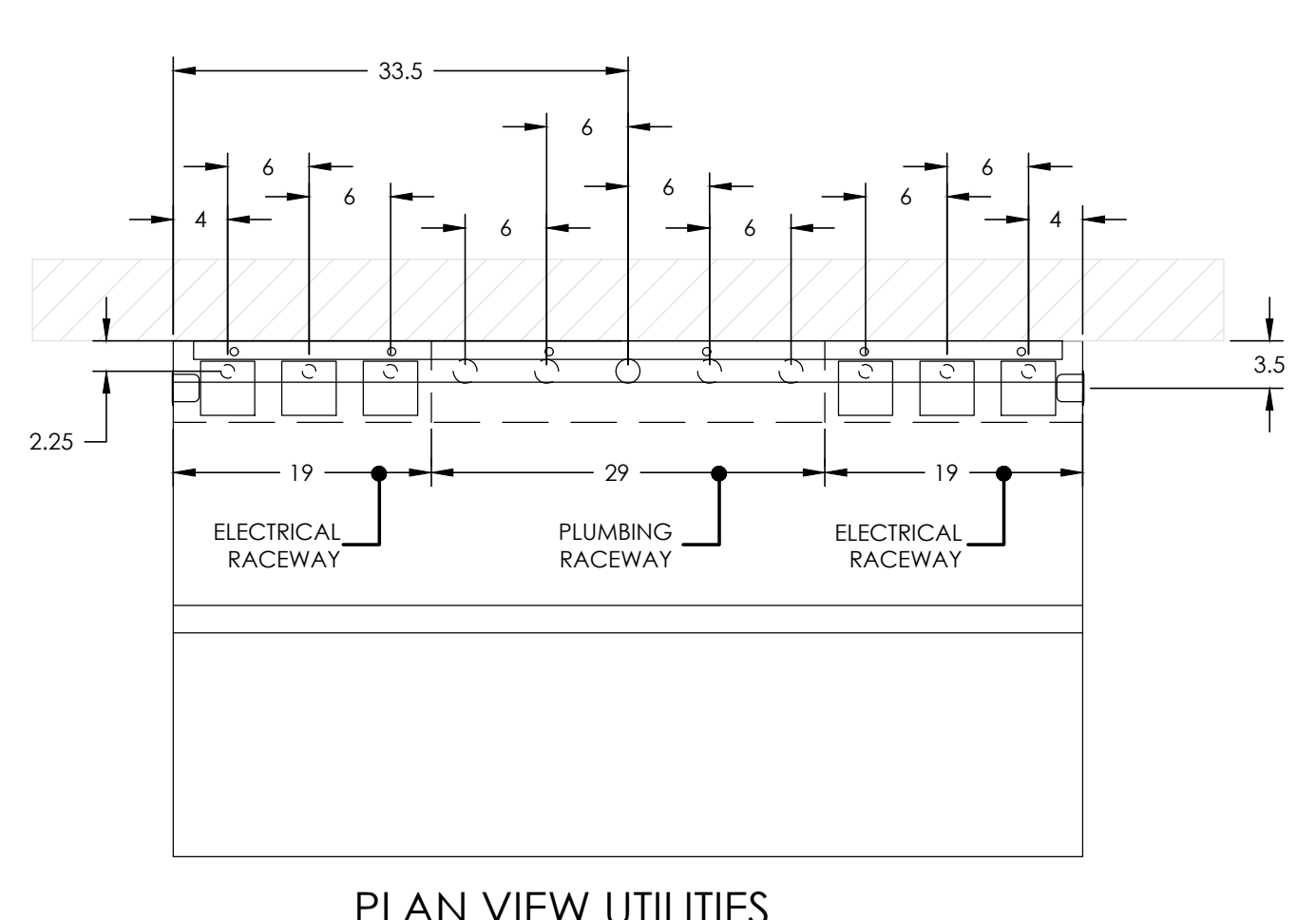


PLAN VIEW



FRONT ELEVATION-UTILITIES

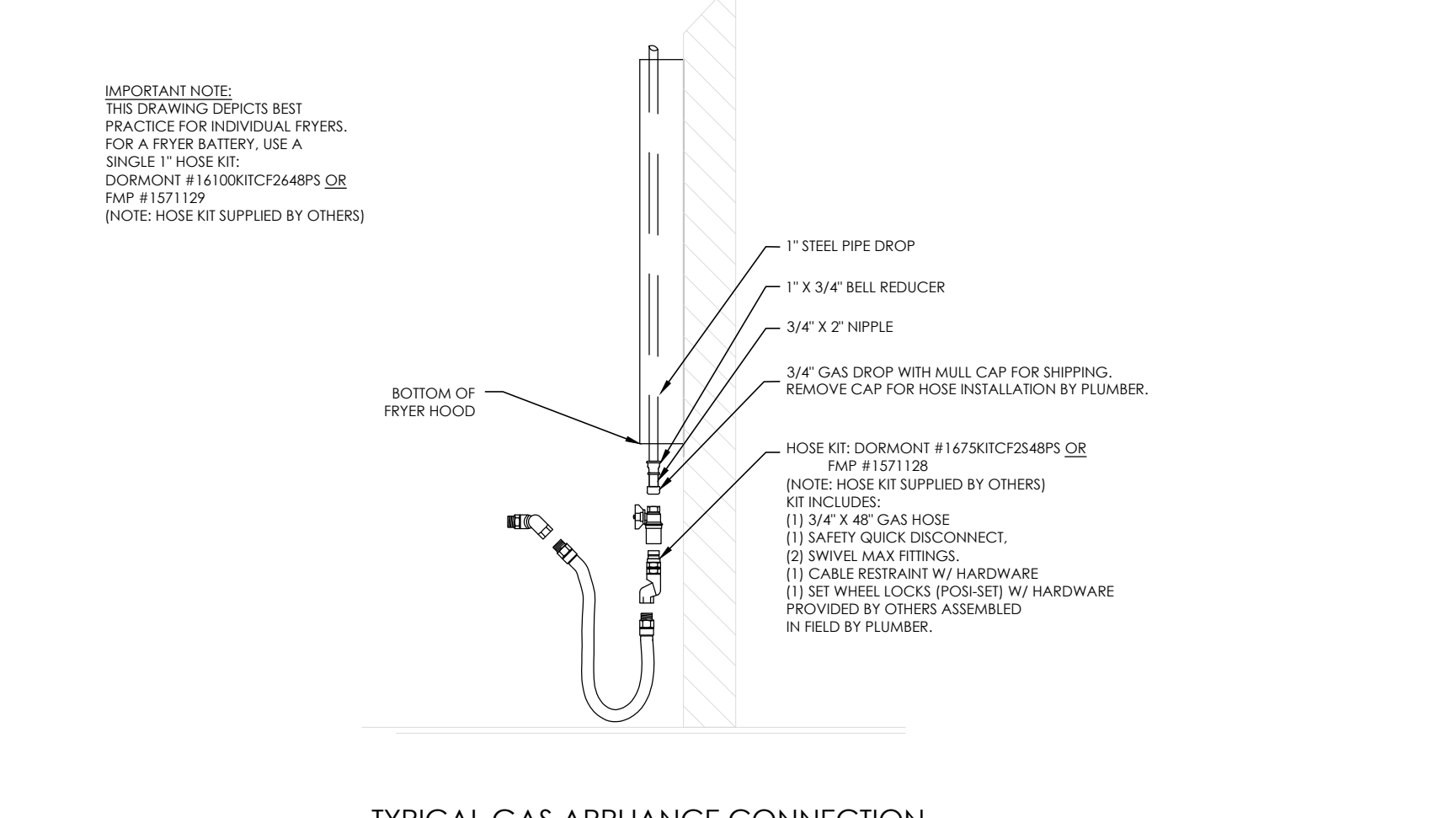


PLAN VIEW UTILITIES

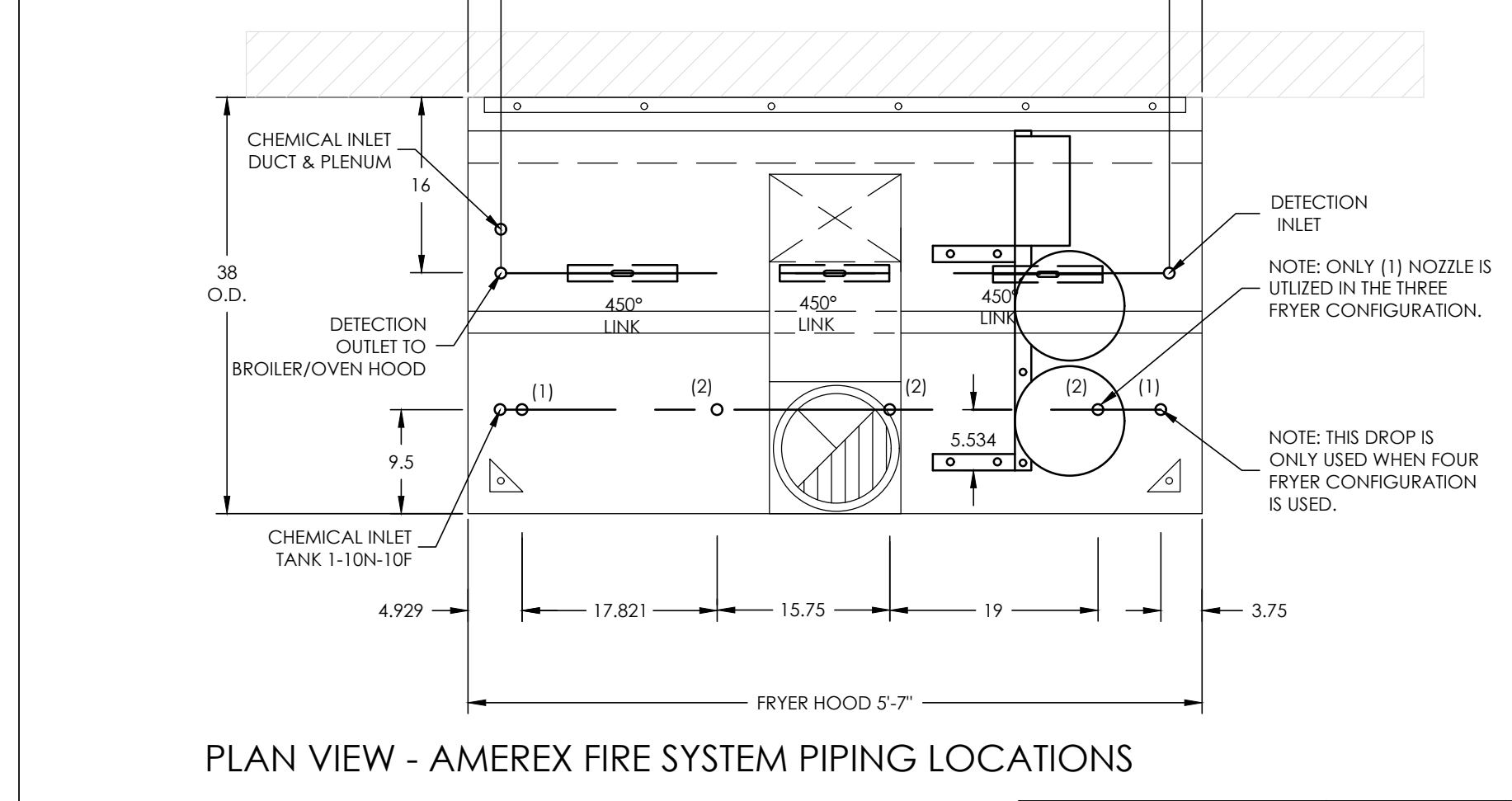
NO.	DATE	DESCRIPTION	BY	CHKD BY	WORK ORDER #	
07	JFA 04/11/13	No Change	JFA	JFA	11-08-10	
06	JFA 11/21/11	MOVE C-1284 REV 01 TO C-1284 REV 6 BK APPROVED #	JFA	JFA	C-1284	
REV	DOWN BY	DATE	DESCRIPTION	BY	CHKD BY	WORK ORDER #
07	JFA	04/11/13	No Change	JFA	JFA	11-08-10
06	JFA	11/21/11	MOVE C-1284 REV 01 TO C-1284 REV 6 BK APPROVED #	JFA	JFA	C-1284

NO.	DATE	DESCRIPTION	BY	CHKD BY	WORK ORDER #	
07	JFA 04/11/13	No Change	JFA	JFA	11-08-10	
06	JFA 11/21/11	MOVE C-1284 REV 01 TO C-1284 REV 6 BK APPROVED #	JFA	JFA	C-1284	
REV	DOWN BY	DATE	DESCRIPTION <td>BY</td> <td>CHKD BY</td> <td>WORK ORDER #</td>	BY	CHKD BY	WORK ORDER #
07	JFA	04/11/13	No Change	JFA	JFA	11-08-10
06	JFA	11/21/11	MOVE C-1284 REV 01 TO C-1284 REV 6 BK APPROVED #	JFA	JFA	C-1284

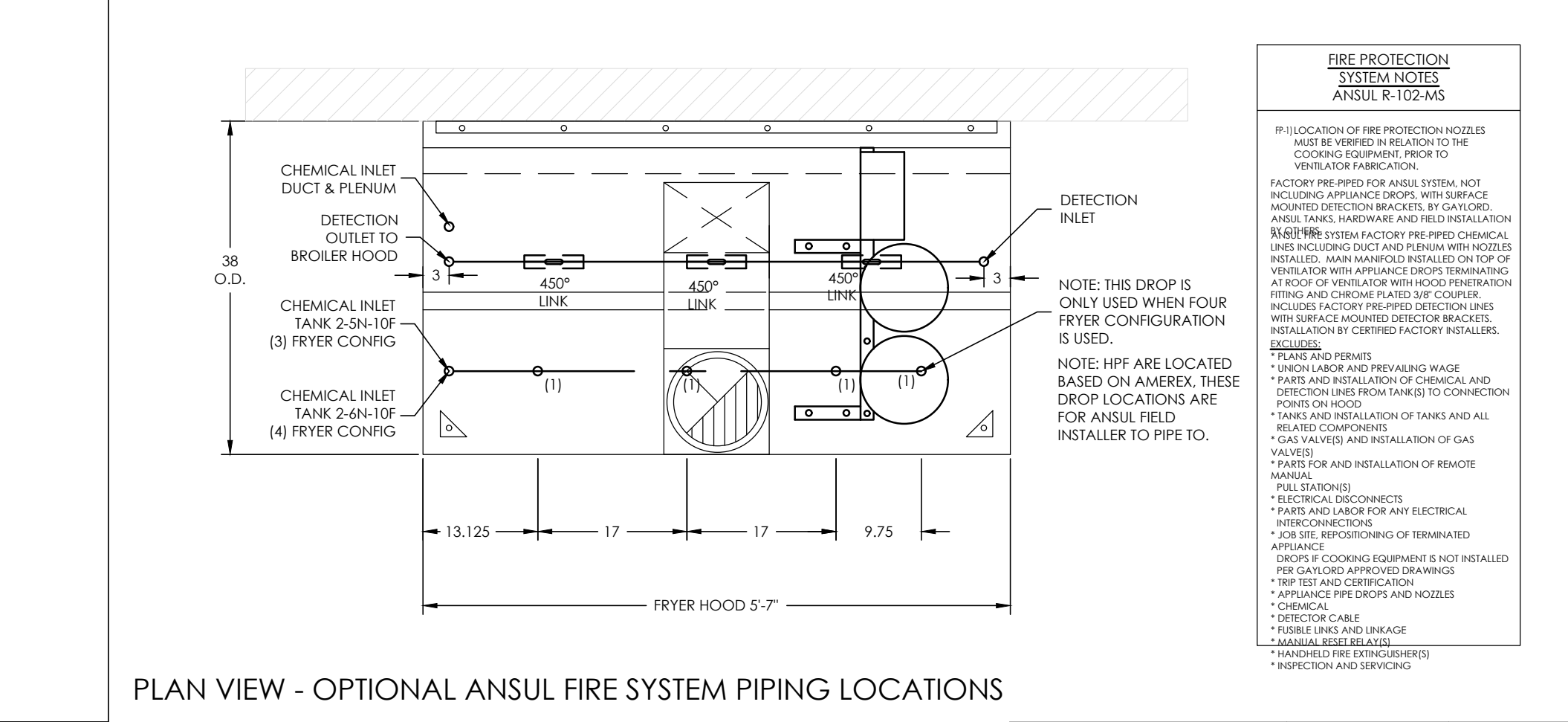
NO.	DATE	DESCRIPTION	BY	CHKD BY	WORK ORDER #	
07	JFA 04/11/13	No Change	JFA	JFA	11-08-10	
06	JFA 11/21/11	MOVE C-1284 REV 01 TO C-1284 REV 6 BK APPROVED #	JFA	JFA	C-1284	
REV	DOWN BY	DATE	DESCRIPTION <td>BY</td> <td>CHKD BY</td> <td>WORK ORDER #</td>	BY	CHKD BY	WORK ORDER #
07	JFA	04/11/13	No Change	JFA	JFA	11-08-10
06	JFA	11/21/11	MOVE C-1284 REV 01 TO C-1284 REV 6 BK APPROVED #	JFA	JFA	C-1284



TYPICAL GAS APPLIANCE CONNECTION



PLAN VIEW - AMEREX FIRE SYSTEM PIPING LOCATIONS



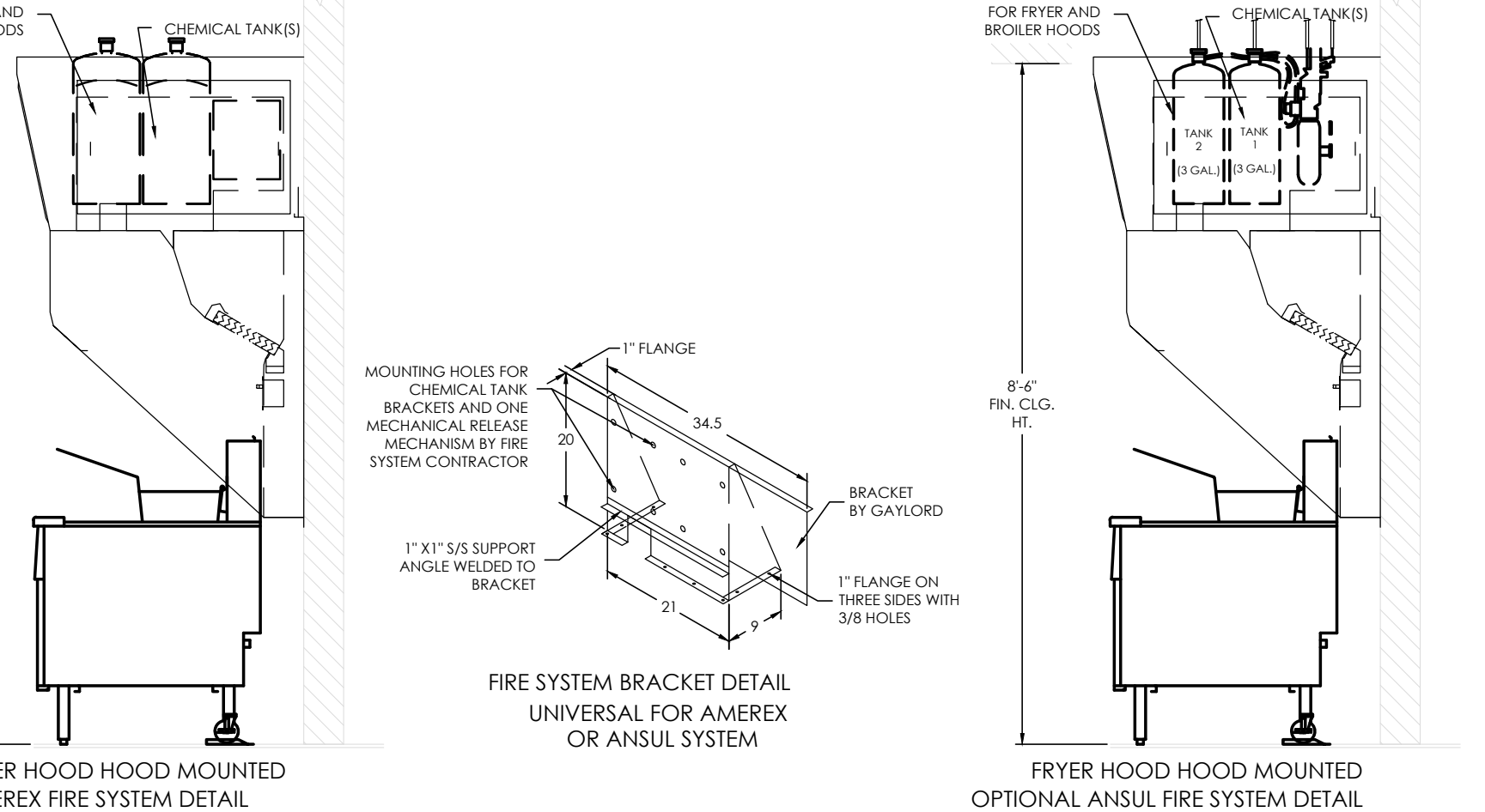
PLAN VIEW - OPTIONAL ANSUL FIRE SYSTEM PIPING LOCATIONS

FIRE PROTECTION SYSTEM NOTES ANSUL R-102-MS
 1. LOCATION OF FIRE PROTECTION HOODS MUST BE VERIFIED IN RELATION TO THE COOKING EQUIPMENT. REFER TO VENTILATION FABRICATION.
 2. FACTORY PRE-WIRED ANSUL SYSTEM NOT INCLUDING APPLIANCE DROPS, WITH SURFACE MOUNTED DETECTOR BRACKETS BY GAYLORD.
 3. ANSUL TANKS, SHOWN AND FIELD INSTALLATION. REFER TO SYSTEM FACTORY PRE-WIRED CHEMICAL LINES INCLUDING DUCT AND PLENUM WITH HOODS. MAIN MANIFOLD IS LOCATED ON TOP OF VENTILATION WITH APPLIANCE DROPS BEHIND BRACKETS. REFER TO DETECTOR BRACKETS. REFER TO DETECTOR BRACKETS. REFER TO DETECTOR BRACKETS.
 4. REFER TO DETECTOR BRACKETS. REFER TO DETECTOR BRACKETS. REFER TO DETECTOR BRACKETS.
 5. REFER TO DETECTOR BRACKETS. REFER TO DETECTOR BRACKETS. REFER TO DETECTOR BRACKETS.
 6. REFER TO DETECTOR BRACKETS. REFER TO DETECTOR BRACKETS. REFER TO DETECTOR BRACKETS.
 7. REFER TO DETECTOR BRACKETS. REFER TO DETECTOR BRACKETS. REFER TO DETECTOR BRACKETS.
 8. REFER TO DETECTOR BRACKETS. REFER TO DETECTOR BRACKETS. REFER TO DETECTOR BRACKETS.
 9. REFER TO DETECTOR BRACKETS. REFER TO DETECTOR BRACKETS. REFER TO DETECTOR BRACKETS.
 10. REFER TO DETECTOR BRACKETS. REFER TO DETECTOR BRACKETS. REFER TO DETECTOR BRACKETS.
 11. REFER TO DETECTOR BRACKETS. REFER TO DETECTOR BRACKETS. REFER TO DETECTOR BRACKETS.
 12. REFER TO DETECTOR BRACKETS. REFER TO DETECTOR BRACKETS. REFER TO DETECTOR BRACKETS.
 13. REFER TO DETECTOR BRACKETS. REFER TO DETECTOR BRACKETS. REFER TO DETECTOR BRACKETS.
 14. REFER TO DETECTOR BRACKETS. REFER TO DETECTOR BRACKETS. REFER TO DETECTOR BRACKETS.
 15. REFER TO DETECTOR BRACKETS. REFER TO DETECTOR BRACKETS. REFER TO DETECTOR BRACKETS.
 16. REFER TO DETECTOR BRACKETS. REFER TO DETECTOR BRACKETS. REFER TO DETECTOR BRACKETS.
 17. REFER TO DETECTOR BRACKETS. REFER TO DETECTOR BRACKETS. REFER TO DETECTOR BRACKETS.
 18. REFER TO DETECTOR BRACKETS. REFER TO DETECTOR BRACKETS. REFER TO DETECTOR BRACKETS.
 19. REFER TO DETECTOR BRACKETS. REFER TO DETECTOR BRACKETS. REFER TO DETECTOR BRACKETS.
 20. REFER TO DETECTOR BRACKETS. REFER TO DETECTOR BRACKETS. REFER TO DETECTOR BRACKETS.

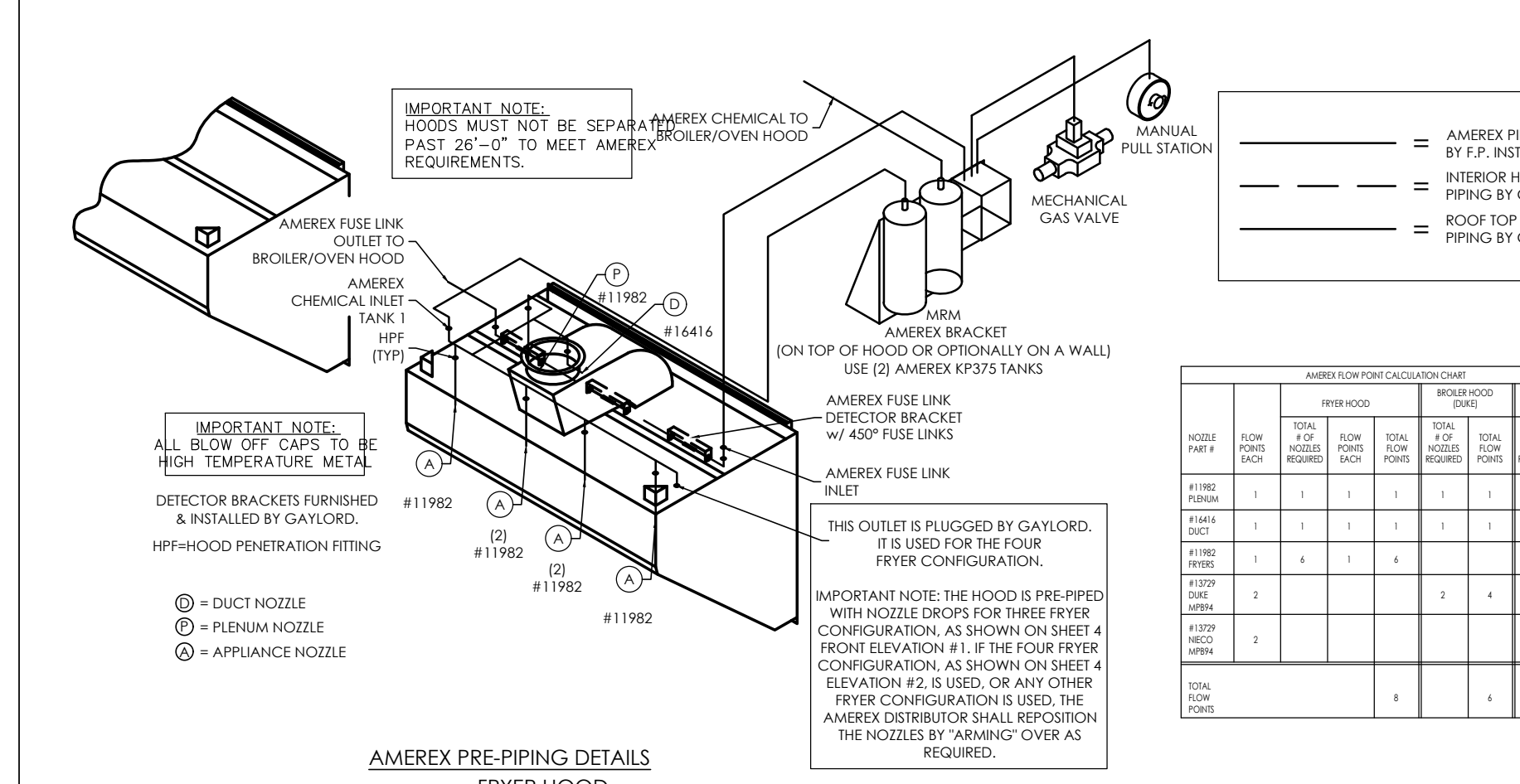
NO.	DATE	DESCRIPTION	BY	CHKD BY	WORK ORDER #	
07	JFA 04/11/13	No Change	JFA	JFA	11-08-10	
06	JFA 11/21/11	MOVE C-1284 REV 01 TO C-1284 REV 6 BK APPROVED #	JFA	JFA	C-1284	
REV	DOWN BY	DATE	DESCRIPTION <td>BY</td> <td>CHKD BY</td> <td>WORK ORDER #</td>	BY	CHKD BY	WORK ORDER #
07	JFA	04/11/13	No Change	JFA	JFA	11-08-10
06	JFA	11/21/11	MOVE C-1284 REV 01 TO C-1284 REV 6 BK APPROVED #	JFA	JFA	C-1284

NO.	DATE	DESCRIPTION	BY	CHKD BY	WORK ORDER #	
07	JFA 04/11/13	Change to 3 detector brackets	JFA	JFA	11-08-10	
06	JFA 11/21/11	MOVE C-1284 REV 01 TO C-1284 REV 6 BK APPROVED #	JFA	JFA	C-1284	
REV	DOWN BY	DATE	DESCRIPTION <td>BY</td> <td>CHKD BY</td> <td>WORK ORDER #</td>	BY	CHKD BY	WORK ORDER #
07	JFA	04/11/13	Change to 3 detector brackets	JFA	JFA	11-08-10
06	JFA	11/21/11	MOVE C-1284 REV 01 TO C-1284 REV 6 BK APPROVED #	JFA	JFA	C-1284

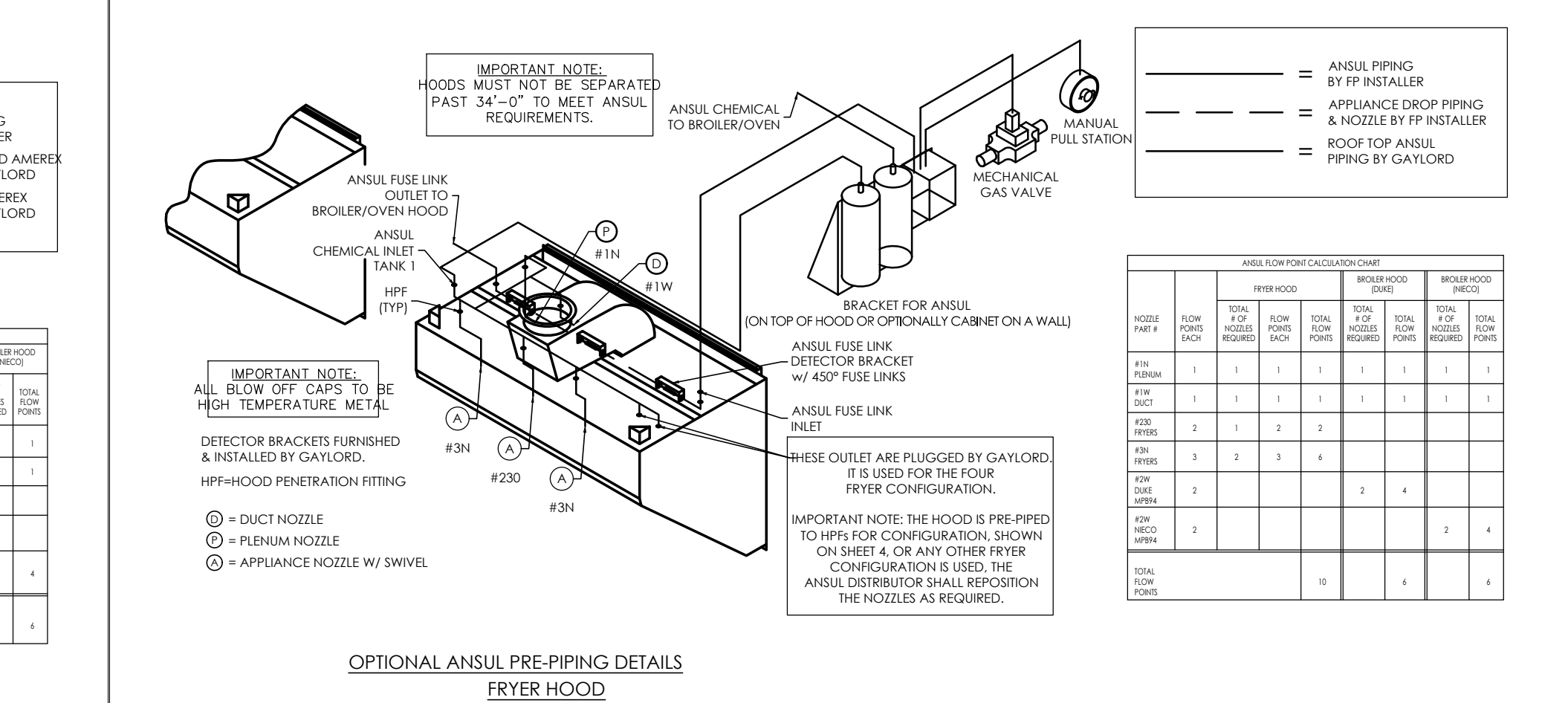
NO.	DATE	DESCRIPTION	BY	CHKD BY	WORK ORDER #	
07	JFA 04/11/13	Add note for field install of drops	JFA	JFA	11-08-10	
06	JFA 11/21/11	MOVE C-1284 REV 01 TO C-1284 REV 6 BK APPROVED #	JFA	JFA	C-1284	
REV	DOWN BY	DATE	DESCRIPTION <td>BY</td> <td>CHKD BY</td> <td>WORK ORDER #</td>	BY	CHKD BY	WORK ORDER #
07	JFA	04/11/13	Add note for field install of drops	JFA	JFA	11-08-10
06	JFA	11/21/11	MOVE C-1284 REV 01 TO C-1284 REV 6 BK APPROVED #	JFA	JFA	C-1284



FRYER HOOD HOOD MOUNTED AMEREX FIRE SYSTEM DETAIL



AMEREX PRE-PIPING DETAILS FRYER HOOD



OPTIONAL ANSUL PRE-PIPING DETAILS FRYER HOOD

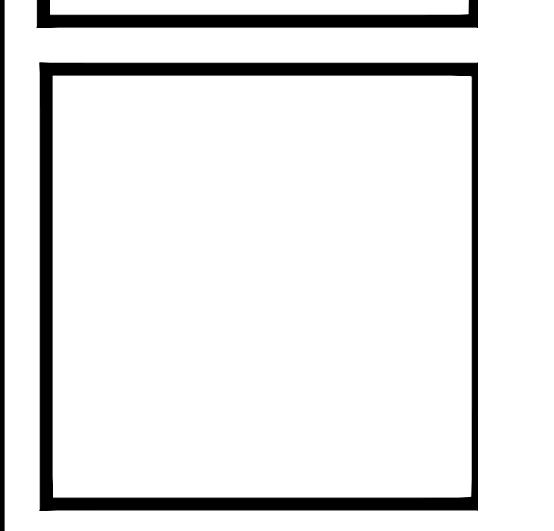
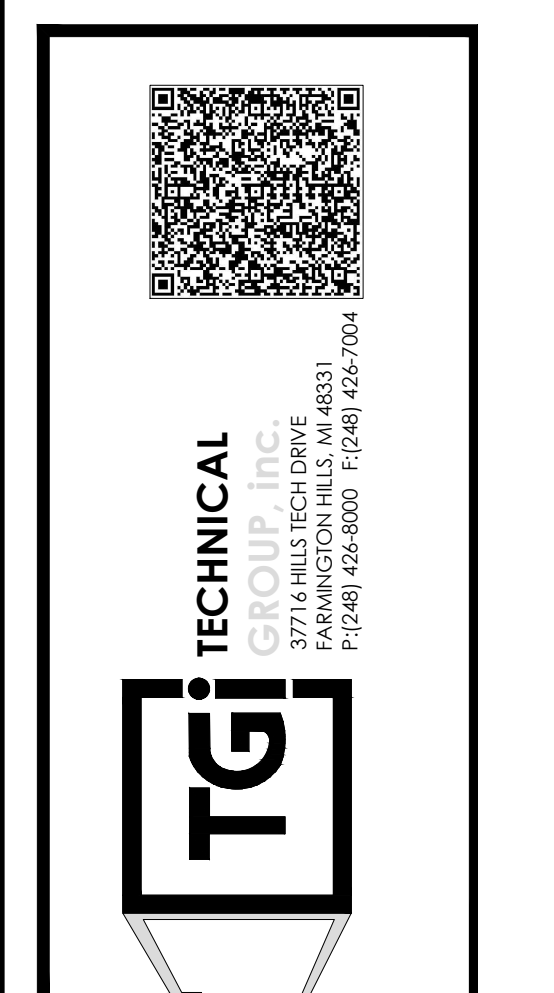
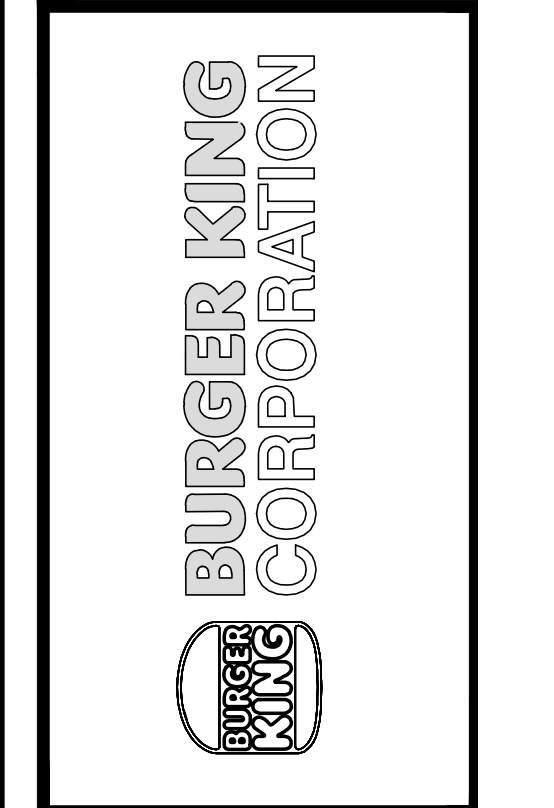
NO.	DATE	DESCRIPTION	BY	CHKD BY	WORK ORDER #	
07	JFA 4/11/13	No Change	JFA	JFA	11-08-10	
06	JFA 11/21/11	MOVE C-1284 REV 01 TO C-1284 REV 6 BK APPROVED #	JFA	JFA	C-1284	
REV	DOWN BY	DATE	DESCRIPTION <td>BY</td> <td>CHKD BY</td> <td>WORK ORDER #</td>	BY	CHKD BY	WORK ORDER #
07	JFA	4/11/13	No Change	JFA	JFA	11-08-10
06	JFA	11/21/11	MOVE C-1284 REV 01 TO C-1284 REV 6 BK APPROVED #	JFA	JFA	C-1284

NO.	DATE	DESCRIPTION	BY	CHKD BY	WORK ORDER #	
07	JFA 4/11/13	Change to 3 detector brackets	JFA	JFA	11-08-10	
06	JFA 11/21/11	MOVE C-1284 REV 01 TO C-1284 REV 6 BK APPROVED #	JFA	JFA	C-1284	
REV	DOWN BY	DATE	DESCRIPTION <td>BY</td> <td>CHKD BY</td> <td>WORK ORDER #</td>	BY	CHKD BY	WORK ORDER #
07	JFA	4/11/13	Change to 3 detector brackets	JFA	JFA	11-08-10
06	JFA	11/21/11	MOVE C-1284 REV 01 TO C-1284 REV 6 BK APPROVED #	JFA	JFA	C-1284

NO.	DATE	DESCRIPTION	BY	CHKD BY	WORK ORDER #	
07	JFA 4/11/13	Change notes on appliance drops	JFA	JFA	11-08-10	
06	JFA 11/21/11	MOVE C-1284 REV 01 TO C-1284 REV 6 BK APPROVED #	JFA	JFA	C-1284	
REV	DOWN BY	DATE	DESCRIPTION <td>BY</td> <td>CHKD BY</td> <td>WORK ORDER #</td>	BY	CHKD BY	WORK ORDER #
07	JFA	4/11/13	Change notes on appliance drops	JFA	JFA	11-08-10
06	JFA	11/21/11	MOVE C-1284 REV 01 TO C-1284 REV 6 BK APPROVED #	JFA	JFA	C-1284

No.	Date	By	Notes
3	5/26/21	DB	PLANNING SUBMITTAL
4	7/27/21	DB	BUILDING SUBMITTAL
5	8/27/21	AS	BUILDING REVISIONS
6	10/29/21	AS	ENGINEERING REVISIONS
7	12/10/21	AS	BUILDING REVISIONS 2

Drawn By: CP
 Checked: SB
 Scale: AS NOTED
 Date: 03/24/21



PROJECT: BURGER KING #29300 - PORT RD. GAYLORD, OH 43024
 SHEET TITLE: FRYER HOOD DRAWINGS
 DO NOT SCALE THIS PRINT. USE FIGURED DIMENSIONS ONLY.
 JOB #: TG-21657
 SHEET: M-8

SHEET: M-8