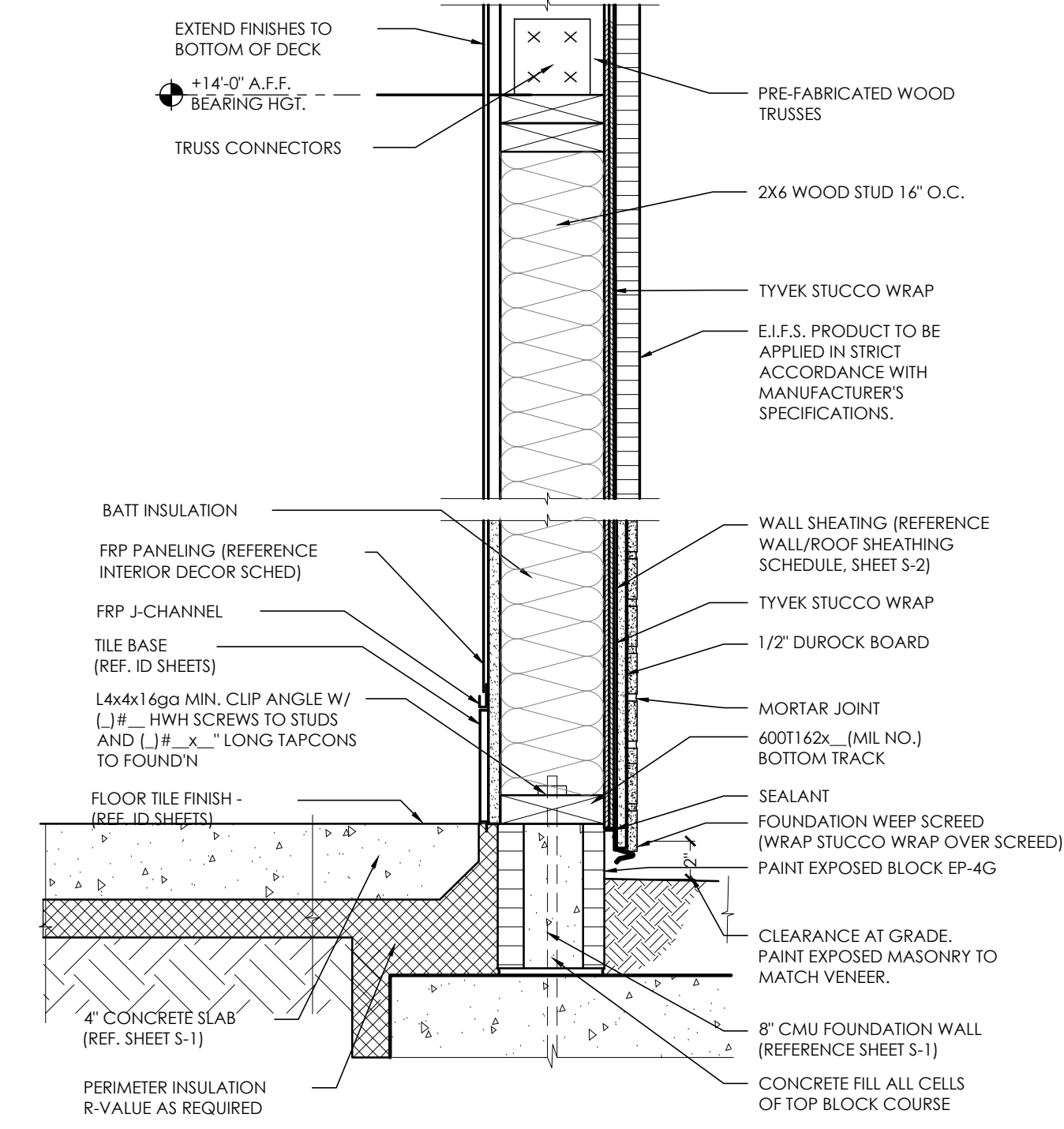
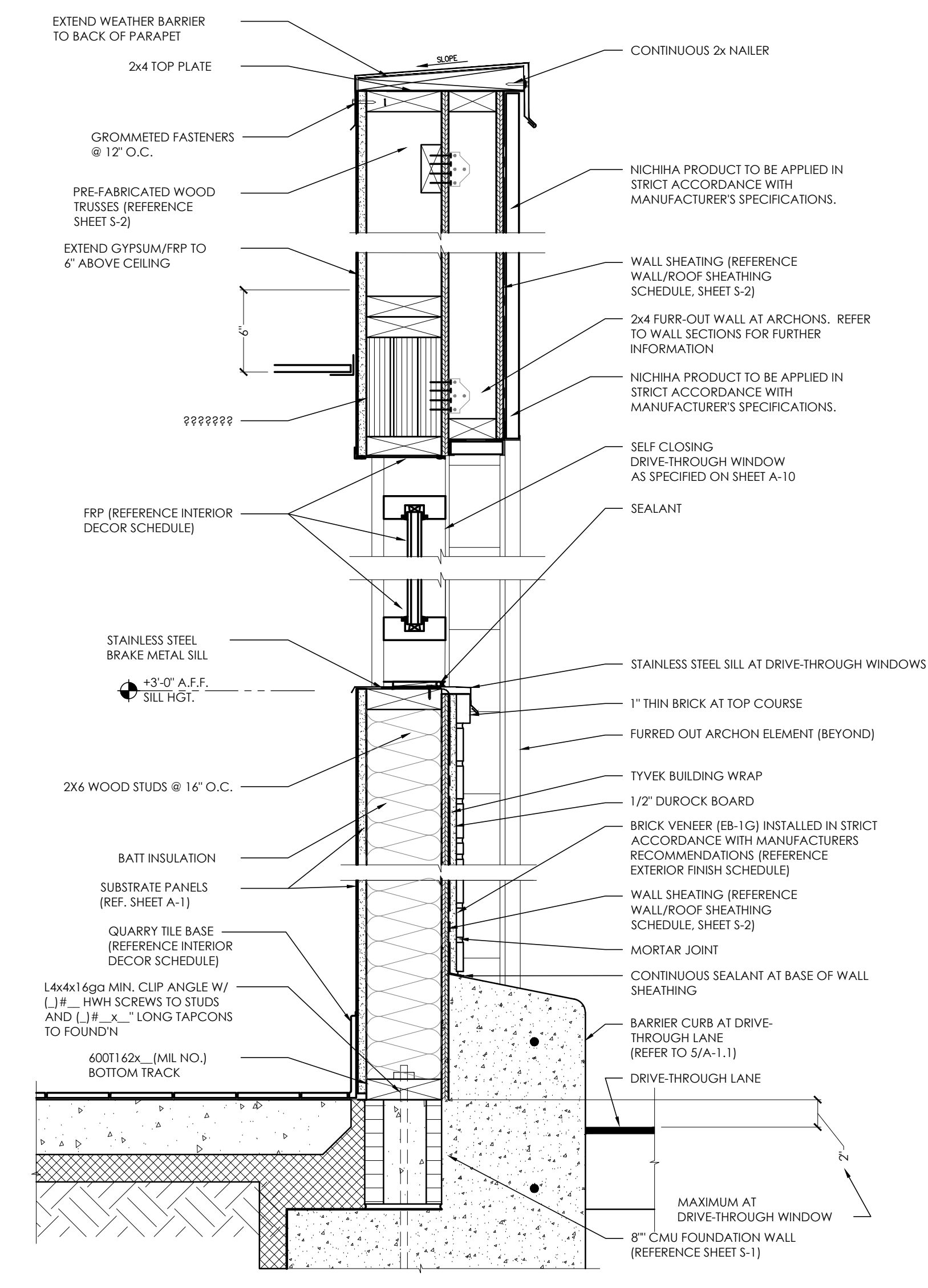


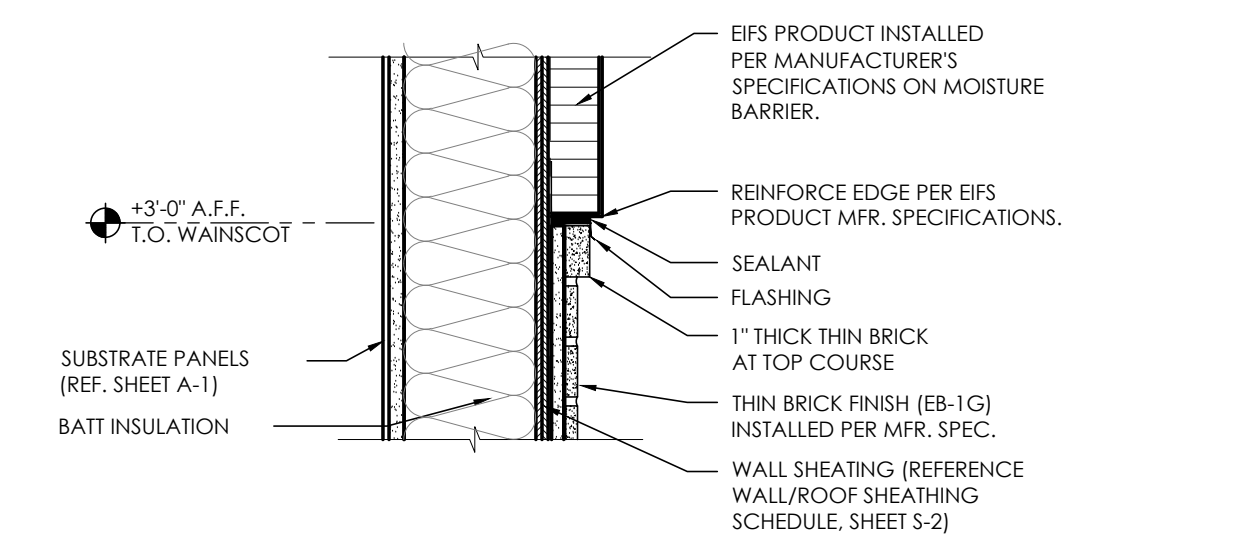
**A** BASE-SILL-HEADER-CAP DETAILS  
SCALE: 1 1/2" - 1'-0"



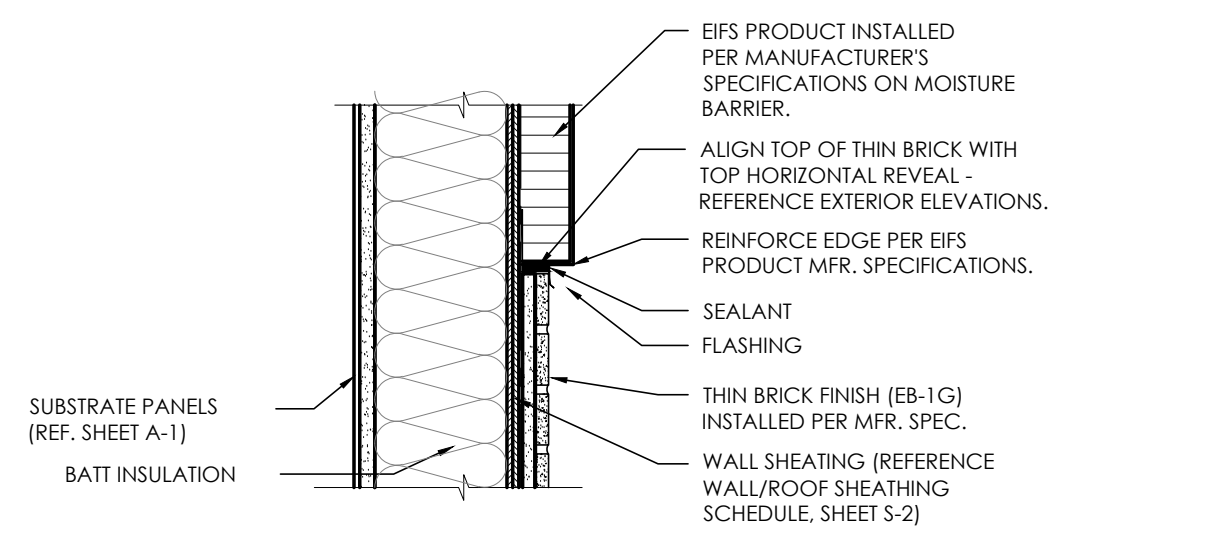
**B** BASE-SILL-HEADER DETAILS  
SCALE: 1 1/2" - 1'-0"



**C** DRIVE-THROUGH  
BASE-SILL-HEADER-CAP DETAILS  
SCALE: 1 1/2" - 1'-0"



**D** WAINSCOT/STUCCO TRANSITION  
SCALE: 1 1/2" - 1'-0"

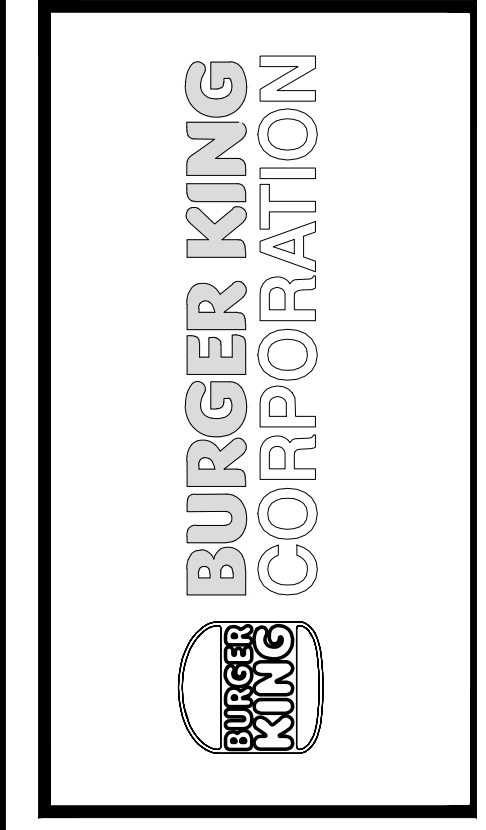


**E** THIN BRICK/STUCCO TRANSITION  
@ MAIN ENTRY WALL  
SCALE: 1 1/2" - 1'-0"

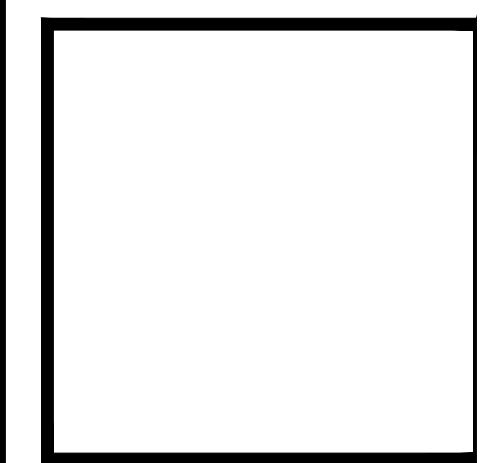
No.	Date	By	Notes
3	5/24/21	DB	PLANNING SUBMITTAL
4	7/27/21	DB	BUILDING SUBMITTAL
5	8/27/21	AS	BUILDING REVISIONS
6	10/29/21	AS	ENGINEERING REVISIONS
7	12/10/21	AS	BUILDING REVISIONS 2

Drawn By: CP  
Checked: SB  
Scale: AS NOTED  
Date: 03/24/21

ALL RIGHTS RESERVED. NO PART OF THESE DRAWINGS OR SPECIFICATIONS MAY BE REPRODUCED OR USED IN CONNECTION WITH ANY WORK OTHER THAN THE SPECIFIC PROJECT FOR WHICH THEY HAVE BEEN PREPARED, WITHOUT PRIOR WRITTEN AUTHORIZATION FROM THE ARCHITECT.



TECHNICAL GROUP, INC.  
PARAMOUNT, ILL. 60466  
P: (248) 426-6000 F: (248) 426-7004



PROJECT: BURGER KING #29300 - PORT RD. 6500 W. COUNTRY CLUB DR. CHICAGO, IL

SHEET TITLE: WALL SECTIONS AND DETAILS

DO NOT SCALE THIS PRINT. USE FIGURED DIMENSIONS ONLY.

JOB #: TG-21657

SHEET: A-9