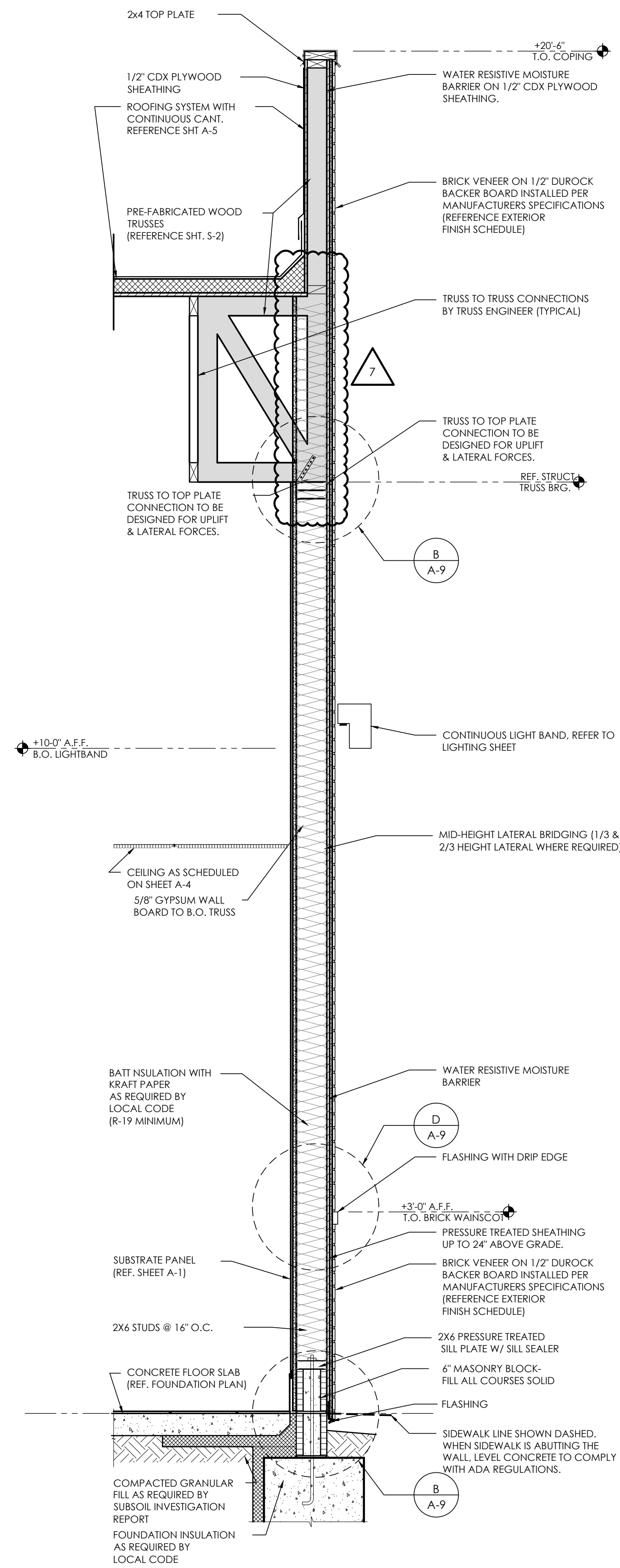
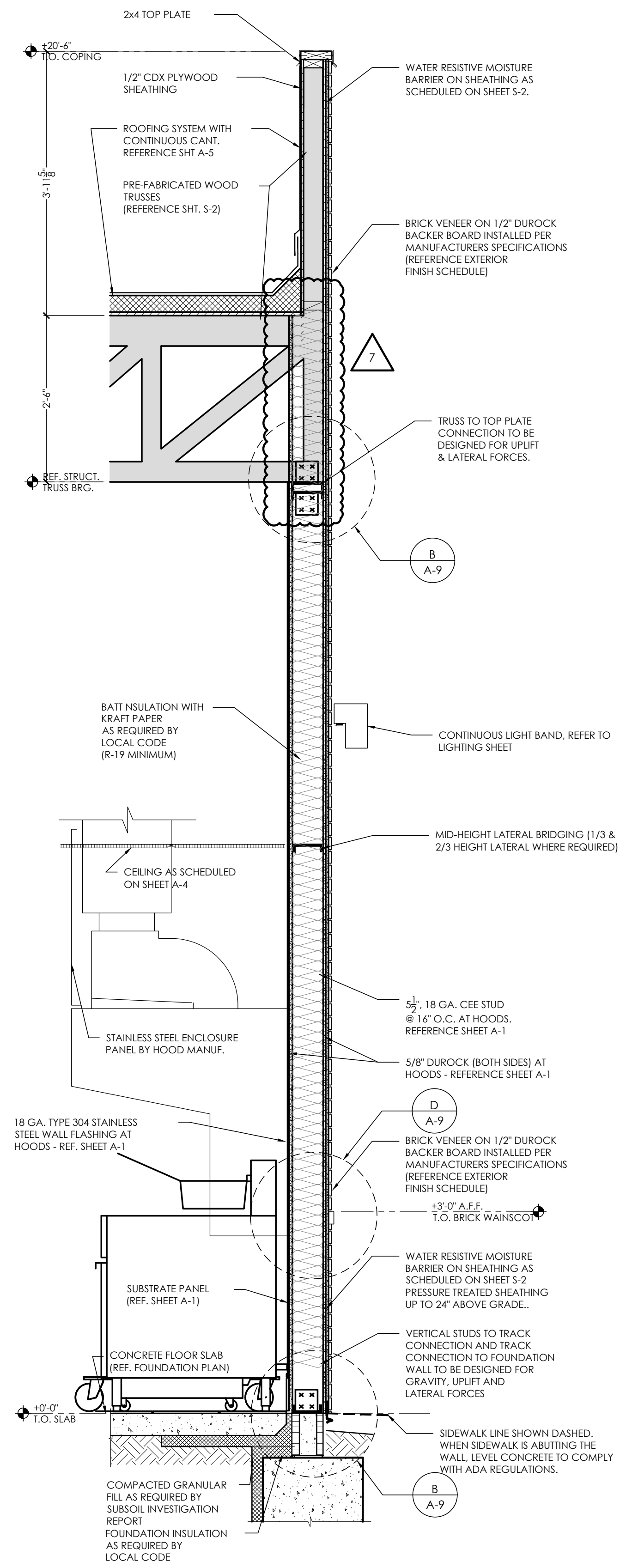


**1** KITCHEN SIDE WALL  
SCALE: 3 / 4" - 1'-0"



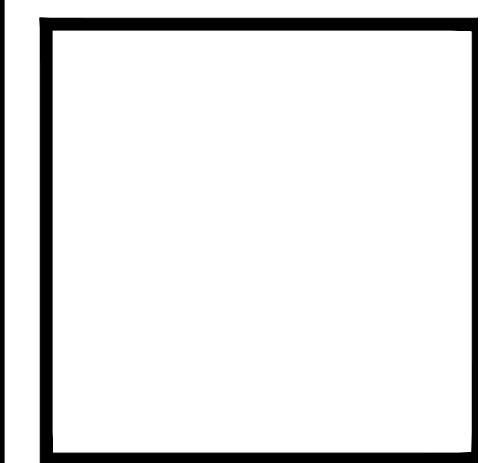
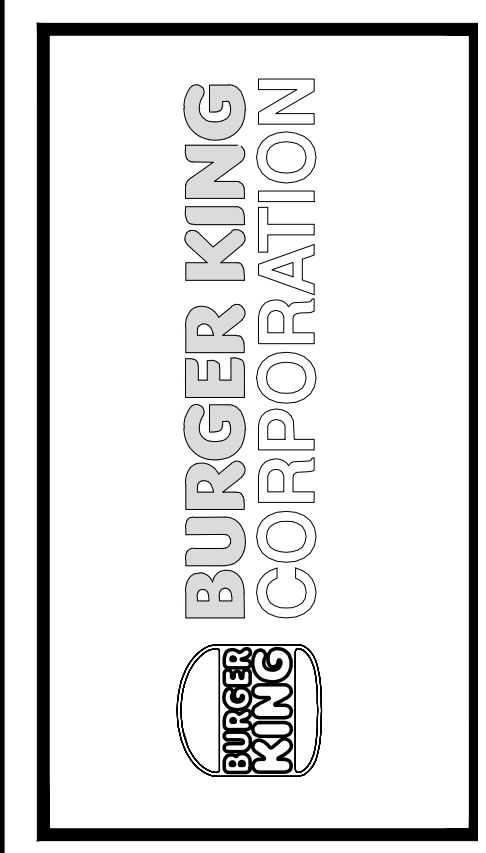
**2** REAR KITCHEN WALL  
SCALE: 3 / 4" - 1'-0"



**3** KITCHEN HOOD WALL  
SCALE: 3 / 4" - 1'-0"

No.	Date	By	Notes
3	5.26.21	DB	PLANNING SUBMITTAL
4	7.07.21	DB	BUILDING SUBMITTAL
5	8.27.21	AS	BUILDING REVISIONS
6	10.29.21	AS	ENGINEERING REVISIONS
7	12.10.21	AS	BUILDING REVISIONS 2

Drawn By: CP  
Checked: SB  
Scale: AS NOTED  
Date: 03.24.21



PROJECT BURGER KING #29300 - PORT RD. GROVE CITY, OH 43123	SHEET TITLE WALL SECTIONS AND DETAILS
DO NOT SCALE THIS PRINT. USE FIGURED DIMENSIONS ONLY.	
JOB # <b>TG-21657</b>	
SHEET <b>A-6</b>	

ALL RIGHTS RESERVED. NO PART OF THESE DRAWINGS OR SPECIFICATIONS MAY BE REPRODUCED OR USED IN CONNECTION WITH ANY WORK OTHER THAN THE SPECIFIC PROJECT FOR WHICH THEY HAVE BEEN PREPARED, WITHOUT PRIOR WRITTEN AUTHORIZATION FROM THE ARCHITECT.