

GENERAL ROOFING NOTES:

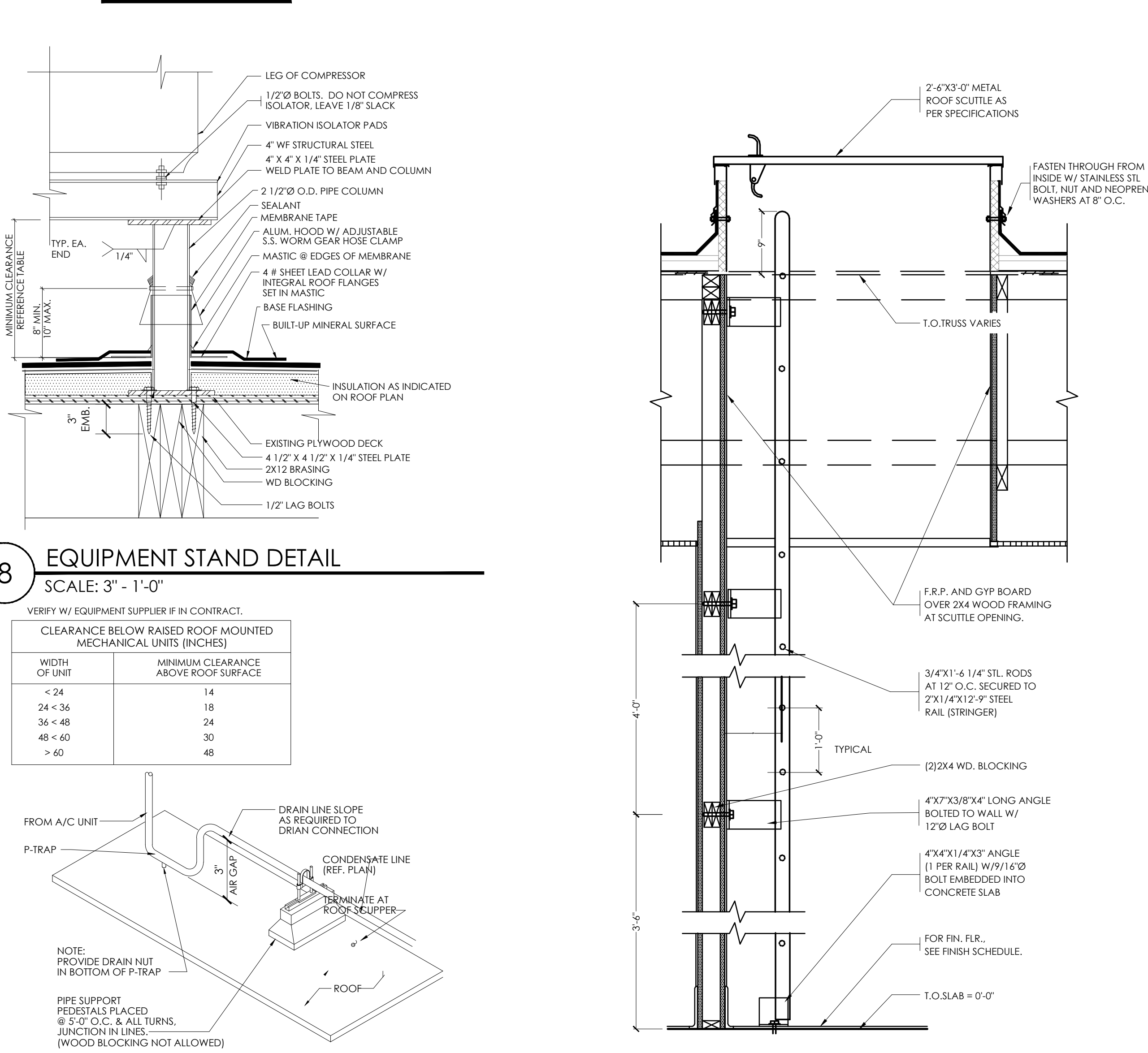
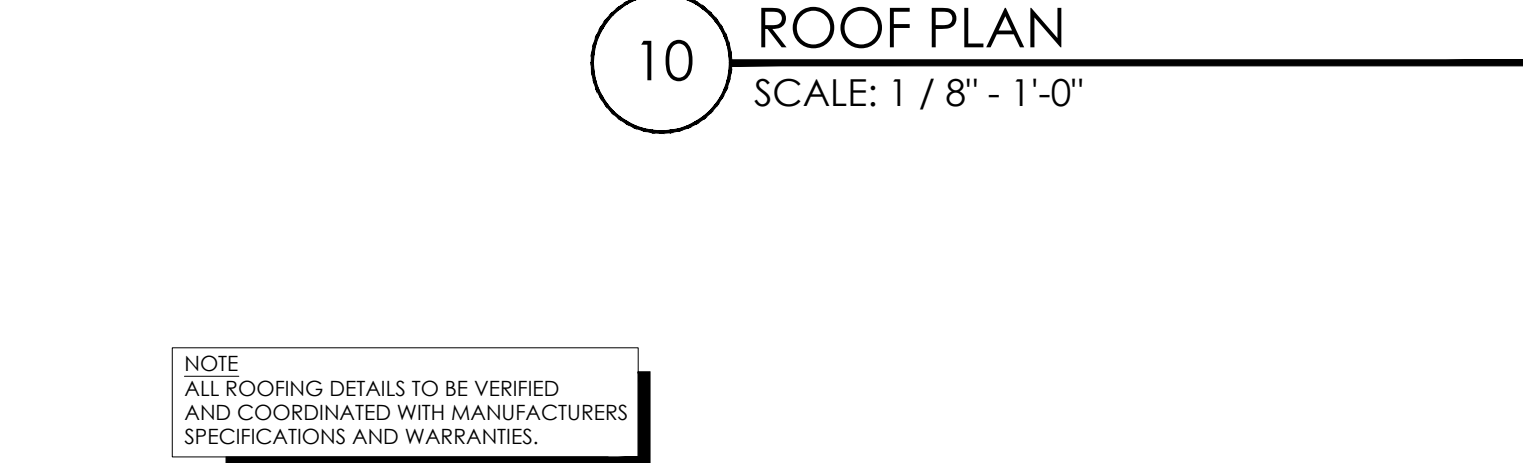
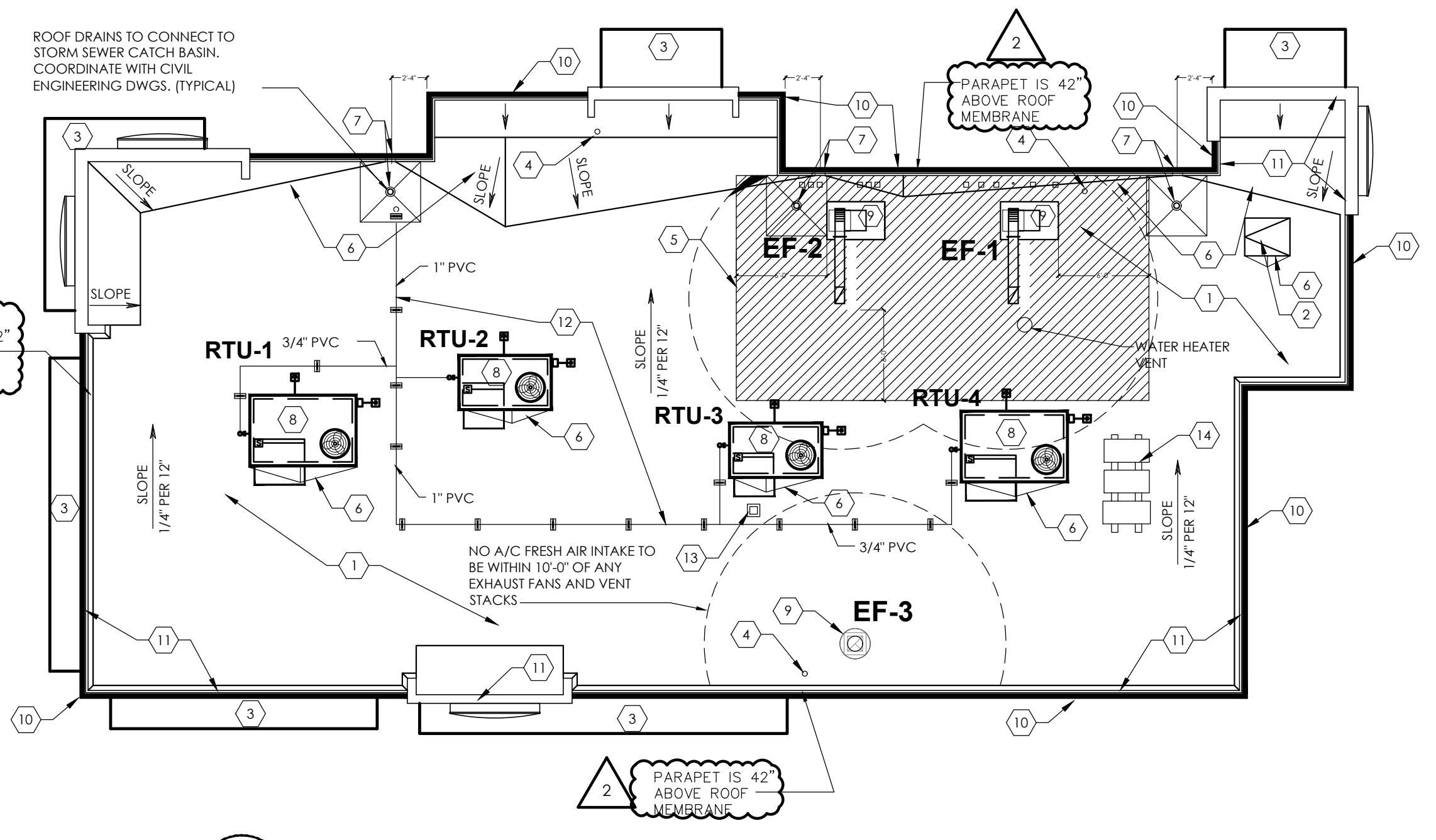
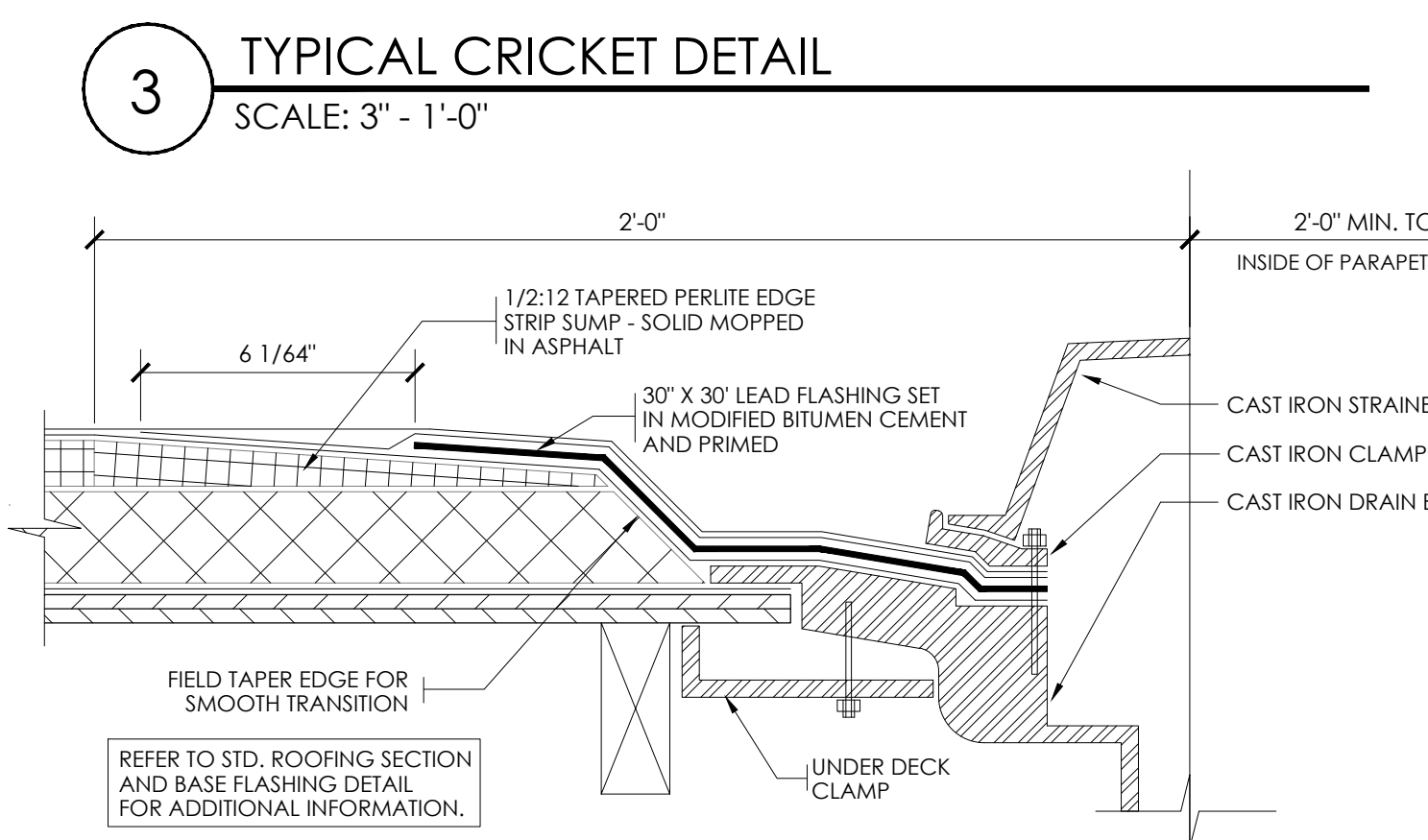
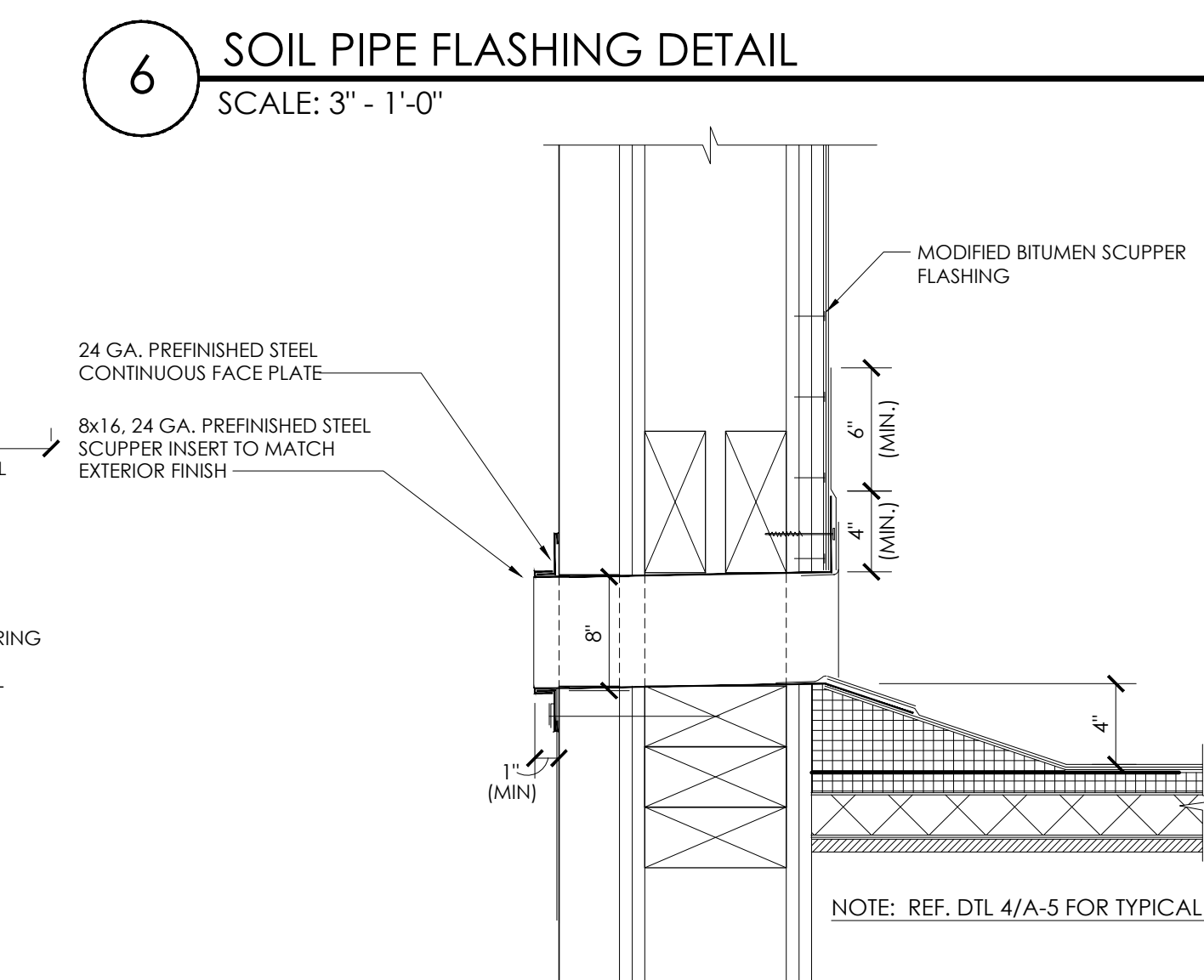
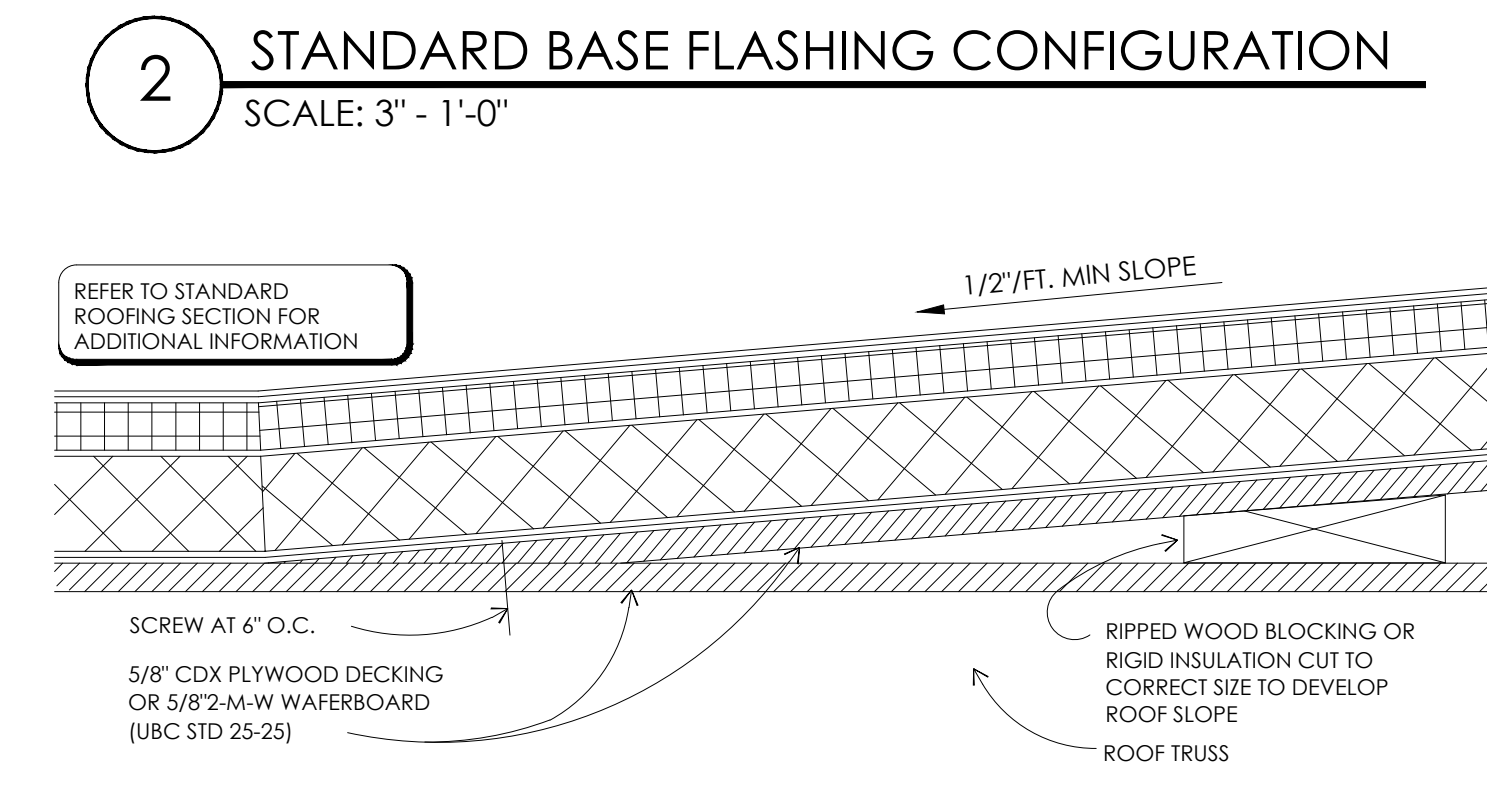
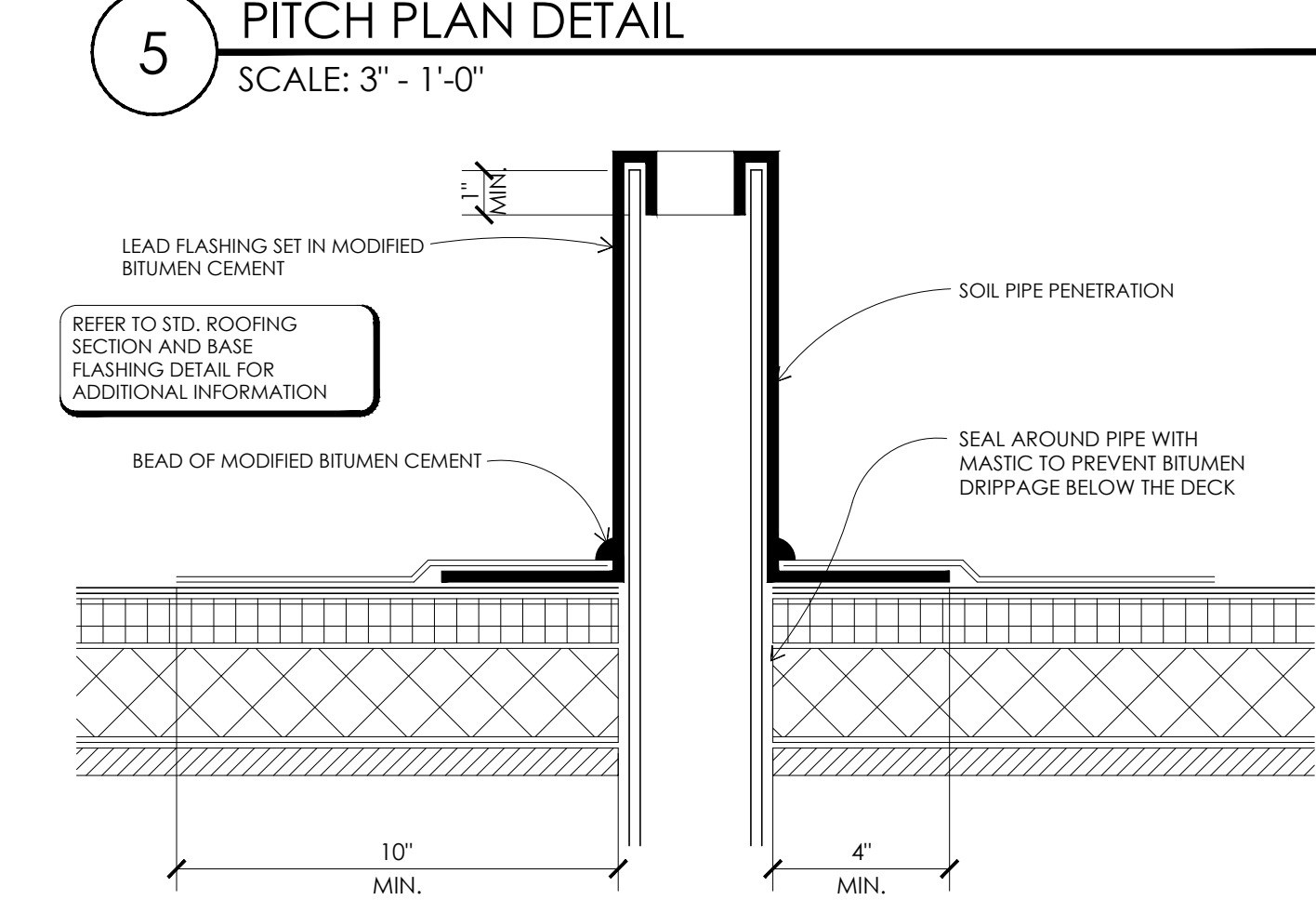
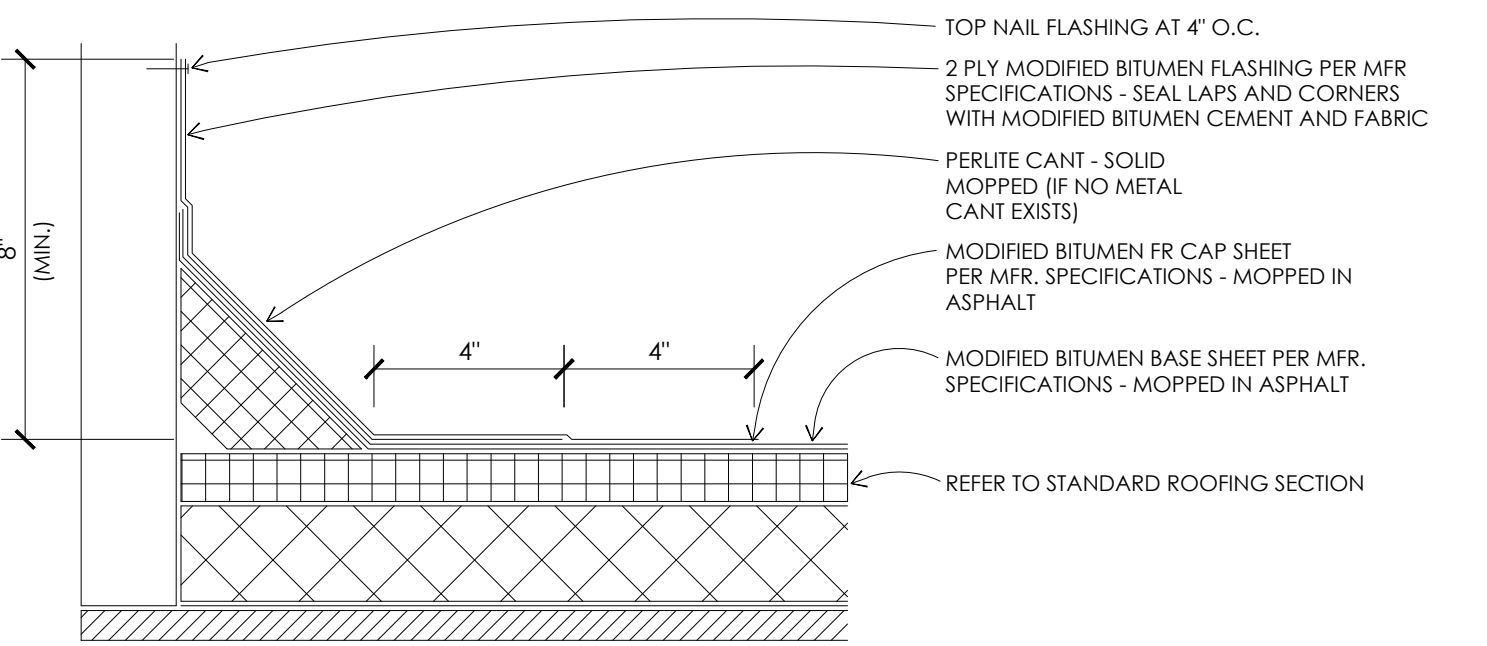
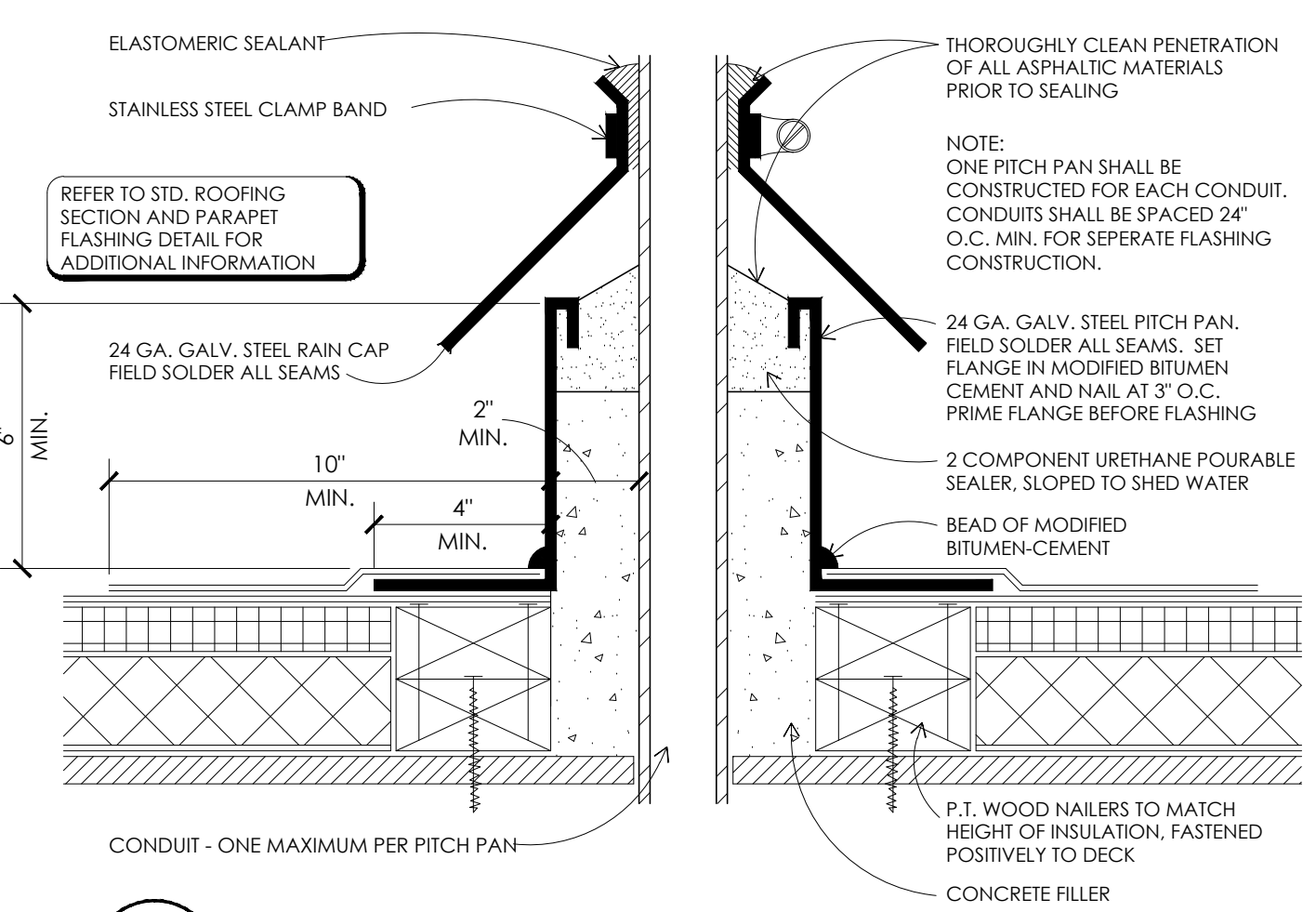
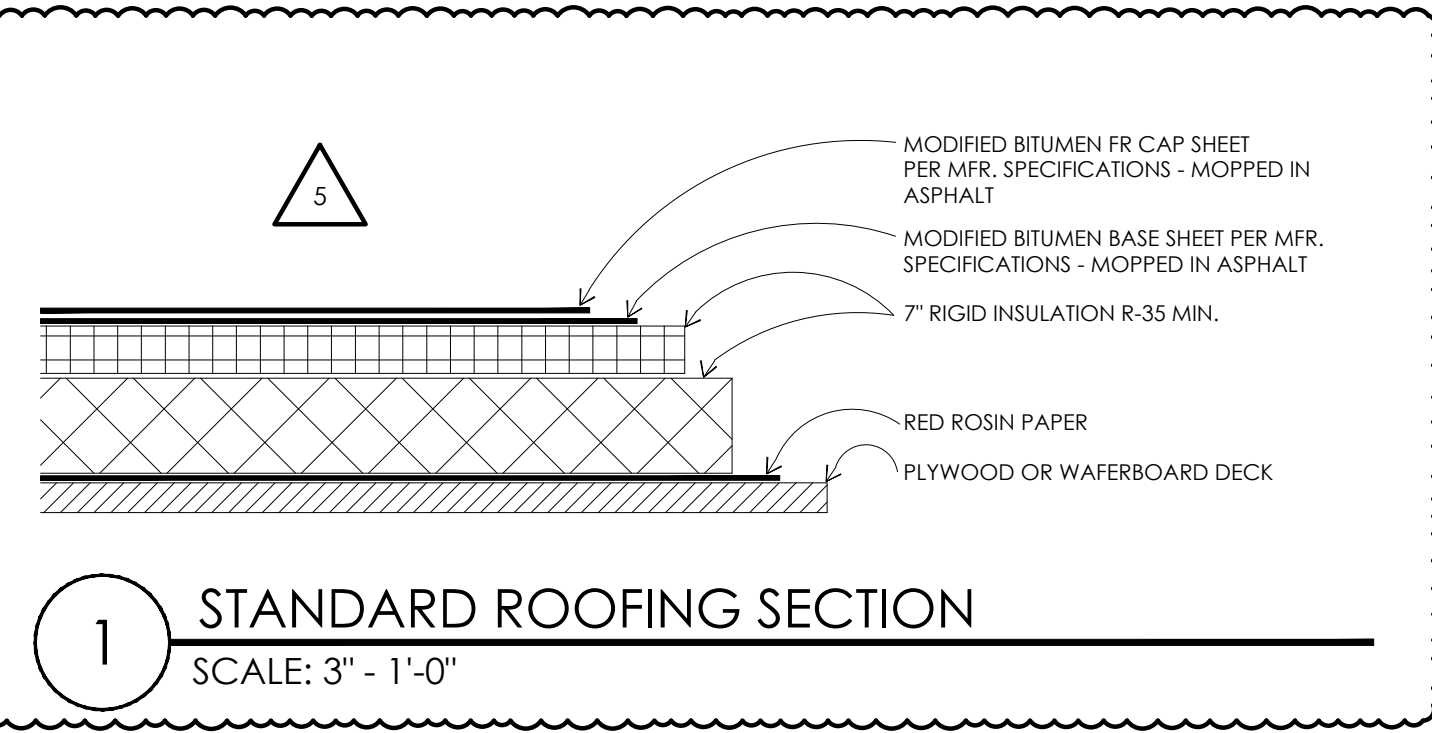
1. ROOFING SUBCONTRACTOR TO COORDINATE LOCATION OF H.V.A.C. UNITS AND ROOF TOP ACCESSORIES WITH STRUCTURAL, MECHANICAL, AND ELECTRICAL DRAWINGS FOR PLACEMENT AND TAPERED RIGID INSULATION BOARD LAY-OUT AND SUBSEQUENT INSTALLATION IN ORDER TO AVOID PONDING WATER CONDITIONS ATTRIBUTABLE TO BOARD LAY-OUT ISSUES.
2. ROOF SYSTEMS SPECIFIED SHALL BE PERMITTED ONLY BY MANUFACTURER APPROVED APPLICATOR IN ORDER TO MEET GUARANTEE REQUIREMENTS.
3. COORDINATE LOCATION OF MECHANICAL UNITS WITH STRUCTURAL AND MECHANICAL DRAWINGS.
4. HVAC CONDENSATE LINES TO TERMINATE AT ROOF DRAIN OR AS REQUIRED BY LOCAL CODE.
5. REFER TO STRUCTURAL AND M-E-P DRAWINGS FOR ADDITIONAL INFORMATION.
6. ALL CURBS AND PIPE PENETRATIONS SHALL HAVE A MINIMUM OF 16" CLEAR FROM EACH OTHER FOR ROOF FLASHING PURPOSES. ALL EQUIPMENT SHALL HAVE A MINIMUM OF 16" CLEAR FROM ALL ADJACENT PARAPETS. ALL HVAC MOUNTED EQUIPMENT (DISCONNECT BOXES, GFCI, PIPE SUPPORTS) SHALL NOT BE CLOSER THAN 16" FROM EACH OTHER OR CURB. NO UNSTRUCTURE PIPE SUPPORTS SHALL BE USED AS VERTICAL MEMBERS FOR MOUNTING EQUIPMENT TO ROOF SURFACE.
7. PONDING WATER IS DEFINED AS WATER THAT DOES NOT DRAIN OR DISSIPATE FROM THE ROOF WITHIN 48 HOURS AFTER PRECIPITATION.
8. CONTRACTOR SHALL "SUGAR-IN" ALL ASPHALT. BLEED-OUT ON PILES WITH ADDITIONAL GRANULES TO MATCH EXISTING COLORATION OF THE MINERAL SURFACE CAP SHEET.
9. ALL FLASHING CEMENTS, ASPHALTS, PRODUCTS AND ACCESSORIES SHALL BE APPROVED BY ROOFING MANUFACTURER WITH THE MANUFACTURER'S BRAND. ALL ASPHALTS SHALL BE AMERICAN MANUFACTURED PRODUCTS.

KEYED NOTES:

1. TWO-PLY MODIFIED BITUMEN MEMBRANE W/GLASS FIBER REINFORCEMENT. BOTTOM PLY SHALL BE UNSURFACED, TOP PLY SHALL HAVE WHITE MINERAL SURFACE.
2. ROOF ACCESS SCUTTLE. REFERENCE DETAIL, THIS SHEET.
3. PREFABRICATED METAL CANOPY. REFERENCE SHEETS A-7, A-8.
4. VENT THROUGH ROOF - PROVIDE PREFABRICATED DURO-LAST VENT FLASHING FOR ALL VENTS AND PIPE PENETRATIONS. REFERENCE DETAIL #6, THIS SHEET.
5. INSTALL MODIFIED BITUMEN SACRIFICE SHEET AS SPECIFIED AT KITCHEN EXHAUST.
6. ROOF CRICKET WITH SLOPE TO MATCH ROOF. REFER TO DETAIL #3, THIS SHEET.
7. ROOF DRAIN AND OVERFLOW ROOF SCUPPERS - REFER TO DETAILS #4 AND #7 THIS SHEET.
8. ROOFTOP AIR CONDITIONING UNIT - REFER TO MECHANICAL DRAWINGS.
9. EXHAUST FAN - REFER TO MECHANICAL DRAWINGS.
10. ILLUMINATED PARAPET LIGHT BAND.
11. METAL COPING.
12. PVC CONDENSATE DRAIN (SEE AS SHOWN) WITH PIPE SUPPORTS EVERY 5'-0". TERMINATE CONDENSATE DRAIN AT PRIMARY SCUPPER. REFER TO DETAIL #8, THIS SHEET FOR ADDITIONAL INFORMATION.
13. PROVIDE PITCH PAN WITH CONDUIT OVER OFFICE FOR SATELLITE DISH/ANTENNA.
14. EQUIPMENT STAND FOR WALK-IN BOX COOLER/FREEZER CONDENSERS AND ICE MACHINE CONDENSER. REFER TO EQUIPMENT STAND DETAIL, THIS SHEET.

GENERAL NOTES:

- A. THE ROOF STRUCTURE SHALL NOT BE USED FOR STOCKPILING OF EQUIPMENT OR MATERIALS UNLESS APPROVED BY THE ARCHITECT, STRUCTURAL ENGINEER AND THE JOIST MANUFACTURER.
- B. THE ROOFING SYSTEM SHALL BE AS PER DRAWINGS AND PER MANUFACTURERS SPECIFICATIONS.
- C. COORDINATE ROOF ELEVATIONS WITH STRUCTURAL DRAWINGS. REFER TO SPECIFICATION SHEET FOR ROOF RELATED ITEMS, INCLUDING GUARANTEES, CURBS, FLASHING, ETC.

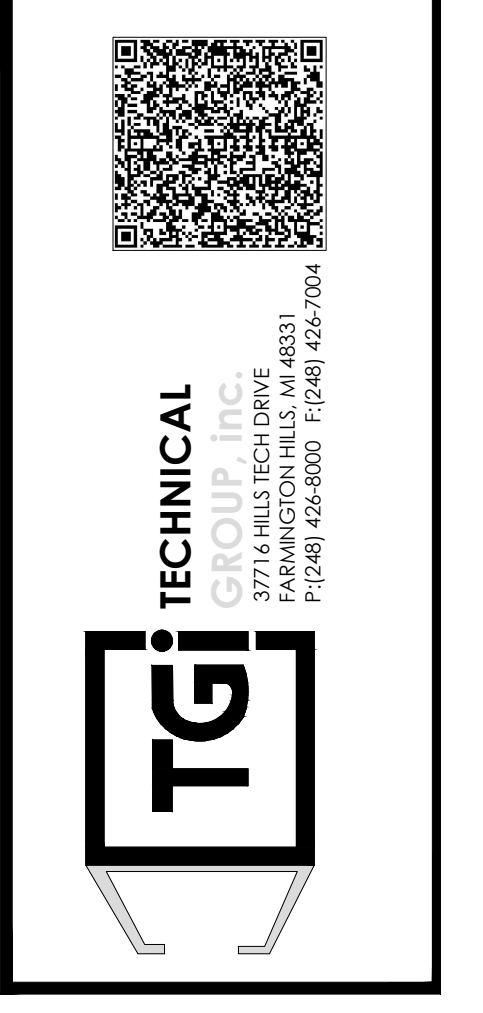
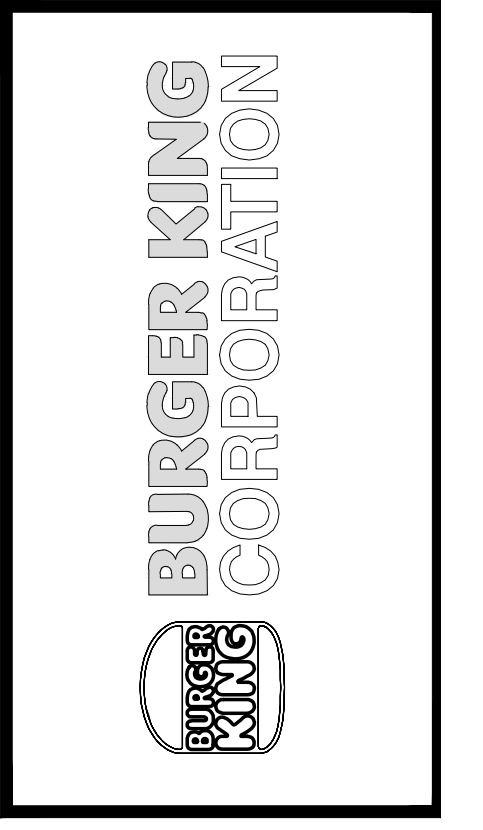


VERIFY W/ EQUIPMENT SUPPLIER IF IN CONTRACT.

CLEARANCE BELOW RAISED ROOF MOUNTED MECHANICAL UNITS (INCHES)	
WIDTH OF UNIT	MINIMUM CLEARANCE ABOVE ROOF SURFACE
< 24	14
24 < 36	18
36 < 48	24
48 < 60	30
> 60	48

No.	Date	By	Notes
3	5/26/21	DB	PLANNING SUBMITTAL
4	7/27/21	DB	BUILDING SUBMITTAL
5	8/27/21	AS	BUILDING REVISIONS
6	10/29/21	AS	ENGINEERING REVISIONS
7	12/10/21	AS	BUILDING REVISIONS 2

Drawn By: CP
Checked: SB
Scale: AS NOTED
Date: 03.24.21



PROJECT BURGER KING #29300 - PORT RD. GRAVE CITY, OH 43024	SHEET TITLE ROOF PLAN AND DETAILS
DO NOT SCALE THIS PRINT. USE FIGURED DIMENSIONS ONLY.	
JOB # TG-21657	SHEET A-5