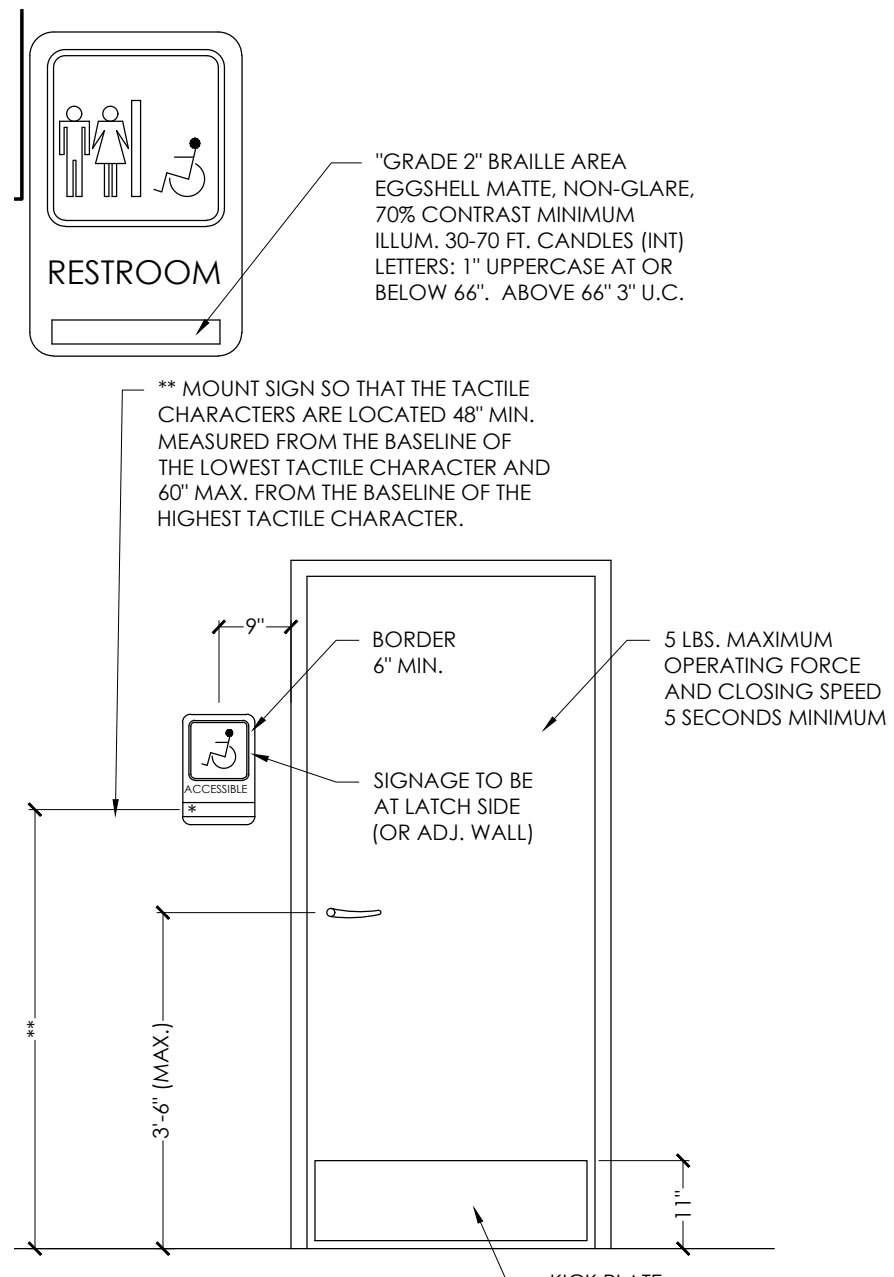


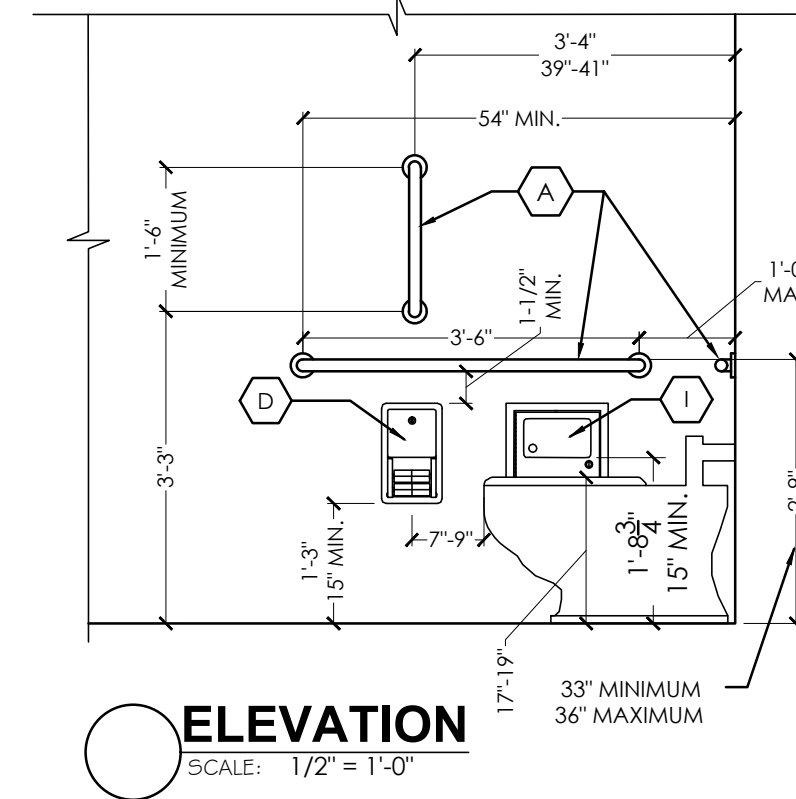
**RESTROOM PLAN**

SCALE: 1/2" = 1'-0"



**RESTROOM SIGN DETAIL**

SCALE: 1/2" = 1'-0"



**ELEVATION**

SCALE: 1/2" = 1'-0"

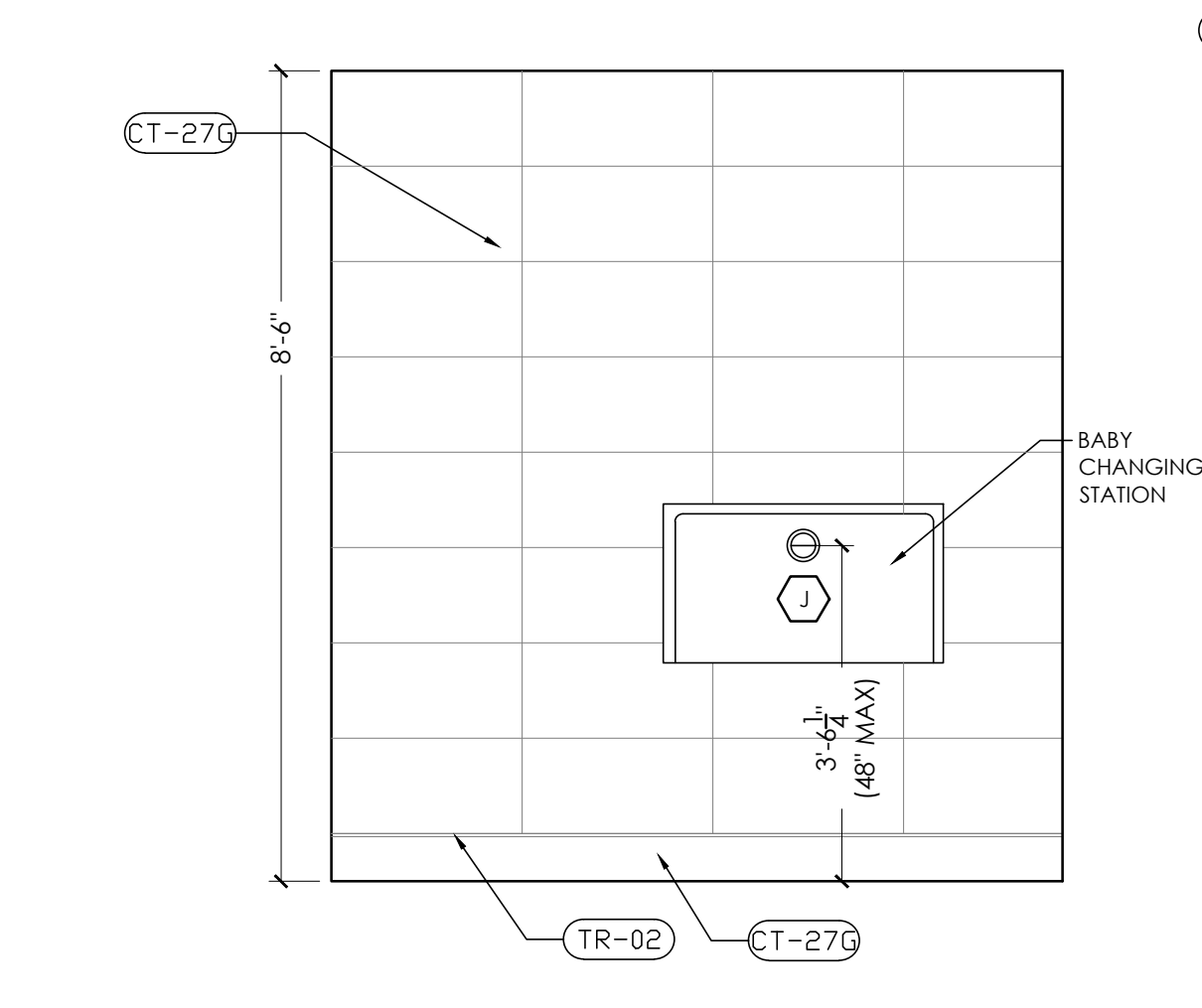
**GENERAL NOTES:**

- A. FOR INTERIOR FINISHES, REFER TO INTERIOR DECOR SHEETS.
- B. PLUMBING FIXTURES TO BE PROVIDED BY THE GENERAL CONTRACTOR.
- C. ALL PLUMBING FIXTURES, FAUCETS AND ACCESSORIES TO BE ADA COMPLIANT
- D. ALL EXPOSED PIPING UNDER LAVATORIES TO BE INSULATED TO PROTECT FROM CONTACT. THERE SHALL BE NO SHARP OR ABRASIVE SURFACES UNDER LAVATORIES.

**RESTROOM ACCESSORIES:**

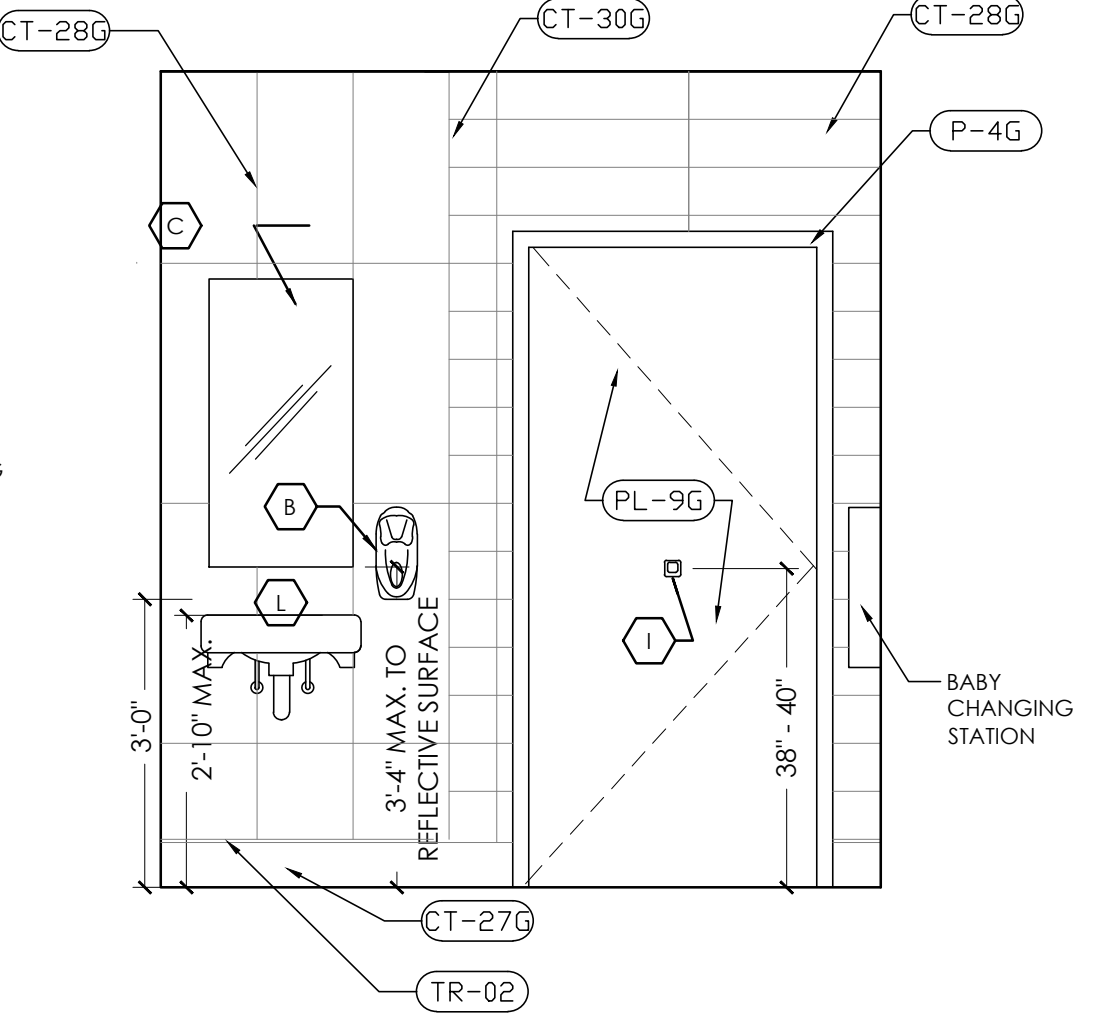
- A** GRAB BAR: BOBRICK 250 LBF. MINIMUM 33" MIN. TO 36" MAX. HEIGHT TO THE TOP OF THE GRIPPING SURFACE. PROVIDE THE REQUIRED QUANTITY AND LENGTH AS INDICATED ON THE DRAWINGS OR AS REQUIRED BY THE GOVERNING CODE. THE BAR SHALL BE 1-1/2" IN DIAMETER AND MOUNTED WITH 1-1/2" CLEARANCE FROM THE WALL.
  - B** WALL MOUNTED SOAP DISPENSER AND HAND SANITIZER DISPENSER (36" MAX. HEIGHT) SUPPLIED BY "ECOLAB" AND INSTALLED BY THE G.C. NOTE: SOAP AND HAND SANITIZER DISPENSERS TO BE PROVIDED AT EACH KITCHEN HANDSINK.
  - C** MIRROR: (BOTTOM OF REFLECTIVE SURFACE AT 40" MAXIMUM HEIGHT) MODEL B-165-1836 (18"x36") STAINLESS STEEL CHANNEL FRAME MIRROR WITH THEFT RESISTANT SCREWS BY BOBRICK OR APPROVED EQUIVALENT.
  - D** TOILET PAPER HOLDER: OPTION 1: BOBRICK B-3888, SUPPLIER - HAINES JONES & CADBURY OPTION 2: 9" TWIN JUMBO MODEL #58250 BY NORTH AMERICAN CORPORATION.
  - E** PAPER WASTE RECEPTACLE: (REQUIRED) MODEL B-3644 AS MANUFACTURED BY BOBRICK OR APPROVED EQUIVALENT. (ROUGH OPENING 17-3/16"W x 30-5/8"H x 8-1/8"D MIN.)
  - F** REQUIRED - PAPER TOWEL DISPENSER: BOBRICK B-359 SUPPLIED BY HAINES JONES & CADBURY AND INSTALLED BY THE G.C.
- OPTIONAL (IN ADDITION TO PAPER TOWEL DISPENSER):  
 ELECTRIC HAND DRYER: ASI ROVAL SERIES AUTOMATIC TOUCH-FREE SENSOR HAND DRYER.  
 MODEL: ASI ROVAL 20199  
 NOTE: HAND DRYER TO BE INSTALLED AT A MAXIMUM HEIGHT OF 48" FROM FINISH FLOOR ELEVATION TO TOP OF SENSOR OR PER ADA REQUIREMENTS.  
 NOTE: PROVIDE PAPER TOWEL DISPENSER "SAN JAMAR" MODEL #T-1490BK AT EACH HAND SINK IN KITCHEN.

NOTE:  
 REFER TO 20/20 GARDEN GRILL DECOR GUIDELINES FOUND AT DESIGNWITHBK.COM (INTERIOR DESIGN GUIDELINES) FOR REQUIRED RESTROOM GRAPHICS.



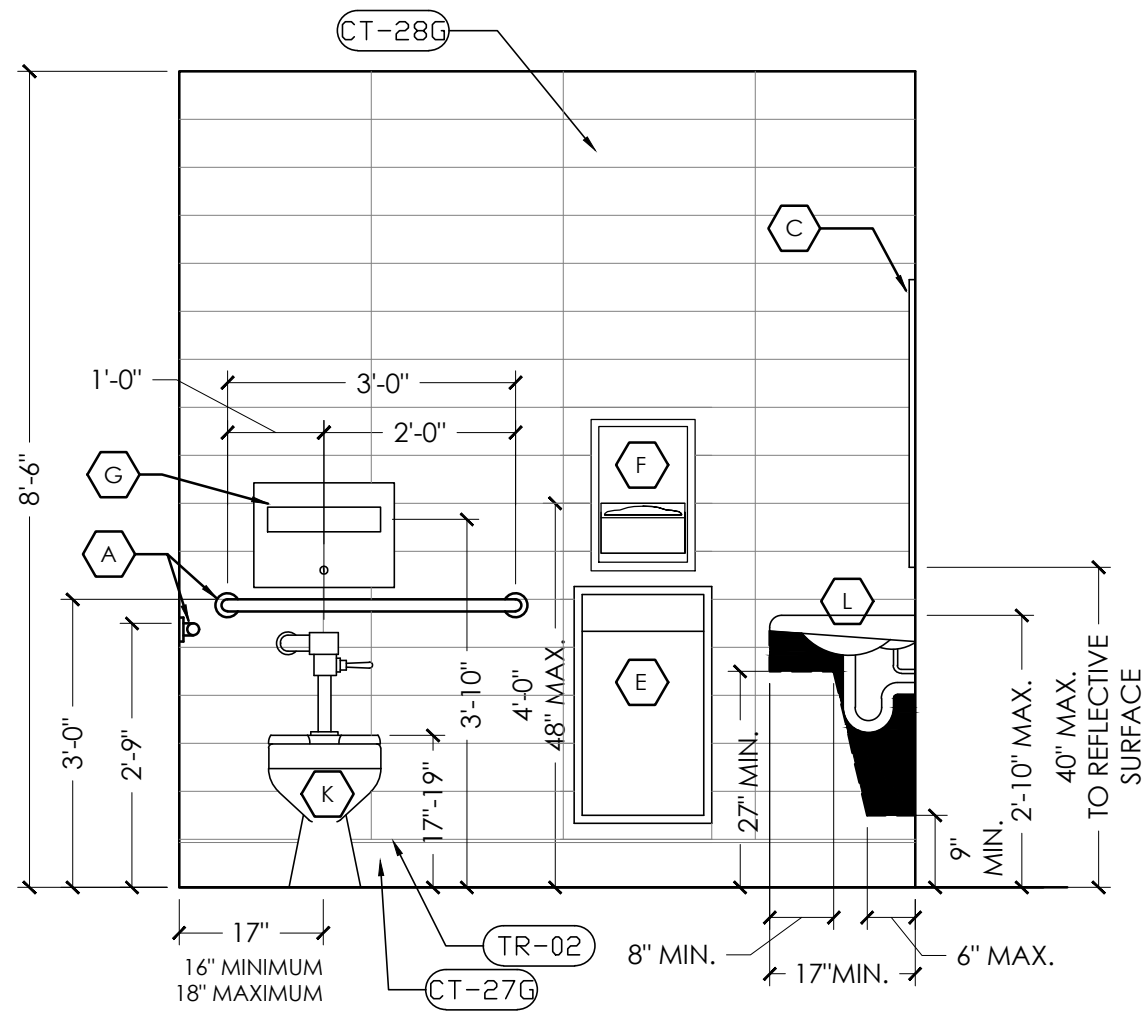
**1 ELEVATION**

SCALE: 1/2" = 1'-0"



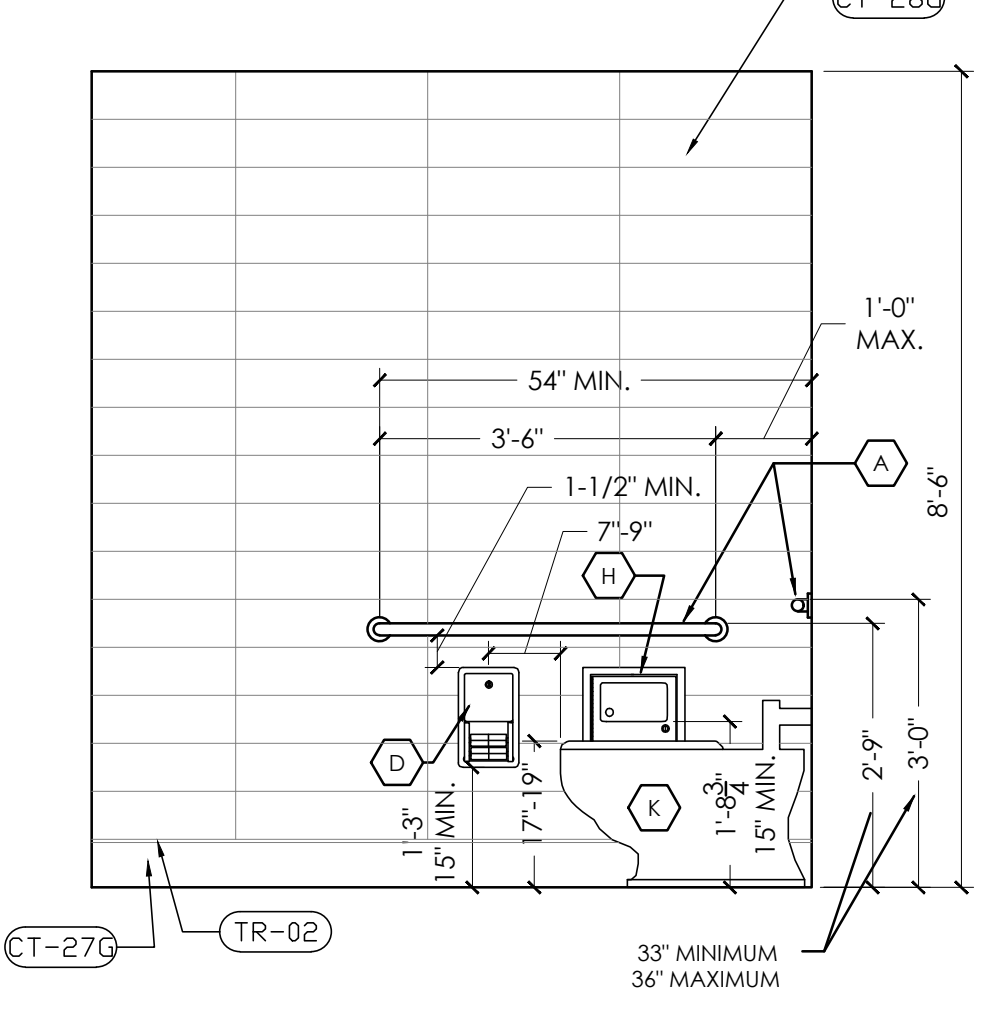
**2 ELEVATION**

SCALE: 1/2" = 1'-0"



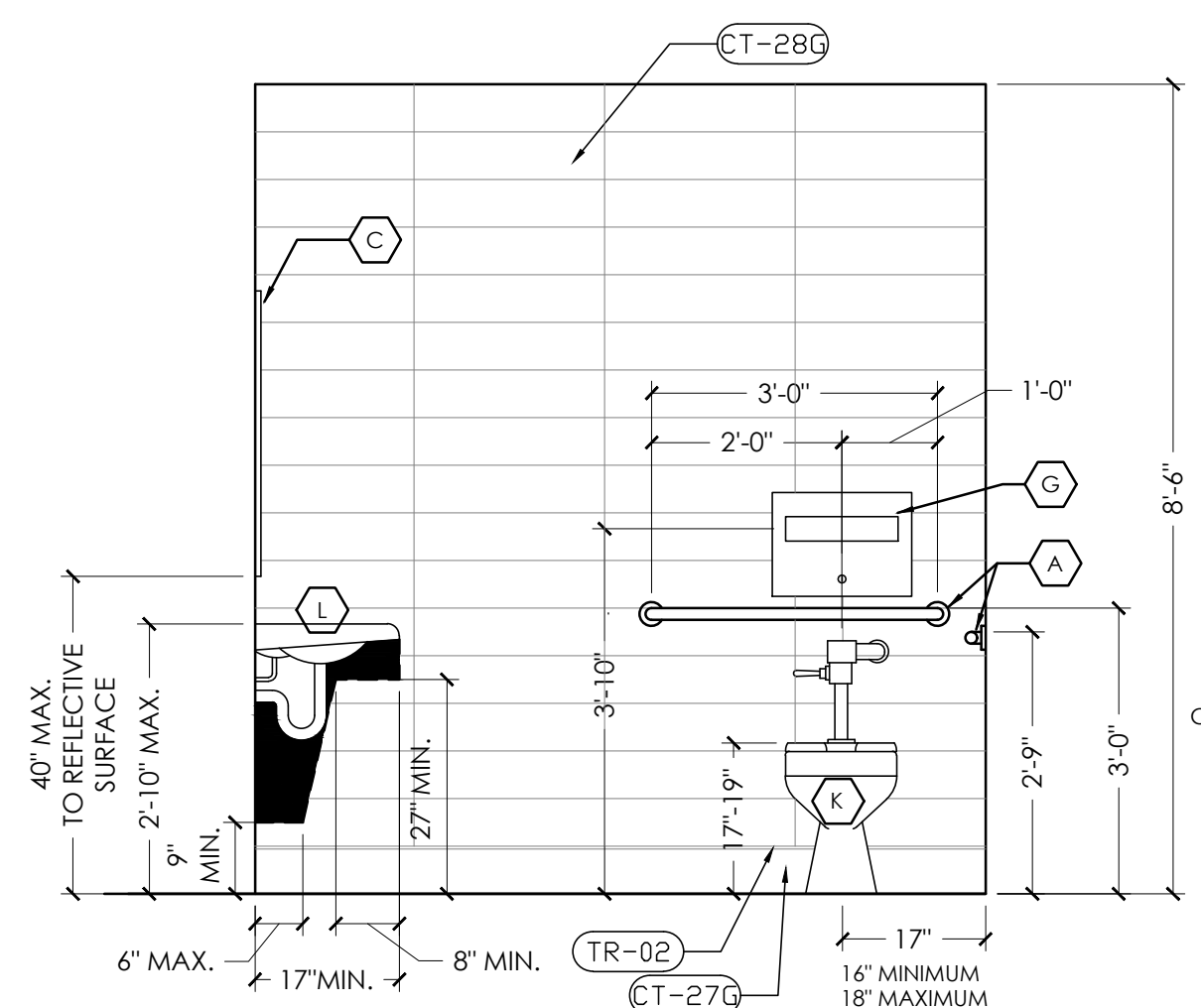
**3 ELEVATION**

SCALE: 1/2" = 1'-0"



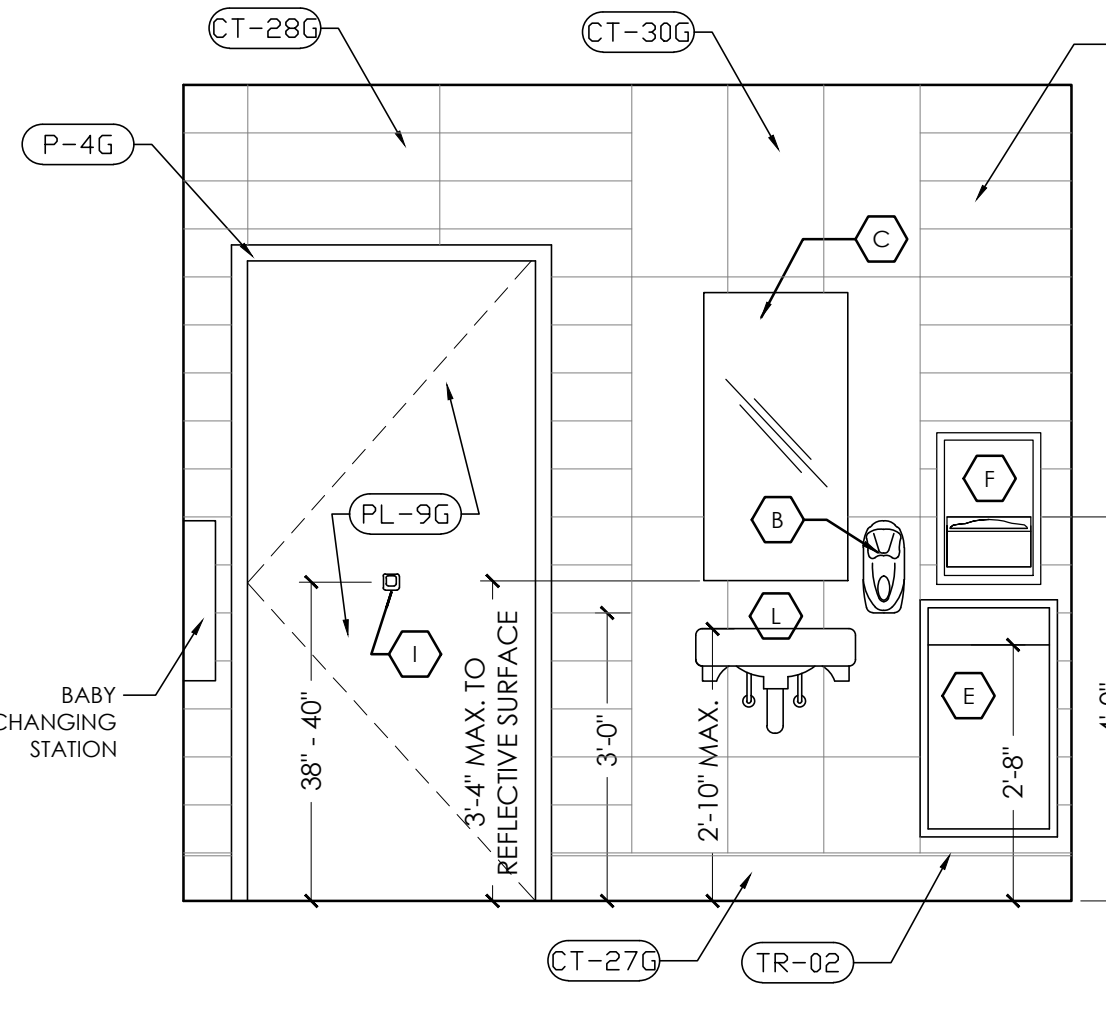
**4 ELEVATION**

SCALE: 1/2" = 1'-0"



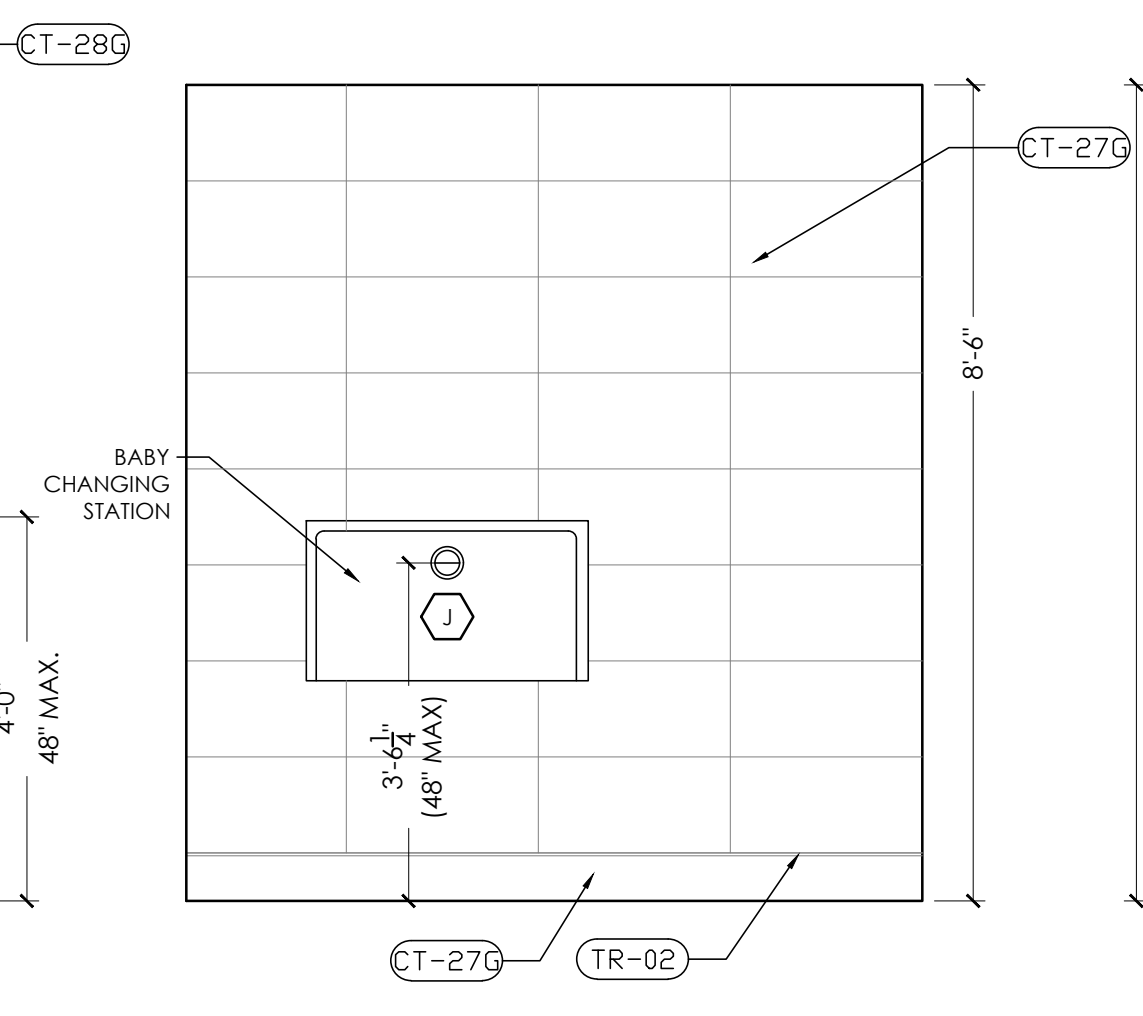
**5 ELEVATION**

SCALE: 1/2" = 1'-0"



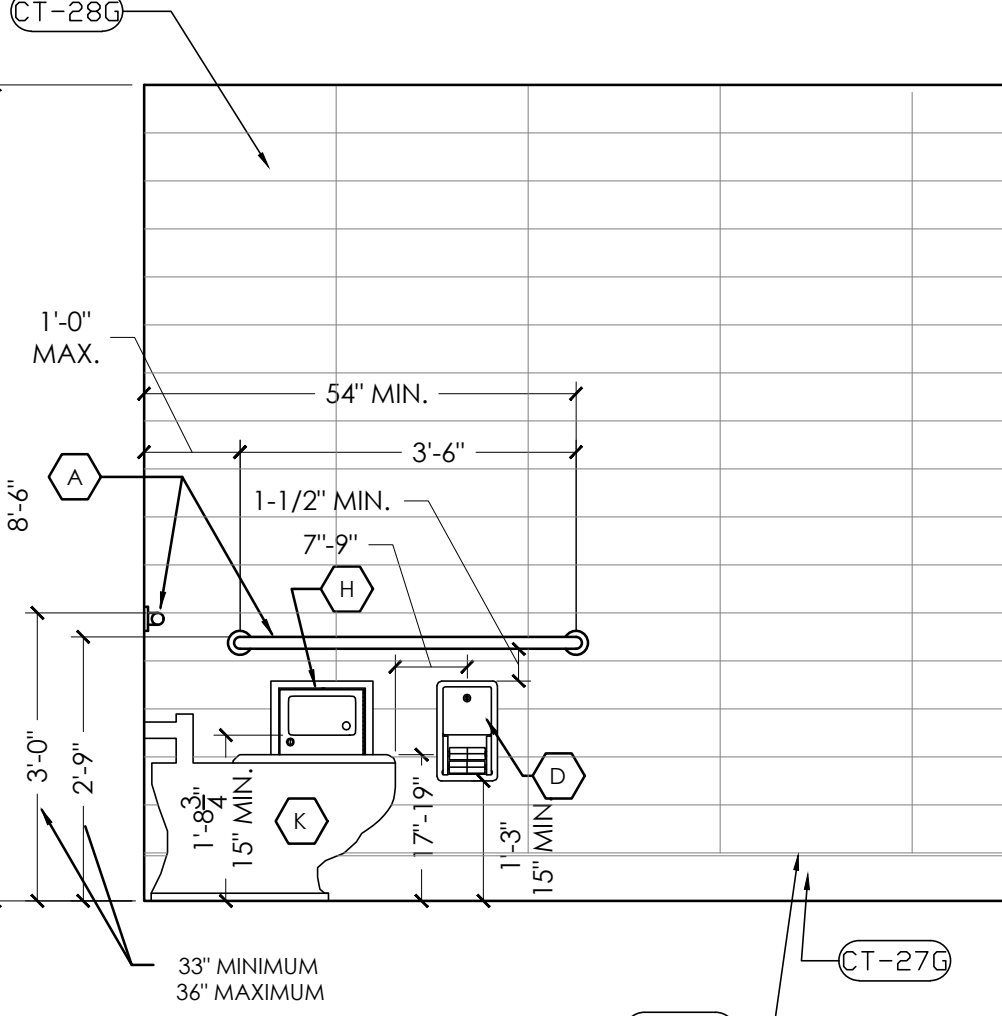
**6 ELEVATION**

SCALE: 1/2" = 1'-0"



**7 ELEVATION**

SCALE: 1/2" = 1'-0"



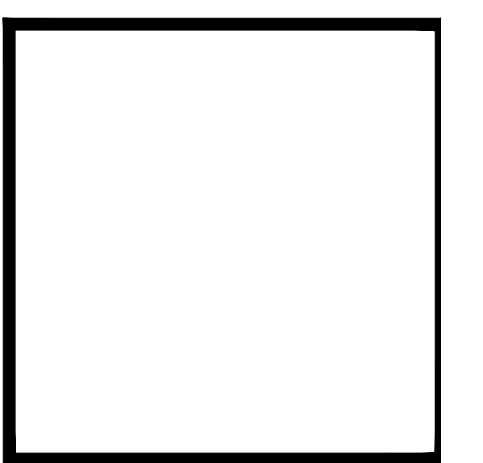
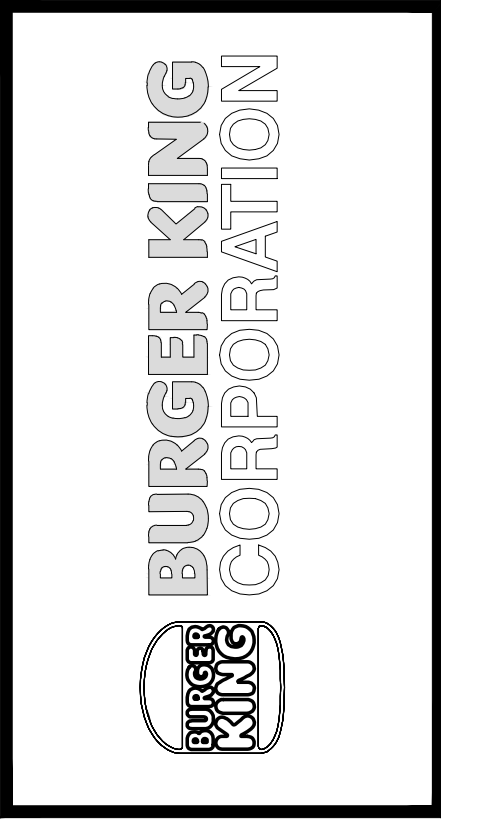
**8 ELEVATION**

SCALE: 1/2" = 1'-0"

- G** TOILET SEAT COVER DISPENSER: BOBRICK B-3013, SUPPLIER - HAINES JONES & CADBURY
- H** SANITARY NAPKIN DISPOSAL: BOBRICK B-353, RECESSED.
- I** COAT HOOK: BOBRICK MODEL B-6717 TO BE MOUNTED ON INSIDE OF EACH RESTROOM DOOR FOR SINGLE OCCUPANCY RESTROOMS AND EACH RESTROOM STALL DOOR FOR MULTIPLE OCCUPANCY RESTROOMS. MOUNT AT 38"-40" A.F.F. FOR ADA ACCESSIBLE LOCATIONS AND AT 48" A.F.F. MAXIMUM FOR NON-ADA ACCESSIBLE LOCATIONS.
- J** BABY CHANGING STATION: KOALA KARE #KB110-SSWM (HORIZONTAL) WALL MOUNTED OR #KB200-01 (HORIZONTAL) WALL MOUNTED IN GREY. SANITARY BED LINERS FOR BABY CHANGING STATION: KOALA KARE #KB150-99 NOTE: CHANGING STATION OPTION TO COMPLY WITH ALL ACCESSIBILITY REQUIREMENTS. PROVIDE BLOCKING AS REQUIRED FOR STATION SUPPORT.
- K** WATER CLOSET: AMERICAN STANDARD - MADERA FLOWISE 15" HEIGHT ELONGATED FLUSHOMETER TOILET, SUPPLIER - HAINES JONES & CADBURY
- L** LAVATORY: CUSTOM THROUGH SINK "GLACIER WHITE" COMMERCIAL INTERIORS MANUFACTURING (CIM) OR HAINES JONES & CADBURY

No.	Date	By	Notes
3	5/26/21	DB	PLANNING SUBMITTAL
4	7/27/21	DB	BUILDING SUBMITTAL
5	8/27/21	AS	BUILDING REVISIONS
6	10/29/21	AS	ENGINEERING REVISIONS
7	12/10/21	AS	BUILDING REVISIONS 2

Drawn By: CP  
 Checked: SB  
 Scale: AS NOTED  
 Date: 03/24/21



PROJECT BURGER KING #99300 - PORT RD. GRAVE CITY, OH 43024	SHEET TITLE PROPOSED RESTROOM ELEVATIONS AND DETAILS
DO NOT SCALE THIS PRINT. USE FIGURED DIMENSIONS ONLY.	
JOB # <b>TG-21657</b>	
SHEET <b>A-3.1</b>	