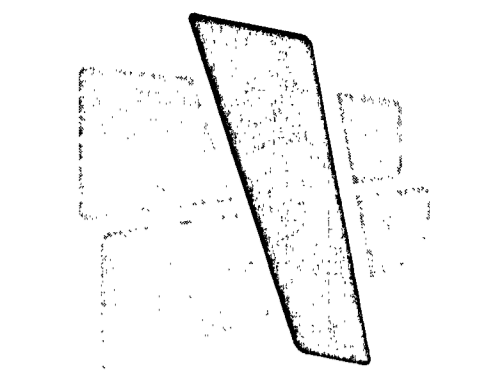
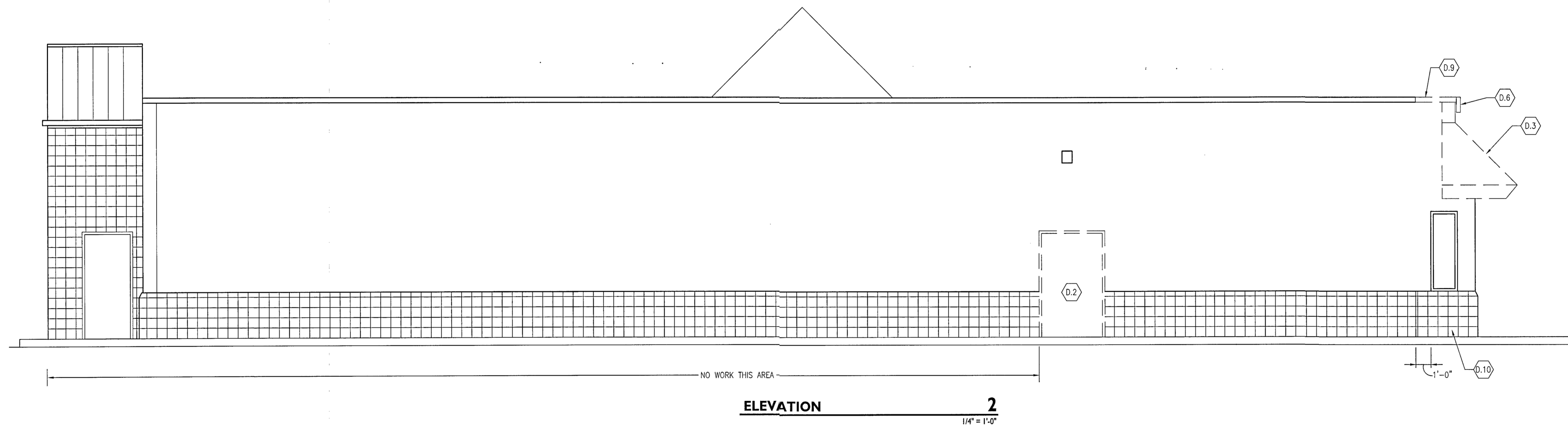


DEMO KEY NOTES

- D.1 REMOVE EXISTING STOREFRONT DOORS AND HARDWARE. PREP EXISTING FRAME TO RECEIVE NEW DOORS AND HARDWARE.
- D.2 REMOVE EXISTING HOLLOW METAL DOOR AND FRAME. PREP OPENING FOR NEW DOOR AND FRAME.
- D.3 REMOVE EXISTING MANSARD ROOF SYSTEM TO EXTENTS SHOWN.
- D.4 REMOVE EXISTING EIFS AND PREP EXISTING SHEATHING FOR NEW EIFS OR BRICK VENEER AS SHOWN ON SHEET A2.2.
- D.5 REMOVE EXISTING BUILDING SIGNAGE. RETAIN FOR REUSE.
- D.6 REMOVE EXISTING LIGHTED BAND ASSEMBLY AROUND ENTIRE BUILDING AS SHOWN.
- D.7 REMOVE EXISTING ALUMINUM STOREFRONT WINDOW GLAZING PANEL AND FRAMING AT THIS OPENING ONLY. PREP OPENING FOR WALL INFILL.
- D.8 REMOVE EXISTING DRIVE-THRU WINDOWS. PREP OPENING FOR NEW SLIDING DRIVE-THRU WINDOWS. REMOVE EXISTING BOLLARDS.
- D.9 PREP EXISTING COOLER SURFACE FOR NEW EIFS FINISH OR MASONRY VENEER AS SHOWN ON ELEVATIONS. COORDINATE WITH WALL SECTIONS.
- D.10 REMOVE EXISTING ALUMINUM COPING. PREP FOR NEW COPING AS SHOWN ON ELEVATIONS.
- D.11 REMOVE STOREFRONT ENTRY SYSTEM. PREP OPENING FOR WALL INFILL AND NEW STOREFRONT ENTRY SYSTEM. SEE NEW ELEVATIONS SHEET A2.1.

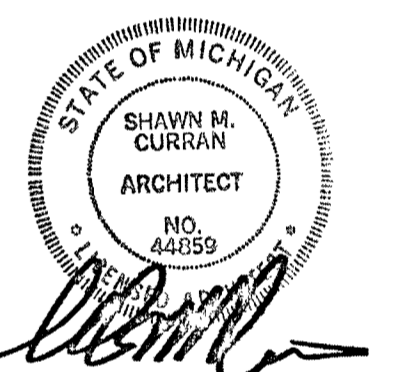


CURRAN
ARCHITECTURE

5719 LAWTON LOOP E. DR. #212
INDIANAPOLIS, IN 46216
O :: 317.288.0681
F :: 317.288.0753

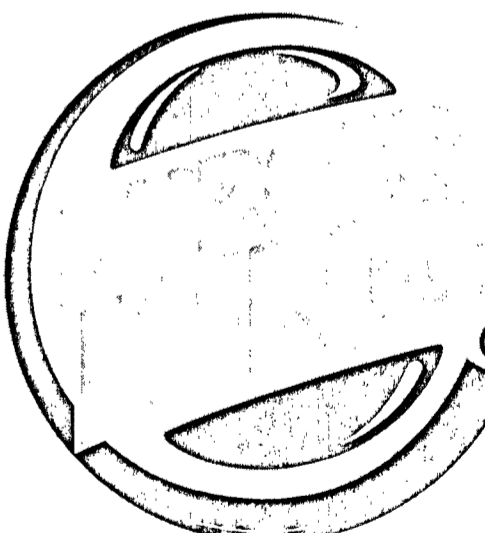


2100 RIVEREDGE PARKWAY
SUITE 850
ATLANTA, GA 30328
O :: 770.933.5023
F :: 770.933.5024



THIS DRAWING AND THE IDEAS, DESIGNS AND CONCEPTS CONTAINED HEREIN ARE THE EXCLUSIVE INTELLECTUAL PROPERTY OF CURRAN ARCHITECTURE AND ARE NOT TO BE USED OR REPRODUCED, WHOLE OR IN PART, WITHOUT THE WRITTEN CONSENT OF CURRAN ARCHITECTURE. © COPYRIGHT 2021, CURRAN ARCHITECTURE

REMODEL TO:
BURGER KING #13694
2029 S. SAGINAW RD.
MIDLAND, MI 48640



FOR CONSTRUCTION 06-25-2021

PROJECT NUMBER: 190379

DEMOLITION
ELEVATIONS

A2.2