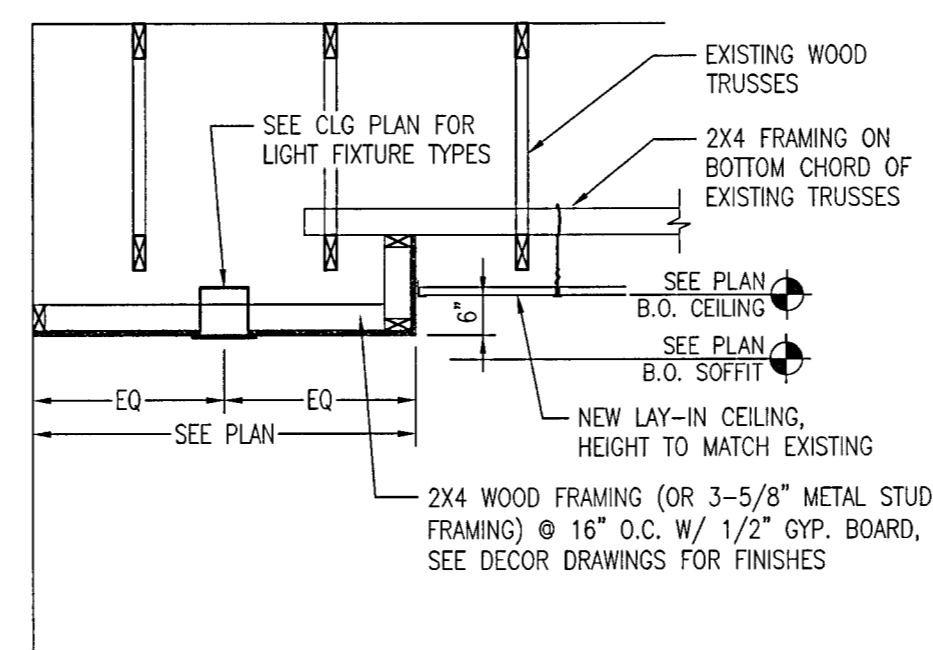
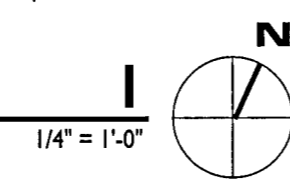


NEW CEILING PLAN



TYPICAL BULKHEAD DETAIL 2
1/2" = 1'-0"

CEILING LEGEND

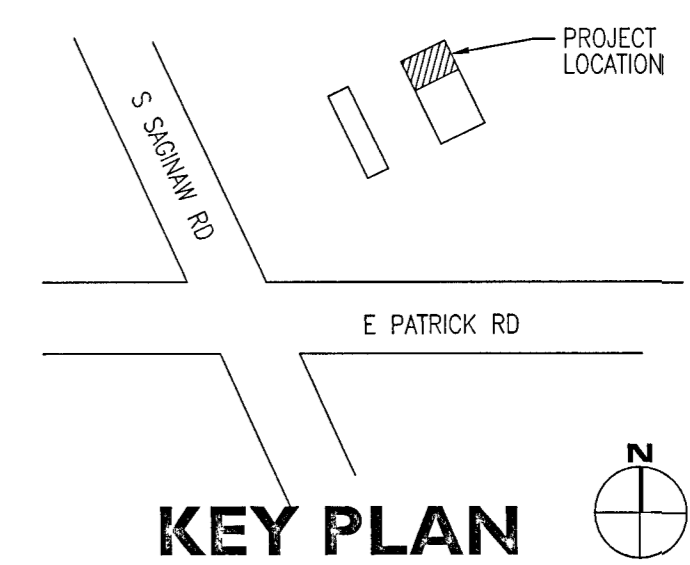
- STANDARD CEILING:
TILE: SEE INTERIOR DECOR DWGS.
GRID: SEE INTERIOR DECOR DWGS.
- WASHABLE CEILING:
TILE: WASHABLE SURFACED TILE,
SEE INTERIOR DECOR DWGS.
GRID: SEE INTERIOR DECOR DWGS.
- NEW SUSPENDED CANOPY. SEE
CANOPY DETAILS ON SHEET A5.1
- GYPSUM BOARD CEILING. SEE
INTERIOR DECOR PLANS FOR COLOR
- EXISTING EXTERIOR SOFFIT. PROVIDE
NEW PAINTED FINISH
- PVC SUPPLY DIFFUSER
MANUF: EGER (OR EQUIVALENT)
MODEL: EA3x (VERIFY NECK SIZE)
COLOR: MATCH CEILING COLOR
- PVC RETURN GRILLE
MANUF: EGER (OR EQUIVALENT)
MODEL: EARDx (VERIFY NECK SIZE)
COLOR: MATCH CEILING COLOR
- 2X4 FIXTURE - LED
MANUF: COLUMBIA LIGHTING
MODEL: LCAT24-35MLG-EDU
WATTAGE: 39 WATTS
- 2X4 FIXTURE - LED - WASHABLE LENS
MANUF: COLUMBIA LIGHTING
MODEL: LCAT24-35MLG-EDU
WATTAGE: 39 WATTS
- 1X4 FIXTURE - LED
MANUF: SECURITY LIGHTING
MODEL: L1T14-35LWG-FSA12-EDU-C388
WATTAGE: 27 WATTS
- 6" LED RECESSED CAN LIGHT
MANUF: JUNO
MODEL: SP34505-930-6-WWH
WATTAGE: 11 WATTS
- 6" LED RECESSED CAN LIGHT WALL WASH
MANUF: JUNO
MODEL: SP34506-27K-6WWH
WATTAGE: 11 WATTS
- 2" LED DOWN LIGHT
MANUF: JUNO
MODEL: SP343788-9-F1-SSN
WATTAGE: 10 WATTS
- PENDANT LIGHT
MANUF: HERMITAGE
MODEL: H-HBCWS42C 29-FRENCH GREEN
93 WHITE - GUARD
FROSTED GLASS
WATTAGE: 100 WATTS
- CANOPY LIGHT - WET LISTED LED
MANUF: LSI
MODEL: XSL2-S-50-CW-120-WHT-CMT
WATTAGE: 42 WATTS
- INTERIOR EGRESS LIGHT
MANUF: LSI
MODEL: LTEM-WH
W/ 90 MIN. BATTERY BACKUP
WATTAGE: 2 WATTS
- COMBO EXIT/EGRESS LIGHT
SECURITY LIGHTING SYSTEMS #CCRRC,
WALL MOUNTED EXIT LIGHT W/ 90
MIN. BACKUP. EQUAL TO NAVLITE
NXP30WH. 4 WATT TOTAL LED LAMPS.
- EXTERIOR EGRESS LIGHT - REMOTE HEAD
MANUF: LSI
MODEL: LUVR-WH
W/ 90 MIN. BATTERY BACKUP
WATTAGE: 3.6 WATTS
- EXTERIOR WALL LIGHT
MANUF: LSI
MODEL: XPWS3-FT-LED-48-450-CW-UE-MSV
WATTAGE: 72 WATTS

CEILING NOTES

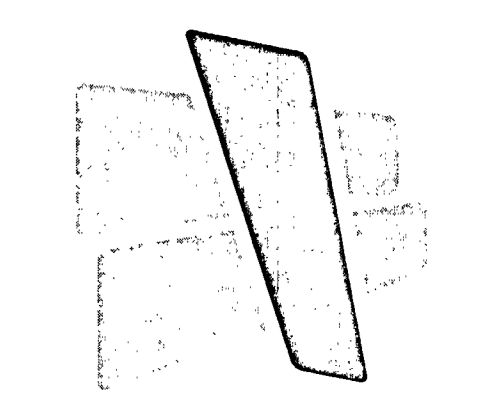
- C.1 DINING ROOM AND SERVING AREA: PROVIDE NEW GRID, TILES, LIGHT FIXTURES, SUPPLY DIFFUSERS AND RETURN GRILLES TO MATCH EXISTING QUANTITIES AND IN EXISTING LOCATIONS AS SHOWN. VERIFY IN FIELD. SEE DECOR DRAWINGS FOR PENDANT LIGHT LOCATIONS.
- C.2 PENDANT LIGHTS WIRED TO EXISTING CIRCUITS. SEE DECOR PLANS FOR FIXTURE SELECTIONS.
- C.3 EXISTING BULKHEAD TO REMAIN.
- C.4 NEW GYPSUM BOARD BULKHEAD, REFER TO DETAIL THIS SHEET.
- C.5 REINSTALL EXISTING DIGITAL MENUBOARD AFTER INSTALLATION OF NEW FINISHES. REFER TO INTERIOR DECOR DRAWINGS FOR NEW FINISHES. PROVIDE STAINLESS STEEL WRAP ALONG BOTTOM OF MENUBOARD BULKHEAD. REFER TO DETAIL ON A51.1g.
- C.6 NEW CEILING DECOR ELEMENT, SEE DECOR PLANS FOR HEIGHTS, SIZES AND FINISHES LIGHT SELECTIONS.
- C.7 NEW CANOPY SYSTEM PROVIDED AND INSTALLED BY VENDOR. COORDINATE WITH VENDOR DRAWINGS.

ELECTRICAL NOTES

1. REPLACE ALL EMERGENCY LIGHT FIXTURES THROUGHOUT THE FACILITY. ELECTRICAL CONTRACTOR TO ENSURE FUNCTIONALITY OF ALL EXISTING AND NEW EXIT SIGNS AND LIGHTS.
2. NO NEW CIRCUITS WILL BE RUN TO THE ELECTRICAL PANELS. NO WORK TO OCCUR IN EXISTING ELECTRICAL PANELS.
3. ALL NEW ELECTRICAL RECEPTACLES IN THE DINING ROOM SHALL BE WIRED TO EXISTING CIRCUITS AS SHOWN.
4. ALL NEW WIRING SHALL USE EMT OR RIGID CONDUIT.
5. ALL WORK TO BE PERFORMED BY LICENSED ELECTRICAL CONTRACTOR IN ACCORDANCE WITH NEC 300.1.
6. ALL EXTERIOR SIGNAGE AND LIGHTING SHALL BE CONTROLLED BY NEW YORK EW2-103 DIGITAL TIME SWITCH.



KEY PLAN

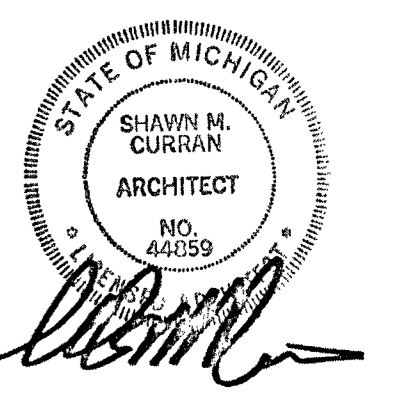


CURRAN
ARCHITECTURE

5719 LAWTON LOOP E. DR. #212
INDIANAPOLIS, IN 46216
O :: 317.288.0681
F :: 317.288.0753

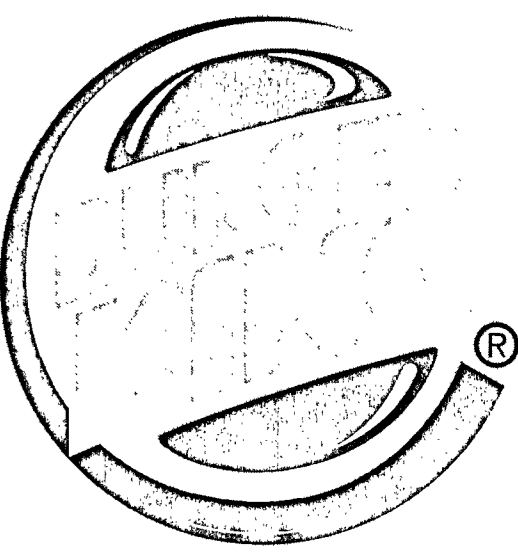


2100 RIVEREDGE PARKWAY
SUITE 850
ATLANTA, GA 30328
O :: 770.933.5023
F :: 770.933.5024



THIS DRAWING AND THE IDEAS, DESIGNS AND CONCEPTS CONTAINED HEREIN ARE THE EXCLUSIVE INTELLECTUAL PROPERTY OF CURRAN ARCHITECTURE, AND ARE NOT TO BE USED OR REPRODUCED, WHOLE OR IN PART, WITHOUT THE WRITTEN CONSENT OF CURRAN ARCHITECTURE. © COPYRIGHT 2021, CURRAN ARCHITECTURE

REMODEL TO:
BURGER KING #13694
2029 S. SAGINAW RD.
MIDLAND, MI 48640



FOR CONSTRUCTION 06-25-2021

PROJECT NUMBER: 190379

CEILING PLAN

A1.2