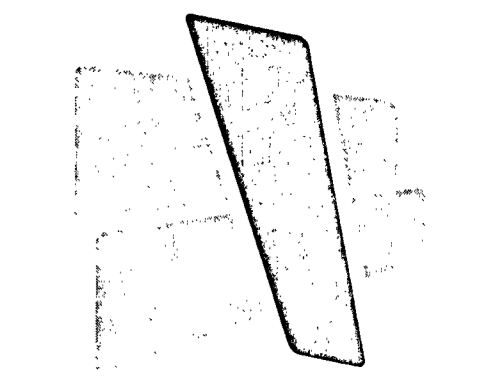


DEMO KEY NOTES

- D.1 REMOVE EXISTING STOREFRONT DOOR AND HARDWARE. PREP EXISTING FRAME TO RECEIVE NEW DOOR AND HARDWARE.
- D.2 REMOVE EXISTING HOLLOW METAL DOOR AND FRAME. PREP OPENING FOR NEW DOOR AND FRAME.
- D.3 REMOVE EXISTING MANSARD ROOF SYSTEM TO EXTENTS SHOWN.
- D.4 REMOVE CMU BLOCK IN THIS AREA. SEE WALL SECTIONS.
- D.5 REMOVE EXISTING BUILDING SIGNAGE. RETAIN FOR REUSE.
- D.6 REMOVE EXISTING LIGHTED BAND ASSEMBLY AS SHOWN.
- D.7 REMOVE EXISTING ALUMINUM STOREFRONT WINDOW GLAZING PANEL AND FRAMING AT THIS OPENING ONLY. PREP OPENING FOR WALL INFILL.
- D.8 REMOVE EXISTING DRIVE-THRU WINDOWS. PREP OPENING FOR NEW SLIDING DRIVE-THRU WINDOWS. REMOVE EXISTING BOLLARDS.
- D.9 REMOVE EXISTING ALUMINUM COPING TO EXTENTS SHOWN. PREP FOR NEW COPING AS SHOWN ON ELEVATIONS.
- D.10 EXISTING CMU BLOCK TO REMAIN, PREP SURFACE TO RECEIVE NEW PAINTED FINISH.
- D.11 REMOVE PORTION OF EXISTING WALL FOR NEW WINDOW. PROVIDE TEMPORARY BRACING AND LINTEL AS REQUIRED.
- D.12 PREPARE EXISTING EIFS TO RECEIVE NEW FINISH. REMOVE WINDOW SURROUND, REFER TO NEW ELEVATIONS FOR EIFS PATTERNS AND COLORS.

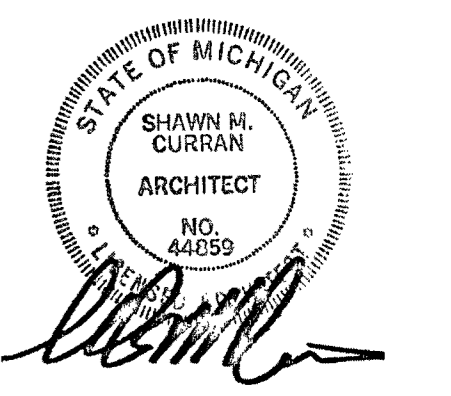


CURRAN
ARCHITECTURE

5719 LAWTON LOOP E. DR. #212
INDIANAPOLIS, IN 46216
O :: 317.288.0681
F :: 317.288.0753

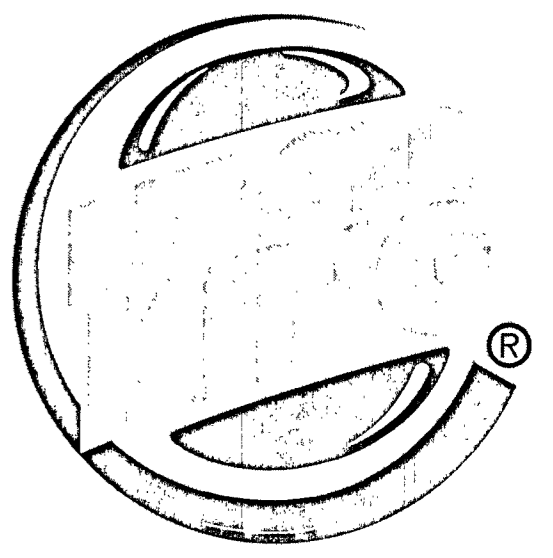


2100 RIVEREDGE PARKWAY
SUITE 850
ATLANTA, GA 30328
O :: 770.933.5023
F :: 770.933.5024



THIS DRAWING AND THE IDEAS, DESIGNS AND CONCEPTS CONTAINED HEREIN ARE THE EXCLUSIVE INTELLECTUAL PROPERTY OF CURRAN ARCHITECTURE AND ARE NOT TO BE USED OR REPRODUCED, WHOLE OR IN PART, WITHOUT THE WRITTEN CONSENT OF CURRAN ARCHITECTURE. © COPYRIGHT 2021, CURRAN ARCHITECTURE

REMODEL TO:
BURGER KING #13694
2029 S. SAGINAW RD.
MIDLAND, MI 48640

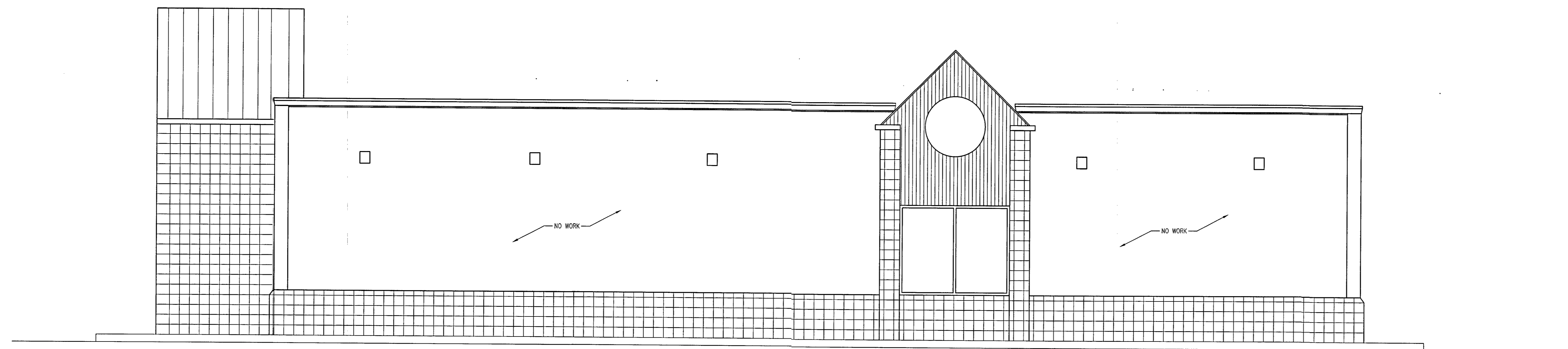


FOR CONSTRUCTION 06-25-2021

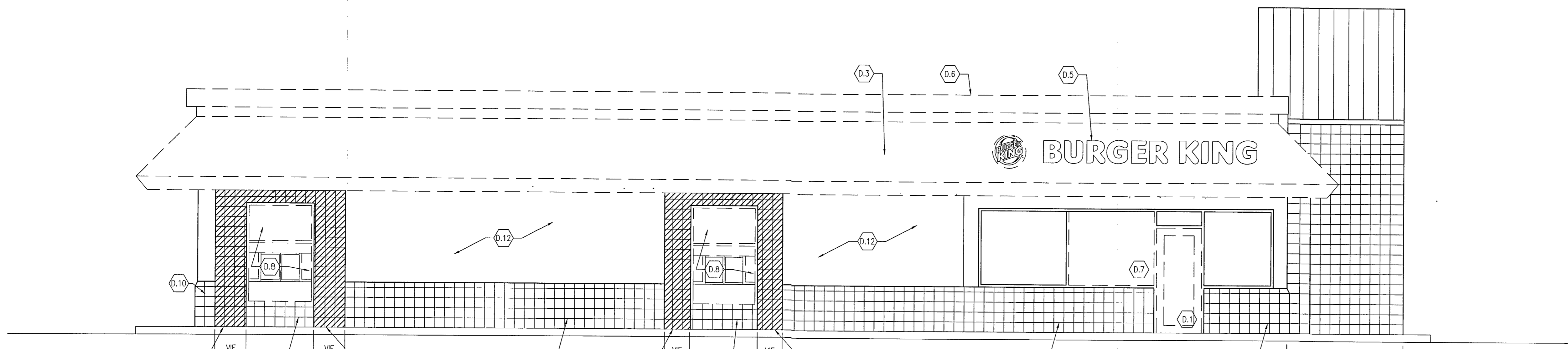
PROJECT NUMBER: 190379

DEMOLITION
ELEVATIONS

A2.1



ELEVATION 1
1/4" = 1'-0"



ELEVATION 2
1/4" = 1'-0"