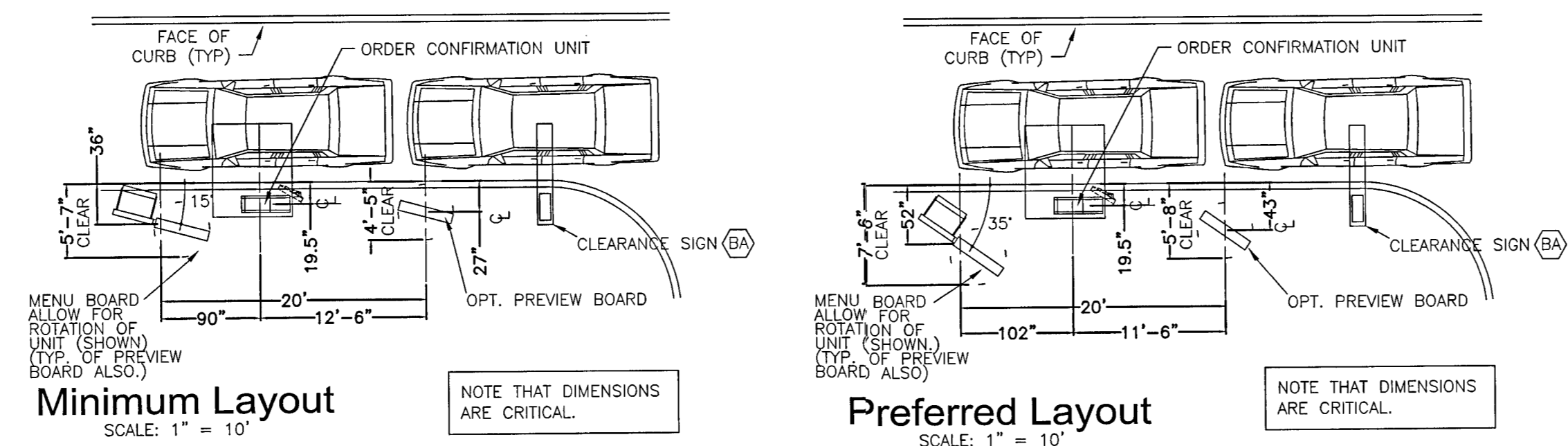
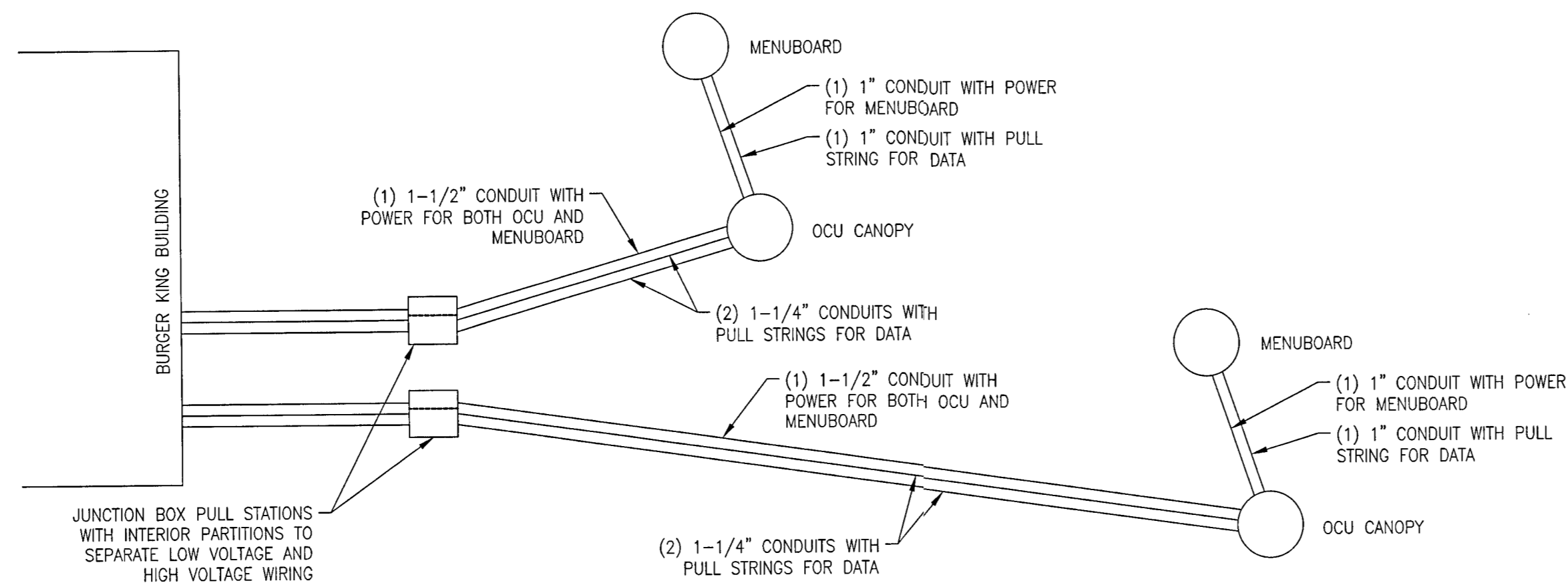


**TYPICAL RAMP DETAIL** 4  
 NOT TO SCALE

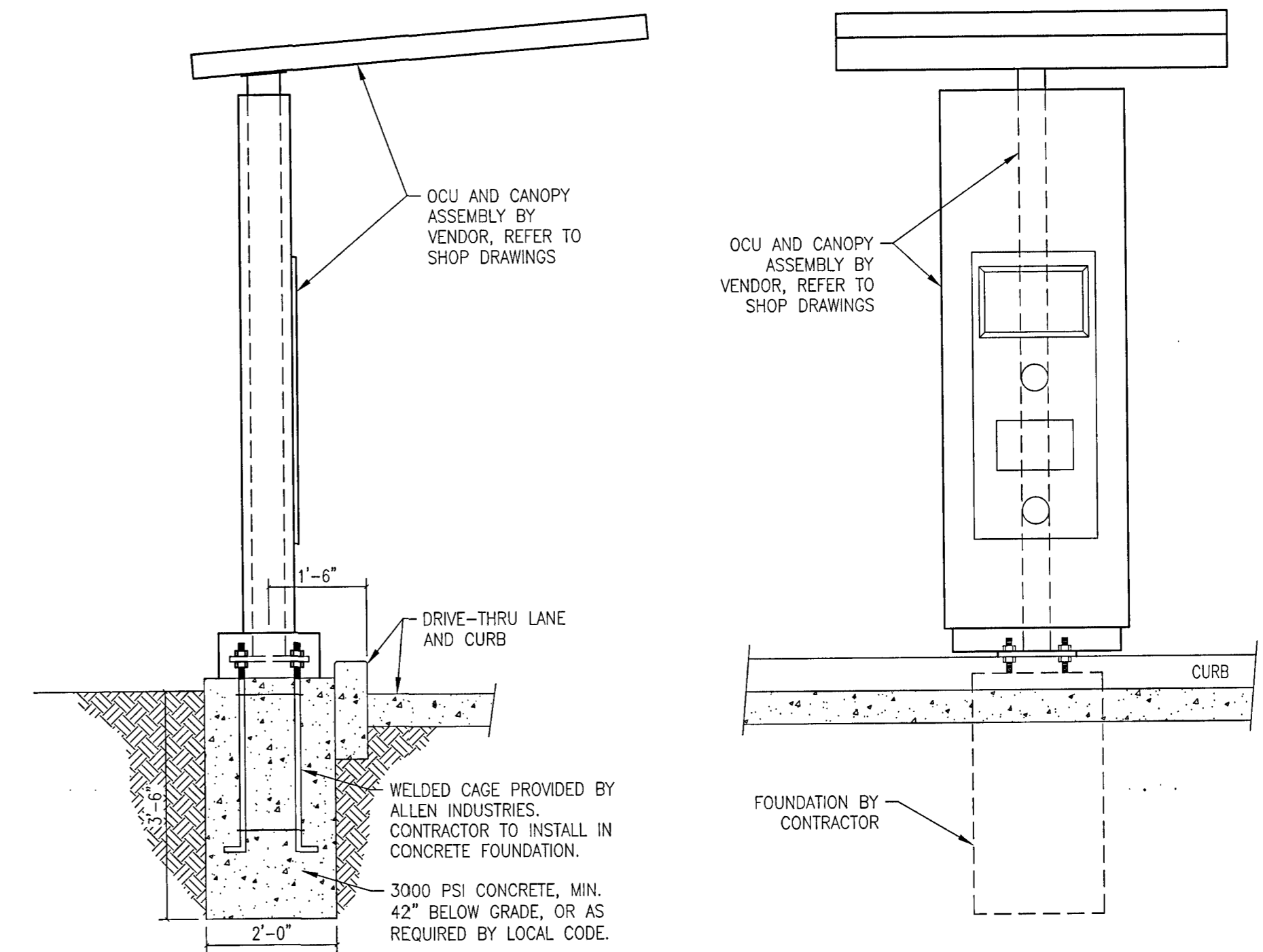
NOTE: THE PREFERRED LAYOUT SHOULD BE USED WHENEVER SPACE ALLOWS. ANGLES BETWEEN THE PREFERRED LAYOUT AND MINIMUM LAYOUT ARE ACCEPTABLE AS LONG AS:  
 (1) THE DISTANCES FROM THE CENTERLINES OF THE SUPPORT POLES OF THE MENU BOARD AND PREVIEW BOARD TO THE FACE OF CURB ARE REDUCED BY 4" FOR EVERY 5 DEGREES OF ROTATION, AND  
 (2) THE DISTANCE FROM THE CENTERLINE OF THE ORDER CONFIRMATION UNIT AND THE CENTERLINE OF THE MENU BOARD IS REDUCED BY 3" FOR EVERY 5 DEGREES OF ROTATION.  
 THE CENTERLINE OF MENU BOARD TO CENTERLINE OF PREVIEW BOARD REMAINS AT 20".



**TYPICAL D/T EQUIPMENT LAYOUT** 5  
 NOT TO SCALE

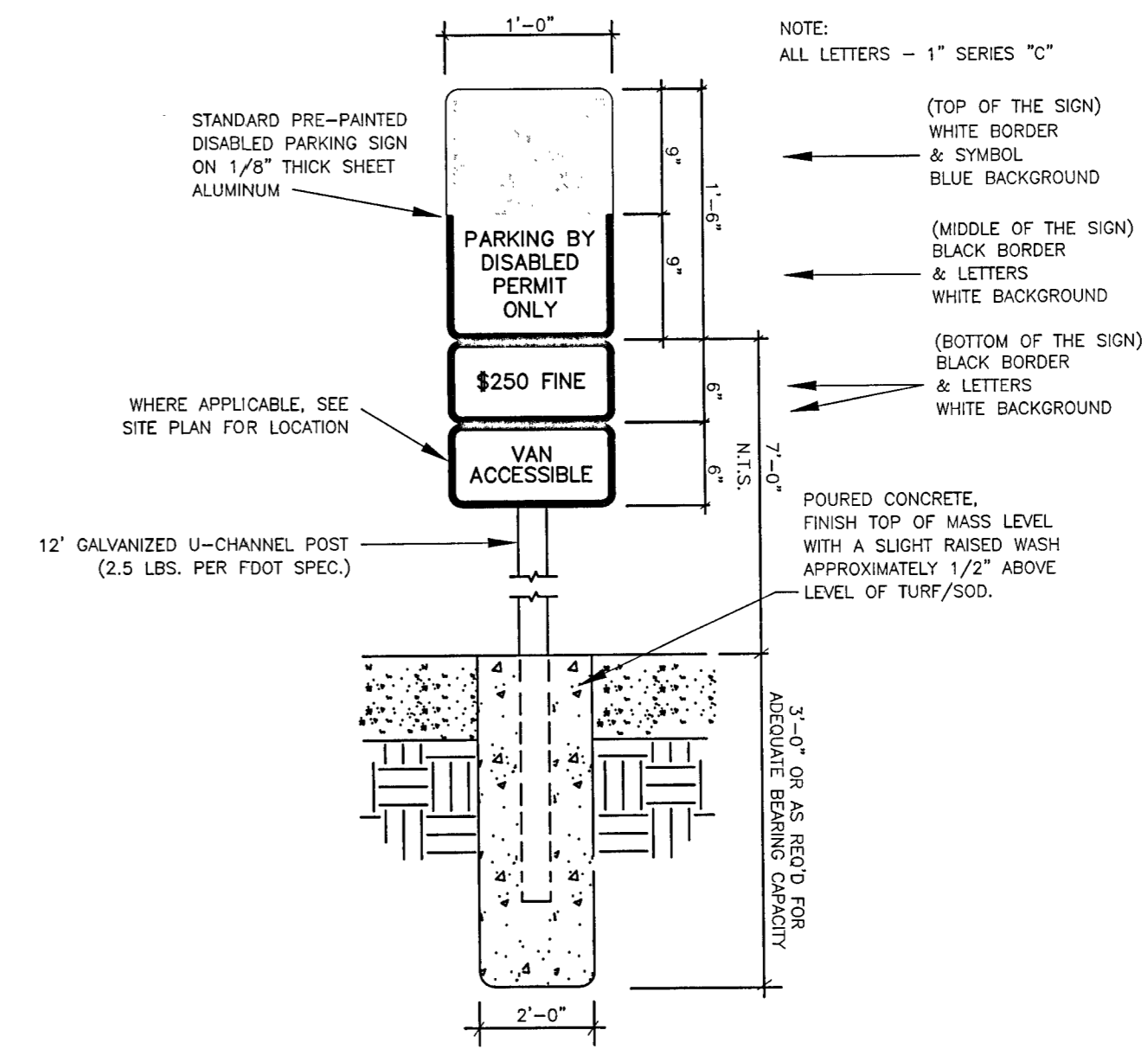


**TYPICAL D/T POWER & DATA SCHEMATIC** 6  
 NOT TO SCALE

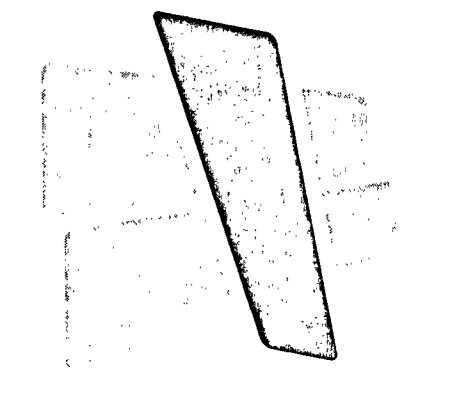
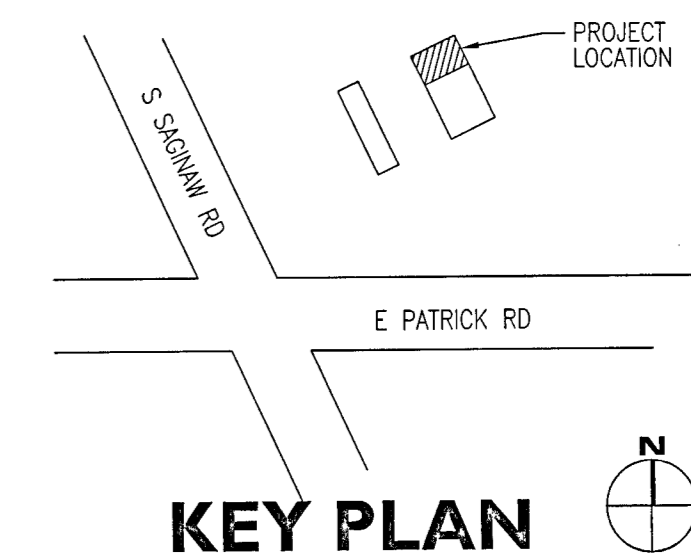


**OCU FOUNDATION DETAIL** 1  
 1/2" = 1'-0"

**OCU FRONT ELEVATION** 2  
 1/2" = 1'-0"



**ACCESSIBLE PARKING SIGN** 3  
 NOT TO SCALE

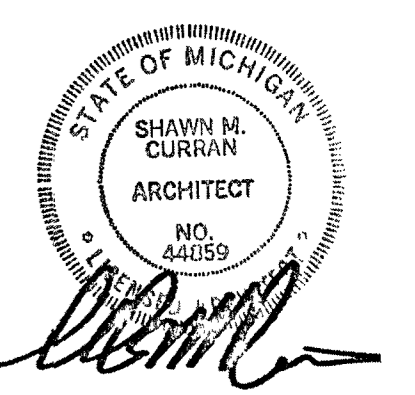


**CURRAN**  
 ARCHITECTURE

5719 LAWTON LOOP E. DR. #212  
 INDIANAPOLIS, IN 46216  
 O :: 317.288.0681  
 F :: 317.288.0753

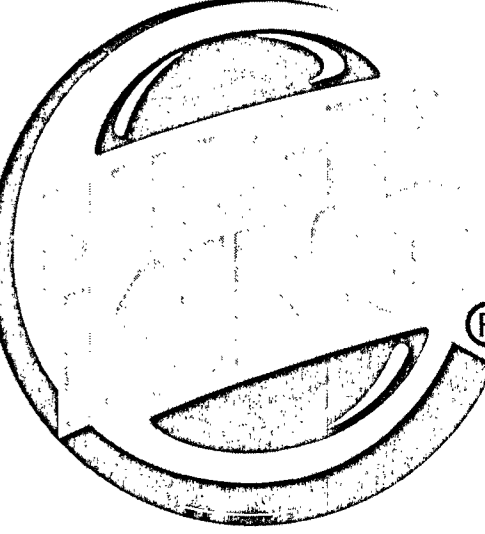


2100 RIVEREDGE PARKWAY  
 SUITE 850  
 ATLANTA, GA 30328  
 O :: 770.933.5023  
 F :: 770.933.5024



THIS DRAWING AND THE IDEAS, DESIGNS AND CONCEPTS CONTAINED HEREIN ARE THE EXCLUSIVE INTELLECTUAL PROPERTY OF CURRAN ARCHITECTURE AND ARE NOT TO BE USED OR REPRODUCED, WHOLE OR IN PART, WITHOUT THE WRITTEN CONSENT OF CURRAN ARCHITECTURE. © COPYRIGHT 2021, CURRAN ARCHITECTURE

REMODEL TO:  
 BURGER KING #13694  
 2029 S. SAGINAW RD.  
 MIDLAND, MI 48640



FOR CONSTRUCTION 06-25-2021

PROJECT NUMBER: 190379

SITE DETAILS

ASI.2