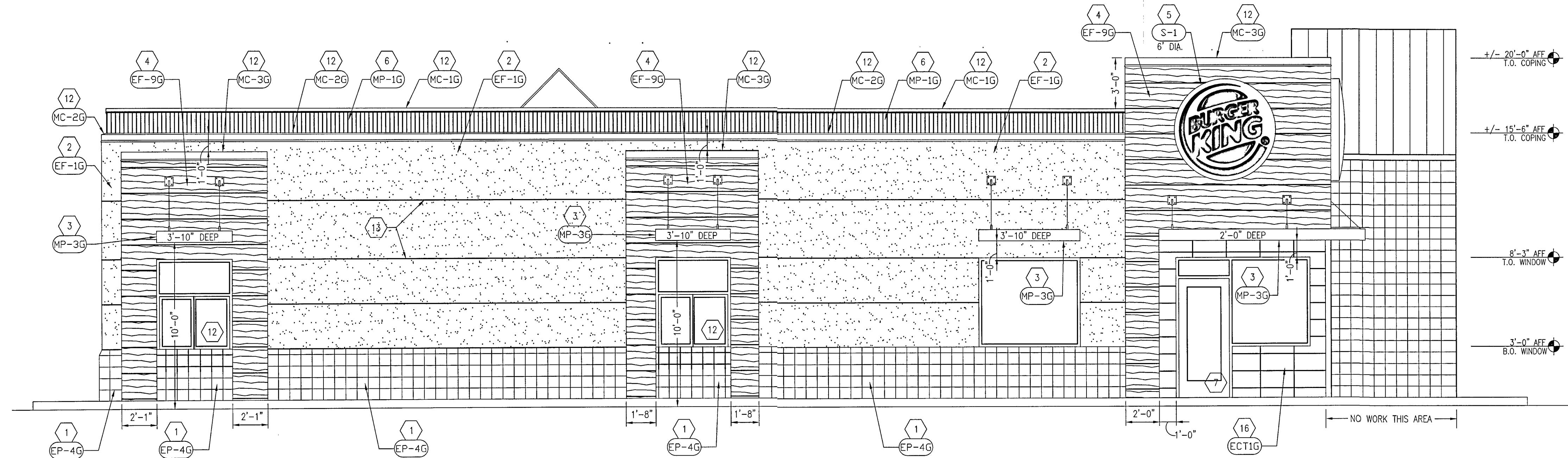
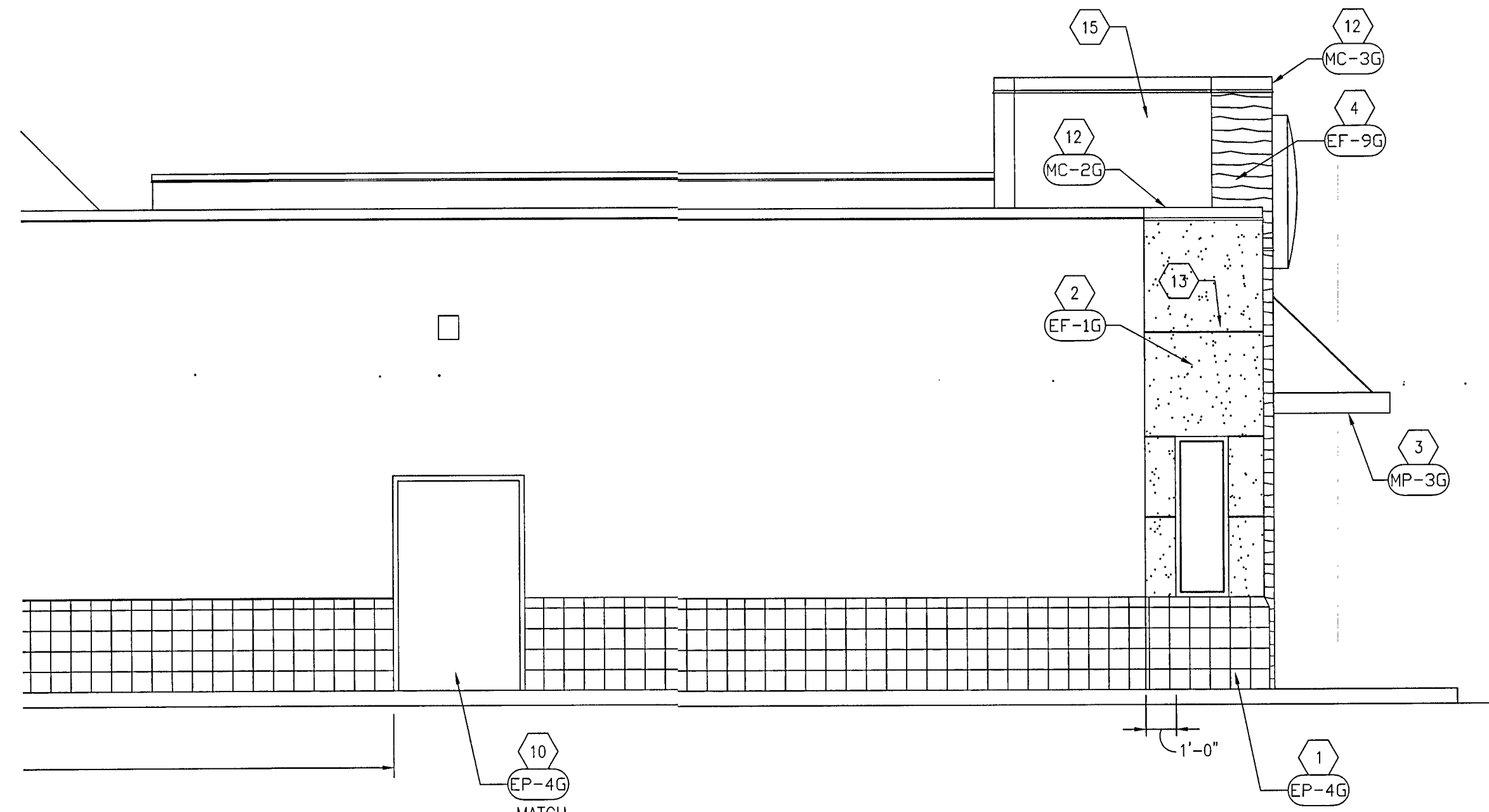


**ELEVATION 1**  
1/4" = 1'-0"



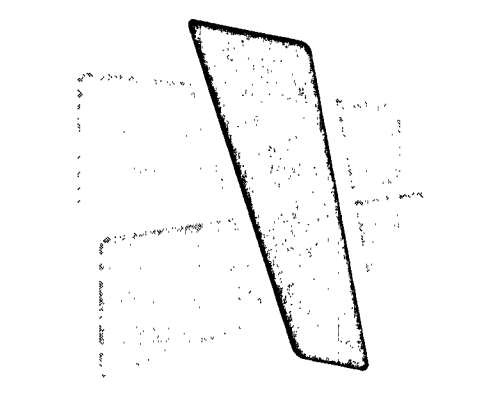
**ELEVATION 2**  
1/4" = 1'-0"



**ELEVATION 3**  
1/4" = 1'-0"

**KEY NOTES**

- 1 PAINT EXISTING CMU COLOR AS SHOWN.
- 2 EIFS FINISH OVER NEW OR EXISTING EXTERIOR WALL SYSTEM. PROVIDE NEW FRAMING/SHEATHING AS REQ'D.
- 3 SUSPENDED CANOPY ABOVE WINDOWS, COORDINATE LOCATION OF WOOD BLOCKING FOR CANOPY BRACING WITH CANOPY MANUF. AND DETAILS ON SHEET A5.1.
- 4 NEW NICHHA FIBER CEMENT SIDING PANEL SYSTEM ON NEW TOWER FRAMING.
- 5 NEW SIGNAGE, COORDINATE POWER REQUIREMENTS.
- 6 NEW LED LIGHTED BAND ASSEMBLY WIRED INTO EXISTING LIGHTING CIRCUITS.
- 7 NEW STOREFRONT DOOR AND HARDWARE, REFER TO DOOR SCHEDULE.
- 8 NEW EXTERIOR LIGHT FIXTURE WIRED INTO EXISTING EXTERIOR LIGHTING CIRCUIT, BOT. OF FIXTURE @ 10'-0" AFF, TYPICAL.
- 9 NEW ALUMINUM STOREFRONT WINDOW SYSTEM, GLAZING AND FINISHES TO MATCH EXISTING.
- 10 NEW HOLLOW METAL DOOR AND FRAME, PAINT AS SHOWN.
- 11 SUSPENDED CANOPY WITH "FLAME GRILLING SINCE 1954" SIGN. SIGN IS FRONT LIT WITH LED STRIP FIXTURE, SEE DETAIL. COORDINATE POWER REQUIREMENTS.
- 12 NEW WALL COPING.
- 13 HORIZONTAL REVEAL IN EIFS.
- 14 EXISTING SLIDING DRIVE THRU WINDOW.
- 15 BACK SIDE OF TOWERS TO BE FINISHED WITH NICHHA FIBER CEMENT PANELS, EF-9G.
- 16 NEW CERAMIC TILE FINISH WHERE CMU AND EIFS FINISH HAVE BEEN REMOVED.

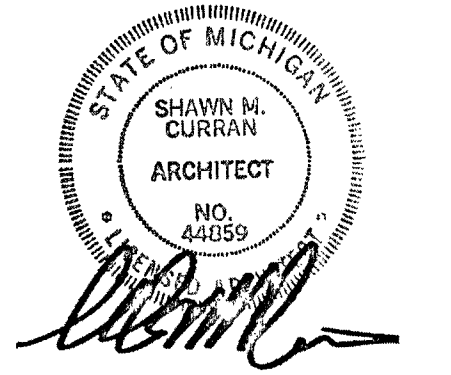


**CURRAN**  
ARCHITECTURE

5719 LAWTON LOOP E. DR. #212  
INDIANAPOLIS, IN 46216  
O :: 317.288.0681  
F :: 317.288.0753

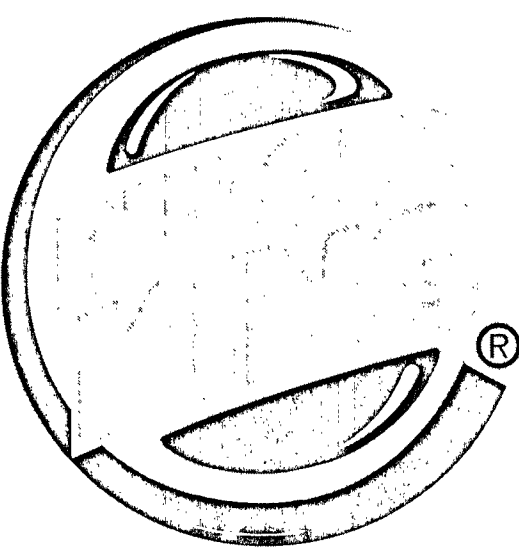


2100 RIVEREDGE PARKWAY  
SUITE 850  
ATLANTA, GA 30328  
O :: 770.933.5023  
F :: 770.933.5024



THIS DRAWING AND THE IDEAS, DESIGNS AND CONCEPTS CONTAINED HEREIN ARE THE EXCLUSIVE INTELLECTUAL PROPERTY OF CURRAN ARCHITECTURE, AND ARE NOT TO BE USED OR REPRODUCED, WHOLE OR IN PART, WITHOUT THE WRITTEN CONSENT OF CURRAN ARCHITECTURE. © COPYRIGHT 2021, CURRAN ARCHITECTURE

REMODEL TO:  
BURGER KING #13694  
2029 S. SAGINAW RD.  
MIDLAND, MI 48640



FOR CONSTRUCTION 06-25-2021

\_\_\_\_\_

\_\_\_\_\_

\_\_\_\_\_

\_\_\_\_\_

\_\_\_\_\_

\_\_\_\_\_

\_\_\_\_\_

\_\_\_\_\_

\_\_\_\_\_

\_\_\_\_\_

PROJECT NUMBER: 190379

NEW ELEVATIONS

**A2.3**