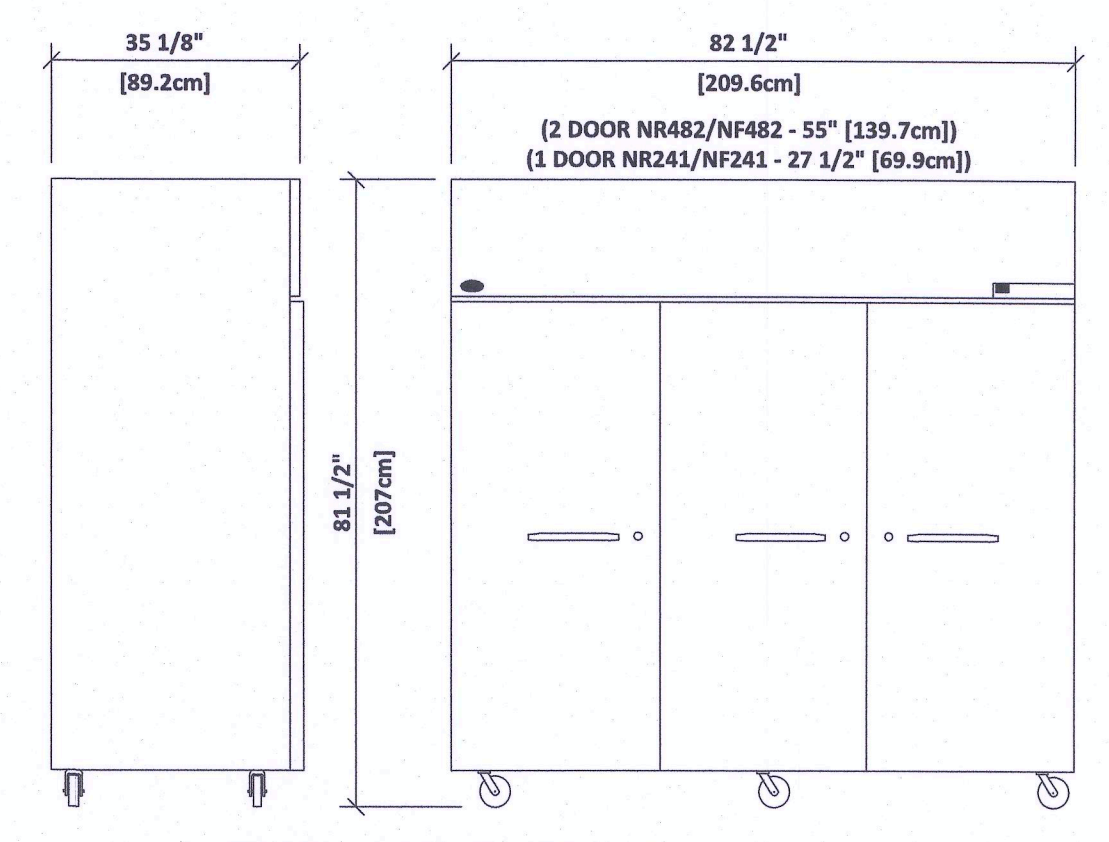


NOTE: KLB = REFRIGERATOR, KLF = FREEZER. MODEL KLF66 OR KLC66 SHOWN ABOVE. MODEL KLB683 OR KLF683 (STD, 77 & 78) SHOWN ABOVE.

MODEL #	A	B	C	D	E	F	G	INTERIOR CU. FT.	VOLTS/HZ/PH	MINIMUM CIRCUT AMPS	TOTAL SYSTEM AMPS	MAXIMUM FUSE SIZE
KLB66-CX-SUB	6"	6"	26"	66"	37"	48 1/4"	14 7/8"	168	208-230/60/1	10.5	8.7	15
KLB68-CX-SUB	8"	6"	26"	66"	37"	48 1/4"	14 7/8"	231	208-230/60/1	11.9	10	15
KLB683-CX-SUB	6"	8"	26"	66"	37"	48 1/4"	14 7/8"	231	208-230/60/1	11.9	10	15
KLB7466-CX-SUB	6"	6"	26"	78"	37"	48 1/4"	14 7/8"	196	208-230/60/1	11.9	10	15
KLB7468-CX-SUB	8"	6"	26"	78"	37"	48 1/4"	14 7/8"	270	208-230/60/1	11.9	10	15
KLB74683-CX-SUB	6"	8"	26"	78"	37"	48 1/4"	14 7/8"	270	208-230/60/1	11.9	10	15
KLB7766-CX-SUB	6"	6"	26"	78"	37"	48 1/4"	14 7/8"	196	208-230/60/1	10.5	8.7	15
KLB7768-CX-SUB *	8"	6"	26"	78"	37"	48 1/4"	14 7/8"	270	208-230/60/1	11.9	8.7	15
KLB77683-CX-SUB *	6"	8"	26"	78"	37"	48 1/4"	14 7/8"	270	208-230/60/1	11.9	8.7	15
KLF66-CX*	6"	6"	26"	66"	39"	48 1/4"	14 7/8"	168	208-230/60/1	13.4	8.2	15
KLF68-CX*	8"	6"	26"	66"	39"	48 1/4"	14 7/8"	231	208-230/60/1	10.8	9.1	15
KLF683-CX	6"	8"	26"	66"	39"	48 1/4"	14 7/8"	231	208-230/60/1	10.8	9.1	15
KLF7766-CX	6"	6"	26"	78"	39"	48 1/4"	14 7/8"	196	208-230/60/1	13.4	8.2	15
KLF7768-CX	8"	6"	26"	78"	39"	48 1/4"	14 7/8"	270	208-230/60/1	10.8	9.1	15
KLF77683-CX	6"	8"	26"	78"	39"	48 1/4"	14 7/8"	270	208-230/60/1	10.8	9.1	15
KLF7866-CX	6"	6"	26"	78"	39"	48 1/4"	14 7/8"	184	208-230/60/1	13.4	8.2	15
KLF7868-CX	8"	6"	26"	78"	39"	48 1/4"	14 7/8"	256	208-230/60/1	10.8	9.1	15
KLF78683-CX	6"	8"	26"	78"	39"	48 1/4"	14 7/8"	256	208-230/60/1	10.8	9.1	15

NOTE: EACH DOOR SECTIONS REQUIRES SEPARATE 115/60/1 HOOK UP AND DRAWS 2.3 AMPS.
 *THESE SYSTEMS HAVE FAN MOTORS THAT REQUIRE SEPARATE 115/60/1 HOOK UP AND DRAW .75 AMPS. ABOVE SPECIFICATIONS FOR CEILING MOUNT SYSTEMS AND INDOOR USE ONLY.
 WALL MOUNT AND REMOTE COMPRESSORS AVAILABLE. SEE MANUFACTURER FOR DETAILS.
 ALL TO BE DIRECT WIRED.
 NSF APPROVED. UL LISTING #E-486142 (REPORT #48). E.T.L. APPROVED. CSA FILE 18542-24.
 MANUFACTURER CLEARANCE SPECIFICATIONS:
 DO NOT STORE BOXES ON THE TOP OF COOLER OR FREEZER. STORED OBJECTS WILL OBSTRUCT AIR FLOW AND CAUSE VENTILATION PROBLEMS FOR THE REFRIGERATION SYSTEMS.
 24" CLEARANCE IS RECOMMENDED FROM TOP OF ROOF MOUNTED CAPSULE PAK REFRIGERATION SYSTEM TO CEILING FOR SERVICE PURPOSES (6" MINIMUM).
 OPENING WITH GRILL OR LOUVERS (MIN. SIZE 15" H X 26" W) IN HEADER WALL RECOMMENDED FOR VENTILATION OF ROOF MOUNTED COMPRESSOR.
 12" CLEARANCE IS RECOMMENDED ON BOTH SIDES OF THE WALL MOUNTED CAPSULE PAK FOR PROPER AIR FLOW.

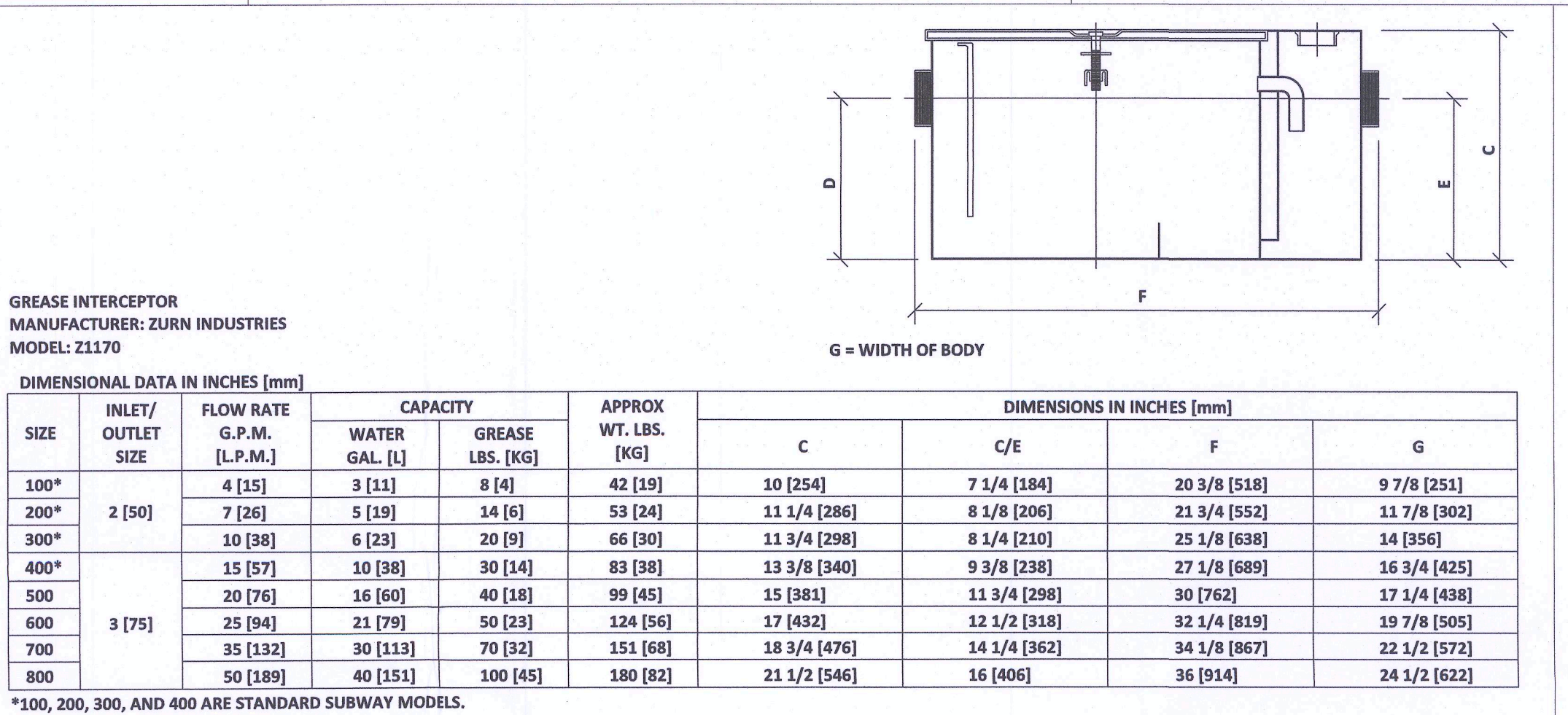


MODEL NR803SS5/0 OR NF803SS5/0 SHOWN

MODEL #	VOLTS/HZ/PH	AMPS.	INTERIOR CU. FT.
NR241SS5/0	115/60/1	8.6	22.5
NR522SS5/0	115/60/1	10.7	48.8
NR803SS5/0	115/60/1	10.4	75.0
NF241SS5/0	115/60/1	12	22.5
NF522SS5/0	115/60/1	12.4	48.8
*NF803SS5/0	115/60/1	15	75.0

*20 AMP FUSE IS REQUIRED.

NORLAKE REFRIGERATOR/FREEZER

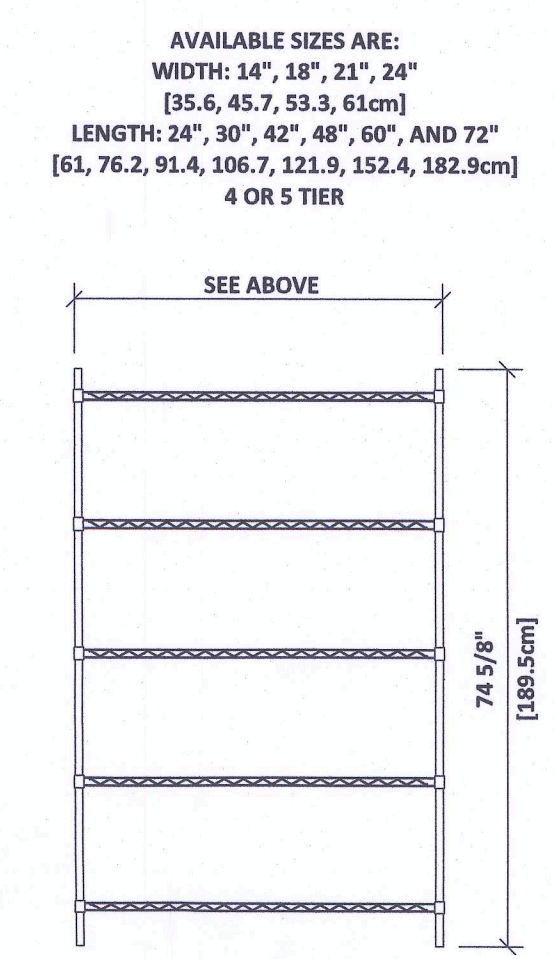


ZURN GREASE INTERCEPTOR

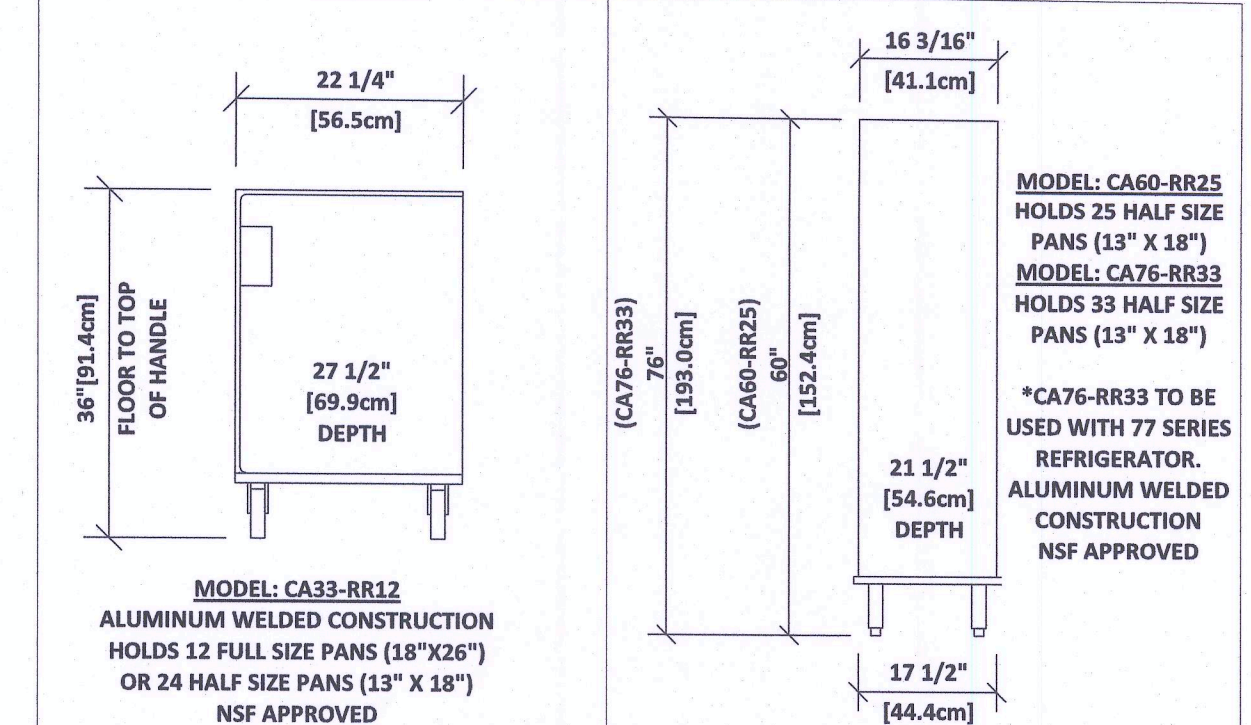
GREASE INTERCEPTOR MANUFACTURER: ZURN INDUSTRIES MODEL: Z1170

SIZE	INLET/OUTLET SIZE	FLOW RATE G.P.M. [L.P.M.]	CAPACITY		APPROX. WT. LBS. [KG.]	DIMENSIONS IN INCHES [mm]			
			WATER GAL. [L]	GREASE LBS. [KG.]		C	C/E	F	G
100*	2 [50]	4 [15]	3 [11]	8 [4]	42 [19]	10 [254]	7 1/4 [184]	20 3/8 [518]	9 7/8 [251]
200*		7 [26]	5 [19]	14 [6]	53 [24]	11 1/4 [286]	8 1/8 [206]	21 3/4 [552]	11 7/8 [302]
300*		10 [38]	6 [23]	20 [9]	63 [30]	11 3/4 [298]	8 1/4 [210]	25 3/8 [638]	14 [356]
400*	3 [75]	15 [57]	10 [38]	30 [14]	83 [38]	13 3/8 [340]	9 3/8 [238]	27 1/8 [689]	16 3/4 [425]
500		20 [76]	16 [60]	40 [18]	99 [45]	15 [381]	11 3/4 [298]	30 [762]	17 1/4 [438]
600		25 [94]	21 [79]	50 [23]	124 [56]	17 [432]	12 1/2 [318]	32 1/4 [819]	19 7/8 [505]
700		35 [132]	30 [113]	70 [32]	151 [68]	18 3/4 [476]	14 1/4 [362]	34 1/8 [867]	22 1/2 [572]
800	50 [189]	40 [151]	100 [45]	180 [82]	21 1/2 [546]	16 [406]	36 [914]	24 1/2 [622]	

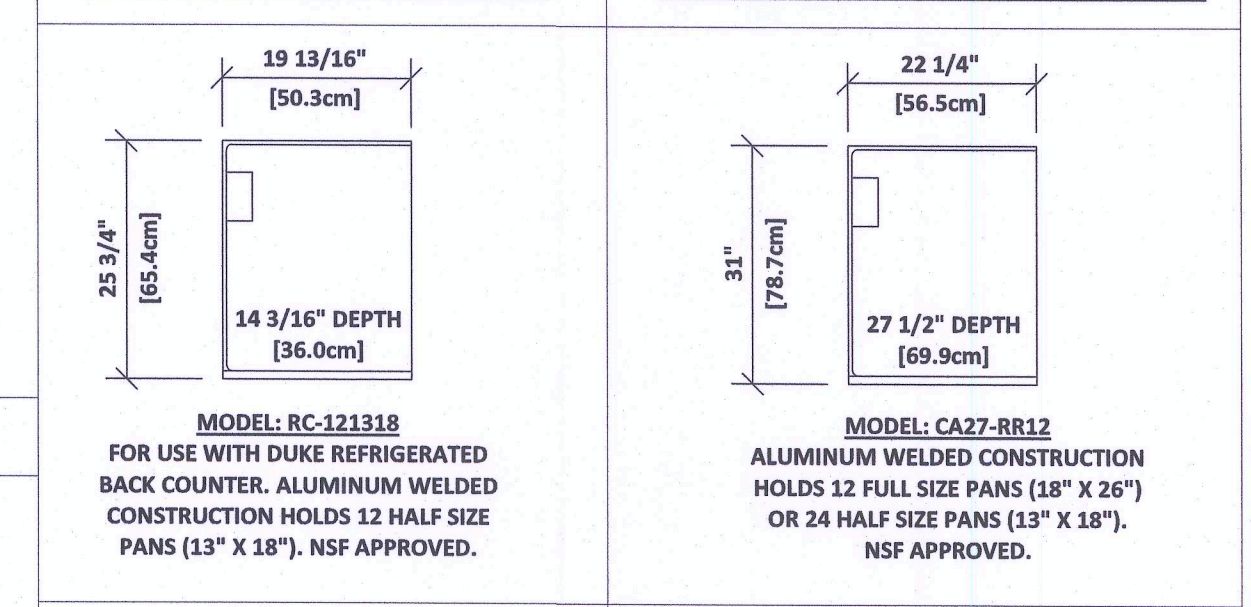
*100, 200, 300, AND 400 ARE STANDARD SUBWAY MODELS.
 ENGINEERING SPECIFICATIONS: ACID RESISTANT COATED INTERIOR AND EXTERIOR FABRICATED STEEL. INTERNAL AIR FLOW BYPASS. BRONZE CLEANOUT PLUG. REMOVABLE PRESSURE EQUALIZING/FLOW DIFFUSING INLET BAFFLE. FIXED BOTTOM OUTLET BAFFLE. VISIBLE DOUBLE WALL TRAP SEAL.



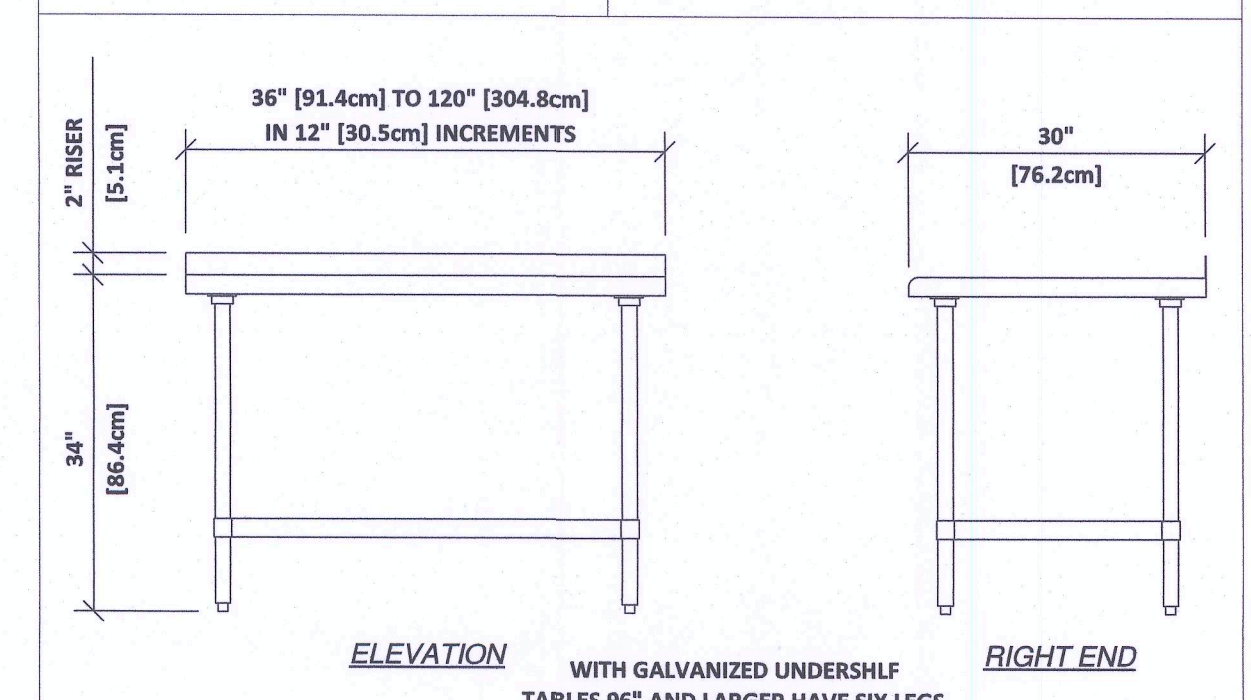
INTERMETRO SHELVING SYSTEMS



LOCKWOOD DECK RETARDER LOCKWOOD RETARDER CABINET



DUKE RETARDER CABINET LOCKWOOD REACH-IN RETARDER



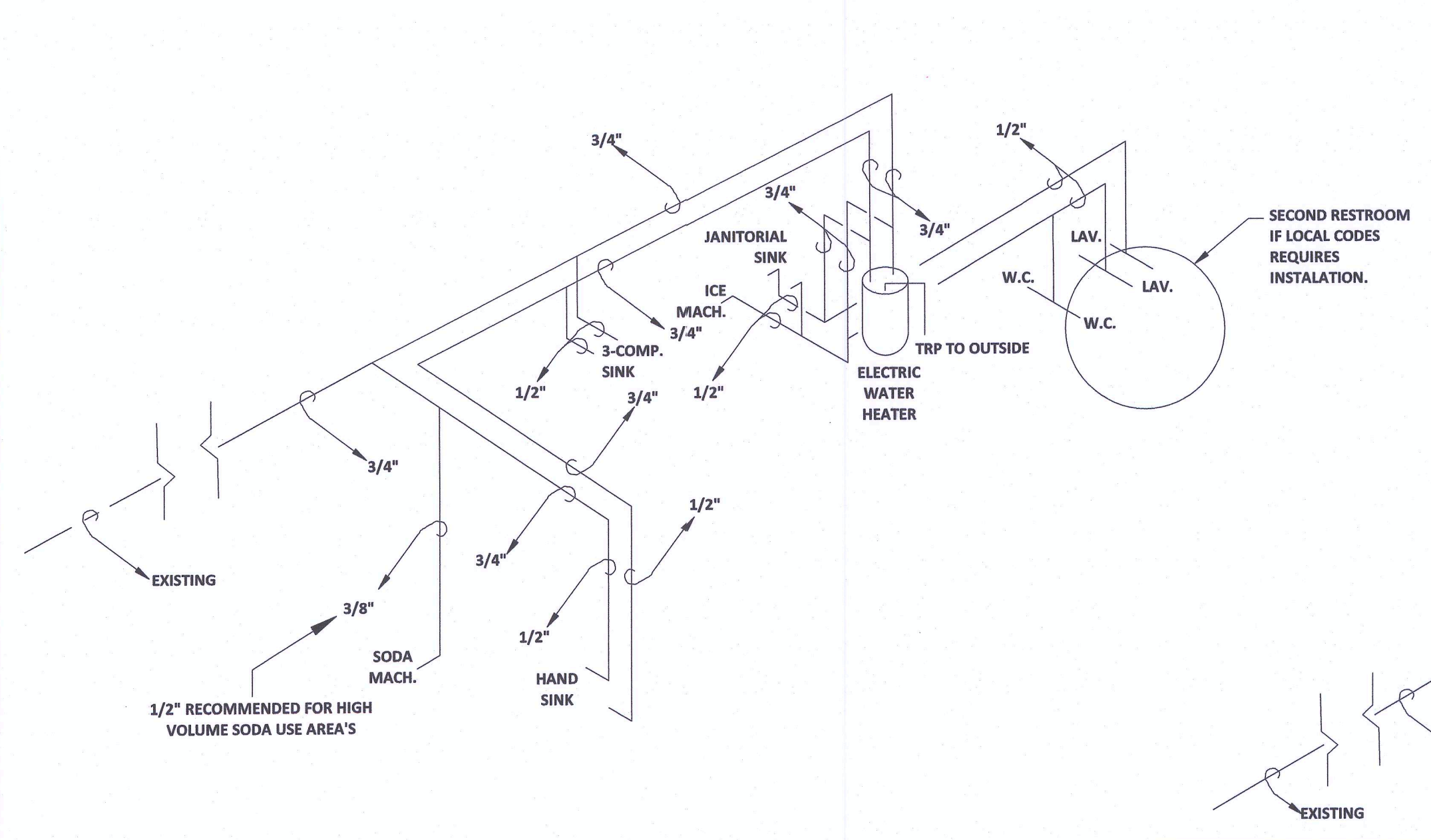
DUKE STAINLESS STEEL WORKTABLE

NORLAKE KOLD LOCKER SERIES REFRIGERATOR AND FREEZER

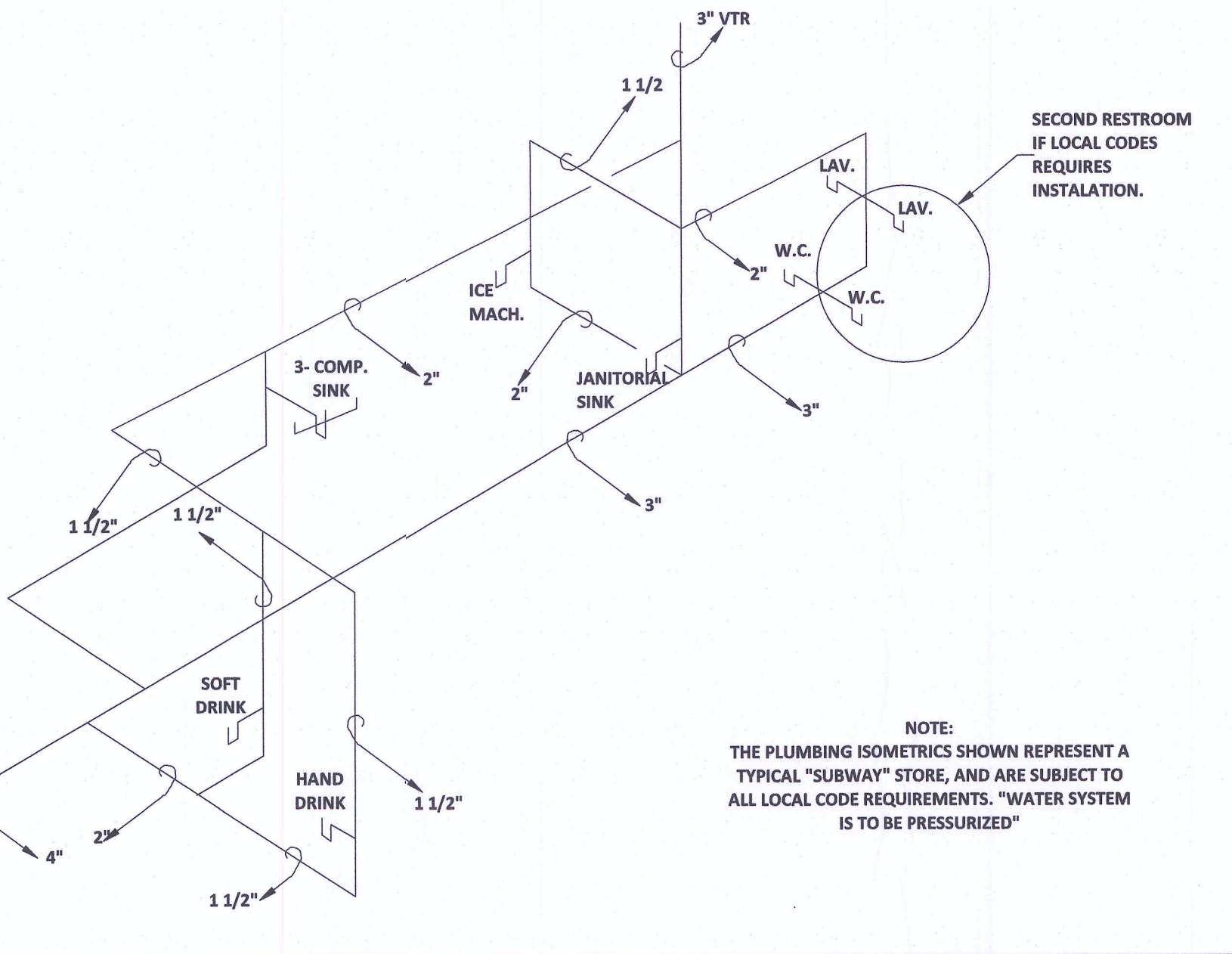
ZURN GREASE INTERCEPTOR

INTERMETRO SHELVING SYSTEMS

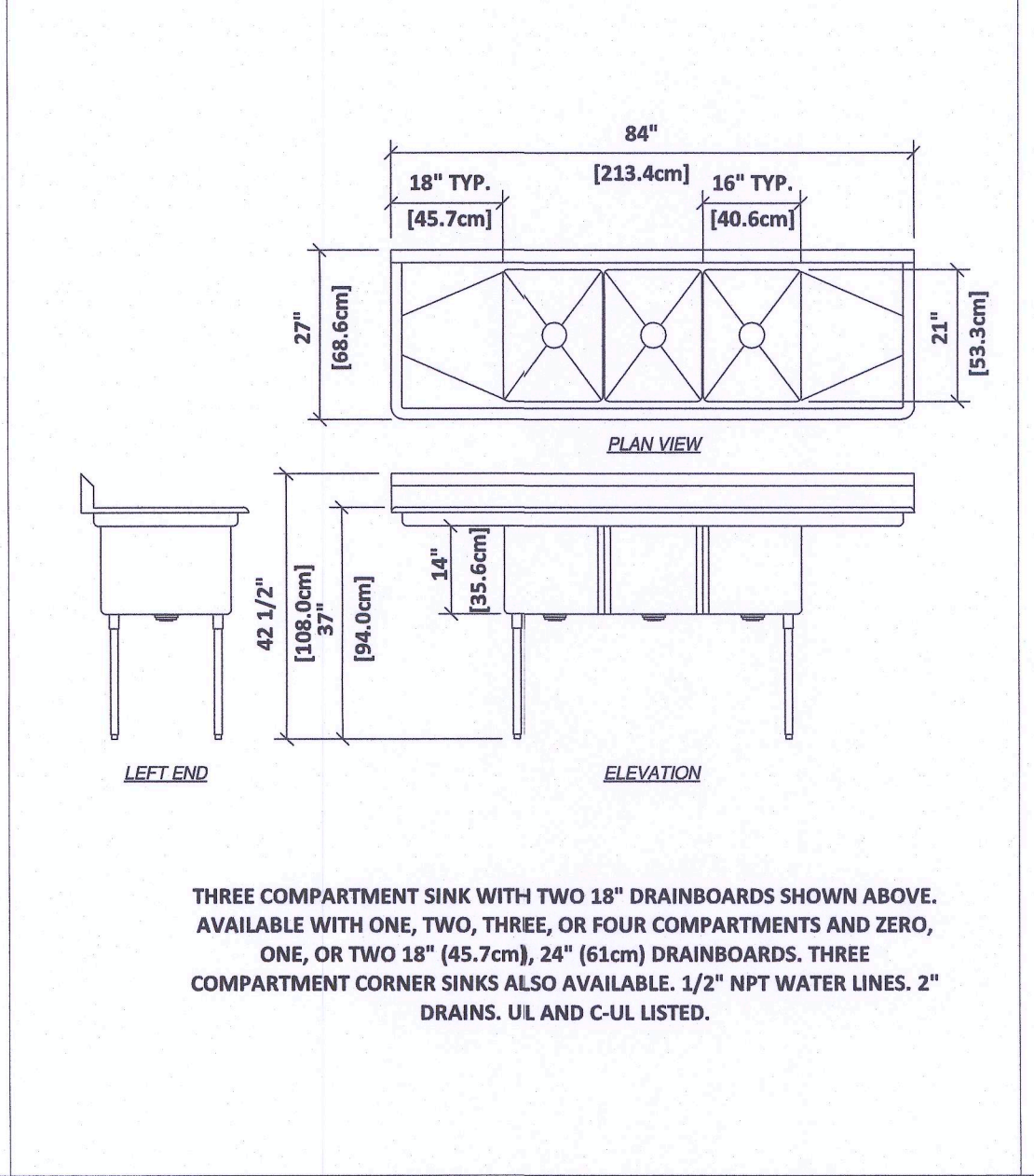
DUKE STAINLESS STEEL WORKTABLE



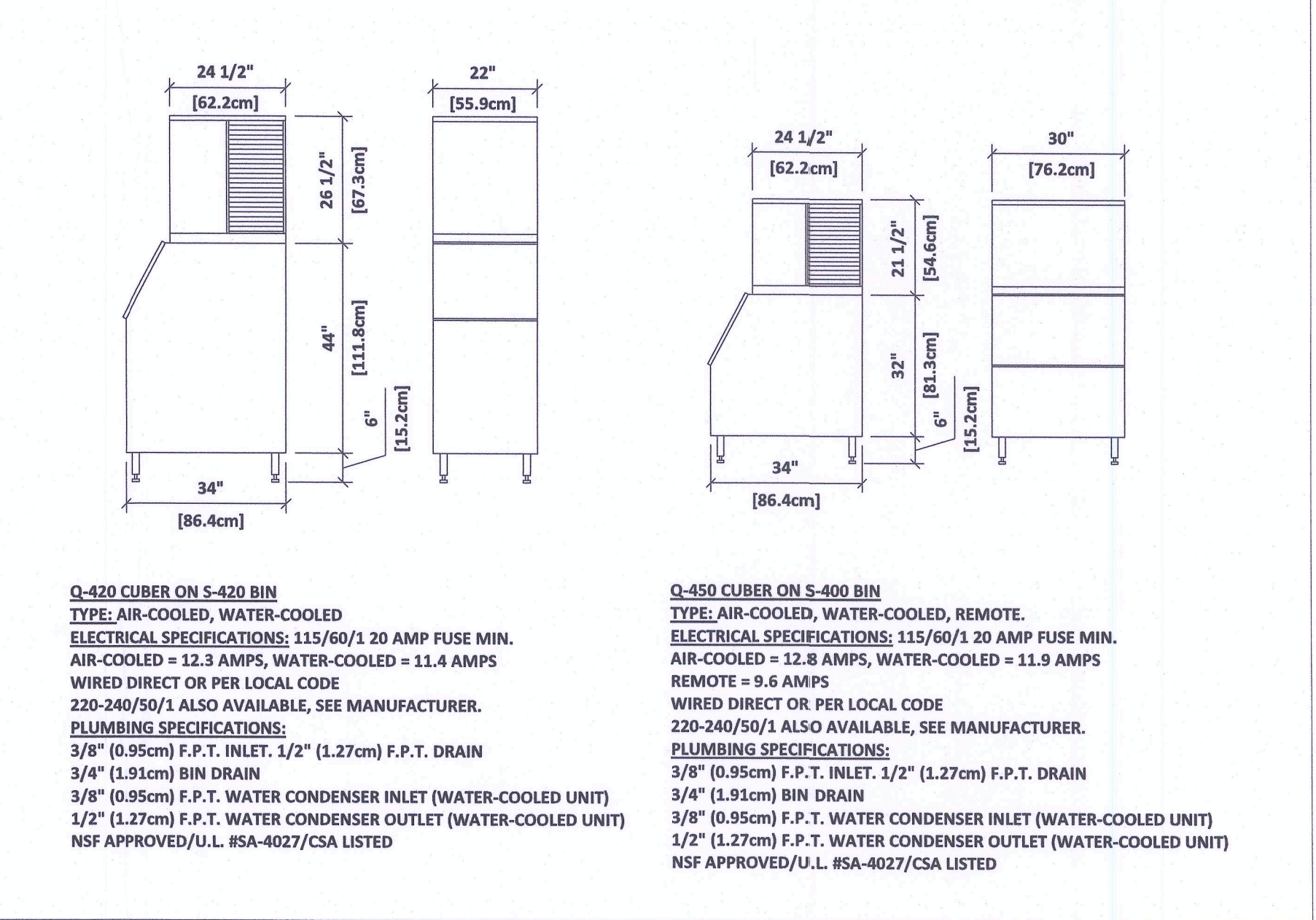
HOT & COLD WATER SYSTEM



DRAINAGE & VENT SYSTEM



DUKE STAINLESS STEEL SINK



MANITOWOC ICE CUBER

THIS DRAWING IS FURNISHED BY FWH ON BEHALF OF SUBWAY IP, L.L.C. ("SIP") D/B/A SUBWAY. RECIPIENT MUST DETERMINE IF THIS DRAWING MUST BE SUBMITTED TO A LICENSED ARCHITECT OR SIMILAR PROFESSIONAL UNDER FEDERAL, STATE OR LOCAL LAW. ANY CHANGES MUST BE APPROVED BY SIP.
 DO NOT SCALE DRAWING. WRITTEN DIMENSIONS TAKE PRECEDENCE OVER SCALED DIMENSIONS. AND SHALL BE VERIFIED IN THE FIELD BY THE GENERAL CONTRACTOR AND/OR FRANCHISEE/OWNER. ANY DISCREPANCY IN DIMENSIONS SHALL BE BROUGHT TO THE IMMEDIATE ATTENTION OF YOUR AREA DEVELOPMENT AGENT OR DESIGNATED FIELD REPRESENTATIVE.
 THE GENERAL CONTRACTOR AND EACH SUB-CONTRACTOR SHALL MAKE HIS OWN INSPECTIONS AND MEASUREMENTS. FWH AND SIP SHALL NOT BE HELD RESPONSIBLE FOR THE ACCURACY OF DIMENSIONS AND FOR ERRORS AND OMISSIONS IN THE DRAWINGS IF WRITTEN CONFIRMATION HAS NOT BEEN RECEIVED BY THE FWH STORE DESIGN DEPARTMENT.
 THIS DRAWING AND THE INFORMATIONAL CONTENT HERE OF IS THE CONFIDENTIAL PROPERTY OF SIP AND IS PROVIDED SOLELY FOR THE USE OF AUTHORIZED FRANCHISEES, THEIR AGENTS AND CONTRACTORS. RECIPIENT AGREES NOT TO REPRODUCE, COPY, USE OR TRANSMIT THIS DRAWING AND/OR ITS INFORMATIONAL CONTENT, IN WHOLE OR IN PART, OR TO ALLOW SUCH ACTION BY OTHERS, FOR ANY PURPOSE, EXCEPT WITH THE WRITTEN PERMISSION OF SIP OR FWH ACTING ON BEHALF OF SIP. RECIPIENT FURTHER AGREES TO SURRENDER THIS DRAWING AND ANY PERMITTED COPIES HEREOF UPON DEMAND.

DESIGNED BY:
DAN BOURQUE

DATE:
MAY 10, 2017

NOTE: THESE DRAWINGS REPRESENT TYPICAL EQUIPMENT PURCHASED THROUGH DOCTOR'S ASSOCIATES LLC. AND DOES NOT REPRESENT ANY EQUIPMENT PURCHASED LOCALLY BY THE FRANCHISEE/OWNER. OWNERS OF STORES OUTSIDE THE UNITED STATES AND CANADA MAY NEED ALTERNATE ELECTRICAL REQUIREMENTS. CONTACT YOUR FWH COORDINATOR OR THE MANUFACTURER FOR THE MODIFIED ELECTRICAL SPECIFICATIONS.

STORES MUST BE CONSTRUCTED AS DESIGNED IN THESE FLOOR PLANS SUBJECT TO FEDERAL, STATE AND LOCAL LAWS. RECIPIENT IS RESPONSIBLE FOR ENSURING COMPLIANCE WITH ALL LAWS. IF MODIFICATIONS ARE NECESSARY, PLEASE CONTACT THE FWH STORE DESIGN DEPARTMENT FOR WRITTEN APPROVAL OF THE REQUIRED CHANGES.

EQUIPMENT BACK-UP SHEETS

SUBWAY

WORLD HEADQUARTERS
325 SUB WAY
MILFORD, CT 06461
(203) 877-4281 (800)888-4848

SHEET #:
1 OF 2
SCALE:
NOT TO SCALE

© 2018 SUBWAY IP, L.L.C.