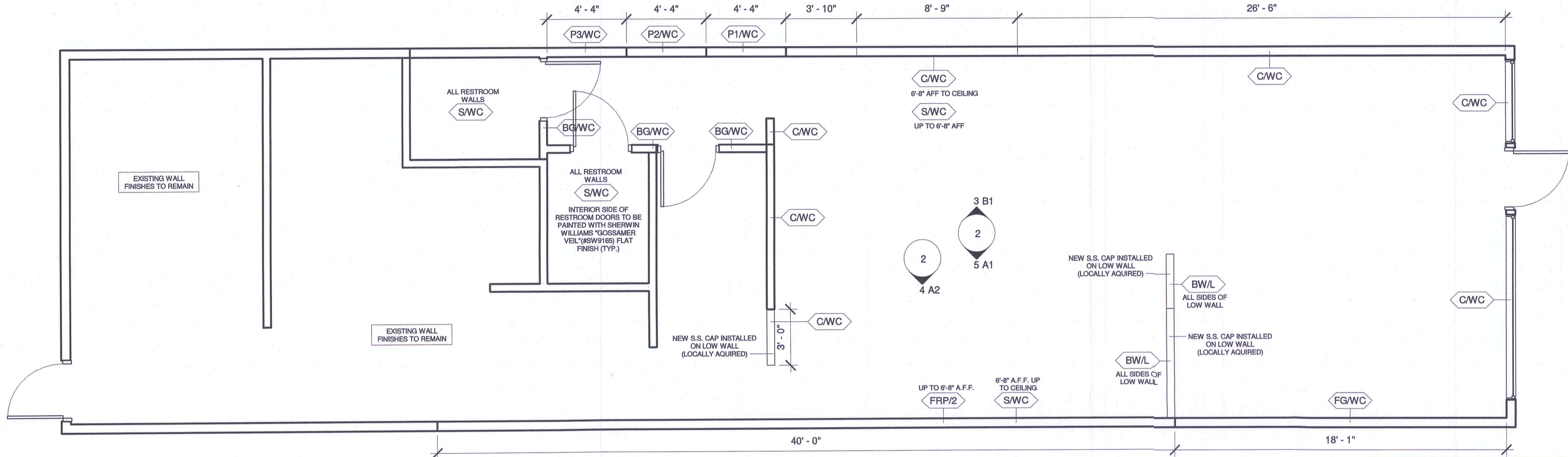


1 FLOOR FINISH PLAN
1/4" = 1'-0"



2 WALL FINISH PLAN
1/4" = 1'-0"

7. Wall Covering & Laminate Schedule

NOTE: THE SUBWAY STORE DESIGN DEPARTMENT WILL NOT ACCEPT RESPONSIBILITY FOR ANY INACCURACIES. THE CALCULATIONS PROVIDED BELOW MUST BE VERIFIED BY THE G.C. AND FRANCHISE OWNER BEFORE ANY ORDER FOR THESE MATERIALS IS ACCEPTED AND PLACED. ALL WALL FINISH CALCULATIONS INCLUDE A 15% BUFFER.

Symbol	Model	Manufacturer	Ordered From	Area	Yards	Description
B/WL	BEIGEWOOD LAMINATE	WILSONART	DAI/GC	65.50 sq ft	7	BEIGEWOOD LAMINATE (7850-60) MATTE FINISH. LOW WALLS TOPPED WITH STAINLESS STEEL TOP ACQUIRED LOCALLY. ORDERED IN 48" W X 144" L SHEETS. INSTALLED BY G.C.
BG/WC	BRAND GREEN	SUNGLO FABRICS	DAI/GC	98.75 sq ft	11	52/54" WIDE. BRAND GREEN WALLCOVERING. COLOR: BRAND GREEN. TEDLAR COATED. INSTALLED VERTICALLY BY G.C.
C/WC	CHEVRON WALLCOVERING	SUNGLO FABRICS	DAI/GC	674.15 sq ft	69	52/54" WIDE VINYL WALLCOVERING. GREY BACKGROUND-WHITE LINES. TEDLAR COATED. INSTALLED VERTICALLY BY G.C.
FG/WC	LIGHT GREEN FOCAL WALLCOVERING	SUNGLO FABRICS	DAI/GC	185.83 sq ft	18	52/54" FOCAL WALL VINYL WALLCOVERING. #92456, E-349 HEAVY CORD. COLOR: LT.GREEN. TEDLAR COATED. INSTALLED VERTICALLY BY G.C.
S/WC	SHIMMER WALLCOVERING	SUNGLO FABRICS	DAI/GC	530.28 sq ft	56	52/54" WIDE VINYL WALLCOVERING. COLOR: SILVER CREAM. TEDLAR COATING. INSTALLED VERTICALLY BY G.C.
P1/WC	STRIPES WALLCOVERING- PANEL 1	SUNGLO FABRICS	DAI/GC	43.33 sq ft	5	52/54" WIDE VINYL WALLCOVERING. COLOR: LINEN BACKGROUND WITH GREEN AND YELLOW STRIPES. TEDLAR COATED. INSTALLED VERTICALLY BY G.C.
P2/WC	STRIPES WALLCOVERING- PANEL 2	SUNGLO FABRICS	DAI/GC	43.33 sq ft	5	52/54" WIDE VINYL WALLCOVERING. COLOR: LINEN BACKGROUND WITH GREEN AND YELLOW STRIPES. TEDLAR COATED. INSTALLED VERTICALLY BY G.C.
P3/WC	STRIPES WALLCOVERING- PANEL 3	SUNGLO FABRICS	DAI/GC	43.33 sq ft	5	52/54" WIDE VINYL WALLCOVERING. COLOR: LINEN BACKGROUND WITH GREEN STRIPES. TEDLAR COATED. INSTALLED VERTICALLY BY G.C.

6. Floor Schedule

NOTE: THE SUBWAY STORE DESIGN DEPARTMENT WILL NOT ACCEPT RESPONSIBILITY FOR ANY INACCURACIES. THE CALCULATIONS PROVIDED BELOW MUST BE VERIFIED BY THE G.C. AND...

Symbol	Floor	Manufacturer	Order From	Area	Description
F1	CUSTOM CROSSVIL/ER AREA/RESTROOMS	CROSSVILLE MANUFACTURING	733.26 sq ft	OPTION 1: CROSSVILLE, "SILVER SANDS" 12" X 24" PORCELAIN FLOOR TILES. COLOR: AD-125-2. 3/16" THICK GROUT LINES. LATICRETE PERMACOLOR SELECT. CEMENTITIOUS GROUT. COLOR: 35 MOCHA. OPTION 2: PORCELANOSA, "LINK FLOOR PICCADILLY" LVT. 12" X 24" X 1/4" THICK. HEAVY DUTY WATERPROOF OVERLAY ON SELF ADHESIVE MEMBRANE. INSTALLED BY G.C.	

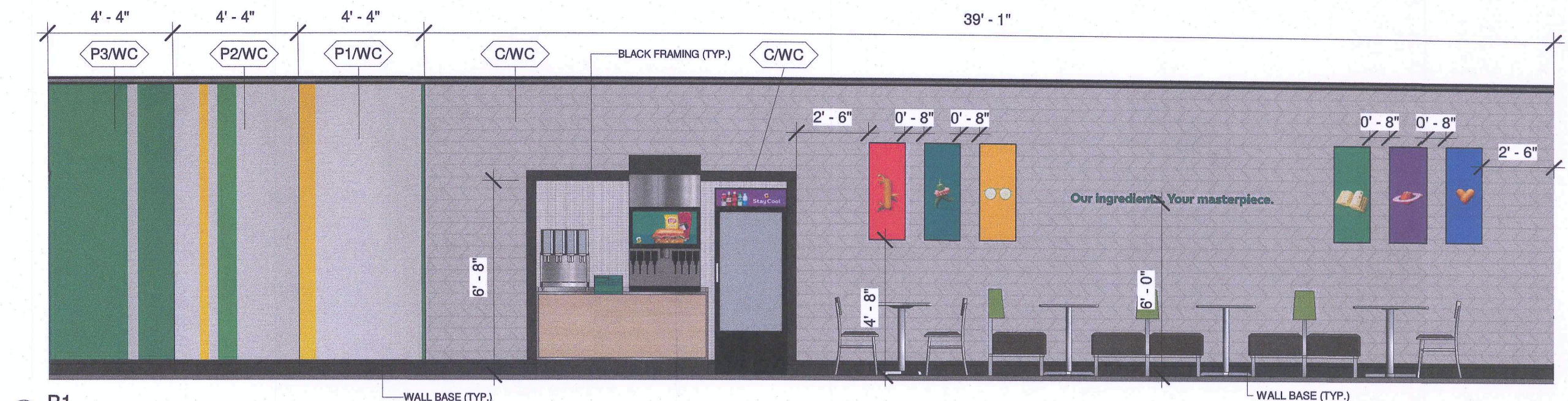
8. FRP Schedule

NOTE: THE SUBWAY STORE DESIGN DEPARTMENT WILL NOT ACCEPT RESPONSIBILITY FOR ANY INACCURACIES. THE CALCULATIONS PROVIDED BELOW MUST BE VERIFIED BY THE G.C. AND...

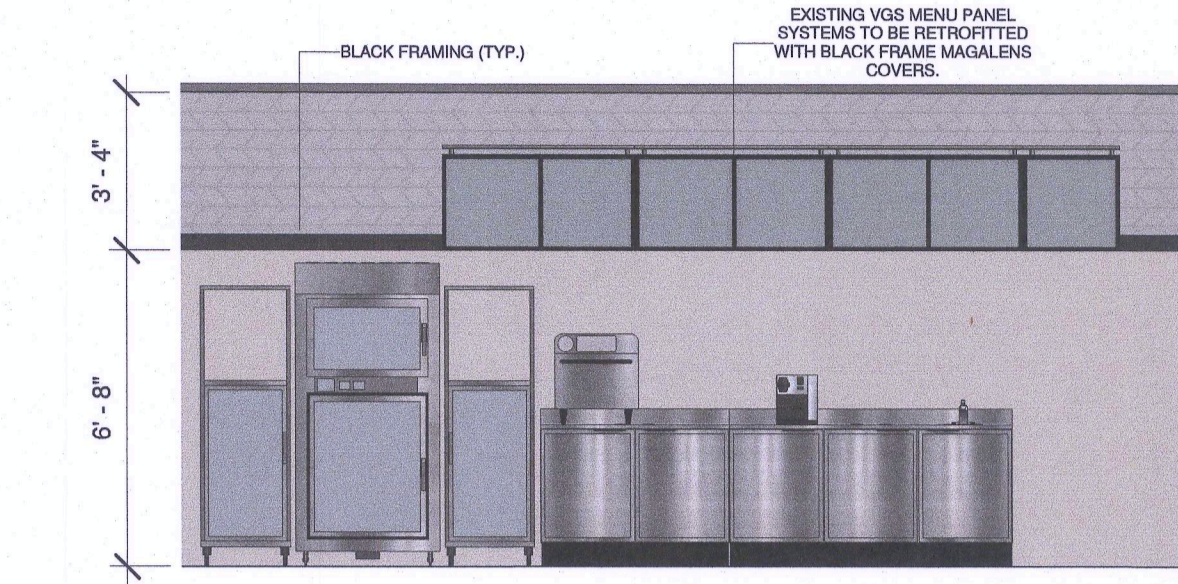
Symbol	Model	Manufacturer	Order From	Area	# Of Sheets	Description
FRP/2	SMOOTH H GRAY FRP	CRANE COMPOSITES	DAI/GC	266.67 sq ft	8	4' X 10' X .075" GLASSBORO SMOOTH LIGHT GRAY FIBERGLASS REINFORCED PANELS- WATER RESISTANT COVERING. LIGHT GRAY MOLDINGS AND TRIM BY MFG. INSTALLED BY G.C.

FRP CALCULATION WORKSHEET

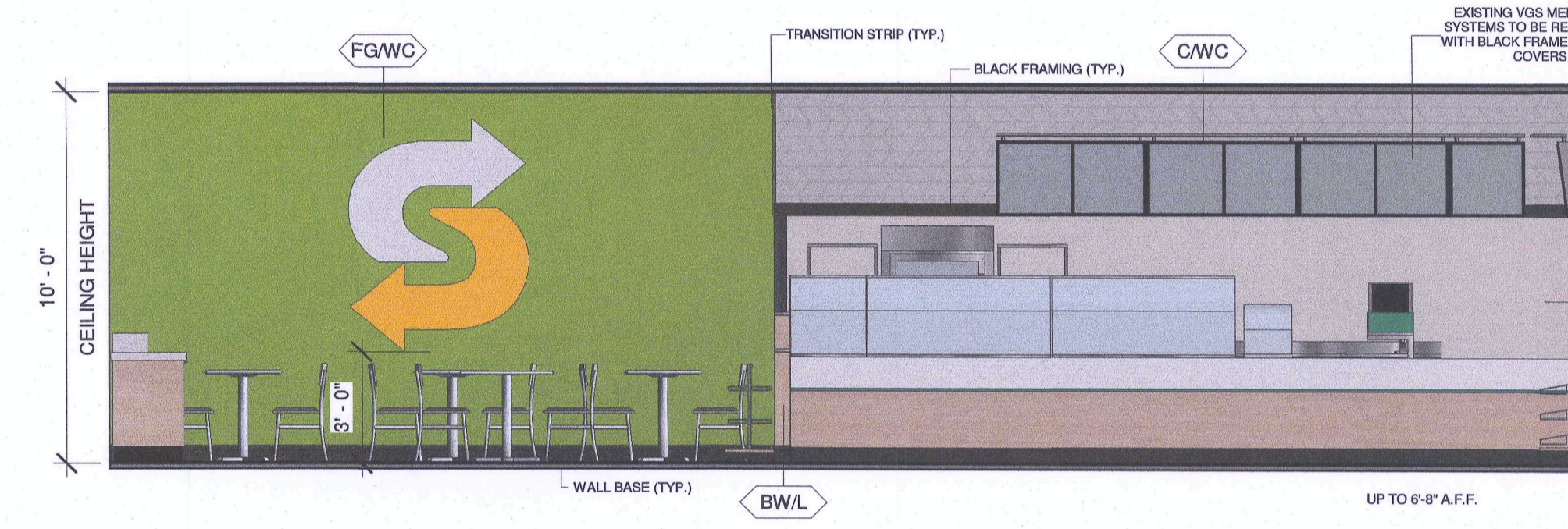
	WHITE FRP (FRP/1)	SMOOTH GRAY FRP (FRP/2)
PVC DIVISION MOLDING (NUMBER OF FRP PANELS MINUS 1)	X	7
PVC INSIDE CORNER (INSIDE CORNERS WHERE FRP MEET)	X	0
PVC OUTSIDE (OUTSIDE CORNERS WHERE FRP MEET)	X	0
PVC CAP MOLDING (EDGES WHERE FRP BEGINS & ENDS & DOORWAYS)	X	2



3 B1
1/4" = 1'-0"



4 A2
1/4" = 1'-0"



5 A1
1/4" = 1'-0"

10. Wall Detail Schedule

NOTE: THE SUBWAY STORE DESIGN DEPARTMENT WILL NOT ACCEPT RESPONSIBILITY FOR ANY INACCURACIES. THE CALCULATIONS PROVIDED BELOW MUST BE VERIFIED BY THE G.C. AND FRANCHISE OWNER BEFORE ANY ORDER FOR THESE MATERIALS IS...

Model	Manufacturer	Ordered From	Length	8 ft Lengths	12 ft Lengths	Description
BLACK FRAMING CORNER GUARD	GFX SUNGLO FABRICS	DAI/G.C.	69' - 5"	10	8	BLACK SINTRA DATUM MOLDING. 4" X 1/4" THICK. 1/2" X 1/2" ALUMINUM GUARDS. FOR WALLCOVERING CORNER TRANSITIONS. BRUSHED ALUMINUM FINISH BY MFG. INSTALLED BY G.C.
TRANSITION STRIPS	SUNGLO FABRICS	DAI/G.C.	3' - 4"	1	1	1" WIDE ALUMINUM STRIPS. FOR WALLCOVERING TRANSITION. BRUSHED ALUMINUM FINISH BY MFG. INSTALLED BY G.C.
WALL BASE	PARKLAND PLASTICS	DAI/G.C.	125' - 7 1/2"	21	14	6" X 8" CUSTOMER AREA BLACK DUBBASE WALL PROTECTION SYSTEM. RESIN WITH SMOOTH FINISH. INSTALLED BY G.C.



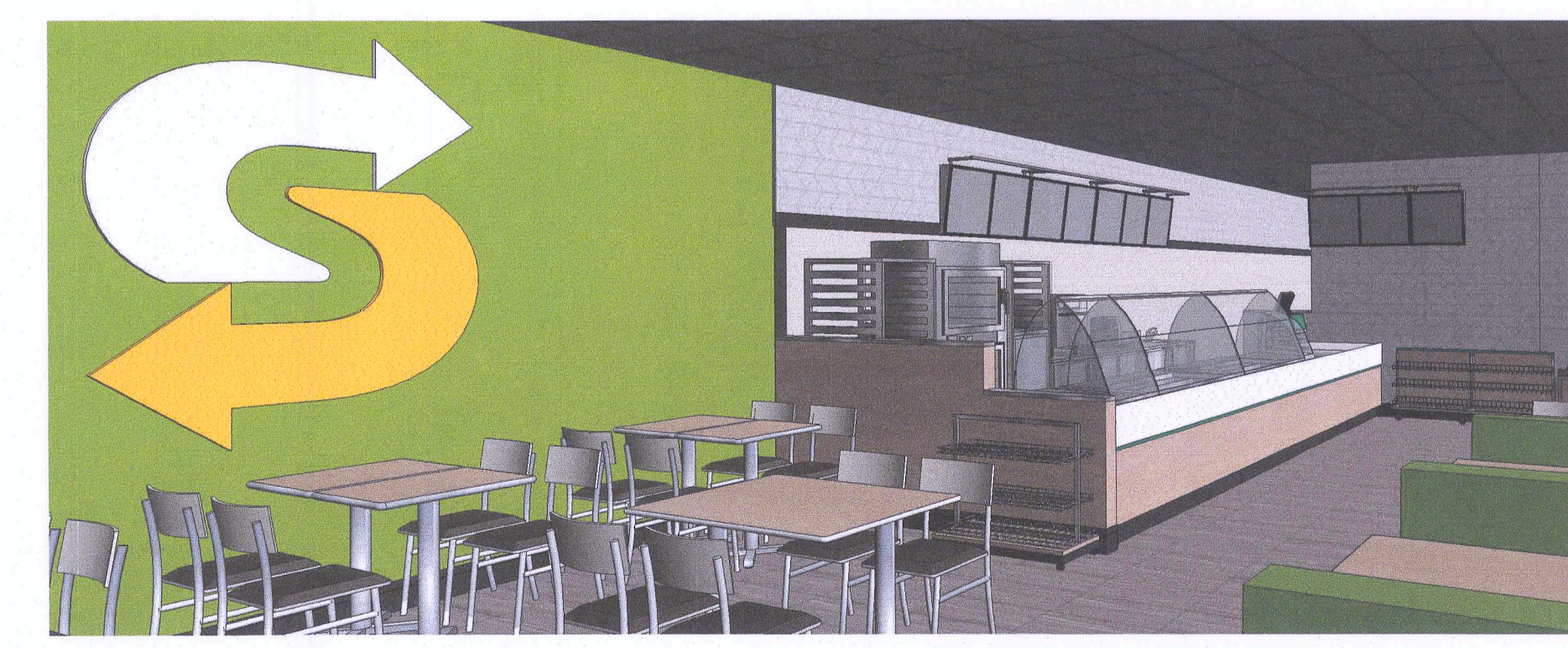
3D View 2

SYMBOL LEGEND

- 120V DUPLEX OUTLET
- 220V SINGLE OUTLET
- ELECTRIC PANEL
- PHONE JACK
- DATA JACK
- CEILING MOUNTED
- FLOOR MOUNTED
- JUNCTION BOX
- THERMOSTAT
- DIGITAL MEDIA PLAYER

FRESH START LOCATION

ELECTRICAL OUTLET HEIGHTS MEASURED TO BOTTOM OF BOX. ONE ELECTRICAL JUNCTION BOX TO BE LOCATED IN CEILING ABOVE EACH WINDOW.
 - GUNO MODEL SW280-PLUS WATER FILTRATION SYSTEM IS REQUIRED IN ALL NEW STORES THAT DISPENSE BEVERAGES. THE RECOMMENDED PLACEMENT FOR INSTALLATION IS MOUNTED TO SODA STRIP BACK BY COCA-COLA. SECONDARY PLACEMENT OPTION IS MOUNTED ON THE FRONT BEVERAGE COUNTER WHEN SPACE LIMITATIONS OCCUR. REQUIRED: 1/2" INCOMING WATER LINE FEED WITH 1/2" BALL VALVE SHUTOFF AND 1/2" FPT CONNECTION. MINIMUM 110 VOLT, 20 AMP ELECTRICAL SERVICE TO SUPPORT THE CARBONATOR AND WATER BOOSTER (MUST BE DEDICATED CIRCUIT).
 - EST LIGHTS INSTALLED BY G.C. PER LOCAL CODE.
 - EMERGENCY LIGHTS INSTALLED BY G.C. PER LOCAL CODE.
 - EXTINGUISHERS, SMOKE AND FIRE DETECTION SYSTEMS INSTALLED BY G.C. PER LOCAL CODE.
 - LABOR & MATERIAL SUPPLIED BY G.C. UNLESS OTHERWISE NOTED.
 - ALL DIMENSIONS TO BE VERIFIED BY G.C. ON SITE.
 - REFRIGERATOR AND FREEZER MUST BE ADEQUATELY VENTILATED. REFER TO MANUFACTURER FOR DETAILS.



3D View 1

THIS DRAWING IS FURNISHED BY FWH ON BEHALF OF SUBWAY IP, L.L.C. ("SIP") DBA SUBWAY. RECIPIENT MUST DETERMINE IF THIS DRAWING MUST BE SUBMITTED TO A LICENSED ARCHITECT OR SIMILAR PROFESSIONAL, UNDER FEDERAL, STATE OR LOCAL LAW. ANY CHANGES MUST BE APPROVED BY SIP.
 DO NOT SCALE DRAWING. WRITTEN DIMENSIONS TAKE PRECEDENCE OVER SCALED DIMENSIONS. AND SHALL BE VERIFIED IN THE FIELD BY THE GENERAL CONTRACTOR AND/OR FRANCHISE OWNER. ANY DISCREPANCY IN DIMENSIONS SHALL BE BROUGHT TO THE IMMEDIATE ATTENTION OF YOUR AREA DEVELOPMENT AGENT OR DESIGNATED FIELD REPRESENTATIVE.
 THE GENERAL CONTRACTOR AND EACH SUB-CONTRACTOR SHALL MAKE HIS OWN INSPECTIONS AND MEASUREMENTS. FWH AND SIP SHALL NOT BE HELD RESPONSIBLE FOR THE ACCURACY OF DIMENSIONS AND FOR ERRORS AND OMISSIONS IN THE DRAWINGS IF WRITTEN CONFIRMATION HAS NOT BEEN RECEIVED BY THE FWH STORE DESIGN DEPARTMENT.
 THIS DRAWING AND THE INFORMATIONAL CONTENT HERE OF IS THE CONFIDENTIAL PROPERTY OF SIP AND IS PROVIDED SOLELY FOR THE USE OF AUTHORIZED FRANCHISEES, THEIR AGENTS AND CONTRACTORS. RECIPIENT AGREES NOT TO REPRODUCE, COPY, USE OR TRANSMIT THIS DRAWING AND/OR ITS INFORMATIONAL CONTENT, IN WHOLE OR IN PART, OR TO ALLOW SUCH ACTION BY OTHERS, FOR ANY PURPOSE, EXCEPT WITH THE WRITTEN PERMISSION OF SIP OR FWH ACTING ON BEHALF OF SIP. RECIPIENT FURTHER AGREES TO SURVEILANCE THIS DRAWING AND ANY PERMITTED COPIES HEREOF UPON DEMAND.

DESIGNED BY: **Saisystems INTERNATIONAL**
 DAN BOURQUE
 REVIEWED BY:

REVISIONS

NO.	DATE	DESCRIPTION	DRAWN BY

RESTAURANT #: 17575
 ADDRESS: 15113 Sheldon, Plymouth, MI 48170

DATE: September 27, 2019

DEVELOPMENT AGENT: Zaid Elia 527
 FRANCHISEE: Brad Turowski

RESTAURANT MUST BE CONSTRUCTED AS DESIGNED IN THESE FLOOR PLANS SUBJECT TO FEDERAL, STATE AND LOCAL LAWS. RECIPIENT IS RESPONSIBLE FOR ENSURING COMPLIANCE WITH ALL LAWS. IF MODIFICATIONS ARE NECESSARY, PLEASE CONTACT THE FWH STORE DESIGN DEPARTMENT FOR WRITTEN APPROVAL OF THE REQUIRED CHANGES.

SUBWAY

WORLD HEADQUARTERS
 325 SUB WAY
 MILFORD, CT 06461
 (203) 877-4281 (800)888-4848

SHEET #: **2**
 SCALE: As indicated
 © 2018 SUBWAY IP, L.L.C.