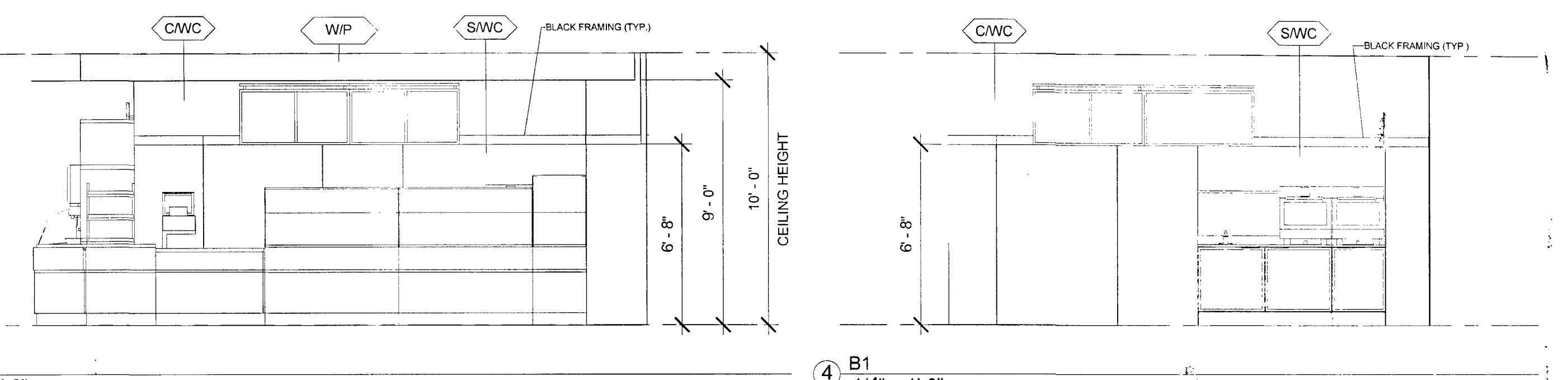
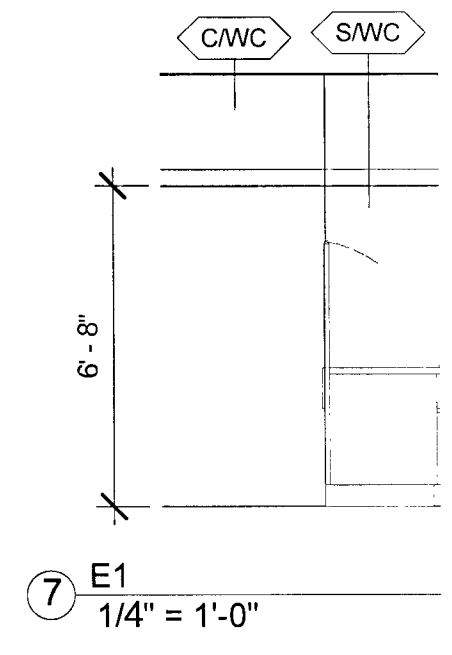


① DIMENSION & ELECTRICAL PLAN
1/4" = 1'-0"

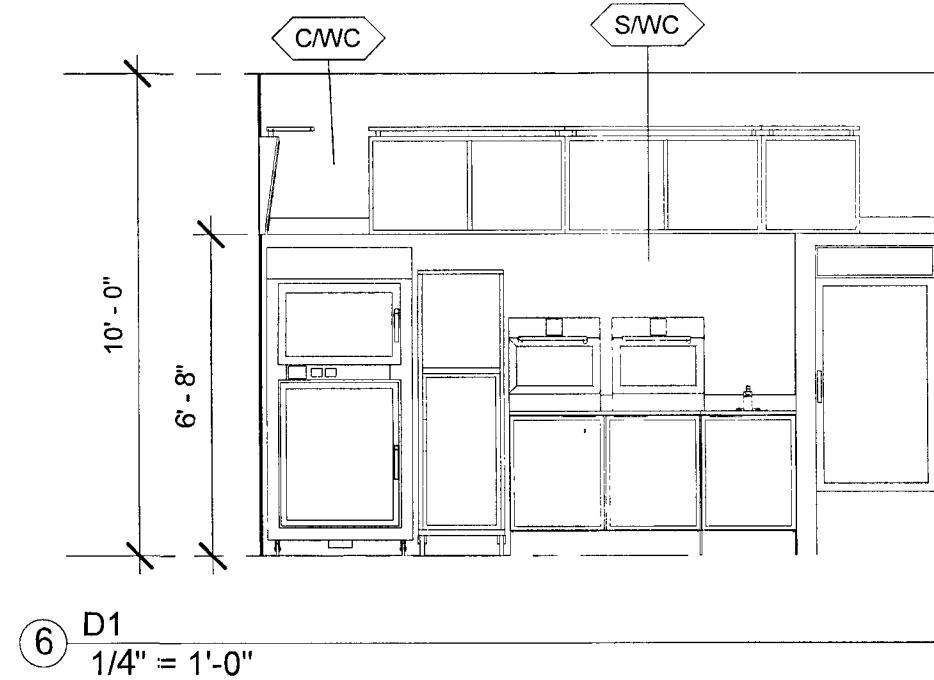


③ A1
1/4" = 1'-0"

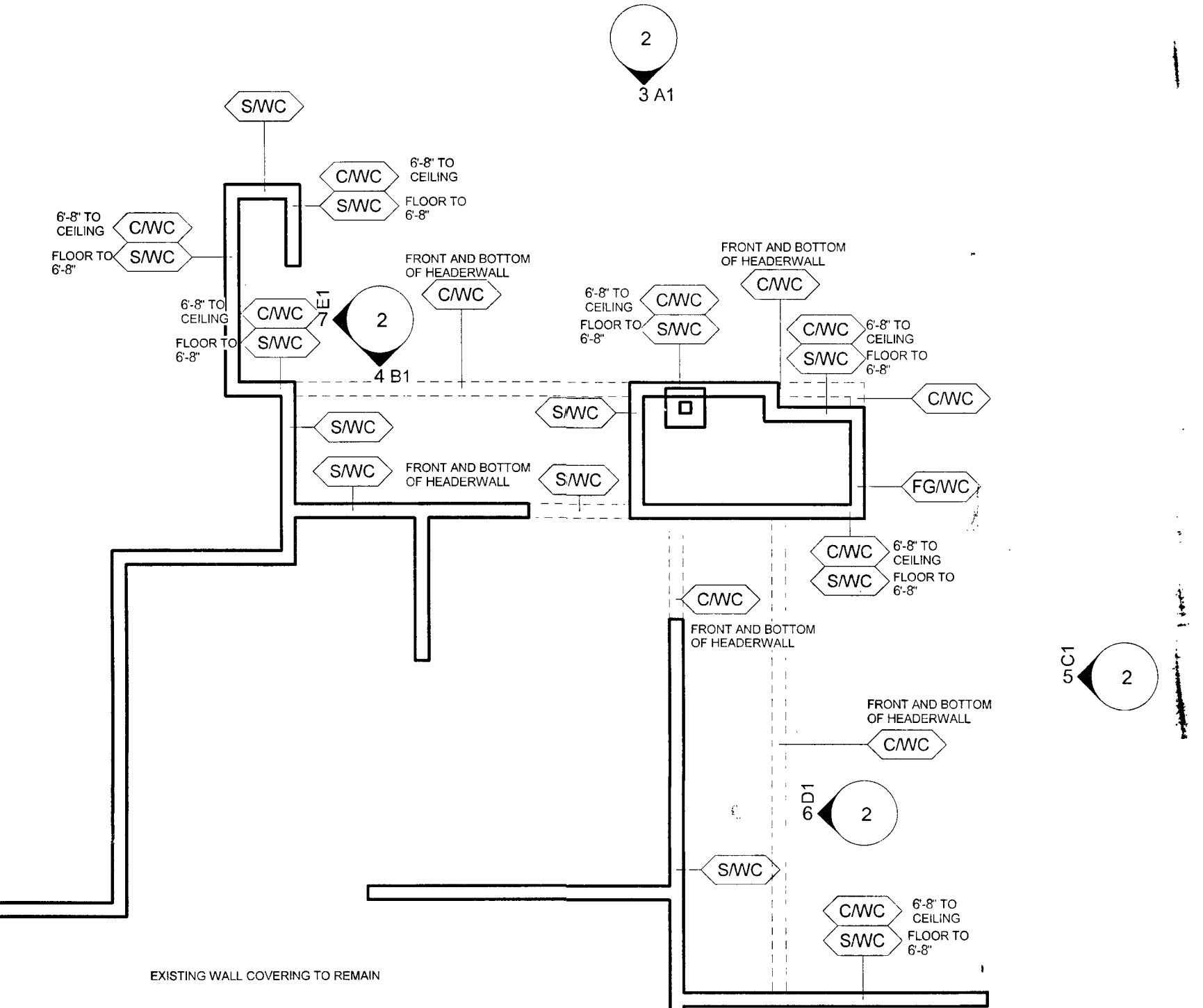
④ B1
1/4" = 1'-0"



⑦ E1
1/4" = 1'-0"



⑥ D1
1/4" = 1'-0"



② WALL FINISH PLAN
1/4" = 1'-0"

7. Wall Covering & Laminate Schedule

NOTE: THE SUBWAY STORE DESIGN DEPARTMENT WILL NOT ACCEPT RESPONSIBILITY FOR ANY INACCURACIES. THE CALCULATIONS PROVIDED BELOW MUST BE VERIFIED BY THE G.C. AND FRANCHISE OWNER BEFORE ANY ORDER FOR THESE MATERIALS IS ACCEPTED AND PLACED. ALL WALL FINISH CALCULATIONS INCLUDE A 15% BUFFER.

Symbol	Model	Manufacturer	Ordered From	Area	Yards	Description
CWC	CHEVRON WALLCOVERING	SUNGLO FABRICS	DAI/GC	270.79 ft ²	34	54" WIDE VINYL WALLCOVERING. COLOR, BLOTCH-SW 7029 AGREEABLE GREY, TEDLAR COATED. INSTALLED VERTICALLY BY G.C.
FGWC	LIGHT GREEN FOCAL WALLCOVERING	SUNGLO FABRICS	DAI/GC	44.48 ft ²	6	54" FOCAL WALL VINYL WALLCOVERING. #92456, E-349 HEAVY CORD. COLOR: PANTONE 367C-GRADATION-DARKER COLOR. TEDLAR COATED. INSTALLED VERTICALLY BY G.C.
SWC	SHIMMER WALLCOVERING	SUNGLO FABRICS	DAI/GC	406.27 ft ²	47	SHIMMER#950024. 52/54" WIDE VINYL WALLCOVERING. INSTALLED VERTICALLY BY G.C.

10. Wall Detail Schedule

NOTE: THE SUBWAY STORE DESIGN DEPARTMENT WILL NOT ACCEPT RESPONSIBILITY FOR ANY INACCURACIES. THE CALCULATIONS PROVIDED BELOW MUST BE VERIFIED BY THE G.C. AND FRANCHISE OWNER BEFORE ANY ORDER FOR THESE MATERIALS IS ACCEPTED AND PLACED.

Model	Manufacturer	Ordered From	Length	8 ft. Lengths	12 ft. Lengths	Description
BLACK FRAMING VGS	DAI/G.C.	68" - 11 1/2"	14	12		POWDERCOATED BLACK TRIM. 4" X 1/4" THICK.

- ELECTRICAL OUTLET HEIGHTS MEASURED TO BOTTOM OF BOX.
- ONE ELECTRICAL JUNCTION BOX TO BE LOCATED IN CEILING ABOVE EACH WINDOW.
- COND MODEL SWING PLUS WATER FILTRATION SYSTEM IS REQUIRED IN ALL NEW STORES THAT DISPENSE BEVERAGES. THE RECOMMENDED PLACEMENT FOR INSTALLATION IS MOUNTED TO SODA SYRUP RACK BY COCA-COLA. SECONDARY PLACEMENT OPTION IS MOUNTED ON THE BACKROOM WALL. THIS INSTALLATION OPTION IS MOUNTING INSIDE THE FRONT BEVERAGE COUNTER WHEN SPACE LIMITATIONS OCCUR. REQUIRED: 1/2" INCOMING WATER LINE FEED WITH 1/2" BALL VALVE SHUTOFF AND 1/2" FIP CONNECTION. MINIMUM 110 VOLT, 20 AMP ELECTRICAL SERVICE TO SUPPORT THE CARBONATOR AND WATER BOOSTER (MUST BE DEDICATED CIRCUIT).
- SECONDARY CHP RACK IS REQUIRED IN THE CUSTOMER AREA. THE TWO AVAILABLE OPTIONS ARE: BASKET STYLE CHP RACK AT THE POINT OF ORDER (PREFERRED PLACEMENT) OR PURSE RAIL MOUNTED CHP RACK. (MOUNTED ON TOP OF THE PURSE RAIL).
- EXIT LIGHTS INSTALLED BY G.C. PER LOCAL CODE.
- EMERGENCY LIGHTS INSTALLED BY G.C. PER LOCAL CODE.
- EXTINGUISHERS, SMOKE AND FIRE DETECTION SYSTEMS INSTALLED BY G.C. PER LOCAL CODE.
- LABO & MATERIAL SUPPLIED BY G.C. UNLESS OTHERWISE NOTED.
- ALL DIMENSIONS TO BE VERIFIED BY G.C. ON SITE.
- REFRIGERATOR AND FREEZER MUST BE ADEQUATELY VENTILATED. REFER TO MANUFACTURER FOR DETAILS.

THIS DRAWING IS FURNISHED BY FWH ON BEHALF OF SUBWAY IP, INC. ("SIP") DBA SUBWAY. RECIPIENT MUST DETERMINE IF THIS DRAWING MUST BE SUBMITTED TO A LICENSED ARCHITECT OR SIMILAR PROFESSIONAL UNDER FEDERAL, STATE OR LOCAL LAW. ANY CHANGES MUST BE APPROVED BY SIP.

DO NOT SCALE DRAWING. WRITTEN DIMENSIONS TAKE PRECEDENCE OVER SCALED DIMENSIONS AND SHALL BE VERIFIED IN THE FIELD BY THE GENERAL CONTRACTOR AND/OR FRANCHISEE/OWNER. ANY DISCREPANCY IN DIMENSIONS SHALL BE BROUGHT TO THE IMMEDIATE ATTENTION OF YOUR AREA DEVELOPMENT AGENT OR DESIGNATED FIELD REPRESENTATIVE.

THE GENERAL CONTRACTOR AND EACH SUB-CONTRACTOR SHALL MAKE HIS OWN INSPECTIONS AND MEASUREMENTS. FWH AND SIP SHALL NOT BE HELD RESPONSIBLE FOR THE ACCURACY OF DIMENSIONS AND FOR ERRORS AND OMISSIONS IN THE DRAWINGS IF WRITTEN CONFIRMATION HAD NOT BEEN RECEIVED BY THE FWH STORE DESIGN DEPARTMENT.

THIS DRAWING AND THE INFORMATIONAL CONTENT HERE OF IS THE CONFIDENTIAL PROPERTY OF SIP AND IS PROVIDED SOLELY FOR THE USE OF AUTHORIZED FRANCHISEES, THEIR AGENTS AND CONTRACTORS. RECIPIENT AGREES NOT TO REPRODUCE, COPY, USE OR TRANSMIT THIS DRAWING AND/OR ITS INFORMATIONAL CONTENT, IN WHOLE OR IN PART, OR TO ALLOW SUCH ACTION BY OTHERS, FOR ANY PURPOSE, EXCEPT WITH THE WRITTEN PERMISSION OF SIP OR FWH ACTING ON BEHALF OF SIP. RECIPIENT FURTHER AGREES TO SURRENDER THIS DRAWING AND ANY PERMITTED COPIES HEREOF UPON DEMAND.

DESIGNED BY:
RUSSELL RUMFORD

REVIEWED BY:

REVISIONS			
NO.	DATE	DESCRIPTION	DRAWN BY

RESTAURANT MUST BE CONSTRUCTED AS DESIGNED IN THESE FLOOR PLANS SUBJECT TO FEDERAL, STATE AND LOCAL LAWS. RECIPIENT IS RESPONSIBLE FOR ENSURING COMPLIANCE WITH ALL LAWS. IF MODIFICATIONS ARE NECESSARY, PLEASE CONTACT THE FWH STORE DESIGN DEPARTMENT FOR WRITTEN APPROVAL OF THE REQUIRED CHANGES.

RESTAURANT #: 5151
DATE: JUNE 28, 2019

ADDRESS: 530 SOUTH STATE ST.
ANN ARBOR, MI

**FRESH START
LOCATION**

DEVELOPMENT AGENT:
KIP KLOPFENSTEIN

FRANCHISEE:
BRAD TUROWSKI

WORLD HEADQUARTERS
325 SUB WAY
MILFORD, CT 06461
(203) 877-4281 (800)888-4848

SHEET #:
2
SCALE: