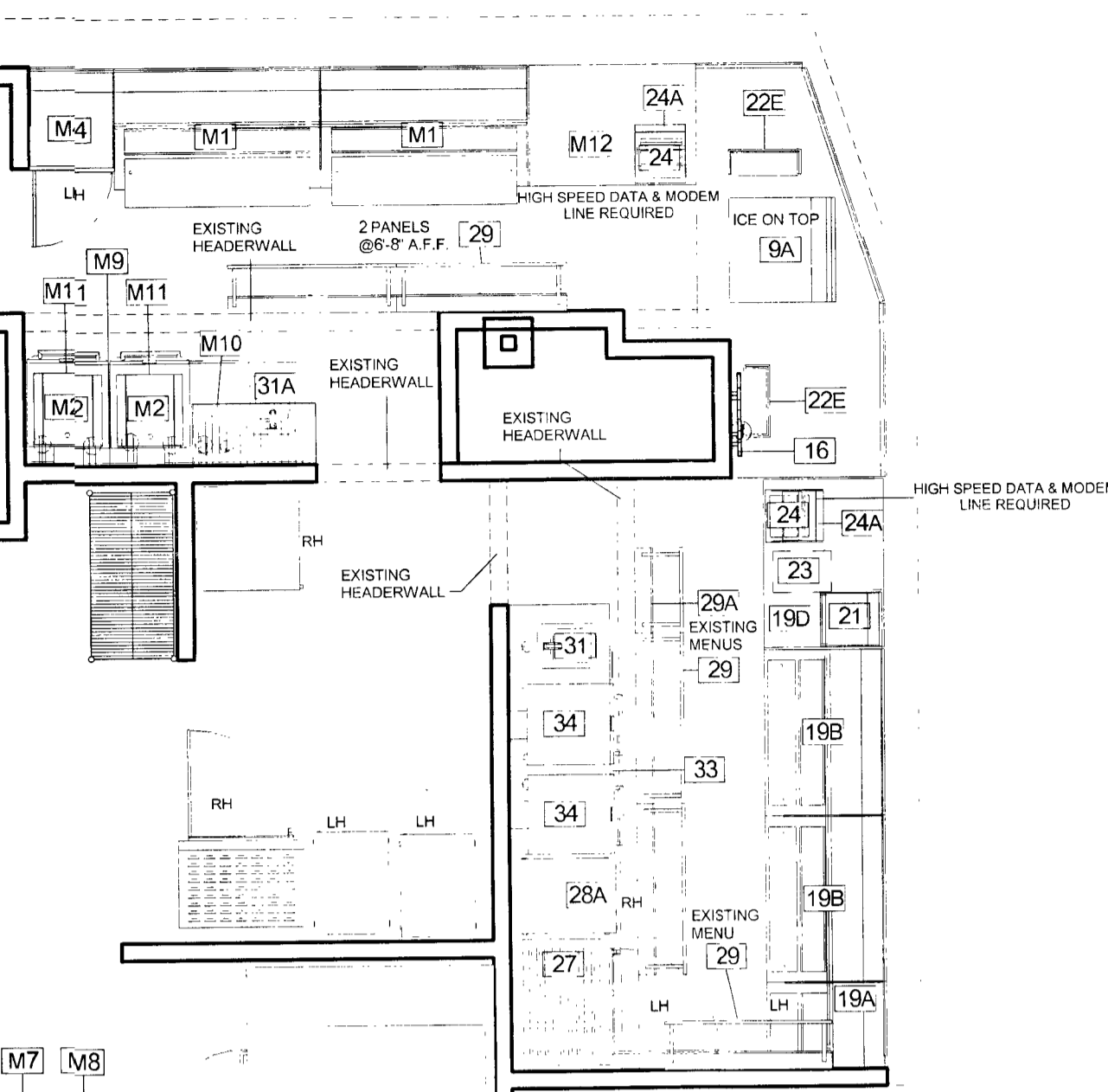


1 FURNITURE & EQUIPMENT PLAN
1/4" = 1'-0"

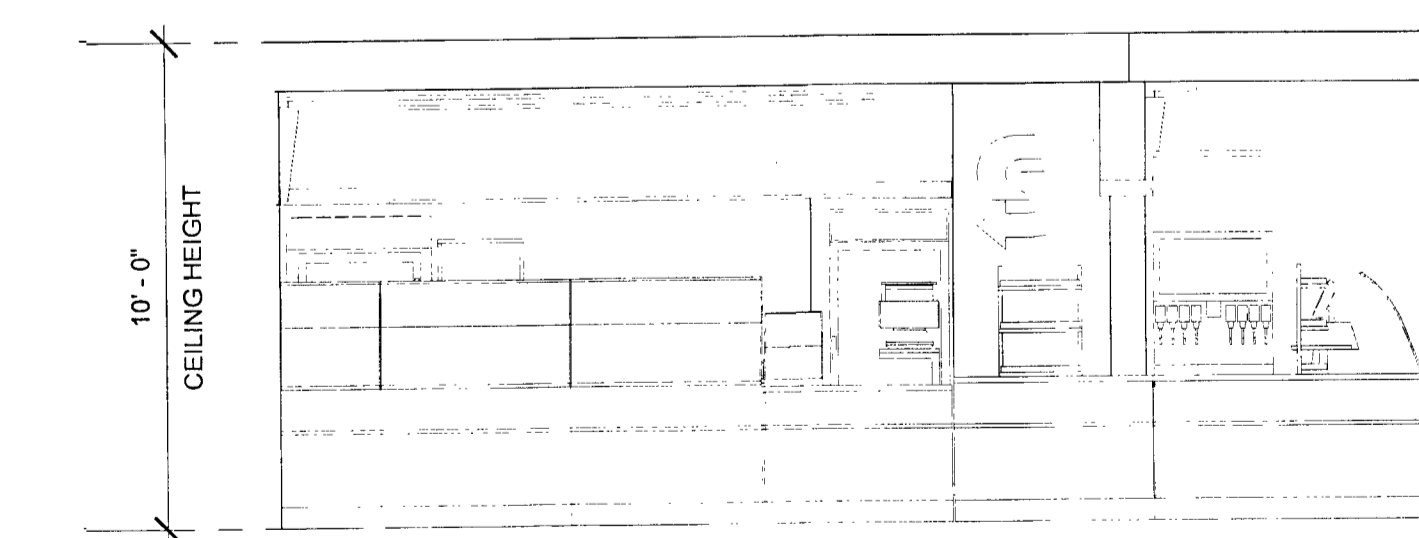


2 SERVICE AREA
1/4" = 1'-0"

3. Furniture Schedule

#	Model	Manufacturer	Ordered From	Equipment Status	Count	Description
9A	SODA FOUNTAIN	CORNELIUS	DAI	Existing	1	8-HEAD COKE SODA FOUNTAIN. DEDICATED 115V, 20AMP DUPLEX OUTLET (NEMA 5-20R) AND 3 INCH MINIMUM FLOOR DRAIN REQUIRED WITHIN 3 FEET. (EQUIPMENT INSTALLED BY COKE).
16	24" ILLUMINATED CHOICE MARK SIGN	TPC	DAI	New	1	24" X 1" THICK HALO LIT "S" LOGO. SINTRA SIGN PIN MOUNTED OFF WALL. INSTALLED BY G.C.
19A	25" HOT FOOD SECTION- RH	DUKE	DAI/G.C.	Existing	1	25" HOT FOOD UNIT. 500 WATT 115 VOLT HEATING ELEMENT WITH THERMOSTAT
19B	48" COLD PAN	DUKE	DAI	Existing	2	48" COLD PAN. INSTALLED BY G.C. ULS APPROVED. ELECTRICAL CONNECTIONS AND WIRING TO LOCAL AND STATE CODE REQUIREMENTS AS DETERMINED BY G.C. OR ELECTRICIAN.
19C	48" CASH SECTION	DUKE	DAI	Existing	1	48" CASH SECTION X 34" ADA REQUIRED WORKING HEIGHT. POS UNIT ON COUNTERTOP SHELF.
21	COOKIE DISPLAY CASE	NEMCO	DAI	New	1	4 TIER FULLY ENCLOSED COOKIE DISPLAY CASE. GLASS AND POLYCARBONATE CONSTRUCTION.
22E	24" COUNTERTOP CHIP RACK	FRITO-LAY	DAI	Existing	2	24" COUNTERTOP CHIP RACK.
23	SAFE	C.S.S.	DAI	Existing	1	QUICK DROP. INSTALLED BY G.C. IN SERVICE AREA
24	P.O.S.	PARMICROS/HP	DAI	Existing	2	PC BASED POINT OF SALE SYSTEM. REQUIRES DEDICATED POWER SOURCE WITH ISOLATED GROUND TO BREAKER
24A	P.O.S. SHROUD	VGS	DAI	New	2	SMALL FORMAT PAINTED METAL SHROUD. FOR USE ON POS SHELF.
27	NUVU OVEN LH	NUVU	DAI	Existing	1	NUVU. DEDICATED CIRCUIT REQUIRED. DIRECT WIRED. INSTALLED BY G.C. *1/4" WATERLINE IS REQUIRED
28A	COMBINATION BREAD CABINET (RH)	NU-VU	DAI	Existing	1	INTEGRATED OPEN AIR COOLING RACK ABOVE WITH ENCLOSED CABINET BELOW. INSTALLED BY G.C.
29	2 PANEL FRONT-LIT MENU BOARD	VGS/TRANSLITE SONOMA	DAI	Existing	5	MENUBOARD. 2 X 4' WITH 4' LIGHT FIXTURE MOUNTED TO TOP OF MENUBOARD. SINGLE OUTLET REQUIRED. INSTALLED BY G.C.
29A	1 PANEL BACK-LIT MENU BOARD	VGS/TRANSLITE SONOMA	DAI	Existing	1	MENUBOARD. 2X2. SINGLE OUTLET REQUIRED. INSTALLED BY G.C.
31	24" BACK COUNTER SINK	DUKE	DAI	Existing	1	BACK COUNTER WITH CENTER HAND SINK. STAINLESS STEEL FINISH. INSTALLED BY G.C.
31A	60" BACK COUNTER SINK	DUKE	DAI	Existing	1	BACK COUNTER WITH LEFT HAND SINK. STAINLESS STEEL FINISH. INSTALLED BY G.C.
33	48" REFRIGERATED BACK COUNTER	DUKE	DAI	Existing	1	BACK COUNTER WITH UNDER-COUNTER REFRIGERATOR. STAINLESS STEEL FINISH. INSTALLED BY G.C.
34	RAPID COOK OVEN	MERRYCHEF	DAI	Existing	2	MERRYCHEF. MICROWAVE/CONVECTION OVEN. REFER TO EQUIPMENT BACK-UP SHEET #2 FOR FURTHER SPECIFICATIONS.
52	MICROWAVE	MENUMASTER/SHARP	DAI	Relocating	1	5-20R OUTLET REQUIRED. 1200 WATT. 120V/60HZ/1PH 20 AMP CIRCUIT. DEDICATED CIRCUIT REQUIRED
M1	60" COLD PAN	DUKE	DAI	New	2	60" COLD PAN. INSTALLED BY G.C. ULS APPROVED. ELECTRICAL CONNECTIONS AND WIRING TO LOCAL AND STATE CODE REQUIREMENTS AS DETERMINED BY G.C. OR ELECTRICIAN.
M2	RAPID COOK OVEN	MERRYCHEF	DAI	New	2	MERRYCHEF. MICROWAVE/CONVECTION OVEN. REFER TO EQUIPMENT BACK-UP SHEET #2 FOR FURTHER SPECIFICATIONS.
M4	FRONT LINE DISPLAY CABINET- LH	DUKE	DAI	New	1	ALUMINUM CABINET WITH CURVED GLASS DISPLAY. INSTALLED BY G.C. NSF APPROVED.
M7	DOUGH PRESS	DUTCHESS	DAI	New	1	DUT/DMS-18. MANUALLY OPERATED 18" PRESS. 120V/50/60hz 1 PHASE. 1150 WATTS. 10 AMPS- STANDARD 5-15P NEMA PLUG.
M8	DOUGH PRESS CART	DUTCHESS	DAI	New	1	DXC3. STAINLESS STEEL MACHINE CART. 30 1/2" L X 21 1/2" W X 25" H.
M9	24" BACK COUNTER	DUKE	DAI	New	1	BACK COUNTER WITH STAINLESS STEEL FINISH. INSTALLED BY G.C.
M10	WALL SHELF	INTER METRO	DAI	New	1	18" X 36" SUPER ERRECTA BRIT E. EPOXY COATED, WALL MOUNTED SHELVES. INSTALLED BY G.C.
M11	PADDLE PROTECTOR	MERRYCHEF	DAI	New	2	STAINLESS STEEL OVEN PADDLE STORAGE. SECURES TO BASE OF THE E4S MERRYCHEF SPEED OVEN.
M12	48" CASH SECTION	DUKE	DAI	Existing	1	48" CASH SECTION X 34" ADA REQUIRED WORKING HEIGHT. CUTOUT FOR SAFE BELOW. POS UNIT ON COUNTERTOP SHELF.

- SYMBOL LEGEND**
- ⊕ - 120V DUPLEX OUTLET
 - ⊕ - 220V SINGLE OUTLET
 - ⊞ - ELECTRIC PANEL
 - ⊞ - PHONE JACK
 - ⊞ - DATA JACK
 - CM - CEILING MOUNTED
 - FM - FLOOR MOUNTED
 - ⊞ - JUNCTION BOX
 - ⊞ - THERMOSTAT
 - ⊞ - DIGITAL MEDIA PLAYER



2 SERVICE AREA
1/4" = 1'-0"

- ELECTRICAL OUTLET HEIGHTS MEASURED TO BOTTOM OF BOX.
- ONE ELECTRICAL JUNCTION BOX TO BE LOCATED IN CEILING ABOVE EACH WINDOW.
- CUMMINGS MODEL SW60-PLUS WATER FILTRATION SYSTEM IS REQUIRED IN ALL NEW STORES THAT DISPENSE BEVERAGES. THE RECOMMENDED PLACEMENT FOR INSTALLATION IS MOUNTED TO SODA SYRUP RACK BY COCA-COLA. SECONDARY PLACEMENT OPTION IS MOUNTED ON THE BACKROOM WALL. THIRD INSTALLATION OPTION IS MOUNTING INSIDE THE FRONT BEVERAGE COUNTER WHEN SPACE LIMITATIONS OCCUR. REQUIRED: 1/2" INCHING WATER LINE FEED WITH 1/2" BALL VALVE SHUTOFF AND 1/2" FPT CONNECTION. MINIMUM 110 VOLT, 20 AMP ELECTRICAL SERVICE TO SUPPORT THE CARBONATOR AND WATER BOOSTER (MUST BE DEDICATED CIRCUIT).
- SECONDARY CHIP RACK IS REQUIRED IN THE CUSTOMER AREA. THE TWO AVAILABLE OPTIONS ARE: GABINET STYLE CHIP RACK AT THE POINT OF ORDER (PREFERRED PLACEMENT) OR PURSE RAIL MOUNTED CHIP RACK (MOUNTED ON TOP OF THE PURSE RAIL).
- EXIT LIGHTS INSTALLED BY G.C. PER LOCAL CODE.
- EMERGENCY LIGHTS INSTALLED BY G.C. PER LOCAL CODE.
- EXTINGUISHERS, SMOKE AND FIRE DETECTION SYSTEMS INSTALLED BY G.C. PER LOCAL CODE.
- LABOR & MATERIAL SUPPLIED BY G.C. UNLESS OTHERWISE NOTED.
- ALL DIMENSIONS TO BE VERIFIED BY G.C. ON SITE.
- REFRIGERATOR AND FREEZER MUST BE ADEQUATELY VENTILATED. REFER TO MANUFACTURER FOR DETAILS.

THIS DRAWING IS FURNISHED BY FWH ON BEHALF OF SUBWAY IP, INC. ("SIP") DDBA SUBWAY. RECIPIENT MUST DETERMINE IF THIS DRAWING MUST BE SUBMITTED TO A LICENSED ARCHITECT OR SIMILAR PROFESSIONAL UNDER FEDERAL, STATE OR LOCAL LAW. ANY CHANGES MUST BE APPROVED BY SIP.

DO NOT SCALE DRAWING. WRITTEN DIMENSIONS TAKE PRECEDENCE OVER SCALED DIMENSIONS. AND SHALL BE VERIFIED IN THE FIELD BY THE GENERAL CONTRACTOR AND/OR FRANCHISEE/OWNER. ANY DISCREPANCY IN DIMENSIONS SHALL BE BROUGHT TO THE IMMEDIATE ATTENTION OF YOUR AREA DEVELOPMENT AGENT OR DESIGNATED FIELD REPRESENTATIVE.

THE GENERAL CONTRACTOR AND EACH SUB-CONTRACTOR SHALL MAKE HIS OWN INSPECTIONS AND MEASUREMENTS. FWH AND SIP SHALL NOT BE HELD RESPONSIBLE FOR THE ACCURACY OF DIMENSIONS AND FOR ERRORS AND OMISSIONS IN THE DRAWINGS IF WRITTEN CONFIRMATION HAD NOT BEEN RECEIVED BY THE FWH STORE DESIGN DEPARTMENT.

THIS DRAWING AND THE INFORMATIONAL CONTENT HERE OF IS THE CONFIDENTIAL PROPERTY OF SIP AND IS PROVIDED SOLELY FOR THE USE OF AUTHORIZED FRANCHISEES, THEIR AGENTS AND CONTRACTORS. RECIPIENT AGREES NOT TO REPRODUCE, COPY, USE OR TRANSMIT THIS DRAWING AND/OR ITS INFORMATIONAL CONTENT, IN WHOLE OR IN PART, OR TO ALLOW SUCH ACTION BY OTHERS, FOR ANY PURPOSE, EXCEPT WITH THE WRITTEN PERMISSION OF SIP OR FWH ACTING ON BEHALF OF SIP. RECIPIENT FURTHER AGREES TO SURRENDER THIS DRAWING AND ANY PERMITTED COPIES HEREOF UPON DEMAND.

DESIGNED BY:
RUSSELL RUMFORD

REVIEWED BY:

REVISIONS			
NO.	DATE	DESCRIPTION	DRAWN BY

RESTAURANT #: 5151
DATE: JUNE 28, 2019

ADDRESS: 530 SOUTH STATE ST.
ANN ARBOR, MI

FRESH START LOCATION

DEVELOPMENT AGENT: KIP KLOPFENSTEIN

FRANCHISEE: BRAD TUROWSKI

WORLD HEADQUARTERS
325 SUB WAY
MILFORD, CT 06461

(203) 877-4281 (800)888-4848

SHEET #: 1

SCALE: As Indicated

© 2016 SUBWAY IP, INC.