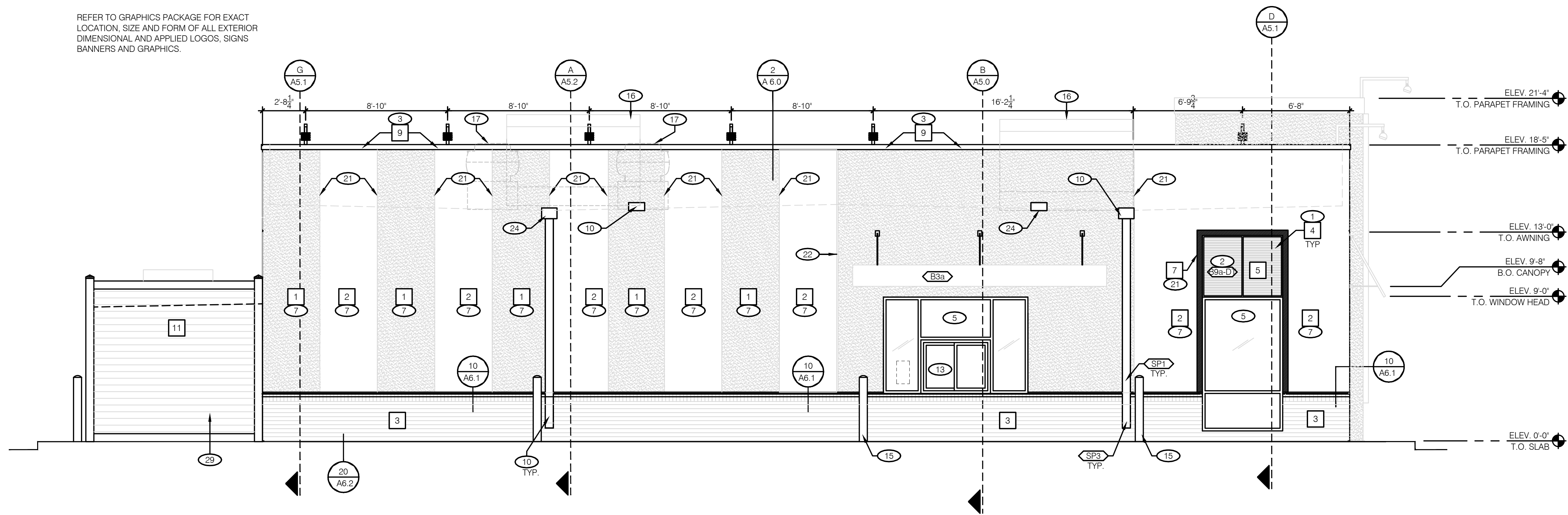


NOTE:

REFER TO GRAPHICS PACKAGE FOR EXACT LOCATION, SIZE AND FORM OF ALL EXTERIOR DIMENSIONAL AND APPLIED LOGOS, SIGNS BANNERS AND GRAPHICS.

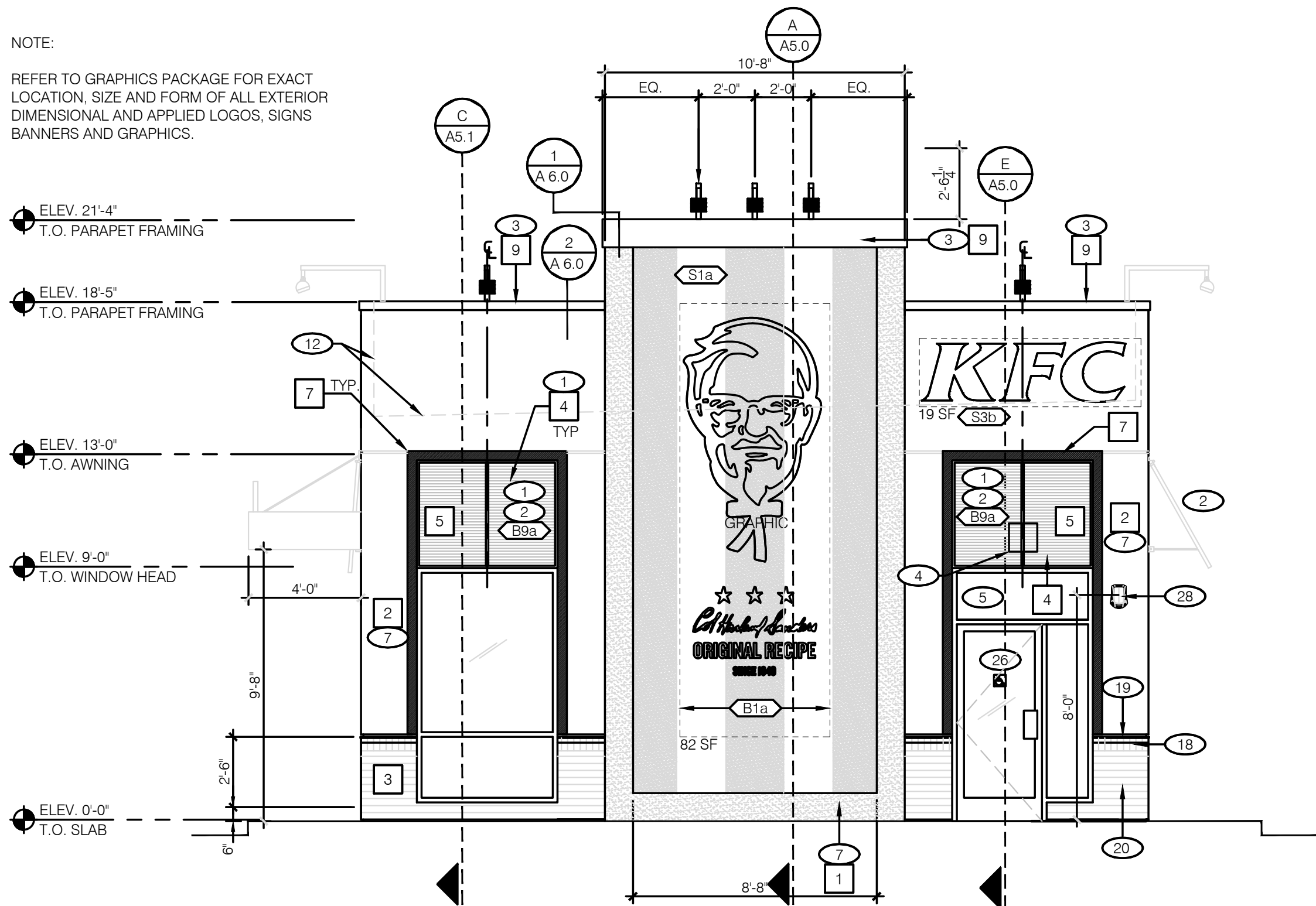


NOTE:
SIGNAGE AND BUILDING ELEMENTS ARE NOT SHOWN ON THIS SHEET, REFER TO "VENDOR SUPPLIED / INSTALLED ELEMENTS" GENERAL NOTE; THIS SHEET.

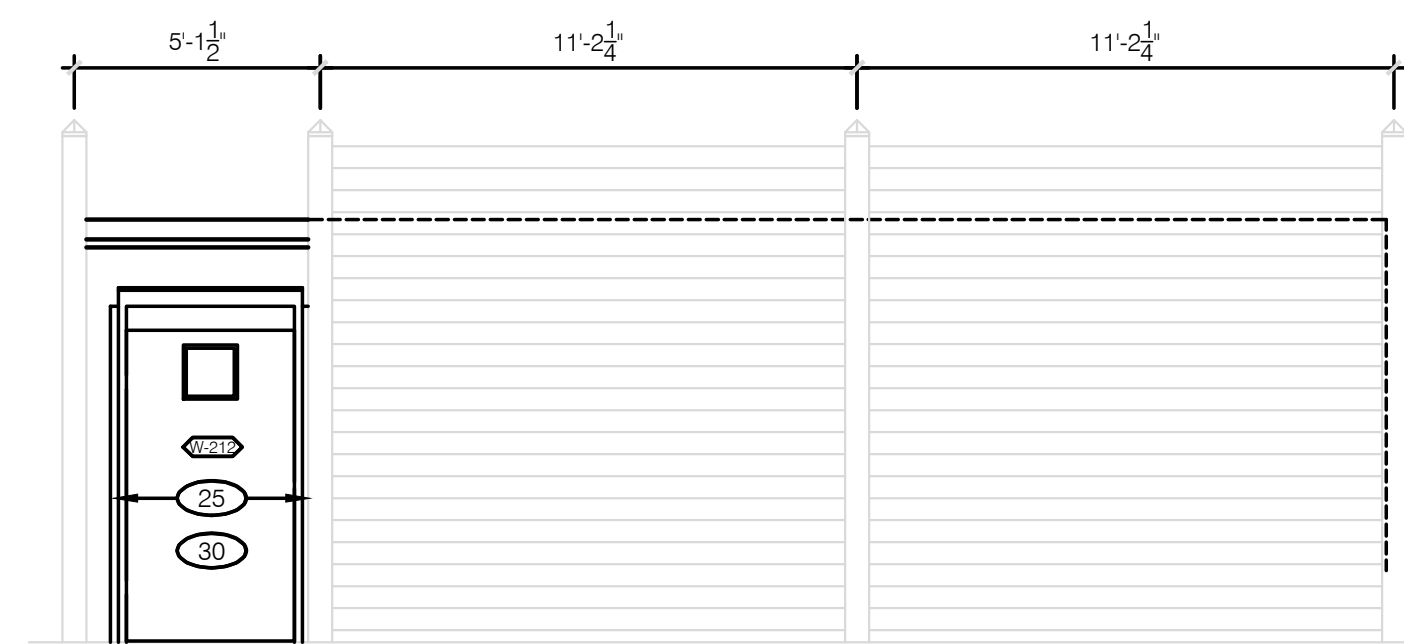
DRIVE-THRU ELEVATION 1/4"=1'-0" **A**

NOTE:

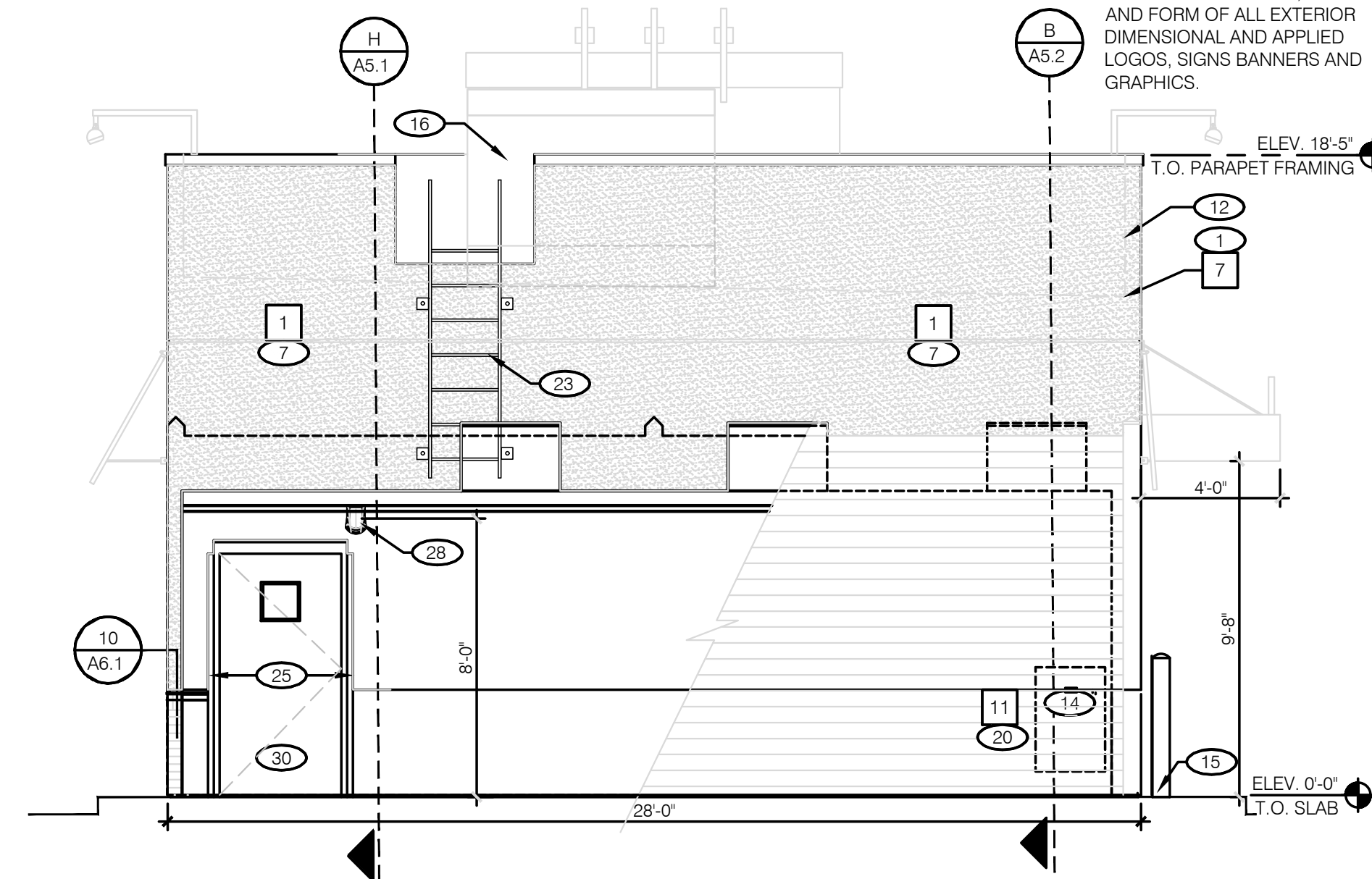
REFER TO GRAPHICS PACKAGE FOR EXACT LOCATION, SIZE AND FORM OF ALL EXTERIOR DIMENSIONAL AND APPLIED LOGOS, SIGNS BANNERS AND GRAPHICS.



FRONT ELEVATION 1/4"=1'-0" **B**



NOTE:
REFER TO GRAPHICS PACKAGE FOR EXACT LOCATION, SIZE AND FORM OF ALL EXTERIOR DIMENSIONAL AND APPLIED LOGOS, SIGNS BANNERS AND GRAPHICS.



REAR ELEVATION 1/4"=1'-0" **C**

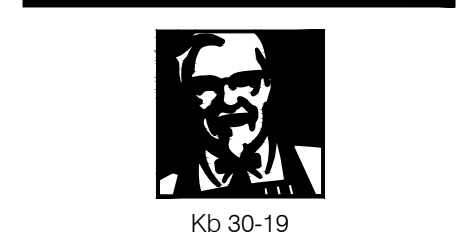
LIS ARCHITECTURE ENGINEERING
 LAND INVESTMENT SERVICES, LLC
 AA 26002040 CA NO. 6853 LB1057
 ARCHITECTURE / ENGINEERING OFFICE
 2572 West State Road 426
 Suite 200, Oviedo, FL 32765
 Phone: (321) 321-1402
 Facsimile: (321) 244-9419
 ENGINEERING OFFICE
 21430 Palm Beach Blvd.
 Suite 100, Oviedo, FL 32765
 Phone: (321) 321-1402
 Facsimile: (321) 244-9419

HAROLD DANIEL HUTTER III
 FL. REG. AR98913

PLAN SET REVISIONS:

CONTRACT DATE: 12-18-2019
 BUILDING TYPE: Kb 30-19
 PLAN VERSION: 2018.A
 SITE NUMBER:
 ENTITY NUMBER:
 STORE NUMBER:
 LIS PROJECT: 2019-303

KFC
 OAKLEAF CORNER OUTPARCEL 3
 DUVAL COUNTY, FL



EXTERIOR ELEVATIONS

A4.1

PLOT DATE: 01/17/2020