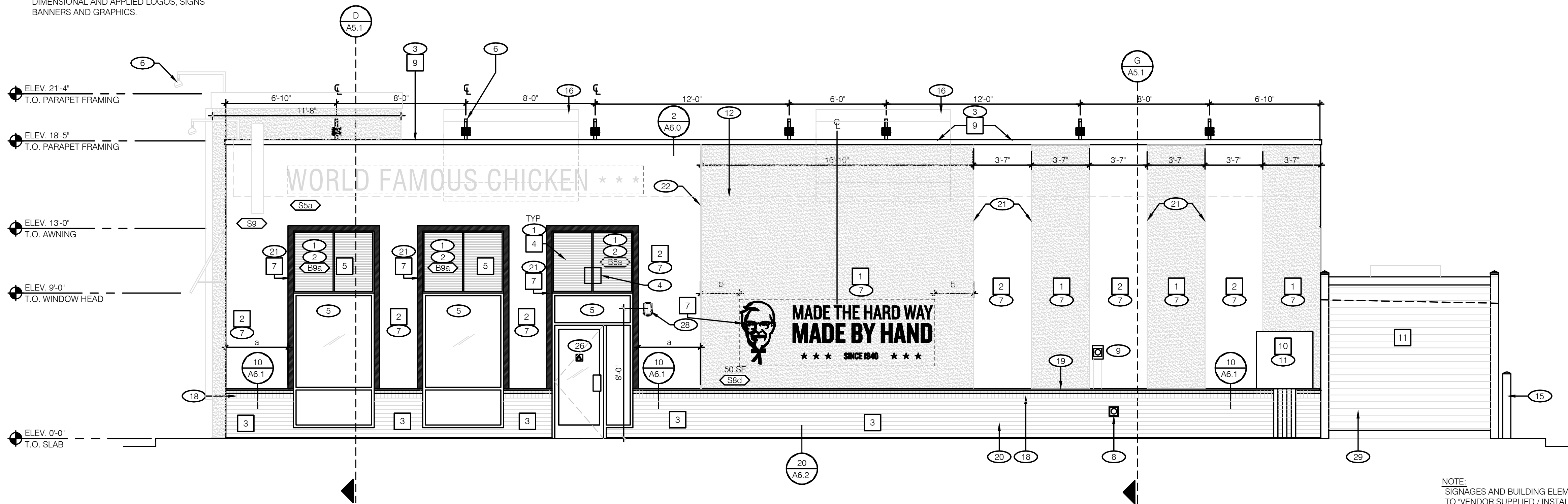


NOTE:
REFER TO GRAPHICS PACKAGE FOR EXACT LOCATION, SIZE AND FORM OF ALL EXTERIOR DIMENSIONAL AND APPLIED LOGOS, SIGNS BANNERS AND GRAPHICS.



NOTE:
SIGNAGES AND BUILDING ELEMENTS NOT SHOWN ON THIS SHEET, REFER TO "VENDOR SUPPLIED / INSTALLED ELEMENTS" GENERAL NOTE, THIS SHEET.

MAIN ENTRY ELEVATION 1/4"=1'-0" **A**

SYMBOL	EXTERIOR WALL AREA	MANUFACTURER	COLOR	NOTES	CONTACT
1	EXTERIOR PAINT	BENJAMIN MOORE	AURA EXTERIOR PAINT EXOTIC RED 2086-10 LOW LUSTER (634)		KURT MCCLELLAND P: (800) 635-5147 / C: (502) 640-1608 kurt.mcclelland@benjaminmoore.com
2	EXTERIOR PAINT	BENJAMIN MOORE	REGAL SELECT EXTERIOR PAINT WEDDING VEIL 2125-70 LOW LUSTER (N401)		KURT MCCLELLAND P: (800) 635-5147 / C: (502) 640-1608 kurt.mcclelland@benjaminmoore.com
3	WAINSCOT		BRICK: PROVIDE GENERIC SMOOTH BRICK	TO BE PAINTED P-13	
4	EXTERIOR PAINT	BENJAMIN MOORE	AURA EXTERIOR PAINT BLACK HORIZON 2132-30 LOW LUSTER (634)		KURT MCCLELLAND P: (800) 635-5147 / C: (502) 640-1608 kurt.mcclelland@benjaminmoore.com
5	LOUVERED AWNINGS	PRE-FINISHED	AURA EXTERIOR PAINT EXOTIC RED 2086-10 LOW LUSTER (634)		
6	BOLLARDS		PVC SLEEVE VERIFY COLOR w/ OWNER		
7	PAINTED 4" BORDER AROUND WINDOW, AWNING AND BEHIND AWNING (ABOVE THE WINDOW)		AURA EXTERIOR PAINT BLACK HORIZON 2132-30 LOW LUSTER (634)		KURT MCCLELLAND P: (800) 635-5147 / C: (502) 640-1608 kurt.mcclelland@benjaminmoore.com
8	STENCIL		BLACK		
9	EXTERIOR METAL	BENJAMIN MOORE	COROTECH POLYESTER URTHANE CUSTOM MATCH BENJAMIN MOORE 2125-70 WEDDING VEIL (V520)	COROTECH PRIMER (V132)	KURT MCCLELLAND P: (800) 635-5147 / C: (502) 640-1608 kurt.mcclelland@benjaminmoore.com
10	EXTERIOR METAL	BENJAMIN MOORE	COROTECH POLYESTER URTHANE CUSTOM MATCH BENJAMIN MOORE 2132-30 BLACK HORIZON (V520)	COROTECH PRIMER (V132)	KURT MCCLELLAND P: (800) 635-5147 / C: (502) 640-1608 kurt.mcclelland@benjaminmoore.com
11	EXTERIOR COMPOSITE SIDING	AZEK	COMPOSITE DECKING SQUARE SHOULDERED CAPPED, 5.5" w. X 1", HARVEST COLLECTION, ISLAND OAK	NAIL OR SCREW PVC PLANKS TO WOOD SUPPORTS, PER MANUF. REQUIREMENTS.	AZEK BUILDING PRODUCTS P: (877) 275-2935
12	EXTERIOR METAL	BENJAMIN MOORE	COROTECH POLYESTER URTHANE CUSTOM MATCH BENJAMIN MOORE 2086-10 EXOTIC RED (V520)		
13	EXTERIOR MASONRY	BENJAMIN MOORE	COROTECH POLYESTER URTHANE CUSTOM MATCH BENJAMIN MOORE 2132-30 BLACK HORIZON (V520)		

EXTERIOR FINISH SCHEDULE **F**

IMAGE COMPONENTS SCHEDULE			
SIGNAGE	TAG	QTY	ITEM DESCRIPTION
	S1a	1	VINYL LOGO/GRAPHICS FOR TOWER PANEL - FULL HT.
	S1b	0	VINYL LOGO/GRAPHICS FOR TOWER PANEL - HALF HT.
	S3a	0	KFC CHANNEL LETTERS - 30" RED
	S3b	2	KFC CHANNEL LETTERS - 24" RED
	S3c	0	KFC CHANNEL LETTERS - 30" WHITE
	S3d	0	KFC CHANNEL LETTERS - 24" WHITE
	S4a	1	"REAL MEALS TO GO" DIMENSIONAL LETTERS FOR 15' DT CANOPY
	S4b	0	"REAL MEALS TO GO" VINYL LETTERS FOR 8' DT CANOPY
	S5a	1	"WORLD FAMOUS CHICKEN" LETTERS - 16" DIMENSIONAL PIN MOUNT
	S5b	0	"WORLD FAMOUS CHICKEN" 16" LETTERS - PAINT
	S5c	0	"WORLD FAMOUS CHICKEN" 12" LETTERS - PAINT
	S5d	0	"WORLD FAMOUS CHICKEN" STACKED LETTERS - PAINT
	S6	0	"REAL MEALS" BUCKET SIGN
	S7	0	"REAL MEALS TO GO" BUCKET SIGN
	S8a	1	"HARD WAY" PAINT TEMPLATE - 57" ROUND
	S8d	1	"HARD WAY" PAINT TEMPLATE - HORIZONTAL
	S9	1	"HOT FRESH ARROW SIGN"
	S15b	1	"HOT FRESH ARROW SIGN"
	G9a	2	STORE HOURS - ENTRY DOOR
	G9b	1	STORE HOURS - DT WINDOW
	G9c	1	STORE HOURS - DT SPEAKER POST/CANOPY
BUILDING EXTERIOR ELEMENTS			
	B1a	1	TOWER PANEL W/ HALF HT LOGO (NO GRAPHICS)- FULL HT W/ EXTENDER
	B1b	0	TOWER PANEL W/ LOGO AND GRAPHICS - HALF HT
	B2	0	TOWER LID CANOPY
	B3a	1	DT WINDOW CANOPY - 15'-0" WIDE
	B9a	5	SHUTTERED AWNINGS - 5'-0" WIDE, 4'-6" HT
	B9b	1	SHUTTERED AWNINGS - 6'-4" WIDE, 4'-6" HT
	B9a-DT	2	SHUTTERED AWNINGS - 5'-0" WIDE, 4'-0" HT

IMAGE COMPONENTS SCHEDULE **D**

MISCELLANEOUS:
A. SEE SHEET A1.1 "WINDOW TYPES" FOR WINDOW ELEVATIONS.
B. PAINT COLORS SHOWN ARE COLOR REFERENCES FOR THE E.I.F.S. SUPPLIER.

SEALERS (REFER TO SPECS):
A. SEALANT AT ALL WALL AND ROOF PENETRATIONS.
B. SEALANT AT ALL WINDOW AND DOOR FRAMES AT HEAD AND JAMB. DO NOT SEAL SILL AT WINDOWS.

HIGH IMPACT E.I.F.S.:
A. AS REQUIRED PER SITE-SPECIFIC DESIGN:
E.I.F.S. BASE COAT W/ 20 OZ. HIGH IMPACT MESH TO BE APPLIED FROM STARTER TRACK TO 7'-0" A.F.F. REFER TO SPECIFICATION MANUAL FOR E.I.F.S. MANUFACTURER'S ASSEMBLY DETAILS.

CRITICAL FINISH OPENINGS:
BUILDING FINISH OPENINGS THAT ARE DESIGNATED AS "CRITICAL" SHALL BE MAINTAINED TO PROVIDE FOR THE STANDARD INSTALLATION OF STANDARD SIGNAGE / BUILDING ELEMENTS. SEE GENERAL NOTE FOR "VENDOR PROVIDED / VENDOR INSTALLED ELEMENTS".

THIN BRICK INSTALLATION:
THE GENERAL CONTRACTOR TO ENSURE THAT THE BRICK JOINTS ARE PLUMB AND LEVEL, AND THE BRICK FACES ALIGNED AND FLUSH.

VENDOR SUPPLIED / INSTALLED ELEMENTS:
GC TO COORDINATE WITH VENDOR PROVIDED / VENDOR INSTALLED SIGNAGE AND BUILDING ELEMENTS.

SIGNAGE:
PER ORDINANCE NO. O-127-2015 OF THE CITY OF KNOXVILLE, TN: ORDINANCE MAX SF 200 SIGNS PER TENANT SPACE WITH 189 SF TOTAL

NUMBER OF SIGNS: 4
SIGNAGE SF: 189 SF

GENERAL NOTES **C**

- 1 PAINT WALL SURFACE BEHIND NEW AWNING
- 2 PRE-FINISHED METAL LOUVERED AWNINGS (AWNINGS ABOVE DOORS TO HAVE RAIN DIVERTERS)
- 3 PARAPET FASCIA CAP.
- 4 WALL PACK LIGHT
- 5 ALUMINUM STOREFRONT WINDOW / DOOR SYSTEM. SEE SHEET A1.1.
- 6 WALL LIGHTING - LIGHTING VENDOR SUPPLIED / GC INSTALLED. SEE SHEET E4.0.
- 7 STO CORP. 1" DRAINABLE E.I.F.S. REFER TO SPECIFICATIONS MANUAL FOR MANUFACTURER'S ASSEMBLY DETAILS, FIELD SUPPORT SERVICES AND CONTACTS. REFER TO DETAILS, SHEET A6.3. SEE HIGH IMPACT E.I.F.S. GENERAL NOTE.
- 8 HOSE BIB - REFER TO DETAIL 5 / A6.2.
- 9 CO2 FILLER VALVE & COVER. SEE DETAIL 11/A6.2
- 10 SCUPPER, COLLECTOR AND DOWNSPOUT 6" MIN.
- 11 SWITCHGEAR.
- 12 INDICATES TOP OF ROOF DECK.
- 13 DRIVE THRU WINDOW. SEE SHEET A2.1
- 14 GAS METER. DO NOT PAINT METER.
- 15 STEEL BOLLARD W/ PVC SLEEVE. SEE SITE DETAILS.
- 16 TOP OF RTU. COORDINATE WITH MANUFACTURER'S SPECIFICATIONS.
- 17 EXHAUST FANS ON ROOF.
- 18 BRICK SILL.
- 19 TRANSITION FROM THIN BRICK -to- E.I.F.S.
- 20 THIN BRICK RUNNING BOND
- 21 LINE OF PAINT COLOR CHANGE.
- 22 1/2" GROOVE IN E.I.F.S. SEE DETAIL 14 / A6.2.
- 23 ROOF ACCESS LADDER. SEE DETAIL 14 & 15/ A6.3
- 24 THRU WALL OVERFLOW STORM DRAINAGE
- 25 STAINLESS STEEL CORNER GUARDS.
- 26 HANDICAP SIGNAGE; MOUNT AT 5'-0" A.F.F.
- 27 SECURITY DOOR. OWNER-SUPPLIED / G.C. INSTALL.
- 28 EMERGENCY LIGHT PER ELECTRIC
- 29 AZEK COMPOSITE SIDING FENCE BY G.C.
- 30 DOOR BY COOLER MANUFACTURER TO MATCH SECURITY DOOR FUNCTION AND HARDWARE INCLUDING VIEW PANEL.

NOTE: NOT ALL KEY NOTES APPLY TO THIS SHEET **KEY NOTES** **B**

LIS
ARCHITECTURE
ENGINEERING

ENGINEERING OFFICE
21430 Palm Beach Blvd.
Ave. Fla. 33920
Phone: (239) 693-9244
facsimile: (239) 693-9828

LAND INVESTMENT SERVICES, LLC
AA 26002040 CA NO: 6853 LB1057

ARCHITECTURE / ENGINEERING OFFICE
10000 Rockledge Blvd.
Suite 2004, Rockledge, FL 32765
Phone: (321) 244-0402
facsimile: (321) 244-9419


HAROLD DANIEL HUTTER III
FL. REG. AR98813

PLAN SET REVISIONS:

- △
- △
- △
- △
- △
- △
- △
- △
- △

CONTRACT DATE: 12-18-2019
BUILDING TYPE: Kb 30-19
PLAN VERSION: 2018.A
SITE NUMBER:
ENTITY NUMBER:
STORE NUMBER:
LIS PROJECT: 2019-303

KFC
OAKLEAF CORNER OUTPARCEL 3
DUVAL COUNTY, FL



Kb 30-19

**EXTERIOR
ELEVATION**

A4.0

PLOT DATE: 01/17/2020