

**PANEL BOARD SCHEDULE NO. 'A'**

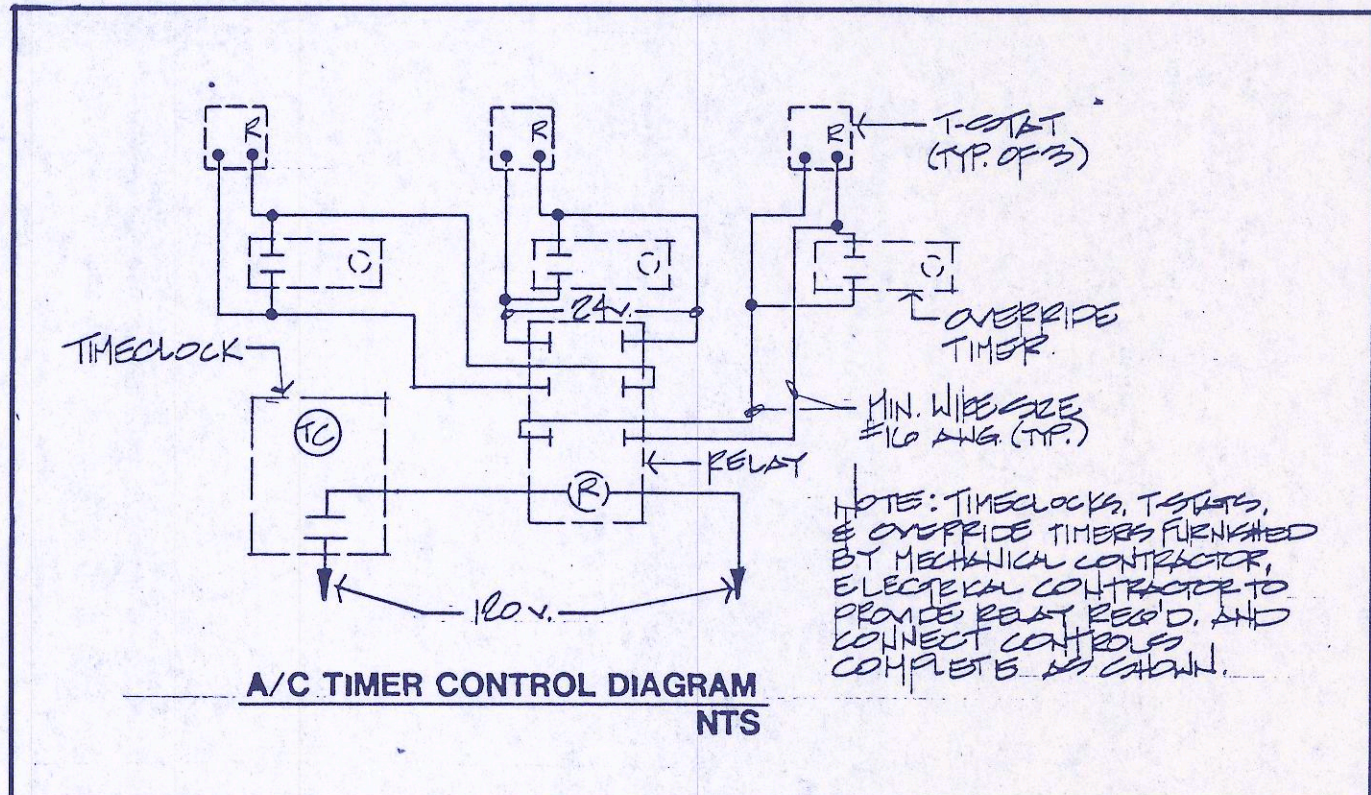
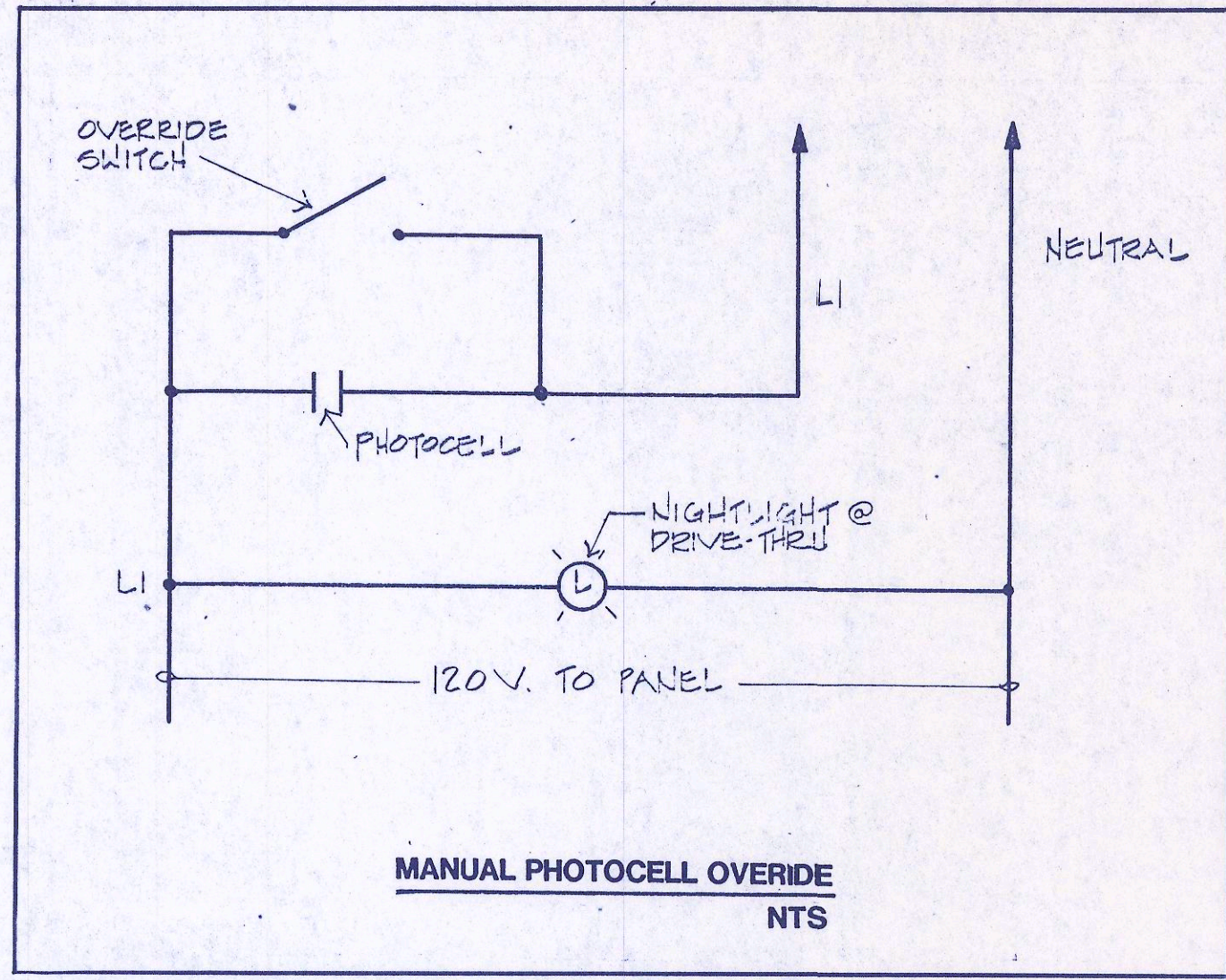
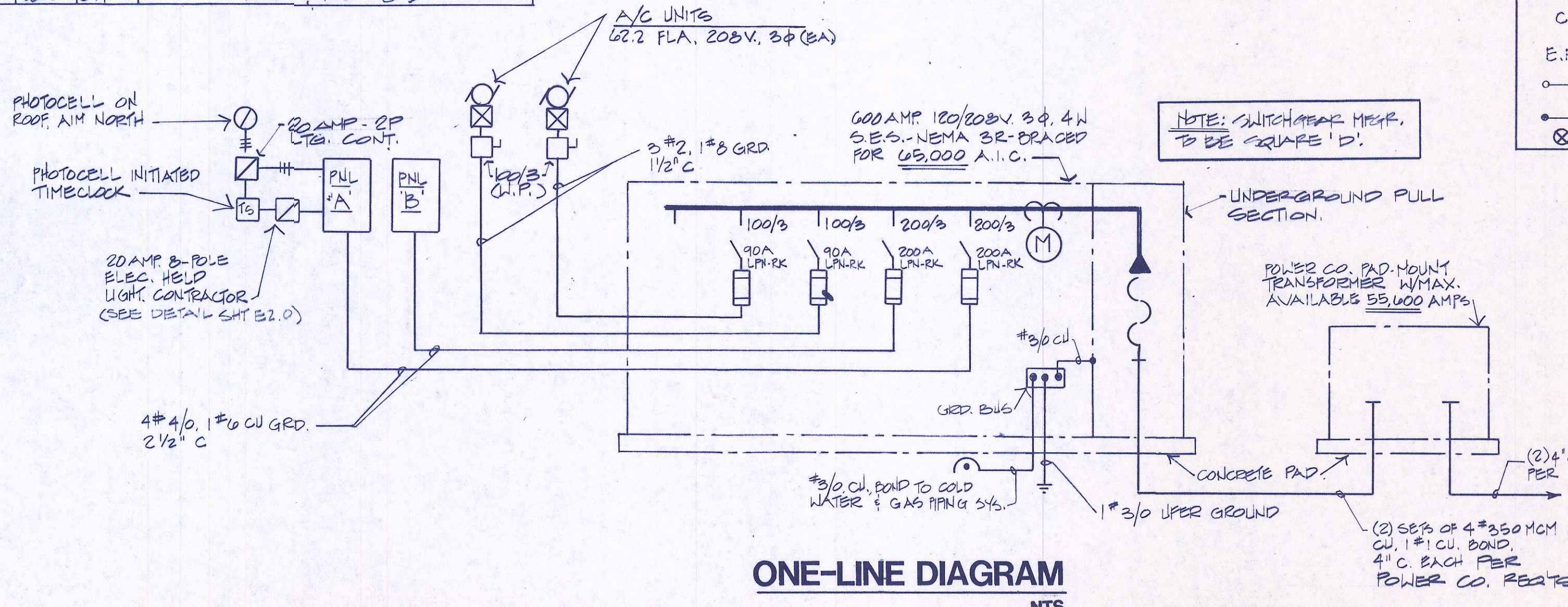
TYPE: PLUG-ON	MOUNTING: SURFACE	VOLTAGE: 120/208V 3φ 4W	MAINS: 225A MLO.
USE AND/OR AREA SERVED	CIR NO	LOAD	USE AND/OR AREA SERVED
LIGHTING - LOBBY	1	1250	SITE LTG. (NL)
- OFFICES	3	1150	SITE SIGNAGE
- WORK AREA	5	1000	
- TELLER LINE	7	1250	BLDG. LTG. (NL)
- COVE	9	1200	SPARE
- LOUNGE, ELEC. RM.	11	1500	
- VAULT, BOOTHS	13	1250	
- CONF. ATM, ACCOUNT	15	1750	
- DRIVE-THRU CANOPY	17	500	
- OPEN/CLOSE SIGNS	19	1000	
SPACE	21	400	DRIVE-THRU AUDIO
	23	900	KIOSK BLOWERS
	25	900	
	27	900	
	29	900	
	31	900	
	33	900	
	35	900	
	37	500	
C.U. & F.C. UNITS	39	1100	
	41	1000	
TOTAL LOAD PER PHASE		11050	12408
		12208	12408
			12408 ÷ 120 = 104 AMPS

**PANEL BOARD SCHEDULE NO. 'B'**

TYPE: PLUG-ON	MOUNTING: SURFACE	VOLTAGE: 120/208V 3φ 4W	MAINS: 225A MLO.
USE AND/OR AREA SERVED	CIR NO	LOAD	USE AND/OR AREA SERVED
RECEPTS - T.M.B.	1	120	RECEPTS - TELLERLINE
LTG. CONTROL CABINET	3	200	
RECEPTS - JAN., LOUNGE	5	540	DED.
- GEN.	7	540	
- TOILET RMS.	9	540	DED.
- FLOOR	11	540	
	13	540	DED.
	15	540	
	17	540	DED.
	19	540	
- C.F.U. ATM ROOM	21	720	- BACK COUNTER
- MODEM	23	720	- C.P.U. - TELLER
- ATM ROOM (DED)	25	500	- ACCOUNTS
- NIGHT DEPOSIT	27	500	- DRIVE-THRU TELLER
- SECURITY SYST.	29	500	DED.
- VIDEO MONITOR	31	500	- LOUNGE REF.
SPACE	33	500	COUNTER
	35	500	
	37	500	
	39	200	- & LTS - MECH YARD
	41		SPACE
TOTAL LOAD PER PHASE		7600	5800
		6140	7600 ÷ 120 = 63 AMPS

**PANEL SCHEDULE NOTES**

- \*CONTINUOUS DUTY/LARGEST MOTOR X 125%
- PROVIDE HANDLE LOCK-ON DEVICE
- ▲ CIRCUIT PHOTOCELL ON - PHOTOCELL OFF
- ◆ CIRCUIT PHOTOCELL ON - TIMECLOCK OFF



**ELECTRICAL LOAD SUMMARY**

PANEL 'A' CONNECTED LOAD = 104.0 AMPS  
 PANEL 'B' CONNECTED LOAD = 63.0 AMPS  
 A/C #1 @ 125% = 77.8 AMPS  
 A/C #2 @ 100% = 62.2 AMP  
 TOTAL = 307.0 AMPS

- ELECTRICAL SYMBOL SCHEDULE**  
(NOT ALL SYMBOLS SHOWN MAY BE USED)
- FLUORESCENT FIXTURE
  - WALL MOUNTED LIGHT FIXTURE - SEE FIXTURE SCHEDULE FOR HEIGHT
  - CEILING OUTLET
  - INDICATES FIXTURE WITH UNSWITCHED BALLAST ON EMERGENCY
  - DUPLEX CONVENIENCE OUTLET MOUNTED AT +14" OR AS NOTED
  - DUPLEX CONVENIENCE OUTLET MOUNTED AT +48" ABOVE COUNTER VERIFY EXACT MOUNTING HEIGHT WITH ARCHITECTURAL ELEVATIONS
  - SPECIAL OUTLET AS NOTED ON DRAWINGS
  - DOUBLE DUPLEX (FOURPLEX) RECEPTACLE AT +14" OR AS NOTED
  - TELEPHONE OUTLET AT +14" OR AS NOTED. FURNISH (1) 3/4" CONDUIT WITH PULL WIRE TO TELEPHONE MOUNTING BOARD OR AS NOTED
  - DATA OUTLET AT +14" OR AS NOTED WITH TELEPHONE TYPE COVERPLATE AND CONDUIT AS NOTED
  - DEDICATED 15 AMP, 120V., 3 WIRE CIRCUIT WITH ISOLATED GROUND. PROVIDE "HUBBELL" #IG-5261 ORANGE RECEPTACLE AT +14" OR AS NOTED.
  - COMBINATION POWER, TELEPHONE AND DATA 3-GANG FLUSH FLOOR BOX - "WALKER" #858LCK BOX, WITH #858-CP BRASS CARPET FLANGE.
  - DOUBLE DUPLEX (4-PLEX) RECEPTACLE AT +14" OR AS NOTED WITH ISOLATED GROUND - "HUBBELL" #IG-5261 RECEPTACLES.
  - JUNCTION BOX IN ACCESSIBLE LOCATIONS
  - JUNCTION BOX IN ACCESSIBLE LOCATION WITH FLEXIBLE CONDUIT CONNECTION TO LIGHT FIXTURE OR AS NOTED
  - PHOTOCELL ON ROOF (AIM NORTH) - "TORK" #2100
  - PHOTOCELL INITIATED TIMERSWITCH - "TORK" #7200 OR "INTERMATIC" #T173
  - INDICATES CIRCUIT IN CONDUIT RUN IN FLOOR OR UNDER GROUND
  - INDICATES CIRCUIT ON CONDUIT CONCEALED IN WALLS OR ABOVE CEILING
  - INDICATES HOMERUN TO PANELBOARD OR AS NOTED
  - PANELBOARD - MOUNT AT +6'-0" TO TOP
  - DISCONNECT SWITCH - SIZE AND FUSES AS PER MANUFACTURERS RECOMMENDATIONS (WEATHERPROOF WHERE OUTSIDE)
  - MOTOR CONTROLLER - FURNISHED WITH MOTOR
  - MOTOR CONTROLLER - FURNISHED AND INSTALLED BY ELECTRICAL CONTRACTOR. SEE FLOOR PLANS FOR SIZE AND SPECIFICATIONS FOR DESCRIPTION
  - CLOCK OUTLET AT HEIGHT NOTED
  - MOTOR - SIZE AS INDICATED ON DRAWINGS
  - GFCI: GROUND FAULT CIRCUIT INTERRUPTOR
  - SIGNAL PUSHBUTTON AT +52" - "EDWARDS" #852 AND "HUBBELL" #1750 W.P. PLATE
  - SIGNAL BUZZER - "EDWARDS" #340A-G5
  - SIGNAL TRANSFORMER MOUNTED IN ACCESSIBLE LOCATION - "EDWARDS" #991
  - SINGLE POLE SWITCH MOUNTED AT +52" OR AS NOTED
  - 3-POSITION, 2-POLE, OPEN/CLOSE/CENTER-OFF SWITCH AT +52"
  - THREE WAY SWITCH MOUNTED AT +52" OR AS NOTED
  - H.P. RATED MANUAL MOTOR STARTER (W.P. WHERE OUTSIDE)
  - INCANDESCENT DIMMER AT +52" OR AS NOTED (1500 WATTS UNLESS OTHERWISE NOTED)
  - W.P. WEATHER PROOF (RAINTIGHT)
  - S.E.S. SERVICE ENTRANCE SECTION
  - E.D.F. ELECTRIC DRINKING FOUNTAIN
  - C. CONDUIT
  - E.F. EXHAUST FAN - 150 WATT, 120V. UNLESS OTHERWISE NOTED
  - INDICATES CONDUIT TURNING UP
  - INDICATES CONDUIT TURNING DOWN
  - EXIT SIGN - SEE LIGHTING FIXTURE SCHEDULE.

- NOTE:**
- ALL COVERPLATES TO BE STAINLESS STEEL - COVERPLATES FOR TELE., DATA & SECURITY TO HAVE 3/8" GROMMET.
  - PROVIDE ALL EMPTY CONDUITS WITH PULL LINE.

ALL CONCEPTS, DESIGNS, AND DATA INDICATED ON THESE DOCUMENTS ARE THE SOLE PROPERTY OF PETERSON ASSOCIATES, ENGINEERS, INC. AND SHALL NOT BE USED FOR ANY OTHER PURPOSE THAN ORIGINALLY INTENDED WITHOUT THE WRITTEN PERMISSION OF THE ENGINEER.

**PETERSON ASSOCIATES**  
CONSULTING ENGINEERS, INC.

1717 East Morten, Suite 100  
Phoenix, Arizona 85020  
602-943-4116  
Job No. 888755