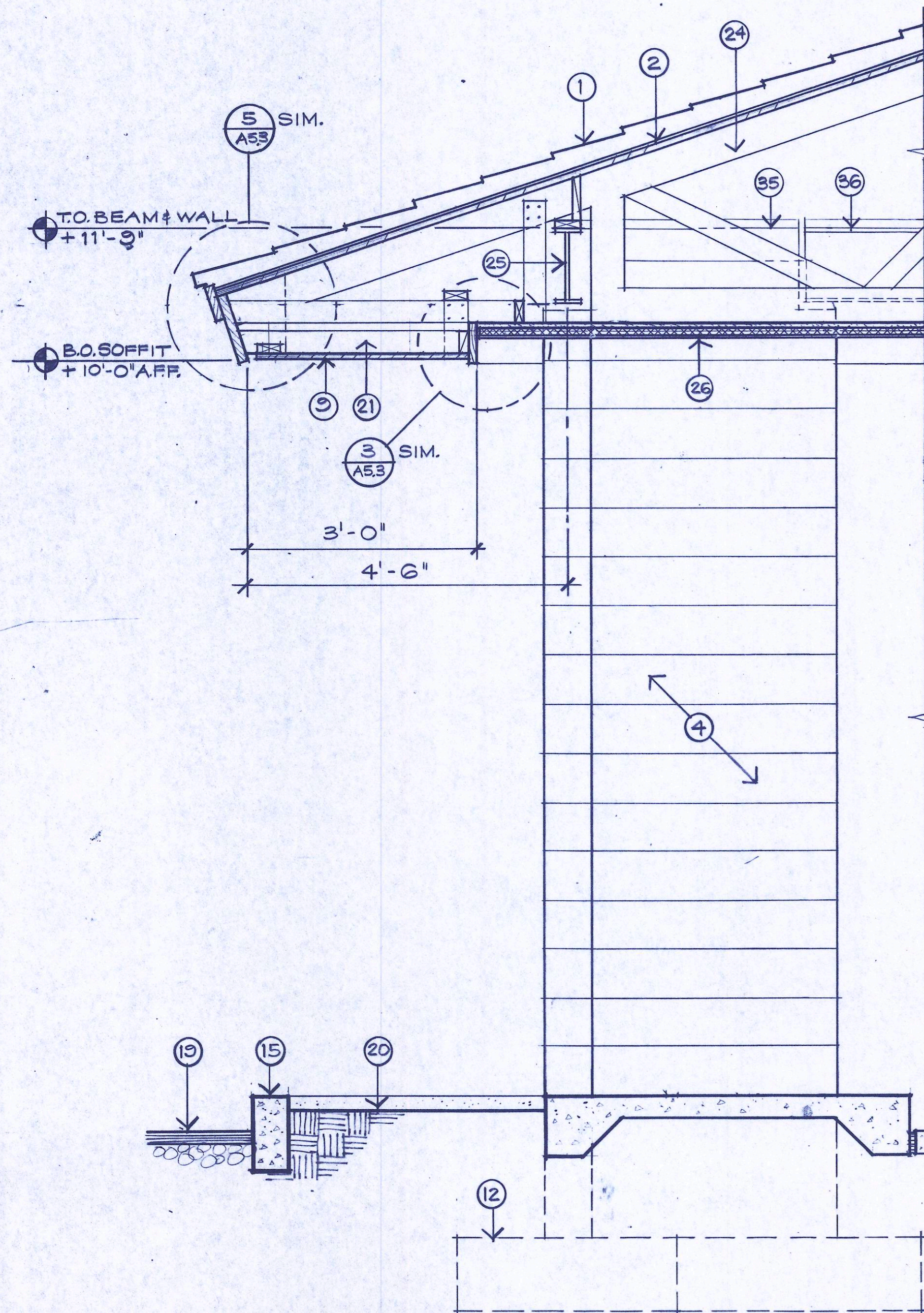
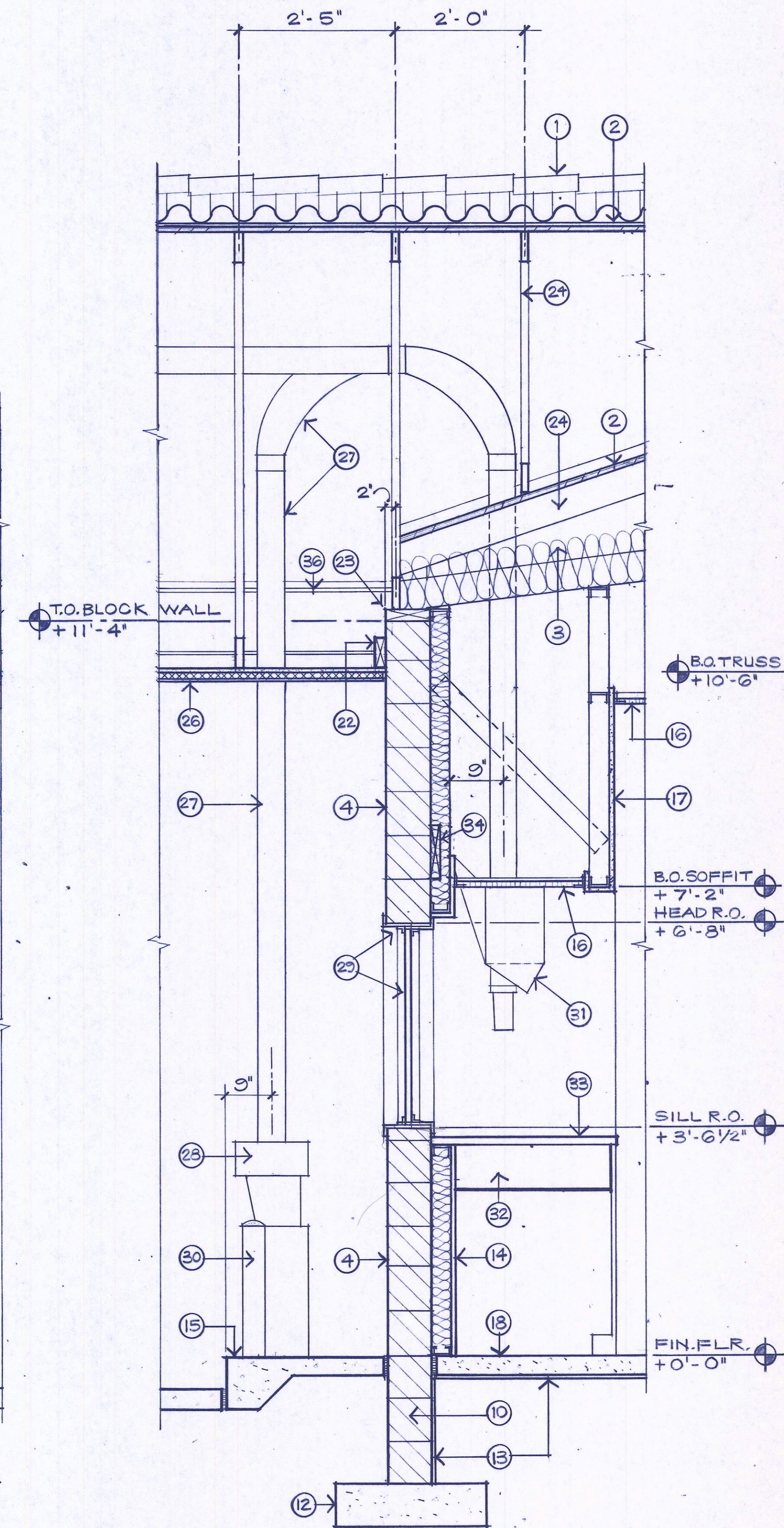


KEYNOTES

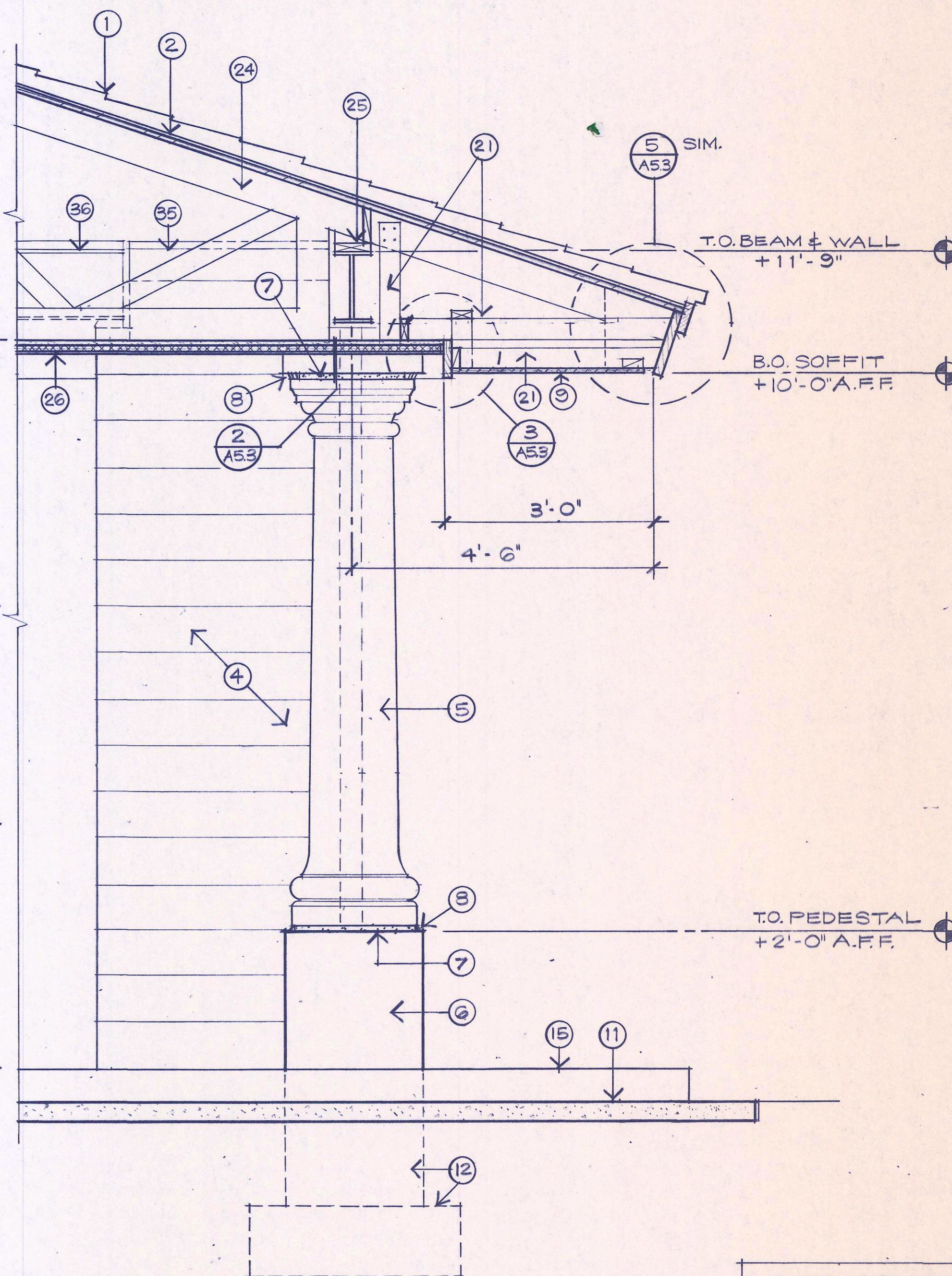
1. CLAY TILE ROOFING OVER 2-PLY FELTS.
2. ROOF PLYWOOD - REFER TO STRUCTURAL.
3. R-30 BATT INSULATION.
4. 8" SLUMP BLOCK MASONRY - SEE GENERAL NOTES FOR FINISH.
5. PRECAST CONCRETE COLUMN.
6. CAST-IN-PLACE CONCRETE PEDESTAL - FINISH TO MATCH PRECAST COLUMNS.
7. NON-SHRINK GROUT.
8. SEALANT.
9. T1-11 SIDING - STAINED PER GENERAL NOTES.
10. 8" SLUMP BLOCK MASONRY STEMWALL.
11. 4" FIBERMESH CONCRETE OVER 6" ABC.
12. CONCRETE FOOTING - SEE STRUCTURAL.
13. VAPOR BARRIER.
14. 5/8" GYP. BD. OVER 3 5/8" METAL STUDS WITH 3" BATT INSULATION BETWEEN STUDS.
15. 6" CONCRETE CURB.
16. 2 X 2 LAY-IN ACOUSTICAL CEILING.
17. 5/8" GYP. BD. OVER 3 5/8" METAL STUDS.
18. 4" CONCRETE SLAB OVER 6" ABC.
19. 2" ASPHALT OVER 6" ABC.
20. PLANTING AREA - SEE LANDSCAPE PLAN.
21. 2 X 4 WOOD FRAMING AT 24" A.C. WITH 16D NAILS - (4) EACH CONNECTION.
22. CONTINUOUS 2 X WOOD LEDGER.
23. CAP BLOCK AND BLOCKING - SEE STRUCTURAL.
24. WOOD TRUSSES - SEE STRUCTURAL.
25. STEEL BEAM AND CONTINUOUS BLOCKING - SEE STRUCTURAL.
26. EXTERIOR FINISH SYSTEM OVER 1/2" EXTERIOR GYP. BD. SHEATHING.
27. DRIVE-UP PNEUMATIC TUBE PER BANK EQUIPMENT SUBCONTRACTOR.
28. DRIVE-UP KIOSK PER BANK EQUIPMENT SUBCONTRACTOR.
29. BULLET-RESISTANT FRAME AND GLASS PER BANK EQUIPMENT SUBCONTRACTOR.
30. CONCRETE-FILLED METAL BOLLARD 4" DIA. PER GENERAL CONTRACTOR - VERIFY SPACING WITH OWNER.
31. DRIVE-UP TELLER TERMINALS PER BANK EQUIPMENT SUBCONTRACTOR.
32. UNDER COUNTER BANK EQUIPMENT PER BANK EQUIPMENT SUBCONTRACTOR.
33. PLASTIC LAMINATE COUNTERTOP.
34. 2 X 10 WD. BACKING THE FULL LENGTH OF WINDOW.
35. TOP OF WALL BEYOND.
36. STEEL BEAM BEYOND - REFER TO STRUCTURAL.



4 WALL SECTION
SCALE 3/4" = 1'-0"



5 WALL SECTION
3/4" = 1'-0"



6 WALL SECTION
3/4" = 1'-0"

NOTE: VERIFY DRIVE-UP WINDOW AND ATM OPENING HEIGHTS WITH OWNER



JOB NUMBER 10434.01
DATE 11-11-88
DRAWN S.C.F.
CHECKED D.G.
SHEET TITLE

WALL SECTIONS

SCALE AS SHOWN
REVISIONS

DRAWING NUMBER
A4.2