

SCHEDULE: DOORS

FIRST FLOOR						FRAME			MISC.		SIGNAGE	
SIZE	MATERIAL	DESCRIPTION	FINISH	DESIGN	ELEV.	MATERIAL	FINISH	ELEV.	FIRE RATING	REMARKS	TYPE	LETTERING
101A	PR. 3'-0"X8'-0"X1'-3/4" W/ SIDELITE	WOOD & GLASS	CUSTOM	CUSTOM	FULL-LIFE	-	ALUM. STOREFRONT	PRE-FINISH	-	-	-	-
102A	PR. 3'-0"X8'-0"X1'-3/4" W/ SIDELITE	ALUM. STOREFRONT	ALUMINUM	PRE-FINISH	FULL-LIFE	-	ALUM. STOREFRONT	PRE-FINISH	-	-	-	-
102B	3'-0"X7'-0"X1'-3/4" W/ SIDELITE	WOOD & GLASS	CUSTOM	CUSTOM	FULL-LIFE	-	ALUM. STOREFRONT	PRE-FINISH	-	-	-	-
104A	PR. 3'-0"X8'-0"X1'-3/4" W/ SIDELITE	WOOD & GLASS	CUSTOM	CUSTOM	FULL-LIFE	-	ALUM. STOREFRONT	PRE-FINISH	-	-	-	-
106A	3'-6"X7'-0"X1'-3/4"	WOOD	STILE & RAIL	STAIN	1 PANEL (TM COBB F-20 OR EQ.)	-	WOOD	PART	-	-	-	-
106B	PR. 3'-0"X8'-0"X1'-3/4" W/ SIDELITE	WOOD & GLASS	CUSTOM	CUSTOM	FULL-LIFE	-	ALUM. STOREFRONT	PRE-FINISH	-	-	-	-
108A	PR. 3'-0"X7'-0"X1'-3/4"	WOOD	STILE & RAIL	STAIN	1 PANEL (TM COBB F-20 OR EQ.)	-	WOOD	PART	-	-	-	-
109A	3'-0"X7'-0"X1'-3/4"	WOOD	STILE & RAIL	STAIN	1 PANEL (TM COBB F-20 OR EQ.)	-	WOOD	PART	-	-	-	-
111A	3'-0"X7'-0"X1'-3/4"	HOLLOW METAL	INSUL. CORE	PAINT	FLUSH	-	METAL	PART	-	-	-	-
112A	PR. 3'-0"X7'-0"X1'-3/4"	WOOD	STILE & RAIL	STAIN	1 PANEL (TM COBB F-20 OR EQ.)	-	WOOD	PART	-	-	-	-
112B	PR. 3'-0"X7'-0"X1'-3/4"	WOOD	STILE & RAIL	STAIN	1 PANEL (TM COBB F-20 OR EQ.)	-	WOOD	PART	-	-	-	-
115A	PR. 2'-0"X10'-0"X1'-3/4"	WOOD	STILE & RAIL	STAIN	1 PANEL (TM COBB F-20 OR EQ.)	-	WOOD	PART	-	-	-	-
117A	PR. 2'-0"X7'-0"X1'-3/4"	WOOD	STILE & RAIL	STAIN	1 PANEL (TM COBB F-20 OR EQ.)	-	WOOD	PART	-	-	-	-
118A	PR. 3'-0"X7'-0"X1'-3/4"	WOOD	STILE & RAIL	STAIN	1 PANEL (TM COBB F-20 OR EQ.)	-	WOOD	PART	-	-	-	-
119A	3'-0"X7'-0"X1'-3/4"	WOOD	STILE & RAIL	STAIN	1 PANEL (TM COBB F-20 OR EQ.)	-	WOOD	PART	-	-	-	-
121A	3'-0"X7'-0"X1'-3/4" W/ SIDELITE	WOOD	STILE & RAIL	STAIN	1 PANEL (TM COBB F-20 OR EQ.)	-	WOOD	PART	-	-	-	-
122A	3'-0"X7'-0"X1'-3/4"	WOOD	STILE & RAIL	STAIN	1 PANEL (TM COBB F-20 OR EQ.)	-	WOOD	PART	-	-	-	MEN
123A	3'-0"X7'-0"X1'-3/4"	WOOD	STILE & RAIL	STAIN	1 PANEL (TM COBB F-20 OR EQ.)	-	WOOD	PART	-	-	-	WOMEN
124A	4'-0"X7'-0"X1'-3/4"	HOLLOW METAL	INSUL. CORE	PAINT	FLUSH	-	METAL	PART	-	-	-	-
126A	PR. 3'-0"X7'-0"X1'-3/4"	HOLLOW METAL	INSUL. CORE	PAINT	FLUSH	-	METAL	PART	-	-	-	-
127A	PR. 2'-0"X7'-0"X1'-3/4"	WOOD	STILE & RAIL	STAIN	1 PANEL (TM COBB F-20 OR EQ.)	-	WOOD	PART	-	-	-	-
128A	PR. 3'-0"X7'-0"X1'-3/4"	WOOD	STILE & RAIL	STAIN	1 PANEL (TM COBB F-20 OR EQ.)	-	WOOD	PART	-	-	-	-
128B	2'-0"X7'-0"X1'-3/4"	WOOD	STILE & RAIL	STAIN	1 PANEL (TM COBB F-20 OR EQ.)	-	WOOD	PART	-	-	-	-
128C	4'-0"X7'-0"X1'-3/4"	WOOD	STILE & RAIL	STAIN	1 PANEL (TM COBB F-20 OR EQ.)	-	WOOD	PART	-	-	-	-
128D	PR. 3'-0"X7'-0"X1'-3/4"	WOOD	STILE & RAIL	STAIN	1 PANEL (TM COBB F-20 OR EQ.)	-	WOOD	PART	-	-	-	-
128E	PR. 3'-0"X7'-0"X1'-3/4"	WOOD	STILE & RAIL	STAIN	1 PANEL (TM COBB F-20 OR EQ.)	-	WOOD	PART	-	-	-	-
128F	3'-6"X7'-0"X1'-3/4"	WOOD	STILE & RAIL	STAIN	1 PANEL (TM COBB F-20 OR EQ.)	-	WOOD	PART	-	-	-	-
128G	3'-6"X7'-0"X1'-3/4"	WOOD	STILE & RAIL	STAIN	1 PANEL (TM COBB F-20 OR EQ.)	-	WOOD	PART	-	-	-	-
128H	3'-0"X7'-0"X1'-3/4"	HOLLOW METAL	INSUL. CORE	PAINT	FLUSH	-	METAL	PART	-	-	-	-
131A	3'-0"X7'-0"X1'-3/4"	HOLLOW METAL	INSUL. CORE	PAINT	FLUSH	-	METAL	PART	-	-	-	-
131B	PR. 3'-0"X7'-0"X1'-3/4"	WOOD	STILE & RAIL	STAIN	1 PANEL (TM COBB F-20 OR EQ.)	-	WOOD	PART	-	-	-	-
131C	PR. 2'-6"X10'-0"X1'-3/4"	WOOD	STILE & RAIL	STAIN	1 PANEL (TM COBB F-20 OR EQ.)	-	WOOD	PART	-	-	-	-
131D	3'-0"X7'-0"X1'-3/4"	HOLLOW METAL	INSUL. CORE	PAINT	FLUSH	-	METAL	PART	-	-	-	-

DOOR SCHEDULE NOTES:

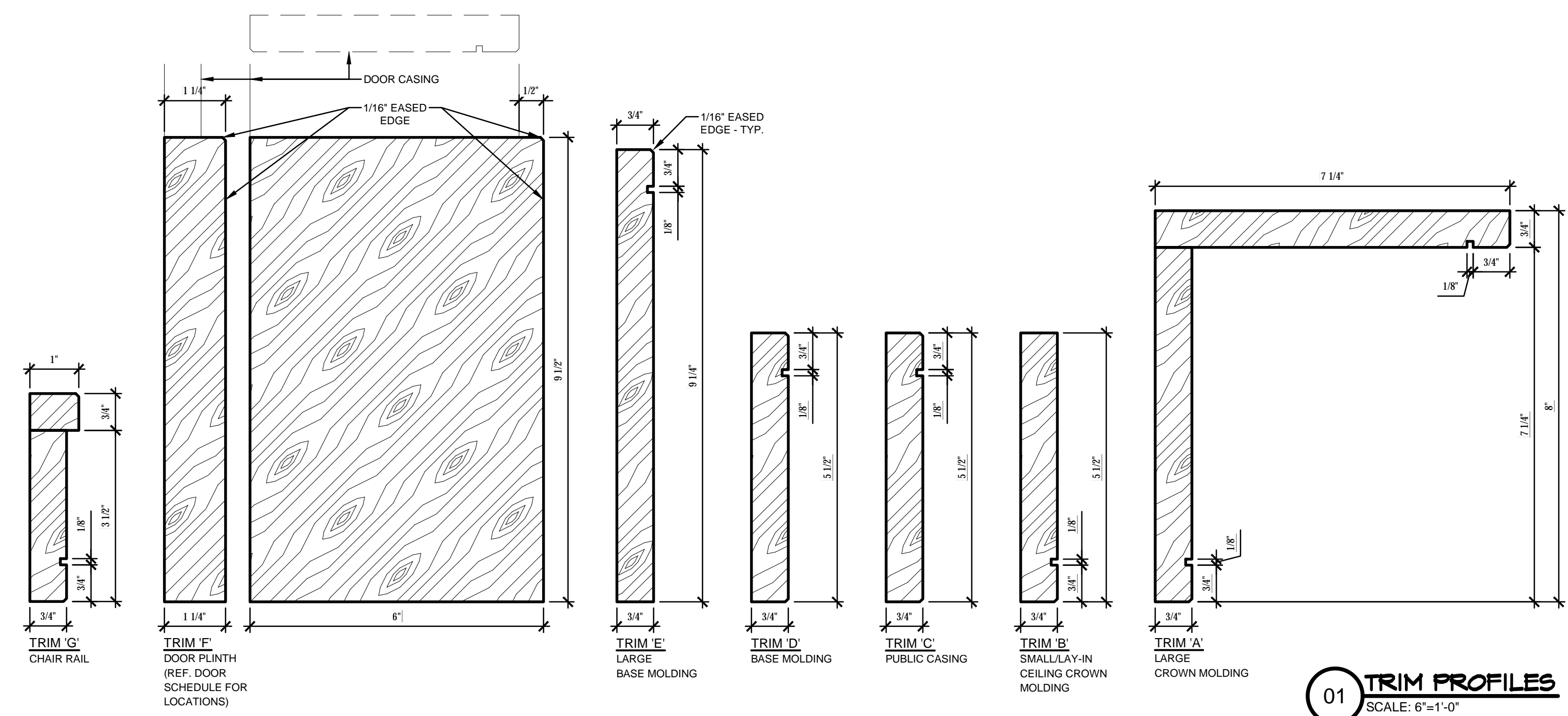
- THE FLOOR OR LANDING SHALL NOT BE MORE THAN 1/4 INCH LOWER THAN THE THRESHOLD OF THE DOORWAY. CHANGE IN LEVEL BETWEEN 1/4 INCH AND 1/2 INCH SHALL BE BEVELED WITH A SLOPE NO GREATER THAN ONE UNIT VERTICAL TO 2 UNITS HORIZONTAL.
- MAXIMUM OPENING FORCE SHALL BE 5 POUNDS.
- OPENING HARDWARE IS LOCATED BETWEEN 34" TO 44" ABOVE THE FLOOR.
- DOOR HARDWARE SHALL HAVE A SHAPE THAT IS EASY TO GRASP WITH ONE HAND AND DOES NOT REQUIRED TIGHT GRASPING, TIGHT PINCHING OR TWISTING OF THE WRIST TO OPERATE - PER CBC 1008.1.9.1.
- **DOORS THAT REQUIRE DOOR PANIC HARDWARE SHALL MEET THE CBC 1008.1.10 REQUIREMENTS.

SCHEDULE: ROOMS

FIRST FLOOR											
ROOM	FINISHES					TRIM		MISC.			
NO.	NAME	WALL	CEILING	BASE	C.M.	C.R.	CLG. HEIGHT	REMARKS			
101	PORTE COCHERE	-	-	-	-	-	12'-6" / 13'-6"	-			
102	COVERED PATIO	-	-	-	-	-	10'-0"	-			
103	PORCH	-	-	-	-	-	10'-0"	-			
104	VESTIBULE	-	-	-	A	-	13'-6"	-			
105	NOT USED	-	-	-	-	-	-	-			
106	LOBBY	-	PT / WP	E	A	-	13'-6" / 15'-0"	-			
107	CHAPEL	-	PT / WB	E	-	G	10'-0" / VAULTED	-			
108	HALL	-	PT	E	B	-	9'-0"	-			
109	STORAGE	-	22	RC	-	-	9'-0"	-			
110	NOT USED	-	-	-	-	-	-	-			
111	CATERING	-	22	RC	-	-	9'-0"	-			
112	RECEPTION	-	PT/22	E	A/B	-	10'-0" / 11'-0"	-			
113	PUBLIC LOUNGE	-	PT/22	E	A/B	-	10'-0" / 11'-0"	-			
114	STORAGE	-	22	RC	-	-	9'-0"	-			
115	PARTITION CLOSET	-	PT	RC	-	-	12'-0"	-			
116	STORAGE	-	22 / PT	D	-	-	9'-0"	-			
117	HALL	-	22 / PT	D	B	-	9'-0"	-			
118	ARRANGEMENT	-	22/PT	A	A/B	-	10'-0" / 11'-0"	-			
119	STORAGE	-	22	RC	-	-	9'-0"	-			
120	NOT USED	-	-	-	-	-	-	-			
121	OFFICE	-	22	D	B	-	10'-0"	-			
122	MEN	-	22	CT	B	-	8'-6"	-			
123	WOMEN	-	22	CT	B	-	8'-6"	-			
124	PREP ROOM	-	22	EPOX	-	-	9'-0"	-			
125	NOT USED	-	-	-	-	-	-	-			
126	STORAGE / SERVICE AREA	-	PT	RC	-	-	12'-0"	-			
127	VISITATION	-	22/PT	A	A/B	-	9'-0" / 10'-0"	-			
128	HALL	-	PT	D	B	-	9'-0"	-			
129	AV EQUIPMENT	-	FRM	RC	-	-	12'-0"	-			
130	STORAGE	-	PT	D	-	-	9'-0"	-			
131	VISITATION	-	22/PT	E	A/B	-	10'-0" / 11'-0"	-			
132	STORAGE	-	22	D	-	-	9'-0"	-			
133	MEZZANINE	-	GYP	-	-	-	SLOPED	-			
134	MEZZANINE	-	GYP	-	-	-	SLOPED	-			
135	NOT USED	-	-	-	-	-	-	-			

FLOORS	WALLS	CEILING	TRIM
COS CONCRETE SEALED	STO STONE	STU STUCCO	A LARGE CROWN MOLDING
CSS CONCRETE STAMPED PATTERN & SEALED	STU STUCCO	FRM EXPOSED ATTIC FRAMING	B LAY-IN CEILING CROWN MOLDING
SC DIAMOND POLISHED STAINED CONCRETE	CT1 WALL TILE - WAINSCOT (USE MATCHING BULL NOSE)	PT PAINT ON GYP. BD.	C PUBLIC CASING
CP1 CARPET - PUBLIC	FRP-FH FRP BOARD - FULL HEIGHT	PS PLASTER SOFFIT SYSTEM	D PUBLIC DOOR HEADER
CP2 CARPET - SERVICE	FRP-W FRP BOARD - WAINSCOT	WB STAINED WOOD BEAM	E LARGE BASE MOLDING
CT1 CERAMIC TILE - PUBLIC	FRM EXPOSED FRAMING	WP STAINED T&G WOOD PLANK CEILING	F BASE MOLDING
CT2 CERAMIC TILE - SERVICE	PT1 PAINT	22 2X2 ACOUSTICAL LAY-IN - ARMSTRONG FINE	G SERVICE CASING / BASE MOLDING
EPOX STONEHARD - STONETEC EPOXY	PT2 PAINT - EPOXY	24 2X4 ACOUSTICAL LAY-IN - ARMSTRONG FINE	H DOOR PLINTH
FRM EXPOSED FRAMING	RR RUBBER RUB RAIL @36" TO CENTER	24V 2X4 VINYL FACED ACOUSTICAL LAY-IN	WT 1X6 TRIM TO MATCH STAINED WOOD BEAMS
MED MEDICAL FLOORING (PROVIDED BY DST)	WC1 WALLCOVERING - ABOVE TILE		CTCB PORCELAIN TILE COVE BASE - TO MATCH FLOOR
PD PLYWOOD DECKING	WC2 WALLCOVERING - FULL HEIGHT		RC 4" RUBBER COVE BASE
VCT VINYL COMPOSITION TILE	WP WOOD PANELS W/ WALLCOVERING		RR 8" RUBBER RUB RAIL
VT VINYL PREFORMED STAIR TREADS	WCPT WALL CARPET WAINSCOT		EPOX 4" INTEGRAL EPOXY BASE - STONTEC
NOTE: PROVIDE APPROPRIATE SCHLUTER TRANSITION STRIPS BETWEEN CONCRETE / CARPET / TILE			

P:\2016 PROJECTS\16238_LJ_Giffin_Funeral Home\Architecture\Phase 2\A2.0 Schedules.dwg\A2.0 Room Schedule & Trim Profiles by Chris Chiles at 3/27/2017 3:14:37 PM web...JST Full Pen Weight.ctb pld style



01 TRIM PROFILES
SCALE: 6"=1'-0"

ISSUE DATE:
FEBRUARY 13, 2017

REVISION:

NOT FOR CONSTRUCTION

THIS SET OF DOCUMENTS ARE FOR REVIEW AND COST ESTIMATION ONLY

JST ARCHITECTS
ARCHITECTURE | PLANNING | INTERIORS | CEMETERY INTERIORS
WWW.JSTARCHITECTS.COM
J. STUART TODD, INC.
2919 WELBORN STREET, SUITE 101, DALLAS, TEXAS 75219 | 214.522.4033
© J. STUART TODD, INC.

PRELIMINARY DESIGN
CEMETERY SERVICE BUILDING
MILILANI MEMORIAL PARK
PEARL CITY, HAWAII

SHEET NO.
A2.0
JOB NUMBER: 16233

