

REFER TO ARCHITECTURAL DRAWING X-1710-K101 FOR ADDITIONAL INFORMATION AND COORDINATION.

Item (No)	Qty	Equipment Category
1	4	Fryer, Deep Fat, Gas
2	1	Oven, Convection, Electric
3	1	Sink, Scullery, 3 Compartments
4	1	Refrigerator, Undercounter
5	3	P.O.S.
6	1	SHEAK MACHINE
7	1	FROZEN COKE MACHINE
8	2	HEATED SANDWICH HOLDING UNIT
9	1	MAIN PREP PRODUCTION
10	1	PREP PRODUCTION
11	2	HAND SINK
12	2	VERTICAL TOASTER W/ STAND
13	1	FRY DISPENSER
14	1	FRY STATION
15	1	BROILER
16	1	BROILER HOOD
17	1	FRY HOOD
18	1	ICE MAKER W/ BIN
19	1	P.O.S. W/ STAND
20	1	ICE/SODA DISPENSER

**HOOD COORDINATION NOTES:**

- REFER TO ARCHITECTURAL DRAWING X-1710-A603 FOR ADDITIONAL INFORMATION AND DETAILS.
- FRYER HOOD AND BROILER HOOD SUPPLIED BY GC.
- 18 GAUGE CONTINUOUS STEEL WELD EA DUCT UP TO EF-1 AND EF-2.
- EXHAUST FANS EF-1 AND EF-2 SHALL DISCHARGE 40" ABOVE THE FINISHED ROOF AND SHALL BE 24" MIN FROM PARAPET OR AS PER LOCAL CODE REQUIREMENTS.

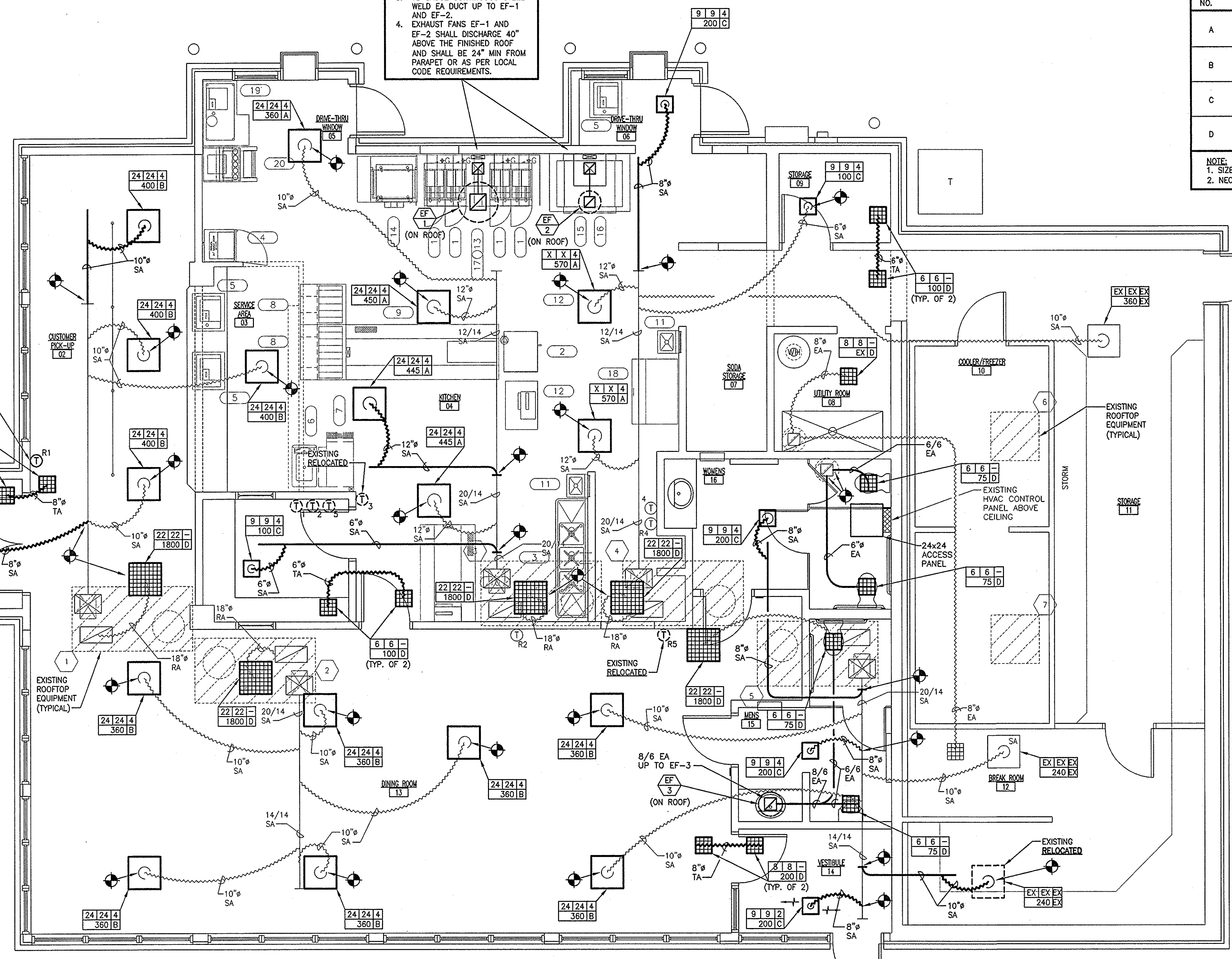
**GRILLE & DIFFUSER SCHEDULE**

MARK NO.	DESCRIPTION
A	SUPPLY AIR DIFFUSER - TITUS MODEL "PAS-AA" OR PRE-APPROVED EQUAL PERFORATED CEILING DIFFUSER. ALL ALUMINUM CONSTRUCTION, ROUND NECK, LAY-IN MOUNTED, BORDER TYPE 3, VOLUME CONTROL DAMPER D-100. FINISH: WHITE ENAMEL.
B	SUPPLY AIR DIFFUSER - TITUS MODEL TMSA-AA OR PRE-APPROVED EQUAL SQUARE CEILING, ADJUSTABLE DISCHARGE PATTERN. ALL ALUMINUM CONSTRUCTION, ROUND NECK, LAY-IN MOUNTED, BORDER TYPE 3, VOLUME CONTROL DAMPER D-100. FINISH: WHITE ENAMEL.
C	SUPPLY AIR DIFFUSER - TITUS MODEL "TDCA-AA" OR PRE-APPROVED EQUAL ALL ALUMINUM CONSTRUCTION, ROUND NECK, SURFACE MOUNTED, BORDER TYPE 1, VOLUME CONTROL DAMPER D-100. FINISH: WHITE ENAMEL.
D	RETURN OR EXHAUST AIR GRILLE-TITUS MODEL "355FL" OR PRE-APPROVED EQUAL ALL ALUMINUM CONSTRUCTION. COMPLETE WITH VOLUME CONTROL DAMPER. FINISH: WHITE ENAMEL.

NOTE:  
 1. SIZES AS INDICATED ON DRAWINGS.  
 2. NECK SIZE IS FLEX DUCT SIZE TO DIFFUSER/GRILLE ON DRAWINGS.

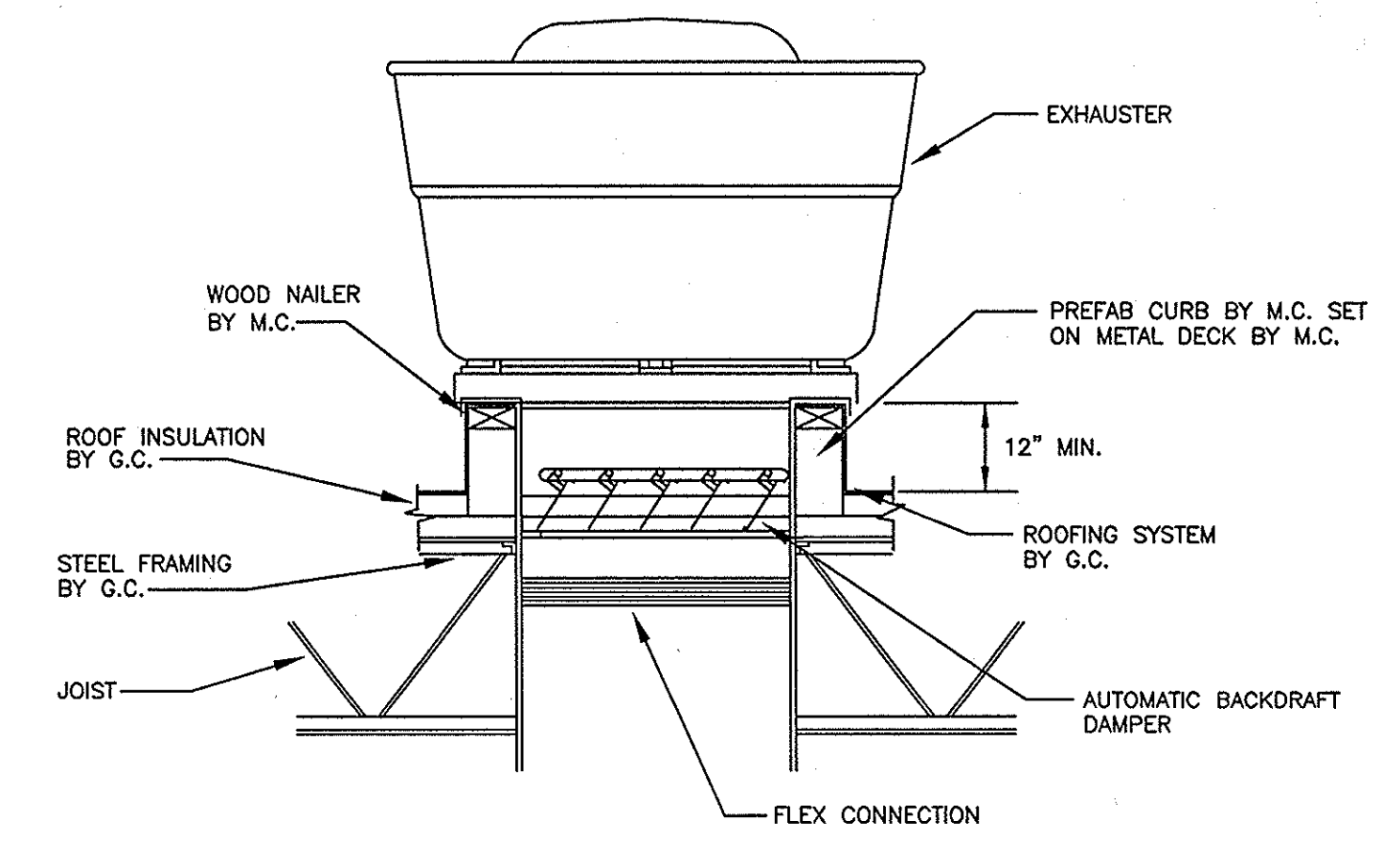
**EQUIPMENT SCHEDULE**

EF 1	EXHAUST FAN ROOF MOUNTED, UL 762 GREASE LADEN AIR, 1125 CFM @ 1.5" E.S.P., 1790 RPM, MOTOR 3/4 HP, 208V/1PH/60HZ. BELT DRIVE. HINGED BASE. GREASE CAPTURE AND CONTAINMENT SYSTEM AND ASSOCIATED PVC PIPING AND FITTINGS. LOREN COOK VCR-150 OR PRE-APPROVED EQUAL.
EF 2	EXHAUST FAN ROOF MOUNTED, UL 762 GREASE LADEN AIR, 1100 CFM @ 1.5" E.S.P., 1790 RPM, MOTOR 3/4 HP, 208V/1PH/60HZ. BELT DRIVE. HINGED BASE. GREASE CAPTURE AND CONTAINMENT SYSTEM AND ASSOCIATED PVC PIPING AND FITTINGS. LOREN COOK VCR-150 OR PRE-APPROVED EQUAL.
EF 3	EXHAUST FAN ROOF MOUNTED, 150 CFM @ 0.25" E.S.P., 1550 RPM, MOTOR 1/20 HP, 120V/1PH/60HZ. DIRECT DRIVE. LOREN COOK ACRUD-70R15DH OR PRE-APPROVED EQUAL.

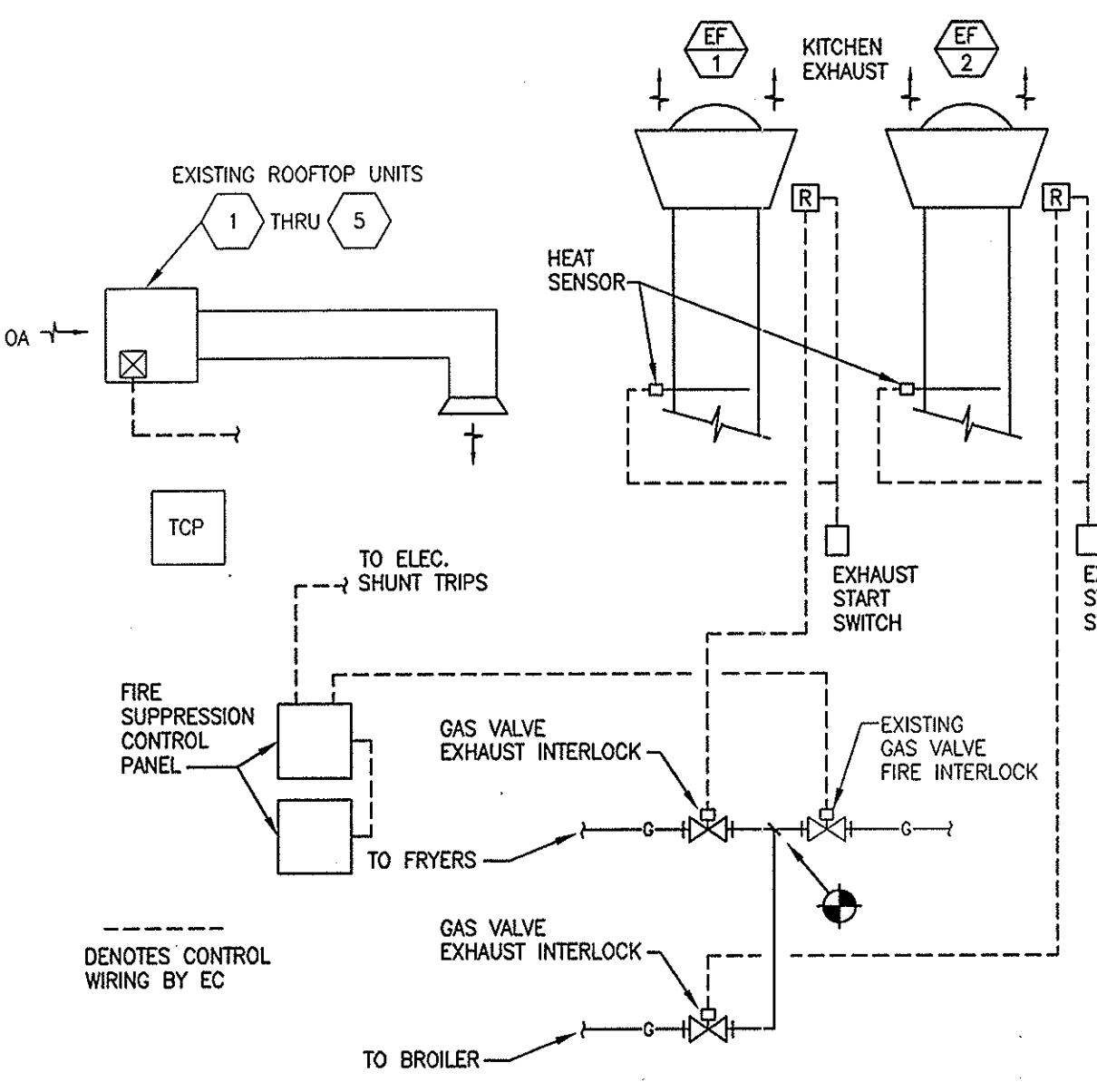


NOTE:  
 COORDINATE CEILING REMOVAL, REPLACEMENT AND REPLACEMENT OF ANY DAMAGED CEILING TILES WITH GC AS REQUIRED.

NOTE:  
 MAINTAIN A MINIMUM CLEARANCE OF 10'-0" FROM ANY EXHAUST FAN OR VENT TO ANY FRESH AIR INTAKE.

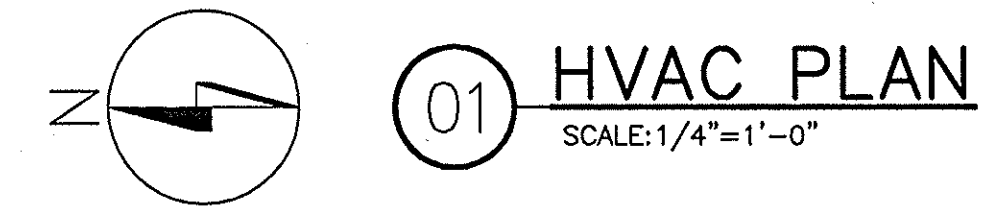


**ROOF EXHAUSTER DETAIL (EF-3)**  
 NOT TO SCALE



**KITCHEN EXHAUST, EXISTING ROOFTOP UNITS 1 THRU 5 AND EQUIPMENT GAS VALVES SEQUENCE OF CONTROL**  
 NOT TO SCALE

- SEQUENCE OF CONTROL**  
**KITCHEN EXHAUST AND EXISTING ROOFTOP UNITS**
- INCLUDE ALL POWER WIRING AND CONDUIT, CONTROL RELAYS, INTERLOCKS, SENSORS, THERMOSTATS, VALVES, DAMPERS, TRANSFORMERS, AND OTHER COMPONENTS AND RELATED WORK NECESSARY FOR A COMPLETE AND OPERATIONAL SYSTEM. COORDINATE WITH GC/ARCHITECT
  - VERIFY SEQUENCE OF CONTROL WITH ACTUAL HOOD, COMPONENTS AND ANSUL SYSTEM PROVIDED.
  - RTU-1 THRU 5 SHALL OPERATE IN UNISON WHENEVER ANY KITCHEN EXHAUST FAN IS ACTIVATED.
  - EXHAUST FAN SHALL BE ACTIVATED BY START SWITCH OR HEAT SENSOR.
  - GAS VALVE EXHAUST INTERLOCK SHALL NOT OPEN GAS TO ASSOCIATED KITCHEN EQUIPMENT UNLESS EXHAUST SYSTEM IS OPERATIONAL BY START SWITCH.
  - WHEN FIRE SUPPRESSION IS ACTIVATED, INTERLOCK OPERATION SO THAT THE EXISTING GAS VALVE FIRE INTERLOCK CLOSURES AND ACTIVATES THE ELECTRIC SHUNT TRIPS.
  - COORDINATE WITH EXISTING CONTROLS FOR EXISTING ROOFTOP UNITS 1 THRU 5.



DESIGNED BY: MI/MT  
 REVIEWED BY: TC  
 DRAWN BY: MI/MT  
 DATE: 2/21/2011  
 JOB NUMBER: 2010-5068  
 SCALE: 1/4" = 1'-0"

**WIGHTMAN PETRIE**  
 ENVIRONMENTAL LANDSCAPE ARCHITECTURE  
 SURVEYING ENGINEERING  
 412 South Lafayette Blvd South Bend, IN 46601 P. 574.232.4388 F. 574.232.4333

**Brurger King Restaurant**  
 Kentwood, Michigan  
**BRAVOKILO, INC.**  
 Mishawaka, Indiana  
 4220 Edison Lakes Parkway  
 HVAC PLAN

DESIGNATION: M401