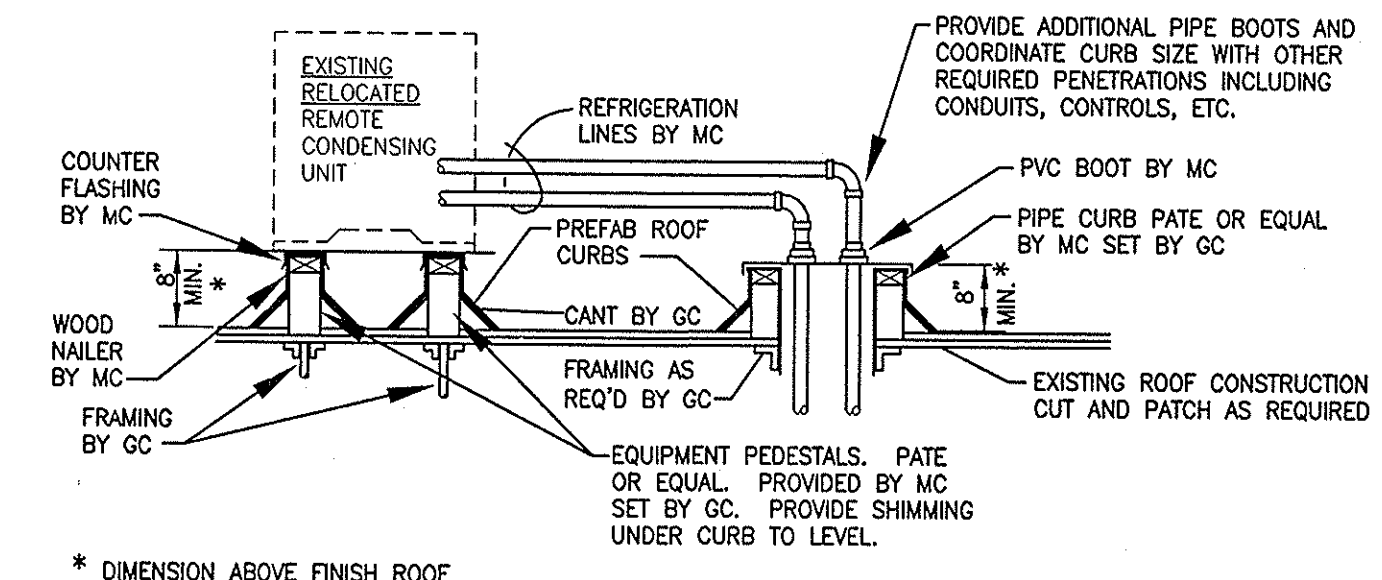


STANDARD PIPE HANGER DETAIL
 NOT TO SCALE

ANSUL SYSTEM COORDINATION NOTES:

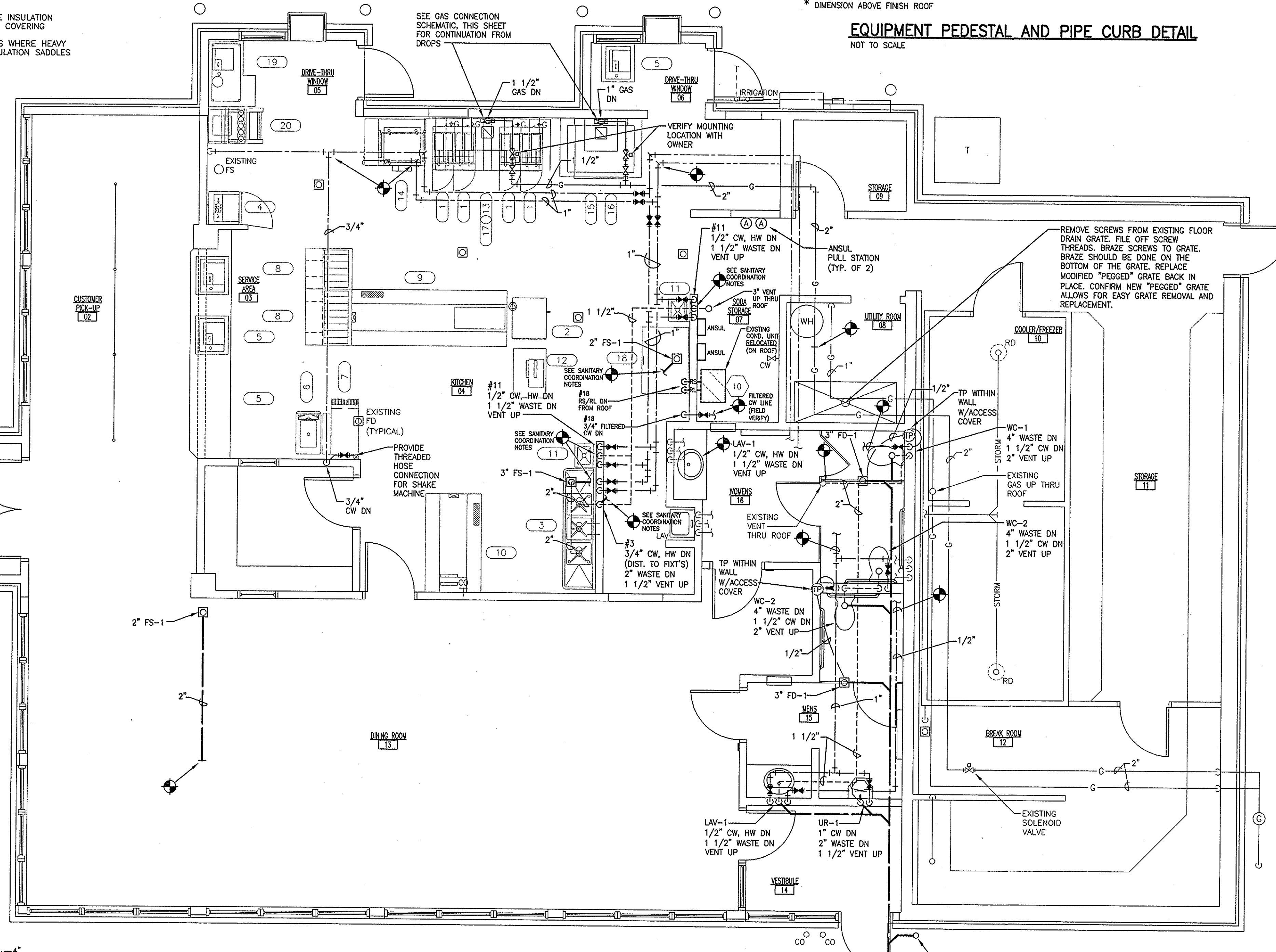
- REFER TO ARCHITECTURAL DRAWING X-1710-K101 FOR ADDITIONAL INFORMATION AND COORDINATION.
- ANSUL SYSTEM PROVIDED BY GC, INSTALLED BY MC.



EQUIPMENT PEDESTAL AND PIPE CURB DETAIL
 NOT TO SCALE

REFER TO ARCHITECTURAL DRAWING X-1710-K101 FOR ADDITIONAL INFORMATION AND COORDINATION.

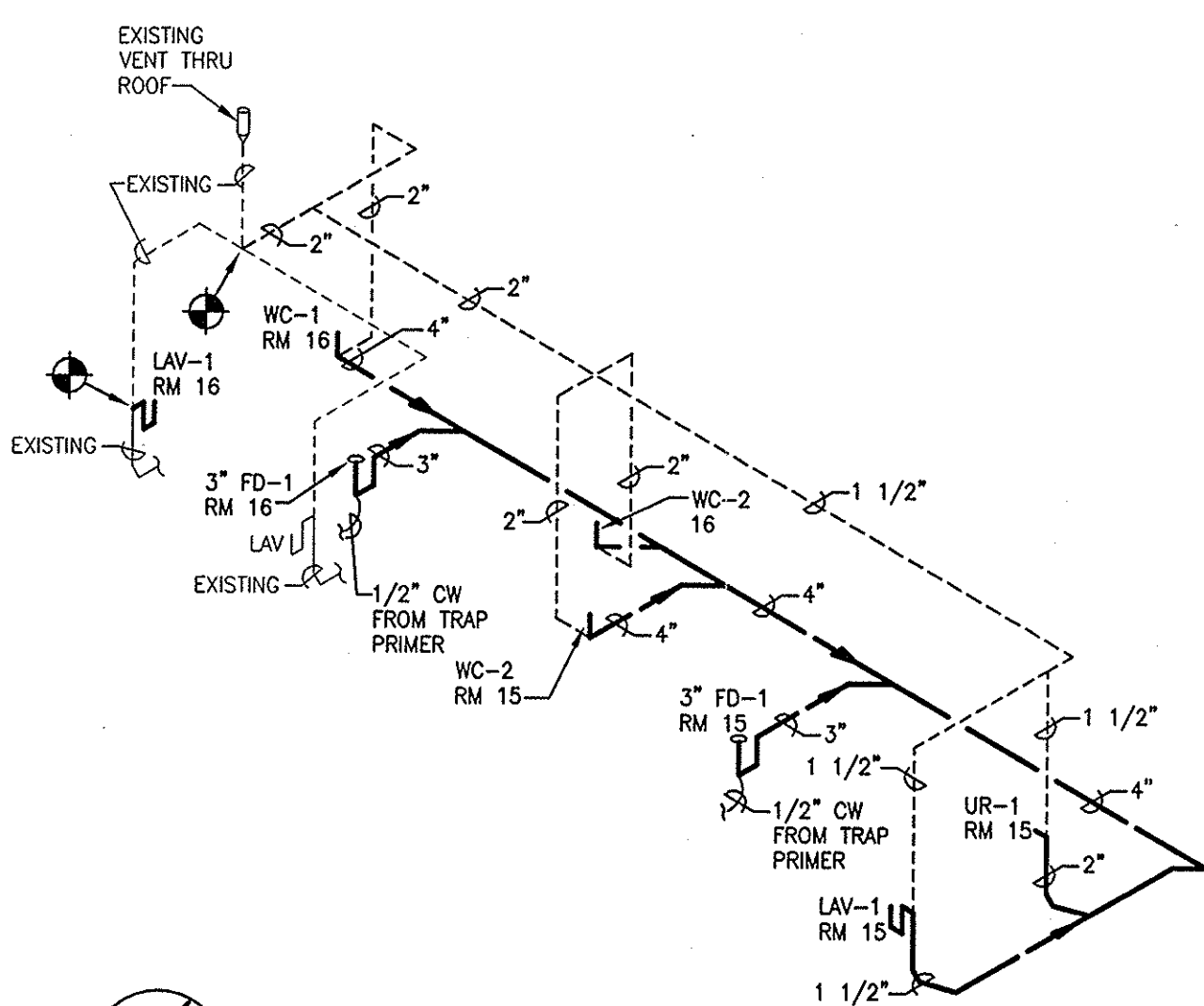
Item No	Qty	Equipment Category
1	4	Fryer, Deep Fat, Gas
2	1	Oven, Convection, Electric
3	1	Sink, Scullery, 3 Compartments
4	1	Refrigerator, Undercounter
5	3	P.O.S.
6	1	SHAKE MACHINE
7	1	FROZEN COKE MACHINE
8	2	HEATED SANDWICH HOLDING UNIT
9	1	MAIN PREP PRODUCTION
10	1	PREP PRODUCTION
11	2	HAND SINK
12	2	VERTICAL TOASTER W/ STAND
13	1	FRY DISPENSER
14	1	FRY STATION
15	1	BROILER
16	1	BROILER HOOD
17	1	FRY HOOD
18	1	ICE MAKER W/ BIN
19	1	P.O.S. W/ STAND
20	1	ICE/SODA DISPENSER



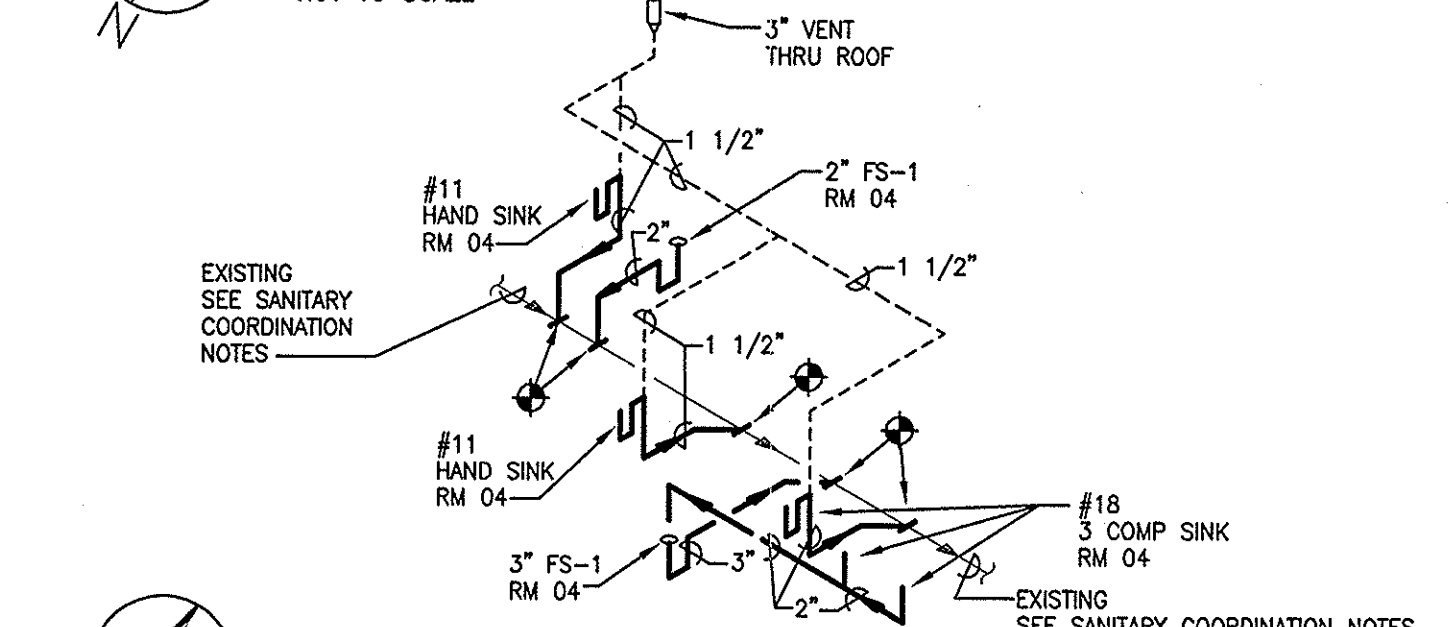
01 PLUMBING PLAN
 SCALE: 1/4" = 1'-0"

SANITARY COORDINATION NOTES:

- WITHIN KITCHEN 04, FIELD VERIFY EXISTING GREASE SANITARY ROUTING/LOCATION FOR REVISED LAYOUT THE IN LOCATIONS.
- LOCATE BY FLUSHING EXISTING GREASE SANITARY SYSTEMS WITH WATER AND/OR EVALUATING WITH CAMERA EQUIPMENT AND LOCATOR TO LOCATE THE CLOSEST TIE IN POINT.
- COORDINATE FLOOR CUTTING AND PATCHING WORK WITH GC AS REQUIRED.



NEW RESTROOMS SANITARY SCHEMATIC
 NOT TO SCALE



REVISED KITCHEN GREASE SANITARY SCHEMATIC
 NOT TO SCALE

NOTE: MAINTAIN A MINIMUM CLEARANCE OF 10'-0" FROM ANY EXHAUST FAN OR VENT TO ANY FRESH AIR INTAKE.

NOTE: COORDINATE EXHAUST INTERLOCK GAS VALVE AND FIRE INTERLOCK GAS VALVE. SEE SHEET M401 SEQUENCE OF CONTROL FOR ADDITIONAL INFORMATION AND COORDINATION.



GAS CONNECTION SCHEMATIC
 NOT TO SCALE

MARK	DESCRIPTION
CO	CLEAN OUT PROVIDE CAST BRASS CLEANOUTS, FULL SIZE UP TO FOUR INCHES (4") WHERE INDICATED, APPROXIMATELY EVERY FIFTY FEET (50') ON HORIZONTAL DRAINAGE PIPING, AT CHANGES IN DIRECTION, AT BASE OF LEADERS, SOIL AND WASTE STACKS, AND AS REQUIRED. EXTEND OUT CLEANOUTS IN OR BACK OF WALLS OR PARTITIONS WITH CAST BRASS PLUGS COVERED WITH STAINLESS STEEL VANDALPROOF WALL PLATES, ZURN SERIES Z-1468, J.R. SMITH, WADE OR JOSAM EQUAL. DECK PLATES SHALL BE: FINISHED FLOORS.....ROUND SCORATED NIKALOY, ZN-1400 UNFINISHED FLOORS.....ROUND SCORATED CAST IRON, Z-1400 EXTERIOR.....ROUND SCORATED CAST IRON, Z-1400
FD/FS	FLOOR DRAIN AND FLOOR SINK (FD-1 AND FS-1) FLOOR DRAINS, UNLESS OTHERWISE NOTED: COATED CAST IRON BODY WITH INTEGRAL TRAP, DOUBLE DRAINAGE FLANGE AND WEEP HOLES, AND CAULKED OUTLET. PROVIDE CLAMPING RINGS FOR SHOWER DRAINS AND FLOOR DRAINS IN MEMBRANE WATERPROOFED FLOORS. ZURN, J.R. SMITH, WADE OR JOSAM EQUAL.
FD-1	FLOOR DRAIN DURA-COATED CAST IRON, DEEP SEAL INTEGRAL TRAP, SEEPAGE PAN AND FLOOR CLEANOUT, SIX INCH (6") ADJUSTABLE SQUARE "TYPE S" STRAINER, TRAP PRIMER CONNECTION. FINISH: NIKALOY, ZURN Z-456.
FS-1	FLOOR SINK 12" X 12" X 8" DEEP, RECTANGULAR CAST IRON SANITARY FLOOR SINK WITH 1 1/2" CW DN 2" VENT UP. INTERIOR AND TOP, ALUMINUM ANTI-SPLASH DOME STRAINER, AND MEDIUM DUTY GRATE AND DEEPSLAP TRAP. FINISH: NIKALOY, ZURN Z-1901.
LAV-1	LAVATORY VITREOUS CHINA LAVATORY, SELF-RIMMING, ADA COMPLIANT, FAUCETS ON 4" CENTERS, FRONT OVERFLOW, COMPLETE WITH TWO (2) CLAMP ASSEMBLIES AND TUBE OF SEALER. FIXTURE COMPLETE WITH 3/8" LOOSE KEY-OPERATED STOPS, 1-1/4" CHROME PLATED BRASS ADJUSTABLE P-TRAP AND WALL ESCUTCHEONS. AMERICAN STANDARD "AQUALYN", NO. 0476.028 OR PRE-APPROVED EQUAL. FITTINGS: BATTERY POWERED, SENSOR OPERATED, ADA COMPLIANT, 4" CENTER, VANDALPROOF AERATOR, GRID DRAIN AND TALPIECE, COMPLETE WITH BELOW DECK THERMOSTATIC MIXING VALVE. SLOAN OPTIMA PLUS MODEL NO. EBF-650-BDT OR PRE-APPROVED EQUAL. PROVIDE INSULATION KIT FOR EXPOSED SUPPLY AND WASTE PIPING. PLUMBEREX OR PRE-APPROVED EQUAL. MECHANICAL CONTRACTOR SHALL PROVIDE A CUT-OUT TEMPLATE TO GENERAL CONTRACTOR IN AMPLE TIME TO MAINTAIN CONSTRUCTION SCHEDULE. GENERAL CONTRACTOR SHALL CUT OPENINGS IN CABINET TOPS FOR LAVATORY. MECHANICAL CONTRACTOR SHALL COORDINATE AS REQUIRED.
TP	TRAP PRIMER SANI-GUARD AUTOMATIC TRAP PRIMER, ALL BRONZE BODY WITH INTEGRAL VACUUM BREAKER, NON-LIMING INTERNAL OPERATING ASSEMBLY WITH GASKETED BRONZE COVER. COORDINATE NUMBER OF 1/2" CONNECTIONS AS SHOWN ON DRAWINGS. ZURN MODEL NO. Z1022. COMPLETE WITH 10"x10" ACCESS DOOR IN WALL (WHERE REQUIRED).
UR-1	URINAL VITREOUS CHINA, WALL HANGING, 1.0 GPF, SIPHON JET, 3/4" TOP INLET SPUD, 2" OUTLET, WITH PRIVACY SHIELDS, AMERICAN STANDARD "TRIMBROOK" NO. 8581.017 OR PRE-APPROVED EQUAL. CARRIER: COMPLETE WITH SUPPORT PLATE, BEARING PLATE, FIXTURE BOLTS, STEEL PIPE UPRIGHTS AND WEB OR BLOCK FEET AS REQUIRED BY CONSTRUCTION. REFER TO ARCHITECTURAL PLANS FOR EXACT MOUNTING HEIGHTS. FLUSH VALVE: BATTERY POWERED, SENSOR OPERATED, SLOAN "OPTIMA", 1.0 GPF LOW CONSUMPTION FLUSHOMETER, COURTESY FLUSH OPTION, MODEL NO. 8186-1.0-LH.
WC-1	WATER CLOSET VITREOUS CHINA, FLOOR MOUNTED, FLUSH VALVE, 1.6 GPF, SIPHON JET, ELONGATED BOWL WITH 1-1/2" TOP SPUD AND 2-1/4" PASSAGEWAY; AMERICAN STANDARD "MADERA" NO. 2234.015 OR PRE-APPROVED EQUAL. CLOSET SEAT: WHITE, SOLID PLASTIC OPEN FRONT, EXTENDED BACK SEAT, LESS COVER WITH CHECK HINGE; AMERICAN STANDARD NO. 5901.110 OR PRE-APPROVED EQUAL. REFER TO ARCHITECTURAL PLANS FOR EXACT MOUNTING HEIGHTS.
WC-2	WATER CLOSET VITREOUS CHINA, FLOOR MOUNTED, (HANDICAPPED/ADA) FLUSH VALVE, 1.6 GPF, SIPHON JET, ELONGATED BOWL WITH 1-1/2" TOP SPUD AND 2-1/4" PASSAGEWAY; AMERICAN STANDARD "MADERA" NO. 3043.102 OR PRE-APPROVED EQUAL. CLOSET SEAT: WHITE, SOLID PLASTIC OPEN FRONT, EXTENDED BACK SEAT, LESS COVER WITH CHECK HINGE; AMERICAN STANDARD NO. 5901.110 OR PRE-APPROVED EQUAL. REFER TO ARCHITECTURAL PLANS FOR EXACT MOUNTING HEIGHTS. FLUSH VALVE: BATTERY POWERED, SENSOR OPERATED, 1.6 GPF, 1-1/4" TOP SPUD WITH FLUSH OVER-RIDE BUTTON. SLOAN "OPTIMA PLUS" (ROYAL) ELECTRONIC CLOSET FLUSHOMETER NO. 8111-LH.

DESIGNED BY: M/MT
 REVIEWED BY: TC
 DRAWN BY: M/MT
 DATE: 2/21/2011
 JOB NUMBER: 2010-5068
 SCALE: 1/4" = 1'-0"

Burger King Restaurant
 Kentwood, Michigan

BRAVOKILO, INC.
 4220 Edison Lakes Parkway
 Mishawaka, Indiana

WIGHTMAN PETRIE
 ENVIRONMENTAL LANDSCAPE ARCHITECTURE
 SURVEYING ENGINEERING

412 South Lafayette Blvd South Bend, IN 46601 p: 574.232.4388 f: 574.232.4333

STATE OF MICHIGAN
 THOMAS R. COOK
 No. 33392
 PROFESSIONAL ENGINEER

M301