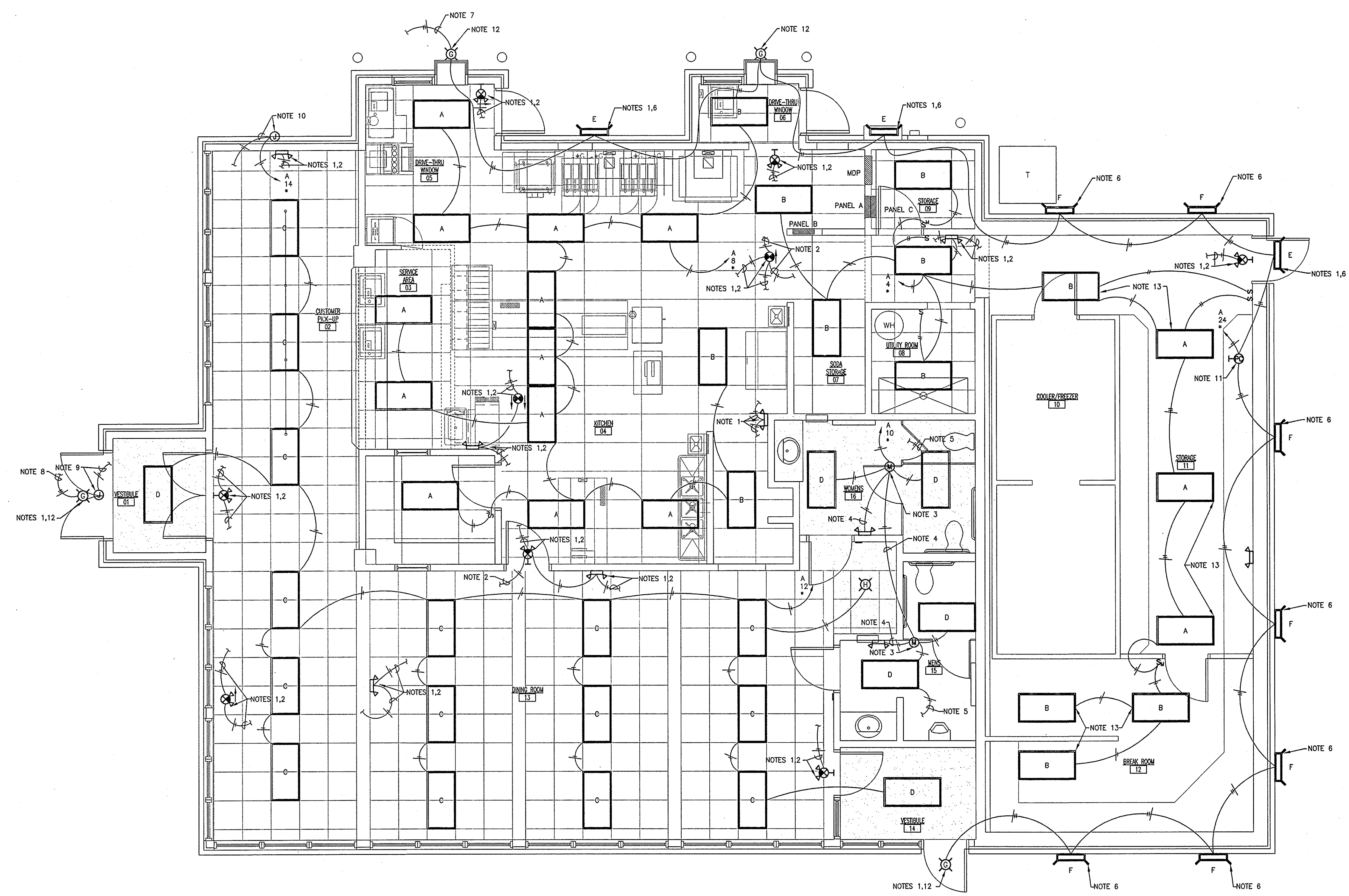


DATE	
BY	
DESCRIPTION	
REV.	

LIGHTING PLAN NOTES

1. ALL EMERGENCY/EXIT LIGHT FIXTURE WILL BE CONNECTED TO AN UNSWITCHED LEG OF LOCAL LIGHTING CIRCUIT.
2. CONTINUE TO EMERGENCY/EXIT LIGHT FIXTURE.
3. MOTION SENSORS SHALL BE 120 VOLT, DUAL TECHNOLOGY TYPE BY SENSOR SWITCH OR EQUAL.
4. CONNECT TO UNSWITCHED "LINE" SIDE OF WOMEN'S ROOM MOTION SENSOR.
5. CONTINUE TO EXHAUST FAN. SEE SHEET M401 FOR LOCATION.
6. SEE ARCHITECTURAL ELEVATIONS SHEET A402 FOR LOCATION AND MOUNTING HEIGHT.
7. CONTINUE TO FRONT CANOPY FIXTURE.
8. CONTINUE TO DRIVE UP CANOPY FIXTURE.
9. CONTINUE TO EAST SIGN LIGHTING. SEE ARCHITECTURAL ELEVATIONS SHEET A401 FOR ADDITIONAL INFORMATION. ROUGH IN AND WIRING BY E.C.
10. CONTINUE TO NORTH SIGN LIGHTING. SEE ARCHITECTURAL ELEVATIONS SHEET A401 FOR ADDITIONAL INFORMATION. ROUGH IN AND WIRING BY E.C.
11. STEM MOUNT TORK MODEL #2001 (OR EQUAL) PHOTOELECTRIC CONTROL ON 3/4" RIGID STEEL CONDUIT EXTENDED THROUGH ROOF. G.C. TO PROVIDE PATCHING OF ROOF AS REQUIRED WHERE NEW CONDUIT IS INSTALLED. WORK OF BASE BID.
12. COORDINATE INSTALLATION OF RECESSED CANOPY MOUNTED FIXTURE WITH G.C. AS REQUIRED.
13. INSTALL NEW FIXTURE IN EXISTING GRID.



01 LIGHTING PLAN
 SCALE: 1/4" = 1'-0"

WIGHTMANPETRIE
 SURVEYING ENGINEERING ENVIRONMENTAL LANDSCAPE ARCHITECTURE
 412 South Lafayette Blvd. South Bend, IN 46601 p. 574.232.4388 f. 574.232.4333

Brurger King Restaurant
 Kentwood, Michigan
BRAVOKILO, INC.
 4220 Edison Lakes Parkway
 Mishawaka, Indiana

DESIGNED BY:	M/MT
REVIEWED BY:	TC
DRAWN BY:	M/MT
DATE:	2/21/2011
JOB NUMBER:	2010-5068
SCALE:	1/4" = 1'-0"
	E401