

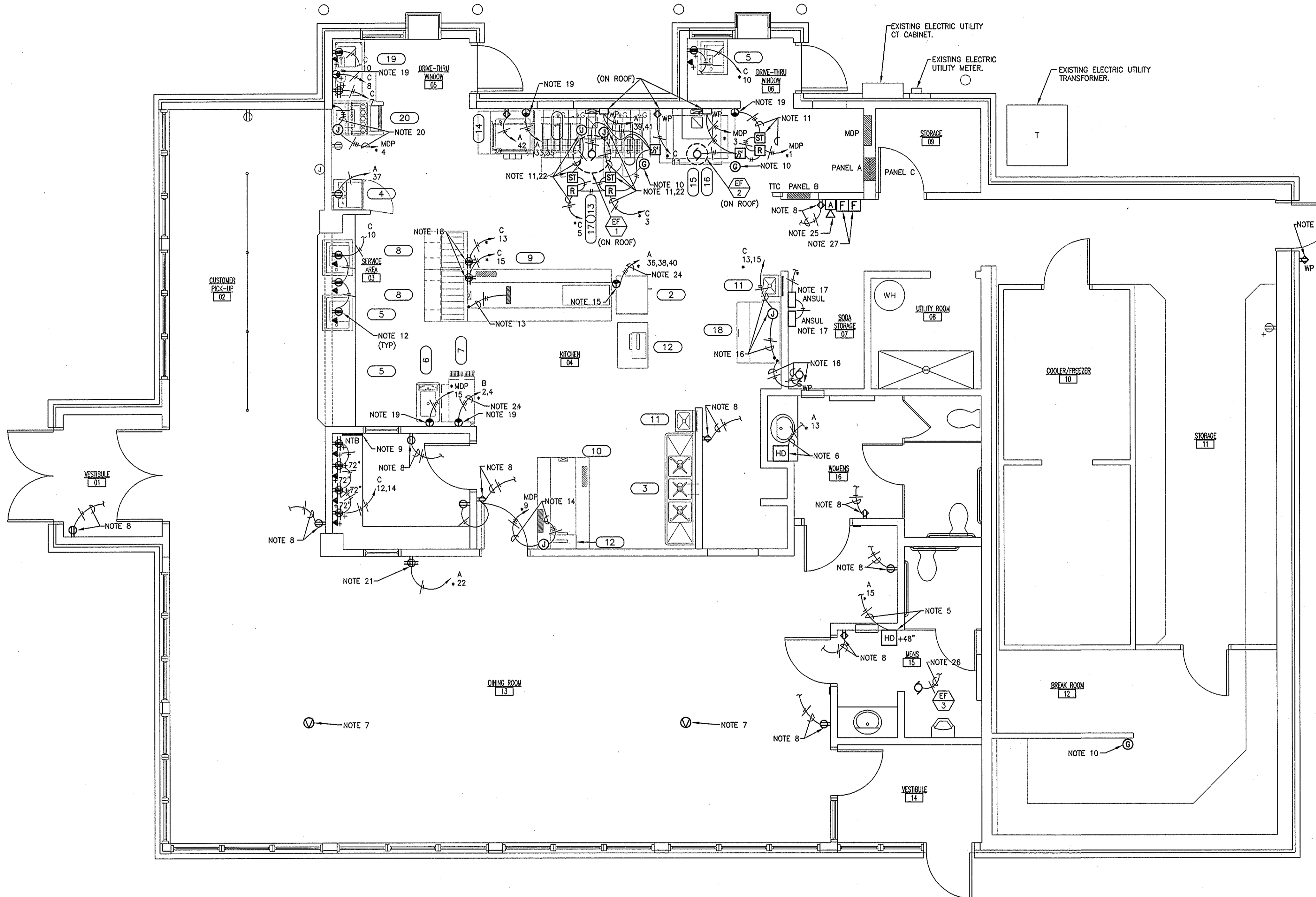
GENERAL ELECTRICAL NOTES

- ALL WORK SHALL BE IN ACCORDANCE WITH NATIONAL, STATE, AND LOCAL CODES IN FORCE AT THE TIME OF BIDDING, INCLUDING, BUT NOT LIMITED TO, THE MICHIGAN CONSTRUCTION RULES AND NATIONAL ELECTRICAL CODE.
- DRAWINGS ARE DIAGRAMMATIC AND GENERALLY INDICATIVE OF WORK REQUIRED. SURFACE RACEWAY, TELEPHONE/DATA OUTLETS AND POWER OUTLETS HAVE BEEN LOCATED BASED ON PRELIMINARY CASE WORK AND COUNTER DIMENSIONS. THIS CONTRACTOR SHALL VERIFY IN FIELD ACTUAL CASE WORK AND COUNTER DIMENSIONS AND LOCATIONS AND COORDINATE ELECTRICAL EQUIPMENT LOCATIONS WITH ACTUAL CASE WORK PROVIDED PRIOR TO INSTALLATION OF ROUGH-INS, WHERE REQUIRED, ELECTRICAL ITEM LOCATIONS, MOUNTING HEIGHTS, ETC. SHALL BE REVISED AS REQUIRED TO ACCOMMODATE ADJACENT CASE WORK, COUNTERS AND OTHER EQUIPMENT AT NO ADDITIONAL COST TO THE OWNER.
- ROUGH-INS AND ELECTRICAL OUTLETS IN THE KITCHEN AREA REFLECT PRELIMINARY COORDINATION WITH THE OWNER/ARCHITECT. THIS CONTRACTOR SHALL PROVIDE FINAL COORDINATION WITH THE KITCHEN EQUIPMENT CONTRACTOR IN FIELD AND REVISE ROUGH-IN OR OUTLET CONFIGURATIONS, MOUNTING HEIGHT, AMPACITIES, ETC. TO REFLECT ACTUAL REQUIREMENT OF SPECIFIC EQUIPMENT BEING PROVIDED.
- WHERE FLUORESCENT TROFFERS ARE INSTALLED IN SUSPENDED ACCESSIBLE CEILINGS, PROVIDE FOUR (4) CLIPS PER FIXTURE (FURNISHED BY LIGHT FIXTURE MANUFACTURER) AND CONNECT EACH FLUORESCENT TROFFER TO THE SUSPENDED CEILING "T"-BAR AT FOUR LOCATIONS PER TROFFER. TROFFER SHALL ALSO BE SUPPORTED FROM THE STRUCTURE WITH (2) SUPPORT WIRES ATTACHED AT OPPOSITE CORNERS OF THE LIGHT FIXTURE.
- ALL CONDUITS SHALL BE CONCEALED WITHIN WALLS, CEILINGS OR FLOORS UNLESS SPECIFICALLY INDICATED ON THE DRAWINGS OR PRE-APPROVED BY THE ARCHITECT/ENGINEER.
- INSTALL A SEPARATE GROUNDING CONDUCTOR, INSULATED GREEN, IN ALL CONDUITS. WHERE WIRING COUNTS ARE INDICATED ON DRAWINGS, THESE WIRING COUNTS EXCLUDE THE GROUNDING CONDUCTOR, HOWEVER, GROUNDING CONDUCTOR IS REQUIRED.
- MAINTAIN ACCURATE RECORDS OF ALL CHANGES MADE DURING CONSTRUCTION. PROVIDE A NEATLY MARKED SET OF BLUEPRINTS TO THE ENGINEER/ARCHITECT AT COMPLETION OF THE PROJECT, INDICATING ALL FIELD CHANGES.
- INCREASE BRANCH CIRCUIT CONDUCTORS TO ACCOMMODATE FOR VOLTAGE DROP. 120V CIRCUITS OVER 100' SHALL BE #10 AWG MINIMUM.
- REFER TO ARCHITECTURAL REFLECTED CEILING PLANS FOR EXACT LOCATION OF LIGHT FIXTURES. CONTRACTORS TO CORRELATE LOCATIONS OF LIGHTING, SPEAKERS, AIR DIFFUSERS, GRILLES, ETC. WITH REFLECTED CEILING PLANS AS REQUIRED AND DIRECTED BY THE ARCHITECT.
- ALL DEVICES, EQUIPMENT, FIXTURES, ETC. MUST BE GROUNDED BY USE OF A PROPERLY SIZED GROUNDING CONDUCTOR. MECHANICAL/ELECTRICAL BONDS OF THE METALLIC RACEWAY SYSTEM SHALL ALSO BE MAINTAINED.
- REFER TO MECHANICAL PLANS FOR EXACT LOCATION OF MECHANICAL EQUIPMENT AND LOCATE DISCONNECT SWITCHES IN ACCORDANCE WITH THE N.E.C.
- REFER TO MECHANICAL SPECIFICATIONS, HVAC PLANS AND PLUMBING PLANS FOR ADDITIONAL ELECTRICAL WORK AND INCLUDE ALL COST IN BASE BID.
- REFER TO "CONTROL SCHEMATICS" MECHANICAL DRAWINGS FOR ADDITIONAL CONTROL WIRING AND CONTROL CONNECTIONS BY THIS CONTRACTOR.
- UNLESS OTHERWISE NOTED, ALL DEVICE ELEVATIONS REFER TO CENTER OF OUTLET BOX. (SEE SPECIFICATIONS.) THE ELECTRICAL CONTRACTOR SHALL VERIFY ALL OUTLET LOCATIONS WITH OTHER TRADES.
- ALL RECEPTACLES SHOWN BACK-TO-BACK IN WALLS SHALL BE SEPARATED BY 8" MINIMUM.
- PROVIDE "SEAL-OFFS" WHEN PIPING PASSES THROUGH AREAS OF DIFFERENT AMBIENT TEMPERATURES AND/OR HAZARDOUS AREAS.
- PROVIDE AND INSTALL (MIN.) #6 INSULATED COPPER GROUND BONDING JUMPER ACROSS INLET AND OUTLET PIPING OF ALL MECHANICAL UNITS AND JUNCTIONS WHERE NON-METALLIC OR DISSIMILAR METALS INTERRUPT THE PATH TO GROUND. THESE ITEMS SHALL INCLUDE BUT ARE NOT LIMITED TO THE FOLLOWING:
 A. WATER HEATERS
 B. WATER METER
 C. WATER SOFTENERS
- THE ELECTRICAL CONTRACTOR SHALL BE RESPONSIBLE FOR ANY CUTTING AND PATCHING REQUIRED FOR THE PROPER INSTALLATION, SUPPORT, OR ANCHORAGE OF ELECTRICAL EQUIPMENT. THE E.C. SHALL LAYOUT CAREFULLY IN ADVANCE WHERE CUTTING, CHANNELING OR DRILLING IS NECESSARY FOR THE PROPER COMPLETION OF ELECTRICAL WORK. COORDINATE WITH OTHER TRADES AS REQUIRED.

NOTE:
 E.C. SHALL VERIFY ALL HOOD AND ANSUL SYSTEM WIRING REQUIREMENTS WITH M.C. AND ANSUL SYSTEM PROVIDER, ACTUAL FIELD CONDITIONS AND ACTUAL EQUIPMENT PROVIDED. INCLUDE ALL COSTS IN BID.

ELECTRICAL PLAN NOTES

- ELECTRICAL ITEMS SHOWN LIGHT ARE EXISTING. ITEMS SHOWN DARK ARE NEW TO BE INSTALLED OR AS NOTED.
- ALL CIRCUITING IS BASED ON BEST AVAILABLE INFORMATION FROM EXISTING FIELD CONDITIONS AND PANEL BOARD SCHEDULES. THE ELECTRICAL CONTRACTOR SHALL VERIFY EXISTING CIRCUITING AND COORDINATE NEW WORK AS REQUIRED TO FACILITATE ALL KITCHEN/MECHANICAL EQUIPMENT CHANGES. THE E.C. SHALL ALSO PROVIDE NEW COMPLETE TYPED PANEL BOARD SCHEDULES FOR ALL PANEL BOARDS. COORDINATE ALL WORK WITH WORK OF OTHER TRADES AND ACTUAL FIELD CONDITIONS, EXISTING/RELOCATED EQUIPMENT AND NEW EQUIPMENT PROVIDED.
- VERIFY ALL CONDUIT TYPES, WHERE EXPOSED, WITH LOCAL INSPECTOR AND COORDINATE WITH LOCAL ELECTRICAL/HEALTH/BUILDING CODES AS REQUIRED.
- PROVIDE NEW WIRING DEVICE AND CONNECT TO EXISTING CIRCUIT IN EXISTING LOCATION.
- PROVIDE ROUGH-IN FOR NEW HAND DRYER. PROVIDE NEW WIRING AND CONDUIT AND CONNECT TO EXISTING HAND DRYER CIRCUIT. UTILIZE EXISTING CONDUITS AND RACEWAY WHERE POSSIBLE. HAND DRYER BY G.C. INSTALLED AND WIRED BY E.C.
- NEW HAND DRYER BY G.C. INSTALLED AND WIRED BY E.C. RECONNECT TO EXISTING HAND DRYER CIRCUIT.
- REINSTALL AND RECONNECT EXISTING CEILING SPEAKER.
- PROVIDE NEW RECEPTACLE WIRING AND CONDUIT AND CONNECT TO NEAREST EXISTING GENERAL PURPOSE RECEPTACLE CIRCUIT SUCH THAT NO MORE THAN EIGHT RECEPTACLES ARE CONNECTED TO ONE 20 AMP CIRCUIT. COORDINATE WITH EXISTING FIELD CONDITIONS AS REQUIRED.
- COORDINATE REINSTALLATION OF NETWORK TERMINAL BOARD WITH OWNER.
- GAS SOLENOID VALVE BY M.C. WIRING BY E.C. COORDINATE ALL WIRING REQUIREMENTS WITH M.C. AND ANSUL SYSTEM INSTALLER. SEE KITCHEN EXHAUST, RTU 1 THRU 5 GAS AND GAS VALVE SEQUENCE OF CONTROL DETAIL SHEET M401 FOR ADDITIONAL INFORMATION.
- CONNECT FRYER/BROILER HOOD CIRCUITS THROUGH HOOD SHUNT TRIP IN NEMA ENCLOSURE FURNISHED BY ANSUL SYSTEM PROVIDER INSTALLED AND WIRED BY E.C.
- INSTALLED BELOW COUNTER.
- RECONNECT EXISTING FEED TO MAIN TABLE PANEL.
- PROVIDE NEW CONDUCTORS AND RACEWAY TO REFEED EXISTING SPEC TABLE PANEL. SEE ONE-LINE DIAGRAM SHEET E501 FOR CONDUCTOR AND CONDUIT SIZES.
- PROVIDE J-BOX AT CEILING WITH 30-AMP 3-POLE DROP CORD TO RECONNECT EXISTING OVEN. PROVIDE RECEPTACLE NEMA CONFIGURATION TO MATCH OVEN. PROVIDE STRAIN RELIEF FOR CORD. FIELD VERIFY EXACT LOCATION WITH KITCHEN EQUIPMENT INSTALLER.
- REFEED EXISTING ICE MACHINE. REFEED EXISTING RELOCATED ROOF TOP COMPRESSOR. PROVIDE NEW WEATHERPROOF DISCONNECT ON ROOF FOR COMPRESSOR. FIELD VERIFY EXACT LOCATION WITH M.C.
- PROVIDE NEW CONDUCTORS AND RACEWAY AS REQUIRED AND CONNECT NEW ANSUL SYSTEM PANEL TO EXISTING CIRCUIT. PROVIDE INTERCONNECTIONS TO SHUNT TRIPS AND GAS VALVES. COORDINATE ALL REQUIREMENTS WITH ANSUL SYSTEM INSTALLER AND INCLUDE ALL COSTS IN BID.
- CEILING MOUNTED RECEPTACLES. VERIFY EXACT LOCATION WITH OWNER/KITCHEN EQUIPMENT CONTRACTOR.
- COORDINATE RECEPTACLE AMPERAGE/CONFIGURATION WITH EXISTING EQUIPMENT RECEPTACLE.
- RECONNECT EXISTING SODA DISPENSER.
- ALL LOW VOLTAGE WIRING FOR KITCHEN MINDER SYSTEM BY OWNER'S LOW VOLTAGE CONTRACTOR.
- POWER FOR FRYERS AND FRY DISPENSER PROVIDED WITH HOOD ASSEMBLY.
- ALL LOW VOLTAGE WIRING FOR KITCHEN MINDER SYSTEM BY OWNER'S LOW VOLTAGE CONTRACTOR.
- (3) #10, #10G IN 3/4" C
- HORN STROBE UNIT PROVIDED BY ANSUL SYSTEM PROVIDER. INSTALLED AND WIRED BY E.C. FIELD VERIFY EXACT LOCATION AND MOUNTING HEIGHT WITH LOCAL INSPECTOR PRIOR TO INSTALLATION. COORDINATE WITH OTHER TRADES AND ACTUAL FIELD CONDITIONS AS REQUIRED.
- CONNECT TO LIGHTING CIRCUIT. SEE SHEET E401 FOR CONTINUATION.
- ANSUL SYSTEM PULL STATION. E.C. SHALL PROVIDE EMPTY 4X4" J-BOX AND EMT 3/4" RACEWAY TO ANSUL SYSTEM PANEL.



Item No	Qty	Equipment Category
1	4	Fryer, Deep Fat, Gas
2	1	Oven, Convection, Electric
3	1	Sink, Scullery, 3 Compartments
4	1	Refrigerator, Undercounter
5	3	P.O.S.
6	1	SHAKE MACHINE
7	1	FROZEN COKE MACHINE
8	2	HEATED SANDWICH HOLDING UNIT
9	1	MAIN PREP PRODUCTION
10	1	PREP PRODUCTION
11	2	HAND SINK
12	2	VERTICAL TOASTER W/ STAND
13	1	FRY DISPENSER
14	1	FRY STATION
15	1	BROILER
16	1	BROILER HOOD
17	1	FRY HOOD
18	1	ICE MAKER W/ BIN
19	1	P.O.S. W/ STAND
20	1	ICE/SODA DISPENSER

01 POWER PLAN
 SCALE: 1/4" = 1'-0"

DESIGNED BY:	MI/MT
REVIEWED BY:	TC
DRAWN BY:	MI/MT
DATE:	2/21/2011
JOB NUMBER:	2010-5068
SCALE:	1/4" = 1'-0"
E301	

Burger King Restaurant Kentwood, Michigan BRAVOKILO, INC.	Mishawaka, Indiana
	4220 Edison Lakes Parkway ELECTRICAL POWER / SYSTEMS PLAN

SURVEYING ENVIRONMENTAL LANDSCAPE ARCHITECTURE WIGHTMAN PETRIE	417 South Lafayette Blvd South Bend, IN 46601 p. 574.232.4388 f. 574.232.4333
--	--

STATE OF MICHIGAN THOMAS R. COOK ENGINEER No. 33392 PROFESSIONAL ENGINEER <i>Thomas R. Cook</i>
--