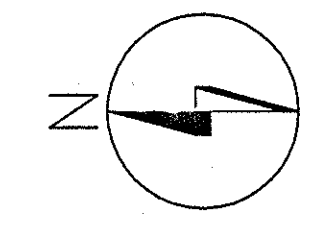
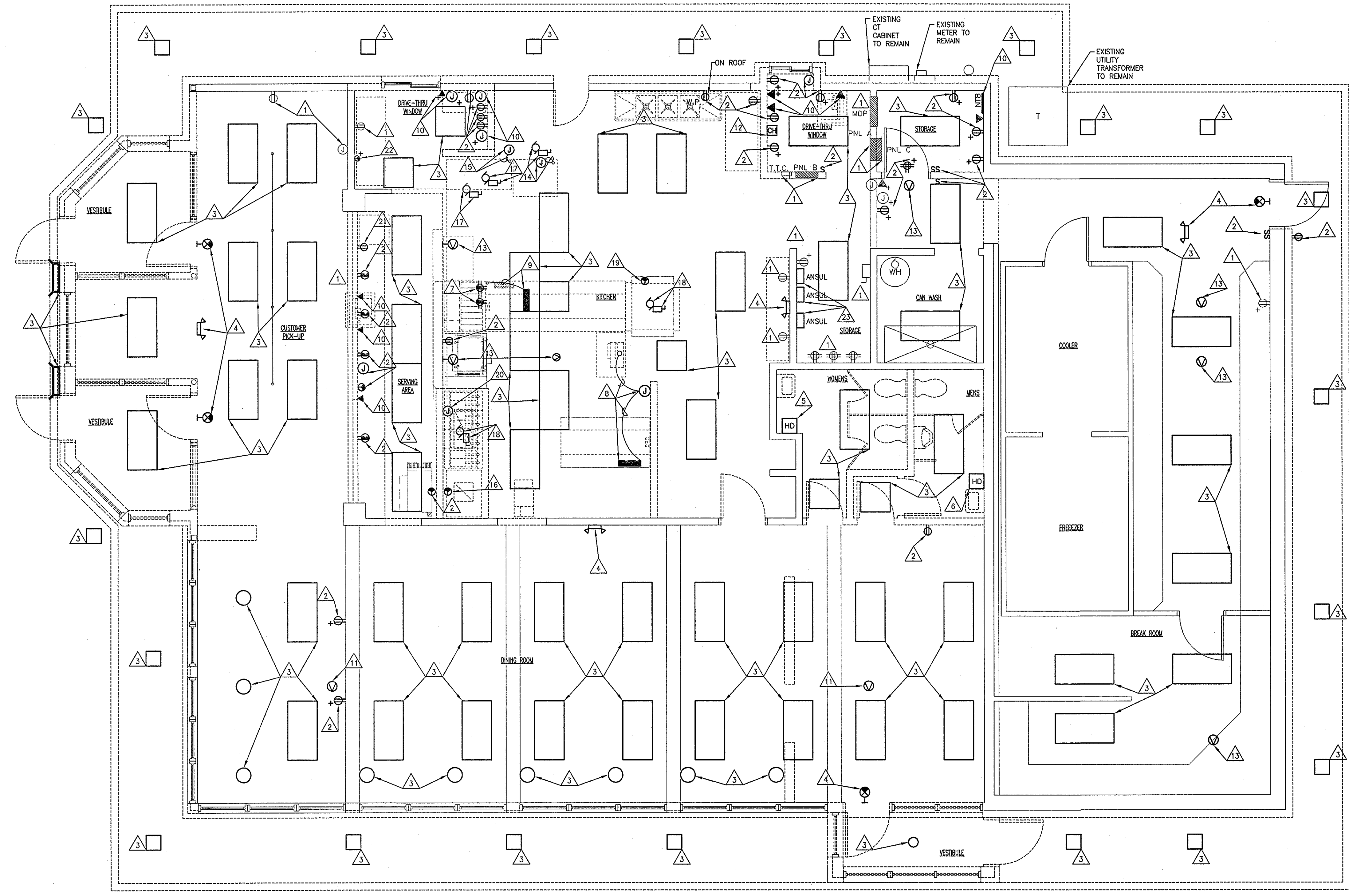


**GENERAL ELECTRICAL DEMOLITION NOTES**

1. THE ELECTRICAL DEMOLITION DRAWINGS INDICATE MAJOR ELECTRICAL ITEMS TO BE REMOVED. THE DRAWINGS ARE INTENDED TO INDICATE THE GENERAL SCOPE OF ELECTRICAL DEMOLITION WORK REQUIRED AND DO NOT INDICATE EVERY LIGHT FIXTURE, ELECTRICAL OUTLET, CONDUIT, WIRE OR OTHER ELECTRICAL DEVICE THAT MUST BE REMOVED, RELOCATED OR OTHERWISE MODIFIED TO FACILITATE NEW CONSTRUCTION. THE ELECTRICAL CONTRACTOR SHALL VISIT SITE PRIOR TO SUBMITTING A BID AND DETERMINE THE EXACT SCOPE OF DEMOLITION WORK.
2. WHERE THE MECHANICAL CONTRACTOR IS REMOVING EXISTING MECHANICAL EQUIPMENT, THIS CONTRACTOR SHALL ALSO REMOVE ALL ASSOCIATED CONDUIT, WIRE, DISCONNECT SWITCHES, MOTOR STARTERS, ETC. REFER TO DRAWING M201 FOR ADDITIONAL WORK BY THIS CONTRACTOR ASSOCIATED WITH MECHANICAL EQUIPMENT REMOVAL.
3. WHERE WALLS TO REMAIN ARE DAMAGED BY THE REMOVAL OF ANY ELECTRICAL EQUIPMENT, THIS CONTRACTOR SHALL PATCH AS REQUIRED TO MATCH ADJACENT SURFACES.
4. THE OWNER RETAINS FIRST SALVAGE RIGHTS TO ALL EQUIPMENT. ITEMS THAT THE OWNER WISHES TO RETAIN SHALL BE DELIVERED TO THE OWNERS STORAGE AREA. ALL OTHER MATERIALS SHALL BE REMOVED FROM THE SITE IMMEDIATELY.
5. COORDINATE SCHEDULE OF DEMOLITION WORK WITH THE OTHER TRADES. COORDINATE SHUTDOWN OF MAIN SERVICES WITH OWNER (I.E. POWER, TELEPHONE, ETC.).
6. PIPING SHOWN ON DRAWINGS IS INTENDED TO INDICATED GENERAL PIPING EXTENT AND LAYOUT OF MAJOR COMPONENTS ONLY. FIELD VERIFY ACTUAL CONDITIONS, LOCATIONS, ARRANGEMENT, ETC.
7. ITEMS SHOWN ON THE DEMOLITION DRAWINGS IN BOLD LINE WEIGHT ARE TO BE EITHER REMOVED OR RELOCATED. ITEMS SHOWN LIGHT ARE TO REMAIN UNCHANGED.
8. IF EXISTING CIRCUITS TO REMAIN ARE INTERRUPTED DURING DEMOLITION OR CONSTRUCTION REPAIR AND REROUTE AS REQUIRED.

**ELECTRICAL DEMOLITION NOTES**

- 1. ELECTRICAL ITEMS SHOWN LIGHT ARE EXISTING TO REMAIN. ITEMS SHOWN DARK ARE TO BE REMOVED OR REWORKED AS NOTED.
- 2. DISCONNECT AND REMOVE ELECTRICAL ITEM. REMOVE ASSOCIATED CONDUCTORS AND RACEWAY UNLESS REUSED DURING NEW CONSTRUCTION.
- 3. DISCONNECT AND REMOVE LIGHT FIXTURE. REMOVE ASSOCIATED FIXTURE WIRE, CONDUCTORS AND RACEWAY UNLESS REUSED DURING NEW CONSTRUCTION.
- 4. DISCONNECT AND REMOVE EMERGENCY/EXIT LIGHT. REMOVE CONDUCTORS AND RACEWAY TO SOURCE.
- 5. DISCONNECT AND REMOVE HAND DRYER. FEED TO REMAIN FOR CONNECTION OF NEW HAND DRYER IN EXISTING LOCATION.
- 6. DISCONNECT HAND DRYER. CIRCUIT TO BE UTILIZED FOR NEW HAND DRYER IN NEW LOCATION.
- 7. DISCONNECT AND REMOVE CEILING MOUNTED WIRING DEVICE. CONDUCTORS TO REMAIN FOR CONNECTION OF NEW DEVICES.
- 8. SPEC TABLE PANEL TO BE RELOCATED WITH TABLE. DISCONNECT AND REMOVE FEED TO SOURCE. COORDINATE WITH NEW CONSTRUCTION AS REQUIRED.
- 9. MAIN LINE TABLE PANEL TO BE RELOCATED WITH TABLE. DISCONNECT FEED AS REQUIRED FOR TABLE RELOCATION. RECONNECT FEED AFTER RELOCATION OF TABLE.
- 10. COORDINATE REMOVAL/RELOCATION OF DATA/LOW VOLTAGE WIRING AND WITH OWNER.
- 11. EXISTING SPEAKERS TO BE RELOCATED/REUSED IN NEW CEILING.
- 12. DISCONNECT AND REMOVE CABINET HEATER. REMOVE CONDUCTORS AND RACEWAY TO SOURCE.
- 13. COORDINATE REMOVAL/RELOCATION OF EXISTING SPEAKERS AND ASSOCIATED WIRING WITH OWNER.
- 14. ICE MACHINE AND ASSOCIATED ROOF MOUNTED CONDENSING UNIT TO BE RELOCATED. DISCONNECT FEED. REMOVE ASSOCIATED CONDUCTORS AND RACEWAY UNLESS REUSED FOR RECONNECTION IN NEW LOCATION. COORDINATE WITH NEW CONSTRUCTION AS REQUIRED.
- 15. SODA DISPENSER TO BE RELOCATED. DISCONNECT FEED. EXISTING FEED TO BE EXTENDED TO NEW LOCATION. COORDINATE WITH NEW CONSTRUCTION AS REQUIRED.
- 16. DISCONNECT AND REMOVE OVEN FEED TO SOURCE.
- 17. ROOF MOUNTED MECHANICAL MAKE UP AIR UNIT TO BE REMOVED. DISCONNECT AND REMOVE FEED TO SOURCE.
- 18. ROOF MOUNTED HOOD EXHAUST FAN TO BE REMOVED. DISCONNECT AND REMOVE FEED TO SOURCE. REMOVE ASSOCIATED INTERCONNECTING SHUTDOWN WIRING AND CONDUIT TO ANSUL SYSTEM.
- 19. EXISTING BROILER FEED TO BE RELOCATED. DISCONNECT AND REMOVE ASSOCIATED DROP CORD WIRING AND CONDUIT. EXISTING CIRCUIT TO BE EXTENDED TO NEW LOCATION. COORDINATE WITH NEW CONSTRUCTION AS REQUIRED.
- 20. EXISTING FRYER FEED TO BE RELOCATED. DISCONNECT AND REMOVE ASSOCIATED WIRING AND CONDUIT AS REQUIRED. EXISTING CIRCUIT TO BE EXTENDED TO NEW LOCATION. COORDINATE WITH NEW CONSTRUCTION AS REQUIRED.
- 21. UNDER COUNTER REFRIGERATOR TO BE RELOCATED. DISCONNECT AND REMOVE ASSOCIATED WIRING DEVICE. REMOVE ASSOCIATED WIRING AS REQUIRED FOR CONNECTION OF NEW DEVICE IN NEW LOCATION.
- 22. SHAKE MACHINE TO BE RELOCATED. DISCONNECT AND REMOVE ASSOCIATED RECEPTACLE, WIRING AND CONDUIT TO SOURCE.
- 23. EXISTING ANSUL SYSTEM TO BE REMOVED. DISCONNECT AND REMOVE ALL ASSOCIATED WIRING CONDUIT INCLUDING POWER, WIRING TO GAS CONTROL VALVES AND HOOD EQUIPMENT.



**01 ELECTRICAL DEMOLITION PLAN**  
 SCALE: 1/4" = 1'-0"

DATE	
BY	
DESCRIPTION	
REV.	
<b>WIGHTMAN PETRIE</b> SURVEYING ENGINEERING ENVIRONMENTAL LANDSCAPE ARCHITECTURE 412 South Lafayette Blvd. South Bend, IN 46601 p. 574.232.4388 f. 574.232.4333	
DESIGNED BY:	MIM/T
REVIEWED BY:	TC
DRAWN BY:	MIM/T
DATE:	2/21/2011
JOB NUMBER:	2010-5068
SCALE:	1/4" = 1'-0"
<b>E201</b>	

**Burger King Restaurant**  
 Kentwood, Michigan  
**BRAVOKILO, INC.**  
 Mishawaka, Indiana  
 4220 Edison Lakes Parkway

ELECTRICAL DEMOLITION PLAN